

C1 ALTERNATE LEVEL CONTROL

START

While executing this procedure:	
IF	THEN
All control rods are not inserted to at least position 02 AND The reactor will not remain shutdown without boron	Exit this procedure and enter C5, Level/Power Control
RPV water level cannot be determined	Exit this procedure and enter C4, RPV Flooding
RPV water level is rising	Exit this procedure and enter RPV Control Section RL at (A)
Primary containment water level and suppression chamber pressure cannot be maintained below the Maximum Primary Containment Water Level Limit (Figure C1-1)	Irrespective of whether adequate core cooling is assured, terminate injection into the Primary Containment from sources external to the Primary Containment until primary containment water level and suppression chamber pressure can be maintained below the curve (Figure C1-1)

Place the ADS logic inhibit switches in ON

Line up for injection, start pumps, and irrespective of pump NPSH and vortex limits, raise injection flow to the maximum with 2 or more of the following subsystems:

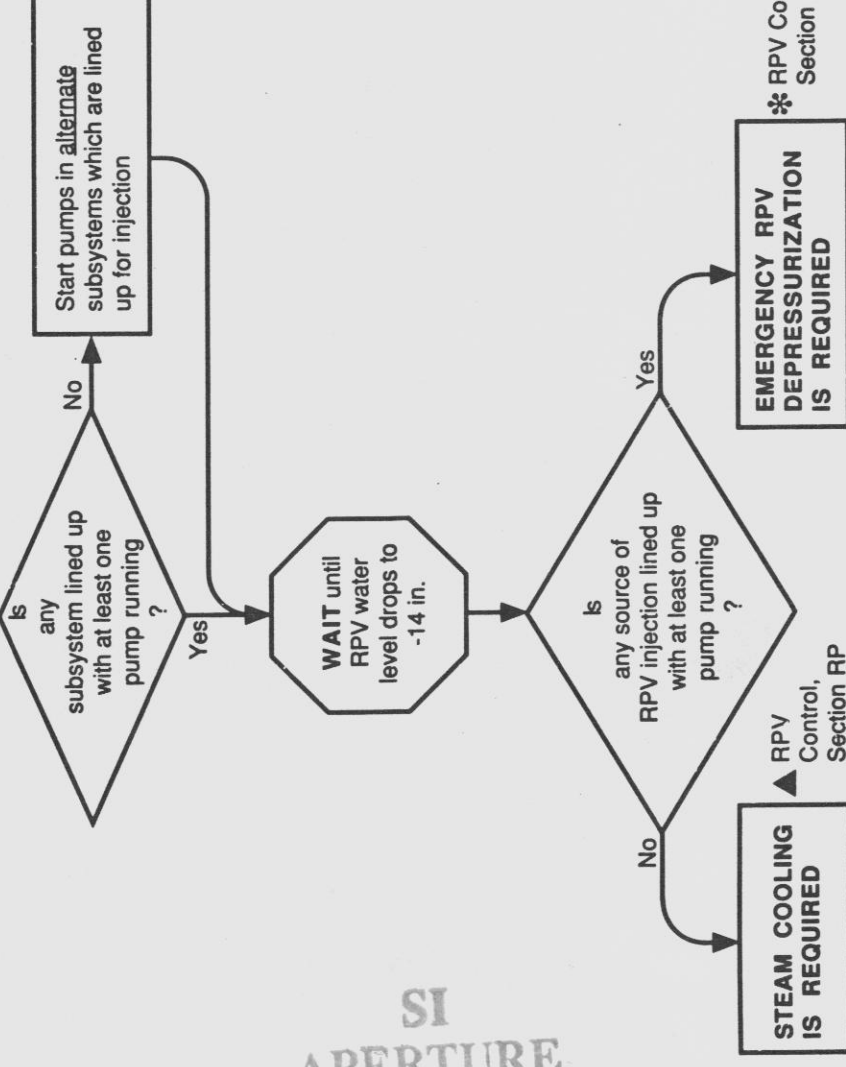
- Condensate
- HPCS
- LPCA
- LPCB
- LPCI-C
- LPCS

Can at least 2 subsystems be lined up?

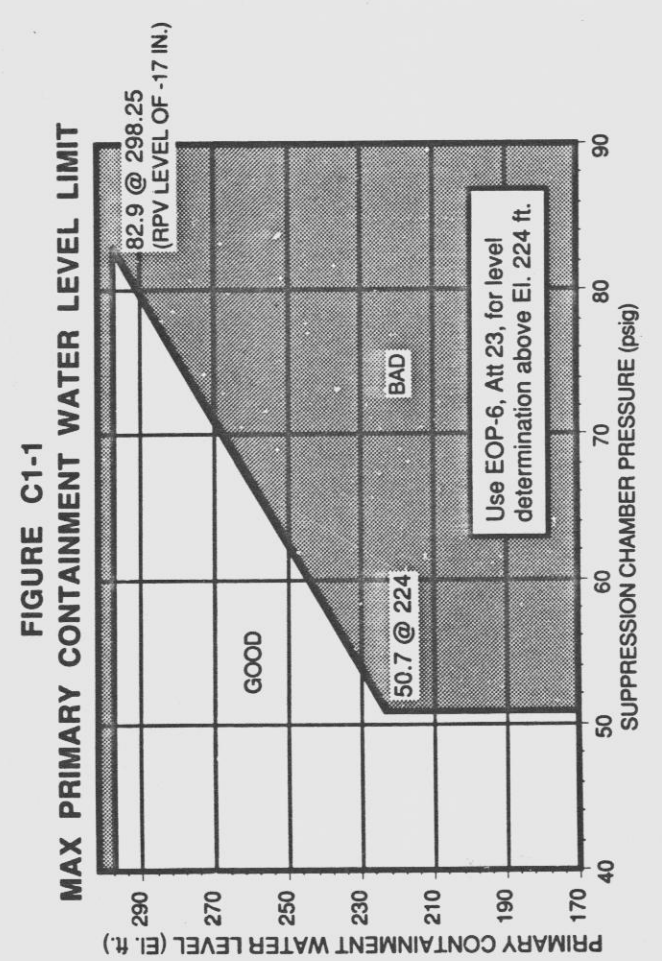
No: Commence lining up as many of the following alternate subsystems as possible

- RHR Service water crossite (EOP-6, Att 5)
- Fire system (EOP-6, Att 6)
- ECCS Keep-Full systems (EOP-6, Att 7)
- SLC (test tank) (EOP-6, Att 9)
- SLC (boron tank) (OP-36A, Section H.1)
- Condensate Transfer (EOP-6, Att 8)

While executing the following steps:	
IF	THEN
RPV pressure drops below 195 psig	Continue at (G)



SI
APERTURE
CARD



NIAGARA MOHAWK POWER CORPORATION NINE MILE POINT NUCLEAR STATION UNIT 2 EMERGENCY OPERATING PROCEDURE	
Plant Manager NMP	Date: 1/10/91
This procedure not to be used after: December 1992. Subject to periodic review.	
TITLE	ALTERNATE LEVEL CONTROL
Procedure Number	N2-EOP-C1
Rev	4

9304290210

07-01-91
27
9304290210
D