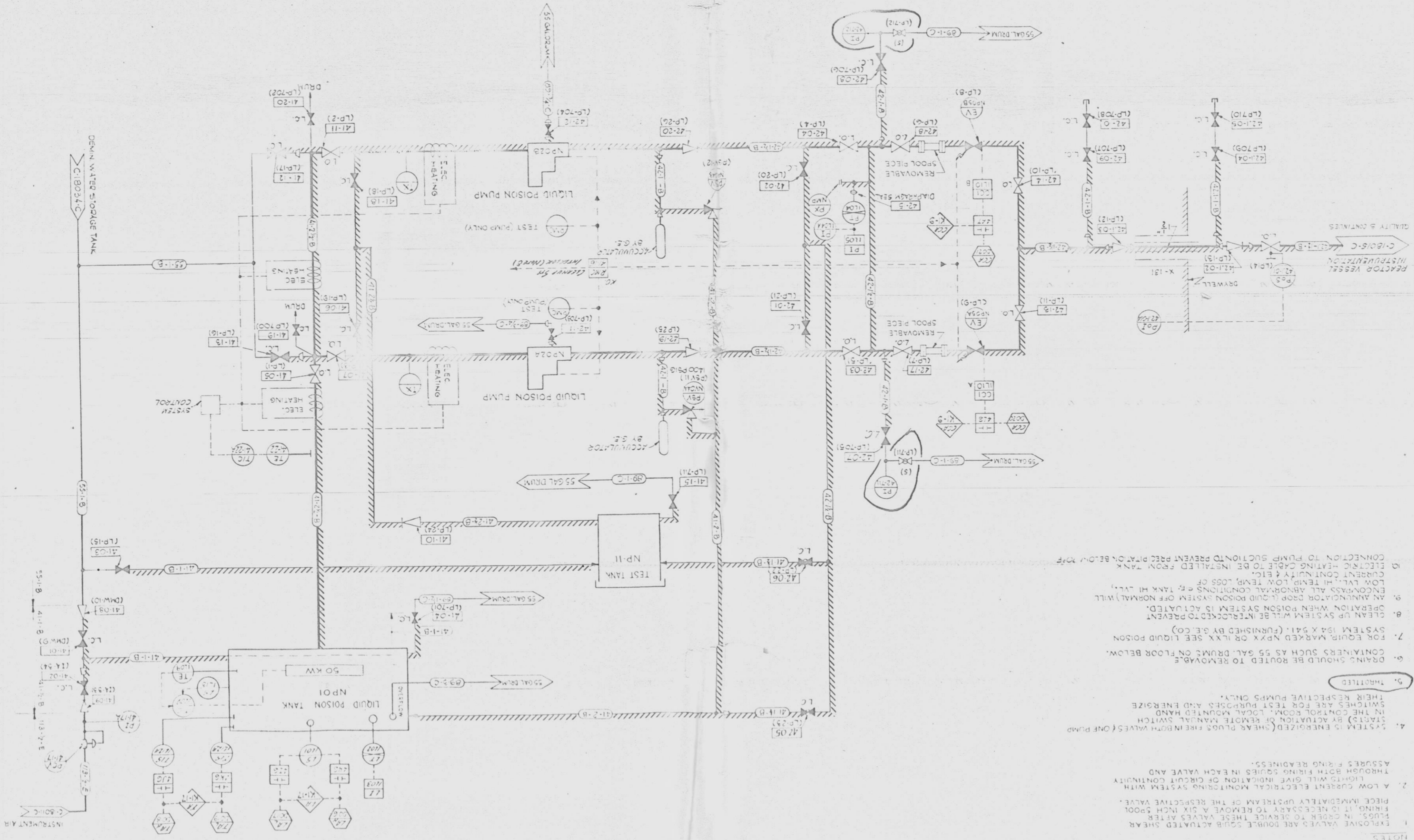


C-18019-C

- NOTES
- EXPLOSIVE VALVES ARE DOUBLE SOURCE ACTUATED SHEAR PIPES IN ORDER TO REMOVE THESE VALVES AFTER FIRING. IT IS NECESSARY TO REMOVE A SIX INCH SPOOL PIECE IMMEDIATELY UPSTREAM OF THE RESPECTIVE VALVE.
  - A LOW CURRENT ELECTRICAL MONITORING SYSTEM WITH LIGHTS WILL GIVE INDICATION OF CIRCUIT CONTINUITY THROUGH BOTH FLOOR SPOLES IN EACH VALVE AND ASSURES FLOOR READINESS.
  - SYSTEM IS ENERGIZED (SHEAR PIPES FIRE IN BOTH VALVES) ON PUMP STARTUP BY ACTION OF REMOTE MANUAL SWITCH IN THE CONTROL ROOM, LOCAL MOUNTED HAND SWITCHES ARE FOR TEST PURPOSES AND ENERGIZE THEIR RESPECTIVE PUMPS ONLY.
  5. UNNOTED
  - DRAINS SHOULD BE ROUTED TO REMOVABLE CONTAINERS SUCH AS 55 GAL. DRUMS ON FLOOR BELOW.
  - FOR EQUIP. MARKED NPXX OR ILXX SEE LIQUID POISON SYSTEM 184 X 541. (FURNISHED BY GE CO.)
  - CLEAN UP SYSTEM WILL BE INTERLOCKED TO PREVENT OPERATION WHEN LIQUID POISON SYSTEM IS ACTUATED.
  - AN ANNUNCIATOR DROOP (LIQUID POISON SYSTEM OFF NORMAL) WILL ENCOMPASS ALL ABNORMAL CONDITIONS OF TANK HI LEVEL, LOW LEVEL, HI TEMP, LOW TEMP, LOSS OF CURRENT CONTINUITY & ELEC. TANK HI WALL.
  - AN ANNUNCIATOR FOR LIQUID POISON SYSTEM OFF NORMAL WILL ENCOMPASS ALL ABNORMAL CONDITIONS OF TANK HI WALL, LOW LEVEL, HI TEMP, LOW TEMP, LOSS OF CURRENT CONTINUITY & ELEC. TANK HI WALL.
  - ELECTRIC HEATING CABLE TO BE INSTALLED FROM TANK CONNECTION TO PUMP SUCTION TO PREVENT FREEZING BELOW.



SYMBOLS: NRP DWG # C-1800-C (EXCEPT AS NOTED)  
 EV - EXPLOSIVE VALVE  
 CCI - CURRENT CONTINUITY INDICATOR (LIGHT)  
 E.P. DWG. 184 X 541  
 (LP-10) - OPERATING NUMBER

NO.	REV.	DESCRIPTION
1	1	ISSUED FOR REVIEW
2	2	REVISIONS MADE AS NOTED
3	3	REVISIONS MADE AS NOTED
4	4	REVISIONS MADE AS NOTED
5	5	REVISIONS MADE AS NOTED
6	6	REVISIONS MADE AS NOTED
7	7	REVISIONS MADE AS NOTED
8	8	REVISIONS MADE AS NOTED
9	9	REVISIONS MADE AS NOTED
10	10	REVISIONS MADE AS NOTED

REACTOR LIQUID POISON SYSTEM  
 P & I DIAGRAM  
 NINE MILE POINT NUCLEAR STATION  
 NIAGARA MOHAWK POWER CORPORATION  
 NIAGARA MOHAWK

NO.	REV.	DESCRIPTION
1	1	ISSUED FOR REVIEW
2	2	REVISIONS MADE AS NOTED
3	3	REVISIONS MADE AS NOTED
4	4	REVISIONS MADE AS NOTED
5	5	REVISIONS MADE AS NOTED
6	6	REVISIONS MADE AS NOTED
7	7	REVISIONS MADE AS NOTED
8	8	REVISIONS MADE AS NOTED
9	9	REVISIONS MADE AS NOTED
10	10	REVISIONS MADE AS NOTED

LIQUID POISON  
 QUALITY SCALE CLASSIFICATION  
 NUCLEAR ENERGY SERVICES, INC.  
 JUN 24 1979

TERA  
 APERTURE  
 CARD