

REGULATORY INFORMATION DISTRIBUTION SYSTEM (RIDS)

ACCESSION NBR: 8009150297 DOC. DATE: 80/09/08 NOTARIZED: NO DOCKET #  
 FACIL: 50-220 Nine Mile Point Nuclear Station, Unit 1, Niagara Powe 05000220  
 AUTH. NAME AUTHOR AFFILIATION  
 LEMPGES, T.E. Niagara Mohawk Power Corp.  
 RECIPI. NAME RECIPIENT AFFILIATION  
 Office of Management and Program Analysis

SUBJECT: Forwards monthly operating rept for Aug 1980 & narrative  
 rept of operating experience for Aug 1980 & Jul, Aug, Sept &  
 Oct 1979.

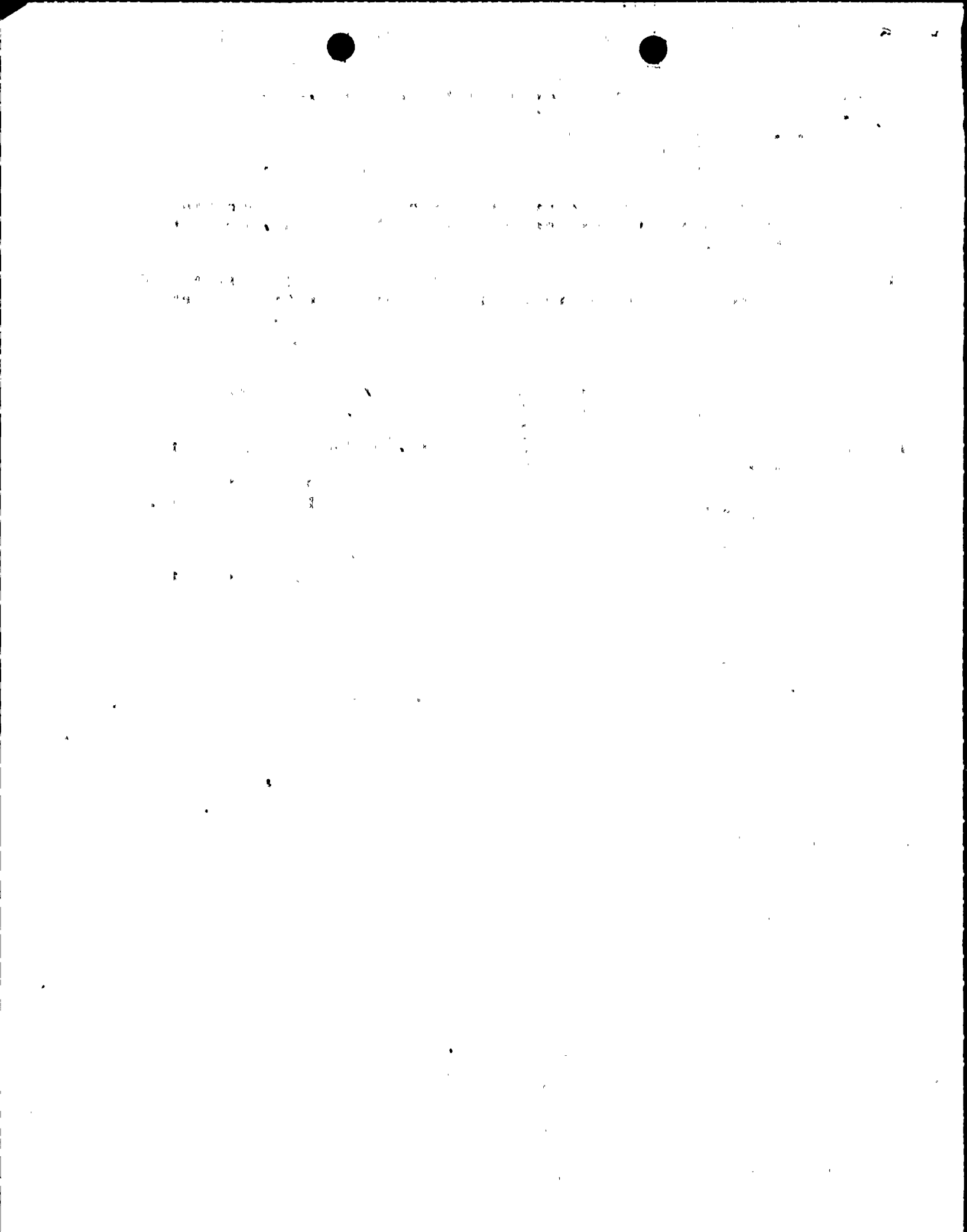
DISTRIBUTION CODE: A008S COPIES RECEIVED: LTR 1 ENCL 1 SIZE: 3+3  
 TITLE: Annual, Semi-Annual & Monthly Operating Reports (OL) Stag

NOTES:

ACTION:	RECIPIENT	COPIES	RECIPIENT		COPIES	
	ID CODE/NAME		LTR	ENCL		ID CODE/NAME
	IPPOLITO, T. 04	7	7			
INTERNAL:	AEOD	1	1	D/DIR, HUM FAC07	1	1
	DIR, HUM FAC 08	1	1	I&E 06	2	2
	MPA 13	2	2	NRC PDR 02	1	1
	OP EX EVAL BR09	1	1	OR ASSESS BR 10	1	1
	<u>REG FILE</u> 01	1	1			
EXTERNAL:	ACRS 11	1	1	BROOKHAVEN 12	1	1
	LPDR 03	1	1	NSIC 05	1	1

SEP 16 1980

TOTAL NUMBER OF COPIES REQUIRED: LTR 22 ENCL 22



September 8, 1980

Director, Office of Management  
Information and Program Control  
United States Nuclear Regulatory Commission  
Washington, D. C. 20555

RE: Docket No. 50-220  
DPR - 63

Gentlemen:

Submitted herewith is the Report of Operating Statistics and Shutdown Experience for August, 1980, for the Nine Mile Point Nuclear Station Unit #1.

Also included is a Narrative Report of Operating Experience for the month of August 1980, as well as for the months of July, August, September and October 1979.

Very truly yours,  
*Thomas E. Lempges*  
Thomas E. Lempges  
Vice President  
Nuclear Generation

TEL:jl  
Attachments  
cc: Director, Office of I&E (10 copies)

A008  
s  
1/1

8009150297



11/11/11

11/11/11

NIAGARA MOHAWK POWER CORPORATION

NINE MILE POINT NUCLEAR STATION UNIT #1

NARRATIVE OF OPERATING EXPERIENCE

AUGUST 1980

The station operated with a monthly availability factor of 100% and a net design electrical capacity factor of 43.0%. During the entire month #15 Reactor Recirculation Pump was out of service and isolated due to mechanical problems.

Availability/capacity factor losses were due to the following:

On August 22 power was reduced to approximately 75% to adjust the control rod pattern for the upcoming end-of-cycle derates. During this power reduction #11 electric driven feedwater pump was removed from service to replace its leaking mechanical seals.

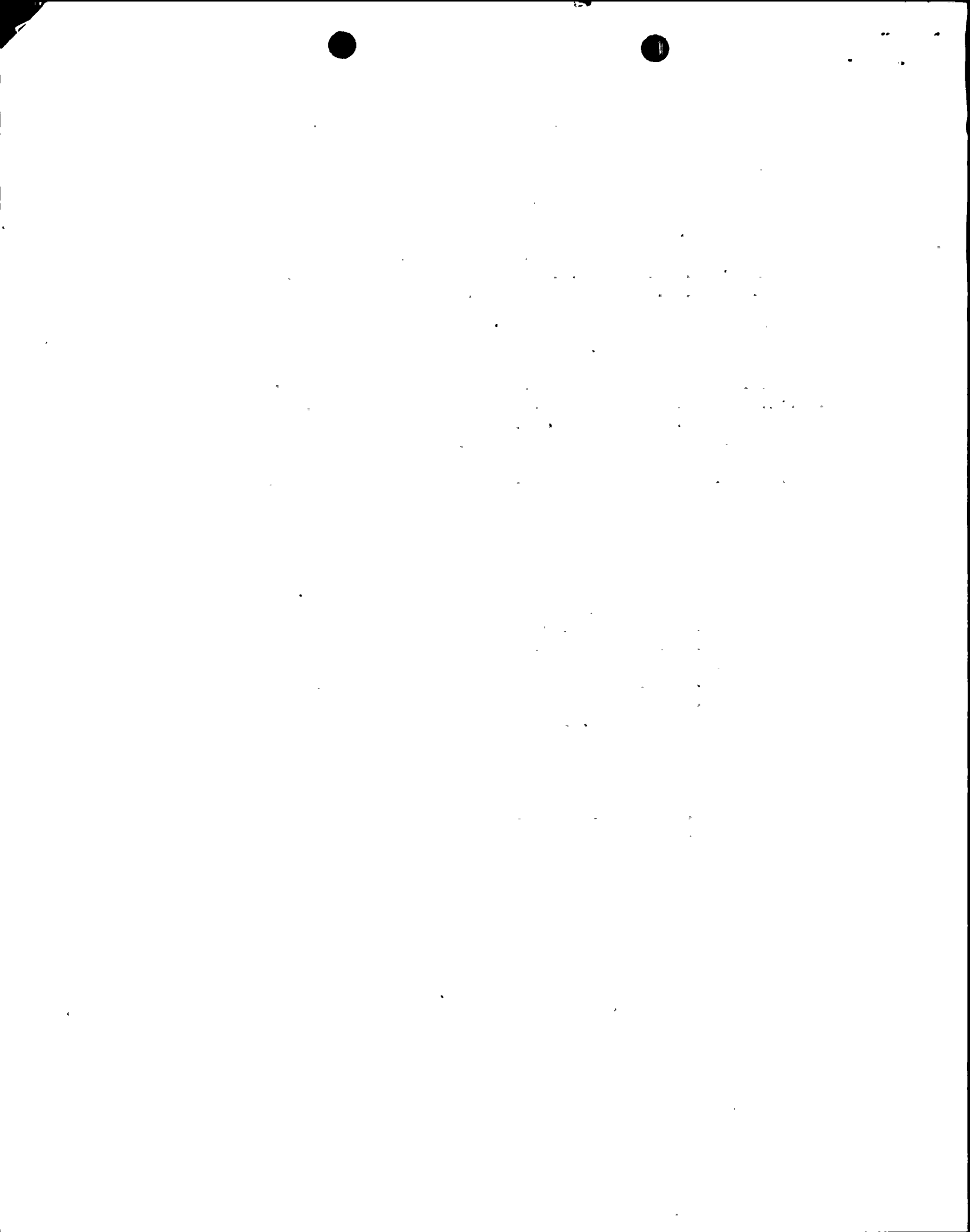
Capacity factor loss throughout the month was also due to condenser hotwell temperature limitations.

CLASS I WORK - MAINTENANCE - AUGUST 1980

- #5011 - #1 Air compressor on #103 Diesel Generator - installed new high pressure head gasket - new discharge valve and check valve on new "O" ring in pilot valve
- #5072 - Replaced inboard and outboard seals on #11 Feed Water Pump
- #5085 - Replaced rubber seals along bottom of Rx Bldg. extension outer door
- #5068 - Made complete overhaul of #11 instrument air compressor
- #5086 - Replaced packing, back-up rings and seals on #11 Nitrogen needle valve to hydraulic control unit #18-07

CLASS I WORK - INSTRUMENT & CONTROL - AUGUST 1980

- #4942 - CRD 34-43 - replace rubber goods
- #13585 - Replace master trip units on RPS recalled by vendor
- #13581 - Inspect scram pilot valves - 18-03, 22-47, 14-47, 22-51 and 30-47



JULY 1979

1. Repair intercept valves
2. Repair clean-up pump #12
3. Repair house service air compressor
4. Replaced strainer on #12 cond. demin.
5. Repack fuel pool recirc pump
6. Rebuilding CRD's
7. Continual on restraints - M.O. 1490

AUGUST 1979

1. Continual on restraints - M.O. 1490
2. Repair #11 & #12 condensate pump
3. Continual on house service air compressor
4. Replaced valve - C.A.D. System

SEPTEMBER 1979

1. Continual on restraints - M.O. 1490
2. Various W.R.'s on spent fuel pool
3. Rebuilding spare CRD's
4. Repair #102 Diesel Gen. Air Compressor
5. Rx Bldg. vent system - filters

OCTOBER 1979

1. Continual on restraints - M.O. 1490
2. Work on snubber support #51-H5-12
3. #12 Recirc pump - seal
4. Repair S.J.A.E. relief valve
5. Clutch on turvine to #13 F.W. pump
6. Removed CRD #38-31
7. Repair Emergency Con. return I.V.
8. High pressure control valve in clean up system



1950

1951

1952

1953

1954

1955

1956

1957

1958

1959

1960

1961

1962

1963