

REGULATORY INFORMATION DISTRIBUTION SYSTEM (RIDS)

MA/4

ACCESSION NBR:8006160090 DOC. DATE: 80/06/09 NOTARIZED: NO DOCKET #
 FACIL:50-410 Nine Mile Point Nuclear Station, Unit 2, Niagara Moha 05000410
 AUTH. NAME AUTHOR AFFILIATION
 RHODE, G.K. Niagara Mohawk Power Corp.
 RECIP. NAME RECIPIENT AFFILIATION
 RUBENSTEIN, L.S. Assistant Director for Reactor Systems

SUBJECT: Submits anomalous geologic conditions per 800130 commitment.
 Small, low-angle thrust fault previously encountered in
 intake shaft intersected in East Lake water tunnel. Fault &
 associated splay faults noted intermittently.

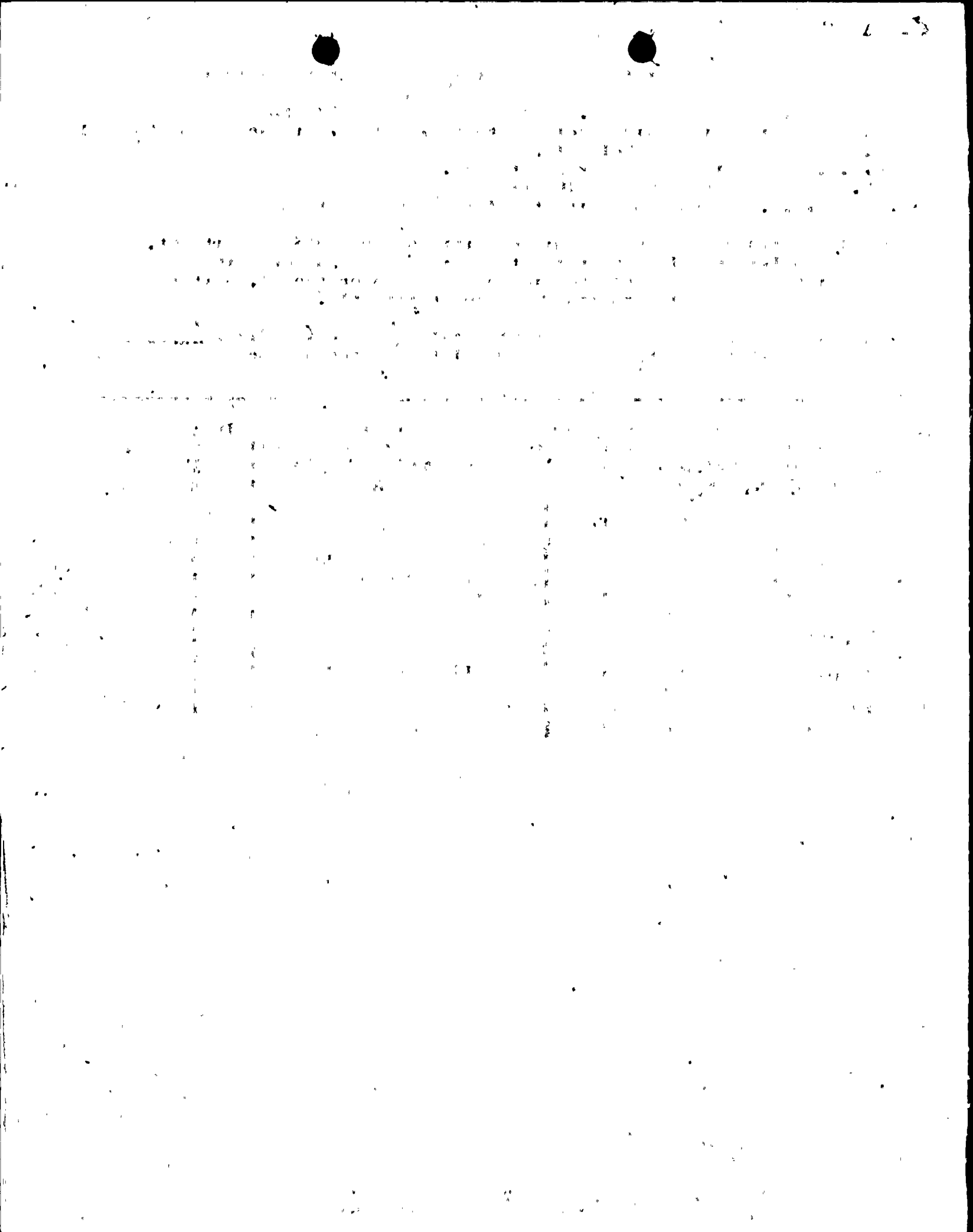
DISTRIBUTION CODE: B001S COPIES RECEIVED: LTR 1 ENCL 0 SIZE: 1
 TITLE: PSAR/FSAR AMDTS and Related Correspondence

NOTES: _____

ACTION:	RECIPIENT		COPIES		-	RECIPIENT		COPIES	
	ID CODE/NAME		LTTR	ENCL		ID CODE/NAME		LTTR	ENCL
ACTION:	AD	A/D LICENSING	1	0		BC	YOUNGBLOOD, B.	1	0
	LA	RUSHBROOK, M.	1	0		PM	KIPER, K 05	1	0
INTERNAL:	A/D	CORE & CS13	1	0		AUX	SYS. BR 18	1	0
	CHEM	ENG BR	1	0		CORE	PERF BR 17	1	0
	DIRECTOR	NRR	1	0		EMERG	PREP 22	1	0
	GEOSCIEN	BR 09	4	4		HYD/GEO	ENG BR	1	0
	I&C	SYS BR 20	1	1		I&E	06	3	0
	KIRKWOOD	29	1	1		MPA		1	0
	NRC	PDR 02	1	1		OELD		1	0
	QAB	BR 10	1	1		RAD	ASSESS BR12	1	1
	<u>REG FILES</u>	01	1	1		SIT	ANAL BR 27	1	1
	EXTERNAL:	ACRS	30	10	10	LPDR	03	1	0
	NSIC	04	1						

JUN 17 1980

0



June 9, 1980

Mr. L. S. Rubenstein, Acting Chief
Light Water Reactors Branch No. 4
U. S. Nuclear Regulatory Commission
Washington, D. C. 20555

Dear Mr. Rubenstein:

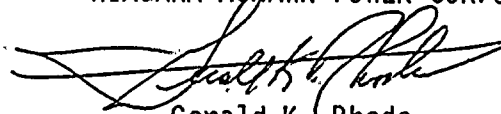
Re: Nine Mile Point Unit 2
Docket No. 50-410

The following information is provided in accordance with the commitment contained in our January 30, 1980 letter to report all anomalous geologic conditions discovered in the Nine Mile Point Unit 2 intake and discharge tunnels.

The small, low-angle thrust fault previously encountered in the intake shaft has been intersected in the East Lake Water Tunnel. The fault and associated splay faults have been noted intermittently from the tunnel portal to 915 feet out into the tunnel. Displacements on the fault and splays have been approximately equal to or less than those previously noted in the intake shaft. Calcite samples have been collected and geologic mapping continues. Nothing encountered in the mapping indicates any significant departures from previous observations or conclusions regarding this fault.

Very truly yours,

NIAGARA MOHAWK POWER CORPORATION



Gerald K. Rhode
Vice President
System Project Management

PEF:jk

Boo
5/10

8006160090

