

REGULATORY INFORMATION DISTRIBUTION SYSTEM (RIDS)

ACCESSION NBR:8005090342 DOC.DATE: 80/05/05 NOTARIZED: NO DOCKET #
 FACIL:50-220 Nine Mile Point Nuclear Station, Unit 1, Niagara Powe 05000220
 AUTH.NAME AUTHOR AFFILIATION
 DISE,D.P. Niagara Mohawk Power Corp.
 RECIPIENT AFFILIATION
 IPPOLITO,T. Office of Nuclear Reactor Regulation
 Systems Interaction Branch

SUBJECT: Forwards "Thermal Transmission of Pyrocrete 241 at Varying Thickness," in response to NRC request.

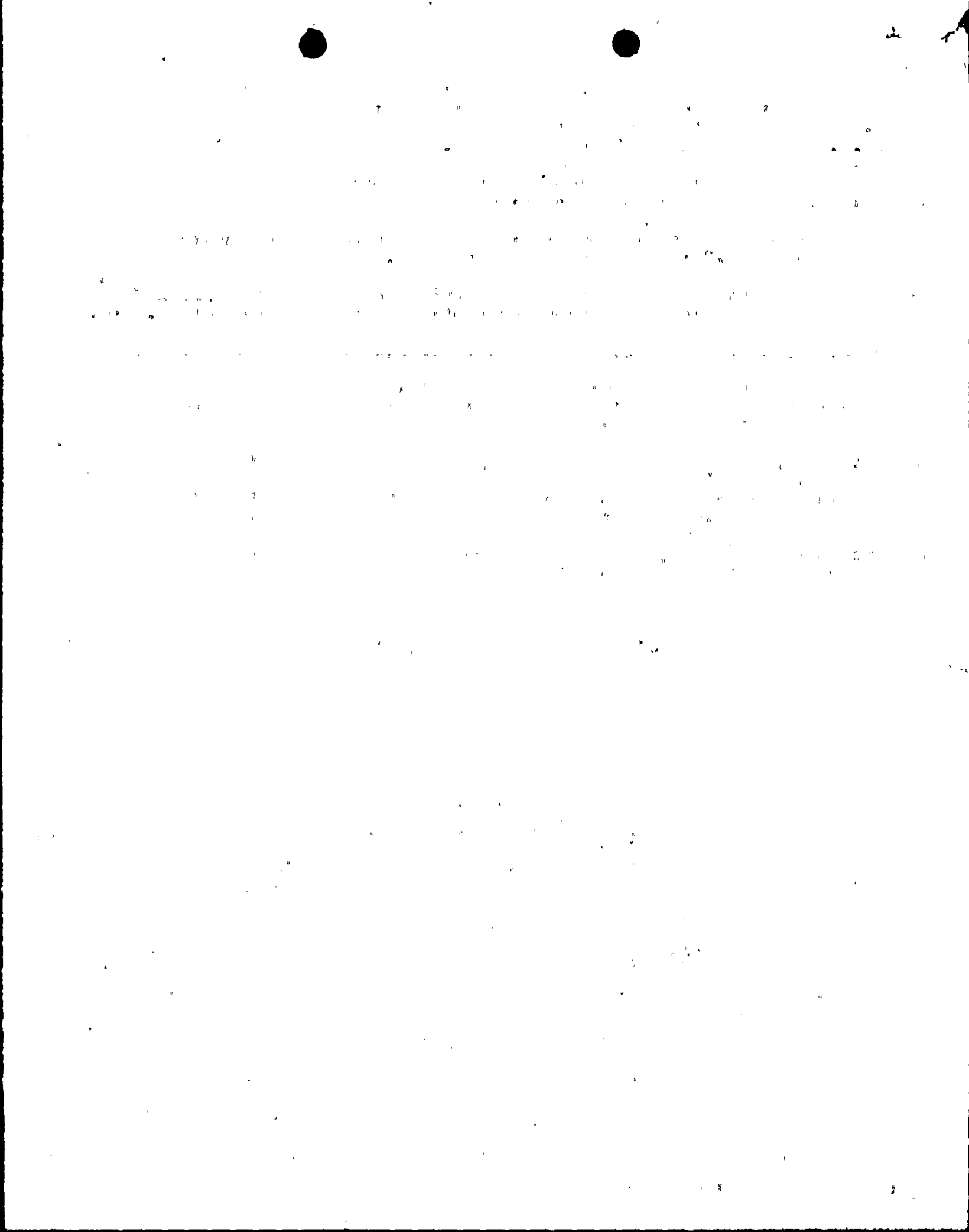
DISTRIBUTION CODE: A006S COPIES RECEIVED:LTR 1 ENCL 1 SIZE: 1+19
 TITLE: Fire Protection Information (After Issuance of OP, Lic.)

NOTES: _____

	RECIPIENT		COPIES		RECIPIENT		COPIES	
	ID	CODE/NAME	LTR	ENCL	ID	CODE/NAME	LTR	ENCL
ACTION:	05	BC ORB # 3	4	4				
INTERNAL:	01	REG FILE	1	1	02	NRC PDR	1	1
	09	I&E	2	2	12	AUXIL SYS BR	2	2
	14	PLANT SYS BR	5	5	19	WAMBACH	1	1
	20	MURANAKA,R	1	1	OELD		1	0
EXTERNAL:	03	LPDR	1	1	04	NSIC	1	1
	22	ACRS	16	16				



MAY 12 1980



May 5, 1980

Director of Nuclear Reactor Regulation
Attn: Mr. Thomas Ippolito
Chief Operating Branch #3
U. S. Nuclear Regulatory Commission
Washington, D. C. 20555

Re: Nine Mile Point Unit 1
Docket No. 50-220
DPR-63

Dear Mr. Ippolito:

By letters dated August 17, 1979 and September 25, 1979 Niagara Mohawk indicated that we would encapsulate diesel generator 102 and 103 output cables with protective material to provide three hour fire protection. We have re-evaluated the encapsulation of the output cables including consideration of internal heat load and determined that cable separation by a three hour fire wall is preferable to encapsulation.

The control cables in diesel generator 103 area will be encapsulated. Per a request of your staff, find attached a report which details the results of tests on the pyrocrete encapsulation material.

Very truly yours,

NIAGARA MOHAWK POWER CORPORATION



D. P. Dise,
Vice President - Engineering

GJG:jk
Attachment

A006
5/11

Handwritten marks at the top right corner.



Faint, illegible text in the upper right quadrant.

Faint, illegible text in the center of the page.

A horizontal line of small dashes or dots in the center.

Faint, illegible text in the middle right area.

A large, very faint and illegible block of text occupying the middle section of the page.

Faint, illegible text in the lower middle section.

Faint, illegible text in the lower section.

A single small mark or character at the bottom center.