

REGULATORY INFORMATION DISTRIBUTION SYSTEM (RIDS)

ACCESSION NBR: 7907200438 DOC. DATE: 79/07/11 NOTARIZED: NO DOCKET #
 FACIL: 50-220 Nine Mile Point Nuclear Station, Unit 1, Niagara Powe 05000220
 AUTH. NAME AUTHOR AFFILIATION
 SCHNEIDER, R. R. Niagara Mohawk Power Corp.
 RECIP. NAME RECIPIENT AFFILIATION
 GRIER, B. H. Region 1, Philadelphia, Office of the Director

SUBJECT: Forwards errata to facility 1978 "Aquatic Ecology Studies Data Rept."

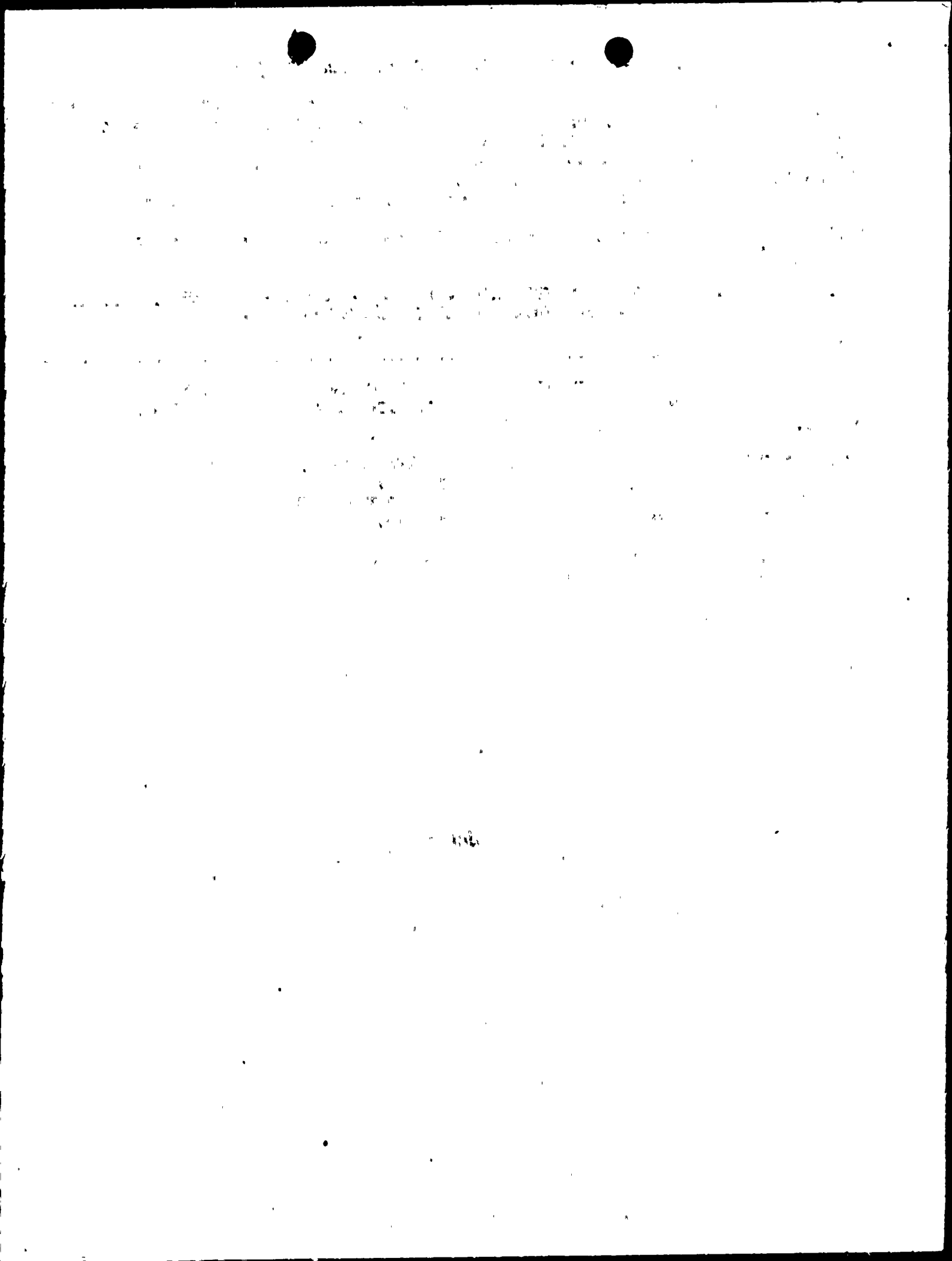
DISTRIBUTION CODE: A007S COPIES RECEIVED: LTR 1 ENCL 1 SIZE: 10
 TITLE: ANNUAL ENVIRON. REPORTS (OL STAGE)

NOTES:

ACTION:	RECIPIENT	COPIES		RECIPIENT	COPIES	
	ID CODE/NAME	LTR	ENCL	ID CODE/NAME	LTR	ENCL
	05 BC ORB #3	7	7			
INTERNAL:	01 REG FILE	1	1	02 NRC PDR	1	1
	12 I&E	2	2	14 EEB	1	1
	15 ENVN SPEC BR	1	1	16 EFLT TRT SYS	1	1
	17 RAD ASMT BR	1	1	18 EPS BR SD	1	1
EXTERNAL:	03 LPDR	1	1	04 NSIC	1	1
	19 ACRS	1	1			

JUL 24 1979

ENVIRO
CCP



July 11, 1979

Mr. Boyce H. Grier, Director
Office of Inspection and Enforcement
Region I
U. S. Nuclear Regulatory Commission
631 Park Avenue
King of Prussia, PA 19406

REGULATORY DOCKET FILE COPY

Dear Mr. Grier:

Re: Nine Mile Point Unit 1
Docket No. 50-220
DPR-63

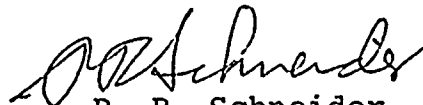
My letter of February 28, 1979 transmitted copies of the 1978 Nine Mile Point Aquatic Ecology Studies Data Report. Enclosed we herewith submit two (2) copies of the following:

"Errata - 1978 Nine Mile Point Aquatic Ecology Studies Data Report."

The enclosed changes have no effect on the conclusions of the report.

Very truly yours,

NIAGARA MOHAWK POWER CORPORATION



R. R. Schneider
Vice President
Electric Production

Enclosures

✓Xc: Director of Nuclear Reactor Regulation
(17 Copies)

A007
S 1/1
7907200438

1950



TEXAS INSTRUMENTS
INCORPORATED

POST OFFICE BOX 5621 • DALLAS, TEXAS 75222

Science Services Division

14, June 1979

Niagara Mohawk Power Corporation
300 Erie Boulevard West
Syracuse, NY 13202

Attention: Mr. William C. Hiestand
Environmental Projects Manager

Subject: Errata for the Nine Mile Point Aquatic Ecology Studies
1978 Data Report submitted 15 February 1979.

Enclosures: Replacement Tables (40 copies)

Dear Mr. Hiestand:

During preparation of the 1978 Interpretive Report we identified some minor errors on some pages of the 1978 Data Report. The enclosed tables (8) of fish egg or larvae densities should replace the corresponding tables in the report. In addition, the following changes should be made:

- a) Page IV - C 151 - The mean catch for FITZ transect for 16-18 Aug. is 18.6 rather than 13.6.
- b) Page IV - C 158 - The Contour Mean and Exp. Mean for 21-22 June are 14.3 and 20.3, respectively.
- The Contour Mean and Exp. Mean for 10-15 Sep. are 5.7 and 6.7, respectively.
- c) Page VII- B 16 - The weight (g) for the 186 mm rainbow smelt is 40.8 rather than 90.8.

These modifications and errata do not impact the study results nor change any conclusions presented in the 1978 reports.

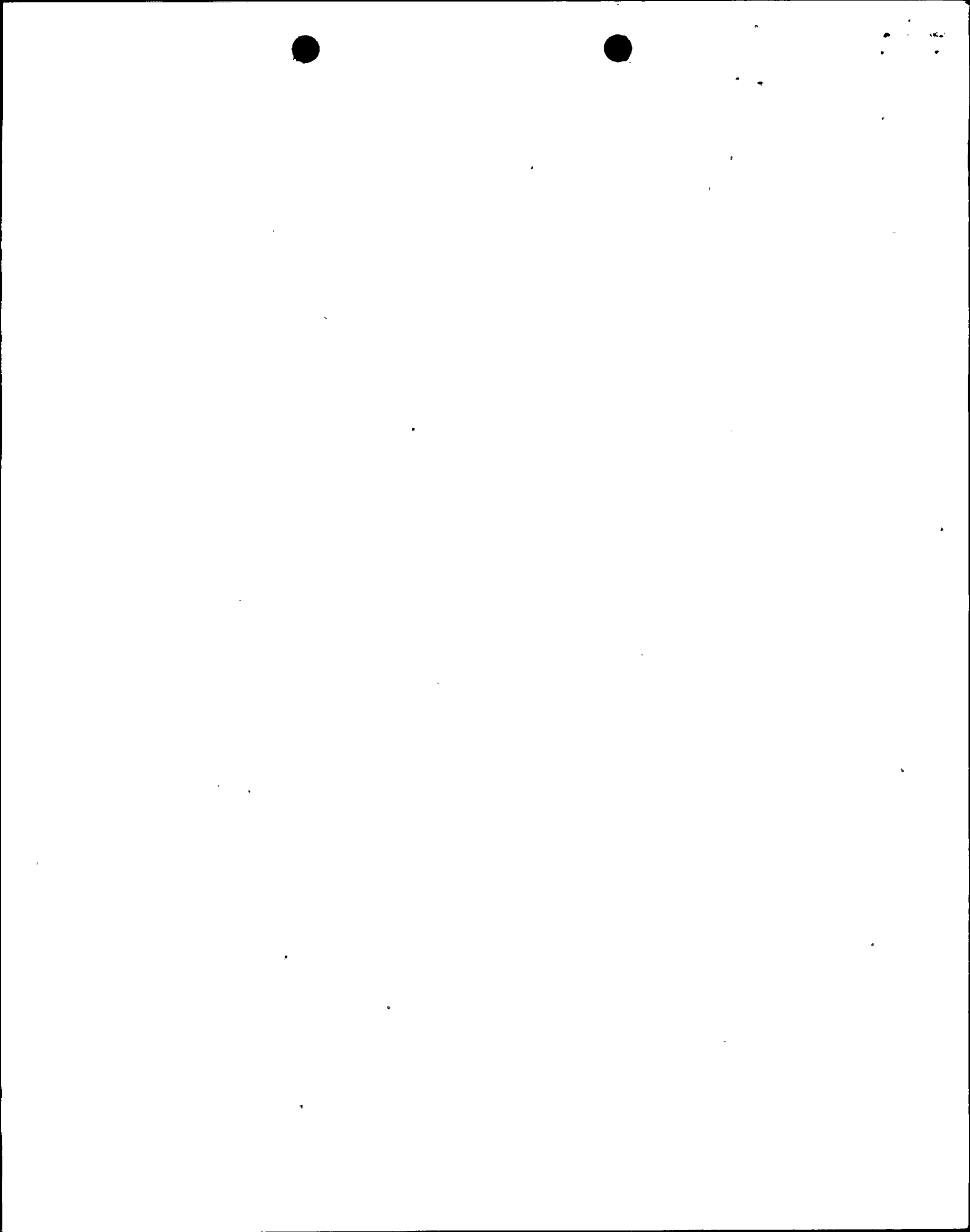
Very truly yours,

Richard Moos, Ph.D.
Program Manager
Ecological Services

REM:wm

cc J. Blake

Enclosure



Abundance* of Alewife Eggs in Night Ichthyoplankton Collections,
Nine Mile Point Vicinity, 1978

Date	Sample Depth**	20-Ft Contour***							40-Ft Contour***							60-Ft NMPP	80-Ft NMPP	100-Ft NMPP	Grand Mean
		3-West	1-West	1/2-West	1/2-East	1-East	3-East	Mean	3-West	1-West	1/2-West	1/2-East	1-East	3-East	Mean				
JUN 6-7	S M B Mean	No Catch							No Catch							No Catch			
JUN 15-16	S M B Mean	0	118.2	0	0	0	0	19.7	0	0	0	0	0	0	0.0	No Catch			7.9 6.9 22.6 12.5
JUN 19-20	S M B Mean	0	0	0	4.8	0	0	0.8	0	4.7	0	4.4	0	0	1.5	No Catch			0.9 0.0 1.7 0.9
JUN 26	S M B Mean	0	40.9	14.0	0	0	0	9.2	0	0	4.4	0	0	0	0.7	No Catch			4.0 2.2 9.5 5.2
JUL 5-6	S M B Mean	86.3	48.9	0	0	294.7	41.3	78.5	27.8	137.1	0	0	0	0	27.5	0	87.9	0	48.3
JUL 12-13	S M B Mean	8.3	0	0	0	0	0	1.4	3.7	14.2	0	0	0	0	3.0	No Catch			1.7 0 1.9 1.2
JUL 17-18	S M B Mean	207.9	4.2	8.1	0	0	0	36.7	8.6	0	0	0	0	0	1.4	No Catch			15.3 0 1.4 5.6
JUL 24-25	S M B Mean	0	231.9	0	115.3	0	0	57.9	0	0	0	0	0	0	0	No Catch			23.1 351.2 110.5 161.6

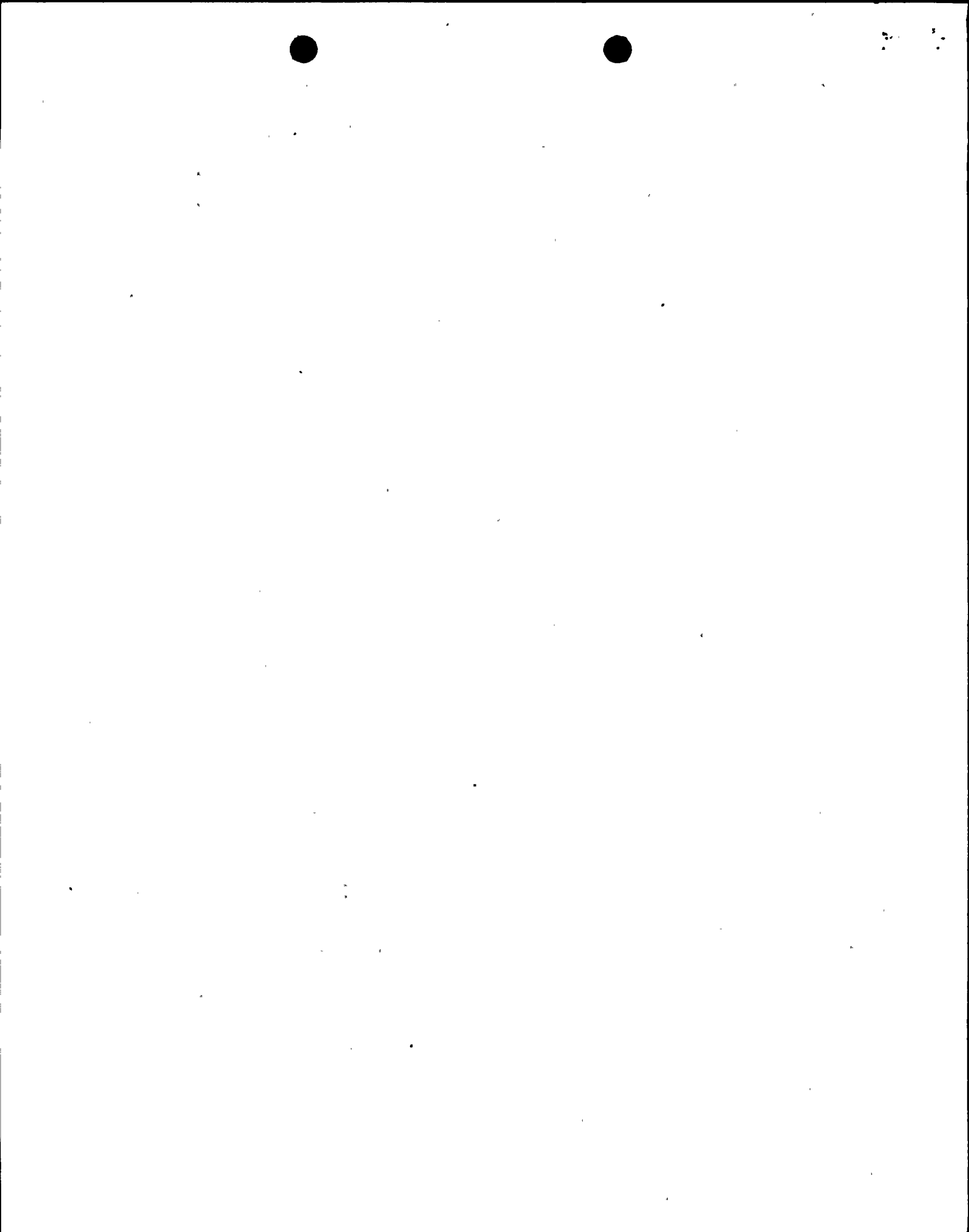
* Number per 1000 m³.

** S = surface, M = mid-depth, B = bottom.

*** Stations along contours are established within 3-, 1-, and 1/2-mile radii east and west of Nine Mile Point Station, Unit 1.

I-C-3

science services division



Abundance* of Total Prolarvae (All Species Combined) in Day Ichthyoplankton Collections
Nine Mile Point Vicinity, 1978

(No prolarvae were collected in day samples after August)

Date	Sample Depth**	20-Ft Contour***							40-Ft Contour***							60-Ft NMPP	80-Ft NMPP	100-Ft NMPP	Grand Mean
		3-West	1-West	1/2-West	1/2-East	1-East	3-East	Mean	3-West	1-West	1/2-West	1/2-East	1-East	3-East	Mean				
Apr 4	S M B Mean	No Catch							No Catch							No Catch			
Apr 10	S M B Mean	0	0	4.0	0	0	0	0.7	0	3.9	0	0	0	0	0.7	4.1	0	0	0.8
		0	0	0	5.3	0	5.3	1.8	0	0	0	0	0	0	0	0	0	0	0.7
		0	0	0	0	0	0	0	0	0	0	0	0	0	0	0	0	0	0.7
		0	0	1.3	1.8	0	1.8	0.8	0	1.3	0	0	0	0	0.2	1.4	0	0	0.5
Apr 17	S M B Mean	0	0	0	0	0	0	0	No Catch							0	0	0	0
		0	0	0	0	0	0	0								0	0	4.9	0.3
		0	0	0	5.2 ¹	5.5	0	1.8								0	0	0	0.7
		0	0	0	1.7	1.8	0	0.6								0	0	1.6	0.3
Apr 24	S M B Mean	0	0	0	0	0	0	0	No Catch							No Catch			0
		0	4.7	0	0	0	0	0.8											0.3
		4.6	0	0	0	0	0	0.8											0.3
		1.5	1.6	0	0	0	0	0.5											0.2
May 2	S M B Mean	0	0	0	0	4.1	0	0.7	4.0	0	0	0	0	0	0.7	0	0	0	0.5
		4.4	4.9	0	0	0	0	1.6	4.7	0	4.7	5.2	0	0	2.4	0	0	0	1.6
		0	0	0	0	0	0	0	0	0	4.5	0	0	0	0.8	0	0	0	0.3
		1.5	1.6	0	0	1.4	0	0.8	2.9	0	3.1	1.7	0	0	1.3	0	0	0	0.8
May 8	S M B Mean	No Catch							No Catch							No Catch			
May 15	S M B Mean	0	0	13.1	13.8	0	0	4.5	0	0	0	0	0	0	0	No Catch			1.8
		0	0	14.4	69.1	0	0	13.9	0	0	4.7	0	0	0	0.8				5.9
		0	0	8.9	59.7	0	0	11.4	0	0	0	0	0	0	0				4.6
		0	0	12.1	47.6	0	0	10.0	0	0	1.6	0	0	0	0.3				4.1
May 22	S M B Mean	4.4	0	0	0	0	0	0.7	No Catch							No Catch			0.3
		0	5.0	0	0	5.0	5.6	2.6											1.0
		0	0	0	0	0	15.5	2.6											1.0
		1.5	1.7	0	0	1.7	7.0	2.0											0.8
May 30	S M B Mean	0	0	0	0	0	0	0	0	0	0	0	0	0	0	0	3.8	0	0.2
		0	0	0	0	4.9	0	0.8	0	0	4.9	0	4.4	0	1.6	0	0	0	0.9
		0	0	0	0	0	9.7	1.6	5.3	0	0	0	0	0	0.9	0	0	0	1.0
		0	0	0	0	1.6	3.2	0.8	1.8	0	1.6	0	1.5	0	0.8	0	1.3	0	0.7

* Number per 1000 m³.

** S = surface, M = mid-depth, B = bottom.

*** Stations along contours are established within 3-, 1-, and 1/2-mile radii east and west of Nine Mile Point Station, Unit 1.

¹ Surface and bottom samples at 1/2 east mislabeled; Prolarvae assigned to bottom sample.



Abundance* of Total Prolarvae (All Species Combined) in Night Ichthyoplankton Collections,
Nine Mile Point Vicinity, 1978

Date	Sample Depth**	20-Ft Contour***							40-Ft Contour***							60-Ft NMPP	80-Ft NMPP	100-Ft NMPP	Grand Mean
		3-West	1-West	1/2-West	1/2-East	1-East	3-East	Mean	3-West	1-West	1/2-West	1/2-East	1-East	3-East	Mean				
JUN 6-7	S	0	3.9	81.2	4.0	4.1	4.2	16.2	8.4	3.5	27.3	0	0	0	6.5	No Catch			9.1
	M	4.8	0	89.7	0	5.0	0	16.6	4.5	0	4.7	0	0	0	1.5				7.3
	B	0	0	5.0	0	0	0	0.8	0	0	0	0	0	0	0.0				0.3
	Mean	1.6	1.3	58.6	1.3	3.0	1.4	11.2	4.3	1.2	10.7	0	0	0	2.7				5.6
JUN 15-16	S	21.1	38.0	30.4	9.0	14.1	15.6	21.4	12.8	0	8.7	0	9.7	0	5.2	4.4	4.5	3.7	11.5
	M	0	15.4	18.5	14.9	5.1	25.8	13.3	0	19.5	22.6	4.8	5.2	0	8.7	5.4	0	0	9.1
	B	5.0	5.0	9.7	9.9	10.7	17.8	9.7	5.5	0	4.9	10.6	0	0	3.5	0	5.7	8.5	6.2
	Mean	8.7	19.5	19.5	11.3	10.0	19.8	14.8	6.1	6.5	12.1	5.1	4.9	0	5.8	3.3	3.4	4.1	9.0
JUN 19-20	S	27.8	84.5	97.5	57.0	22.6	4.4	49.0	13.6	32.9	40.8	0	66.9	0	25.7	25.5	17.4	0	32.7
	M	10.1	46.9	64.0	16.7	31.2	4.8	29.0	0	0	4.1	0	5.3	0	1.6	0	0	0	12.2
	B	9.9	39.4	15.9	41.9	9.9	4.6	20.3	5.1	4.9	3.9	0	0	4.5	3.1	0	0	4.8	9.7
	Mean	16.0	56.9	59.1	38.5	21.2	4.6	32.7	6.2	12.6	16.3	0	24.1	1.5	10.1	8.5	5.8	1.6	18.2
JUN 26	S	4.6	290.8	37.2	4.8	8.8	0	57.7	15.1	9.3	13.2	4.4	12.7	4.6	9.9	14.9	9.4	27.2	30.5
	M	4.8	71.4	24.2	0	0	0	16.7	4.3	9.7	8.6	0	0	0	3.8	0	0	0	8.2
	B	0	66.2	4.8	0	4.8	0	12.6	0	9.8	21.2	8.9	0	0	6.7	0	15.2	0	8.7
	Mean	3.1	142.8	22.1	1.6	4.5	0	29.0	6.5	9.6	14.3	4.4	4.2	1.5	6.8	5.0	8.2	9.1	15.8
JUL 5-6	S	298.0	93.4	251.1	51.8	60.6	251.9	167.8	412.2	18.3	47.1	15.2	8.9	21.7	87.2	16.1	0	0	103.1
	M	161.5	24.8	250.7	5.4	16.6	64.8	87.3	42.3	0	9.7	0	4.8	0	9.5	0	0	0	38.7
	B	134.9	44.1	120.8	0	10.9	17.7	54.7	21.4	21.7	4.9	0	0	0	8.0	0	0	0	25.1
	Mean	198.1	54.1	207.5	19.1	29.3	111.5	103.3	158.6	13.3	20.6	5.1	4.6	7.2	34.9	5.4	0	0	55.6
JUL 12-13	S	116.6	36.6	62.8	25.9	34.2	4.3	46.7	36.8	35.5	26.9	35.1	19.8	4.0	26.4	11.3	7.0	0	30.5
	M	181.4	41.9	69.9	25.7	115.5	0	72.4	47.7	8.5	21.3	5.9	5.3	0	14.8	0	0	0	34.9
	B	96.8	41.5	55.8	21.7	107.0	14.4	56.2	34.4	4.2	8.5	10.9	0	0	9.7	0	0	3.9	26.6
	Mean	131.6	40.0	62.8	24.4	85.6	6.2	58.4	39.6	16.1	18.9	17.3	8.4	1.3	16.9	3.8	2.3	1.3	30.6
JUL 17-18	S	76.4	33.3	153.2	110.6	33.6	8.4	69.3	43.0	25.8	35.9	75.7	12.6	195.8	64.8	67.4	16.1	0	59.2
	M	24.7	25.0	104.2	79.6	39.5	5.3	46.4	13.8	21.8	23.9	22.3	20.9	907.6	168.4	10.2	0	0	86.6
	B	15.8	39.7	112.0	295.8	51.9	30.7	91.0	57.3	5.9	5.3	80.1	0	140.3	48.2	5.7	0	0	56.0
	Mean	39.0	32.7	123.1	162.0	41.7	14.8	68.9	38.0	17.8	21.7	59.4	11.2	414.6	93.8	27.8	5.4	0	67.3
JUL 24-25	S	9.1	50.0	8.3	73.0	16.2	53.0	34.9	0	75.3	9.4	28.0	12.5	16.7	23.7	82.5	85.6	21.0	36.0
	M	15.2	49.6	33.8	17.0	23.4	12.0	25.2	37.7	51.7	26.7	22.4	0	5.1	23.9	27.5	16.2	0	22.6
	B	16.0	17.5	10.1	27.9	21.5	29.5	20.4	10.8	0	27.9	0	0	6.3	7.5	0	0	0	11.2
	Mean	13.4	39.0	17.4	39.3	20.3	31.5	26.8	16.2	42.3	21.3	16.8	4.2	9.4	18.4	36.7	33.9	7.0	23.3

* Number per 1000 m³.

** S = surface, M = mid-depth, B = bottom.

*** Stations along contours are established within 3-, 1-, and 1/2-mile radii east and west of Nine Mile Point Station, Unit 1.



Abundance* of Alewife Postlarvae in Day Ichthyoplankton Collections,
 Nine Mile Point Vicinity, 1978

(No alewife postlarvae were collected in day samples after November)

Date	Sample Depth**	20-Ft Contour***						40-Ft Contour***						60-Ft NMPP	80-Ft NMPP	100-Ft NMPP	Grand Mean		
		3-West	1-West	1/2-West	1/2-East	1-East	3-East	Mean	3-West	1-West	1/2-West	1/2-East	1-East					3-East	Mean
2 Oct	S	0	0	4.5	8.3	4.3	0	2.9	0	4.2	0	0	0	0	0.7	No Catch	1.4		
	H	5.1	0	5.0	0	0	0	1.7	0	0	0	0	0	0	0		0.7		
	B	0	0	0	0	0	0	0	0	0	0	0	0	0	0		0		
	Mean	1.7	0	3.2	2.8	1.4	0	1.5	0	1.4	0	0	0	0	0.2		0.7		
9 Oct	S	15.7	0	4.1	0	3.8	0	3.9	0	0	8.5	0	0	14.9	3.9	0	0	0	3.1
	H	5.3	0	4.8	5.4	4.7	4.7	4.2	0	0	0	5.0	0	0	0.8	0	0	0	2.0
	B	0	0	0	0	0	25.5	4.3	0	0	0	0	0	0	0	0	0	0	1.7
	Mean	7.0	0	2.9	1.8	2.9	10.1	4.1	0	0	2.8	1.7	0	5.0	1.6	0	0	0	2.3
16 Oct	S	0	3.6	3.6	17.0	0	0	4.0	0	0	26.5	4.0	0	0	5.1	0	0	0	3.6
	H	0	0	8.5	0	0	0	1.4	0	0	8.5	0	3.9	0	2.1	0	3.9	0	1.7
	B	0	0	0	4.8	0	0	0.8	0	0	0	0	0	0	0	0	0	0	0.3
	Mean	0	1.2	4.1	7.3	0	0	2.1	0	0	11.7	1.3	1.3	0	2.4	0	1.3	0	1.9
24 Oct	S	0	0	0	0	0	4.7	0.8	0	4.1	0	0	0	0	0.7	4.6	0	0	0.9
	H	0	0	0.6	0	0	0	0.1	5.2	0	0	0	0	0	0.9	0	0	0	0.4
	B	0	0	4.9	0	0	0	0.8	0	0	0	0	0	0	0	0	0	0	0.3
	Mean	0	0	1.8	0	0	1.6	0.6	1.7	1.4	0	0	0	0	0.5	1.5	0	0	0.5
30 Oct	S	4.2	0	0	0	0	0	0.7	0	0	0	4.2	0	0	0.7	No Catch	0.6		
	H	0	0	0	5.5	0	5.9	1.9	4.4	0	0	0	0	0	0.7		1.1		
	B	5.3	0	0	5.5	0	0	1.8	0	0	0	0	0	0	0		0.7		
	Mean	3.2	0	0	3.7	0	2.0	1.5	1.5	0	0	1.4	0	0	0.5		0.8		
6 Nov	S	0	0	0	0	0	3.9	0.7	0	0	0	0	0	0	0	No Catch	0.3		
	H	0	0	0	0	0	0	0	0	0	0	0	0	0	0		0		
	B	0	0	0	0	0	0	0	0	0	0	0	4.6	0	0.8		0.3		
	Mean	0	0	0	0	0	1.3	0.2	0	0	0	0	1.5	0	0.3		0.2		
13 Nov	S	0	0	0	0	0	0	0	No Catch						0	No Catch	0		
	H	0	0	4.5	0	5.0	0	1.6							0		0.6		
	B	0	0	0	0	0	0	0							0		0		
	Mean	0	0	1.5	0	1.7	0	0.5							0		0.2		
21 Nov	S	No Catch							4.1	0	0	0	0	0	0.7	No Catch	0.3		
	H								0	0	0	0	0	0	0		0		
	B								0	12.6	0	0	0	0	2.1		0.8		
	Mean								1.4	4.2	0	0	0	0	0.9		0.4		
28 Nov	S	No Catch							No Catch							No Catch			
	H																		
	B																		
	Mean																		

* Number per 1000 m³.

** S = surface, H = mid-depth, B = bottom.

*** Stations along contours are established within 3-, 1-, and 1/2-mile radii east and west of Nine Mile Point Station, Unit 1.

I-C-34

science services division





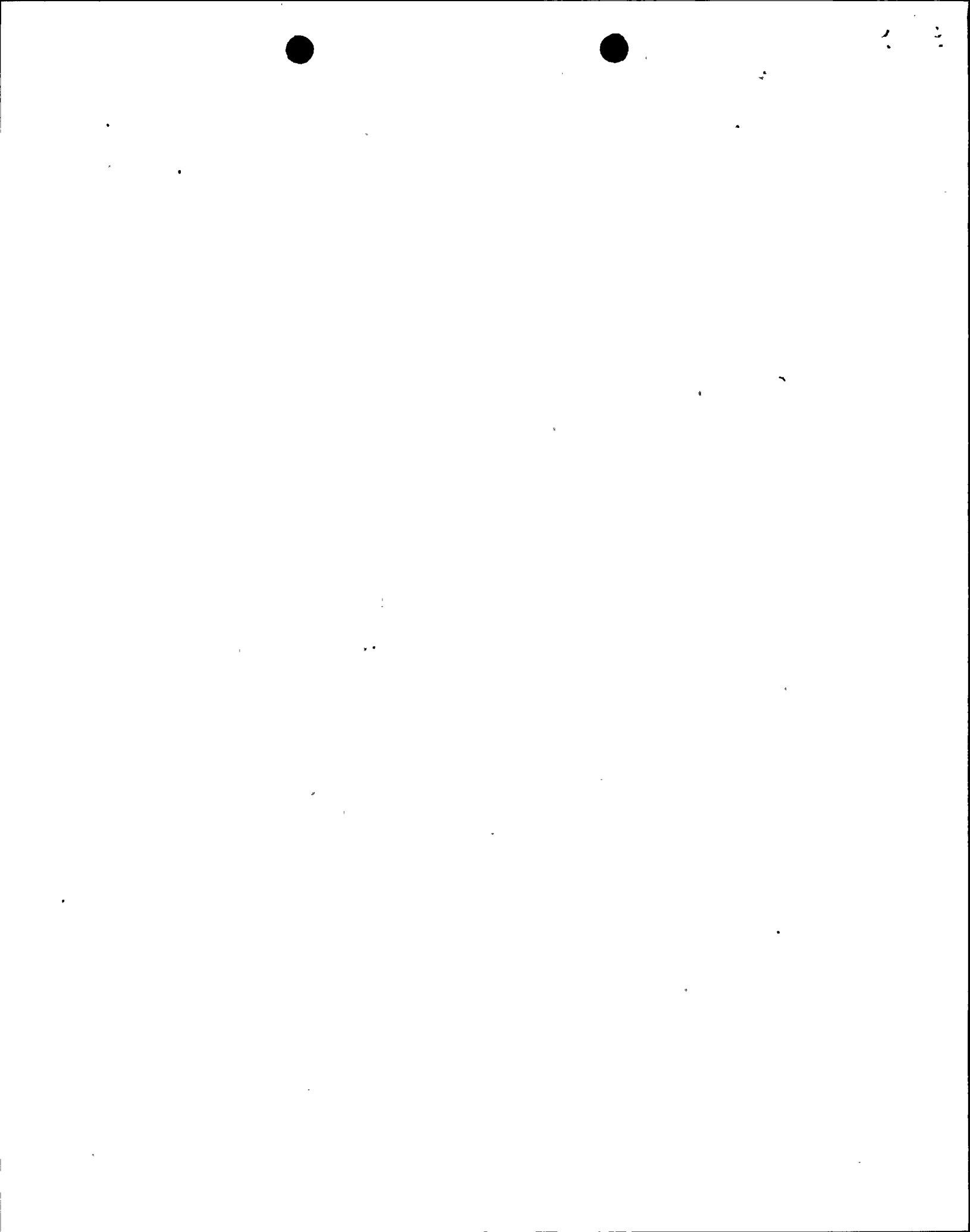
Abundance* of Total Postlarvae (All Species Combined) in Day Ichthyoplankton Collections,
Nine Mile Point Vicinity, 1978

Date	Sample Depth**	20-Ft Contour***							40-Ft Contour***							60-Ft NMPP	80-Ft NMPP	100-Ft NMPP	Grand Mean
		3-West	1-West	1/2-West	1/2-East	1-East	3-East	Mean	3-West	1-West	1/2-West	1/2-East	1-East	3-East	Mean				
Apr 4	S M B Mean	No Catch							No Catch								No Catch		
Apr 10	S M B Mean	No Catch							No Catch								No Catch		
Apr 17	S M B Mean	No Catch							No Catch								No Catch		
Apr 24	S M B Mean	No Catch							No Catch								No Catch		
May 2	S M B Mean	0	0	0	0	0	0	0									No Catch		0 0.4 0 0.1
May 8	S M B Mean	No Catch							No Catch								No Catch		
May 15	S M B Mean	0	0	0	0	0	0	0									No Catch		0 0.4 0.7 0.3
May 22	S M B Mean	48.6	21.3	35.0	98.9	122.8	45.4	62.0	34.3	16.8	91.2	20.1	33.6	45.1	40.2	37.6	0	0	43.4
		94.1	59.9	34.1	118.4	135.4	61.3	83.9	30.5	21.3	25.8	42.8	35.2	30.5	31.0	27.6	4.9	0	48.1
		66.8	130.2	24.4	55.4	91.2	87.8	76.0	11.3	15.8	22.6	5.6	52.9	32.7	23.5	5.4	0	0	40.2
		69.8	70.5	31.2	90.9	116.5	64.8	74.0	25.4	18.0	46.5	22.8	40.6	36.1	31.6	23.6	1.6	0	43.9
May 30	S M B Mean	8.4	0	8.2	4.4	8.4	8.0	6.2	22.6	12.0	4.2	3.6	7.5	3.8	9.0	3.9	11.3	11.0	7.8
		48.7	20.6	10.2	34.2	73.0	24.5	35.2	31.7	25.2	4.9	25.3	39.9	22.0	24.8	14.6	0	4.9	25.3
		78.8	5.1	19.4	14.1	9.5	24.2	25.2	0	0	0	0	8.7	13.9	3.8	0	0	4.5	11.9
		45.3	8.6	12.6	17.6	30.3	18.9	22.2	18.1	12.4	3.0	9.6	18.7	13.2	12.5	6.2	3.8	6.8	15.0

* Number per 1000 m³.

** S = surface, M = mid-depth, B = bottom.

*** Stations along contours are established within 3-, 1-, and 1/2-mile radii east and west of Nine Mile Point Station, Unit 1.



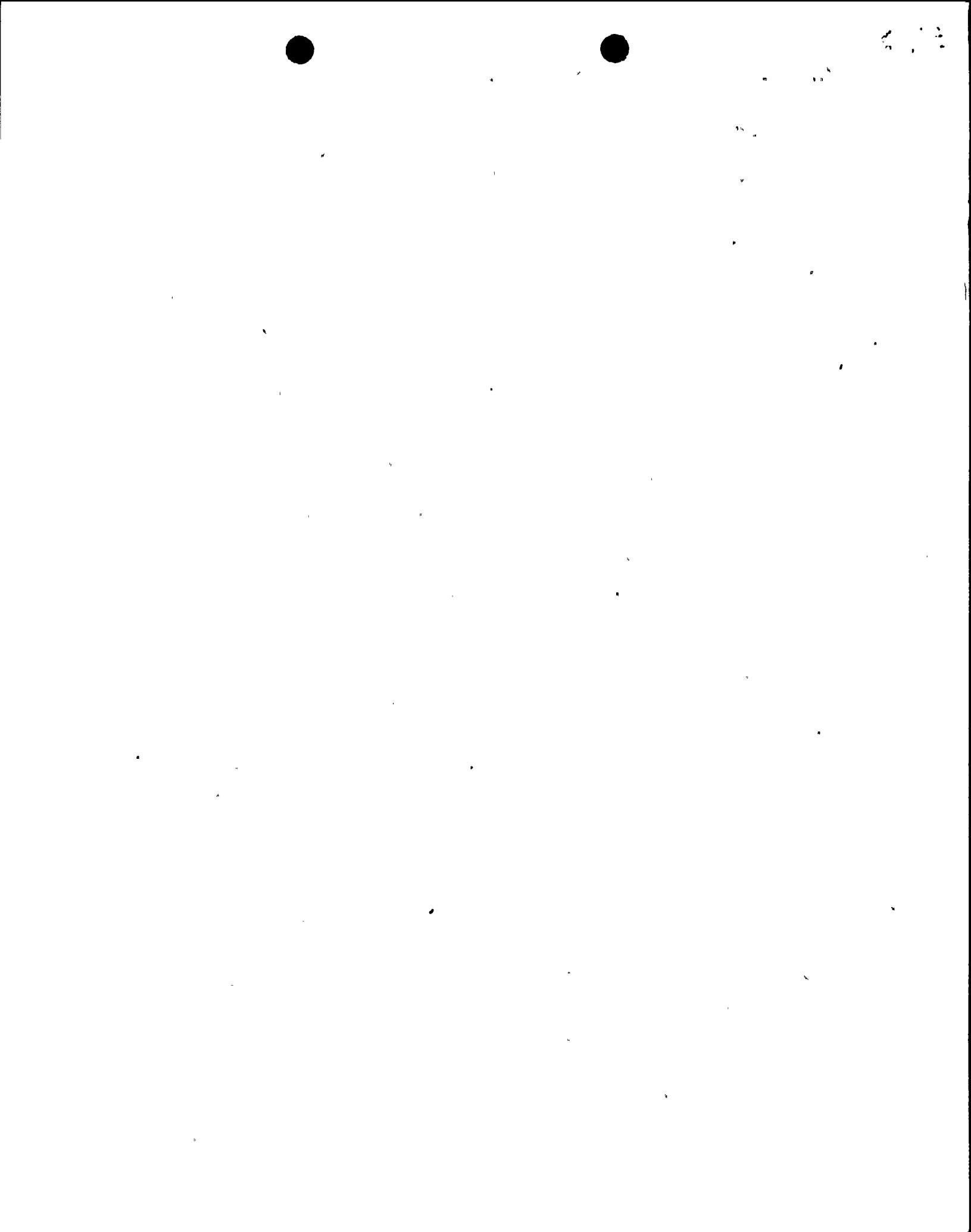
Abundance* of Total Postlarvae (All Species Combined) in Day Ichthyoplankton Collections,
Nine Mile Point Vicinity, 1978

Date	Sample Depth**	20-Ft Contour***							40-Ft Contour***							60-Ft NMPP	80-Ft NMPP	100-Ft NMPP	Grand Mean
		3-West	1-West	1/2-West	1/2-East	1-East	3-East	Mean	3-West	1-West	1/2-West	1/2-East	1-East	3-East	Mean				
JUN 5	S	4.8	22.9	16.1	0	9.6	11.2	10.8	51.2	30.6	61.3	9.1	14.0	48.0	35.7	0.7	25.7	16.3	21.4
	M	5.1	21.5	0	0	0	9.1	6.0	29.2	14.5	48.1	5.0	36.2	26.5	24.9	30.8	20.4	18.1	
	B	5.0	21.0	0	0	0	10.3	6.1	31.0	14.8	0	0	5.6	15.5	11.2	14.5	4.9	5.2	8.5
	Mean	4.9	21.8	5.4	0	3.2	10.2	7.6	37.1	20.0	36.5	4.7	18.6	29.9	24.5	13.4	20.5	14.0	16.0
JUN 12	S	21.0	17.2	16.8	21.7	9.2	0	14.3	4.5	0	18.0	4.4	26.0	36.0	14.8	29.6	42.5	13.3	17.3
	M	29.1	10.9	11.5	0	29.1	0	13.4	16.8	5.7	16.5	19.3	72.9	73.0	34.0	39.6	39.5	6.0	24.7
	B	23.4	52.0	57.4	20.9	25.3	10.3	31.6	0	21.1	10.1	16.9	29.2	30.2	17.9	5.1	0	10.8	20.8
	Mean	24.5	26.7	28.5	14.2	21.2	3.4	19.8	7.1	8.9	14.8	13.5	42.7	46.4	22.2	24.7	27.3	10.1	20.9
JUN 19	S	4.7	5.2	0	4.5	4.4	4.6	3.9	0	5.2	14.2	14.5	28.4	4.4	11.1	7.5	0	4.4	6.8
	M	11.4	17.3	5.3	11.5	5.7	23.3	12.4	28.9	81.4	15.9	54.4	28.5	58.1	44.5	51.2	0	0	26.2
	B	11.0	5.1	14.1	16.0	16.1	21.1	13.9	16.6	5.3	11.1	10.0	11.4	19.6	12.3	4.9	0	5.2	11.2
	Mean	9.0	9.2	6.5	10.6	8.8	16.3	10.1	15.2	30.6	13.8	26.3	22.8	27.4	22.7	21.2	0	3.2	14.7
JUN 26	S	0	0	0	0	5.2	9.3	2.4	0	0	0	0	9.9	4.3	2.4	0	9.7	9.3	3.2
	M	4.6	0	0	20.0	0	0	4.1	5.0	9.7	0	10.5	9.9	4.6	6.6	0	9.4	4.4	5.2
	B	0	0	5.0	0	0	0	0.8	0	0	0	5.2	0	12.4	2.9	0	14.8	2.5	
	Mean	1.5	0	1.7	6.7	1.7	3.1	2.5	1.7	3.2	0	5.2	6.6	7.1	4.0	0	6.4	9.5	3.6
JUL 5	S	203.2	232.9	18.6	21.0	315.3	329.7	186.8	211.8	75.9	9.6	214.4	668.7	473.0	275.6	97.7	49.9	20.6	196.2
	M	55.2	29.9	0	81.9	234.1	90.7	82.0	-5.4	11.1	0	39.3	130.5	41.5	38.0	5.5	0	0	48.3
	B	21.6	5.8	6.0	70.1	31.7	30.5	27.6	0	0	43.2	12.1	25.3	10.2	15.1	0	5.3	0	17.5
	Mean	93.3	89.5	8.2	57.6	193.7	150.3	98.8	72.4	29.0	17.6	88.6	274.8	174.9	109.6	34.4	18.4	6.9	87.3
JUL 10	S	1268.0	1544.0	139.6	124.7	517.4	98.8	615.4	6207.6	305.6	32.0	1610.3	495.2	256.1	1484.5	723.5	1416.2	2588.0	1154.9
	M	314.4	39.2	36.6	34.8	94.8	27.2	91.2	244.5	64.2	28.5	82.4	31.0	21.4	78.7	127.6	49.9	92.9	86.0
	B	522.0	48.5	20.4	21.6	109.6	31.6	125.6	124.5	19.0	231.4	133.9	58.3	32.1	99.9	98.3	165.3	211.2	121.8
	Mean	701.5	543.9	65.5	60.4	240.6	52.5	277.4	2192.2	129.6	97.3	608.9	194.8	103.2	554.3	316.4	543.8	964.0	454.3
JUL 17	S	176.4	528.5	825.1	270.1	165.1	327.7	382.2	154.5	106.8	136.5	49.3	670.9	351.6	244.9	40.5	326.5	242.6	291.5
	M	103.3	33.2	63.1	126.6	251.9	210.6	131.5	56.4	41.4	117.8	27.7	48.6	85.6	62.9	4.2	17.9	8.5	79.8
	B	4.3	300.2	294.9	40.9	138.2	40.4	136.5	8.3	8.0	4.1	7.7	33.2	37.8	16.5	3.6	15.8	18.6	63.7
	Mean	94.7	287.3	394.4	145.9	185.1	192.9	216.7	73.1	52.1	86.1	28.3	250.9	158.3	108.1	16.1	120.0	89.9	145.0
JUL 24	S	83.4	54.5	255.4	948.9	582.4	1519.1	574.0	137.9	163.7	394.5	297.7	980.0	1297.5	545.2	523.7	358.0	513.0	540.6
	M	110.7	20.5	151.9	972.0	788.9	826.5	478.4	174.3	53.1	137.8	101.7	292.2	81.1	140.0	203.8	49.5	14.0	265.2
	B	144.5	68.9	121.6	896.8	497.7	607.5	389.5	283.4	149.3	131.9	188.4	295.4	149.5	199.7	182.4	66.9	52.8	255.8
	Mean	112.9	48.0	176.3	939.2	623.0	984.4	480.6	198.5	122.1	221.4	195.9	522.5	509.4	295.0	303.3	158.2	193.3	353.9

* Number per 1000 m³.

** S = surface, M = mid-depth, B = bottom.

*** Stations along contours are established within 3-, 1-, and 1/2-mile radii east and west of Nine Mile Point Station, Unit 1.



Abundance* of Total Postlarvae (All Species Combined) in Day Ichthyoplankton Collections,
Nine Mile Point Vicinity, 1978

Date	Sample Depth**	20-Ft Contour***							40-Ft Contour***							60-Ft NMPP	80-Ft NMPP	100-Ft NMPP	Grand Mean
		3-West	1-West	1/2-West	1/2-East	1-East	3-East	Mean	3-West	1-West	1/2-West	1/2-East	1-East	3-East	Mean				
31 July	S	40.3	17.9	40.3	1611.7	330.5	1010.6	508.6	32.2	14.2	71.9	259.3	235.9	1448.2	343.6	171.8	489.0	691.0	431.0
	M	21.3	8.5	41.0	207.7	43.0	277.1	99.8	41.3	17.3	32.7	74.3	51.3	103.3	53.4	22.6	530.5	20.2	99.5
	B	8.7	19.9	8.7	174.6	40.9	263.6	86.1	8.3	8.7	12.3	56.6	13.1	63.1	27.0	18.0	71.8	48.1	54.5
	Mean	23.4	15.4	30.0	664.7	138.1	517.1	231.5	27.3	13.4	38.9	130.1	100.1	538.2	141.3	70.8	363.8	253.1	195.0
7 Aug	S	215.8	89.5	76.3	301.2	368.2	189.6	206.8	271.5	92.0	91.6	97.9	844.1	2061.8	576.5	154.5	175.3	170.9	346.7
	M	373.3	137.0	127.9	48.7	140.9	52.6	146.7	110.6	73.8	46.9	103.0	100.3	309.8	124.1	84.3	30.6	33.7	118.2
	B	337.9	144.8	184.1	82.0	282.1	147.2	196.4	41.9	33.6	23.2	218.3	185.9	256.4	126.6	51.2	23.3	21.6	135.6
	Mean	309.0	123.8	129.5	143.9	263.7	129.8	183.3	141.4	66.5	53.9	139.7	376.8	876.0	275.7	96.7	76.4	75.4	200.2
14 Aug	S	998.3	1055.5	174.7	44.4	324.3	213.4	468.4	178.7	279.3	106.0	223.9	1140.8	412.8	390.3	35.9	116.3	95.6	360.0
	M	700.5	1665.9	309.1	37.3	254.7	241.5	534.8	120.0	224.1	20.3	46.5	100.2	41.7	92.1	0	45.7	17.7	255.0
	B	327.7	320.8	193.2	16.2	101.5	112.4	178.6	153.5	142.1	10.6	34.7	93.0	53.8	81.3	15.7	5.2	4.6	105.7
	Mean	675.5	1014.1	225.7	32.6	226.8	189.1	394.0	150.8	215.2	45.6	101.7	444.7	169.4	187.9	17.2	55.8	39.3	240.2
21 Aug	S	4.0	15.3	3.8	106.0	545.3	285.4	160.0	13.6	27.1	4.3	36.6	925.2	166.5	195.6	35.4	56.7	72.5	153.2
	M	8.8	36.1	13.2	168.7	651.4	189.9	178.0	44.6	4.8	12.7	43.0	157.4	61.9	54.1	22.4	7.5	0	94.8
	B	21.4	8.4	8.7	32.2	147.5	143.5	60.3	12.2	13.9	4.1	8.1	65.6	46.8	25.1	3.7	0	0	34.4
	Mean	11.4	20.0	8.7	102.3	448.1	206.3	132.8	23.5	15.3	7.0	29.2	382.7	91.8	91.6	20.5	21.4	24.2	94.1
28 Aug	S	0	3.9	0	4.3	52.2	28.1	14.8	3.9	4.4	0	28.4	17.2	11.6	10.9	11.4	30.2	0	13.0
	M	0	4.2	0	8.5	31.6	12.9	9.5	0	0	0	0	0	0	0	0	0	0	3.8
	B	0	0	4.6	0	0	0	0.8	0	0	0	0	0	0	0	0	0	0	0.3
	Mean	0	2.7	1.5	4.3	27.9	13.7	8.4	1.3	1.5	0	9.5	5.7	3.9	3.6	3.8	10.1	0	5.7
5 Sept	S	68.3	80.8	52.6	31.8	97.5	15.9	57.8	12.5	16.3	574.3	38.4	32.5	8.1	113.7	7.2	0	0	69.1
	M	113.7	86.2	33.4	26.5	13.9	28.5	50.4	13.8	26.1	26.5	4.3	8.4	4.8	14.0	0	4.1	0	26.0
	B	10.0	24.4	18.3	0	11.7	0	10.7	4.7	4.5	4.5	5.1	0	0	3.1	5.0	0	0	5.9
	Mean	64.0	63.8	34.8	19.4	41.0	14.8	39.6	10.3	15.6	201.8	15.9	13.6	4.3	43.6	4.1	1.4	0	33.7
11 Sept	S	4.0	0	7.6	0	3.9	26.5	7.0	0	0	7.3	0	8.2	8.0	3.9	3.8	0	0	4.6
	M	0	0	4.2	0	4.7	24.3	5.5	4.7	0	12.1	0	13.8	0	5.1	0	0	0	4.3
	B	0	0	0	4.5	0	0	0.8	0	0	0	0	0	0	0	0	0	0	0.3
	Mean	1.3	0	3.9	1.5	2.9	16.9	4.4	1.6	0	6.5	0	7.3	2.7	3.0	1.3	0	0	3.1
18 Sept	S	0	0	0	0	0	0	0	0	0	0	0	0	0	0	NO CATCH			0
	M	0	0	0	0	0	0	0	0	0	0	0	0	0	0	NO CATCH			0
	B	0	0	0	5.0	0	0	0.8	0	0	0	0	0	4.6	0.8	NO CATCH			0.6
	Mean	0	0	0	1.7	0	0	0.3	0	0	0	0	0	1.5	0.3	NO CATCH			0.2
26 Sept	S	0	4.4	0	4.5	0	4.8	2.3	0	0	0	4.9	9	4.4	1.6	0	0	0	1.6
	M	5.0	0	0	5.0	4.7	10.2	4.2	0	4.9	0	0	25.0	0	5.0	0	0	0	3.7
	B	0	0	0	0	0	9.6	1.6	0	0	0	0	0	0	0	0	0	0	0.6
	Mean	1.7	1.5	0	3.2	1.6	8.2	2.7	0	1.6	0	1.6	8.4	1.5	2.2	0	0	0	1.9

* Number per 1000 m³.

** S = surface, M = mid-depth, B = bottom.

*** Stations along contours are established within 3-, 1-, and 1/2-mile radii east and west of Nine Mile Point Station, Unit 1.

I-C-55

science services division

Abundance* of Total Postlarvae (All Species Combined) in Day Ichthyoplankton Collections,
Nine Mile Point Vicinity, 1978

(No postlarvae were collected in day samples after November)

Date	Sample Depth**	20-Ft Contour***							40-Ft Contour***							60-Ft NMPP	80-Ft NMPP	100-Ft NMPP	Grand Mean	
		3-West	1-West	1/2-West	1/2-East	1-East	3-East	Mean	3-West	1-West	1/2-West	1/2-East	1-East	3-East	Mean					
2 Oct	S	0	0	4.5	8.3	4.3	0	2.9	0	4.2	0	0	0	0	0.7	No Catch		1.4		
	M	5.1	0	5.0	0	0	0	1.7	0	0	0	0	0	0	0				0.7	
	B	0	0	0	0	0	0	0	0	0	0	0	0	0	0				0	
	Mean	1.7	0	3.2	2.8	1.4	0	1.5	0	1.4	0	0	0	0	0.2				0.7	
9 Oct	S	15.7	0	4.1	0	3.8	0	3.9	0	0	8.5	0	0	14.9	3.9	0	0	0	3.1	
	M	5.3	0	4.8	5.4	4.7	4.7	4.2	0	0	5.0	0	0	0	0.8	0	0	0	2.0	
	B	0	0	0	0	0	25.5	4.3	0	0	0	0	0	0	0	0	0	0	1.7	
	Mean	7.0	0	2.9	1.8	2.9	10.1	4.1	0	0	2.8	1.7	0	5.0	1.6	0	0	0	2.3	
16 Oct	S	0	3.6	3.6	17.0	0	0	4.0	0	0	26.5	4.0	0	0	5.1	0	0	0	3.6	
	M	0	0	8.5	0	0	0	1.4	0	0	8.5	0	3.9	0	2.1	0	3.9	0	1.7	
	B	0	0	0	4.8	0	0	0.8	0	0	0	0	0	0	0	0	0	0	0.3	
	Mean	0	1.2	4.1	7.3	0	0	2.1	0	0	11.7	1.3	1.3	0	2.4	0	1.3	0	1.9	
24 Oct	S	0	0	0	0	0	4.7	0.8	0	4.1	0	0	0	0	0.7	4.6	0	0	0.9	
	M	0	0	0.6	0	0	0	0.1	5.2	0	0	0	0	0.9	0	0	0	0	0.4	
	B	0	0	4.9	0	0	0	0.8	0	0	0	0	0	0	0	0	0	0	0.3	
	Mean	0	0	1.8	0	0	1.6	0.6	1.7	1.4	0	0	0	0	0.5	1.5	0	0	0.5	
30 Oct	S	4.2	0	0	0	0	0	0.7	0	0	0	4.2	0	0	0.7	No Catch		0.6		
	M	0	0	0	5.5	0	5.9	1.9	4.4	0	0	0	0	0	0.7				1.6	
	B	5.3	0	0	5.5	0	0	1.8	0	0	0	0	0	0	0				0.7	
	Mean	3.2	0	0	3.7	0	2.0	1.5	1.5	0	0	1.4	0	0.5	0.8					
6 Nov	S	0	0	0	0	0	3.9	0.7	0	0	0	0	0	0	0	No Catch		0.3		
	M	0	0	0	0	0	0	0	0	0	0	0	0	0	0				0.3	
	B	0	0	0	0	0	0	0	0	0	0	4.6	0	0.8	0.2					
	Mean	0	0	0	0	0	1.3	0.2	0	0	0	0	1.5	0	0.3					
13 Nov	S	0	0	0	0	0	0	0	No Catch							0	No Catch		0	
	M	0	0	4.5	0	5.0	0	1.6								0				0.6
	B	0	0	0	0	0	0	0								0				0
	Mean	0	0	1.5	0	1.7	0	0.5								0				0.2
21 Nov	S	No Catch							4.1	0	0	0	0	0	0.7	No Catch		0.3		
	M	No Catch							0	0	0	0	0	0	0				0.8	
	B	No Catch							0	12.6	0	0	0	0	2.1				0.4	
	Mean	No Catch							1.4	4.2	0	0	0	0	0.9					
28 Nov	S	No Catch							No Catch								No Catch			
	M	No Catch							No Catch											
	B	No Catch							No Catch											
	Mean	No Catch							No Catch											

* Number per 1000 m³.

** S = surface, M = mid-depth, B = bottom.

*** Stations along contours are established within 3-, 1-, and 1/2-mile radii east and west of Nine Mile Point Station, Unit 1.

