

REGULATORY INFORMATION DISTRIBUTION SYSTEM (RIDS)

ACCESSION. NBR: 7904110252 DOC. DATE: 79/04/04 NOTARIZED: NO DOCKET #
 FACIL: 50-322 SHOREHAM NUCLEAR POWER STATION, LONG ISLAND LIGHTING 05000322
 50-352 LIMERICK GENERATING STATION, UNIT 1, PHILADELPHIA ELE 05000352
 50-353 LIMERICK GENERATING STATION, UNIT 2, PHILADELPHIA ELE 05000353
 AUTH. NAME AUTHOR AFFILIATION 358/367/
 SOBON, L.J. GENERAL ELECTRIC CO., NUCLEAR ENERGY PRODUCTS DIV. 373/374/
 RECIP. NAME RECIPIENT AFFILIATION 387/388/397/410
 STOLZ, J.F. LIGHT WATER REACTORS BRANCH 3

SUBJECT: FORWARDS REPT NEDO-23697A, "SCALED MULTIVALENT TEST PROGRAM
 PLAN - PHASE I," DTD JAN 1979.

DISTRIBUTION CODE: T002S COPIES RECEIVED: LTR 1 ENCL 70 SIZE: 1 + 89
 TITLE: TOPICAL REPORTS & CORRESPONDENCE RE MARK II CONTAINMENT.

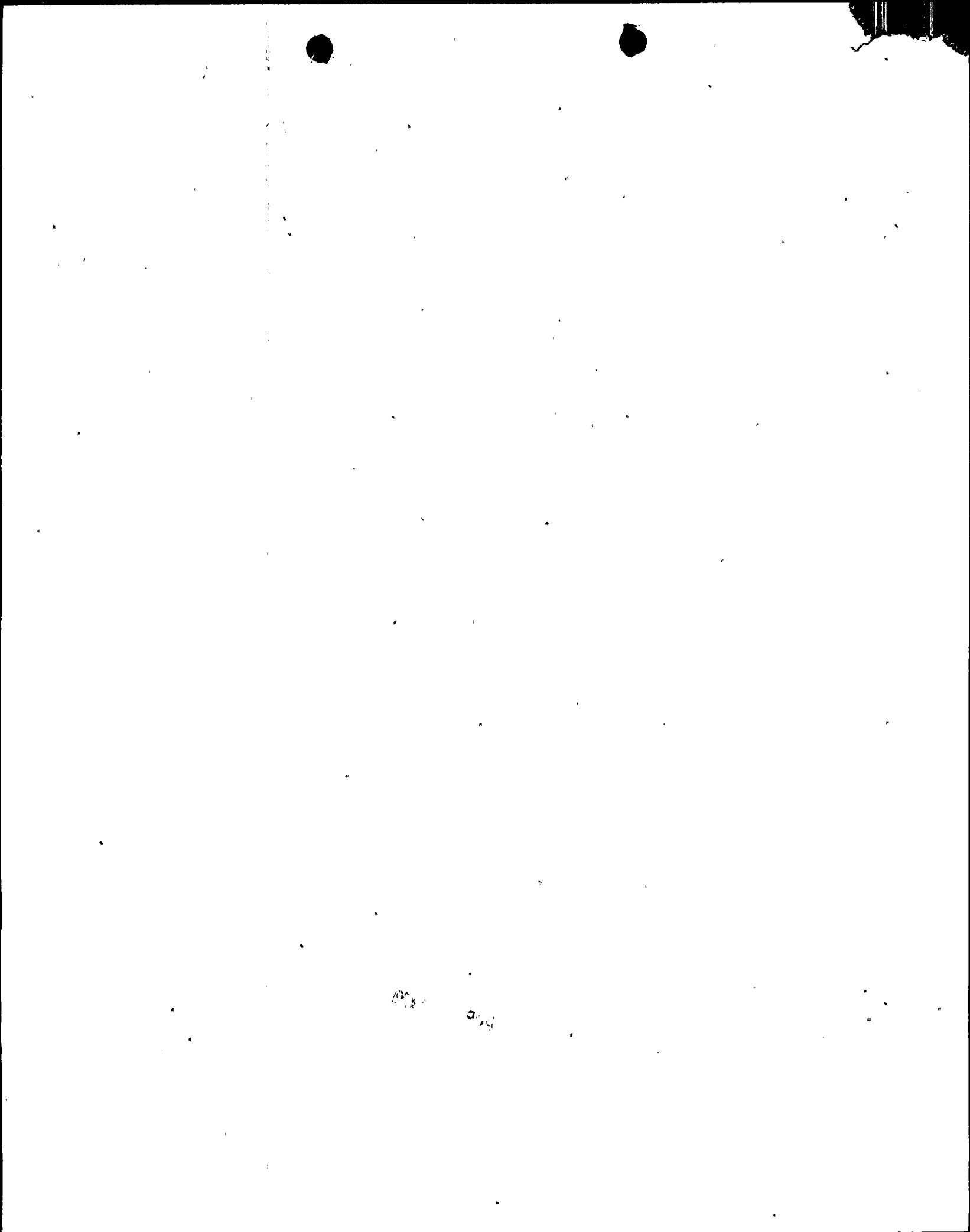
NOTES: HULLMAN W/1 CY ALL MATL. SEND I & E 3CYS FSAR & ALL AMDTS
PM - 2CYS ALL MATL. BILL PATON (OELD) 1CY ER AMDTS.

	RECIPIENT ID CODE/NAME	COPIES		RECIPIENT ID CODE/NAME	COPIES	
		LTR	ENCL		LTR	ENCL
INTERNAL:	01 CENTRAL FILE	2	2	03 NRC PDR	1	1
	05 ANDERSON, C.	1	1	06 CONTMNT SYS	7	7
	13 STRUC ENG BR	2	2	15 AD FOR ENGR	2	2
	17 PELTIER, I.	1	1	18 LYNCH, M.D.	1	1
	19 SNELL, J.	1	1	20 BOURNIA, A.	1	1
	21 KANE, W.	1	1	22 MINER, S.	1	1
	23 TIBBETTS, D.	1	1	50-322 FILE	1	0
	50-352 FILE	1	0	50-353 FILE	1	0
	50-358 FILE	1	0	50-367 FILE	1	0
	50-373 FILE	1	0	50-374 FILE	1	0
	50-387 FILE	1	0	50-388 FILE	1	0
	50-397 FILE	1	0	50-410 FILE	1	0
	AD PLANT SYS	1	0	DEPUTY DIR DPM	1	0
	LWR#1 CHIEF	1	0	LWR#2 CHIEF	1	0
	LWR#3 CHIEF	1	0	LWR#4 CHIEF	1	0
	RUSHBROOK, M.	1	0	VASSALLO, D.	1	0
EXTERNAL:	04 NSIC	1	1	24 PT JEFER-PDR	1	1
	25PTSTWN, PA-PDR	1	1	26BTAVIA, OH-PDR	1	1
	27CHSTWN, IN-PDR	1	1	28OGLSBY, IL-PDR	1	1
	29RCHLND, WA-PDR	1	1	30OSWEGO, NY-PDR	1	1
	31WLKSB, PA-PDR	1	1	32 ACRS	16	16

APR 13 1979

*ma 2
76*

TOTAL NUMBER OF COPIES REQUIRED: LTR 66 ENCL 47



GENERAL ELECTRIC

NUCLEAR ENERGY
PROJECTS DIVISION

GENERAL ELECTRIC COMPANY, 175 CURTNER AVE., SAN JOSE, CALIFORNIA 95125
Mail Code 905, Telephone (408) 925-3495

MFN-092-79

April 04, 1979

U. S. Nuclear Regulatory Commission
Office of Nuclear Reactor Regulation
Washington, D. C. 20555

Attention: Mr. John F. Stolz, Chief
Lightwater Reactors Branch No. 3
Division of Reactor Licensing

Gentlemen:

SUBJECT: MARK II CONTAINMENT SUPPORTING PROGRAM REPORT,
"SCALED MULTIVENT TEST PROGRAM PLAN - PHASE I",
NEDO-23697A, JANUARY 1979

Reference: January 3, 1978 letter, Sobon to Stolz,
Mark II Containment Supporting Program Report,
"Preliminary Scaled Multivent Test Program Plan",
NEDO-23697, December 1977

Seventy (70) copies of the subject report are being provided by General Electric Company on behalf of the Mark II Owners Group for your information. This activity is part of Task A.11 of the Mark II Containment Supporting Program.

This report provides an updated description of the program to evaluate multivalent chugging effects in Mark II containments which was originally transmitted to you by my January 3, 1978 letter (reference)..

Very truly yours,



L. J. Sobon, Manager
BWR Containment Licensing
Containment Improvement Programs

Enclosures (70)

cc: C. J. Anderson (NRC)
H. C. Brinkmann (Mark II Owners Group)
H. Chau (Mark II Owners Group)
I. A. Peltier (NRC)
R. L. Tedesco (NRC)
L. S. Gifford (GE Bethesda)

1002
3/1/79

 7904110252

