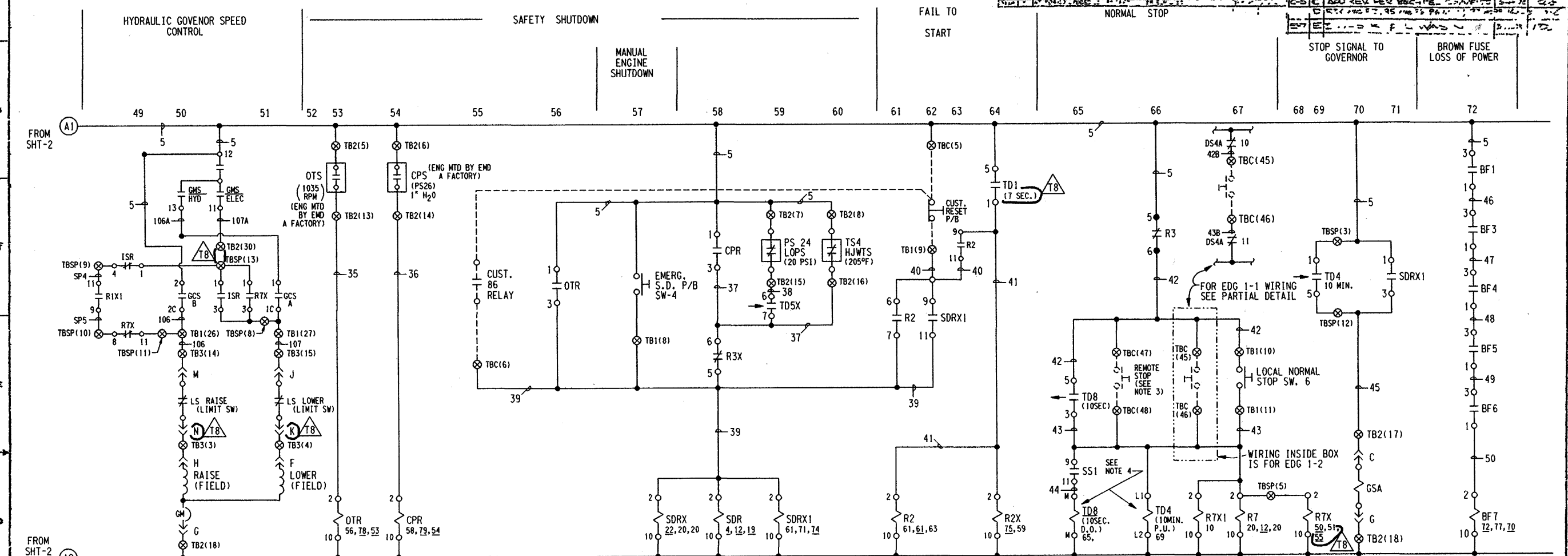


REV. NO.	DATE	DESCRIPTION	BY	CHKD.
0000		REVISIONS		
0001		REVISED WIRE TO CONTACTS		
0002		REVISED WIRE TO CONTACTS		
0003		REVISED WIRE TO CONTACTS		
0004		REVISED WIRE TO CONTACTS		

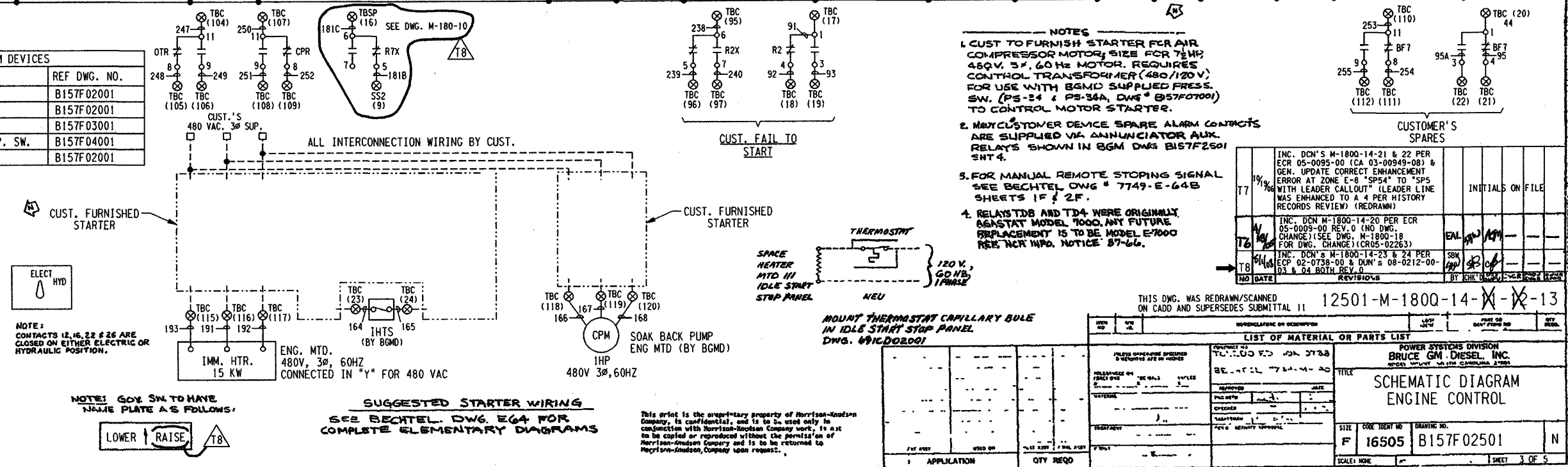
REV. NO.	DATE	DESCRIPTION	BY	CHKD.
0005		REVISED WIRE TO CONTACTS		
0006		REVISED WIRE TO CONTACTS		
0007		REVISED WIRE TO CONTACTS		
0008		REVISED WIRE TO CONTACTS		
0009		REVISED WIRE TO CONTACTS		
0010		REVISED WIRE TO CONTACTS		



DEVICE DESIG	DESCRIPTION	REF DWG. NO.
OTS	OVERSPEED TRIP SW.	B157F02001
CPS	CRANKCASE PRESS. SW.	B157F02001
LOPS	LOW OIL PRESS SW.	B157F03001
HJWTS	HIGH JACKET WATER TEMP. SW.	B157F04001
IHTS	IMM. HTR. TEMP. SW.	B157F02001

CONTACT	ELECT	HYD
12	X	X
16	X	X
22	X	X
26	X	X

CONTACT	L	OFF	R
A	10	10	10
B	20	20	20
C	30	30	30
S	40	40	40



- NOTES**
- CUSTOMER TO FURNISH STARTER FOR AIR COMPRESSOR MOTOR. SIZE FOR 75HP, 480V, 3P, 60HZ MOTOR. REQUIRES CONTROL TRANSFORMER (480/120V) FOR USE WITH BGMD SUPPLIED PRESS. SW. (PS-34 & PS-34A, DWG # B57F07001) TO CONTROL MOTOR STARTER.
  - MAXIMUM CUSTOMER DEVICE SPARE ALARM CONTACTS ARE SUPPLIED VIA ANNUNCIATOR AUX. RELAYS SHOWN IN BGM DWG B157F2501 SHT 4.
  - FOR MANUAL REMOTE STOPPING SIGNAL SEE BECHTEL DWG # 7749-E-64B SHEETS 1F & 2F.
  - RELAYS TDB AND TD4 WERE ORIGINALLY BESTAT MODEL 7000. ANY FUTURE REPLACEMENT IS TO BE MODEL E7000 REE. NCR INFO. NOTICE 87-66.

NO.	DATE	REVISIONS	BY	CHKD.
T7	10/19/78	INC. DCN'S M-1800-14-21 & 22 PER ECR 05-0095-00 (CA 03-00949-08) & GEN. UPDATE CORRECT ENHANCEMENT ERROR AT ZONE E-8 "SP54" TO "SP5" WITH LEADER CALLOUT "LEADER LINE WAS ENHANCED TO A 4 PER HISTORY RECORDS REVIEW" (REDRAWN)		
T8	11/16/78	INC. DCN M-1800-14-20 PER ECR 05-0095-00 REV. 0 (NO DWG CHANGE) (SEE DWG. M-1800-18 FOR DWG. CHANGE) (CROS-02263)		
T9	11/16/78	INC. DCN'S M-1800-14-23 & 24 PER ECR 02-0738-00 & DCN'S 08-0212-00-03 & 04 BOTH REV. 0		

REV. NO.	DATE	DESCRIPTION	BY	CHKD.
1				
2				
3				
4				
5				
6				
7				
8				
9				
10				

REV. NO.	DATE	DESCRIPTION	BY	CHKD.
1				
2				
3				
4				
5				
6				
7				
8				
9				
10				