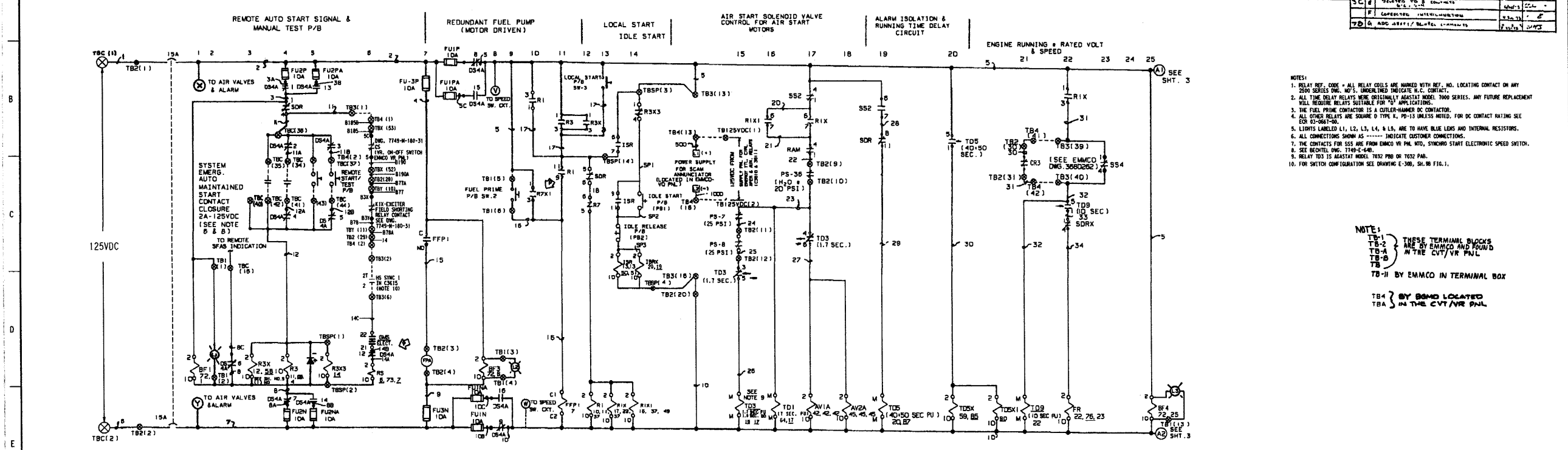
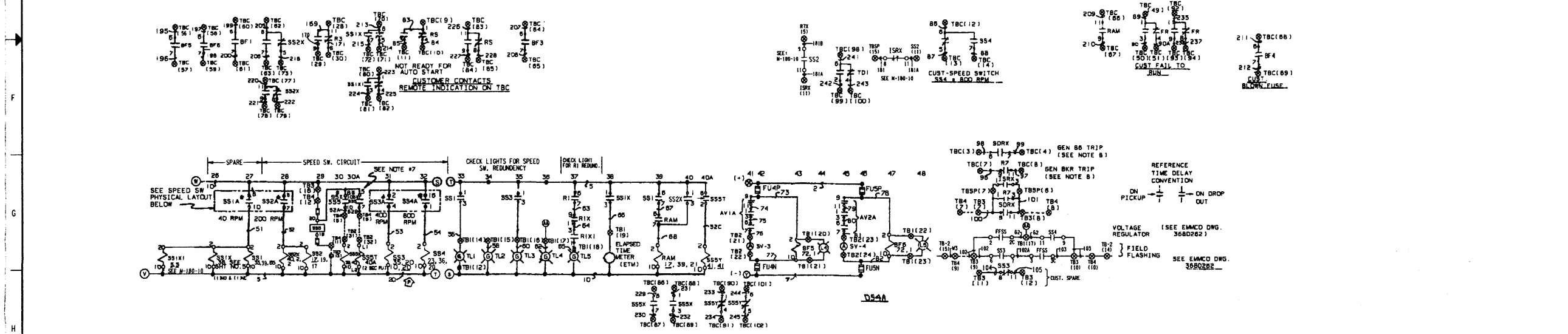


| NO. | DATE     | DESCRIPTION                                | BY      | CHKD |
|-----|----------|--|---------|------|
| 1   | 07-02-12 | ISSUED FOR CONSTRUCTION                    | J. RASO |      |
| 2   | 07-02-12 | REVISED TO ADD CONTACTS FOR REMOTE START   | J. RASO |      |
| 3   | 07-02-12 | REVISED TO ADD CONTACTS FOR LOCAL START    | J. RASO |      |
| 4   | 07-02-12 | REVISED TO ADD CONTACTS FOR AIR START      | J. RASO |      |
| 5   | 07-02-12 | REVISED TO ADD CONTACTS FOR ENGINE RUNNING | J. RASO |      |



- NOTES:
1. RELAY REF. CODE - ALL RELAY COILS ARE MARKED WITH REF. NO. LOCATING CONTACT ON ANY 2500 SERIES DNG. NO'S UNDERLINE INDICATE R.C. CONTACT.
  2. ALL TIME DELAY RELAYS ARE ORIGINALLY AGASTA MODEL 7000 SERIES. ANY FUTURE REPLACEMENT WILL REQUIRE RELAYS SUITABLE FOR 'O' APPLICATIONS.
  3. THE FUEL PRIME CONTACTOR IS A CUTLER-HAMMER DC CONTACTOR.
  4. ALL OTHER RELAYS ARE SQUARE D TYPE R, PD-15 UNLESS NOTED. FOR DC CONTACT RATING SEE ECR 03-0647-00.
  5. LIGHTS LABELED L1, L2, L3, L4, & L5, ARE TO HAVE BLUE LEADS AND INTERNAL RESISTORS.
  6. ALL CONNECTIONS SHOWN AS ----- INDICATE CUSTOMER CONNECTIONS.
  7. THE CONTACTS FOR SSS ARE FROM EMACO VR PAL NO. SYNCHRO START ELECTRONIC SPEED SWITCH.
  8. SEE BENCHING DNG. 1749-E-6-8.
  9. RELAY TDS IS AGASTA MODEL 7032 PDB OR TDS PDB.
  10. FOR SWITCH CONFIGURATION SEE DRAWING E-300, SH. 90 FIG. 1.

NOTE 1:  
 TBC 1  
 TBC 2  
 TBC 3  
 TBC 4  
 TBC 5  
 TBC 6  
 TBC 7  
 TBC 8  
 TBC 9  
 TBC 10  
 TBC 11  
 TBC 12  
 TBC 13  
 TBC 14  
 TBC 15  
 TBC 16  
 TBC 17  
 TBC 18  
 TBC 19  
 TBC 20  
 TBC 21  
 TBC 22  
 TBC 23  
 TBC 24  
 TBC 25  
 TBC 26  
 TBC 27  
 TBC 28  
 TBC 29  
 TBC 30  
 TBC 31  
 TBC 32  
 TBC 33  
 TBC 34  
 TBC 35  
 TBC 36  
 TBC 37  
 TBC 38  
 TBC 39  
 TBC 40  
 TBC 41  
 TBC 42  
 TBC 43  
 TBC 44  
 TBC 45  
 TBC 46  
 TBC 47  
 TBC 48  
 TBC 49  
 TBC 50  
 TBC 51  
 TBC 52  
 TBC 53  
 TBC 54  
 TBC 55  
 TBC 56  
 TBC 57  
 TBC 58  
 TBC 59  
 TBC 60  
 TBC 61  
 TBC 62  
 TBC 63  
 TBC 64  
 TBC 65  
 TBC 66  
 TBC 67  
 TBC 68  
 TBC 69  
 TBC 70  
 TBC 71  
 TBC 72  
 TBC 73  
 TBC 74  
 TBC 75  
 TBC 76  
 TBC 77  
 TBC 78  
 TBC 79  
 TBC 80  
 TBC 81  
 TBC 82  
 TBC 83  
 TBC 84  
 TBC 85  
 TBC 86  
 TBC 87  
 TBC 88  
 TBC 89  
 TBC 90  
 TBC 91  
 TBC 92  
 TBC 93  
 TBC 94  
 TBC 95  
 TBC 96  
 TBC 97  
 TBC 98  
 TBC 99  
 TBC 100



12501-M-1800-13-~~13~~-~~13~~-~~13~~-~~13~~-~~13~~-23  
 SHT 1 OF 2

|  |  |
|--|--|
|  |  |
|  |  |

DISCONNECT SWITCH W/ ROUND SHIELDED WMB G.E. CO. TYPE SB-9 PART No. 16589F2A275SM10P MAINTAINED CONTACTS

DAVIS-BESSE NUCLEAR POWER STATION UNIT NO. 1

SCHEMATIC DIAGRAM FOR EMERGENCY DIESEL GENERATOR 1-1

POWER SYSTEMS DIVISION

B15702501

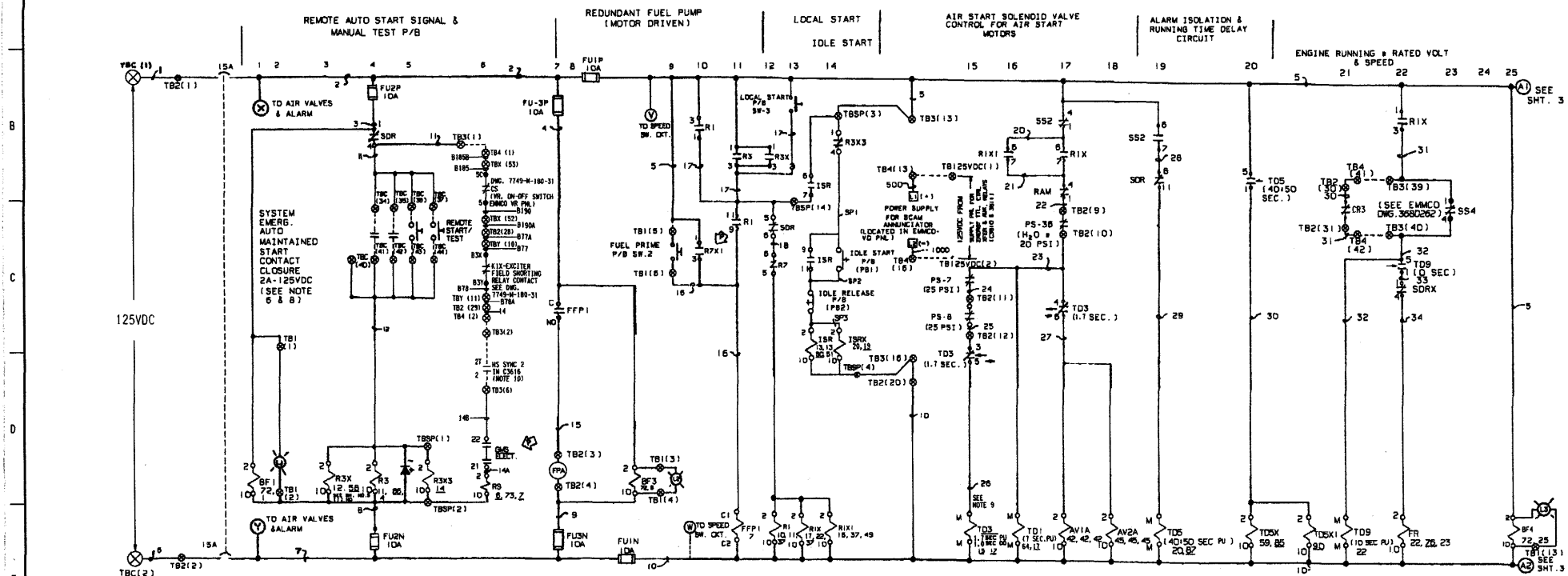
SHT. 2 OF 5

T19

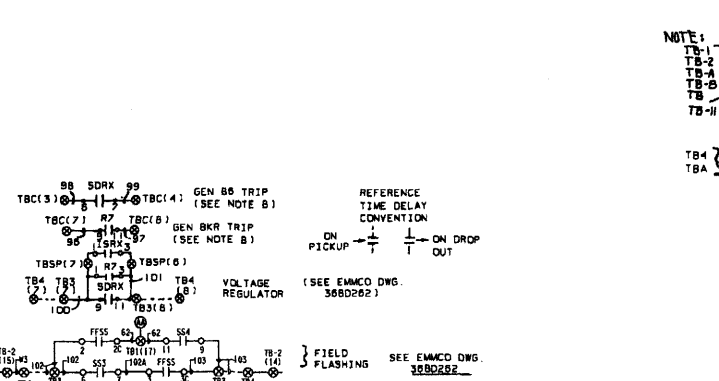
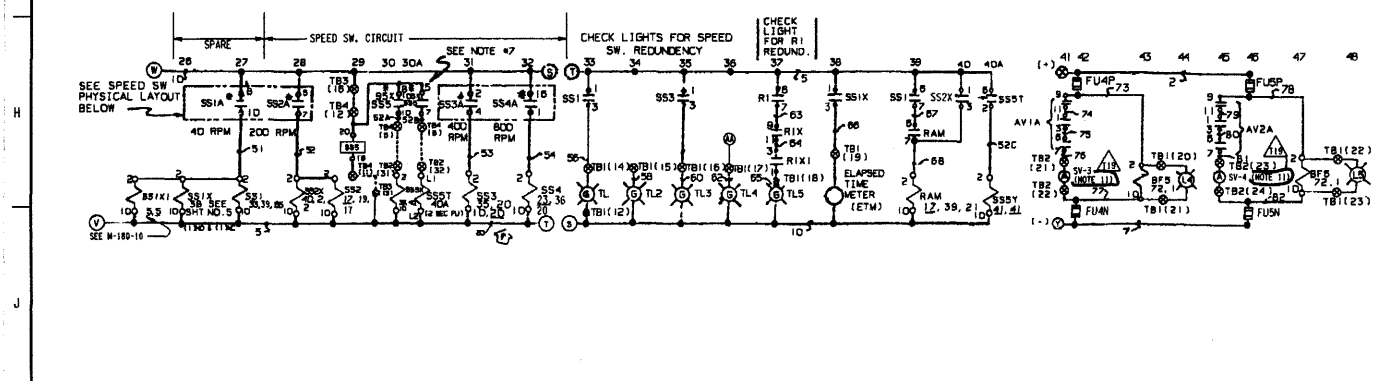
DB: 07-02-12

DFN: J:\RASO\DM180013SH1.DGN\VCIT

| NO. | DESCRIPTION           | DATE | BY  | REVISION |
|-----|-----------------------|------|-----|----------|
| 1   | REVISED FOR REV. 1-72 | 1-72 | ... | ...      |
| 2   | ...                   | ...  | ... | ...      |
| 3   | ...                   | ...  | ... | ...      |
| 4   | ...                   | ...  | ... | ...      |
| 5   | ...                   | ...  | ... | ...      |
| 6   | ...                   | ...  | ... | ...      |
| 7   | ...                   | ...  | ... | ...      |
| 8   | ...                   | ...  | ... | ...      |
| 9   | ...                   | ...  | ... | ...      |
| 10  | ...                   | ...  | ... | ...      |
| 11  | ...                   | ...  | ... | ...      |
| 12  | ...                   | ...  | ... | ...      |
| 13  | ...                   | ...  | ... | ...      |
| 14  | ...                   | ...  | ... | ...      |

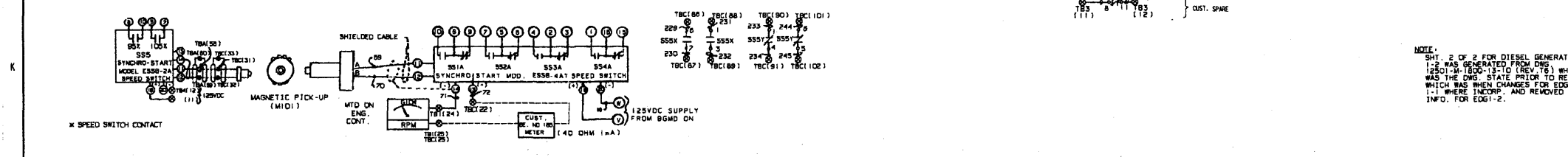


- NOTES:
1. RELAY REF. CODE - ALL RELAY COILS ARE WOUND WITH REF. NO. LOCATING CONTACT ON ANY 2500 SERIES DMC. NO. 5. UNDERLINED INDICATE N.C. CONTACT.
  2. ALL TIME DELAY RELAYS WERE ORIGINALLY AGADIST MODEL 7000 SERIES. ANY FUTURE REPLACEMENT WILL REQUIRE RELAYS SUITABLE FOR APPLICATION.
  3. THE FUEL PRIME CONTACTOR IS A CUTLER-HAMMER DC CONTACTOR.
  4. ALL OTHER RELAYS ARE SQUARE D TYPE K, P-10 UNLESS NOTED. FOR DC CONTACT RATING SEE ECR 63-9667-00.
  5. LIGHTS LABELED L1, L2, L3, L4, & L5, ARE TO HAVE BLUE LENS AND INTERNAL RESISTORS.
  6. ALL CONNECTIONS SHOWN AS - - - - - INDICATE CUSTOMER CONNECTIONS.
  7. THE CONTACTS FOR S55 ARE FROM EMMCO IN PWR. MTD. SYNCHRO START ELECTRONIC SPEED SWITCH.
  8. SEE REWTEL DMC. 7749-E-648.
  9. RELAY TDS IS AGADIST MODEL 7032 PWB OR 7032 PAR.
  10. FOR SWITCH CONFIGURATION SEE DRAWING E-308, SH. 98 FIG. 1.
  11. SY-3 HAS FLOC DB-SV1148A, SY-4 HAS FLOC DB-SV1148B.



NOTE:  
 TBC-1  
 TBC-2  
 TBC-3  
 TBC-4  
 TBC-5  
 TBC-6  
 TBC-7  
 TBC-8  
 TBC-9  
 TBC-10  
 TBC-11  
 TBC-12  
 TBC-13  
 TBC-14  
 TBC-15  
 TBC-16  
 TBC-17  
 TBC-18  
 TBC-19  
 TBC-20  
 TBC-21  
 TBC-22  
 TBC-23  
 TBC-24  
 TBC-25  
 TBC-26  
 TBC-27  
 TBC-28  
 TBC-29  
 TBC-30  
 TBC-31  
 TBC-32  
 TBC-33  
 TBC-34  
 TBC-35  
 TBC-36  
 TBC-37  
 TBC-38  
 TBC-39  
 TBC-40  
 TBC-41  
 TBC-42  
 TBC-43  
 TBC-44  
 TBC-45  
 TBC-46  
 TBC-47  
 TBC-48  
 TBC-49  
 TBC-50  
 TBC-51  
 TBC-52  
 TBC-53  
 TBC-54  
 TBC-55  
 TBC-56  
 TBC-57  
 TBC-58  
 TBC-59  
 TBC-60  
 TBC-61  
 TBC-62  
 TBC-63  
 TBC-64  
 TBC-65  
 TBC-66  
 TBC-67  
 TBC-68  
 TBC-69  
 TBC-70  
 TBC-71  
 TBC-72  
 TBC-73  
 TBC-74  
 TBC-75  
 TBC-76  
 TBC-77  
 TBC-78  
 TBC-79  
 TBC-80  
 TBC-81  
 TBC-82  
 TBC-83  
 TBC-84  
 TBC-85  
 TBC-86  
 TBC-87  
 TBC-88  
 TBC-89  
 TBC-90  
 TBC-91  
 TBC-92  
 TBC-93  
 TBC-94  
 TBC-95  
 TBC-96  
 TBC-97  
 TBC-98  
 TBC-99  
 TBC-100

12501-M-1800-13-~~13~~-~~13~~-~~13~~-~~13~~-~~13~~-~~13~~-23  
 SHT 2 OF 2



|   |                                  |             |             |
|---|----------------------------------|-------------|-------------|
| SCALE NONE  | DESIGNED                         | BY SAS      | DATE 5-6-10 |
| DAVIS-BESSE NUCLEAR POWER STATION<br>UNIT NO. 1                           |                                  |             |             |
| SCHEMATIC DIAGRAM<br>ENGINE CONTROL<br>FOR EMERGENCY DIESEL GENERATOR 1-2 |                                  |             |             |
| POWER SYSTEMS DIVISION  | PROJECT NO.                      | REV.        |             |
| EMMCO   | B15702501                        | SHT. 2 OF 5 | T19         |
| DB: 07-02-12  | DFN: J1/PA509/M180013SH1.DGN/CIT |             |             |

NOTE:  
 SHT. 2 OF 2 FOR DIESEL GENERATOR  
 1-2 WAS GENERATED FROM DWS  
 12501-M-1800-13-10 (REV. 75) WHICH  
 WAS THE DWS. STATE PRIOR TO REV. 72  
 WHICH WAS WHEN CHANGES FOR EDS  
 1-1 WERE INCORP. AND REMOVED  
 INFO. FOR EGG-1-2.