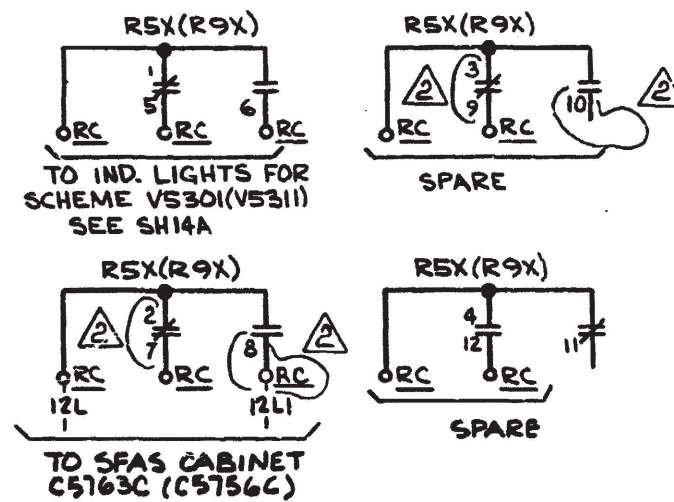
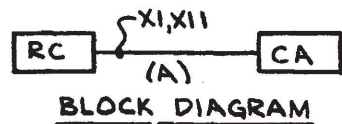
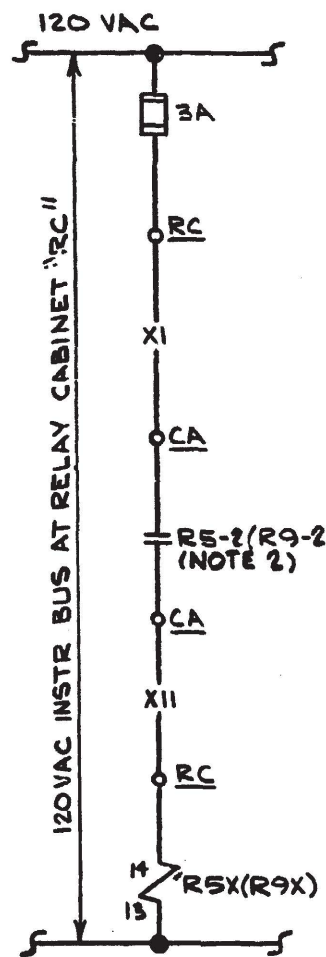


REV. DESCRIPTION	DATE	DR	CHK	SUPV	CHIEF	PROJ	OWNER
2 REVISED AS NOTED	4.30.76	R.W.S.	A.P.C.	S.P.C.			
1 REVISED RELAY CABINET NO'S AS NOTED	6.8.75	X.S.	A.P.C.	S.N.S.			
0 ISSUED FOR CONSTRUCTION	8.26.74	C.W.	A.P.C.	A.M.D.			



- NOTES**
- 1) FOR GENERAL NOTES SEE DWG E-60B INDEX SHEET
  - 2) RS-1(R9-1) CONTACT SHOWN IN SHELF POSITION IT OPENS ON LOW PRESS AT CTRL RM DAMPER PNEUMATIC LINE. SEE HONEYWELL DWG. 347-72008 SH. 10D (F.P.-M-410-222).

SCHEME NO	S.U. NO.	CHANN	EQUIPMENT		DESCRIPTION
			CA	RC	
PR5301	2B	A	C6705	RC3706	AUX BLDG CTRL RM DAMPER AIR PRESS AUX RELAY
PR5311	2B	B	C6705	RC3703	AUX BLDG CTRL RM DAMPER AIR PRESS AUX RELAY

**DAVIS-BESSE NUCLEAR POWER STATION**

THE TOLEDO EDISON COMPANY  
THE CLEVELAND ELECTRIC ILLUMINATING COMPANY

ELEMENTARY WIRING DIAGRAMS  
STA HTG VENTL & CLNG SYS  
CTRL RM AIR HANDLING VLV'S 1 & 2

BECHTEL COMPANY	JOB NO.	DRAWING NO.	REV.
	<b>7749</b>	<b>E-60B SH-14C</b>	<b>2</b>

G-231-D