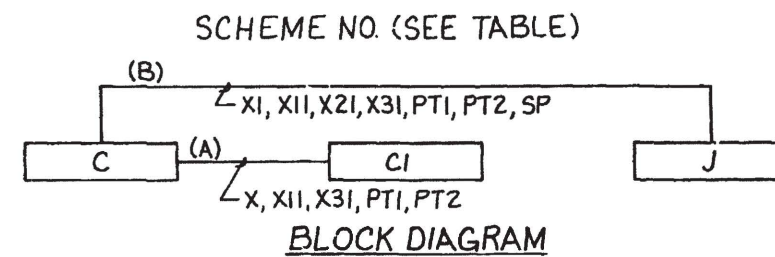
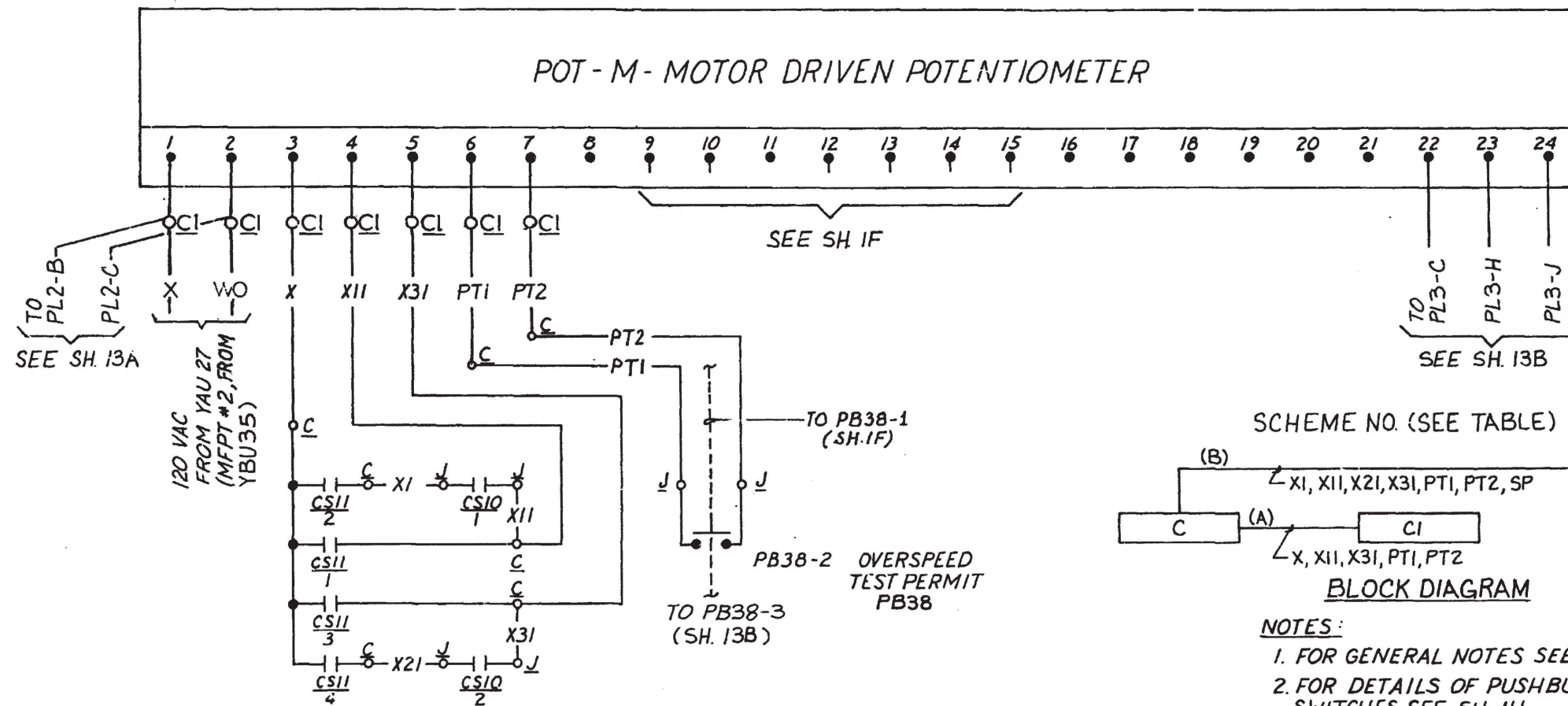


G-231-D	REV.	0	AS-BUILT FOR FC R 81-OTS SUPPL 2.	DESCRIPTION
	DATE	9/10/86	GS	SRD
	CHK	MZ4	SRD	SRD
	OWNR	---	---	---
	CHIEF	---	---	---
	PROJ	---	---	---
	OWNER	---	---	---



- NOTES:
1. FOR GENERAL NOTES SEE E-45B INDEX.
 2. FOR DETAILS OF PUSHBUTTON & CONTROL SWITCHES SEE SH. 1H.
 3. REF. VENDOR DWG. G.E. 134B541BE SH.28 BECHTEL NO. 12501-G-CS-78.

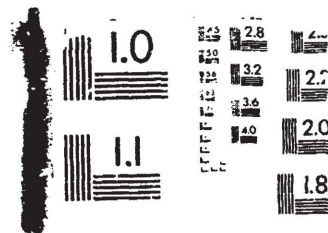
SCHEME NO.	S.U. NO.	CH.	WIRE PREFIX AT MCB	EQUIPMENT			CSII		DESCRIPTION
				C	CI	J	INSTR. NO.	G.E. NO.	
MFPT12	036	A	SCA	C5711	C5757D	JT2401	HS-805D	CS11	MFPT-1 CONTROL
MFPT22	036	B	SCB	C5711	C5757D	JT2301	HS-806D	CS11	MFPT-2 CONTROL

DAVIS-BESSE NUCLEAR POWER STATION
 THE TOLEDO EDISON COMPANY
 THE CLEVELAND ELECTRIC ILLUMINATING COMPANY

ELEMENTARY WIRING DIAGRAM
 AFPT & MFPT CNTRL AUXILIARIES
 MFPT CONTROL

BECHTEL COMPANY	JOB NO.	DRAWING NO.	REV.
	7744	E-45B SH-1G	0

I certify that the image contained on this frame was made in the normal and regular course of business, on the date stated below and that it is an accurate reproduction of the document(s) submitted to Micrographics.
 DATE 9/12/86 OPERATOR B. J. Butler



16 X