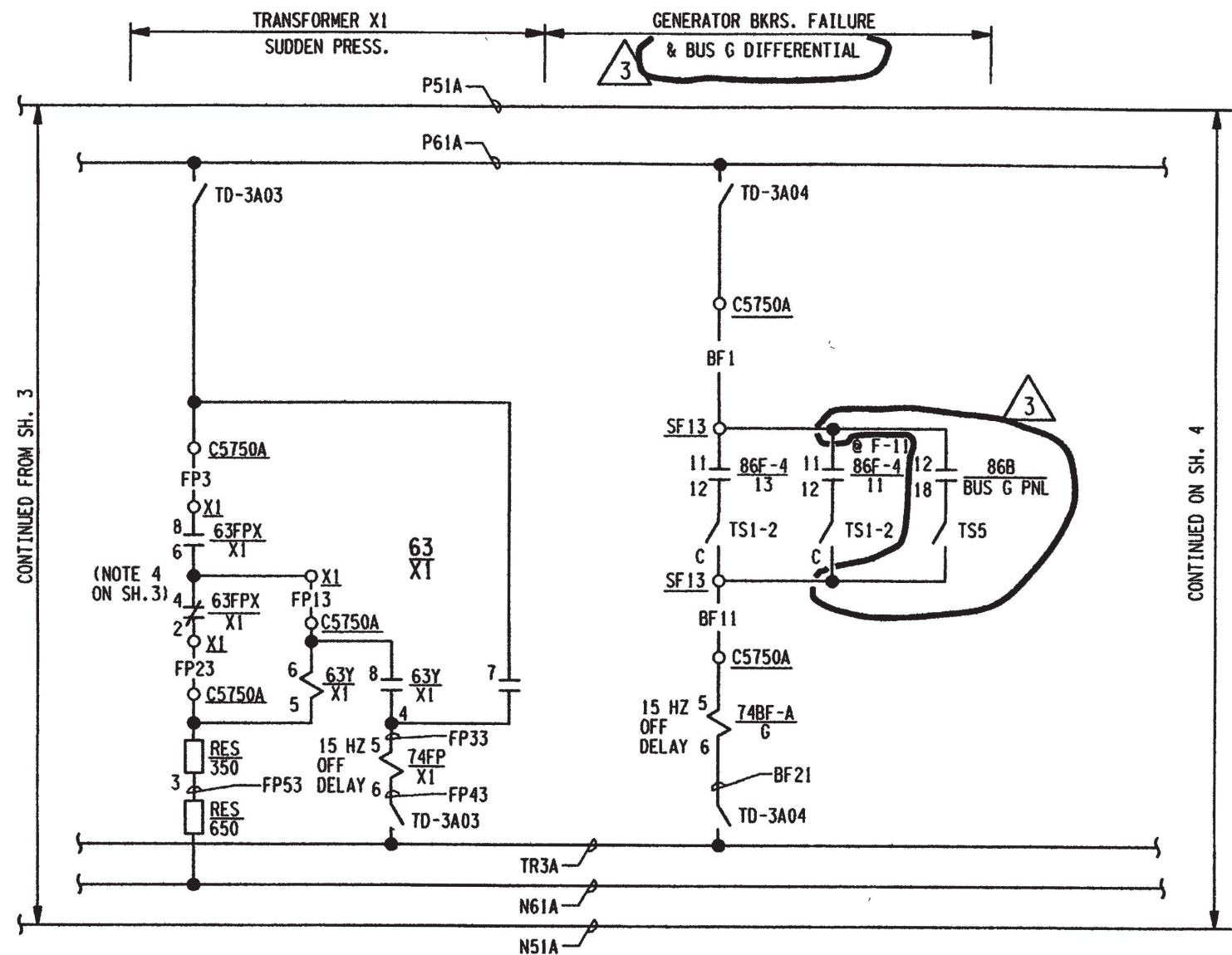
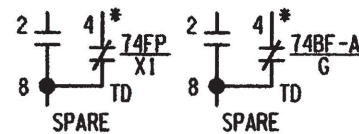


3	7/23/94	INC. DJN 14-0422-001-001 REV.00	BY	ENGR.	GEN. SUPV.
2	7/21/00	INC. DCN E-31B-151 PER MOD 90-0002-01 & DCN E-31B-169 PER DDR 00-1597	CH'K	ENGR.	ENGR. SUPV.
1	4/10/93	INC. DCN'S E-31B-118 PER DDR 93-0875 & E-31B-116 PER MOD 90-002 SUP. 0	INITIALS ON FILE	INITIALS ON FILE	INITIALS ON FILE
0	5/6/92	GEN. UPDATE REDRAWN ON CADD TO IMPROVE LEGIBILITY	INITIALS ON FILE	INITIALS ON FILE	INITIALS ON FILE
NO.	DATE	REVISIONS			



SCHEME NO. GX01 (CONTINUED) - CHANNEL A  
START-UP SYS. NO. 087/098



NOTES:

1. FOR GENERAL NOTES & DRAWING LOCATION DESIGNATIONS SEE DRAWING INDEX E-31B.
2. REFERENCE SHEETS FOR CONTACT ASSIGNMENTS:  
74FP/XI 3-7 SHEET 15  
74BF-A/G 3-7 SHEET 3
3. \*4 NOT USED - SEE GE INSTRUCTIONS GEI 101906.

THIS DRAWING WAS REDRAWN ON CADD & IN CONJUNCTION WITH DWG. E-31B SH.3 SUPERSEDES REV. 8.

GENERATOR - TRANSFORMER  
A RELAY CKTS (CONTINUED)

SCALE NONE	DESIGNED TG	DRAWN JFS	DATE 03-23-92
DAVIS-BESSE NUCLEAR POWER STATION UNIT NO. 1 THE TOLEDO EDISON COMPANY			
ELEMENTARY WIRING DIAGRAMS GENERATOR AND TRANSFORMER PROTECTION TRIPPING AND LOCK-OUT RELAY CKTS			
DRAWING NO.		REV.	
E-31B SH.3A		3	