

REF DESIG	TYPE	DEVICE TYPE
U1, U2, U4, U5 U7, U8, U13	333	HEX INVERTER GATE
U5, U6, U9	324	QUAD 2 INPUT NAND GATE
U11	301	DUAL 5 INPUT PWR NAND GATE
U10	332	HEX INVERTER GATE
U12, U14	333	HEX INVERTER GATE

REVISIONS				
ZONE/LTR	DESCRIPTION	DATE	APPROVED	
A	REV. ON C/N 4 U1	11-18-72	K	
B	FINISHING, ADDED ITEM 11, P.I.D. TEST, SW. VAL. ALL IND. CAP. POLARITY, P.I.D. 5, W.A. 1	1-11-73	K	
C	KAN 18 180 C/WAS IN 1805, DEL. ITEM 11, QTY ITEM 3, WAS A DEL. COMM. V. 13-50W SCHEDULE 40 ADD. ITEMS U1, U3	1/11/73	K	
D	1/11/73 U1, U2, U5, U7, U8, U13 WAS TYPE 324 INPUT NAND GATE, U12, U14 WAS U12-11 TO WAS 11, U13 WAS 12 TO WAS 12	1-11-73	K	
E	C/N 5240-U13 WAS HEX INVERTER TYPE 332	7-27-73	KBC	
F	C/N 5395-ADDED SECT. A-A ITEM 32	6/1/80	DW	
G	C/N 5384 SEE S/A FOR DETAILS	2-2-83	FJM	
H	C/N 5384 ROTATED Q10, Q11 & Q12, 180°	3-1-83	FJM	
J	C/N 5084 REVISED WIRE LIST SEE C/N FOR DETAILS	5-12-83	FJM	
K	C/N 5243 ADDED NOTE 5, ADDED ITEM 16 OR ITEMS 11, 26, 49. SEE NOTE 5	7/1/83	EW	
L	C/N 5624 REMOVED WIRE LIST, ADDED Q7, Q8, Q9 INFORMATION VIEWS, REV'D NOTES & CHANGED LOCATION, MOVED DEVICE REF. CHART	9-29-83	KR	

THE FOLLOWING COMPANY CLEAR-FACILITY ENGINEERING DOCUMENT REVIEW WORK MAY PROCEED. REPAIR AND REPAIR WORK MAY BE PROCEED SUBJECT TO INCORPORATION OF CHANGES INDICATED. REPAIR AND REPAIR WORK MAY NOT PROCEED. WORK MAY PROCEED ON THE DOCUMENT DOES NOT RELIEVE SUPPLIER FROM LIABILITY WITH CONTRACT SPECIFICATION.

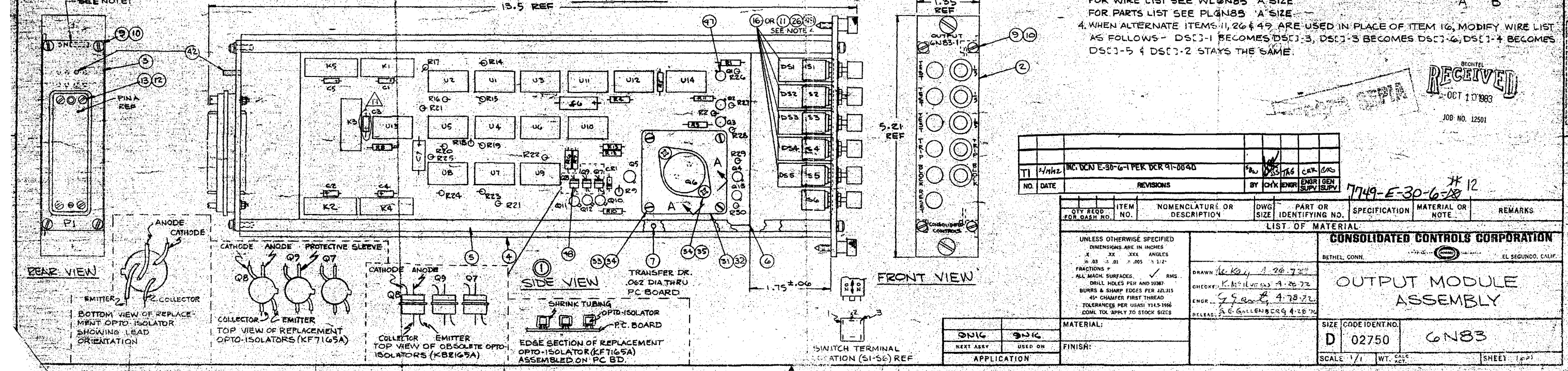
RECEIVED
SEP 5 1986
DOCUMENT CONTROL

BECHTEL COMPANY JOB NO. 7749
SUPPLIER DOCUMENT REVIEW SHEET

- NOTES:
- MARK APPLICABLE SERIAL NO WITH .09 HIGH-STD GOTHIC-CHARACTERS, USE BLACK EPOXY INK.
 - OPTIONAL TERMINAL WIRING MAY BE EITHER 'A' OR 'B' METHOD
 - FOR QUALITY CONFORMANCE PROCEDURE SEE KYMB15/3 FOR WIRE LIST SEE WLON83 'A' SIZE FOR PARTS LIST SEE PLAN85 'A' SIZE
 - WHEN ALTERNATE ITEMS 11, 26 & 49 ARE USED IN PLACE OF ITEM 16, MODIFY WIRE LIST AS FOLLOWS - DSC1-1 BECOMES DSC1-3, DSC1-3 BECOMES DSC1-6, DSC1-4 BECOMES DSC1-5 & DSC1-2 STAYS THE SAME.

ALL CAPACITORS ARE 1.0µF 50V UNLESS SPECIFIED OTHERWISE.
ALL RESISTORS ARE ±1% 1/4 W UNLESS SPECIFIED OTHERWISE.

SCHMATIC



NO.	DATE	REVISIONS	BY	CHKD	ENGR	ENGR SUPV	ENGR SUPV
1	11/18/72	INC. DCN E-30-6-1 PER DCR 91-0040					

QTY REQD FOR DASH NO.	ITEM NO.	NOMENCLATURE OR DESCRIPTION	DWG SIZE	PART OR IDENTIFYING NO.	SPECIFICATION	MATERIAL OR NOTE	REMARKS
LIST OF MATERIAL							
UNLESS OTHERWISE SPECIFIED DIMENSIONS ARE IN INCHES X XX XXX ANGLES ±.03 ±.01 ±.005 ±.12° FRACTIONS ALL MACH. SURFACES, ✓ RMS DRILL HOLES PER AND 10387 BURRS & SHARP EDGES PER 221315 45° CHAMFER FIRST THREAD TOLERANCES PER UNSM 1145-5166 COML. TOL. APPLY TO STOCK SIZES							
CONSOLIDATED CONTROLS CORPORATION BETHEL, CONN. EL SEGUNDO, CALIF.							
DRAWN: K. K. 11/18/72 CHECKED: K. M. 11/18/72 ENGR: S. S. 11/18/72 RELEASED: S. E. G. 11/18/72							
MATERIAL: FINISH: APPLICATION:							
SIZE CODE IDENT. NO. D 02750 6N83							
SCALE 1/1 WT. G/ACT. SHEET 1 of 1							

RECEIVED
OCT 17 1983
JOB NO. 12501

7749-E-30-6-12