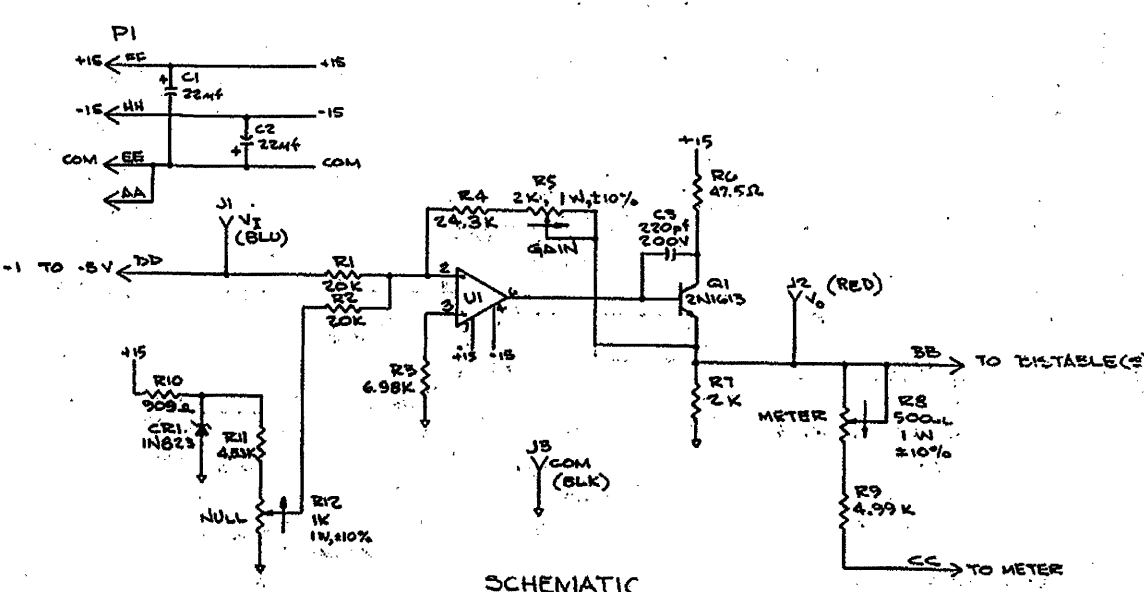


8 7 6 5 4 3 2 1

| REVISIONS |     |  |               |
|-----------|-----|--|---------------|
| ZONE      | LTR | DESCRIPTION  | DATE APPROVED |
| -         | -   | REL ON CIRCUIT   |               |
| A         |     | DEL ITEM 11, 12, 13, 14, 15, 16, 17, 18, 19, 20, 21, 22, 23, 24, 25, 26, 27, 28, 29, 30, 31, 32, 33, 34, 35, 36, 37, 38, 39, 40, 41, 42, 43, 44, 45, 46, 47, 48, 49, 50, 51, 52, 53, 54, 55, 56, 57, 58, 59, 60, 61, 62, 63, 64, 65, 66, 67, 68, 69, 70, 71, 72, 73, 74, 75, 76, 77, 78, 79, 80, 81, 82, 83, 84, 85, 86, 87, 88, 89, 90, 91, 92, 93, 94, 95, 96, 97, 98, 99, 100 | 7/10/76       |
| B         |     | DEL ITEM 11, 12, 13, 14, 15, 16, 17, 18, 19, 20, 21, 22, 23, 24, 25, 26, 27, 28, 29, 30, 31, 32, 33, 34, 35, 36, 37, 38, 39, 40, 41, 42, 43, 44, 45, 46, 47, 48, 49, 50, 51, 52, 53, 54, 55, 56, 57, 58, 59, 60, 61, 62, 63, 64, 65, 66, 67, 68, 69, 70, 71, 72, 73, 74, 75, 76, 77, 78, 79, 80, 81, 82, 83, 84, 85, 86, 87, 88, 89, 90, 91, 92, 93, 94, 95, 96, 97, 98, 99, 100 | 7/10/76       |
| C         |     | DEL ITEM 11, 12, 13, 14, 15, 16, 17, 18, 19, 20, 21, 22, 23, 24, 25, 26, 27, 28, 29, 30, 31, 32, 33, 34, 35, 36, 37, 38, 39, 40, 41, 42, 43, 44, 45, 46, 47, 48, 49, 50, 51, 52, 53, 54, 55, 56, 57, 58, 59, 60, 61, 62, 63, 64, 65, 66, 67, 68, 69, 70, 71, 72, 73, 74, 75, 76, 77, 78, 79, 80, 81, 82, 83, 84, 85, 86, 87, 88, 89, 90, 91, 92, 93, 94, 95, 96, 97, 98, 99, 100 | 7/10/76       |
| D         |     | DEL ITEM 11, 12, 13, 14, 15, 16, 17, 18, 19, 20, 21, 22, 23, 24, 25, 26, 27, 28, 29, 30, 31, 32, 33, 34, 35, 36, 37, 38, 39, 40, 41, 42, 43, 44, 45, 46, 47, 48, 49, 50, 51, 52, 53, 54, 55, 56, 57, 58, 59, 60, 61, 62, 63, 64, 65, 66, 67, 68, 69, 70, 71, 72, 73, 74, 75, 76, 77, 78, 79, 80, 81, 82, 83, 84, 85, 86, 87, 88, 89, 90, 91, 92, 93, 94, 95, 96, 97, 98, 99, 100 | 7/10/76       |

WIRE LIST (SEE NOTE 3)

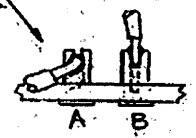
| WIRE # | FROM (PC BOARD) | TO      | COLOR           |
|--------|-----------------|---------|-----------------|
| 1      | PI - HH         | PI - HH | YEL             |
| 2      | EE              | EE      | BRN             |
| 3      | EE              | EE      | BLU             |
| 4      | DD              | DD      | VIO             |
| 5      | CC              | CC      | WHT/GRN         |
| 6      | BB              | BB      | WHT/RED         |
| 7      | AA              | AA      | WHT/BRN         |
| 8      | J3              | J3      | BLK             |
| 9      | J2              | J2      | RED             |
| 10     | J1              | J1      | WHT/BLU         |
| 11     | R12 - A         | R12     | GRN (SELF LEAD) |
| 12     | R12 - B         | R12     | YEL             |
| 13     | R12 - C         | R12     | RED             |
| 14     | R12 - D         | R12     | GRN             |
| 15     | R12 - E         | R12     | YEL             |
| 16     | R12 - F         | R12     | RED             |
| 17     | R12 - G         | R12     | GRN             |
| 18     | R12 - H         | R12     | YEL             |
| 19     | R12 - I         | R12     | RED             |



SCHMATIC

- NOTES:
- UNLESS NOTED OTHERWISE RESISTORS ARE ±1%, 1/4 W.
  - UNLESS NOTED OTHERWISE CAPACITORS ARE ±10%, 20V.
  - A MANUFACTURING OPTION MAY BE USED TO WIRE LEADS PROVIDING THAT THE WIRE IS WHITE.
  - OPTIONAL TERMINAL WIRING MAY BE EITHER 'A' OR 'B' METHOD.
  - MARK APPLICABLE SERIAL NO., OR HIGH GOTHIC CHARACTERS, USE BLACK EPOXY INK.
  - FOR QUALITY CONFORMANCE PROCEDURE SEE CCC DNG 1/1/56.

| REF. DESIG. | TYPE  | DEVICE TYPE |
|-------------|-------|-------------|
| U1          | 44741 | AMPLIFIER   |



REC'D S.P.A.

VENDOR'S DRAWING REVIEW

Approved: Mfg. may proceed.

Approved: Submit final dwg. - Mfg. may proceed.

Approved except as noted. Make changes and submit final dwg. - Mfg. may proceed as approved.

Not approved - Correct and resubmit.

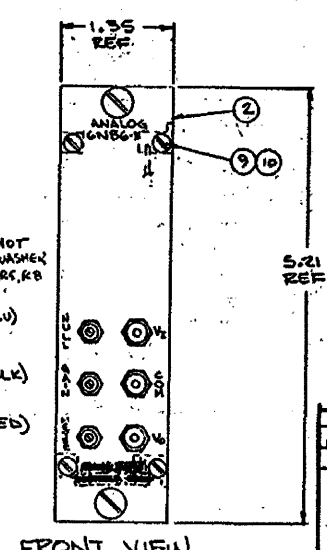
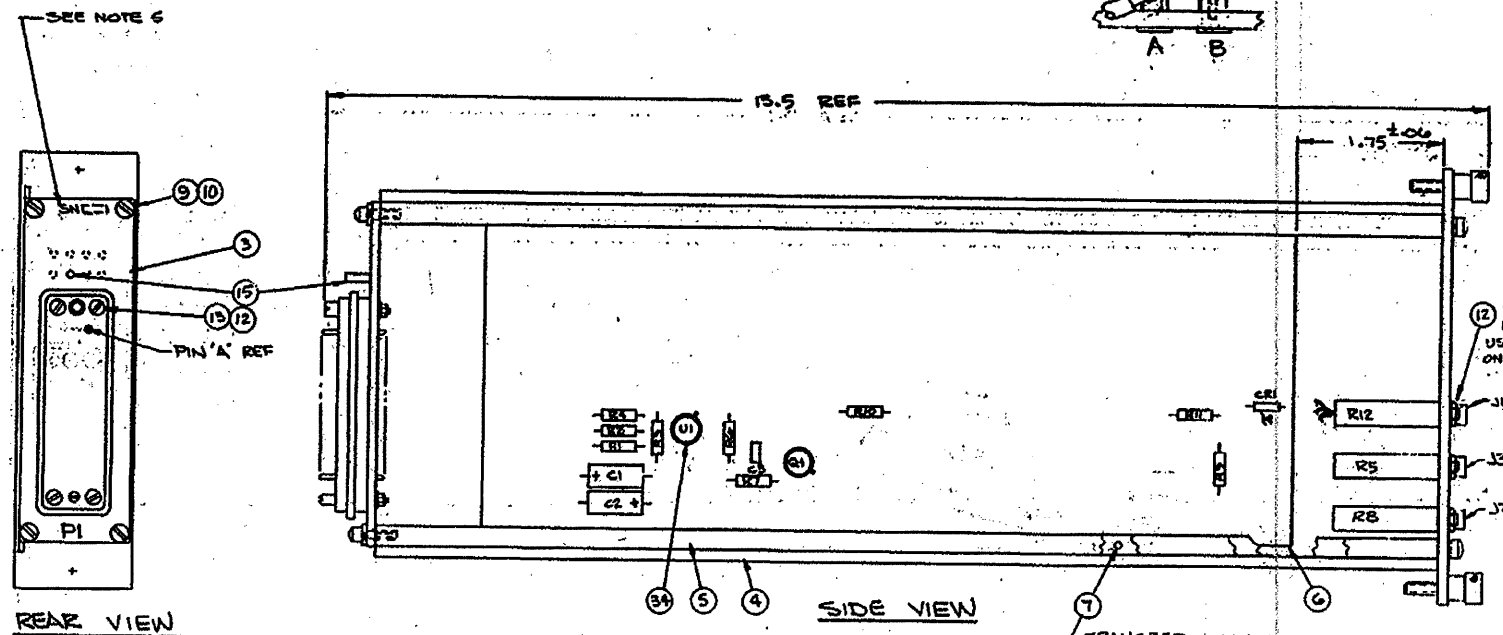
Review not required. - Mfg. may proceed.

Approval of this drawing does not relieve supplier from full compliance with contract or purchase order requirements. Status 1, 2 or 3 approval required prior to shipment of material.

By: *[Signature]* Date: 11/8/77

JOB NO: 7749

BECHTEL COMPANY  
POWER & INDUSTRIAL DIVISION  
P.O. BOX 607 GAITHERSBURG, MD.



7749-E-30-5-6

| QTY REQ FOR BOM NO.  | ITEM NO. | NOMENCLATURE OR DESCRIPTION | DWG SIZE | PART OR IDENTIFYING NO.   | SPECIFICATION | MATERIAL OR NOTE | REMARKS |
|--|----------|-----------------------------|----------|---|---------------|------------------|---------|
| LIST OF MATERIAL   |          |                             |          |   |               |                  |         |
| UNLESS OTHERWISE SPECIFIED DIMENSIONS ARE IN INCHES<br>FRACTIONS = ALL MACH SURFACES DRILL HOLES PER ANSI B91.3<br>CHAMFER FIRST THREAD TOLERANCES PER UNAS 13A-194 CONN. TOL APPLY TO STOCK SIZES |          |                             |          |   |               |                  |         |
| DRAWN: <i>[Signature]</i> 4-25-72<br>CHECKED: <i>[Signature]</i> 7-28-72<br>ENGR: <i>[Signature]</i> 4-18-72<br>RELEASED: <i>[Signature]</i> 4-23-72   |          |                             |          | CONSOLIDATED CONTROLS CORPORATION<br>BETHEL, CONN.<br>EL SEGUNDO, CALIF.      |               |                  |         |
| MATERIAL: 0N16<br>FINISH: 0N16   |          |                             |          | ANALOG MODULE ASSEMBLY  |               |                  |         |
| APPLICATION: 0N16<br>NEXT ASSY: 0N16<br>USED ON:   |          |                             |          | SIZE CODE IDENT NO. D 02750<br>SCALE: 1:1<br>WT. CALC. 0.000<br>SHEET: 1 of 1 |               |                  |         |