

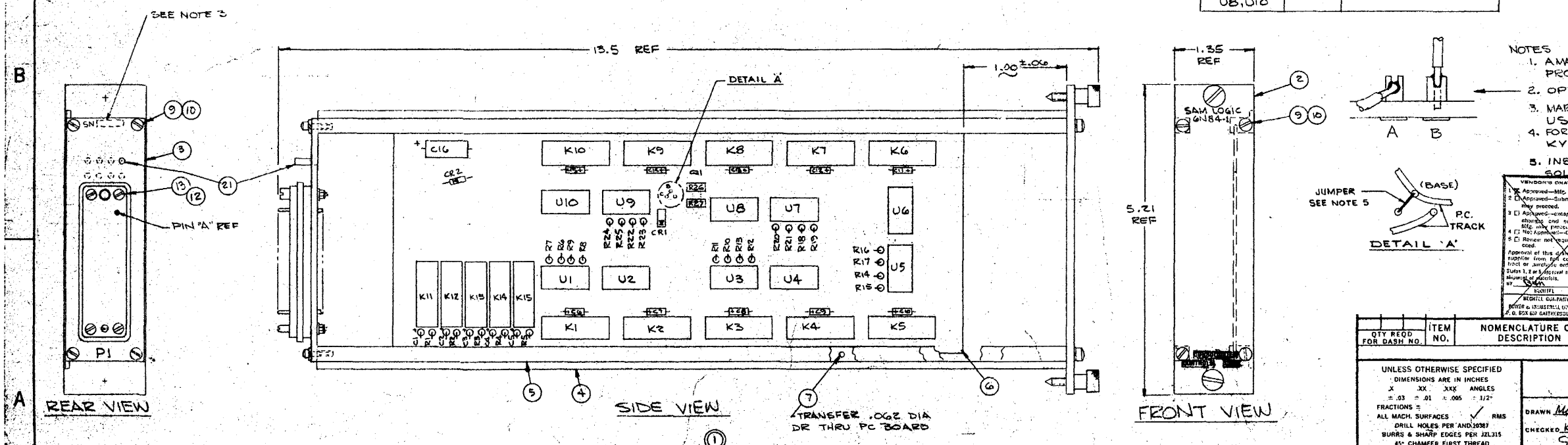
ALL RESISTORS ARE 10K ± 1%, 1/4W UNLESS NOTED OTHERWISE.
ALL CAPACITORS ARE 1.0µF ± 50V UNLESS NOTED OTHERWISE.

SCHEMATIC

REF DESIG	TYPE	DEVICE TYPE
U1, U3, U5, U7, U9	333	HEX INVERTOR GATE
U2, U4, U6, U8, U10	326	INPUT NAND GATE

REVISIONS				
ZONE	LTR	DESCRIPTION	DATE APPROVED	
-	-	REL ON 4/11/72	4-28-72	
A	C/N 4714	DELETED C17 SWAPPED REF DESIG	7/20/72	
B	C/N 4829	DELETED ITEM 11, 12, 13, 14, 15, 16, 17, 18, 19, 20, 21, 22, 23, 24, 25, 26, 27, 28, 29, 30, 31, 32, 33, 34, 35, 36, 37, 38, 39, 40, 41, 42, 43, 44, 45, 46, 47, 48, 49, 50, 51, 52, 53, 54, 55, 56, 57, 58, 59, 60, 61, 62, 63, 64, 65, 66, 67, 68, 69, 70, 71, 72, 73, 74, 75, 76, 77, 78, 79, 80, 81, 82, 83, 84, 85, 86, 87, 88, 89, 90, 91, 92, 93, 94, 95, 96, 97, 98, 99, 100, 101, 102, 103, 104, 105, 106, 107, 108, 109, 110, 111, 112, 113, 114, 115, 116, 117, 118, 119, 120, 121, 122, 123, 124, 125, 126, 127, 128, 129, 130, 131, 132, 133, 134, 135, 136, 137, 138, 139, 140, 141, 142, 143, 144, 145, 146, 147, 148, 149, 150, 151, 152, 153, 154, 155, 156, 157, 158, 159, 160, 161, 162, 163, 164, 165, 166, 167, 168, 169, 170, 171, 172, 173, 174, 175, 176, 177, 178, 179, 180, 181, 182, 183, 184, 185, 186, 187, 188, 189, 190, 191, 192, 193, 194, 195, 196, 197, 198, 199, 200, 201, 202, 203, 204, 205, 206, 207, 208, 209, 210, 211, 212, 213, 214, 215, 216, 217, 218, 219, 220, 221, 222, 223, 224, 225, 226, 227, 228, 229, 230, 231, 232, 233, 234, 235, 236, 237, 238, 239, 240, 241, 242, 243, 244, 245, 246, 247, 248, 249, 250, 251, 252, 253, 254, 255, 256, 257, 258, 259, 260, 261, 262, 263, 264, 265, 266, 267, 268, 269, 270, 271, 272, 273, 274, 275, 276, 277, 278, 279, 280, 281, 282, 283, 284, 285, 286, 287, 288, 289, 290, 291, 292, 293, 294, 295, 296, 297, 298, 299, 300, 301, 302, 303, 304, 305, 306, 307, 308, 309, 310, 311, 312, 313, 314, 315, 316, 317, 318, 319, 320, 321, 322, 323, 324, 325, 326, 327, 328, 329, 330, 331, 332, 333, 334, 335, 336, 337, 338, 339, 340, 341, 342, 343, 344, 345, 346, 347, 348, 349, 350, 351, 352, 353, 354, 355, 356, 357, 358, 359, 360, 361, 362, 363, 364, 365, 366, 367, 368, 369, 370, 371, 372, 373, 374, 375, 376, 377, 378, 379, 380, 381, 382, 383, 384, 385, 386, 387, 388, 389, 390, 391, 392, 393, 394, 395, 396, 397, 398, 399, 400, 401, 402, 403, 404, 405, 406, 407, 408, 409, 410, 411, 412, 413, 414, 415, 416, 417, 418, 419, 420, 421, 422, 423, 424, 425, 426, 427, 428, 429, 430, 431, 432, 433, 434, 435, 436, 437, 438, 439, 440, 441, 442, 443, 444, 445, 446, 447, 448, 449, 450, 451, 452, 453, 454, 455, 456, 457, 458, 459, 460, 461, 462, 463, 464, 465, 466, 467, 468, 469, 470, 471, 472, 473, 474, 475, 476, 477, 478, 479, 480, 481, 482, 483, 484, 485, 486, 487, 488, 489, 490, 491, 492, 493, 494, 495, 496, 497, 498, 499, 500, 501, 502, 503, 504, 505, 506, 507, 508, 509, 510, 511, 512, 513, 514, 515, 516, 517, 518, 519, 520, 521, 522, 523, 524, 525, 526, 527, 528, 529, 530, 531, 532, 533, 534, 535, 536, 537, 538, 539, 540, 541, 542, 543, 544, 545, 546, 547, 548, 549, 550, 551, 552, 553, 554, 555, 556, 557, 558, 559, 560, 561, 562, 563, 564, 565, 566, 567, 568, 569, 570, 571, 572, 573, 574, 575, 576, 577, 578, 579, 580, 581, 582, 583, 584, 585, 586, 587, 588, 589, 590, 591, 592, 593, 594, 595, 596, 597, 598, 599, 600, 601, 602, 603, 604, 605, 606, 607, 608, 609, 610, 611, 612, 613, 614, 615, 616, 617, 618, 619, 620, 621, 622, 623, 624, 625, 626, 627, 628, 629, 630, 631, 632, 633, 634, 635, 636, 637, 638, 639, 640, 641, 642, 643, 644, 645, 646, 647, 648, 649, 650, 651, 652, 653, 654, 655, 656, 657, 658, 659, 660, 661, 662, 663, 664, 665, 666, 667, 668, 669, 670, 671, 672, 673, 674, 675, 676, 677, 678, 679, 680, 681, 682, 683, 684, 685, 686, 687, 688, 689, 690, 691, 692, 693, 694, 695, 696, 697, 698, 699, 700, 701, 702, 703, 704, 705, 706, 707, 708, 709, 710, 711, 712, 713, 714, 715, 716, 717, 718, 719, 720, 721, 722, 723, 724, 725, 726, 727, 728, 729, 730, 731, 732, 733, 734, 735, 736, 737, 738, 739, 740, 741, 742, 743, 744, 745, 746, 747, 748, 749, 750, 751, 752, 753, 754, 755, 756, 757, 758, 759, 760, 761, 762, 763, 764, 765, 766, 767, 768, 769, 770, 771, 772, 773, 774, 775, 776, 777, 778, 779, 780, 781, 782, 783, 784, 785, 786, 787, 788, 789, 790, 791, 792, 793, 794, 795, 796, 797, 798, 799, 800, 801, 802, 803, 804, 805, 806, 807, 808, 809, 810, 811, 812, 813, 814, 815, 816, 817, 818, 819, 820, 821, 822, 823, 824, 825, 826, 827, 828, 829, 830, 831, 832, 833, 834, 835, 836, 837, 838, 839, 840, 841, 842, 843, 844, 845, 846, 847, 848, 849, 850, 851, 852, 853, 854, 855, 856, 857, 858, 859, 860, 861, 862, 863, 864, 865, 866, 867, 868, 869, 870, 871, 872, 873, 874, 875, 876, 877, 878, 879, 880, 881, 882, 883, 884, 885, 886, 887, 888, 889, 890, 891, 892, 893, 894, 895, 896, 897, 898, 899, 900, 901, 902, 903, 904, 905, 906, 907, 908, 909, 910, 911, 912, 913, 914, 915, 916, 917, 918, 919, 920, 921, 922, 923, 924, 925, 926, 927, 928, 929, 930, 931, 932, 933, 934, 935, 936, 937, 938, 939, 940, 941, 942, 943, 944, 945, 946, 947, 948, 949, 950, 951, 952, 953, 954, 955, 956, 957, 958, 959, 960, 961, 962, 963, 964, 965, 966, 967, 968, 969, 970, 971, 972, 973, 974, 975, 976, 977, 978, 979, 980, 981, 982, 983, 984, 985, 986, 987, 988, 989, 990, 991, 992, 993, 994, 995, 996, 997, 998, 999, 1000	7/20/72	
C	C/N 4829	REVISOR SCH 1 WIRE LIST FOR WIRE 26, 27, 29, 30, WAS HISTORY 26	7/20/72	
D	C/N 4825	REVISOR TO ORIGINAL CONN. (REV. C INVALIDATED)	8/1/73	
E	C/N 4831	ADDED CR-2	4/16/74	
F	C/N 5102	DEL'D Q1 FROM ZONE BC; ADDED JUMPER FROM R26 TO R27, ZONE AA, DEL'D Q1 FROM PICTORIAL ZONE 7C, ZONE HH; ZONE CC, U WAS FF, ZONE 4C, FF WAS W; ZONE 3C, HH WAS Z; WIRE LIST CORRECTED	8/1/77	

WIRE LIST			
WIRE #	FROM (PC BOARD)	TO (CONNECTIVE)	COLOR
1	P1-3	P1-3	WHT/BLK
2	P1-4	P1-4	WHT/RED
3	P1-5	P1-5	WHT/ORN
4	P1-6	P1-6	WHT/YEL
5	P1-7	P1-7	WHT/GRN
6	BB	BB	WHT/BLU
7	BB	BB	WHT/VIO
8	BB	BB	WHT/GY
9	BB	BB	WHT/BRN
10	BB	BB	YEL/BLK
11	DD	DD	YEL/RED
12	DD	DD	YEL/ORN
13	DD	DD	YEL/BLU
14	DD	DD	YEL/VIO
15	DD	DD	YEL/BRN
16	CC	CC	WHT/BLK/RED
17	CC	CC	WHT/BLK/ORN
18	CC	CC	WHT/BLK/YEL
19	CC	CC	WHT/BLK/GRN
20	CC	CC	WHT/BLK/BLU
21	AA	AA	WHT/BLK/VIO
22	AA	AA	WHT/BLK/GY
23	AA	AA	WHT/BLK/BRN
24	AA	AA	WHT/RED/ORN
25	AA	AA	WHT/RED/YEL
26	EE	HH	WHT/RED/GRN
27	WW	FF	WHT/RED/BLU
28	EE	EE	WHT/RED/VIO
29	FF	WW	WHT/RED/GY
30	HH	ZZ	WHT/BRN/RED
31	FF	FF	BLU
32	SS	BB	ORN
33	SS	BB	BRN
34	UU	UU	WHT/GRN/GY
35	TT	TT	WHT



- NOTES
1. AMUFACTURING OPTION MAY BE USED TO WIRE LEADS PROVIDING THE WIRE IS WHITE.
 2. OPTIONAL TERMINAL WIRING MAY BE EITHER "A" OR "B" METHOD
 3. MARK APPLICABLE SERIAL NO. .003 HIGH GOTHIC CHARACTERS, USE BLACK EPOXY INK.
 4. FOR QUALITY CONFORMANCE PROCEDURE SEE CCC DWG KYM 315/4.
 5. INSTALL JUMPER, USING MFGG-11 WIRE AND MEEGG-10 SOLDER, PER DETAIL A.

THE ATI SIGNAL HAS BEEN DISABLED AND IS NOT FUNCTIONAL (P.C. FIDCR 91-0100).

RECORD SEP14

7749-E-30-4-89

QTY REQD FOR DASH NO.	ITEM NO.	NOMENCLATURE OR DESCRIPTION	DWG SIZE	PART OR IDENTIFYING NO.	SPECIFICATION	MATERIAL OR NOTE	REMARKS
LIST OF MATERIAL							
CONSOLIDATED CONTROLS CORPORATION							
BETHEL, CONN. EL SEGUNDO, CALIF.							
DRAWN: <i>McKay</i> 4-27-72							
CHECKED: <i>K.F. H. 9-26-72</i>							
ENGR: <i>996 4-28-77</i>							
RELEASED: <i>G.E. GOLDBERG 4-28-77</i>							
MATERIAL:				SIZE CODE IDENT NO.			
FINISH:				D 02750 GN84			
APPLICATION:				SCALE 1/1 WT. ACT SHEET 1			

NO.	DATE	REVISIONS	BY	CHK	ENGR	GEN	SUPV	SUPV
T/1	9/3/72	INC. DCN E-30-4-1 PER DCR 91-0100						