

AEC DISTRIBUTION FOR PART 50 DOCKET MATERIAL
(TEMPORARY FORM)

CONTROL NO: 714

FILE

FROM: Niagra Mohawk Power Corporation Lycoming, New York 13093 P. A. Burt	DATE OF DOC: 01-26-73	DATE REC'D 01-30-73	LTR X	MEMO	RPT	OTHER
TO: Donald J. Skovholt	ORIG 1	CC	OTHER	SENT AEC PDR X SENT LOCAL PDR X		
CLASS: <u>U</u> PROP INFO	INPUT	NO CYS REC'D 1	DOCKET NO: 50-220			

DESCRIPTION:
Ltr furnishing info regarding the NMP Fitzpatrick #4 transmission line to run between the JAFNPP 115 KV bus and the NMPNS Unit #1 115 KV bus w/attached Figure 1.....

ENCLOSURES:

ACKNOWLEDGED
DO NOT REMOVE.

PLANT NAMES: Nine Mile Point, Unit 1

FOR ACTION/INFORMATION 01-31-73 rht

BUTLER(L) W/ Copies	KNIEL(L) W/ Copies	VASSALLO(L) W/ Copies	✓ZIEMANN(L) W/ 9 Copies	KNIGHTON(ENVIRO) W/ Copies
CLARK(L) W/ Copies	SCHWENCER(L) W/ Copies	H. DENTON W/ Copies	CHITWOOD(FM) W/ Copies	YOUNGBLOOD(ENVIRO) W/ Copies
GOLLER W/ Copies	STOLZ(L) W/ Copies	SCHEMEL(L) W/ Copies	DICKER(ENVIRO) W/ Copies	

INTERNAL DISTRIBUTION

✓REG FILE	TECH REVIEW	VOLLMER	HARLESS	WADE	E
✓AEC PDR	HENDRIE	DENTON		SHAFFER	F & M
✓OGC, ROOM P-506A	SCHROEDER	GRIMES	F & M	BROWN	E
✓MUNIZING/STAFF	MACCARY	GAMMILL	SMILEY	G. WILLIAMS	E
CASE	LANGE	KASTNER	NUSSBAUMER	E. GOULBOURNE	L
GIAMBUSSO	PAWLICKI	BALLARD		A/T IND	
BOYD-L(BWR)	SHAO	FINE	LIC ASST.	BRATTMAN	
DEYOUNG-L(PWR)	KNUTH		SERVICE L	SALTZMAN	
✓SKOVHOLT-L	STELLO	ENVIRO	MASON L		
P. COLLINS	MOORE	MULLER	WILSON L	PLANS	
	HOUSTON	DICKER	KARI L	MCDONALD	
REG OPR	TEDESCO	KNIGHTON	SMITH L	✓DUBE	
✓FILE & REGION (2)	LONG	YOUNGBLOOD	GEARIN L		
MORRIS	LAINAS	PROJECT LEADER	DIGGS L	INFO	
STELLE	BENAROYA		TEETS L	C. MILES	
			LEE L		

EXTERNAL DISTRIBUTION

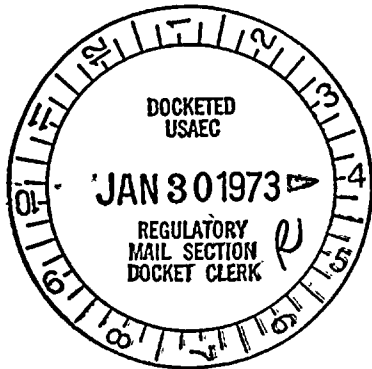
✓1-LOCAL PDR Oswego, New York		
✓1-DTIE(ABERNATHY)	(1)(5)(9)-NATIONAL LAB'S	1-PDR-SAN/LA/NY
✓1-NSIC(BUCHANAN)	1-R. CARROLL-OC, GT-B227	1-GERALD LELLOUCHE
1-ASLB-YORE/SAYRE	1-R. CATLIN, A-170-GT	BROOKHAVEN NAT. LAB
WOODWARD/H. ST.	1-CONSULANT'S	1-AGMED(WALTER KOESTER,
✓16-CYS ACRS (Sent to R. Diggs)	NEWMARK/BLUME/AGABIAN	Rm C-427, GT)
01-31-73		1-RD...MULLER...F-309GT

NIAGARA MOHAWK POWER CORPORATION

NIAGARA  MOHAWK

Regulatory

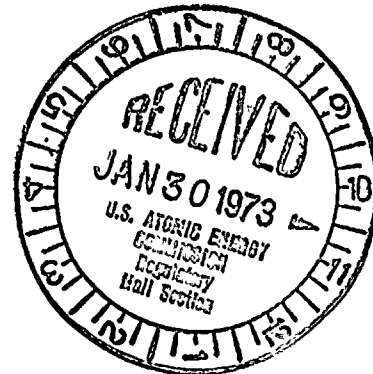
File Cy.



Nine Mile Point Nuclear Station
Post Office Box 32
Lycoming, New York 13093

January 26, 1973

Mr. Donald J. Skovholt
Assistant Director for Reactor Operations
Division of Reactor Licensing
United States Atomic Energy Commission
Washington, D. C. 20545



Dear Mr. Skovholt:

Re.: Provisional Operation License: DPR-17
Docket No.: 50-220

The permanent alignment of the 115 KV transmission lines, to provide incoming power for both the James A. FitzPatrick Nuclear Power Station and the Nine Mile Point Nuclear Station Unit #1, calls for a transmission line between the two plants. This line, NMP-FitzPatrick #4 will run between the JAFNPP 115 KV bus and the NMPNS Unit #1 115 KV bus, and will replace the existing NMP-Light House Hill #4 incoming 115 KV feed to NMPNS Unit #1.

Following a thorough review, it has been deemed necessary to temporarily energize the James A. FitzPatrick 115 KV bus from the existing Oswego-NMP #1 115 KV transmission line utilizing the NMP-FitzPatrick #4 115 KV transmission line. See Figure 1. This temporary connection of the 115 KV circuits is necessary to realign the Nine Mile Point Site 115 KV incoming power transmission lines in conformance with that presented in J.A.F. FSAR Volume IV, Section 8. Once the temporary connection is made and the James A. FitzPatrick 115 KV bus energized the existing FitzPatrick - Light House Hill #4 Transmission line will be disconnected.

This temporary alignment will minimize the length of time that any one of the two 115 KV transmission lines that provide incoming power to Nine Mile Point Nuclear Station Unit #1 are out of service.

The 115 KV temporary tie line between the FitzPatrick Plant and NMPNS is designed to equal or exceed the requirements of the existing incoming lines. Protective relaying will be provided for automatic tripping of the circuit breakers under fault conditions. Most line faults are transient in nature, therefore, automatic reclosing equipment and circuitry is provided to re-energize the lines after the extremely short interruption required to clear the fault.



11

11
11

11

11

11

11

11

11

11

11

11

11

11

11

11

11

11

11

11

11

11

11

11

11

11

11

11

11

11

11

11

11

11

11

11

11

11

11

11

11

11

11

11

11

11

11

11

11

Mr. Donald J. Skovholt
U.S. Atomic Energy Commission

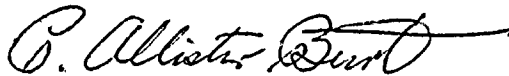
January 26, 1973

The temporary connection to the Oswego-NMP #1 115 KV transmission line will result in the NMP-FitzPatrick #4 115 KV transmission line being perpendicular to, and directly under the present NMP-Light House Hill #4 115 KV transmission line.

In the event of a catastrophic failure of the NMP-Light House Hill #4 line, resulting in those conductors falling on the temporary 115 KV feed thru NMP-FitzPatrick #4 to the FitzPatrick 115 KV Bus, it is conceivable that the temporary 115 KV feed conductors would be burned away. The resulting work required to cut away the temporary 115 KV conductors from the Oswego-NMP #1 transmission line would be four (4) hours. During this period of time, with both 115 KV transmission lines out of service, Technical Specification 3.6.3 e.2 would apply. The specification states that both diesel-generator power systems shall be operable with one diesel-generator running. If one of the two 115 KV transmission lines is not available after 24 hours, a normal orderly shutdown will be initiated within one hour. No undue or unresolved safety hazard is presented by this temporary connection.

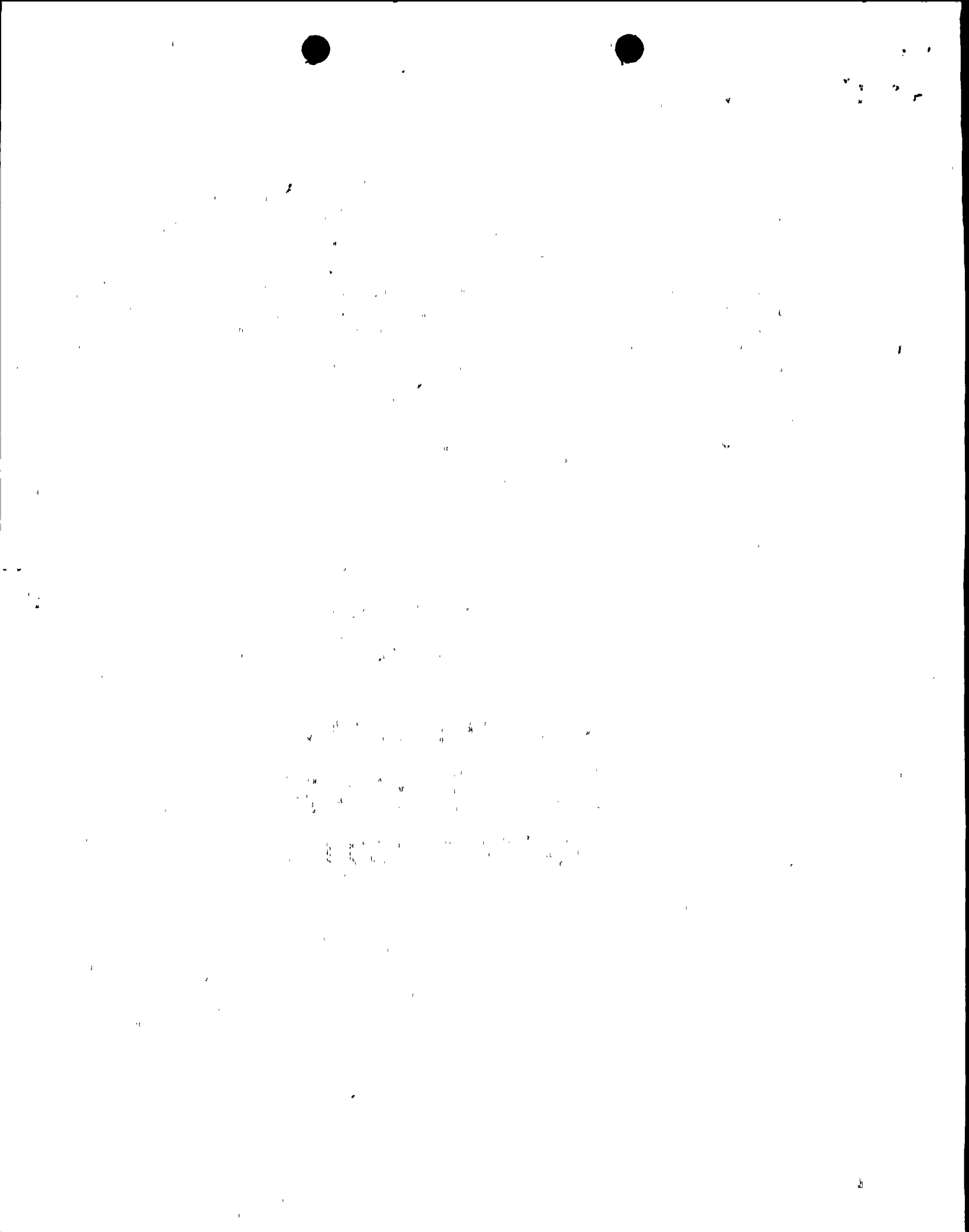
It is expected that this temporary alignment will remain for a maximum of four (4) weeks. In addition, it shall be verified that both diesel-generators are operable prior to initiating work on the temporary connection.

Very truly yours,



P. A. Burt
General Superintendent
Nuclear Generation

PAB/cm





NINE MILE POINT
UNIT #1
115 KV YARD

R-10

R-40

TEMPORARY
CONNECTION

NMP-FITZPATRICK #4 (115 KV)

JAMES A.
FITZPATRICK

115 KV
YARD

FITZPATRICK-LIGHTHOUSE HILL #3 (115 KV)

NMP-LIGHTHOUSE HILL #4 115 KV

TO OSWEGO
STEAM STATION

TO LIGHTHOUSE
HILL HYDRO -
ELECTRIC PLANT

FIGURE 1

Regulatory
File Cy.
Revised w/Aty Dates 01-26-73

OSWEGO-NMP #1 (115 KV)

