

**AEC DISTRIBUTION FOR PART 50 DOCKET MATERIAL  
(TEMPORARY FORM)**

CONTROL NO: 1955

FILE: MON.REPT. FILE.P/O

<b>FROM:</b> Niagara Mohawk Power Corporation Syracuse, N. Y. 13202 R. R. Schneider			<b>DATE OF DOC</b> 2-26-74	<b>DATE REC'D</b> 3-8-74	<b>LTR</b> X	<b>MEMO</b>	<b>RPT</b>	<b>OTHER</b>
<b>TO:</b> DL			<b>ORIG</b> 1 signed	<b>CC</b>	<b>OTHER</b>	<b>SENT AEC PDR</b> X		<b>SENT LOCAL PDR</b> X
<b>CLASS</b>	<b>UNCLASS</b>	<b>PROP INFO</b>	<b>INPUT</b>	<b>NO CYS REC'D</b>		<b>DOCKET NO:</b>		
	XXXX			1		50-220		
<b>DESCRIPTION:</b> Ltr trans the following:  <b>PLANT NAME:</b> Nine Mile Point Unit # 1				<b>ENCLOSURES:</b> January 1974 Monthly Report, "Plant & Component Operability & Availability".... This Report to be use for preparing Grey Book by Plans & Operations.  ( 1 cy rec'd)				

**Do Not Remove**  
**ACKNOWLEDGED**

FOR ACTION/INFORMATION

3-9-74

AB

BUTLER(L) W/ Copies	SCHWENCER(L) W/ Copies	✓ ZIEMANN(L) W/ 1 Copies (Info)	REGAN(E) W/ Copies
CLARK(L) W/ Copies	STOLZ(L) W/ Copies	DICKER(E) W/ Copies	✓ W. MAGEE W/2 Copies
GOLLER(L) W/ Copies	VASSALLO(L) W/ Copies	KNIGHTON(E) W/ Copies	W/ Copies
KNIEL(L) W/ Copies	SCHEMEL(L) W/ Copies	YOUNGBLOOD(E) W/ Copies	W/ Copies

**INTERNAL DISTRIBUTION**

✓ REG FILE ✓ AEG-PDR OGC, ROOM P-506A ✓ MUNTZING/STAFF CASE GIAMBUSSO BOYD MOORE (L) (BWR) DEYOUNG (L) (PWR) SKOVHOLT (L) P. COLLINS DENISE REG OPR FILE & REGION (3) MORRIS STEELE	✓ <u>TECH REVIEW</u> HENDRIE SCHROEDER MACCARY KNIGHT PAWLICKI SHAO STELLO HOUSTON NOVAK ROSS IPPOLITO TEDESCO LONG LAINAS BENAROYA VOLLMER	✓ DENTON GRIMES GAMMILL KASTNER BALLARD SPANGLER  ✓ <u>ENVIRO</u> MULLER DICKER KNIGHTON YOUNGBLOOD REGAN PROJECT LDR  ✓ HARLESS	✓ <u>LIC ASST</u> DIGGS (L) GEARIN (L) GOULBOURNE (L) LEE (L) MAIGRET (L) SERVICE (L) SHEPPARD (E) SMITH (L) TEETS (L) WADE (E) WILLIAMS (E) WILSON (L) S. REED (L)	✓ <u>A/T IND</u> BRAITMAN SALTZMAN B. HURT  ✓ <u>PLANS</u> MCDONALD DUBE w/Input  ✓ <u>INFO</u> C. MILES B. KING  ✓ S. CHAPMAN
--	---	---	--	---

**EXTERNAL DISTRIBUTION**

✓ 1 - LOCAL PDR Oswego, N. Y. ✓ 1 - DTIE (ABERNATHY) ✓ 1 - NSIC (BUCHANAN) 1 - ASLB (YORE/SAYRE/ WOODARD/"H" ST. 16 - CYS ACRS HOLDING	(1) (2) (10) - NATIONAL LAB'S 1-ASLBP (E/W Bldg, Rm 529) 1-W. PENNINGTON, Rm E-201 GT 1-CONSULTANT'S NEWMARK/BLUME/AGBABIAN 1-GERALD ULRIKSON...ORNL	1-PDR-SAN/LA/NY 1-GERALD LELLOUCHE BROOKHAVEN NAT. LAB 1-AGMED (Ruth Gussman) RM-B-127, GT. 1-RD..MULLER..F-309 GT
---	---	---



1900

1900

1900

1900

1900

1900

1900

1900

1900

1900

1900

1900

1900

1900

Regulatory

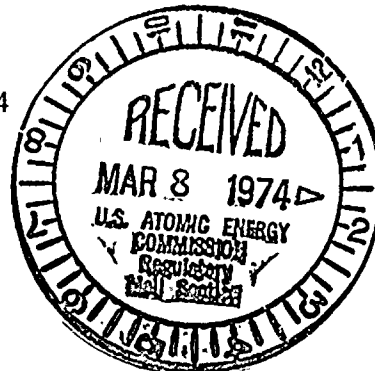
Policy

NIAGARA MOHAWK POWER CORPORATION

NIAGARA  MOHAWK

300 ERIE BOULEVARD WEST  
SYRACUSE, N. Y. 13202

February 26, 1974



Office of Plans & Schedules  
Directorate of Licensing  
United States Atomic Energy Commission  
Washington, D. C. 20545

50-220

~~50-245~~

Gentlemen:

Please find enclosed copies of the following reports for the  
Nine Mile Point Nuclear Station Unit #1.

1. Daily Plant Power
2. Operating Status
3. Plant Shutdowns
4. Major Shutdown Forecast

It should be noted that reactor critical hours and forced outage  
hours were not required by the conditions of the initial license, and  
therefore are not readily available on a cumulative basis.

Very truly yours,

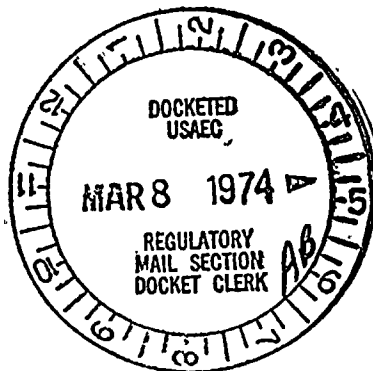


R.R. Schneider  
Vice President - Electric Operations

RJP:cm

cc: RO:I

Enclosures  
REGISTERED MAIL  
RETURN RECEIPT REQUEST



1955



1

2

3

4

UNIT NMPNS Unit #1DATE 74 02 24COMPLETED BY T.J.Perkins - Station  
SuperintendentDAILY PLANT POWER OUTPUTMONTH 74 01

<u>DAY</u>	<u>AVERAGE DAILY MWe-net</u>	<u>DAY</u>	<u>AVERAGE DAILY MWe-net</u>
1	<u>578</u>	25	<u>581</u>
2	<u>579</u>	26	<u>580</u>
3	<u>582</u>	27	<u>580</u>
4	<u>582</u>	28	<u>580</u>
5	<u>582</u>	29	<u>580</u>
6	<u>558</u>	30	<u>580</u>
7	<u>582</u>	31	<u>581</u>
8	<u>579</u>		
9	<u>578</u>		
10	<u>580</u>		
11	<u>582</u>		
12	<u>580</u>		
13	<u>580</u>		
14	<u>581</u>		
15	<u>582</u>		
16	<u>579</u>		
17	<u>570</u>		
18	<u>575</u>		
19	<u>576</u>		
20	<u>563</u>		
21	<u>579</u>		
22	<u>580</u>		
23	<u>580</u>		
24	<u>581</u>		



2

UNIT NAME NINE MILE POINT NUCLEAR STATION UNIT #1

DATE 740225

COMPLETED BY T. J. Perkins - Station Superintendent

OPERATING STATUS

- 1. REPORTING PERIOD: 740101 TO 740131  
GROSS HOURS IN REPORTING PERIOD: 743 hours
- 2. CURRENTLY AUTHORIZED POWER LEVEL Mwt 1850 MWe-NET 610
- 3. POWER LEVEL TO WHICH RESTRICTED (IF ANY): 1770 MW(t)
- 4. REASONS FOR RESTRICTIONS (IF ANY):  
Unavailability of second stage reheater limits maximum steam flow.

	THIS MONTH	YR-TO-DATE	CUMULATIVE TO DATE
5. HOURS REACTOR WAS CRITICAL. . . . .	<u>743</u>	<u>743</u>	<u>Not available</u>
6. HOURS GENERATOR ON-LINE . . . . .	<u>743</u>	<u>743</u>	<u>24,107.8</u>
7. GROSS THERMAL POWER GENERATED (MWH) . . . . .	<u>1,304,047</u>	<u>1,304,047</u>	<u>37,667,830</u>
8. GROSS ELECTRICAL POWER GENERATED (MWH). . . . .	<u>443,325</u>	<u>443,325</u>	<u>12,410,408</u>
9. NET ELECTRICAL POWER GENERATED (MWH). . . . .	<u>430,315</u>	<u>430,315</u>	<u>12,024,807</u>
10. REACTOR AVAILABILITY FACTOR (1) . . . . .	<u>100</u>	<u>100</u>	<u>Not available</u>
11. PLANT AVAILABILITY FACTOR (2) . . . . .	<u>100</u>	<u>100</u>	<u>64.7</u>
12. PLANT CAPACITY FACTOR (3) . . . . .	<u>94.9</u>	<u>94.9</u>	<u>52.9</u>
13. FORCED OUTAGE RATE (4). . . . .	<u>0.0</u>	<u>0.0</u>	<u>Not available</u>
14. SHUTDOWNS SCHEDULED TO BEGIN IN NEXT 6 MONTHS (STATE TYPE, DATE AND DURATION OF EACH): Second major refueling outage -- from 740315 to 740510			

15. IF SHUTDOWN AT END OF REPORT PERIOD, ESTIMATED DATE OF STARTUP: N/A

16. PLANTS IN TEST STATUS (PRIOR TO COMMERCIAL OPERATION) REPORT THE FOLLOWING:

	DATE LAST FORECAST	DATE ACHIEVED	REASON FOR DIFFERENCE
INITIAL CRITICALITY		<u>690905</u>	
INITIAL ELECTRICAL POWER GENERATION		<u>691109</u>	
COMMERCIAL OPERATION		<u>691214</u>	
Cumulative hours start		<u>691101</u>	

- (1) REACTOR AVAILABILITY FACTOR =  $\frac{\text{HOURS REACTOR WAS CRITICAL}}{\text{GROSS HOURS IN REPORTING PERIOD}} * 100$
- (2) PLANT AVAILABILITY FACTOR =  $\frac{\text{HOURS GENERATOR ON-LINE}}{\text{GROSS HOURS IN REPORTING PERIOD}} * 100$
- (3) PLANT CAPACITY FACTOR =  $\frac{\text{NET ELECTRICAL POWER GENERATED}}{\text{CURRENTLY LICENSED POWER LEVEL} * \text{GROSS HOURS IN REPORTING PERIOD}} * 100$
- (4) FORCED OUTAGE RATE =  $\frac{\text{FORCED OUTAGE HOURS}}{\text{HOURS GENERATOR ON-LINE} + \text{FORCED OUTAGE HOURS}} * 100$



Handwritten marks and scribbles in the top right corner.

Faint, illegible text or markings in the upper middle section.

A single line of faint text or a separator line.

A single line of faint text.

A single line of faint text.

A line of faint text or a separator line.

A line of faint text.

A line of faint text.

A line of faint text.

A small mark or character.

A line of faint text.

A line of faint text.

A line of faint text.

A line of faint text.

A line of faint text.

A line of faint text.

A small mark or character.

A line of faint text.

A small mark or character.

A small mark or character.



SUMMARY:

Station operated with No Shutdowns during the Reporting Period.

UNIT NAME NMPNS Unit 1

DATE 74 02 25

COMPLETED BY T.J. Perkins - Station Superintendent

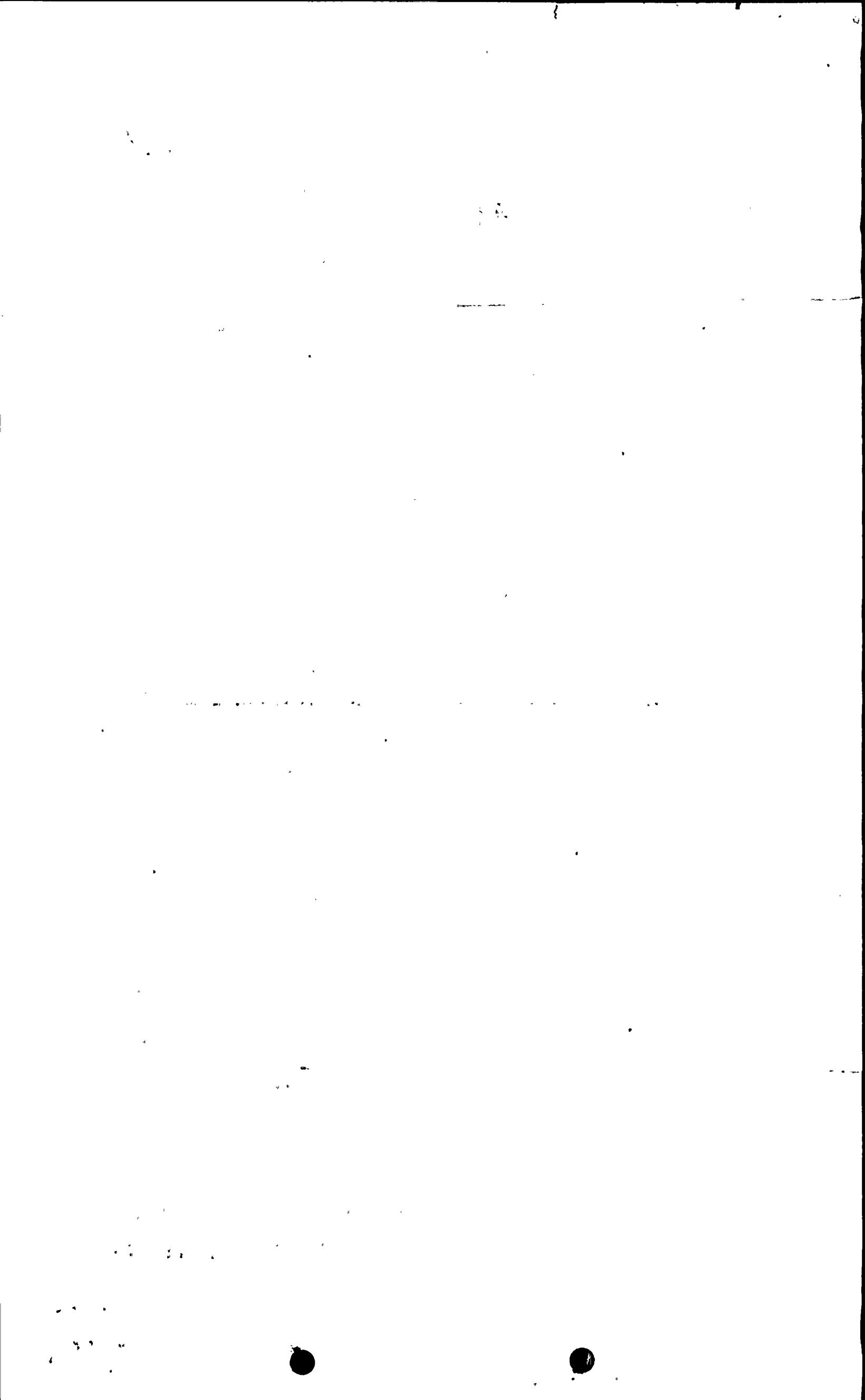
REPORT MONTH 7401

P L A N T S H U T D O W N S

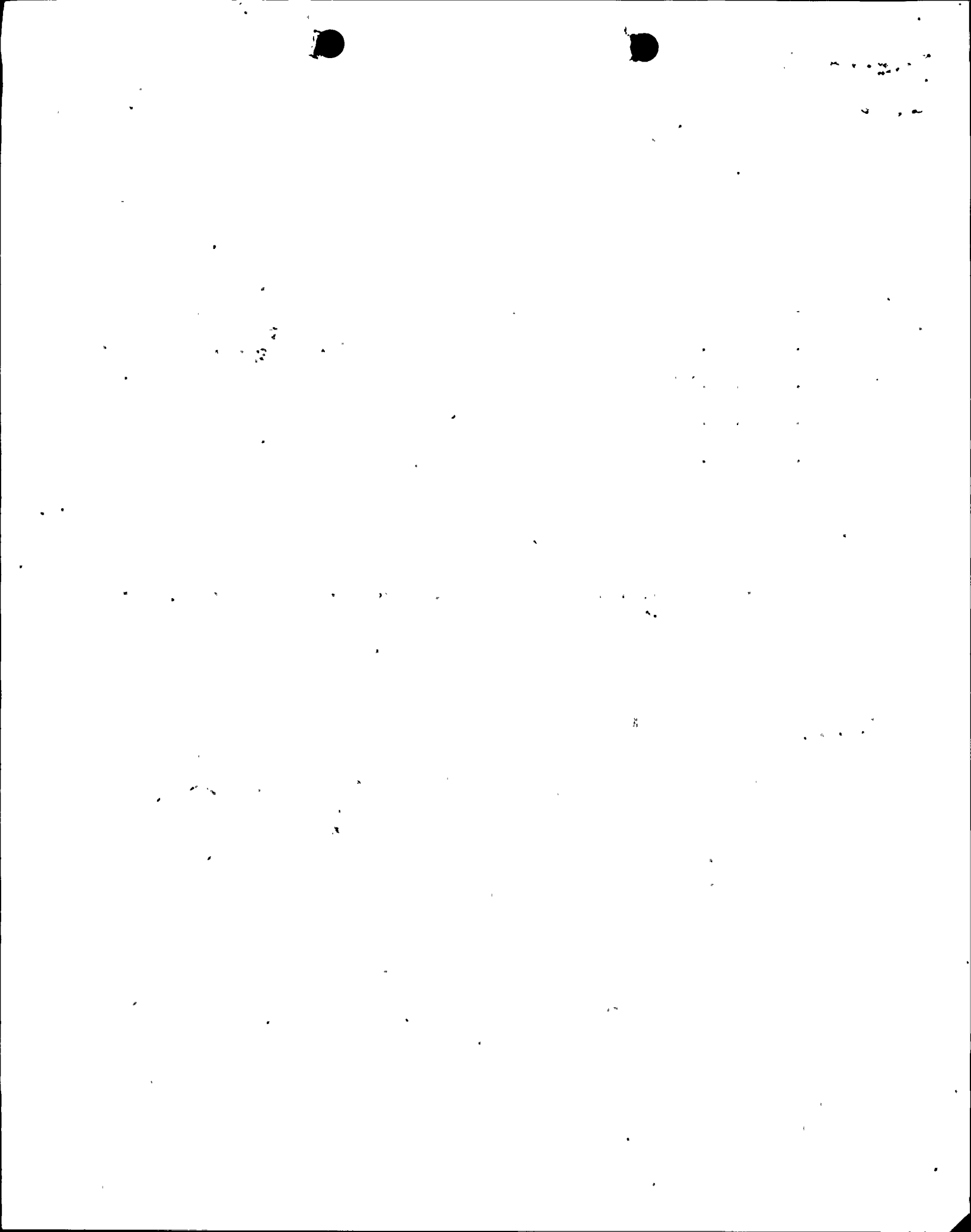
NO.	DATE	TYPE F-FORCED S-SCHEDULED	DURATION (HOURS)	REASON (1)	METHOD OF SHUTTING DOWN THE REACTOR (2)	COMMENTS

(1) REASON:  
 A-EQUIPMENT FAILURE (EXPLAIN)  
 B-MAINT. OR TEST  
 C-REFUELING  
 D-REGULATORY RESTRICTION  
 E-OPERATOR TRAINING AND  
 LICENSE EXAMINATION  
 F-ADMINISTRATIVE  
 G-OPERATIONAL ERROR  
 (EXPLAIN)

(2) METHOD:  
 A- MANUAL  
 B- MANUAL SCRAM  
 C- AUTOMATIC SCRAM







**AEC DISTRIBUTION FOR PART 50 DOCKET MATERIAL**  
(TEMPORARY FORM)

CONTROL NO: 2007  
Mo. Rpt File P/O  
FILE:

FROM: Niagara Mohawk Power Corporation Syracuse, N.Y. 13202 Mr. R.R. Schneider			DATE OF DOC 3-7-74	DATE REC'D 3-11-74	LTR X	MEMO	RPT	OTHER
TO: AEC			ORIG 1 signed	CC	OTHER	SENT AEC PDR XXX SENT LOCAL PDR XXX		
CLASS	UNCLASS XXX	PROP INFO	INPUT	NO CYS REC'D 1	DOCKET NO: 50-220			

DESCRIPTION:  
Ltr dtd 3-7-74 trans the January, 1974 monthly  
rpt "Plant and component operability and  
avalability"

**ACKNOWLEDGED**  
  
**DO NOT REMOVE**

PLANT NAME: Nine Mile Point #1

FOR ACTION/INFORMATION 3-11-74 JB

- |                        |                           |                            |                          |
|------------------------|---------------------------|----------------------------|--------------------------|
| BUTLER(L)<br>W/ Copies | SCHWENCER(L)<br>W/ Copies | ZIEMANN(L)<br>W/ Copies    | REGAN(E)<br>W/ Copies    |
| CLARK(L)<br>W/ Copies  | STOLZ(L)<br>W/ Copies     | DICKER(E)<br>W/ Copies     | ✓ J. Magee<br>W/2 Copies |
| GOLLER(L)<br>W/ Copies | VASSALLO(L)<br>W/ Copies  | KNIGHTON(E)<br>W/ Copies   | W/ Copies                |
| KNIEL(L)<br>W/ Copies  | SCHEMEL(L)<br>W/ Copies   | YOUNGBLOOD(E)<br>W/ Copies | W/ Copies                |

**INTERNAL DISTRIBUTION**

- |                  |             |             |                |              |
|------------------|-------------|-------------|----------------|--------------|
| ✓ REG FILE       | TECH REVIEW | DENTON      | LIC ASST       | A/T IND      |
| ✓ AEC PDR        | HENDRIE     | GRIMES      |                | BRAITMAN     |
| OGC, ROOM P-506A | SCHROEDER   | GAMMILL     | DIGGS (L)      | SALTZMAN     |
| ✓ MUNTZING/STAFF | MACCARY     | KASTNER     | GEARIN (L)     | B. HURT      |
| CASE             | KNIGHT      | BALLARD     | GOULBOURNE (L) | PLANS        |
| GIAMBUSO         | PAWLICKI    | SPANGLER    | LEE (L)        | ✓ MCDONALD   |
| BOYD             | SHAO        |             | MAIGRET (L)    | DUBE w/Input |
| MOORE (L) (EWR)  | STELLO      | ENVIRO      | REED (L)       | INFO         |
| DEYOUNG(L) (FWR) | HOUSTON     | MULLER      | SERVICE (L)    | C. MILES     |
| SKOVHOLT (L)     | NOVAK       | DICKER      | SHEPPARD (E)   | B. KING      |
| P. COLLINS       | ROSS        | KNIGHTON    | SMITH (L)      | ✓ Chapman    |
| DENISE           | IPPOLITO    | YOUNGBLOOD  | TEETS (L)      | ✓ Ziemann    |
| REG OPR          | TEDESCO.    | REGAN       | WADE (E)       |              |
| FILE & REGION(3) | LONG        | PROJECT LDR | WILLIAMS (E)   |              |
| MORRIS           | LAINAS      |             | WILSON (L)     |              |
| STEELE           | BENAROYA    | HARLESS     |                |              |
|                  | VOLLMER     |             |                |              |

**EXTERNAL DISTRIBUTION**

- |  |  |                                       |
|--|--|---------------------------------------|
| ✓ 1 - LOCAL PDR <u>Toms River, N.J.</u>  | 1-B & M SWINEBROAD                       | 1-P. R. DAVIS                         |
| ✓ 1 - DTIE (ABERNATHY)                   | (1) (2) (10) NATIONAL LAB'S              | 1-PDR-SAN/LA/NY                       |
| ✓ 1 - NSIC (BUCHANAN)                    | 1-ASLBP (E/W Bldg, Rm 529)               | 1-GERALD LELLOUCHE                    |
| 1 - ASLB (YORE/SAYRE/<br>WOODARD/"H" ST. | 1-W. PENNINGTON, Rm E-201 GT             | BROOKHAVEN NAT. LAB                   |
| 16 - CYS ACRS HOLDING                    | 1-CONSULTANT'S<br>NEWMARK/BLUME/AGBABIAN | 1-AGMED (Ruth Gussma<br>RM-B-127, GT. |
|  | 1-GERALD ULRIKSON... ORNL                | 1-RD. MULLER... F-309                 |

*MISC*

... ..

... ..

... ..

... ..

... ..

... ..

... ..

Regulatory

Fib Co.

NIAGARA MOHAWK POWER CORPORATION

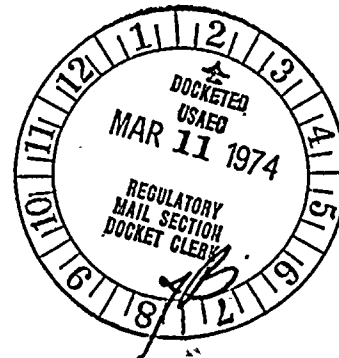
NIAGARA  MOHAWK

300 ERIE BOULEVARD WEST  
SYRACUSE, N.Y. 13202

March 7, 1974

50-220

Office of Plans & Schedules  
Directorate of Licensing  
United States Atomic Energy Commission  
Washington, D. C. 20545



Gentlemen:

Please find enclosed copies of the following reports for the  
Nine Mile Point Nuclear Station Unit 1:

1. Daily Plant Power
2. Operating Status
3. Plant Shutdowns

Very truly yours,

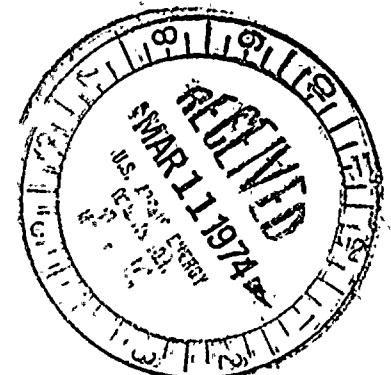
R. R. Schneider  
Vice President - Electric Operations

RJP:l

cc: RO:l

Enclosures

REGISTERED MAIL  
RETURN RECEIPT REQUEST



2007



1944