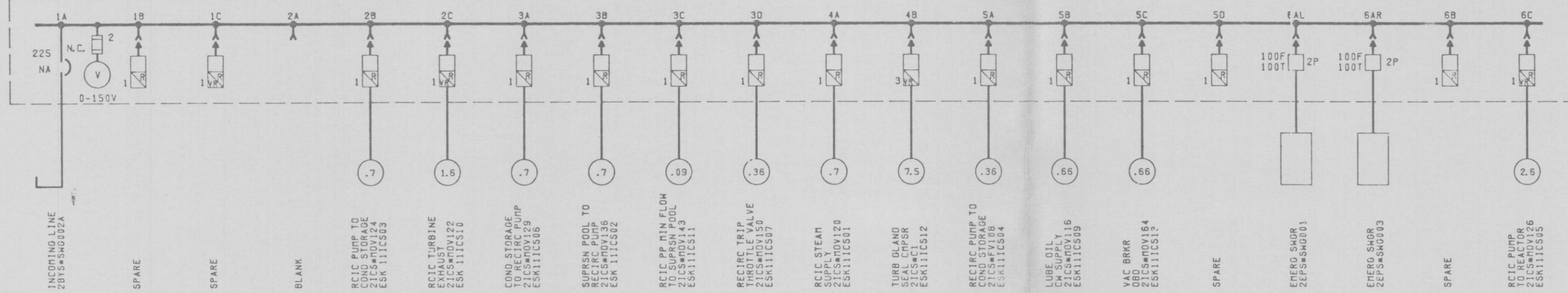
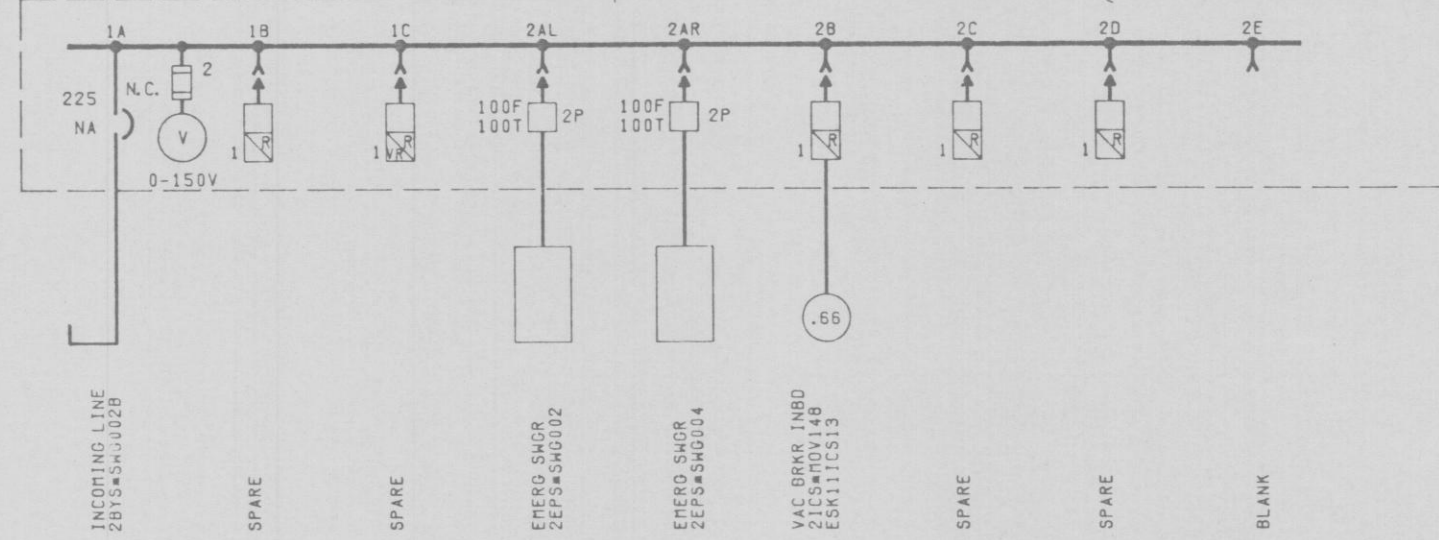


12177-EE-1CP-1

2DMS*MCCA1 (AUX BUILDING NORTH) EL 240'-0" GREEN



2DMS*MCCB1 (AUX BUILDING SOUTH) EL 240'-0" YELLOW



NOTES:
1. GENERAL NOTES, REFERENCES,
ADDITIONAL SYMBOLS & LOCATION
SYMBOLS EE-1AA.

P. APERTURE CARD



APPROVED
THOMAS J. H.
LICENSED PROFESSIONAL ENGINEER, NO. 57877
ALTERNATION EXCEPT BY A LICENSED PROFESSIONAL ENGINEER IS ILLEGAL.

NUCLEAR SAFETY RELATED
QA CAT 1

125V D.C. ONE LINE DIAGRAM
2DMS*MCCA1, & 2DMS*MCCB1
AUXILIARY BUILDING
NINE MILE POINT NUCLEAR STATION-UNIT 2
NIAGARA MOHAWK POWER CORPORATION
STONE & WEBSTER ENGINEERING CORPORATION
CHEMUNY, N.Y.

DRIVING NUMBER 12177-EE-1CP-1
DESIGNED BY L. HUSTER DRAWN BY L. BUYARSKI
CHECKED BY J. CHEESMAN

NO.	DATE	DESCRIPTION	BY	CHKD.
1		ORIGINAL ISSUE		
2		ISSUED FOR CONSTRUCTION		

NO.	DATE	DESCRIPTION	BY	CHKD.
30				

NO.	DATE	DESCRIPTION	BY	CHKD.
33A				

NO.	DATE	DESCRIPTION	BY	CHKD.
33A				