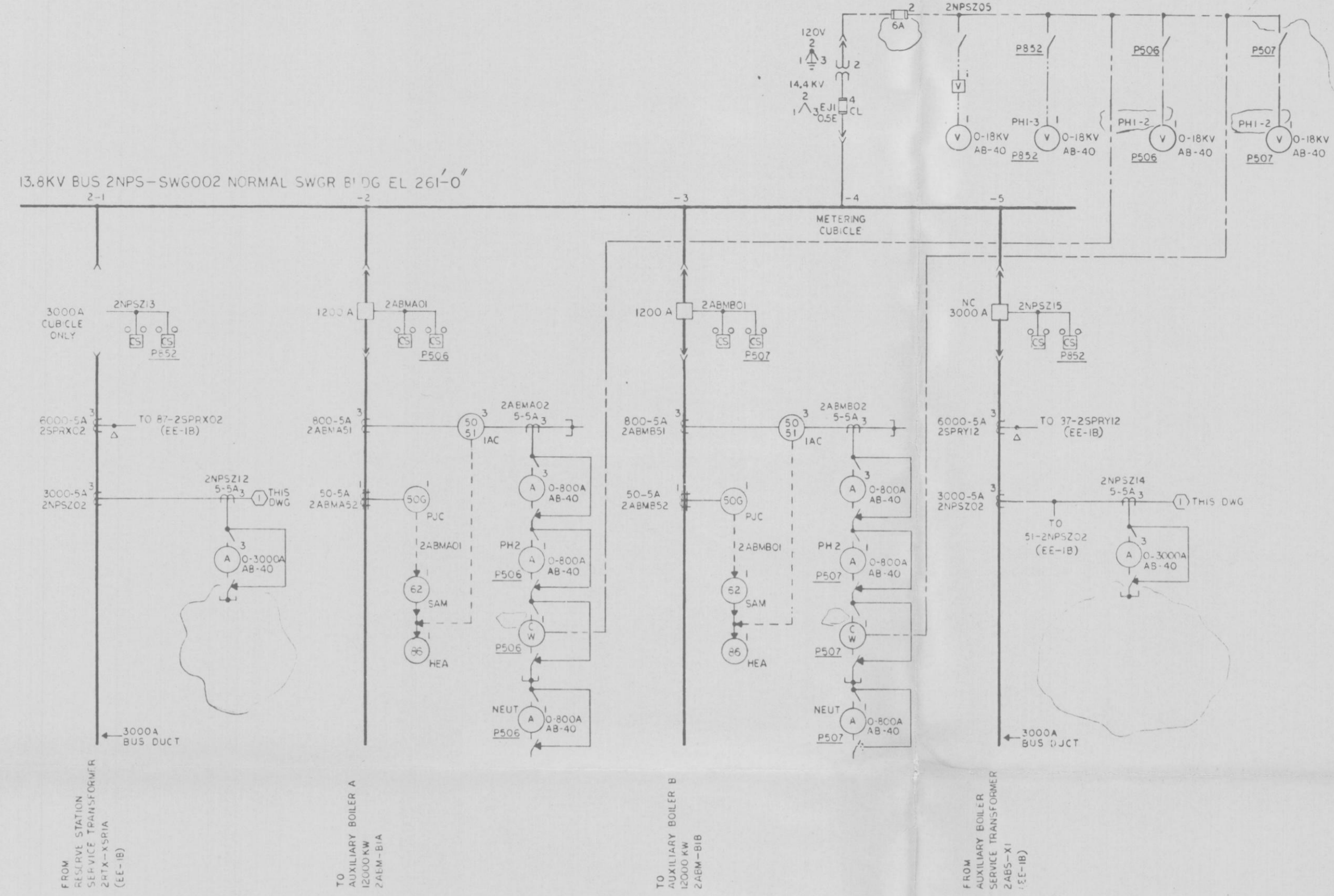


13.8KV BUS 2NPS-SWG002 NORMAL SWGR B'DG EL 261'-0"



NOTES:
1. GENERAL NOTES, REFERENCES, ADDITIONAL SYMBOLS & LOCATION SYMBOLS EE-IF.

PRC
APERTURE
CARD
QA CAT II



APPROVED *Joseph J. Kelly*
LICENSED PROFESSIONAL ENGINEER NO. 052673
STATE OF NEW YORK
ALTERATION EXCEPT BY A LICENSED PROFESSIONAL ENGINEER IS ILLEGAL

13.8 KV ONE LINE DIAGRAM
NORMAL BUS 2NPS-SWG002

NINE MILE POINT NUCLEAR STATION - UNIT 2
NIAGARA MOHAWK POWER CORPORATION
STONE & WEBSTER ENGINEERING CORPORATION
BOSTON, MASS.

DRAWING NUMBER 12177-EE-IG-6
DESIGNED BY J. L. CALO
CHECKED BY M. LUBRANO

ISSUE	DESCRIPTION	CHKD	DATE	APPV	DATE	ISSUE	DESCRIPTION	CHKD	DATE	APPV	DATE	ISSUE	DESCRIPTION	CHKD	DATE	APPV	DATE	
90	ISSUED FOR DESIGN REVIEW					90	SEE RECORD OF DRAWING CHANGES BCE-IG-5					90	REDRAWN, REVISE TITLE BLOCK, RELATING, METERING					90
90	SEE RECORD OF DRAWING CHANGES BCE-IG-6					90	ALSO UNRATED LOCAL AMPIRES AND SIZE BY 2NPSZ02 UNITS AND BOILER RATINGS					90	SUPERCEDED BY DWG EE-IG-5 WORK INC ON DWG EE-IG-3					90

THE INFORMATION ON THIS DRAWING MAY NOT BE COPIED OR USED FOR OTHER THAN THE CONSTRUCTION, MAINTENANCE OR REPAIR OF THE PLANT FACILITY DESCRIBED IN THE TITLE BLOCK.

Drawn by J. L. CALO
Checked by M. LUBRANO