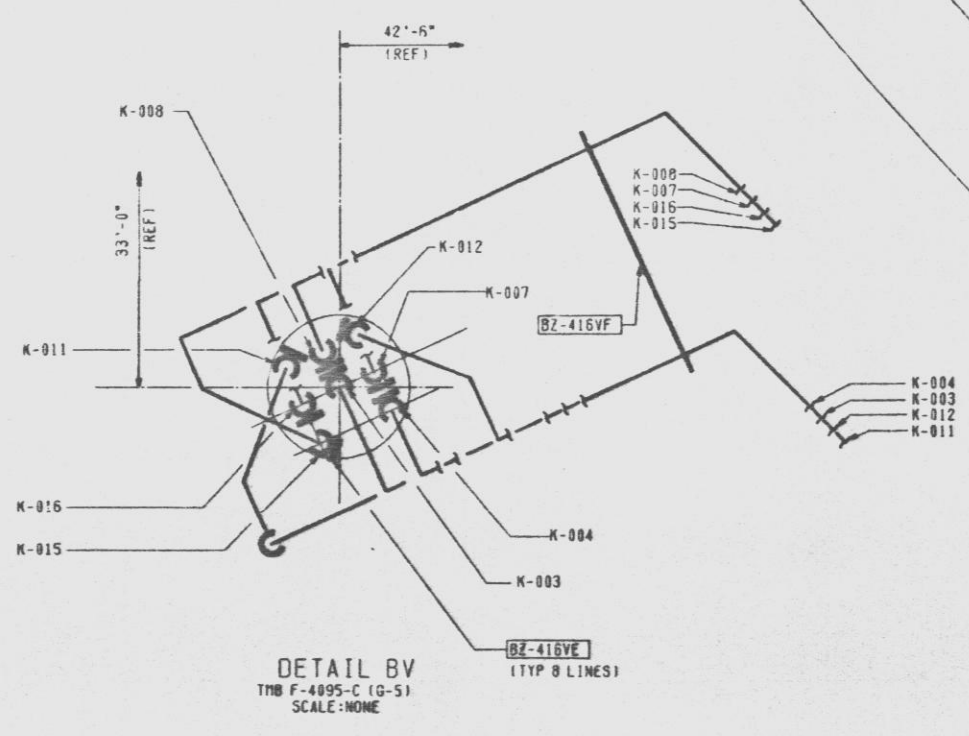
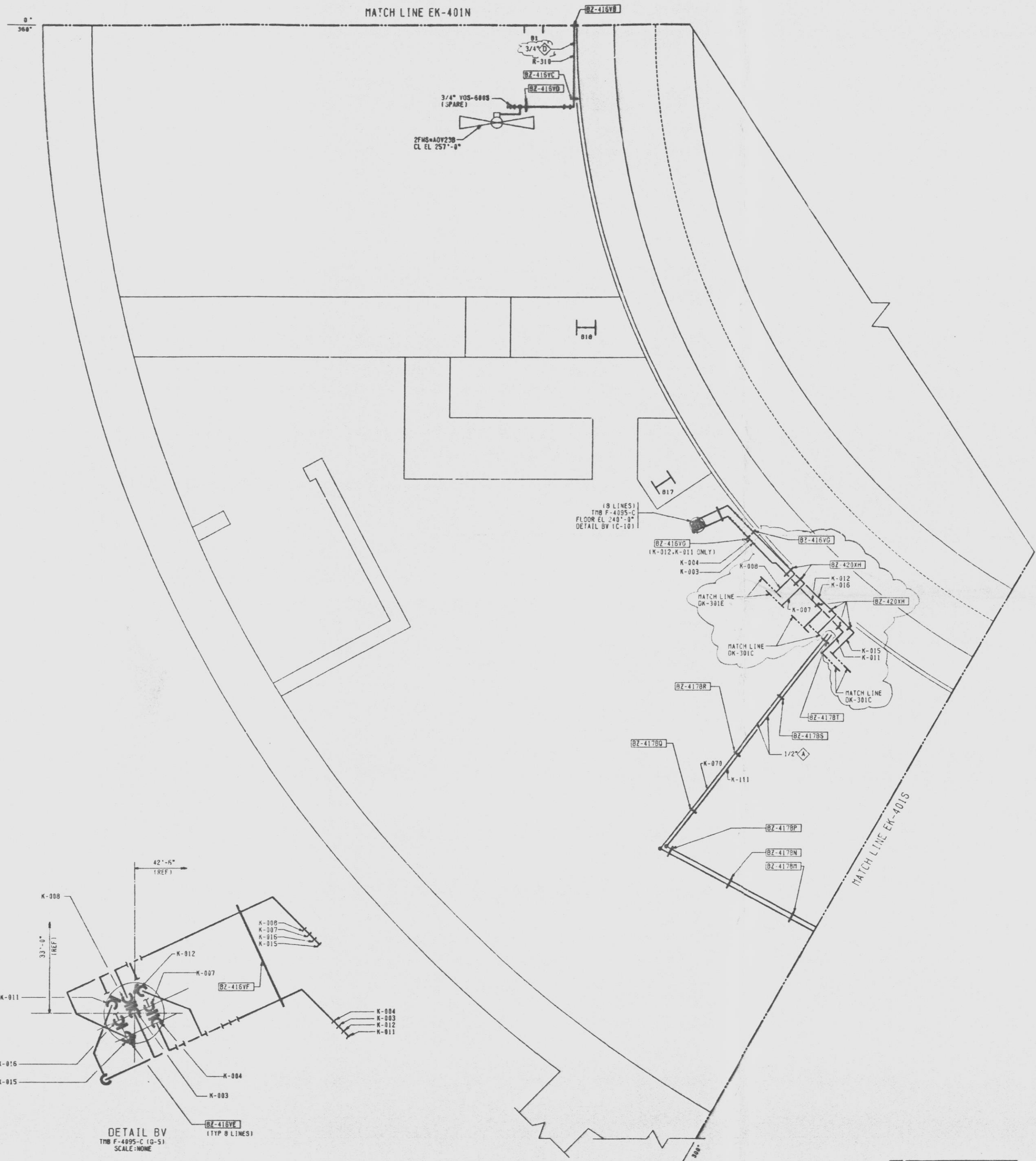


KEY PLAN EL 240'-0"



- NOTES:
- SCALE: 3/8"=1'-0" UNLESS OTHERWISE NOTED.
 - GENERAL NOTES AND REFERENCES: EK-401C.
 - FOR OZ TUBULATION AND LOCATION CLE ISOMETRIC DRAWING LISTED BELOW.
 - THE FOLLOWING ISOMETRIC DRAWINGS ARE ASSOCIATED WITH THIS DRAWING:
- | ISO SHD | LINE REF |
|---------|----------------------------|
| DK-439 | K-303 |
| DN | K-304 |
| DP | K-304 |
| DQ | K-304, K-303, K-311, K-312 |
| DR | K-307 |
| DS | K-308 |
| DT | K-307, K-308, K-315, K-316 |
| DU | K-311 |
| DV | K-312 |
| DW | K-315 |
| DX | K-316 |
| DT | K-370 |
| DZ | K-111 |
| M | K-319 |
| CS | K-070, K-111 |

TI APERTURE CARD



APPROVED *William C. Babinski*
LICENSED PROFESSIONAL ENGINEER, N.Y.
ALTERATION EXCEPT BY A LICENSED PROFESSIONAL ENGINEER IS ILLEGAL

NUCLEAR SAFETY RELATED
QA CAT I, II

INSTRUMENT PIPING PLAN
REACTOR BUILDING
EL 240'-0" SH 6
 NINE MILE POINT NUCLEAR STATION-UNIT 2
 NIAGARA MOHAWK POWER CORPORATION
 STONE & WEBSTER ENGINEERING CORPORATION
 CHEERY HILL, N.Y.
 DRAWING NUMBER: **12177-EK-4011-2**

THE INFORMATION ON THIS DRAWING MAY NOT BE COPIED OR USED FOR OTHER THAN THE CONSTRUCTION, MAINTENANCE OR REPAIR OF THE PLANT FACILITY DESCRIBED IN THE TITLE BLOCK.

FOR CONSTRUCTION

SEE RECORD OF CHG CHANGES 12177-EK-4011-2

FOR CONSTRUCTION

NO.	DESCRIPTION	DATE	BY	CHECKED	APPROVED
1	ISSUED FOR CONSTRUCTION	10/21/77	W.C. BABINSKI		
2	REVISED				
3	REVISED				
4	REVISED				
5	REVISED				
6	REVISED				
7	REVISED				
8	REVISED				
9	REVISED				
10	REVISED				

THIS DRAWING CREATED ELECTRONICALLY

E. RUBNER
P. J. CONTE

DESIGNED BY: E. LOEE
CHECKED BY: T. FOWLER
DRAWN BY: E. LOEE
SCALE: 1"=10'

Handwritten notes and marks at the bottom of the page, including '24x', '20x', '16x', '12x', '12x', '10x', '20x', '12x', '20x', '20x'.