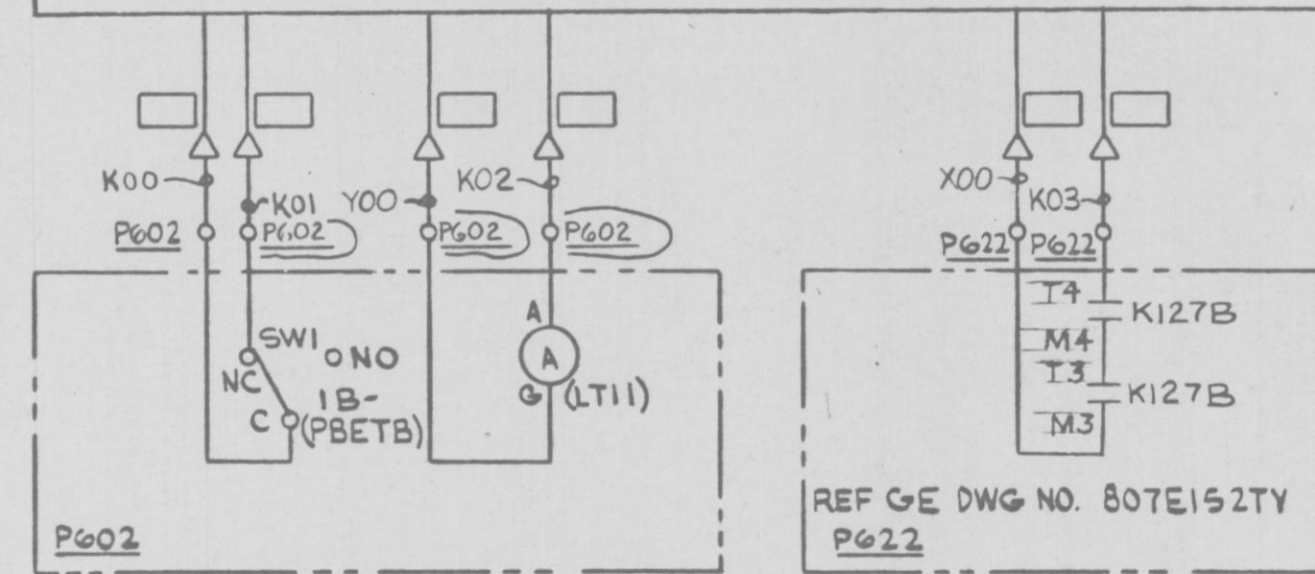
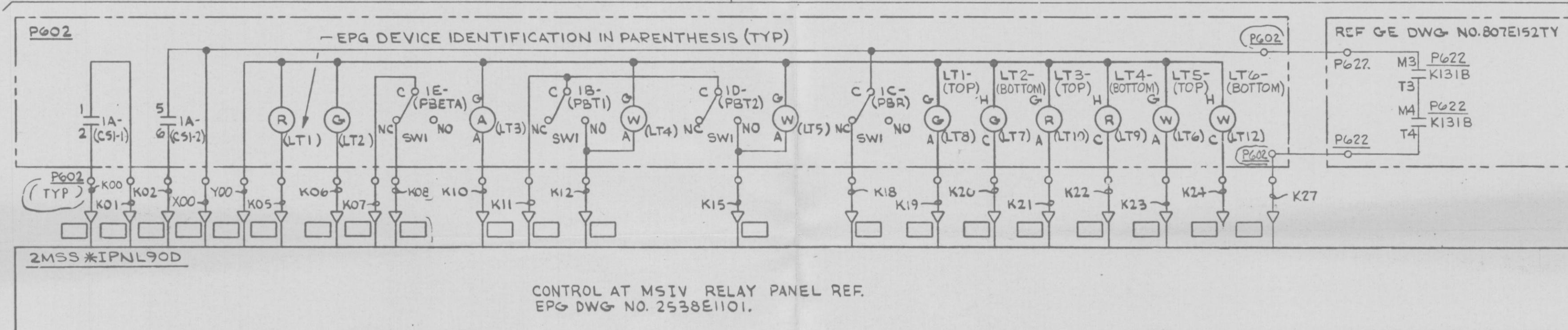


MAIN STEAM ISOL VALVE (INBD) 2MSS*HYV6D (B22-F022D) CKT NO. 2MSSD12 (YELLOW) RPS-UPS "A", NOTES 2 & 3



CKT NO. 2MSSD13 (YELLOW AND WHITE) RPS-UPS "B", NOTES 2 & 3

CONTROL AT MSIV RELAY PANEL REF. EPG DWG NO. 2538E1101.

PRC
APERTURE
CARD

| CS | DETAIL | ESK | SPARES | USED ON |
|------------|--------|-----|----------|---------|
| 1A-2MSSD12 | UI | 3C | 3-4, 7-8 | |
| 1B-2MSSD12 | MR | 3E | SW2 | |
| 1C-2MSSD12 | MN | 3E | SW2 | |
| 1D-2MSSD12 | MR | 3E | SW2 | |
| 1E-2MSSD12 | MN | 3E | SW2 | |
| 1B-2MSSD13 | MN | 3E | SW2 | |

NOTES:

- FOR COMPLETE CONT OF MAIN STM ISOL VALVE REFER TO EPG DWG 2538E1101.
- CIRCUITS 2MSSD12 AND 2MSSD13 ARE ASSOCIATED WITH NON-ESSENTIAL REDUNDANT POWER SUPPLIES (RPS-UPS "A" & "B" RESPECTIVELY) AND CABLES ASSOCIATED WITH EACH CIRCUIT MUST BE ROUTED IN SEPARATE GROUNDED CONDUITS.
- CABLES OF SAME COLOR AND POWERED FROM SAME SOURCE MAY BE ROUTED IN SAME CONDUIT.

NUCLEAR SAFETY RELATED
QA CAT I

AC ELEM DIAG-MISC AC CKTS
MAIN STM ISOL VALVE 2MSS*HYV6D CONT
NINE MILE POINT NUCLEAR STATION-UNIT 2
NIAGARA MOHAWK POWER CORPORATION

STONE & WEBSTER ENGINEERING CORPORATION

12177-ESK-7MSS16

| | | | | | | | | | |
|---|---|---|---|---|------------------------|----------------------|---------|----------|--------|
| 6 | 5 | 4 | 3 | M | DESIGN CONTROL ISSUE 3 | DESIGN CONTROL ISSUE | 10/6/82 | 11/24/80 | 4/6/77 |
| | | | | | ECN-013 | | | | |
| | | | | | | | | | |

CJ

RK

APM

4 1114

D