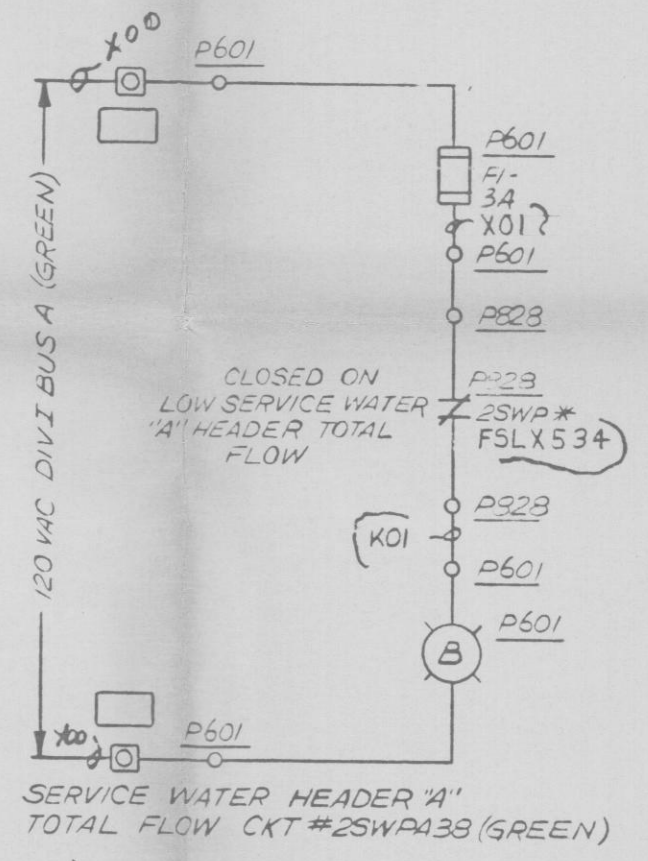
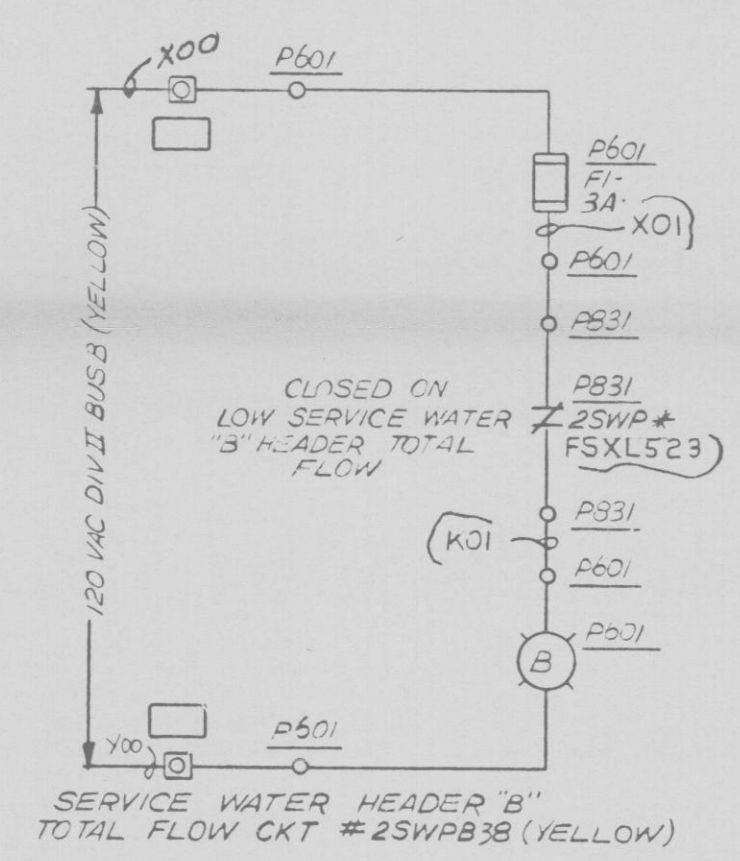


HPCS SWGR RM UNIT COOLER (2HVC\*UC102) SVCE WATER VALVE 2SWP#A0V581  
CKT # 2SWPN45 (PURPLE)

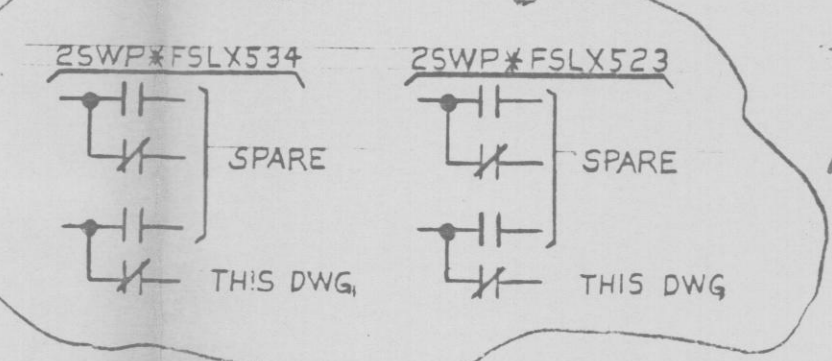
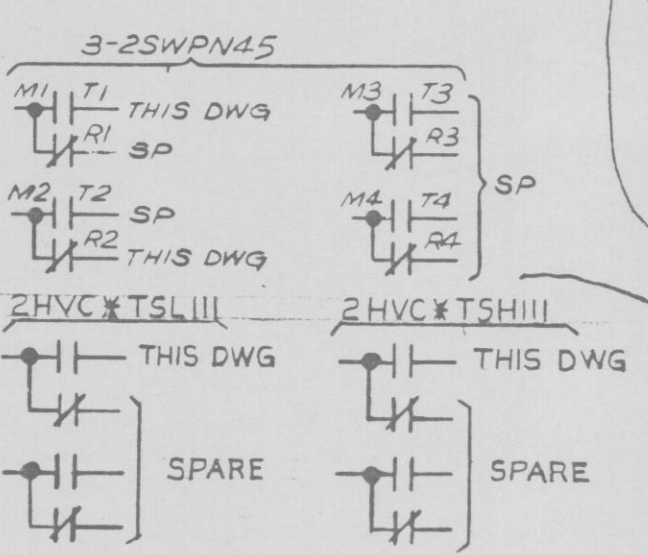


SERVICE WATER HEADER "A"  
TOTAL FLOW CKT #2SWPA38 (GREEN)



SERVICE WATER HEADER "B"  
TOTAL FLOW CKT #2SWPB38 (YELLOW)

LIMIT SWITCH DEVELOPMENT				
	33	VALVE POSITION		FUNCTION
		FULL OPEN	FULL CLOSE	
OPEN	1	A	B	GREEN LT
	2	C	D	SPARE
	3	E	F	SPARE
	4	G	H	SPARE
CLOSE	5	A	B	REP LT
	6	C	D	SPARE
	7	E	F	SPARE
	8	G	H	SPARE



PRC  
APERTURE  
CARD

- NOTES:
1. O ASSOCIATED VALVE OPENS WHEN SOV IS DE-ENERGIZED.
  2. LOGIC DIAGRAM LSK-9-10

CS	DETAIL	ESK	SPARES	USED ON
1-2SWPN45	K6	38	18	

DESIGN CONTROL ISSUE

6	5	4	3	2	1
				3/4/81	2/4/81
				ENCORP	2/4/81
				EVDCR	2/4/81
				440133	2/4/81
				440133	2/4/81

NUCLEAR SAFETY RELATED  
QA CAT I

AC ELEM DIAG MISC AC CKTS  
SERVICE WATER MISC CKTS

NINE MILE POINT NUCLEAR STATION-UNIT 2  
NIAGARA MOHAWK POWER CORPORATION

STONE & WEBSTER ENGINEERING CORPORATION

12177-ESK-7SWPI8

GE MED ✓  
GE LISTG

D