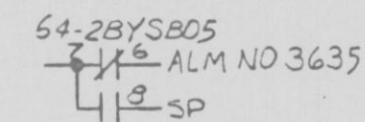
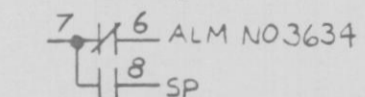
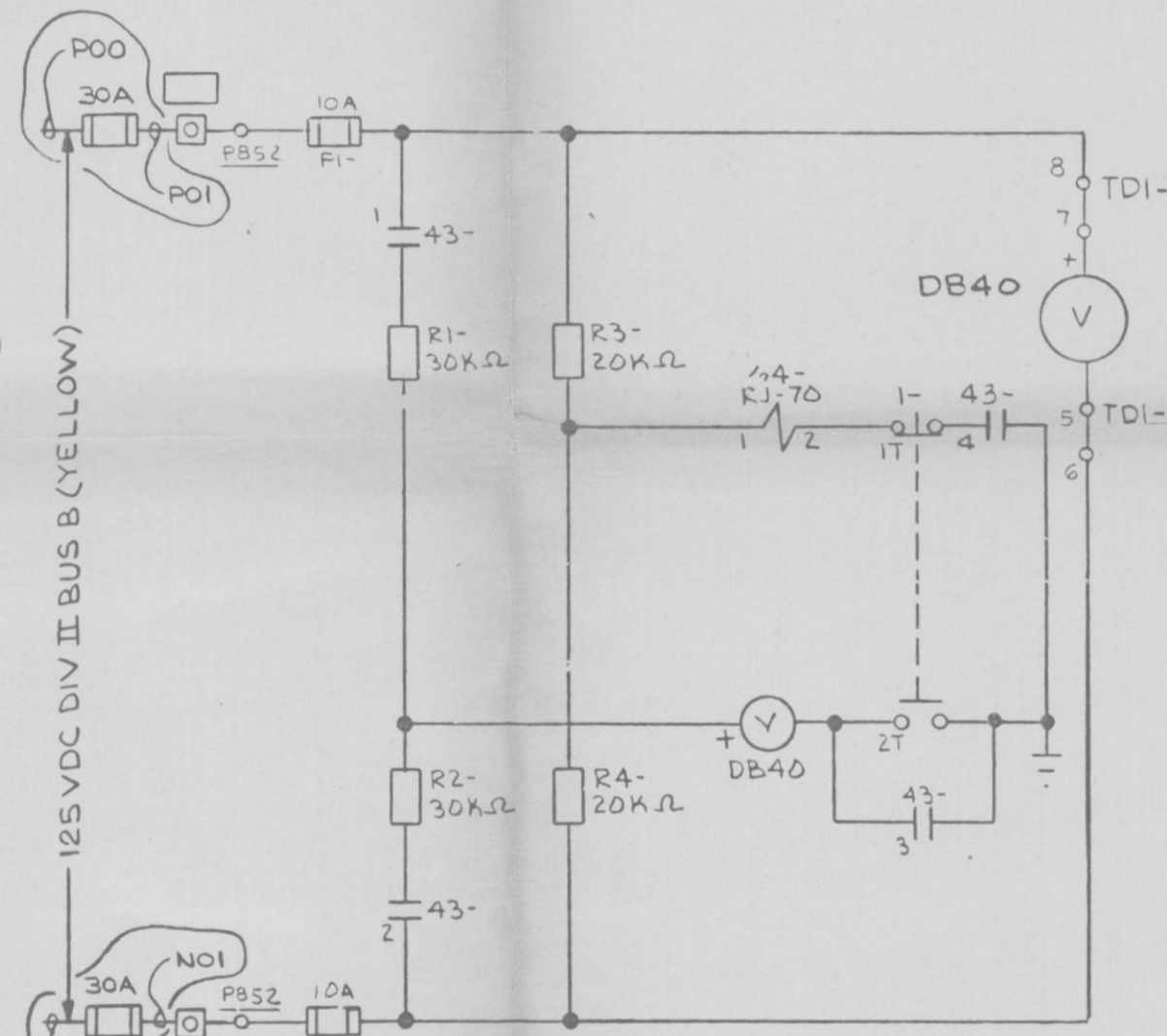
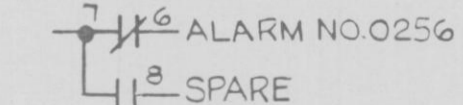


BATTERY 2A GROUND DETECTION 2BYS * SWG002A
CKT 2BYSAD5 (GREEN)

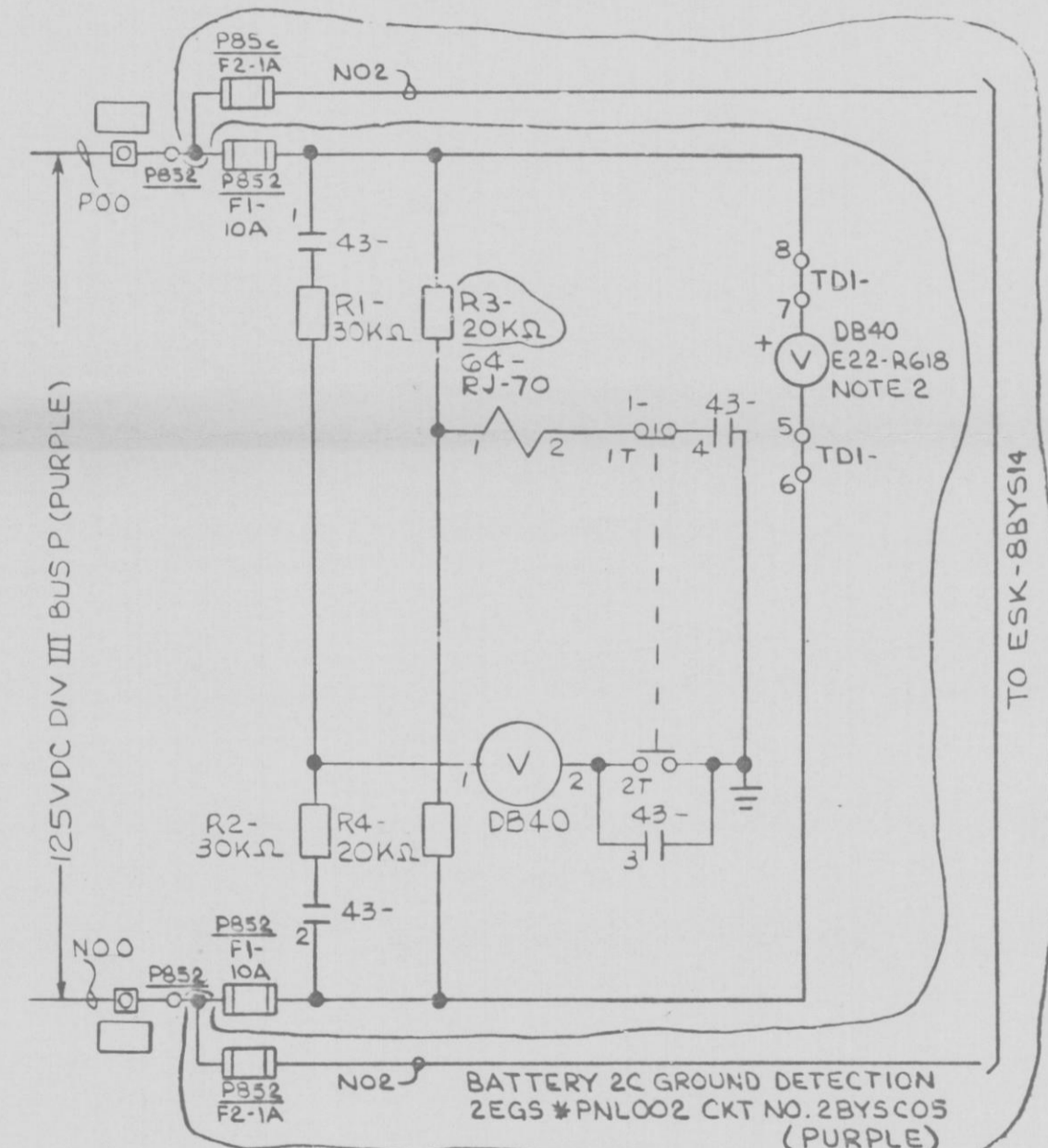
64-2BYSAD5



64-2BYS05



BATTERY 2B GROUND DETECTION 2BYS * SWG002B
CKT 2BYSB05 (YELLOW)



BATTERY 2C GROUND DETECTION
2EGS * PN002 CKT NO. 2BYS05
(PURPLE)

NOTE:
1. ALL EQUIPMENT LOCATED AT PB52
UNLESS OTHERWISE NOTED
2. GE MPL NO.

PRC
APERTURE
CARD

| CS | DETAIL | ESK | SPARES | USED ON |
|------------|--------|-----|--------|---------|
| 43-2BYSAD5 | "Y" | 3C | NONE | --- |
| 43-2BYSB05 | "Y" | 3C | NONE | --- |
| 1-2BYSAD5 | "Z" | 3B | 1B, 2B | --- |
| 1-2BYSB05 | "Z" | 3B | 1B, 2B | --- |
| 43-2BYS05 | "Y" | 3C | NONE | --- |
| 1-2BYS05 | "Z" | 3B | 1B, 2B | --- |

NUCLEAR SAFETY RELATED
QA CAT I

DC ELEMENTARY DIAGRAM-125VDC CKT
BATTERY GROUND DETECTION SCHEME
NINE MILE POINT NUCLEAR STATION-UNIT 2
NIAGARA MOHAWK POWER CORPORATION

STONE & WEBSTER ENGINEERING CORPORATION

12177-ESK-8BYS06

| DESIGN CONTROL ISSUE 2 | DESIGN CONTROL ISSUE 2 | PGCC |
|------------------------|------------------------|---------|
| 6 | 5 | 4 |
| 4 | 3 | 2 |
| 5-24-82 | 2-18-82 | 2/4/82 |
| ECN-005 | SWG 172 | 6-23-77 |
| | 229 | RR, TP |
| | | Yok |

GE-NEED ✓ GE-1516

D