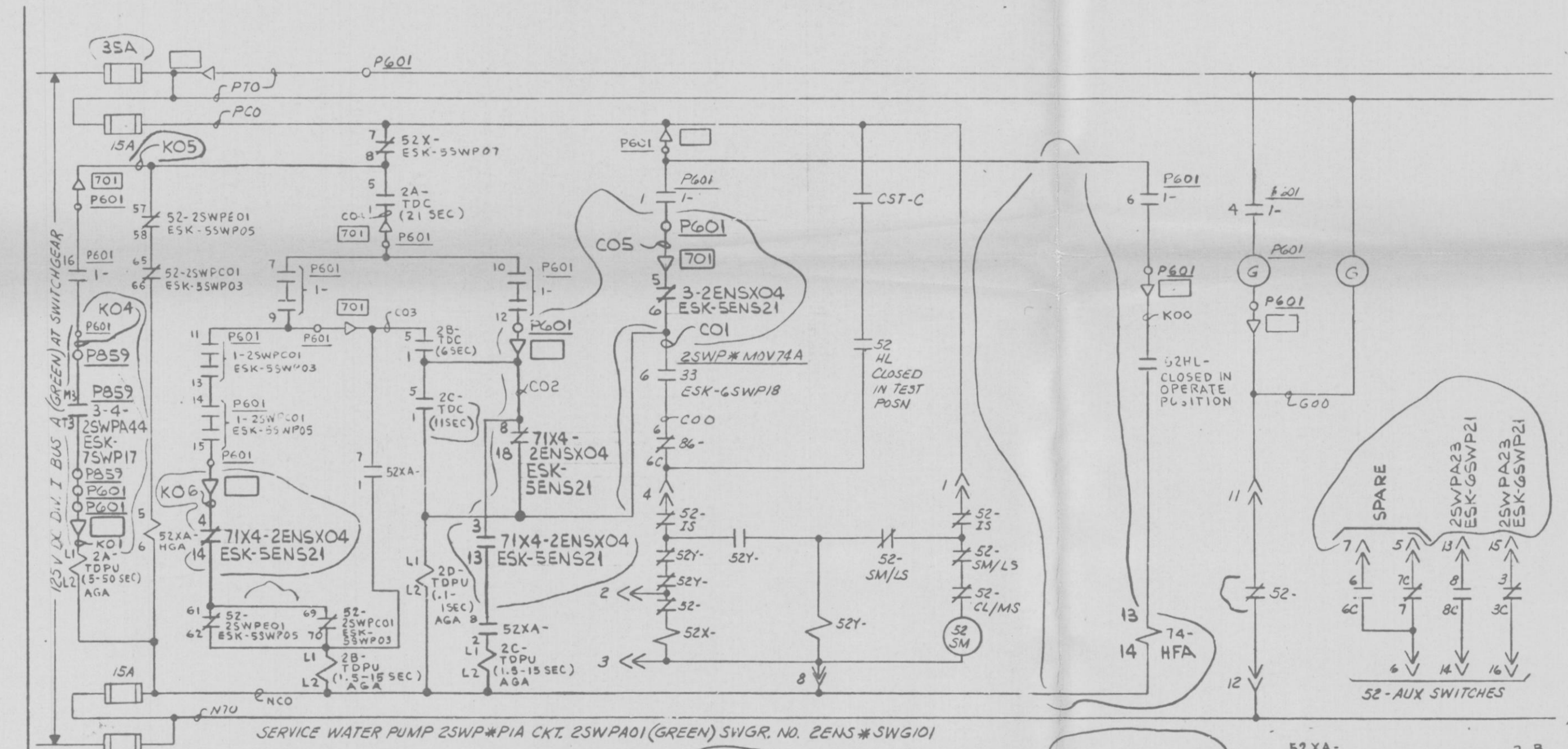


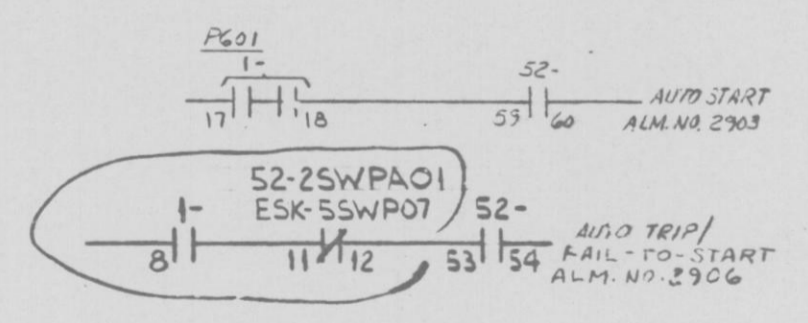
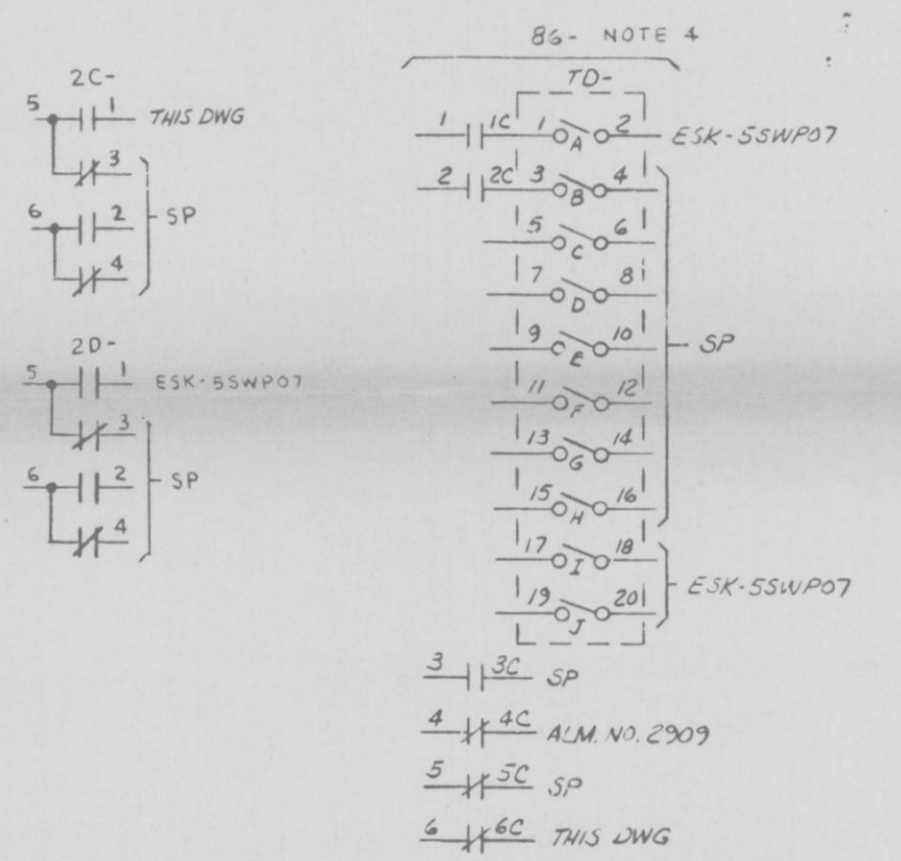
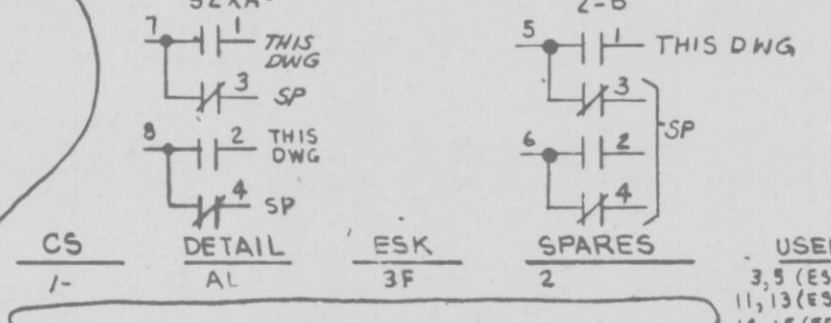
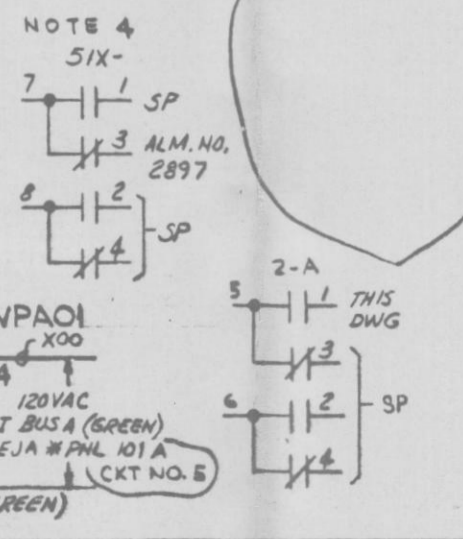
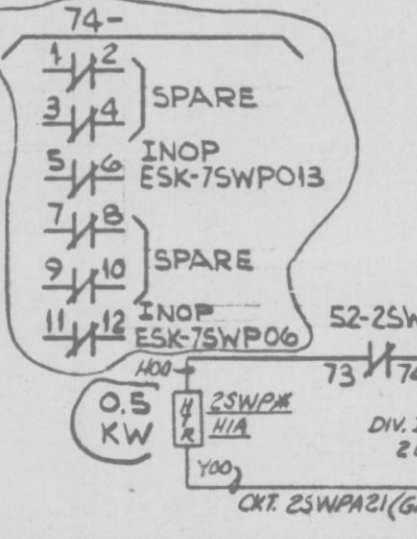
PRC APERTURE CARD



SERVICE WATER PUMP 2SWP#PIA CKT. 2SWPA01 (GREEN) SWGR. NO. 2ENS#SWG101

52 - STA AUX SWITCHES

51	53	55	57	59	61	63	65	67	69	71	73
52	54	56	58	60	62	64	66	68	70	72	74



NOTES:
 1. ALL EQUIPMENT LOCATED AT SWGR UNLESS OTHERWISE NOTED
 2. LOGIC DIAG. LSK 9-KA
 3. REMOTE SHUTDOWN REQUIREMENTS LATEX.
 4. COIL SHOWN ON ESK-5SWP07
 NUCLEAR SAFETY RELATED
 QA CAT I

DC ELEM DIAG-4.16 KV SWGR CKT
 SERVICE WATER PUMP 1A
 NINE MILE POINT NUCLEAR STATION-UNIT 2
 NIAGARA MOHAWK POWER CORPORATION
 STONE & WEBSTER ENGINEERING CORPORATION

12177-ESK-5SWP01

DESIGN CONTROL ISSUE	REV	PGCC	REDRAWN	USED ON
1	1	1	1	3, 5 (ESK-5SWP07)
2	2	2	2	11, 13 (ESK-5SWP05)
3	3	3	3	14, 15 (ESK-5SWP03)

GE-NEED ✓ GE-1516

D