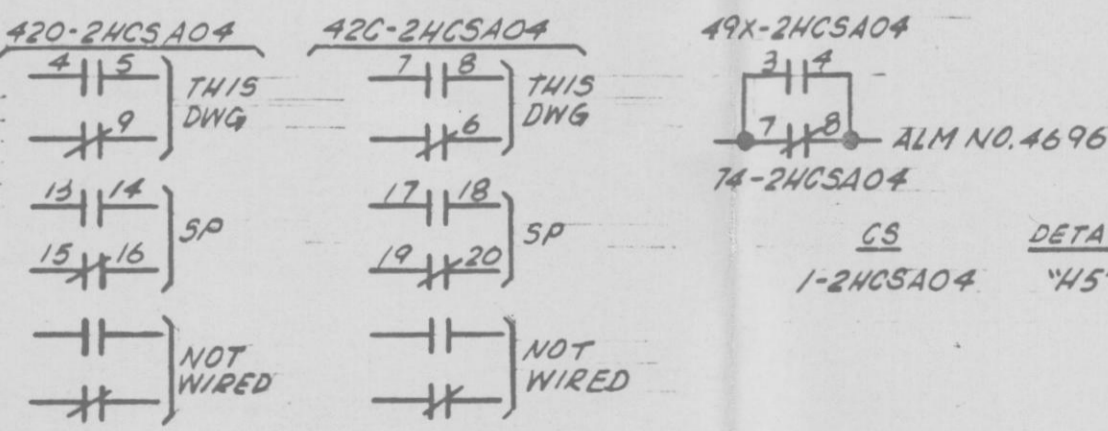


PRC APERTURE CARD

NOTES:
 1. VALVE LIMIT SWITCHES LOCATED ON V ACTUATOR. ALL OTHER EQPT LOCATED AT MCC UNLESS OTHERWISE NOTED.
 2. □ INDICATES SUPPR CHAM PEN.
 3. LOGIC DIAG LSK 27-13

NUCLEAR SAFETY RELATED
 QA CAT I

ROTOR	LIMIT SWITCH DEVELOPMENT				FUNCTION	
	33	VALVE POSITION		FULL		
	FULL OPEN	5% 95%	CLOSED	2HCS*MOV4A	2HCS*MOV4B	
1	1			SP	SP	
	2			GREEN LIGHT	GREEN LIGHT	
	3			OPEN LIMIT	OPEN LIMIT	
	4			BY-PASS	BY-PASS	
	5			SP	SP	
2	6			RED LIGHT	RED LIGHT	
	7			ESK-75C18	ESK-75C17	
	8			SP	SP	
	9					
3	10					
	11					
	12					
	13					
4	14					
	15			BY-PASS	BY-PASS	
	16			SP	SP	
TOR-QUE SW	17	CLOSING TORQUE SW INTERRUPTS CLOSING CIRCUIT IF MECHANICAL OVERLOAD OCCURS DURING CLOSING CYCLE				
	18	OPENING TORQUE SW INTERRUPTS OPENING CIRCUIT IF MECHANICAL OVERLOAD OCCURS DURING OPENING CYCLE				

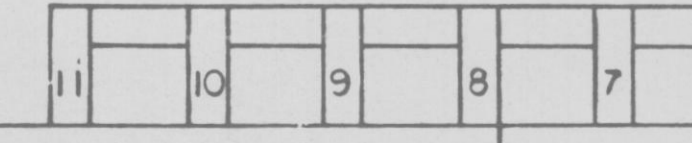


CS DETAIL ESK SPARES USED ON
 1-2HCSA04 "45" 3B 17, 18

REDRAWN
 DESIGN CONTROL
 ISSUE 2

AC ELEM DIAG-600V MCC CKTS
 DBA HYDROGEN RECOMBINER
 NINE MILE POINT NUCLEAR STATION-UNIT 2
 NIAGARA MOHAWK POWER CORPORATION

EGN-001, 3B, 3A
 002, 003, 007
 7/26/82
 12177-ESK-6HCS04 SH 1 OF 2



D