

Enclosure 7.b.1
of Attachment to
NLS2016076

GE Hitachi Nuclear Energy		Report No.	SW-Z4-2851-7
Cooper Nuclear Station		Date:	9/13/2016
Refueling Outage - RE29		UT /Grid Procedure:	CNS 3.10.1 rev.1
Page 1 of 4		Ultrasonic Thickness Measurement System	

Examiner: Robert Pinti <i>Robert Pinti</i>	Level: II	Instrument Type: Olympus 38 DL Plus
Examiner: N/A	Level: N/A	Instrument No: 161321906
Transducer Type: D-799	Serial #: 724769	Size: 0.312" Freq: 5 mhz Angle: 0°
Transducer Cable Type: Panametrics Length: 5'	Couplant: Ultragel II	Batch No: 10325
Calibration Block Type: C/S Step Wedge	Block Number: CAL-STEP-150	

SYSTEM CALIBRATION			
INSTRUMENT SETTINGS	Initial Cal. Time	Calibration Checks	Final Cal. Time
Coarse Range: 2.000"	Exam took 2 days, see Comments		
Gain: (db) 61	Calibrated Sweep Range = 0.100" Inches to 1.000" Inches		
	Thermometer: 130803613	Comp. Temp: 82°	Block Temp: 82°
	Component Examined/Location: SW-Z4-2851-7 / C-882-S		
	Component Type: PIPE	Plant System: SW	
Red=Tscr Wall - 0.001	W/O Number: 5120799	Material: A106 / A53	Surface: Prepped
Green=Tscr Wall to Tnom - 0.001	Nom. Pipe Size: 18.000"	Tnom: 0.438"	Grid Size: 6.0"
Black=Tnom to Tnom x 120%	Tscr. Wall: 0.303"	Min. Reading: 0.127"	Rows: 6
Blue=Tnom x 120% + 0.001	Avg. Reading: 0.356	Max. Reading: 0.418"	Cols: 10
Less than or = 0.302 0.303 to 0.437 0.438 to 0.526 Greater than or = 0.527			

X/Y Location: TDC




Total Dose per Crew	0.0 mr
Total Exam Points	60
Min. Reading Loc.	106
Velocity In/Out	2260
Note: Gridded and Examined looking Downstream in a Clockwise Direction	

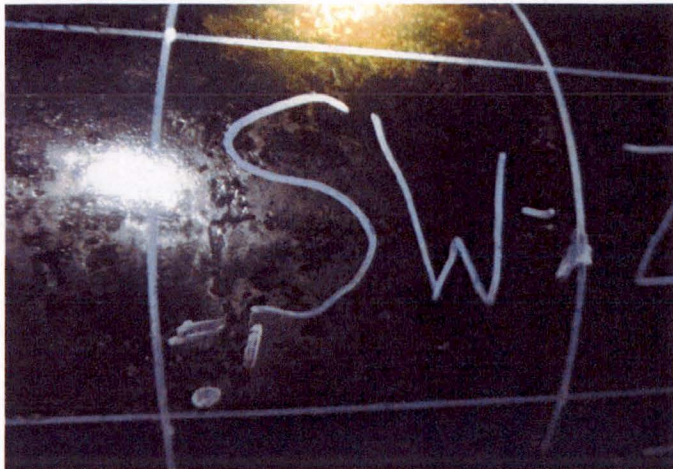
Section	Beginning Row	Ending Row	Weld 1		Weld 2	
Main	01	06	U/S	D/S	U/S	D/S
U/S Ext.	N/A	N/A	N/A	N/A	N/A	N/A
D/S Ext.	N/A	N/A	Weld 3		Weld 4	
Branch	N/A	N/A	U/S	D/S	U/S	D/S
Branch Ext.	N/A	N/A	N/A	N/A	N/A	N/A

COMMENTS:
 100% Scan of each grid, recorded lowest reading.
 Below-T-min readings recorded. See SDS Sheet.
 Exam took 2 days to complete, 09/12/2016 Cal Times: 1321 Cal In 1557 Cal Out
 09/13/2016 Cal Times: 0751 Cal In 0948 Cal Out

Reviewed by: Robert Scott Getz <i>Robert Scott Getz</i>	Level: II	Date: 9/13/2016
Utility Review: <i>Philip Leinin</i>	Level: N/A	Date: 9/13/2016

GE Hitachi Nuclear Energy		 HITACHI							File Name: SW-Z4-2851-7	
Cooper Nuclear Station									Date: 9/13/2016	
Refueling Outage RE29									Page 2 of 4	
Ultrasonic Thickness Measurement System										
	A	B	C	D	E	F	G	H	I	J
1	0.360	0.345	0.393	0.411	0.418	0.388	0.364	0.335	0.340	0.377
2	0.391	0.297	0.310	0.407	0.399	0.381	0.340	0.210	0.315	0.379
3	0.386	0.365	0.386	0.389	0.408	0.393	0.329	0.334	0.197	0.372
4	0.342	0.360	0.368	0.397	0.412	0.395	0.384	0.286	0.231	0.270
5	0.378	0.388	0.380	0.390	0.408	0.400	0.360	0.323	0.364	0.364
6	0.383	0.296	0.377	0.398	0.407	0.388	0.383	0.329	0.127	0.380
Examined by Robert Pinti <i>Robert Pinti</i>		Level II		Date 9/13/2016						
Examined by N/A		Level N/A		Date N/A						
Reviewed by: Robert Scott Getz <i>Robert Scott Getz</i>		Level II		Date 9/13/2016						

GE Hitachi Nuclear Energy	 HITACHI	Report No.	SW-Z4-2851-7
Cooper Nuclear Station		Date:	9/13/2016
Refueling Outage - RE29		UT /Grid Procedure:	CNS 3.10.1 rev.1
Page 3 of 4		Ultrasonic Thickness Supplemental Data Sheet	Component/Location



COMMENTS:

- #1 B02 reading 0.297" area 0.25", 6.5" from clamp, 11.75" from TDC clockwise with flow.
- #2 B06 reading 0.296 area 0.25", 32.0" from clamp, 10.5" from TDC clockwise with flow.
- #3 H02 reading 0.210" area 1.0" X 0.75", 8.25" from clamp, 50.0" from TDC clockwise with flow.
- #4 H04 reading 0.286 area 1.0" X 0.5", 25.5" from clamp, 53.0" from TDC clockwise with flow.

Examined by Robert Pinti <i>Robert Pinti</i>	Level II	Date	9/13/2016
Examined by N/A	Level N/A	Date	N/A
Reviewed by: Robert Scott Getz <i>Robert Scott Getz</i>	Level II	Date	9/13/2016

GE Hitachi Nuclear Energy	 HITACHI	Report No.	SW-Z4-2851-7
Cooper Nuclear Station		Date:	9/13/2016
Refueling Outage - RE29		UT /Grid Procedure:	CNS 3.10.1 rev.1
Page 4 of 4		Component/Location	SW-Z4-2851-7 / C-882-S
Ultrasonic Thickness Supplemental Data Sheet			



COMMENTS:

#5 I03 reading 0.197" area 1.25" X 0.75", 13.5" from clamp, 58.0" from TDC clockwise with flow.
 #6 I04 reading 0.231" area 1.25" X 0.5", 21.5" from clamp, 57.5" from TDC clockwise with flow.
 #7 I06 reading 0.127" area 1.5" X 1.25", 31.0" from clamp, 55.0" from TDC clockwise with flow.
 #8 J04 reading 0.270" area 0.25", 23.0" from clamp, 61.5" from TDC clockwise with flow.

Examined by Robert Pinti <i>Robert Pinti</i>	Level II	Date	9/13/2016
Examined by N/A	Level N/A	Date	N/A
Reviewed by: Robert Scott Getz <i>Robert Scott Getz</i>	Level II	Date	9/13/2016