

# TRANSPORTATION OF SPENT NUCLEAR FUEL

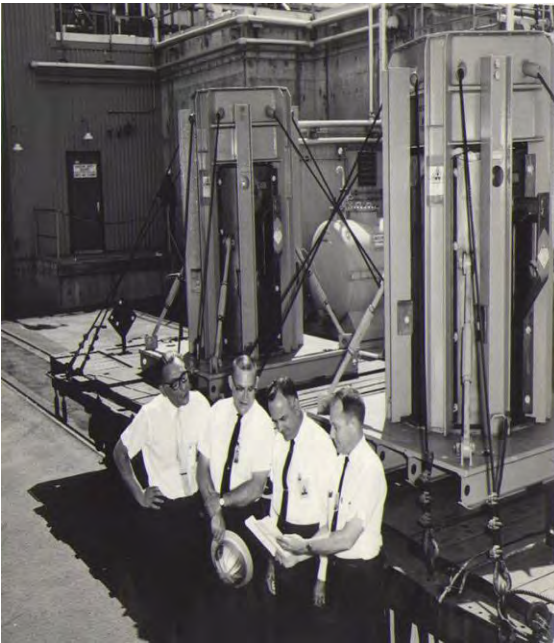
*NRC Regulatory Conference  
Division of Spent Fuel Management  
December 8, 2016*

Jack Edlow, President



# EDLOW INTERNATIONAL COMPANY

*59 Years of Excellence in the Shipment of Radioactive Cargo*



Sam Edlow and USAEC

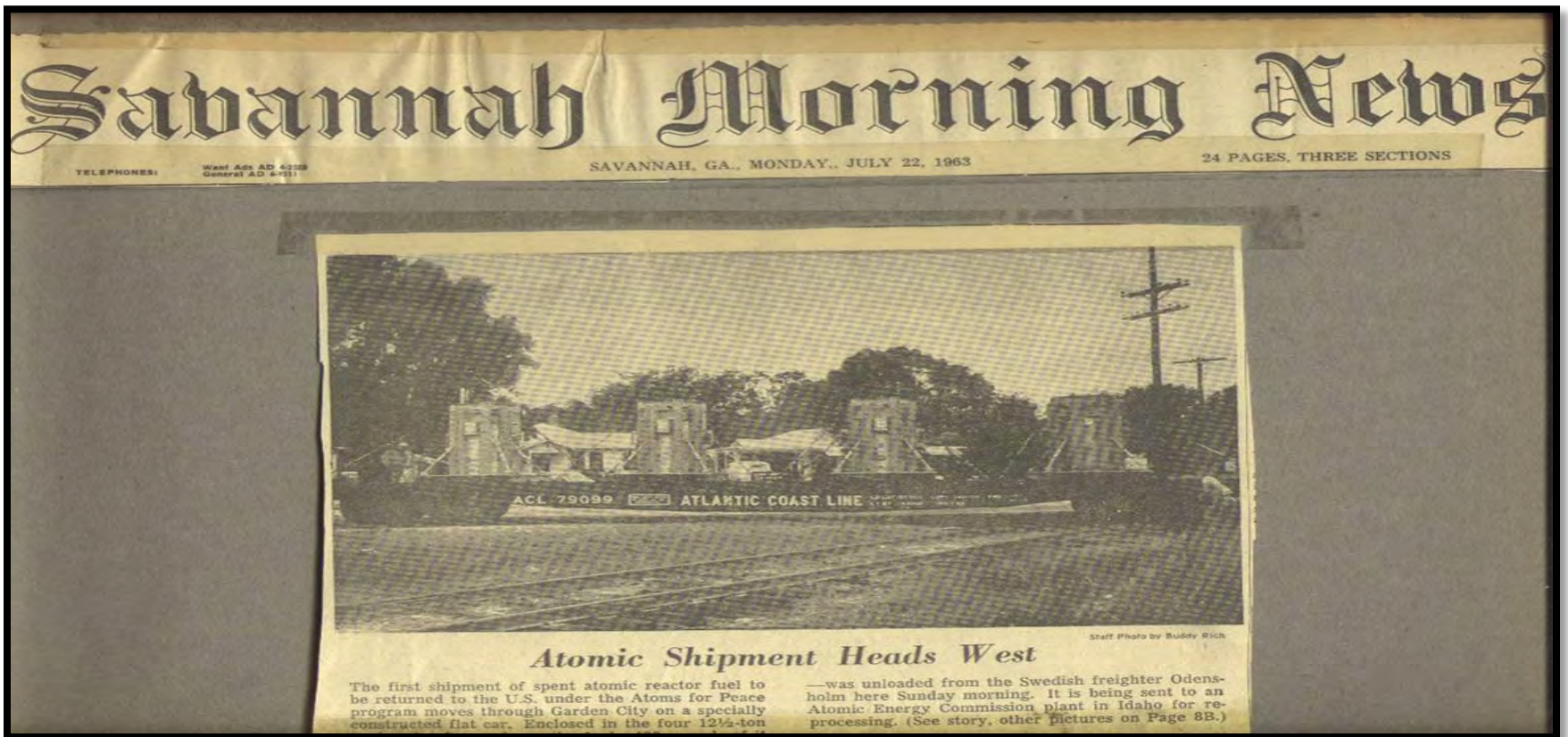


Shipment from Taiwan



SNF from Colombia

# OVER 50 YEARS OF SHIPMENTS



*First Shipment of Spent Reactor Fuel in 1963*

# SNF TRANSPORT BY RAIL



# SNF TRANSPORT BY RAIL



# SNF TRANSPORT BY ROAD



# SNF TRANSPORT BY SEA



# SNF TRANSPORT BY SEA



PNTL – Pacific Egret

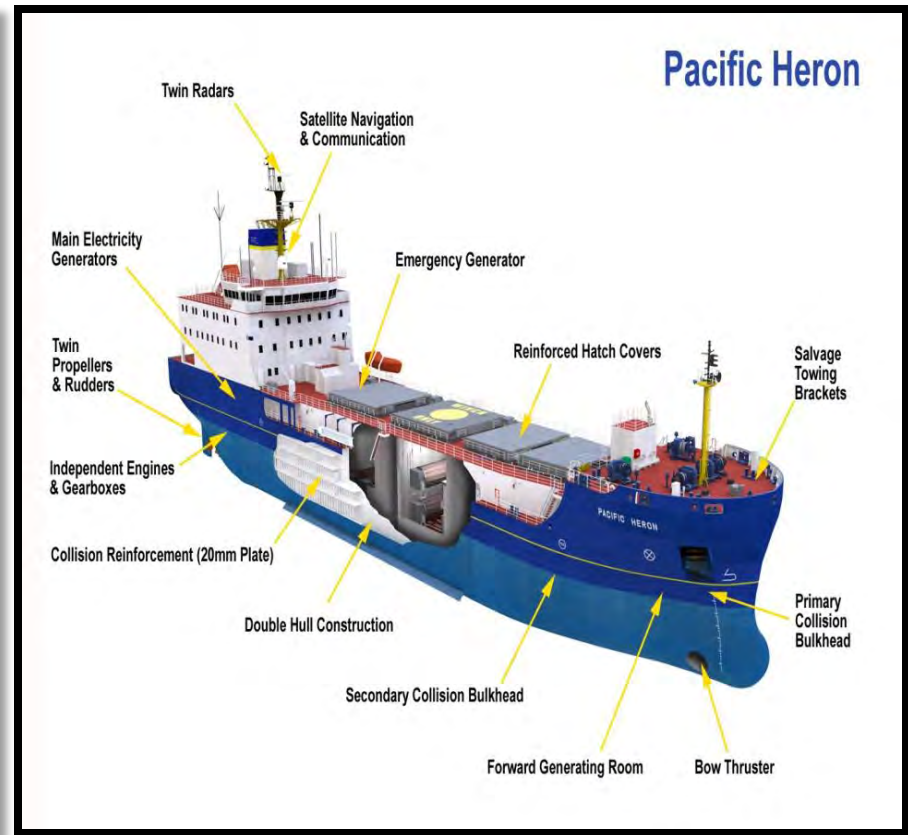


Diagram of PNTL Ship

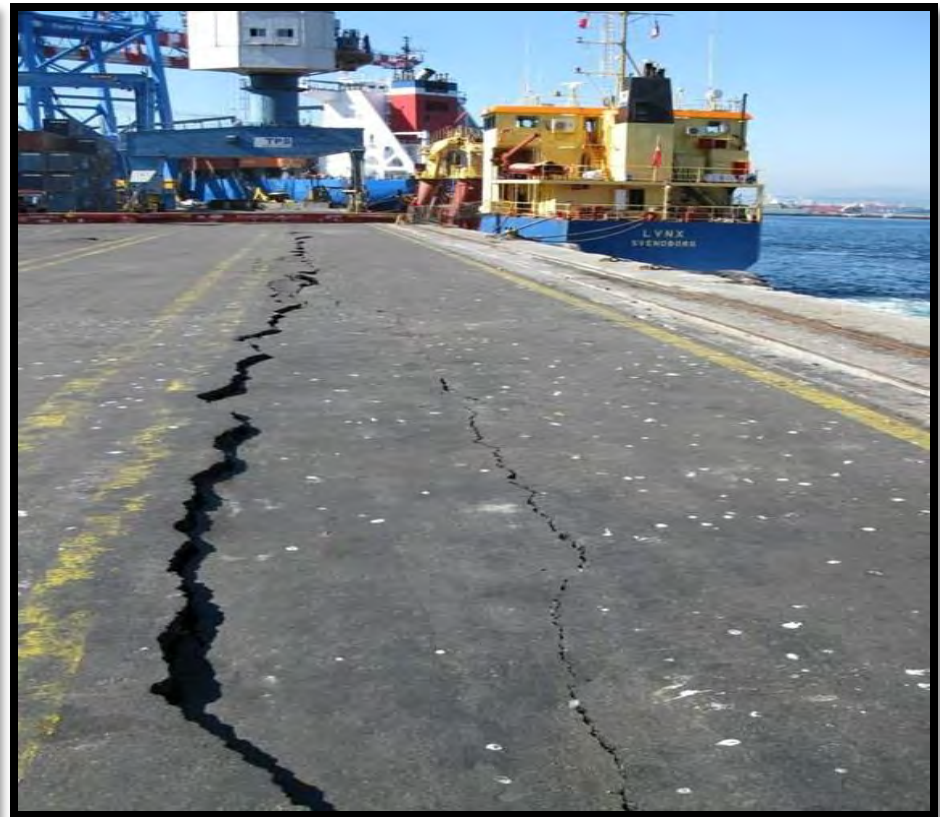
# SNF TRANSPORT BY AIR



# EMERGENCY PREPAREDNESS



Danger in Colombia



8.8 Earthquake in Chile

# TRANSPORTATION OF MTR FUEL



# LOADING OF CASK



# SHIP TO RAIL TRANSFER



*Picture courtesy of International Nuclear Services (UK)*



*Picture courtesy of Direct Rail Services, Ltd. (UK)*

# VIDEO OF CASK UNLOADING



*Picture/Video courtesy of International Nuclear Services (UK)*



**Edlow  
International  
Company**

***1666 Connecticut Avenue, NW  
Suite 201  
Washington, DC 20009  
USA***

***Tel: (202) 483 – 4959      Fax: (202) 483 – 4840***

***[www.edlow.com](http://www.edlow.com)***