

MONTHLY OPERATING REPORT FOR SEPTEMBER 1996

9610180188 961011
PDR ADOCK 05000275
R PDR



10-1-74

10-1-74

10-1-74

10-1-74

MONTHLY NARRATIVE REPORT
OF OPERATION
AND MAJOR MAINTENANCE EXPERIENCE

The monthly report describes the operating and major maintenance experience for Diablo Canyon Power Plant for the month of September 1996. This narrative report was prepared and submitted in accordance with Section 6.9.1.7 of the Units 1 and 2 Technical Specifications.

Narrative of Daily Significant Plant Events

September 1, 1996: Units 1 and 2 started the month in Mode 1 (Power Operation) at 100 percent power.

September 30, 1996: Units 1 and 2 ended the month in Mode 1 at 100 percent power.

Summary of Plant Operating Characteristics, Power Reductions, and Unit Shutdowns

Unit 1 operated this month with a unit availability factor of 100 percent and a unit capacity factor (using MDC Net) of 100.89 percent. Unit 1 did not reduce power by more than 20 percent for more than four hours this month.

Unit 2 operated this month with a unit availability factor of 100 percent and a unit capacity factor (using MDC Net) of 101.09 percent. Unit 2 did not reduce power by more than 20 percent for more than four hours this month.

Summary of Significant Safety-Related Maintenance

Unit 1:

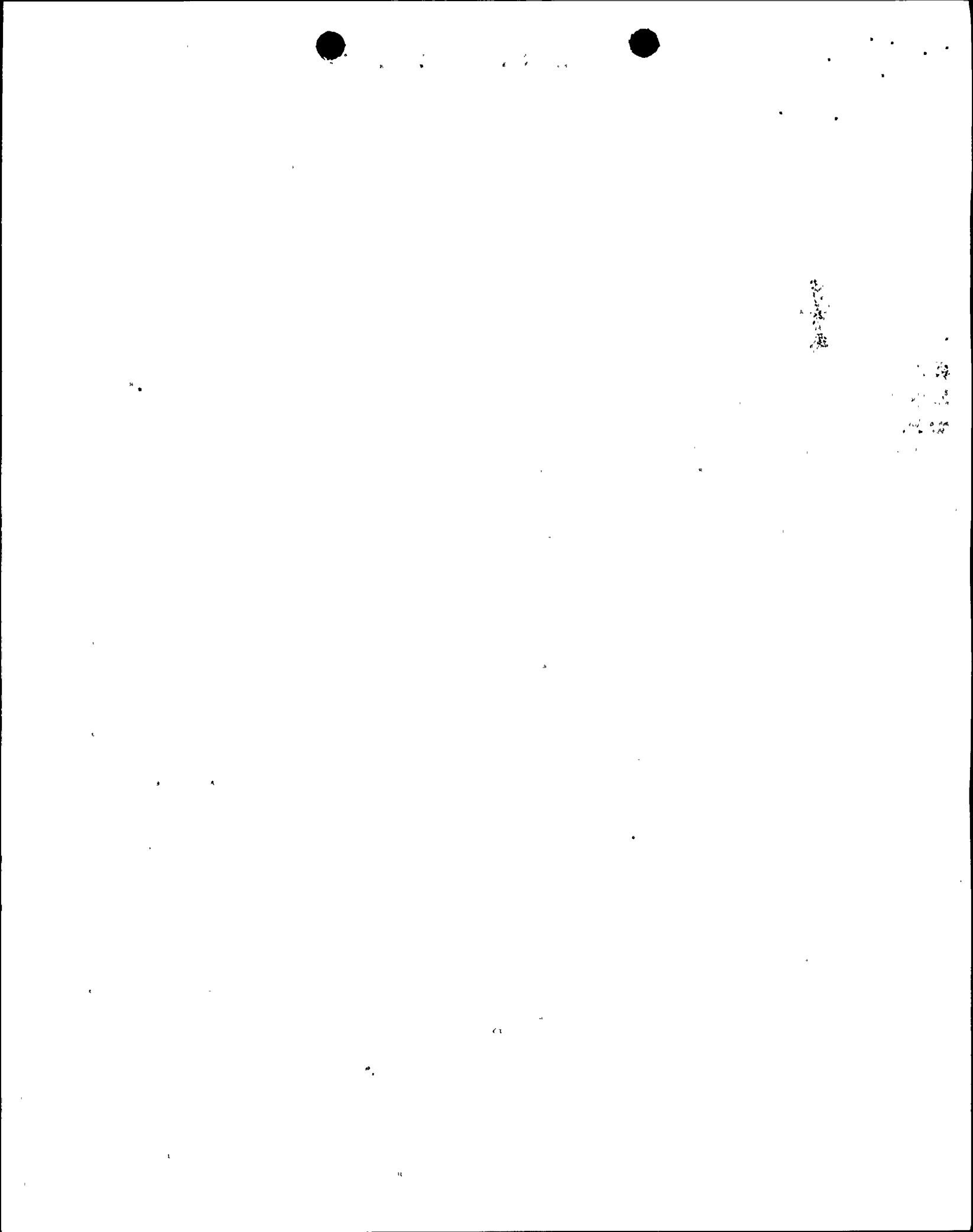
There was no significant maintenance on Unit 1 during the month of September 1996.

Unit 2:

There was no significant maintenance on Unit 2 during the month of September 1996.

Actuation of Steam Generator Safety or Pressurizer Power-Operated Relief Valves

There were no challenges to the steam generator safety or pressurizer power-operated relief valves.



OPERATING DATA REPORT

DOCKET NO.: 50-275
 UNIT: 1
 DATE: 10/11/96
 COMPLETED BY: T. Eubank/S. LaForce
 TELEPHONE: (805) 545-4867/4741

OPERATING STATUS

- | | | |
|-----|---|----------------------|
| 1. | Unit Name: | Diablo Canyon Unit 1 |
| 2. | Reporting Period: | September 1996 |
| 3. | Licensed Thermal Power (MWt): | 3338 |
| 4. | Nameplate Rating (Gross MWe): | 1137 |
| 5. | Design Electrical Rating (Net MWe): | 1086 |
| 6. | Maximum Dependable Capacity (Gross MWe): | 1124 |
| 7. | Maximum Dependable Capacity (Net MWe): | 1073.4 |
| 8. | If Changes Occur In Capacity Ratings (Items 3 Through 7) Since Last Report, Give Reasons: | N/A |
| 9. | Power Level To Which Restricted, If Any (Net MWe): | N/A |
| 10. | Reasons For Restrictions, If Any: | N/A |

		<u>This Month</u>	<u>YTD</u>	<u>Cumulative</u>
11.	Hours In Reporting Period:	720.0	6575.0	99957.3
12.	Number Of Hours Reactor Was Critical:	720.0	6321.2	84872.6
13.	Reactor Reserve Shutdown Hours:	0.0	0.0	0.0
14.	Hours Generator On-Line:	720.0	6303.3	83814.1
15.	Unit Reserve Shutdown Hours:	0.0	0.0	0.0
16.	Gross Thermal Energy Generated (MWH):	2402631	20497876	266807973
17.	Gross Electrical Energy Generated (MWH):	816200	6982200	89851332
18.	Net Electrical Energy Generated (MWH):	779726	6653204	85286655
19.	Unit Service Factor:	100.00	95.87	83.85
20.	Unit Availability Factor:	100.00	95.87	83.85
21.	Unit Capacity Factor (Using MDC Net):	100.89	94.27	79.49
22.	Unit Capacity Factor (Using DER Net):	99.72	93.18	78.57
23.	Unit Forced Outage Rate:	0.00	3.78	3.54
24.	Shutdowns Scheduled Over Next 6 Months (Type, Date, and Duration of Each):		N/A	
25.	If Shut Down At End Of Report Period, Estimate Date of Startup:		N/A	



1

AVERAGE DAILY UNIT POWER LEVEL

DOCKET NO.: 50-275
UNIT: 1
DATE: 10/11/96
COMPLETED BY: T. Eubank/S. LaForce
TELEPHONE: (805) 545-4867/4741

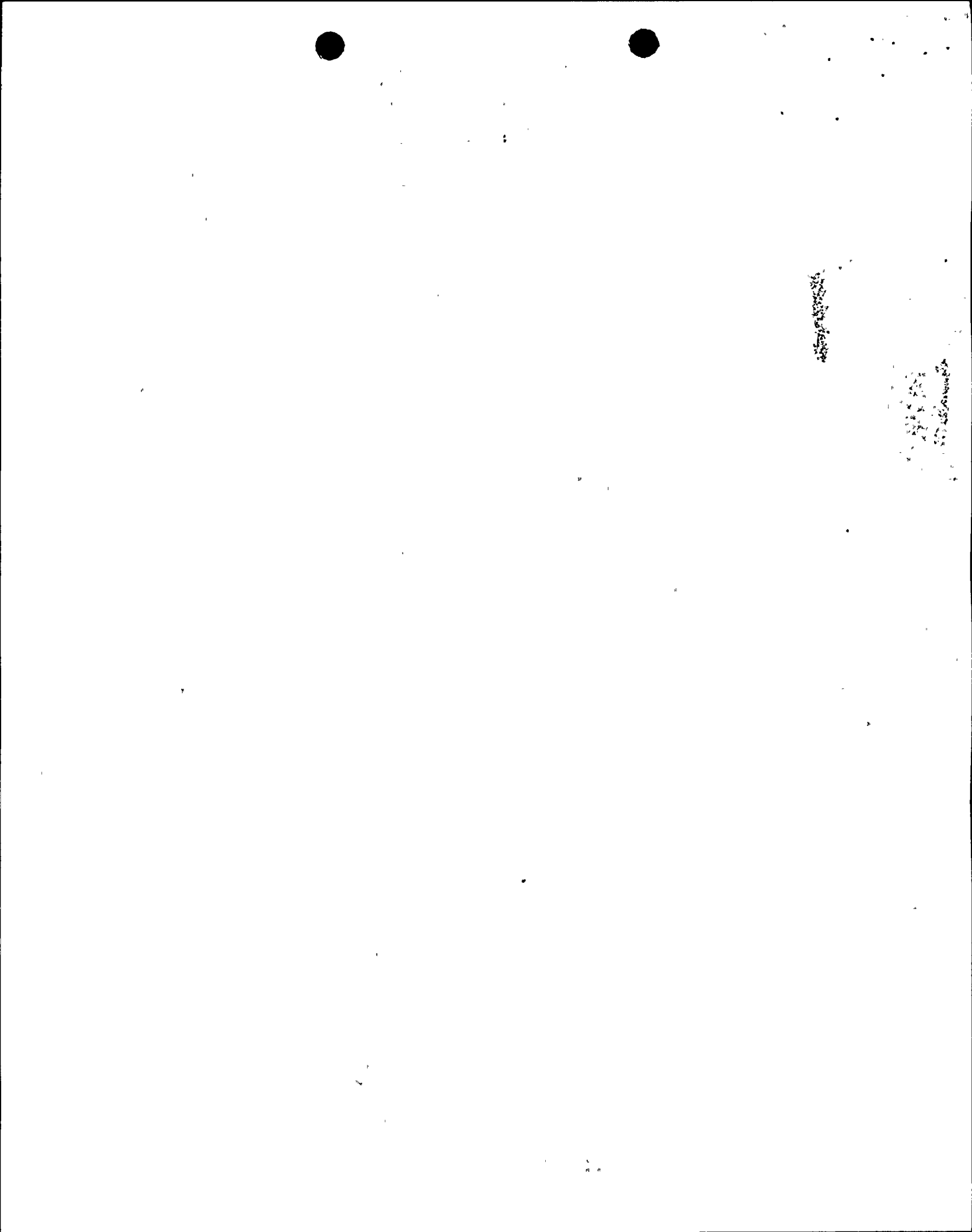
September 1996

DAY

AVERAGE DAILY POWER LEVEL
(MWe-Net)

1	1087
2	1083
3	1082
4	1083
5	1086
6	1083
7	1083
8	1087
9	1083
10	1083
11	1087
12	1082
13	1083
14	1087
15	1083
16	1087
17	1082
18	1082
19	1082
20	1083
21	1083
22	1083
23	1082
24	1074
25	1086
26	1078
27	1082
28	1079
29	1083
30	1079

The average monthly Electrical Power Level for September 1996 = 1082.95 MWe-Net



UNIT SHUTDOWNS AND POWER REDUCTIONS

DOCKET NO.: 50-275
 UNIT: 1
 DATE: 10/11/96
 COMPLETED BY: S. LaForce
 TELEPHONE: (805) 545-4741

REPORT MONTH: September 1996

NO.	DATE	TYPE ¹	DURATION (HOURS)	REASON ²	METHOD OF SHUTDOWN ³	LICENSEE EVENT REPORT	SYSTEM CODE ⁴	COMPONENT CODE ⁵	CAUSE & CORRECTIVE ACTION TO PREVENT RECURRENCE
None	N/A	N/A	N/A	N/A	N/A	N/A	N/A	N/A	N/A

1
 Type:
 F-Forced
 S-Scheduled

2
 Reason:
 A-Equipment Failure (Explain)
 B-Maintenance or Test
 C-Refueling
 D-Regulatory Restriction
 E-Operator Training & License Examination
 F- Administrative
 G-Operational Error (Explain)
 H-Other (Explain)

3
 Method:
 1-Manual
 2-Manual Scram
 3-Automatic Scram
 4-Continuation from
 previous month
 5-Power reduction
 6-Other

4
 EIS Systems List, Table 1

5
 IEEE Std. 803A-1983, "IEEE
 Recommended Practice for Unique
 Identification in Power Plants and
 Related Facilities - Table 2"

100-100000-100

100-100000-100

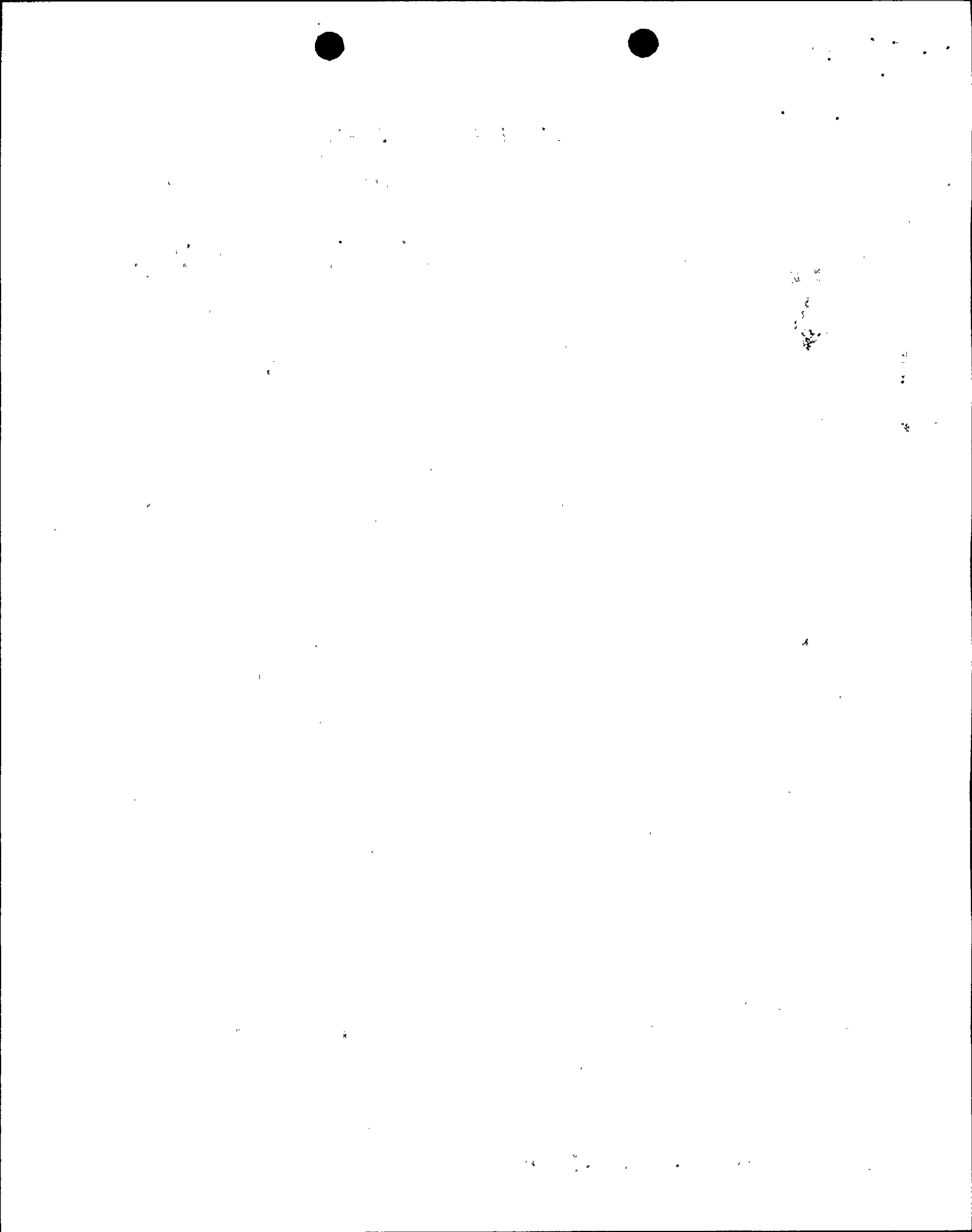
OPERATING DATA REPORT

DOCKET NO.: 50-323
 UNIT: 2
 DATE: 10/11/96
 COMPLETED BY: T. Eubank/S. LaForce
 TELEPHONE: (805) 545-4867/4741

OPERATING STATUS

- | | | |
|-----|--|----------------------|
| 1. | Unit Name: | Diablo Canyon Unit 2 |
| 2. | Reporting Period: | September 1996 |
| 3. | Licensed Thermal Power (MWt): | 3411 |
| 4. | Nameplate Rating (Gross MWe): | 1164 |
| 5. | Design Electrical Rating (Net MWe): | 1119 |
| 6. | Maximum Dependable Capacity (Gross MWe): | 1137 |
| 7. | Maximum Dependable Capacity (Net MWe): | 1087 |
| 8. | If Changes Occur In Capacity Ratings (Items
3 Through 7) Since Last Report, Give Reasons: | N/A |
| 9. | Power Level To Which Restricted, If Any (Net MWe): | N/A |
| 10. | Reasons For Restrictions, If Any: | N/A |

		<u>This Month</u>	<u>YTD</u>	<u>Cumulative</u>
11.	Hours In Reporting Period:	720.0	6575.0	92516.0
12.	Number Of Hours Reactor Was Critical:	720.0	5381.5	79653.7
13.	Reactor Reserve Shutdown Hours:	0.0	0.0	0.0
14.	Hours Generator On-Line:	720.0	5251.8	78453.3
15.	Unit Reserve Shutdown Hours:	0.0	0.0	0.0
16.	Gross Thermal Energy Generated (MWH):	2455552	17446807	258021789
17.	Gross Electrical Energy Generated (MWH):	826590	5804732	85855462
18.	Net Electrical Energy Generated (MWH):	791173	5521490	81660384
19.	Unit Service Factor:	100.00	79.88	84.80
20.	Unit Availability Factor:	100.00	79.88	84.80
21.	Unit Capacity Factor (Using MDC Net):	101.09	77.26	81.30
22.	Unit Capacity Factor (Using DER Net):	98.20	75.05	78.88
23.	Unit Forced Outage Rate:	0.00	3.02	4.14
24.	Shutdowns Scheduled Over Next 6 Months (Type, Date, And Duration Of Each):		N/A	
25.	If Shut Down At End Of Report Period, Estimate Date of Startup:		N/A	



AVERAGE DAILY UNIT POWER LEVEL

DOCKET NO.: 50-323
UNIT: 2
DATE: 10/11/96
COMPLETED BY: T. Eubank/S. LaForce
TELEPHONE: (805) 545-4867/4997

September 1996	DAY	AVERAGE DAILY POWER LEVEL (MWe-Net)
	1	1097
	2	1096
	3	1095
	4	1097
	5	1100
	6	1099
	7	1101
	8	1102
	9	1100
	10	1101
	11	1102
	12	1101
	13	1099
	14	1101
	15	1102
	16	1100
	17	1102
	18	1099
	19	1101
	20	1100
	21	1099
	22	1098
	23	1097
	24	1095
	25	1097
	26	1096
	27	1096
	28	1096
	29	1097
	30	1099

The average monthly Electrical Power Level for September 1996 = 1098.85 MWe-Net



11/11/11

11/11/11

UNIT SHUTDOWNS AND POWER REDUCTIONS

DOCKET NO.: 50-323
 UNIT: 2
 DATE: 10/11/96
 COMPLETED BY: S. D. LaForce
 TELEPHONE: (805) 545-4741

REPORT MONTH: September 1996

NO.	DATE	TYPE ¹	DURATION (HOURS)	REASON ²	METHOD OF SHUTDOWN ³	LICENSEE EVENT REPORT	SYSTEM CODE ⁴	COMPONENT CODE ⁵	CAUSE & CORRECTIVE ACTION TO PREVENT RECURRENCE
None	N/A	N/A	N/A	N/A	N/A	N/A	N/A	N/A	N/A

1
 Type:
 F-Forced
 S-Scheduled

2
 Reason:
 A-Equipment Failure (Explain)
 B-Maintenance or Test
 C-Refueling
 D-Regulatory Restriction
 E-Operator Training & License Examination
 F- Administrative
 G-Operational Error (Explain)
 H-Other (Explain)

3
 Method:
 1-Manual
 2-Manual Scram
 3-Automatic Scram
 4-Continuation from
 previous month
 5-Power reduction
 6-Other

4
 EIS Systems List, Table 1

5
 IEEE Std. 803A-1983, "IEEE
 Recommended Practice for Unique
 Identification in Power Plants and
 Related Facilities - Table 2"



11
12
13



12
13
14
15

REFUELING INFORMATION REQUEST

DOCKET NO.: 50-323
UNIT: 2
DATE: 10/11/96
COMPLETED BY: D. Farrer/S. LaForce
TELEPHONE: (805) 545-4438/4741

1. Name of facility: Diablo Canyon Unit 2
2. Scheduled date for next refueling shutdown: January 24, 1998
3. Scheduled date for restart following refueling: February 28, 1998
4. Will refueling or resumption of operation thereafter require a technical specification change or other license amendment? If answer is yes, what, in general, will there be? If answer is no, has the reload fuel design and core configuration been reviewed by your Plant Staff Review Committee (PSRC) to determine whether any unreviewed safety questions are associated with the core reload (Ref. 10 CFR Section 50.59)? If no such review has taken place, when is it scheduled?

No. The PSRC reviewed and approved the Cycle 8 core reload on May 10, 1996.

5. Scheduled date(s) for submitting proposed licensing action and supporting information: N/A
6. Important licensing considerations associated with refueling, e.g., new or different fuel design or supplier, unreviewed design or performance analysis methods, significant changes in fuel design, new operating procedures: N/A
7. As of September 30, 1996, the number of fuel assemblies (a) in the core and (b) in the spent fuel storage pool were:

(a)	193	(b)	580
-----	-----	-----	-----
8. The present licensed spent fuel pool storage capacity and the size of any increase in licensed storage capacity that has been requested or is planned, in number of fuel assemblies:

Present	1324	Increase size by	0
---------	------	------------------	---
9. The projected date of the last refueling that can be discharged to the spent fuel pool assuming the present licensed capacity: 2006 (loss of full core offload capability).



Small, faint, illegible marks or characters in the top right corner.

Small, faint, illegible marks or characters in the middle right area.

Small, faint, illegible marks or characters at the bottom center.