

ACCELERATED DISTRIBUTION DEMONSTRATION SYSTEM

REGULATORY INFORMATION DISTRIBUTION SYSTEM (RIDS)

ACCESSION NBR: 8904270025 DOC. DATE: 89/04/19 NOTARIZED: NO DOCKET #
 FACIL: 50-275 Diablo Canyon Nuclear Power Plant, Unit 1, Pacific Ga 05000275
 50-323 Diablo Canyon Nuclear Power Plant, Unit 2, Pacific Ga 05000323

AUTH. NAME AUTHOR AFFILIATION
 SHIFFER, J.D. Pacific Gas & Electric Co.
 RECIPIENT NAME RECIPIENT AFFILIATION
 Document Control Branch (Document Control Desk)

SUBJECT: Responds to NRC request for status of implementation of TMI action plan items.

DISTRIBUTION CODE: A046D COPIES RECEIVED: LTR 1 ENCL 1 SIZE: 21
 TITLE: OR Submittal: TMI Action Plan Rgmt NUREG-0737 & NUREG-0660

NOTES:

	RECIPIENT		COPIES		RECIPIENT		COPIES	
	ID CODE/NAME		LTTR	ENCL	ID CODE/NAME		LTTR	ENCL
	PD5 LA		1	0	PD5 PD		5	5
	ROOD, H		1	1				
INTERNAL:	ACRS		6	6	AEOD/DSP/TPAB		1	1
	NRR/DEST/ADS 7E		1	0	NRR/DEST/MEB 9H		1	1
	NRR/DREP/EPB 10		1	1	NRR/DREP/RPB 10		1	1
	NUDOCS-ABSTRACT		1	1	OC/LEMB		1	0
	OGC/HDS2		1	0	REG FILE 01		1	1
	RES/DSIR/EIB		1	1	RES/DSR DEPY		1	1
EXTERNAL:	LPDR		1	1	NRC PDR		1	1
	NSIC		1	1				

NOTE TO ALL "RIDS" RECIPIENTS:

PLEASE HELP US TO REDUCE WASTE! CONTACT THE DOCUMENT CONTROL DESK, ROOM P1-37 (EXT. 20079) TO ELIMINATE YOUR NAME FROM DISTRIBUTION LISTS FOR DOCUMENTS YOU DON'T NEED!

TOTAL NUMBER OF COPIES REQUIRED: LTTR 27 ENCL 23

M/A 4
 CC

R
I
D
S
/
A
D
D
S

R
I
D
S
/
A
D
D
S

24

1. The first part of the document is a list of names and addresses.

2. The second part of the document is a list of names and addresses.

Pacific Gas and Electric Company

77 Beale Street
San Francisco, CA 94106
415/973-4684
TWX 910-372-6587

James D. Shiffer
Vice President
Nuclear Power Generation

April 19, 1989

PG&E Letter No. DCL-89-103



U.S. Nuclear Regulatory Commission
ATTN: Document Control Desk
Washington, D.C. 20555

Re: Docket No. 50-275, OL-DPR-80
Docket No. 50-323, OL-DPR-82
Diablo Canyon Units 1 and 2
Response to NRC Request for Status of Implementation of TMI
Action Plan Items

Gentlemen:

NRC letter dated April 14, 1989, requested that PG&E perform a prompt review and report on the status of implementation of TMI Action Plan Items at Diablo Canyon Power Plant. PG&E responded in an April 18, 1989, letter which documented the results of our review at that time.

PG&E has completed the review of the few remaining items and verified documentation for all TMI Action Plan Items. The enclosure provides the status of each item and supersedes Enclosure 2 of PG&E's April 18, 1989, letter. As stated in the April 18, 1989, letter, only one issue, I.D.1, Control Room Design Review, remains outstanding because NRC approval of PG&E letter DCL-89-003, dated January 5, 1989, has not occurred.

I certify that the information supplied in this document is, to the best of my knowledge and belief, true, accurate, and complete.

Kindly acknowledge receipt of this material on the enclosed copy of this letter and return it in the enclosed addressed envelope.

Sincerely,

A handwritten signature in cursive script, appearing to read 'J. D. Shiffer'. The signature is written in dark ink and is positioned above the printed name.

J. D. Shiffer

cc: J. B. Martin
M. M. Mendonca
P. P. Narbut
H. Rood
B. H. Vogler
CPUC
Diablo Distribution

Enclosure

2655S/0068K/DS/1119

8904270025 890419
PDR ADOCK 05000275
P PDC

A046
11

ENCLOSURE

DIABLO CANYON POWER PLANT
IMPLEMENTATION STATUS OF THE ACTION PLAN ITEMS

Explanatory Notes

1. Status dates refer to the date of the closure reference, which is the first document identified in parentheses. Additional supplemental references are also shown in parentheses without dates.
2. The status applies to both units, unless specified by U1 (Unit 1) or U2 (Unit 2).
3. Personnel training has been accomplished for all completed items at the time.



11/11/11

11/11/11

11/11/11

DIABLO CANYON POWER PLANT
IMPLEMENTATION STATUS OF TMI ACTION PLAN ITEMS

<u>ISSUE NUMBER</u>	<u>ISSUE TITLE</u>	<u>STATUS</u>
I.A.1.1.1	SHIFT TECHNICAL ADVISOR - ON DUTY	C - 4/85 (SSER 31 p. 4-31) (IR 50-275/81-02) (IR 50-323/84-26)
I.A.1.1.2	SHIFT TECHNICAL ADVISOR - TECH SPECS	C - 4/85 (SSER 31 p. 4-31) (IR 50-275/81-02) (IR 50-323/84-26) (TS Table 6.2-1 and Section 6.2.4)
I.A.1.1.3	SHIFT TECHNICAL ADVISOR - TRAINED PER LL CAT B	C - 4/85 (SSER 31 p. 4-31) (IR 50-275/81-02) (IR 50-323/84-26)
I.A.1.1.4	SHIFT TECHNICAL ADVISOR - DESCRIBE LONG TERM PROGRAM	C - 4/85 (SSER 31 p. 4-31) (IR 50-275/81-02) (IR 50-323/84-26)
I.A.1.2	SHIFT SUPERVISOR RESPONSIBILITIES	C - 8/80 (SSER 10 p. I.A-4) (IR 50-275/81-08) (IR 50-323/84-26)
I.A.1.3.1	SHIFT MANNING - LIMIT OVERTIMES	C - 3/81 (SSER 12 p. I-6) (IR 50-275/81-02) (IR 50-323/84-26)
I.A.1.3.2	SHIFT MANNING - MIN SHIFT CREW	C - 3/81 (SSER 12 p. I-6) (IR 50-275/81-02) (IR 50-323/84-26)
I.A.2.1.1	IMMEDIATE UPGRADING OF RD & SRO TRAINING AND QUAL. - SRO EXPER	C - 3/81 (SSER 12 p. I-7) (IR 50-275/81-19) (IR 50-323/84-26)
I.A.2.1.2	IMMEDIATE UPGRADING OF RO & SRO TRAINING AND QUAL. - SRO'S BE RO'S 1YR	C - 3/81 (SSER 12 p. I-7) (IR 50-275/81-19) (IR 50-323/84-26)



12

12
13
14
15
16
17
18
19
20
21
22
23
24
25
26
27
28
29
30
31
32
33
34
35
36
37
38
39
40
41
42
43
44
45
46
47
48
49
50
51
52
53
54
55
56
57
58
59
60
61
62
63
64
65
66
67
68
69
70
71
72
73
74
75
76
77
78
79
80
81
82
83
84
85
86
87
88
89
90
91
92
93
94
95
96
97
98
99
100

DIABLO CANYON POWER PLANT
IMPLEMENTATION STATUS OF THE ACTION PLAN ITEMS

<u>ISSUE NUMBER</u>	<u>ISSUE TITLE</u>	<u>STATUS</u>
I.A.2.1.3	IMMEDIATE UPGRADING OF RD & SRO TRAINING AND QUAL. - 3 MO. TRAINING	C - 3/81 (SSER 12 p. I-7) (IR 50-275/81-19) (IR 50-323/84-26)
I.A.2.1.4	IMMEDIATE UPGRADING OF RD & SRO TRAINING AND QUAL. -- MODIFY TRAINING	C - 3/81 (SSER 12 p. I-7) (IR 50-275/81-19) (IR 50-323/84-26)
I.A.2.1.5	IMMEDIATE UPGRADING OF RD & SRO TRAINING AND QUAL. - FACILITY CERTIF	C - 3/81 (SSER 12 p. I-7) (IR 50-275/81-19) (IR 50-323/84-26)
I.A.2.3	ADMINISTRATION OF TRAINING PROGRAMS	C - 3/81 (SSER 12 p. I-7) (IR 50-275/81-19) (IR 50-323/81-13)
I.A.3.1.1	REVISE SCOPE & CRITERIA FOR LICENSING EXAMS - INCREASE SCOPE	C - 3/81 (SSER 12 p. I-8) (IR 50-323/81-13)
I.A.3.1.2	REVISE SCOPE & CRITERIA FOR LICENSING EXAMS - INCREASE PASSING GRADE	C - 3/81 (SSER 12 p. I-8) (IR 50-323/81-13)
I.A.3.1.3.A	REVISE SCOPE & CRIT. FOR LIC. EXAMS - SIMULATOR PLANTS WITH SIMULATORS	C - 7/84 (Simulator installed at DCP)
I.A.3.1.3.B	REVISE SCOPE & CRIT. FOR LIC. EXAMS - SIMULATOR -- OTHER PLANTS	C - 3/81 (SSER 12 p. I-8) (IR 50-323/81-13)

10.00

10.00

10.00

10.00

10.00

10.00

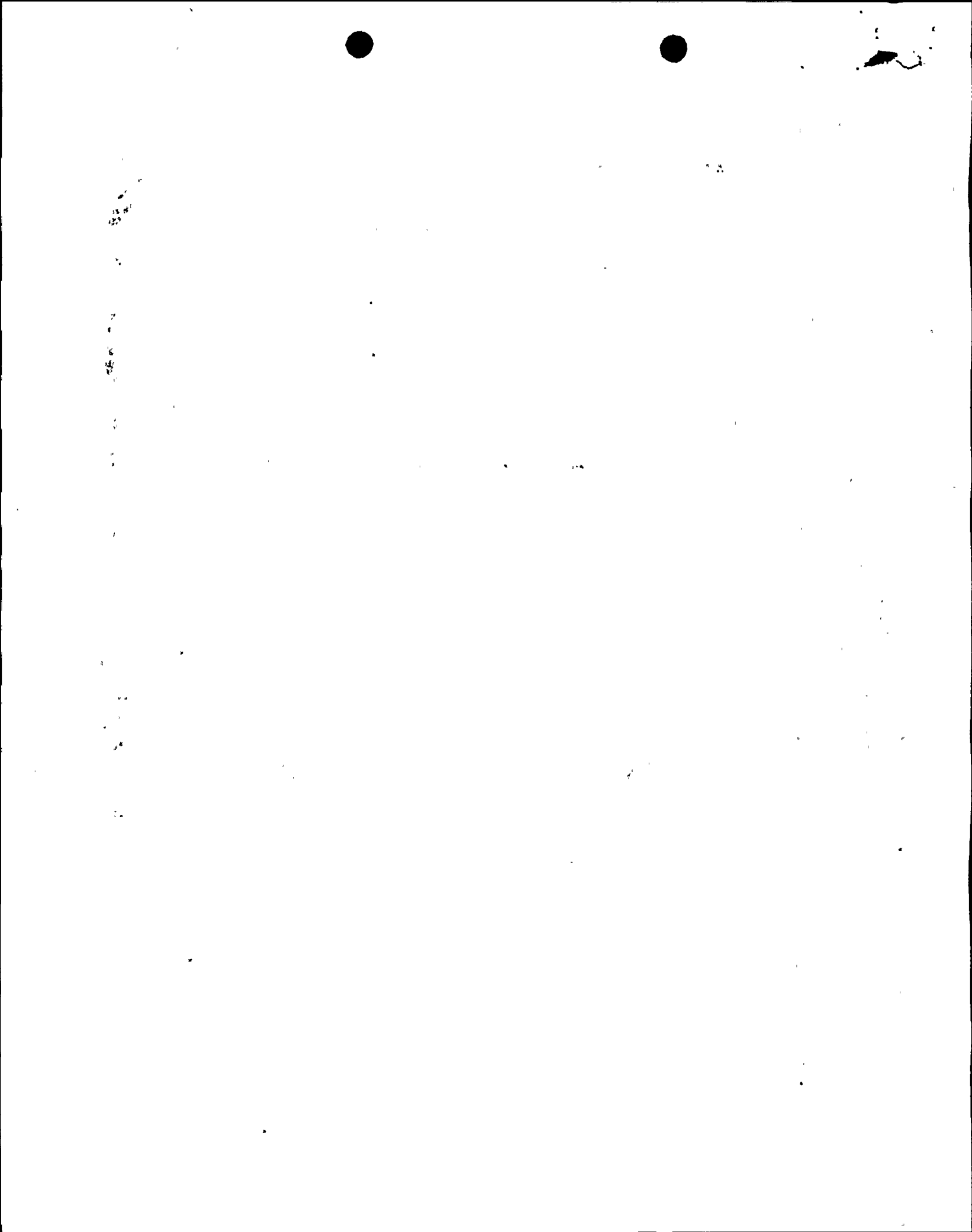
10.00

10.00

10.00

DIABLO CANYON POWER PLANT
IMPLEMENTATION STATUS OF TMI ACTION PLAN ITEMS

ISSUE NUMBER	ISSUE TITLE	STATUS
I.B.1.2	EVALUATION OF ORGANIZATION & MANAGEMENT OTHER PLANTS	C - 3/81 (SSER 12 p. I-15) (SSER 31 p. 4-32) (IR 50-323/84-26) (IR 50-275/81-08)
I.C.1.1	SHORT-TERM ACCIDENT & PROCEDURES REV. - SB LOCA	C - 3/26/85 (IR 50-275/81-24) (IR 50-323/85-23)
I.C.1.2.A	SHORT-TERM ACCID. & PROCEDURES REV. - INADEQ. CORE COOL REANAL. GUIDELINES	C - 3/26/85 (IR 50-275/81-24) (IR 50-323/85-23)
I.C.1.2.B	SHORT-TERM ACCID. & PROCEDURES REV. - INADEQ. CORE COOL REANAL. PROCEDURES	C - 3/26/85 (IR 50-275/81-24) (IR 50-323/85-23)
I.C.1.3.A	SHORT-TERM ACCID & PROCEDURES REV. - TRANSIENTS & ACCDTS. REANAL GUIDELINES (PRO. GEN PAC)	C - 3/26/85 (IR 50-275/81-24) (IR 50-323/85-23)
I.C.1.3.B	SHORT-TERM ACCID & PROCEDURES REV. - TRANSIENTS & ACCDRS. REVISE PROCEDURES (UPGRADED EOPS)	C - 3/26/85 (IR 50-275/81-24) (IR 50-323/85-23)
I.C.2	SHIFT & RELIEF TURNOVER PROCEDURES	C - 5/5/81 (U1) (IR 50-275/81-08) C - 11/26/84 (U2) (IR 50-323/84-26)
I.C.3	SHIFT-SUPERVISOR RESPONSIBILITY	C - 5/5/81 (U1) (IR 50-275/81-08) C - 11/26/84 (U2) (IR 50-323/84-26)



DIABLO CANYON POWER PLANT
IMPLEMENTATION STATUS OF THE ACTION PLAN ITEMS

ISSUE NUMBER	ISSUE TITLE	STATUS	
I.C.4	CONTROL-ROOM ACCESS	C - 5/5/81 (U1) C - 11/26/84 (U2)	(IR 50-275/81-08) (IR 50-323/84-26)
I.C.5	FEEDBACK OF OPERATING EXPERIENCE	C - 5/5/81 (U1) C - 11/26/84 (U2)	(IR 50-275/81-08) (IR 50-323/84-26)
I.C.6	VERIFY CORRECT PERFORMANCE OF OPERATING ACTIVITIES	C - 4/85 (SSER 31 p. 4-24)	(IR 50-275/81-13)
I.C.7.1	NSSS VENDOR REV. OF PROC - LOW POWER TEST PROGRAM	C - 4/12/85 (U2) C - 1/4/85 (U1)	(IR 50-232/85-08) (IR 50-275/84-43)
I.C.7.2	NSSS VENDOR REV. OF PROC - POWER ASCENSION & EMER. PROCS	C - 4/12/85 (U2) C - 6/27/84 (U1) C - 4/81 (SSER 14 p. 2-2)	(IR 50-323/85-08) (IR 50-275/84-10)
I.C.8	PILOT MDM OF SELECTED EMERGENCY PROC FOR NTOLS	C - 12/9/80 (U1) C - 8/29/85 (U2)	(IR 50-275/80-21) (IR 50-323/85-23)
I.D.1	CONTROL-ROOM DESIGN REVIEWS (ENTER DATA FOR MPA F008 & MPA F-071)	O - Unit 1 and 2 NRC Letter of 8/19/88 requested additional information. PG&E Letter DCL-89-003, dated 1/5/89 provided requested information. Waiting for completion of NRC review and issuance of SER.	
I.D.2.1	PLANT SAFETY PARAMETER DISPLAY CONSOLE - DESCRIPTION	C - 6/27/84 (U1) C - 4/16/85 (U2)	(IR 50-275-84/10) (IR 50-323/85-02)
I.D.2.2	PLANT-SAFETY PARAMETER DISPLAY CONSOLE - INSTALLED	C - 6/27/84 (U1) C - 4/16/85 (U2)	(IR 50-275-84/10) (IR 50-323/85-02)

12

DIABLO CANYON POWER PLANT
IMPLEMENTATION STATUS OF THE ACTION PLAN ITEMS

<u>ISSUE NUMBER</u>	<u>ISSUE TITLE</u>	<u>STATUS</u>
I.D.2.3	PLANT-SAFETY PARAMETER DISPLAY CONSOLE - FULLY IMPLEMENTED	C - 6/27/84 (U1) (IR 50-275-84/10) C - 4/16/85 (U2) (IR 50-323/85-02)
I.G.1.1	TRAINING DURING LOW-POWER TESTING - PROPOSE TESTS	C - 11/26/84 (IR 50-323/84-26) (SSER 31 p. 4-5)
I.G.1.2	TRAINING DURING LOW-POWER TESTING - SUBMIT ANAL. & PROCS	C - 11/26/84 (IR 50-323/84-26) (SSER 31 p. 4-5)
I.G.1.3	TRAINING DURING LOW-POWER TESTING - TRAINING RESULTS	C - 11/26/84 (IR 50-323/84-26) (SSER 31 p. 4-5)
II.B.1.1	REACTOR-COOLANT SYSTEM VENTS - DESIGN VENTS	C - 2/26/80 (PG&E letter to NRC) (SSER 14 p. 2-16)
II.B.1.2	REACTOR-COOLANT SYSTEM VENTS - INSTALL VENTS (LL CAT B)	C - 7/11/84 (IR 50-275/84-13) (IR 50-323/84-05)
II.B.1.3	REACTOR-COOLANT SYSTEM VENTS - PROCEDURES	C - 11/26/84 (U2) (IR 50-323/84-26) C - 8/20/84 (U1) (EP OP-6) (EP OP-7)
II.B.2.1	PLANT SHIELDING - REVIEW DESIGNS	C - 7/12/84 (DCL-84-260) (SSER 31 p. 4-29) (IR 50-275/83-19; 50-323/83-15)



1949 10 24

4 22

1

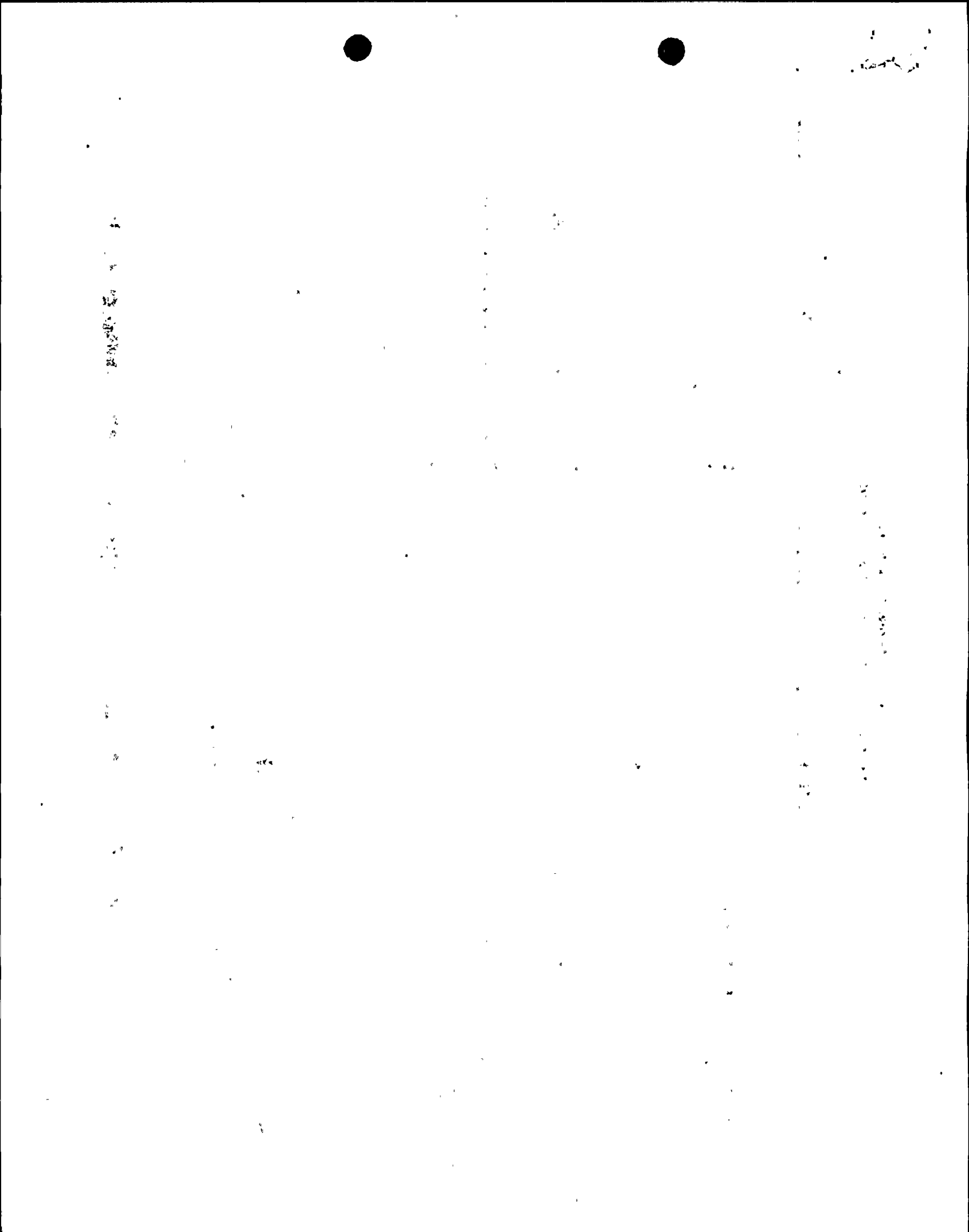
1

1

1

DIABLO CANYON POWER PLANT
IMPLEMENTATION STATUS OF TMI ACTION PLAN ITEMS

<u>ISSUE NUMBER</u>	<u>ISSUE TITLE</u>	<u>STATUS</u>
II.B.2.2	PLANT SHIELDING - CORRECTIVE ACTIONS TO ASSURE ACCESS	C - 7/12/84 (DCL-84-260) (SSER 31 p. 4-29) (IR 50-275/83-19; 50-323/83-15)
II.B.2.3	PLANT SHIELDING - PLANT MODIFICATIONS (LL CAT B)	C - 7/12/84 (DCL-84-260) (SSER 31 p. 4-29) (IR 50-275/83-19; 50-323/83-15)
II.B.2.4	PLANT SHIELDING - EQUIPMENT QUALIFICATION - NOT TRACKED AS A TMI ACTION ITEM	C - 7/26/84 (DCL-84-273) (SSER 31 p. 4-29) (IR 50-275/83-19; 50-323/83-15)
II.B.3.1	POSTACCIDENT SAMPLING - INTERIM SYSTEM	C - 7/26/84 (DCL-84-273) (U1) (SSER 31 p. 4-33) 6/6/85 (DCL-85-204) (U2) (SSER 32 p. 10-5)
I.B.3.2	POSTACCIDENT SAMPLING - CORRECTIVE ACTIONS	C - 7/26/84 (DCL-84-273) (U1) (SSER 31 p. 4-33) 6/6/85 (DCL-85-204) (U2) (SSER 32 p. 10-5)
II.B.3.3	POSTACCIDENT SAMPLING - PROCEDURES	C - 7/26/84 (DCL-84-273) (U1) (SSER 31 p. 4-33) 6/6/85 (DCL-85-204) (U2) (SSER 32 p. 10-5)
II.B.3.4	POSTACCIDENT SAMPLING - PLANT MODIFICATIONS (LL CAT B)	C - 7/26/84 (DCL-84-273) (U1) (SSER 31 p. 4-33) 6/6/85 (DCL-85-204) (U2) (SSER 32 p. 10-5)
II.B.4.1	TRAINING FOR MITIGATING CORE DAMAGE - DEVELOP TRAINING PROGRAM	C - 8/12/81 (IR 50-275/81-19; 50-323/81-13)



DIABLO CANYON POWER PLANT
IMPLEMENTATION STATUS OF THE ACTION PLAN ITEMS

<u>ISSUE NUMBER</u>	<u>ISSUE TITLE</u>	<u>STATUS</u>
II.B.4.2.A	TRAINING FOR MITIGATING CORE DAMAGE - INITIAL	C - 8/12/81 (IR50-275/81-19; 50-323/81-13)
II.B.4.2.B	TRAINING FOR MITIGATING CORE DAMAGE - COMPLETE	C - 8/12/81 (IR50-275/81-19; 50-323/81-13)
II.D.1.1	RELIEF & SAFETY VALVE TEST REQUIREMENTS - SUBMIT PROGRAM	C - 2/26/81 (PG&E letter to NRC) (SSER 14 p. 3-13)
II.D.1.2.A	RELIEF & SAFETY VALVE TEST REQUIREMENTS - COMPLETE TESTING	C - 11/25/85 (DCL-85-352) (DCL-85-284) (NRC letter to PG&E 1/27/86)
II.D.1.2.B	RELIEF & SAFETY VALVE TEST REQUIREMENTS - PLANT SPECIFIC REPORT	C - 11/25/85 (DCL-85-352) (DCL-85-284) (NRC letter to PG&E 1/27/86)
II.D.1.3	RELIEF & SAFETY VALVE TEST REQUIREMENTS - BLOCK-VALVE TESTING	C - 11/25/85 (DCL-85-352) (DCL-85-284) (NRC letter to PG&E 1/27/86)
II.D.3.1	VALVE POSITION INDICATION - INSTALL DIRECT INDICATIONS OF VALVE POS	C - 10/9/81 (IR 50-275/81-20;50-323/81-14)
II.D.3.2	VALVE POSITION INDICATION - TECH SPECS	C - 8/26/85 (Combined TS, TS 3.3.3.6, Table 3.3-10, Items 13, 14 and 15)



Vertical text or markings on the left side of the page, possibly bleed-through from the reverse side.

Vertical text or markings on the right side of the page, possibly bleed-through from the reverse side.

DIABLO CANYON POWER PLANT
IMPLEMENTATION STATUS OF THE ACTION PLAN ITEMS

<u>ISSUE NUMBER</u>	<u>ISSUE TITLE</u>	<u>STATUS</u>
II.E.1.1.1	AFS EVALUATION-ANALYSIS	C - 10/9/80 (PG&E letter to NRC) (SSER 14 p. 2-11)
II.E.1.1.2	AFS EVALUATION-SHORT TERM MODS	C - 10/13/82 (U1) (IR 50-275/82-29) C - 12/30/85 (U2) (DCL-85-380)
II.E.1.1.3	AFS - LONG TERM MODS	C - 4/5/83 (U1) (IR 50-275) 83-12 C - 12/30/85 (U2) (DCL-85-380)
II.E.1.2.1.A	AFS INITIATION & FLOW-CONTROL GRADE	C - 11/12/81 (U1) (IR 50-275/81-26) C - 3/20/85 (U2) (DCL-85-119) (T.P. 3.7 Addendum 3 - 5/13/84; 10/15/85)
II.E.1.2.1.B	AFS INITIATION & FLOW - SAFETY GRADE	C - 11/12/81 (U1) (IR 50-275/81-26) C - 3/20/85 (U2) (DCL-85-119) (T.P. 3.7 Addendum 3 - 5/13/84; 10/15/85)
II.E.1.2.2.A	AFS INITIATION & FLOW - FLOW INDICATION CONTROL GRADE	C - 11/12/81 (U1) (IR 50-275/81-26) C - 3/20/85 (U2) (DCL-85-119) (T.P. 3.7 Addendum 3 - 5/13/84; 10/15/85)
II.E.1.2.2.B	AFS INITIATION & FLOW - LL CAT A TECH SPECS	C - 8/26/85 (Combined TS, TS 3/4.7.12)
II.E.1.2.2.C	AFS INITIATION & FLOW - SAFETY GRADE	C - 11/12/81 (U1) (IR 50-275/81-26) C - 3/20/85 (U2) (DCL-85-119) (T.P. 3.7 Addendum 3 - 5/13/84; 10/15/85)
II.E.3.1.1	EMERGENCY POWER FOR PRESSURIZER HEATERS - UPGRADE POWER SUPPLY	C - 6/27/84 (U1) (IR 50-275/84-10) C - 4/4/85 (U2) (IR 50-323/85-02)
II.E.3.1.2	EMERGENCY POWER FOR PRESSURIZER HEATERS - TECH SPECS	C - 8/26/85 (Combined TS, TS 3/4.4.3)



Vertical text or markings on the left side of the page.

Vertical text or markings on the left side of the page.

Vertical text or markings on the left side of the page.

Vertical text or markings on the right side of the page.

Small mark or text in the lower-left quadrant.

Small mark or text in the lower-right quadrant.

DIABLO CANYON POWER PLANT
IMPLEMENTATION STATUS OF TMI ACTION PLAN ITEMS

ISSUE NUMBER	ISSUE TITLE	STATUS
II.E.4.1.1	DEDICATED HYDROGEN PENETRATIONS - DESIGN	C - 11/26/84 (U2) (IR-50-323/84-26) C - 8/12/81 (U1) (IR-50-275/81-19)
II.E.4.1.2	DEDICATED HYDROGEN PENETRATIONS - REVIEW & REVISE H2 CONTROL PROC	C - 11/26/84 (U2) (IR-50-323/84-26) C - 8/18/81 (U1) (Procedure OP H-9)
II.E.4.1.3	DEDICATED HYDROGEN PENETRATION - INSTALL	C - 11/26/84 (U2) (IR-50-323/84-26) C - 8/12/81 (U1) (IR-50-275/81-19)
II.E.4.2.1-4	CONTAINMENT ISOLATION DEPENDABILITY - IMP. DIVERSE ISOLATION	C - 4/81 (SSER 14 p. 2-25) C - 4/12/85 (IR 50-275/85-07; 50-323/85-08)
II.E.4.2.5.A	CONTAINMENT ISOLAT. DEPENDABILITY - CNTMT PRESS. SETPT. SPECIFY PRESS	C - 2/10/83 (IR-50-275/83-03; 50-323/83-02)
II.E.4.2.5.B	CONTAINMENT ISOLATION DEPENDABILITY - CNTMT PRESSURE SETPT. MODS	C - 2/10/83 (IR-50-275/83-03; 50-323/83-02)
II.E.4.2.6	CONTAINMENT ISOLATION DEPENDABILITY - CNTMT PURGE VALVES	C - 8/8/86 (DCL-86-233) (DCL-83-176) (IR 50-275/85-07; 50-323/85-08)
II.E.4.2.7	CONTAINMENT ISOLATION DEPENDABILITY - RADIATION SIGNAL OF PURGE VALVES	C - 4/81 (SSER 14, p. 2-25)
II.E.4.2.8	CONTAINMENT ISOLATION DEPENDABILITY - TECH SPECS	C - 8/26/85 (Combined TS, TS 3/4.6.1.7)



DIABLO CANYON POWER PLANT
IMPLEMENTATION STATUS OF THE ACTION PLAN ITEMS

<u>ISSUE NUMBER</u>	<u>ISSUE TITLE</u>	<u>STATUS</u>
II.F.1.1	ACCIDENT - MONITORING - PROCEDURES	C - 1983 (DCPP Plant Manual, Vol. 3A & 3B, Emergency Procedures)
II.F.1.2.A	ACCIDENT - MONITORING - NOBLE GAS MONITOR	C - 11/22/83 (U1) (IR 50 275/83-32) C - 1/14/85 (U2) (IR 50-323/85-13)
II.F.1.2.B	ACCIDENT - MONITORING - IODINE/PARTICULATE SAMPLING	C - 11/22/83 (U1) (IR 50 275/83-32) C - 1/14/85 (U2) (IR 50-323/85-13)
II.F.1.2.C	ACCIDENT - MONITORING - CONTAINMENT HIGH-RANGE MONITOR	C - 11/22/83 (U1) (IR 50 275/83-32) C - 1/14/85 (U2) (IR 50-323/85-13)
II.F.1.2.D	ACCIDENT - MONITORING - CONTAINMENT PRESSURE	C - 4/10/85 (DCL-85-145)
II.F.1.2.E	ACCIDENT - MONITORING - CONTAINMENT WATER LEVEL	C - 6/6/85 (DCL-85-204)
II.F.1.2.F	ACCIDENT - MONITORING - CONTAINMENT HYDROGEN	C - 6/6/85 (DCL-85-204)
II.F.2.1	INSTRUMENTATION FOR DETECT. OF INADEQUATE CORE COOLING - PROCEDURES	C - 4/25/85 (U2) (DCL-85-168) (SSER 32 p. 10-6) C - 5/2/89 (U1) (SSER 31, p. 4-16 through 4-19)
II.F.2.2	INSTRUMENTATION FOR DETECT. OF INADEQUATE CORE COOLING - SUBCOOL METER	C - 4/3/85 (U2) (IR 50-323/85-02 p. 3) C - 7/85 (U1) (SSER 32 p. 10-5)
II.F.2.3	INSTRUMENTATION FOR DETECT. OF INADEQUATE CORE COOLING - DESC. OTHER	C - 4/85 (SSER 31, p. 4-16)

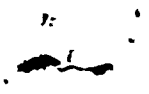


Vertical text on the left edge, possibly a page number or margin note.

Vertical text on the right edge, possibly a page number or margin note.

DIABLO CANYON POWER PLANT
IMPLEMENTATION STATUS OF TMI ACTION PLAN ITEMS

<u>ISSUE NUMBER</u>	<u>ISSUE TITLE</u>	<u>STATUS</u>
II.F.2.4	INSTRUMENTATION FOR DETECT. OF INADEQUATE CORE CLING INSTLL ADD'L INSTRUMENTATION	C - 3/85 (U1) (SSER 31, p. 4-18) C - 3/7/86 (U2) (DCL-86-060)
II.G.1.1	POWER SUPP. FOR PRESSURIZER RELIEF, BLOCK VALVES & LEVEL IND. UPGRADE	C - 8/10/82 (U1) (IR 50-275/82-25 p.3) C - 9/12/84 (U2) (T.P. 26.3)
II.G.1.2	POWER SUPP. FOR PRESSURIZER RELIEF, BLOCK VALVES & LEVEL IND. - TECH SP	C - 8/26/85 (Combined TS operability requirement of TS, 3.3.3.6 and BASES 3/4.3.3.6, 3/4.8.1, 3/4.8.2, and 3/4.8.3)
II.K.1	IE BULLETINS - 79-05, 79-06, 79-08	N/A
II.K.1.5	IE BULLETINS - REVIEW ESF VALVES	C - 7/17/81 (IR 50-275/81-13; 50-323/81-10 p. 3)
II.K.1.10	IE BULLETINS - OPERABILITY STATUS	C - 7/17/81 (IR 50-275/81-13; 50-323/81-10 p. 3)
II.K.1.20	IE BULLETINS - PROMPT MANUAL REACTOR TRIP	N/A
II.K.1.21	IE BULLETINS - AUTO SG ANTICIPATORY REACTOR TRIP	N/A
II.K.1.22	IE BULLETINS - AUX. HEAT REM SYSTEM, PROC	N/A
II.K.1.23	IE BULLETINS - RV LEVEL, PROCEDURES	N/A



Vertical text on the left margin, possibly bleed-through from the reverse side of the page.

Vertical text on the right margin, possibly bleed-through from the reverse side of the page.

Small dark mark or smudge in the lower-left quadrant.

Small dark mark or smudge in the lower-right quadrant.

Small dark mark or smudge in the bottom-left area.

Small dark mark or smudge in the bottom-center area.

DIABLO CANYON POWER PLANT
IMPLEMENTATION STATUS OF TMI ACTION PLAN ITEMS

ISSUE NUMBER	ISSUE TITLE	STATUS
II.K.2.2	ORDERS ON B&W PLANTS - PROCEDURES TO CONTROL APW IND OF ICS	N/A
II.K.2.8	ORDERS ON B&W PLANTS - UPGRADE AFW SYSTEM	N/A
II.K.2.9	ORDERS ON B&W PLANTS - FEMA ON ICS	N/A
II.K.2.10	ORDERS ON B&W PLANTS - SAFETY-GRADE TRIP	N/A
II.K.2.11	ORDERS ON B&W PLANTS - OPERATOR TRAINING	N/A
II.K.2.13	ORDERS ON B&W PLANTS - THERMAL MECHANICAL REPORT (CE & W PLANTS ALSO)	C - 4/85 (SSER 31 p. 4-35)
II.K.2.14	ORDERS ON B&W PLANTS - LIFT FREQUENCY OF PORV'S & SV'S	N/A
II.K.2.15	ORDERS ON B&W PLANTS - EFFECTS OF SLUG FLOW	N/A
II.K.2.16	ORDERS ON B&W PLANTS - RCP SEAL DAMAGE	N/A
II.K.2.17	ORDERS ON B&W PLANTS - VOIDING IN RCS (CE & W PLANTS ALSO)	C - 8/2/83 (PG&E letter to NRC)
II.K.2.19	BENCHMARK ANALYSIS OF SEQUENTIAL AFW FLOW TO ONCE THROUGH STM GENERATOR	N/A



Vertical line of small, illegible characters or noise on the left side of the page.

Vertical line of small, illegible characters or noise on the right side of the page.

DIABLO CANYON POWER PLANT
IMPLEMENTATION STATUS OF TMI ACTION PLAN ITEMS

<u>ISSUE NUMBER</u>	<u>ISSUE TITLE</u>	<u>STATUS</u>
II.K.2.20	ORDERS ON B&W PLANTS - SYSTEM RESPONSE TO SB LOCA	N/A
II.K.3.1.A	B&O TASK FORCE - AUTOMATIC PORV ISOLATION DESIGN	NC - 3/14/83 (PG&E letter to NRC)
II.K.3.1.B	FINAL RECOMMENDATIONS, B&O TASK FORCE - AUTO PORV ISO TEST/INSTALL	NC - 3/14/83 (PG&E letter to NRC) (WCAP-9804)
II.K.3.2	B&O TASK FORCE - REPORT ON PORV FAILURES	C - 3/14/83 (PG&E letter to NRC)
II.K.3.3	B&O TASK FORCE - REPORTING SV & RV FAILURES AND CHALLENGES	C - 8/26/85 (Tech Spec 6.9.1.7)
II.K.3.5.A	B&O TASK FORCE - AUTO TRIP OF RCP'S PROPOSED MODIFICATIONS	C - 8/26/85 (DCL-85-280) C - 12/24/85 (DCL-85-370)
II.K.3.5.B	B&O TASK FORCE - AUTO TRIP OF RCP'S MODIFICATIONS	C - 12/24/85 (DCL-85-370)
II.K.3.7	B&O TASK FORCE - EVALUATION OF PORV OPENING PROBABILITIES	N/A
II.K.3.9	B&O TASK FORCE - PID CONTROLLER MODIFICATIONS	C - 3/81 (SSER 12 p. II - 16) (IR 50-323/84-26)
II.K.3.10	B&O TASK FORCE - PROPOSED ANTICIPATORY TRIP MODIFICATIONS	N/A - 8/80 (SSER 10 p. II. K-12) (IR 50-323/84-26)
II.K.3.11	B&O TASK FORCE - JUSTIFY USE OF CERTAIN PORV	N/A - 8/80 (SSER 10 p. II. K-12)



1
2
3
4
5
6
7
8
9
10
11
12
13
14
15
16
17
18
19
20
21
22
23
24
25
26
27
28
29
30
31
32
33
34
35
36
37
38
39
40
41
42
43
44
45
46
47
48
49
50
51
52
53
54
55
56
57
58
59
60
61
62
63
64
65
66
67
68
69
70
71
72
73
74
75
76
77
78
79
80
81
82
83
84
85
86
87
88
89
90
91
92
93
94
95
96
97
98
99
100

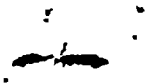
1
2
3
4
5
6
7
8
9
10
11
12
13
14
15
16
17
18
19
20
21
22
23
24
25
26
27
28
29
30
31
32
33
34
35
36
37
38
39
40
41
42
43
44
45
46
47
48
49
50
51
52
53
54
55
56
57
58
59
60
61
62
63
64
65
66
67
68
69
70
71
72
73
74
75
76
77
78
79
80
81
82
83
84
85
86
87
88
89
90
91
92
93
94
95
96
97
98
99
100

1
2
3
4
5
6
7
8
9
10
11
12
13
14
15
16
17
18
19
20
21
22
23
24
25
26
27
28
29
30
31
32
33
34
35
36
37
38
39
40
41
42
43
44
45
46
47
48
49
50
51
52
53
54
55
56
57
58
59
60
61
62
63
64
65
66
67
68
69
70
71
72
73
74
75
76
77
78
79
80
81
82
83
84
85
86
87
88
89
90
91
92
93
94
95
96
97
98
99
100

1
2
3
4
5
6
7
8
9
10
11
12
13
14
15
16
17
18
19
20
21
22
23
24
25
26
27
28
29
30
31
32
33
34
35
36
37
38
39
40
41
42
43
44
45
46
47
48
49
50
51
52
53
54
55
56
57
58
59
60
61
62
63
64
65
66
67
68
69
70
71
72
73
74
75
76
77
78
79
80
81
82
83
84
85
86
87
88
89
90
91
92
93
94
95
96
97
98
99
100

DIABLO CANYON POWER PLANT
IMPLEMENTATION STATUS OF THE ACTION PLAN ITEMS

<u>ISSUE NUMBER</u>	<u>ISSUE TITLE</u>	<u>STATUS</u>
II.K.3.12.A	B&O TASK FORCE - ANTICIPATORY TRIP ON TURBINE TRIP PROPOSED MODS	NC - 8/80 (SSER 10 p. II. K-12) (IR 50-323/84-26)
II.K.3.12.B	B&O TASK FORCE - ANTICIPATORY TRIP ON TURBINE TRIP INSTALL MODS	NC - 8/80 (SSER 10 p. II. K-12) (IR 50-323/84-26)
II.K.3.13.A	B&O TASK FORCE - HPCI & RCIC SYSTEM INITIATION LEVELS ANALYSIS	N/A
II.K.3.13.B	B&O TASK FORCE - HPCI & RCIC INITIATION LEVELS MODIFICATION	N/A
II.K.3.14	B&O TASK FORCE - ISO CONDENSER ISOLATION ON HIGH RAD	N/A
II.K.3.15	B&O TASK FORCE - MODIFY HPCI & RCIC BRK DETECTION CIRCUITRY	N/A
II.K.3.16.A	B&O TASK FORCE - CHALLENGE & FAILURE OF RELIEF VALVES STUDY	N/A
II.K.3.16.B	B&O TASK FORCE - CHALLENGE & FAILURE OF RELIEF VALVES MODIFICATIONS	N/A
II.K.3.17	B&O TASK FORCE - ECC SYSTEM OUTAGES	C - 3/25/83 (PG&E letter to NRC)
II.K.3.18.A	B&O TASK FORCE - ADS ACTUATION STUDY	N/A
II.K.3.18.B	B&O TASK FORCE - ADS ACTUATION PROPOSED MODIFICATONS	N/A
II.K.3.18.C	B&O TASK FORCE - ADS ACTUATION MODIFICATIONS	N/A



DIABLO CANYON POWER PLANT
IMPLEMENTATION STATUS OF THE ACTION PLAN ITEMS

<u>ISSUE NUMBER</u>	<u>ISSUE TITLE</u>	<u>STATUS</u>
II.K.3.19	B&O TASK FORCE - INTERLOCK RECIRCULATORY PUMP MODIFICATIONS	N/A
II.K.3.20	B&O TASK FORCE - LOSS OF SVC WATER AT BRP	N/A
II.K.3.21.A	B&O TASK FORCE - RESTART OF CSS & LPCI LOGIC DESIGN	N/A
II.K.3.21.B	B&O TASK FORCE - RESTART OF CSS & LPCI LOGIC DESIGN MODIFICATIONS	N/A
II.K.3.22.A	B&O TASK FORCE - RCIC SUCTION VERIFICATION PROCEDURES	N/A
II.K.3.22.B	B&O TASK FORCE - RCIC SUCTION MODIFICATION	N/A
II.K.3.24	B&O TASK FORCE - SPACE COOLING FOR HPCI/RCI LOSS OF AC POWER	N/A
II.K.3.25.A	B&O TASK FORCE - POWER ON PUMP SEALS PROPOSED MODIFICATIONS	NC - 4/81 (SSER 14 p. 3-22) (IR 50-323/84-28)
II.K.3.25.B	B&O TASK FORCE - POWER ON PUMP SEALS MODIFICATIONS	NC - 4/81 (SSER 14 p. 3-22) (IR 50-323/84-28)
II.K.3.27	B&O TASK FORCE - COMMON REFERENCE LEVEL FOR BWRS	N/A
II.K.3.28	B&O TASK FORCE - QUALIFICATION OF ADS ACCUMULATORS	N/A



11

DIABLO CANYON POWER PLANT
IMPLEMENTATION STATUS OF TMI ACTION PLAN ITEMS

<u>ISSUE NUMBER</u>	<u>ISSUE TITLE</u>	<u>STATUS</u>
II.K.3.29	B&O TASK FORCE - PERFORMANCE OF ISOLATION CONDENSERS	N/A
II.K.3.30.A	B&O TASK FORCE - SCHEDULE FOR OUTLINE OF SB LOCA MODEL	C - 7/85 (SSER 32 p. 9-4)
II.K.3.30.B	B&O TASK FORCE - SB LOCA MODEL, JUSTIFICATION	C - 7/85 (SSER 32 p. 9-4)
II.K.3.30.C	B&O TASK FORCE - SB LOCA METHODS NEW ANALYSES	C - 7/85 (SSER 32 p. 9-4)
II.K.3.31	B&O TASK FORCE - COMPLIANCE WITH CFR 50.46	C - 12/9/86 (U1) (NRC Letter to PG&E) Not required for Unit 2
II.K.3.40	B&O TASK FORCE - RCP SEAL DAMAGE - COVERED BY II.K.2.16 AND II.K.3.25	N/A
II.K.3.43	B&O TASK FORCE - EFFECTS OF SLUG FLOW - COVERED BY II.K.2.15	N/A
II.K.3.44	B&O TASK FORCE - EVALUATE TRANSIENT WITH SINGLE FAILURE	N/A
II.K.3.45	B&O TASK FORCE - ANALYSES TO SUPPORT	N/A



Handwritten marks and scribbles in the top right corner, including a small number '6' and some illegible characters.

DIABLO CANYON POWER PLANT
IMPLEMENTATION STATUS OF THE ACTION PLAN ITEMS

ISSUE NUMBER	ISSUE TITLE	STATUS
II.K.3.46	RESPONSES TO LIST OF CONCERNS FROM ACRS CONSULTANT	N/A
II.K.3.57	IDENTIFY WATER SOURCES PRIOR TO MANUAL ACTIVATION OF ADS	N/A
III.A.1.1	EMERGENCY PREPAREDNESS, SHORT TERM	C - 5/10/84; 8/16/84 (NRC letters to PG&E)
III.A.1.2.1	UPGRADE EMERGENCY SUPPORT FACILITIES - INTERIM OSC DSC & EOF	C - 4/85 (SSER 31, p. 4-29)
III.A.1.2.2	UPGRADE EMERGENCY SUPPORT FACILITIES - DESIGN INCORP.	C - 4/85 (SSER 31, p. 4-29)
III.A.1.2.3	UPGRADE EMER SUPPORT FACILITIES - MODS INCORPOR.	C - 4/85 (SSER 31, p. 4-29)
III.A.2.1	UPGRADE PREPAREDNESS - UPGRADE EMERGENCY PLANS TO APP. E. 10 CFR 50	C - 4/85 (SSER 31 p. 4-36)
III.A.2.2	UPGRADE PREPAREDNESS - METEOROLOGICAL DATA	C - 4/85 (SSER 31 p. 4-36)
III.D.1.1.1	PRIMARY COOLANT OUTSIDE CONTAINMENT - LEAK REDUCTION	C - 6/27/84 (U1) (IR 50-275/84-10 p. 8) C - 8/29/85 (U2) (IR 50-323/85-23 p. 11)



1
2
3
4
5
6
7
8
9
10
11
12
13
14
15
16
17
18
19
20
21
22
23
24
25
26
27
28
29
30
31
32
33
34
35
36
37
38
39
40
41
42
43
44
45
46
47
48
49
50
51
52
53
54
55
56
57
58
59
60
61
62
63
64
65
66
67
68
69
70
71
72
73
74
75
76
77
78
79
80
81
82
83
84
85
86
87
88
89
90
91
92
93
94
95
96
97
98
99
100

1
2
3
4
5
6
7
8
9
10
11
12
13
14
15
16
17
18
19
20
21
22
23
24
25
26
27
28
29
30
31
32
33
34
35
36
37
38
39
40
41
42
43
44
45
46
47
48
49
50
51
52
53
54
55
56
57
58
59
60
61
62
63
64
65
66
67
68
69
70
71
72
73
74
75
76
77
78
79
80
81
82
83
84
85
86
87
88
89
90
91
92
93
94
95
96
97
98
99
100

1
2
3
4
5
6
7
8
9
10
11
12
13
14
15
16
17
18
19
20
21
22
23
24
25
26
27
28
29
30
31
32
33
34
35
36
37
38
39
40
41
42
43
44
45
46
47
48
49
50
51
52
53
54
55
56
57
58
59
60
61
62
63
64
65
66
67
68
69
70
71
72
73
74
75
76
77
78
79
80
81
82
83
84
85
86
87
88
89
90
91
92
93
94
95
96
97
98
99
100

1
2
3
4
5
6
7
8
9
10
11
12
13
14
15
16
17
18
19
20
21
22
23
24
25
26
27
28
29
30
31
32
33
34
35
36
37
38
39
40
41
42
43
44
45
46
47
48
49
50
51
52
53
54
55
56
57
58
59
60
61
62
63
64
65
66
67
68
69
70
71
72
73
74
75
76
77
78
79
80
81
82
83
84
85
86
87
88
89
90
91
92
93
94
95
96
97
98
99
100

15

15

DIABLO CANYON POWER PLANT
IMPLEMENTATION STATUS OF THE ACTION PLAN ITEMS

<u>ISSUE NUMBER</u>	<u>ISSUE TITLE</u>	<u>STATUS</u>
III.D.1.1.2	PRIMARY COOLANT OUTSIDE CONTAINMENT - TECH SPECS	C - 8/26/85 (DCPP Tech Spec 6.8.4.a)
III.D.3.3.1	INPLANT RAD. MONIT. PROVIDE MEANS TO DETER. PRESENCE OF RADIOIODINE	C - 1/2/84 (IR 50-275/84-41; 50-323/84-29)
III.D.3.3.2	INPLANT RADIATION MONIT. MODIFICATIONS TO ACCURATELY MEAS. IODINE	C - 1/2/84 (IR 50-275/84-41; 50-323/84-29)
III.D.3.4.1	CONTROL ROOM HABITABILITY - REVIEW	C - 9/3/80 (PG&E letter to NRC) (SSER 14 p. 2-30)
III.D.3.4.2	CONTROL ROOM HABITABILITY - SCHEDULE MODIFICATIONS	NC - 9/3/80 (PG&E letter to NRC) (SSER 14 p. 2-30)
III.D.3.4.3	CONTROL ROOM HABITABILITY - IMPLEMENT MODIFICATIONS	NC - 9/3/80 (PG&E letter to NRC) (SSER 14 p. 2-30)
MPA-F008	I.D.1.1 DETAILED CONTROL ROOM REVIEW PROGRAM PLAN	O - Status for I.D.1 is applicable to this item
MPA-F063	III.A.1.2 TECHNICAL SUPPORT CENTER	C - Status for III.A.1.2 is applicable to this item
MPA-F064	III.A.1.2 OPERATIONAL SUPPORT CENTER	C - Status for III.A.1.2 is applicable to this item



Handwritten marks or scribbles in the top right corner.

DIABLO CANYON POWER PLANT
IMPLEMENTATION STATUS OF THE ACTION PLAN ITEMS

<u>ISSUE NUMBER</u>	<u>ISSUE TITLE</u>	<u>STATUS</u>
MPA-F065	III.A.1.2 EMERGENCY OPERATIONS FACILITY	C - Status for III.A.1.2 is applicable to this item
MPA-F071	I.D.1.2 DETAILED CONTROL ROOM REVIEW (FOLLOWUP TO F-8)	C - Status for I.D.1 is applicable to this item.
MPA-B072	NUREG-0737 TECH SPECS (GENERIC LETTERS 82-16 & 83-02)	C - 8/26/85 (Combined TS) GL 83-02 N/A (BWRs only)
MPA-B082	TECH SPEC COVERED BY GENERIC LETTERS 83-26 & 83-37 FOR NUREG-0737	C - 8/26/85 (Combined TS)
67.4.1	REACTOR COOLANT PUMP TRIP (GENERIC LETTER 85-12 to PG&E)	C - 3/9/89 (NRC Letter to PG&E)

10 55
10 55
10 55

2
17
18