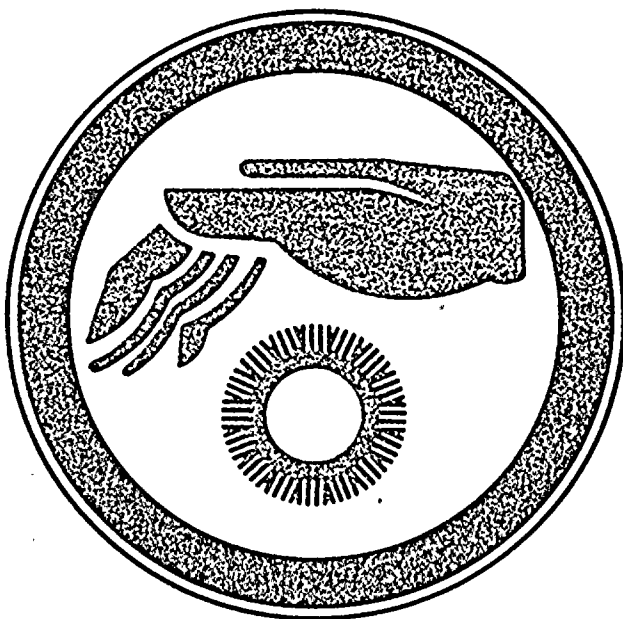
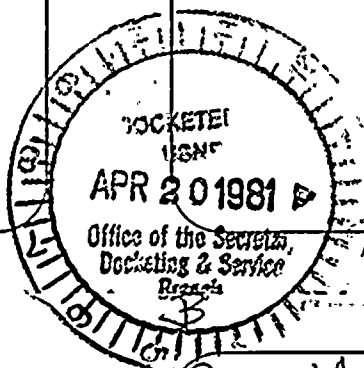


4/20/81



Proceeds from the sale of this card will be used by Concerned Citizens of San Luis Obispo County in the fight against a nuclear Diablo Canyon power plant.

Concerned Citizens
San Luis Obispo County
P.O. Box 456, San Luis Obispo.



DOCKET NUMBER 50-275-323

D503
s
1/0

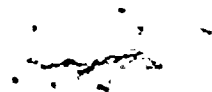


Dear Mr Hendrie,
To liscence DIABLO Canyon without addressing our concerns is to slap democracy in the face! As a resident of San Luis Obispo Calif. I demand a public hearing. I am a farmer in the Los Osos Valley. My future depends on it. Enclosed you will find a copy of a few of the concerns we hold. thank you.

James P. Heile

8105110398

H



1. Low Power Testing: PG&E is appealing the Licensing Board's decision that public hearings will be necessary before a low power license to operate is granted to Diablo. As a result of recent pro-nuclear pressure, the NRC staff is now agreeing with this contention. We must demand a public hearing!
2. The Hosgri Fault: Lying less than three miles away from the plant, this active fault could deliver an earthquake roughly ten times stronger than the plant was originally designed to withstand. PG&E claims to have up-graded the structure, but these changes are external only- the basic plant remains unchanged.
3. Emergency Planning: The current plan under preparation admits that under the worst rapidly-developing accident conditions, the only action local citizens can take to protect themselves is to stay indoors and close the windows. Planners admit that panic could easily ensue in such communities as Avila Beach.
4. Plant Security: As terrorist threats grow worldwide, nuclear plants remain easy pickings for a well-planned attack. PG&E won't let even an unbiased expert evaluate their plan, but they assure us that it's perfect....
5. Waste Storage: Will a safe, reliable method of storing Diablo's highly toxic wastes be ready when needed? Or will wastes be stored indefinitely on site, as practiced elsewhere? Perhaps they'll be stored on site permanently, as suggested recently by the U.S. General Services Admin.?
6. Decommissioning: Will PG&E have the hundreds of millions of dollars it will need to decommission Diablo in 25-30 years, or after an accident? Or will the plant sit there deteriorating indefinitely, as Three Mile Island and PG&E's Humboldt Bay Plant currently are?
7. Low-level Emissions: What are the long-term health effects of NRC-allowed low-level radioactive emissions from operating plants, as this material is incorporated and recycled through our soil, water and food supply in ever-increasing concentrations near the plant?

Other issues include Cost-effectiveness, Conservation and Alternate Energy.

J.S. NO. 1
 NUCLEAR COMMISSION
 DOCKETING & SERVICE SECTION
 OFFICE OF THE SECRETARY
 OF THE COMMISSION

Document Statistics

Postmark Date illegible
 Copies Received 1
 Add'l Copies Reproduced 30 + RIDS
 Special Distribution _____



Handwritten scribbles and marks in the top right corner.

TO:

Document Control Desk, 016 Phillips

FROM:

Docketing & Service Branch, Office of the Secretary

SUBJECT:

REQUEST FOR DISTRIBUTION SERVICE THROUGH REGULATORY INFORMATION
DISTRIBUTION SYSTEM (RIDS)

NOTE: The attached document, which relates to a specific
licensing docket, is the DOCUMENT CONTROL ACTION
COPY. It is certified by the Office of the Secretary
as the best available copy.

RIDS CODES AND TITLES

Rids Code

Description

DS01	Antitrust Issuances
DS02	Non-Antitrust Issuances
<u>DS03</u>	Filings (Not Originated by NRC)
DS04	Antitrust Filings (Originated by Non-Parties)
DS05	Non-Antitrust Filings (Originated by Non-Parties)
DS06	ELD Filings (Antitrust)
DS07	ELD Filings (Non-Antitrust)
DS08	Antitrust Filings (Not Originated by NRC)

Add:

1
2
3
4
5
6
7
8
9
10
11
12
13
14
15
16
17
18
19
20
21
22
23
24
25
26
27
28
29
30
31
32
33
34
35
36
37
38
39
40
41
42
43
44
45
46
47
48
49
50
51
52
53
54
55
56
57
58
59
60
61
62
63
64
65
66
67
68
69
70
71
72
73
74
75
76
77
78
79
80
81
82
83
84
85
86
87
88
89
90
91
92
93
94
95
96
97
98
99
100

1

2

3

4

