

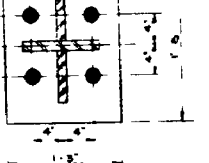
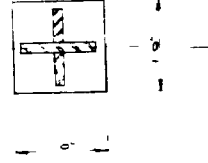
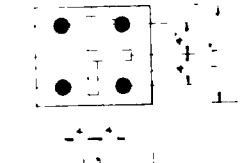
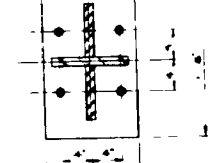
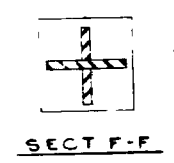
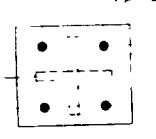
DWG NO. 5168A

SECTION A-A
 TYPE COLUMN ANCHORAGE
 EXCEPT AS NOTED IN SECT. C-C
 FOR UNIT WEIGHTS USE WEIGHTS OF STEEL (SEE NOTE)
 FOR UNIT WEIGHTS OF CONCRETE (SEE NOTE)

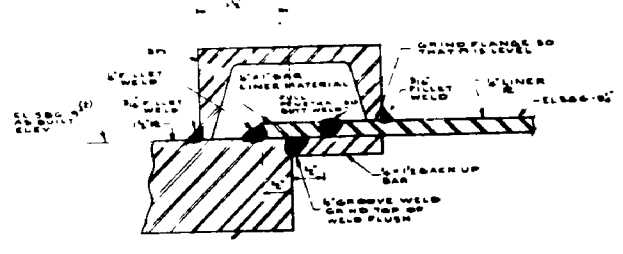
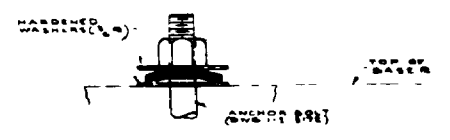
SECTION B-B

SECTION C-C
 TYPE COLUMN ANCHORAGE
 EXCEPT AS NOTED IN SECT. D-D
 FOR UNIT WEIGHTS USE WEIGHTS OF STEEL (SEE NOTE)
 FOR UNIT WEIGHTS OF CONCRETE (SEE NOTE)

SECTION D-D



DETAIL-3
 FOR BEST DETAIL INFORMATION
 SEE DETAIL-1
 TYPE AT COLS.
 (A), (B), (C), (D)



MATERIAL	SECTION
STRUCT. STEEL	---
CONCRETE	---
WELDS	---
ANCHOR BOLT	---
STEEL TIE	---
REINFORCING BARS	---
ANCHOR PLATE	---
WASHER	---
NUT	---
CONCRETE	---

NOTE: CONCRETE IS REINFORCED WITH STEEL TIES. ALL WELDS SHALL BE FULL PENETRATION BUTT JOINTS. ALL WELDS SHALL BE MADE BY A QUALIFIED WELDER IN ACCORDANCE WITH THE WELDER QUALIFICATION SYSTEM.

NOTE: PLEASE ALL MARK NUMBERS BY DWG. TRUS. VS. 5168A I-8

FIG. 5.2.2-59D

WORK THIS DRAWING WITH DWG. 1-E-5167
 JULY 1982