

PDR

MAR 29 1983

Docket No.: 50-275

MEMORANDUM FOR: Chairman Palladino
Commissioner Gilinsky
Commissioner Ahearne
Commissioner Roberts
Commissioner Asselstine

FROM: Darrell G. Eisenhut, Director
Division of Licensing
Office of Nuclear Reactor Regulation

SUBJECT: INFORMATION ITEMS REGARDING THE DESIGN VERIFICATION
PROGRAM FOR DIABLO CANYON, UNIT 1 (Board Notification
No. 83-41)

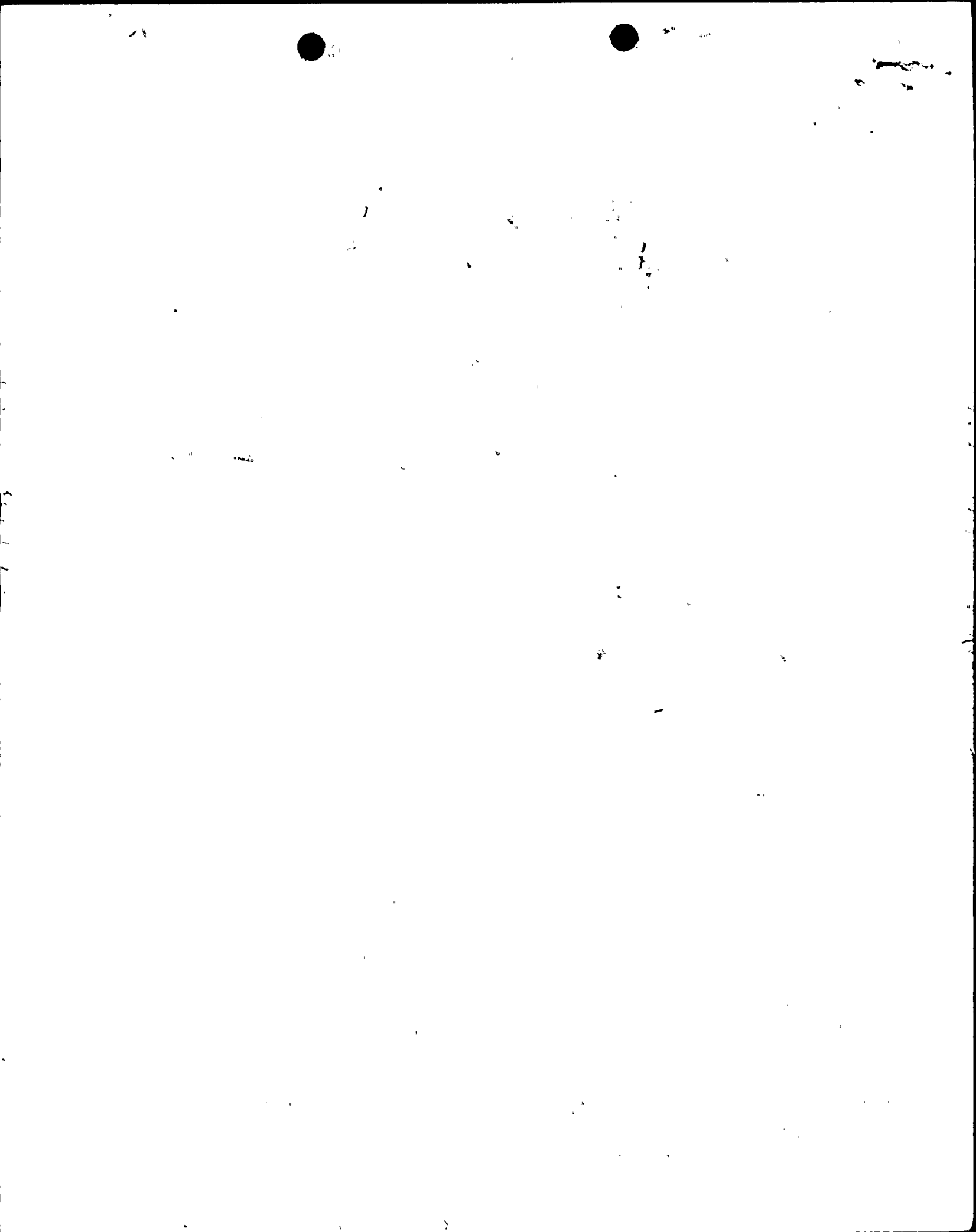
In accordance with the present NRC procedures for Board Notifications, the following items are enclosed for information of the Commission:

1. R. L. Cloud Associates, Open Item Reports, March 10, 1983
2. R. L. Cloud Associates, "ITR 40 - Soil-Intake Structure Sliding Resistance," March 10, 1983
3. Stone & Webster Engineering Corporation, SWEC March Semi-monthly Report DCS-332Q (Quality Assurance), March 11, 1983
4. Stone & Webster Engineering Corporation, SWEC March Semi-monthly Report DCS 334, March 11, 1983
5. Teledyne Engineering Services, IDVP Semi-monthly Report, March 11, 1983
6. R. F. Reedy Inc., Semi-monthly Report #25, March 16, 1983
7. Stone & Webster Engineering Corporation, "ITR 38 (Rev. 1) - Final Report on Construction Quality Assurance Evaluation of Wismer & Becker," March 18, 1983
8. NRC Trip Report, Memorandum from H. Polk to G. Lear, dated March 23, 1983

8304060152	830329
PDR ADDCK	05000275
PDR	PDR

Contact: Hans Schierling, ONRR
X27100

OFFICE ▶
SURNAME ▶
DATE ▶



The enclosures provide information on the status of activities performed under the Independent Design Verification Program (IDVP) for Diablo Canyon Unit 1 by the participating organizations. The information is relevant to the safety issue on the design adequacy of Diablo Canyon Unit 1. This is the subject of Commission Order CLI-81-30 which is the basis for the IDVP.

The material does not pertain to those matters that were raised by ALAB-644.

Original signed by
Darrell G. Eisenhut

Darrell G. Eisenhut, Director
Division of Licensing
Office of Nuclear Reactor Regulation

Enclosures:
As stated

cc: J. F. Wolf, ASLB
G. O. Bright, ASLB
J. Kline, ASLB
T. S. Moore, ASLAB
W. R. Johnson, ASLAB
J. H. Buck, ASLAB
SECY
OGC
OPE
Parties to Proceeding

Distribution:
See attached
sheet

See case to 483 for name 3/23
mmk 3/23
DE

OFFICE	DL:LB#3	DL:LB#3	DL:LB#3	DL:AD:L	DL:DIR		
SURNAME	Schierling, ph	J Lee	G Knighton	T Novak	DEisenhut		
DATE	3/29/83	3/23/83	3/23/83	3/23/83	3/29/83		



Handwritten scribbles and marks in the top right corner.

