

SOUTHWEST

WESTERN

PARTY 173
SAMPLE RATE 4 MS
PROCESS DIGITAL DECONVOLVED BEFORE STACK WITH DIGITAL FILTER

AREA SANTA LUCIA

SUM 1, STACK 4500%

WESTERN
GEOPHYSICAL

LINE W74-12
S.P.1012D-124

RECORDING
FORMAT SEG-C
(FLOATING POINT)
DATE JULY 5, 1974
SYSTEM DCS 808
FILTER 8-OUT
CABLE LENGTH 9900'
GROUP INT 220'
LEAD IN 907'
NO OF CHANNELS 62

(DBS)
TIME VARIANT MINIMUM PHASE INVERSE FILTER
AUTO CORR INT 2 ZONES OF 2000
SEARCH ZONE 14-200
OPERATOR LENGTH 200
TIME ZONE 00-60

DECONVOLUTION INFORMATION
MS
MS
SEC.

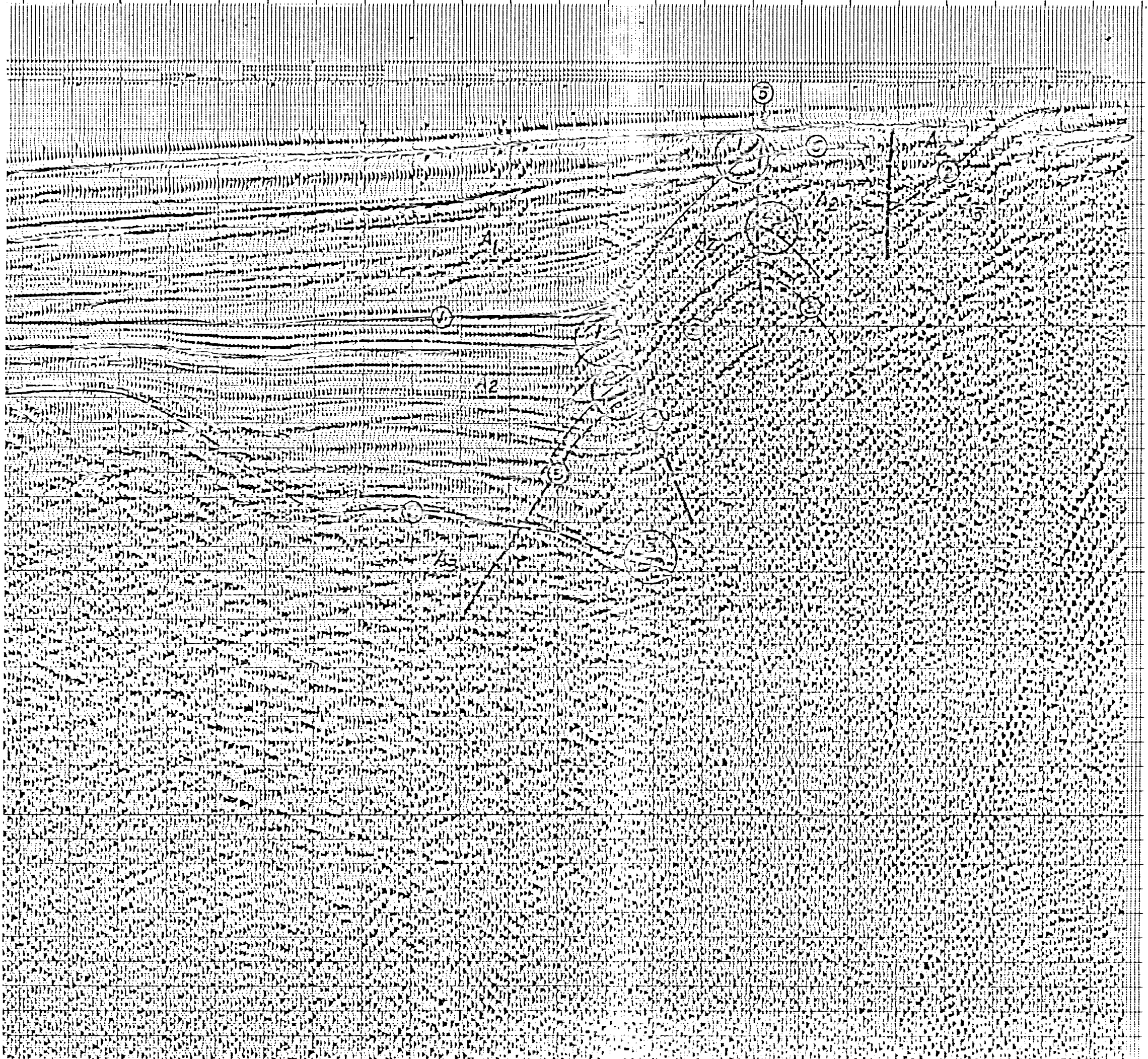
DIGITAL FILTER
TYPE 2-2
02-80 SEC
1.6 (CP3) MG
1 22

PLAYBACK
DATE SEPT 20, 1974
REEL 018481

INTERSECTIONS

VELOCITY ANALYSIS MADE AT
EVERY 5,280' INTERVAL

400 388 376 364 352 340 328 316 304 292 280 268 256 244 232 220 208 196 184 172 160 148 136 124
400 799 750 684 660 636 612 586 562 538 490 450 415 391 367 320 293 245 218 190 180 180 180 180



NOTES:

- ① REFLECTOR INTERPRETED TO REPRESENT THE UNCONFORMITY BETWEEN UPPER MIOCENE- LOWER PLIOCENE (ACOUSTIC UNIT A₂), AND UPPER PLIOCENE (ACOUSTIC UNIT A₁) STRATA.
- ② REFLECTORS INTERPRETED TO REPRESENT THE UNCONFORMITY BETWEEN UPPER MIOCENE AND OLDER OR MORE DEFORMED (ACOUSTIC UNIT A₃) ROCKS.
- ③ DIFFRACTIONS, INTERPRETED TO BE ASSOCIATED WITH FAULT SURFACES.
- ④ INTERPRETED POSITION OF BURIED REVERSE FAULT.
- ⑤ POSITION OF MAIN TRACE OF THE HOSGRI FAULT.
- ⑥ WATER-BOTTOM MULTIPLE.

PLATE I

WESTERN GEOPHYSICAL COMPANY

LINE W74-12