

Distribution

MAR 9 1976

Docket Nos. 50-275
and 50-323

Mr. Vincent A. Hill .
330 Pinal
Orcutt, California 93454

✓ Docket File
NRC PDR
Local PDR
NRR Reading (M. Groff)
LWR #3
BRusche
EGCase
JMiller
HDenton
RHeineman
VStello
RSBoyd
DAllison
EGoulbourne
ELD

GErtter (# 9872)
JCook
MGroff
EHughes
SHill
IE (3)
LWR Branch Chiefs
WRoss
WHaass
RCDeYoung
SECY Mail Facility (3)
(#76-1275)

Dear Mr. Hill:

Your letter of February 20, 1976 has been referred to me for reply. Your letter expressed opposition to allowing the Diablo Canyon Nuclear Power Plant to operate close to a major active fault and informed us of a cooling tank malfunction.

First, let me say that there is currently no significant risk to the public health and safety associated with earthquakes at the Diablo Canyon site. The reactors have never operated and do not have operating licenses. Pacific Gas and Electric Company does have a license for storage of new reactor fuel at the site. The Commission's staff has evaluated this new fuel storage and determined that it involves no significant risk even if an earthquake should occur which is much more severe than those considered in the plant's design.

With regard to an operating license, it must be established that the plant is adequately designed to withstand earthquakes which could occur at the site before an operating license can be issued. The Commission's staff is currently evaluating the operating license application and has not yet made final conclusions concerning the seismic design of the plant. The enclosure provides further details concerning this evaluation. I can assure you that all actions necessary to ensure an acceptable level of safety will be required before an operating license can be issued.

With regard to the cooling tank malfunction you mentioned, we have checked with the Commission's inspectors in California. The malfunction which you described is apparently an instance where the water level in the spent fuel storage pool was lowered six inches below the level required by the fuel storage license for a short period of time. The spent fuel storage pool is currently being used to store the new fuel discussed above. This event had no effect on public health and safety, but it has been reported to the Commission and corrective action to prevent a recurrence will be

taken.

OFFICE >

SURNAME >

DATE >

100

100

100

100

100

100

100

100

100

100

100

100

100

100

100

100

100

100

100

100

100

100

100

100

100

100

100

100

100

100

Mr. Vincent A. Hill

- 2 -

I trust you will find this information responsive to your concerns.

Sincerely,

Original

Original signed by R. C. DeYoung

R. C. DeYoung, Assistant Director
for Light Water Reactors
Division of Project Management

Enclosure:

Diablo Canyon Seismic
Evaluation

ms 3/4

OFFICE >	DPM:LWR #3	DPM:LWR #3	DPM:A/D			
SURNAME >	DATLison:mjff	ODPar	R. C. DeYoung			
DATE >	3/4/76	3/5/76	3/8/76			

ENCLOSURE

DIABLO CANYON SEISMIC DESIGN EVALUATION

The Diablo Canyon Nuclear Power Plant is located on the coast about 12 miles from San Luis Obispo, California. Construction is nearly completed for the first of the two units at this site. The owner, Pacific Gas and Electric Company, applied for an operating license in 1973. The Commission's staff is currently evaluating the operating license application. This evaluation, which is now nearing completion, has been delayed nearly two years by considerations associated with the Hosgri fault.

Construction permits were issued in 1968 and 1970 for Units 1 and 2, respectively, at the Diablo Canyon site. Based on the investigations conducted at that time the plant was designed to withstand the following earthquakes:

- (1) A great earthquake of magnitude 8.5 along the San Andreas fault 48 miles from the plant.
- (2) A major earthquake of magnitude 7.25 along the Nacimiento fault 20 miles from the plant.
- (3) A major earthquake of magnitude 7.5 along the off-shore extension of the Santa Ynez fault 50 miles from the plant.
- (4) An aftershock of magnitude 6.75 not associated with a known fault 0 miles from the plant.

After the construction permits were issued, offshore investigations conducted by Shell Oil Company showed the existence of a fault which had previously been unmapped. This is the Hosgri fault which runs offshore from the vicinity of Point Sal on the south to Point San Simcon on the north and passes within about 3 1/2 miles of the Diablo Canyon Nuclear Power Plant at its closest approach.

Since the beginning of the operating license review, Pacific Gas and Electric Company has conducted additional investigations and submitted extensive information on the characteristics of the fault, its capabilities for producing earthquakes and the ability of the plant to withstand earthquakes which are more severe than those considered in the original design. The U. S. Geological Survey has also conducted extensive investigations concerning the characteristics and capabilities of the Hosgri fault. The staff has not yet made final conclusions on the capabilities of this fault for producing earthquakes or the acceptability of the plant's seismic design.

In evaluating these matters the staff has the assistance of its consultants, including the U. S. Geological Survey. When the staff's evaluation is completed these matters must be considered by other bodies before an operating license can be issued. They will first be evaluated by the Advisory Committee on Reactor Safeguards. Then the Atomic Safety and Licensing Board will hold public hearings near the plant site. At these hearings the Board will consider the evidence and recommendations presented by Pacific Gas and Electric Company, the Commission's staff, the Advisory Committee on Reactor Safeguards and other parties, including the State of California and interested citizens, before making a decision concerning an operating license.



2-20-76

Nuclear Regulatory Commission - Clear of,
Washington, D.C. 20555

Commissioners -

In relation to the proposed operation of the Nuclear-Power-Plant at Diablo Canyon, California I would like to share my feelings with you on this matter.

That plant is a potential deadly menace. Allowing a nuclear power plant to operate so near as $2\frac{1}{2}$ miles from a major active geological fault is about like flying a kite during a thunderstorm and hoping to not get ZAPPED! ABSURD!

You may not have heard but last week the cooling tank in the plant malfunctioned during testing. You can be assured of plenty of public support for your action to deny the Diablo plant to operate. Or well see you on the other side of the Galaxy one day as you approve. This

IS A life and Death matter
to we who reside on the
Central Coast of the great
State of California.

For safe clean energy

Vincent A. Hill

Kim L. Hill

330 PINAL

ORCUTT, CA. 93154

No. **76-1275**Logging Date **2/25/76**

NRC SECRETARIAT

TO: ☐ Commissioner _____ Date **2/25/76**
☒ Exec. Dir./Oper. _____ ☐ Gen. Counsel
☐ Cong. Liaison _____ ☐ Solicitor
☐ Public Affairs _____ ☐ Secretary
☐ _____

Incoming: **Vincent A. Hill, 330 PINAL, Orcutt,**
From: **Ca. 93454**

To: **Commissioners** Date **2/20**

Subject: **Proposed operation of nuclear plant in**
Diablo Canyon.

- ☐ Prepare reply for signature of:
- ☐ Chairman
 - ☐ Commissioner _____
 - ☐ EDO, GC, CL, SOL, PA, SECY
 - ☐ Signature block omitted
 - ☐ _____
 - ☐ Return original of incoming with response

- ☒ For direct reply* **SUSPENSE: March 16**
- ☐ For appropriate action
- ☐ For information
- ☐ For recommendation

Rec'd Off. Dir. _____
Date **2/26/76**
Time **11:00**

Remarks: **Cy of incoming to Cmrs., D&SS.**

For the Commission: **White**

Send three (3) copies of reply to Secy Mail Facility

432

1. 2000
 2. 2000
 3. 2000

FROM

Vincent A. Hill

CONTROL NUMBER

9872

FILE LOCATION

TO

NRC

DATE OF DOCUMENT

2-20-76

ACTION COMPLETION DEADLINE

3-16-76

ACTION PROCESSING DATES

Acknowledged _____

Interim Reply _____

Final

15/12/76, 3/1/76

PREPARE FOR SIGNATURE OF:

Chairman_____
Director of Regulation

X Ruscho

DESCRIPTION

Ltr.

☐ Original☒ Copy☐ Other

Opposes operation of Diablo Canyon Nuclear Power Plant

REMARKS

LPRY

BRCX 76-1275

REFERRED TO

DATE

IS NOTIFICATION TO THE JCAE

Rusche f/action

2-27-76

RECOMMENDED? _____

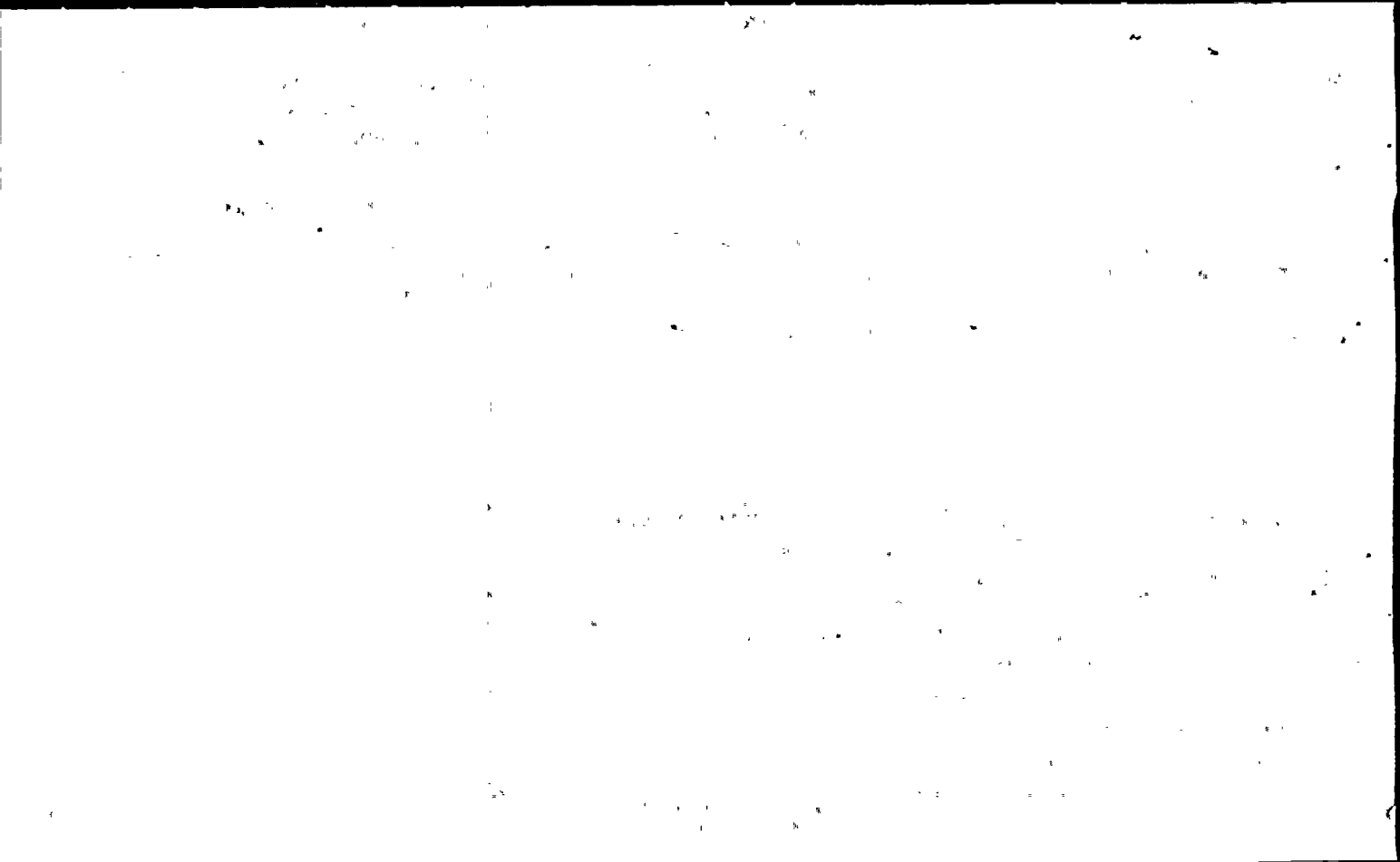
Cys: CAGG

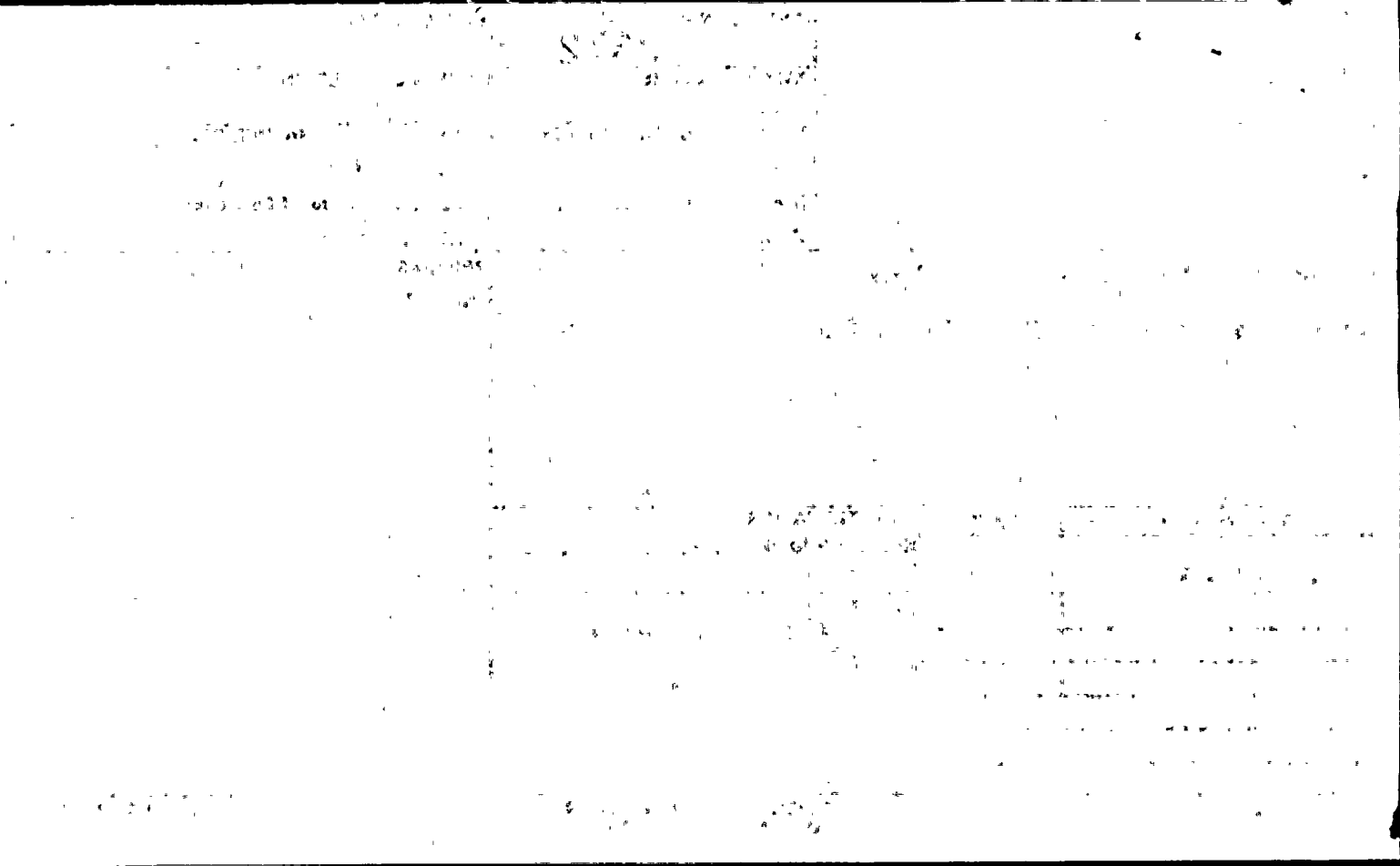
Docket No. 50-275

PDR

323

DIRECTOR OF REGULATION
COMMUNICATIONS CONTROLForm HQ-32 (1-73)
USAEC





FROM Vincent A. Hall	CONTROL NUMBER 9872	FILE LOCATION
TO NRG	DATE OF DOCUMENT 2-20-76	ACTION COMPLETION DEADLINE 3-16-76
	ACTION PROCESSING DATES Acknowledged _____ Interim Reply _____ Final <i>2/27/76</i>	PREPARE FOR SIGNATURE OF: _____ Chairman _____ Director of Regulation X Rusche

DESCRIPTION **Ltr.** ☐ Original ☒ Copy ☐ Other

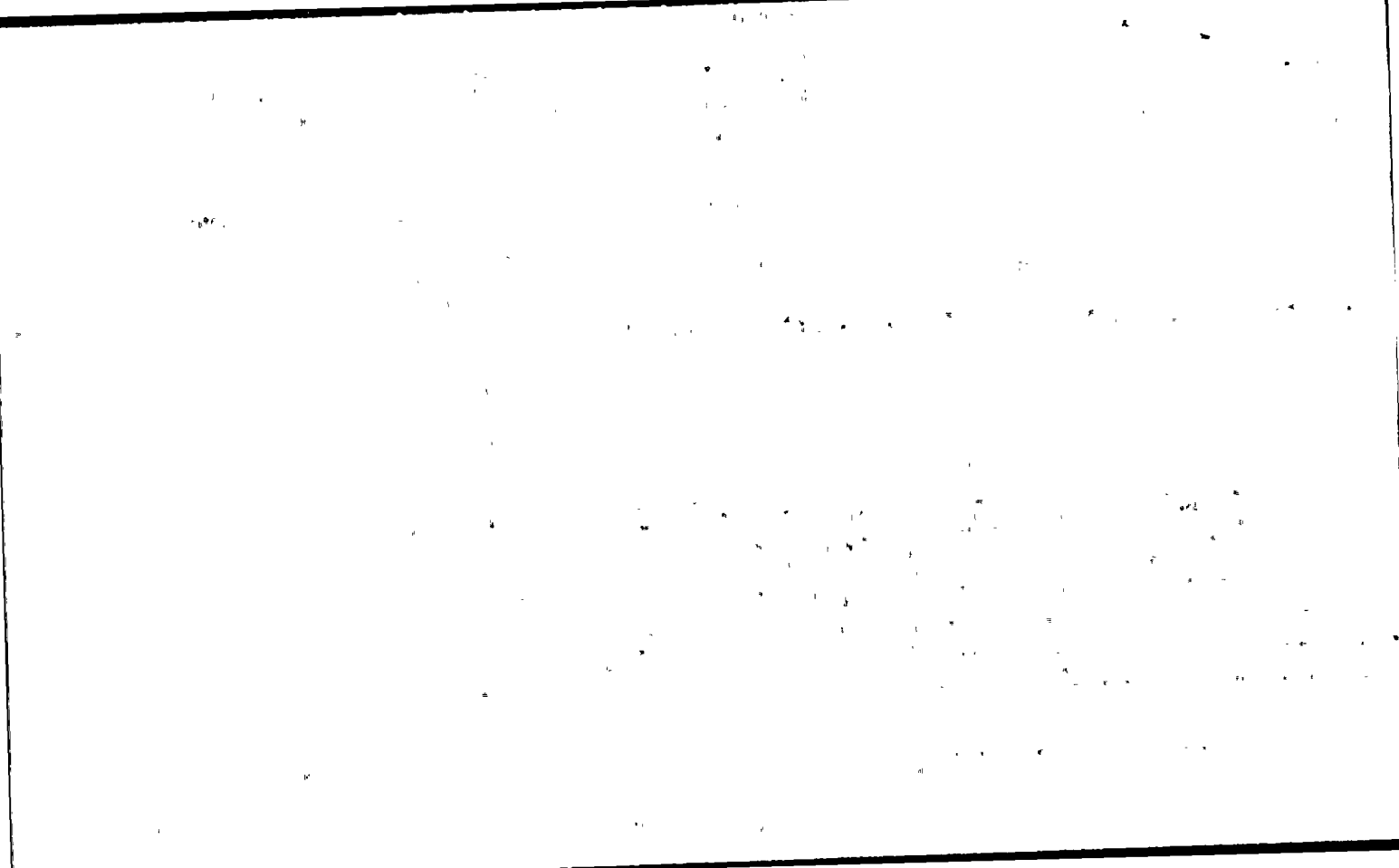
Opposes operation of Diablo Canyon Nuclear Power Plant

REMARKS
LPDRY

REFERRED TO		DATE	IS NOTIFICATION TO THE JCAE RECOMMENDED? _____
Rusche f/action		2-27-76	
			Cys: CASG
			Docket No. 50-275
			PDR 323

DIRECTOR OF REGULATION
COMMUNICATIONS CONTROL

Form HQ-32 (1-73)
USAEC



2-20-76

Nuclear Regulatory Commission - Chair of,
Washington, D.C. 20555

Commissioners

In relation to the proposed
operation of the Nuclear-Power-Plant
At Diablo Canyon, California I would
like to share my feelings with you
on this matter.

That plant is a potential deadly
menace. Allowing a nuclear power
plant to operate so near as $2\frac{1}{2}$ miles
from a major active geological fault
is about like flying a kite during
a thunderstorm and hoping to not
get ZAPPED! ABSURD!

You may not have heard but
last week the cooling tank in the
plant malfunctioned during testing.
You can be assured of plenty of public
support for your action to deny the
Diablo plant to operate. Or well
see you on the other side of the
Galaxy one day as you approve. This

IS A life and Death matter
to we who reside on the
Central Coast of the great
State of California.

FOR safe clean energy

Vincent A. Hill

Kim L. Hill

330 PINAL

ORENT, CA. 93654

