

**START-UP INTERNAL TECHNICAL REVIEW**



**TEST GROUP MANAGER REVIEW AND APPROVAL (1)**



**REVIEW CYCLE (2)**



**JOINT TEST GROUP APPROVAL**

- 1. FINAL STEP FOR SELECTED PRELIMINARY TESTS.**
- 2. JTG MEMBERS, QUALITY ASSURANCE AND OTHERS AS DESIGNATED BY THE TEST GROUP MANAGER.**

**FIGURE 14.2-1**

**REVIEW CYCLE FOR SELECTED  
PRELIMINARY AND ALL  
PREOPERATIONAL TEST PROCEDURES**

**NIAGARA MOHAWK POWER CORPORATION  
NINE MILE POINT-UNIT 2  
FINAL SAFETY ANALYSIS REPORT**

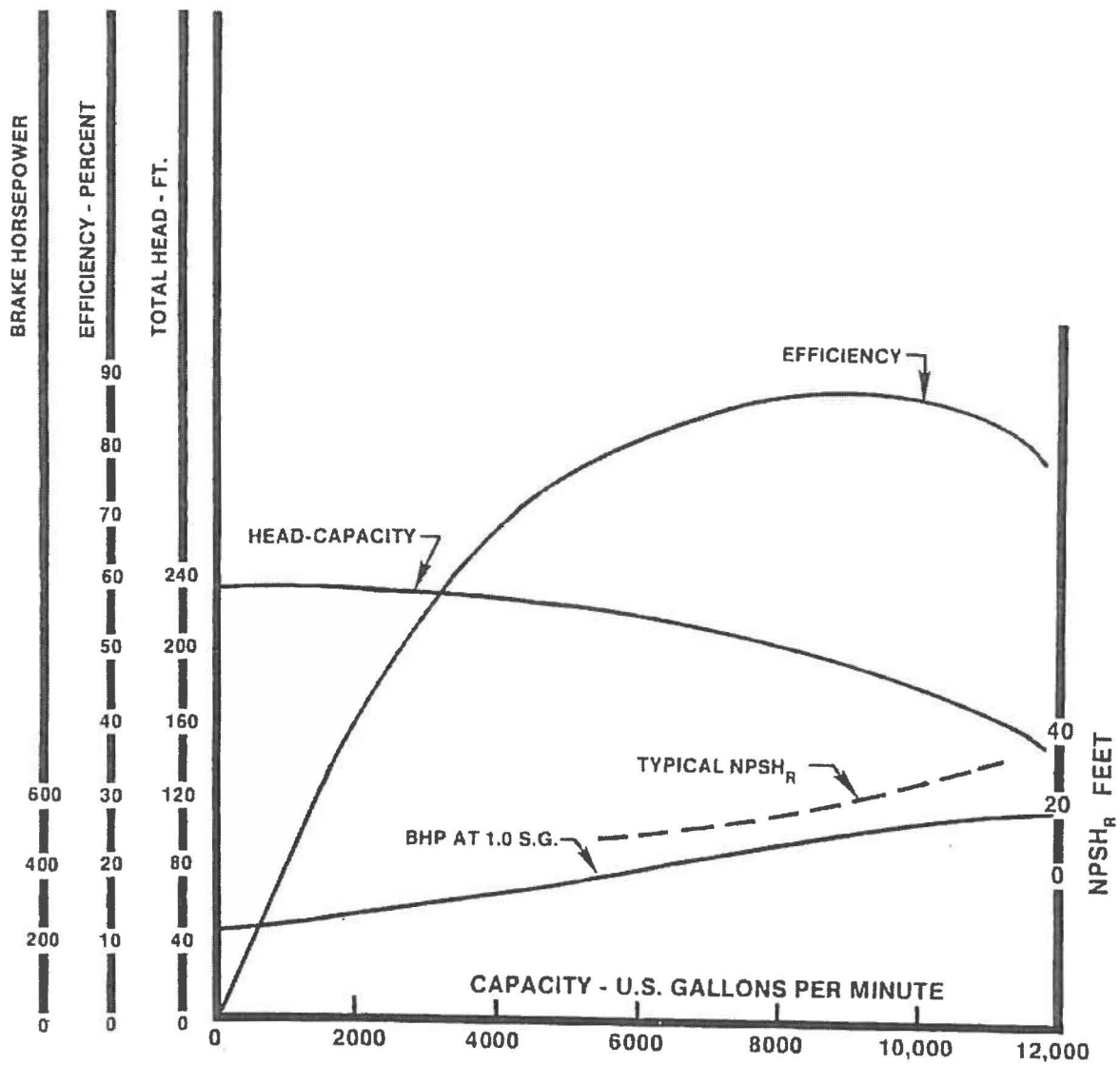


FIGURE 14.2-1b-1

SERVICE WATER PUMP  
CHARACTERISTIC CURVE

NIAGARA MOHAWK POWER CORPORATION  
NINE MILE POINT-UNIT 2  
UPDATED SAFETY ANALYSIS REPORT

**TECHNICAL REVIEW (LEAD STD&A AND POWER ASCENSION MANAGER)**



**STAFF REVIEW (IN ACCORDANCE WITH AP'S)**



**SORC REVIEW AND ACCEPTANCE**



**SRAB REVIEW\***

**APPROVAL BY GENERAL SUPERINTENDENT**

**\*ONLY AS REQUIRED BY THE GENERAL SUPERINTENDENT**

**FIGURE 14.2-2**

**REVIEW CYCLE FOR INITIAL  
STARTUP TEST PROCEDURES**

**NIAGARA MOHAWK POWER CORPORATION  
NINE MILE POINT-UNIT 2  
FINAL SAFETY ANALYSIS REPORT**

**TEST ENGINEER REVIEW**



**TEST GROUP MANAGER/LEAD ENGINEER (1)**



**JOINT TEST GROUP REVIEW AND APPROVAL**



**SORC REVIEW AND ACCEPTANCE OF SYSTEM**



**ACCEPTANCE BY THE STATION SUPERINTENDENT**

**1. FINAL STEP FOR PRELIMINARY TEST RESULTS EXCEPT AS NOTED IN 14.2.5.1**

FIGURE 14.2-3

PRELIMINARY AND PREOPERATIONAL  
TEST RESULTS REVIEW

NIAGARA MOHAWK POWER CORPORATION  
**NINE MILE POINT-UNIT 2**  
FINAL SAFETY ANALYSIS REPORT

**TECHNICAL REVIEW  
AND ACCEPTANCE**

**(GE LEAD STD&A, S.O.M., TECHNICAL SUPT.,  
AND POWER ASCENSION MANAGER)**



**STATION SUPERINTENDENT  
REVIEW AND ACCEPTANCE**



**QUALITY ASSURANCE  
REVIEW AND ACCEPTANCE**



**SORC  
REVIEW AND ACCEPTANCE**



**-----> SRAB\***

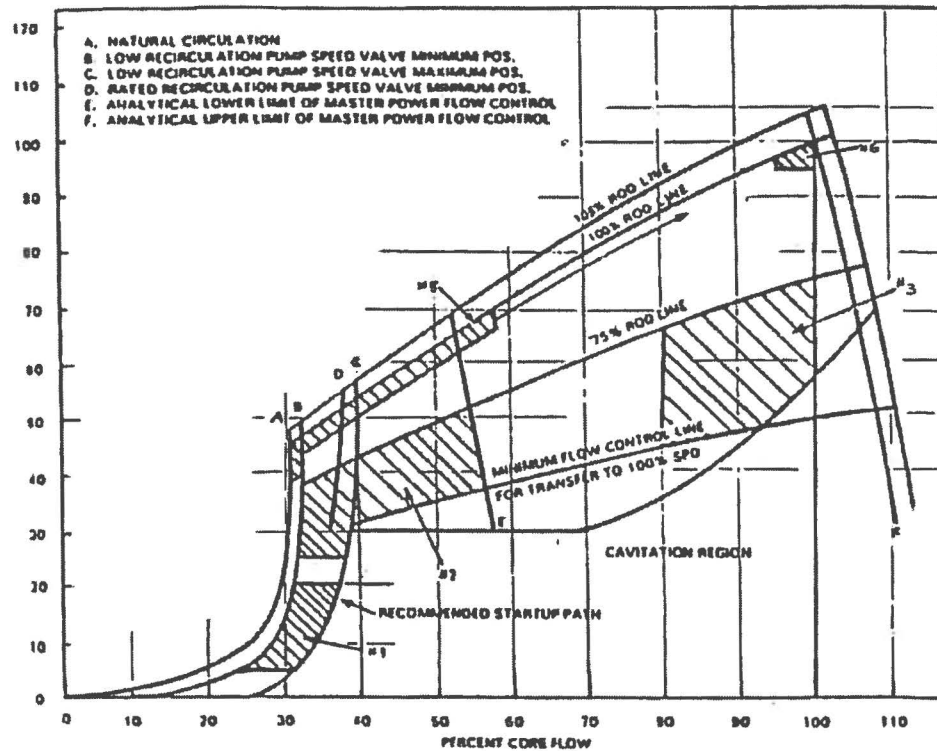
**GENERAL SUPERINTENDENT  
REVIEW AND APPROVAL**

**\*ONLY AS REQUIRED BY THE GENERAL SUPERINTENDENT**

**FIGURE 14.2-4**

**INITIAL STARTUP TEST  
RESULTS REVIEW**

**NIAGARA MOHAWK POWER CORPORATION  
NINE MILE POINT-UNIT 2  
FINAL SAFETY ANALYSIS REPORT**



CONDITION (TC)

- 1 RECIRC PUMPS OPERATING ON LOW FREQUENCY POWER SUPPLY
- 2 BETWEEN 50% AND 75% CONTROL ROD LINES, AT OR BELOW THE ANALYTICAL LOWER LIMIT OF MASTER FLOW CONTROL MODE
- 3 FROM 50% TO 75% CONTROL ROD LINES AND CORE FLOW BETWEEN 80% AND MAXIMUM ALLOWABLE
- 5 WITHIN 8 TO -5% OF THE RATED ROD LINE BETWEEN NATURAL CIRCULATION AND 5% ABOVE THE ANALYTICAL LOWER LIMIT OF MASTER POWER FLOW CONTROL. ALSO FROM THE 100% ROD LINE TO THE 80% ROD LINE AT NATURAL CIRCULATION.
- 6 WITHIN 0 TO -5% OF RATED THERMAL POWER, AND WITHIN 5% OF RATED CORE FLOW RATE

FIGURE 14.2-5

TEST CONDITION REGION DEFINITION

NIAGARA MOHAWK POWER CORPORATION  
NINE MILE POINT-UNIT 2  
UPDATED SAFETY ANALYSIS REPORT

**THIS FIGURE  
HAS BEEN DELETED**

FIGURE 14.2-6

NIAGARA MOHAWK POWER CORPORATION  
**NINE MILE POINT-UNIT 2**  
FINAL SAFETY ANALYSIS REPORT

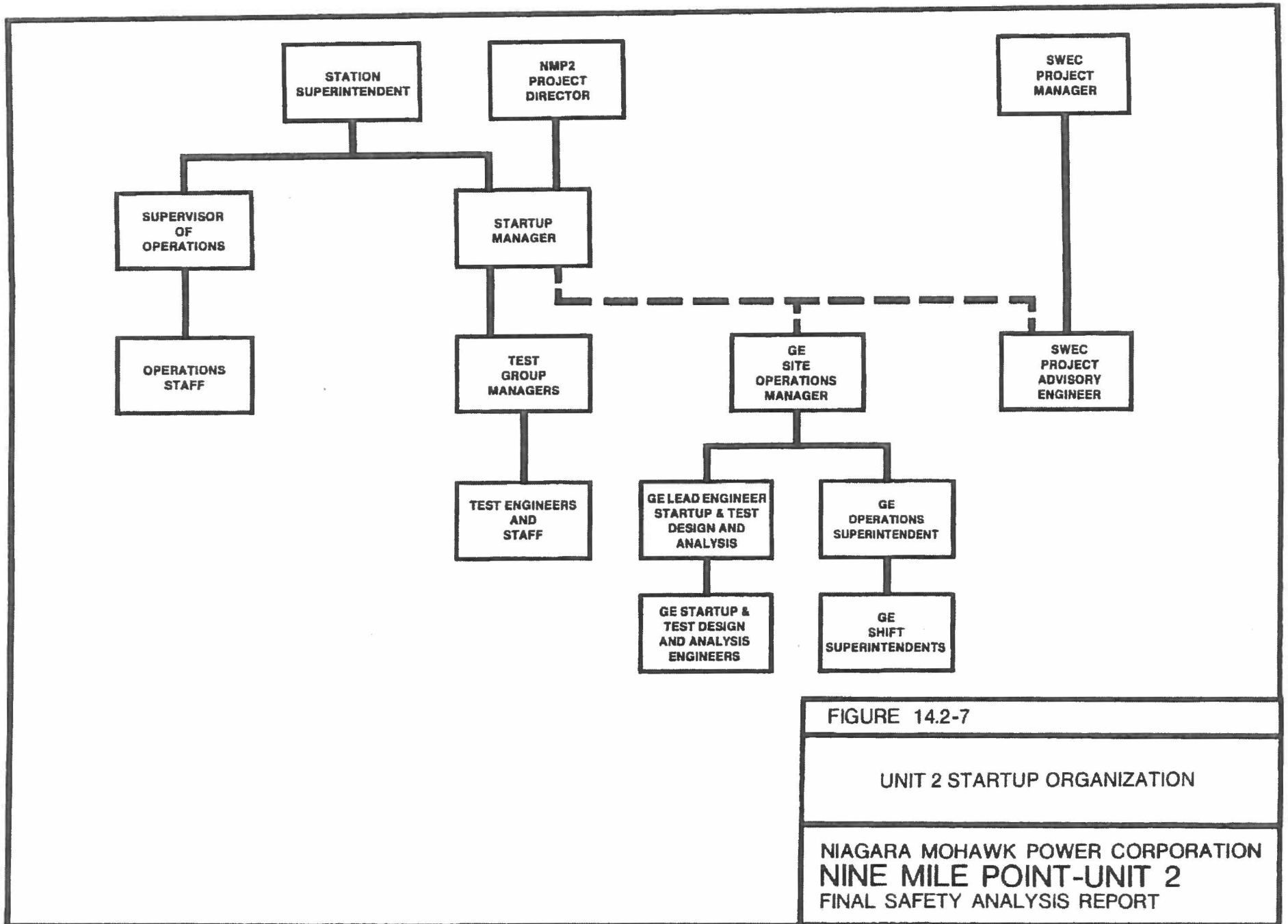


FIGURE 14.2-7

UNIT 2 STARTUP ORGANIZATION

NIAGARA MOHAWK POWER CORPORATION  
 NINE MILE POINT-UNIT 2  
 FINAL SAFETY ANALYSIS REPORT



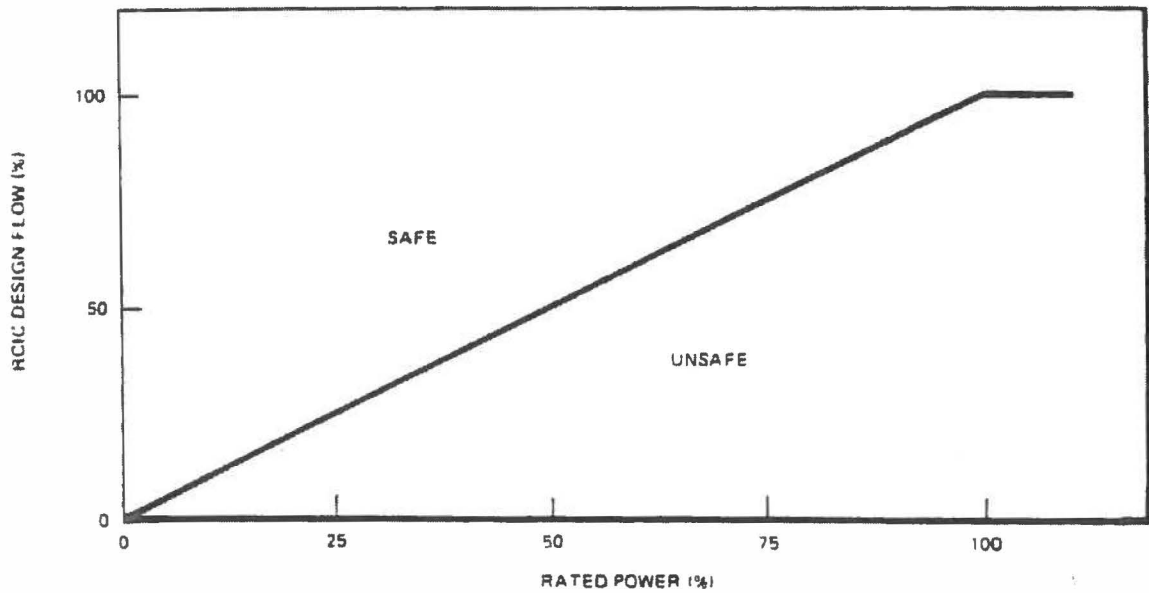
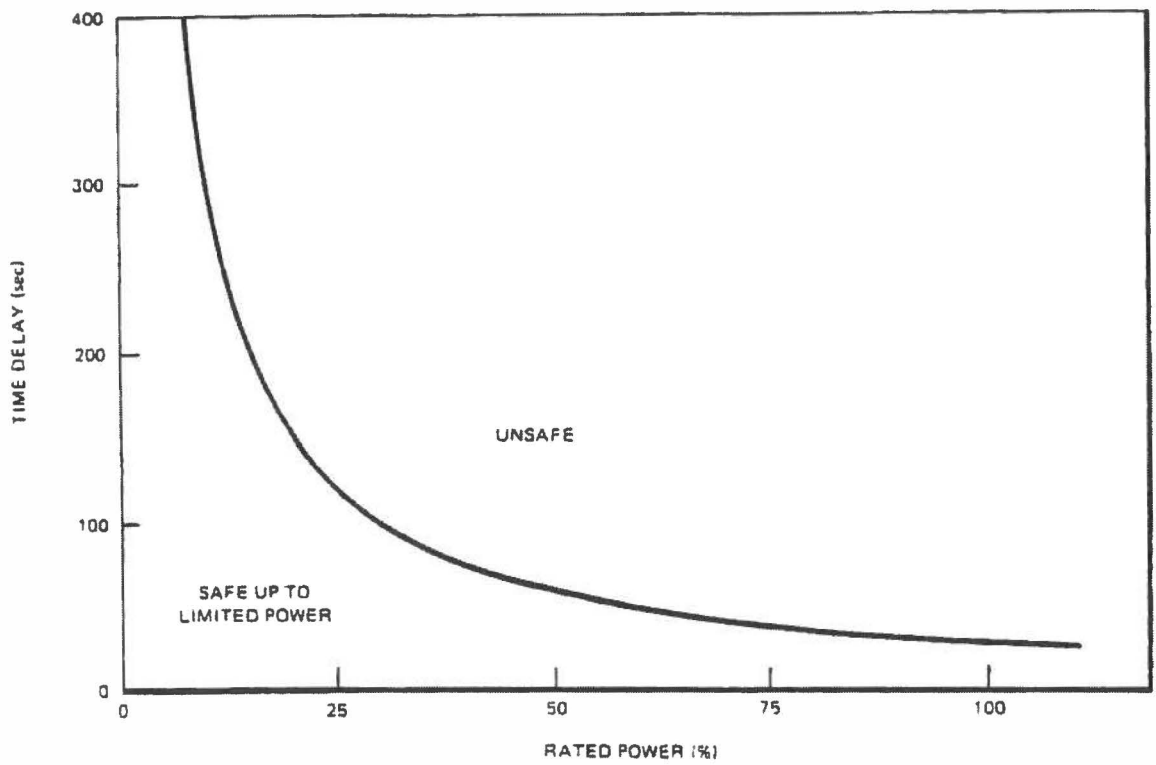


FIGURE 14.2-213-1

RCIC ACCEPTANCE CRITERIA CURVES FOR  
CAPACITY AND ACTUATION TIME

NIAGARA MOHAWK POWER CORPORATION  
NINE MILE POINT-UNIT 2  
FINAL SAFETY ANALYSIS REPORT

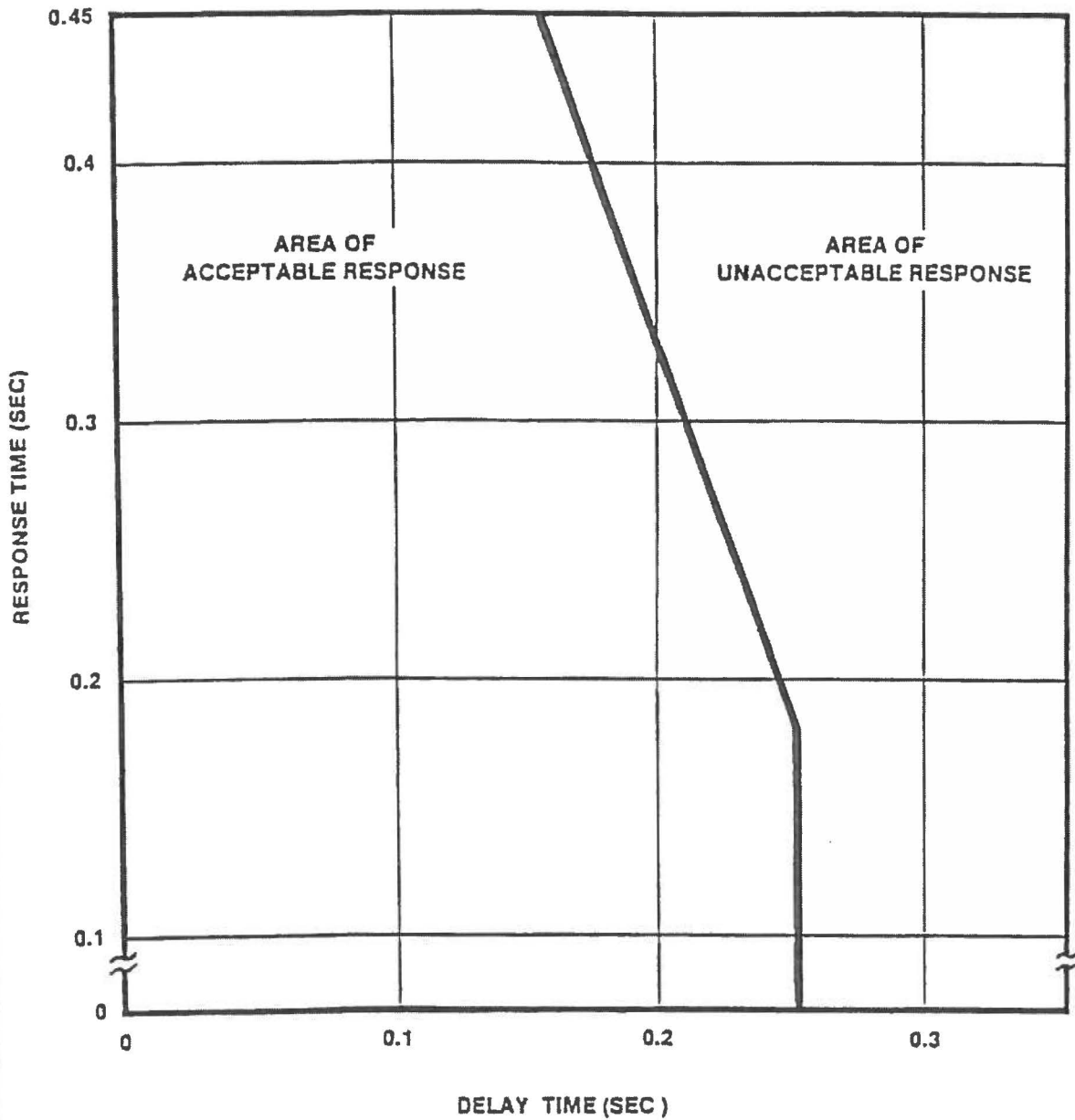


FIGURE 14.2-233-1  
 TRADEOFF CURVE FOR STEP  
 SIZES 0.2% TO 0.5%  
 NIAGARA MOHAWK POWER CORPORATION  
 NINE MILE POINT- UNIT 2  
 UPDATED SAFETY ANALYSIS REPORT

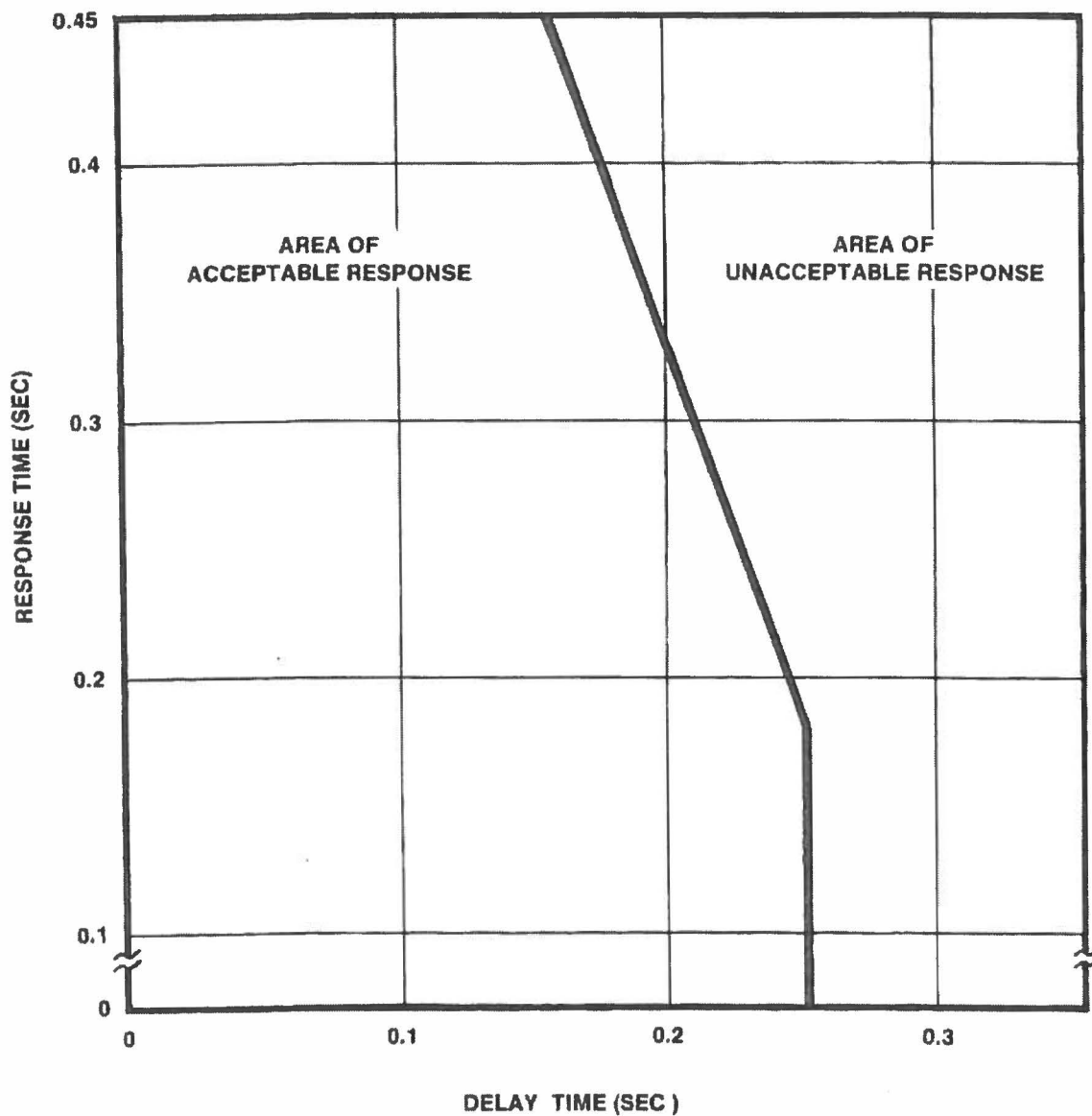


FIGURE 14.2-234-1

TRADEOFF CURVE FOR STEP  
SIZES 0.2% TO 0.3%

NIAGARA MOHAWK POWER CORPORATION  
NINE MILE POINT-UNIT 2  
FINAL SAFETY ANALYSIS REPORT

**TO BE PROVIDED IN  
GE TEST INSTRUCTIONS**

**FIGURE 14.2-239-1**

**TWO-PUMP TRIP  
COASTDOWN CURVES**

**NIAGARA MOHAWK POWER CORPORATION  
NINE MILE POINT-UNIT 2  
FINAL SAFETY ANALYSIS REPORT**