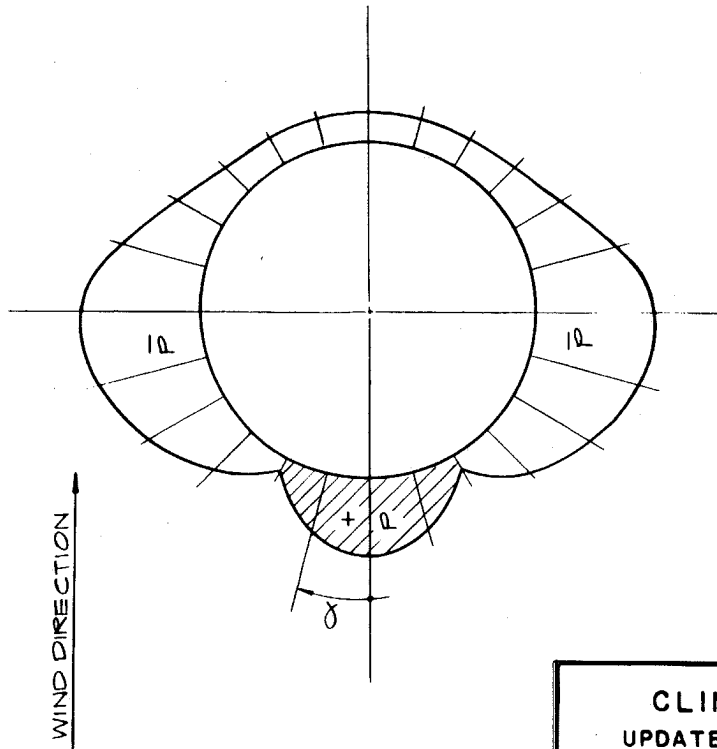


HEMISPHERICAL SHELL



CYLINDRICAL SHELL

α°	CYLINDRICAL SHELL C_p	HEMISPHERICAL SHELL C_p
0	1.0	1.0
15	0.8	0.9
30	0.1	0.5
45	-0.7	-0.1
60	-1.2	-0.7
75	-1.6	-1.1
90	-1.7	-1.2
105	-1.2	-1.0
120	-0.7	-0.6
135	-0.5	-0.2
150	-0.4	0.1
165	-0.4	0.3
180	-0.4	0.4

$P = C_p \times q$

WHERE;

P - DESIGN PRESSURE

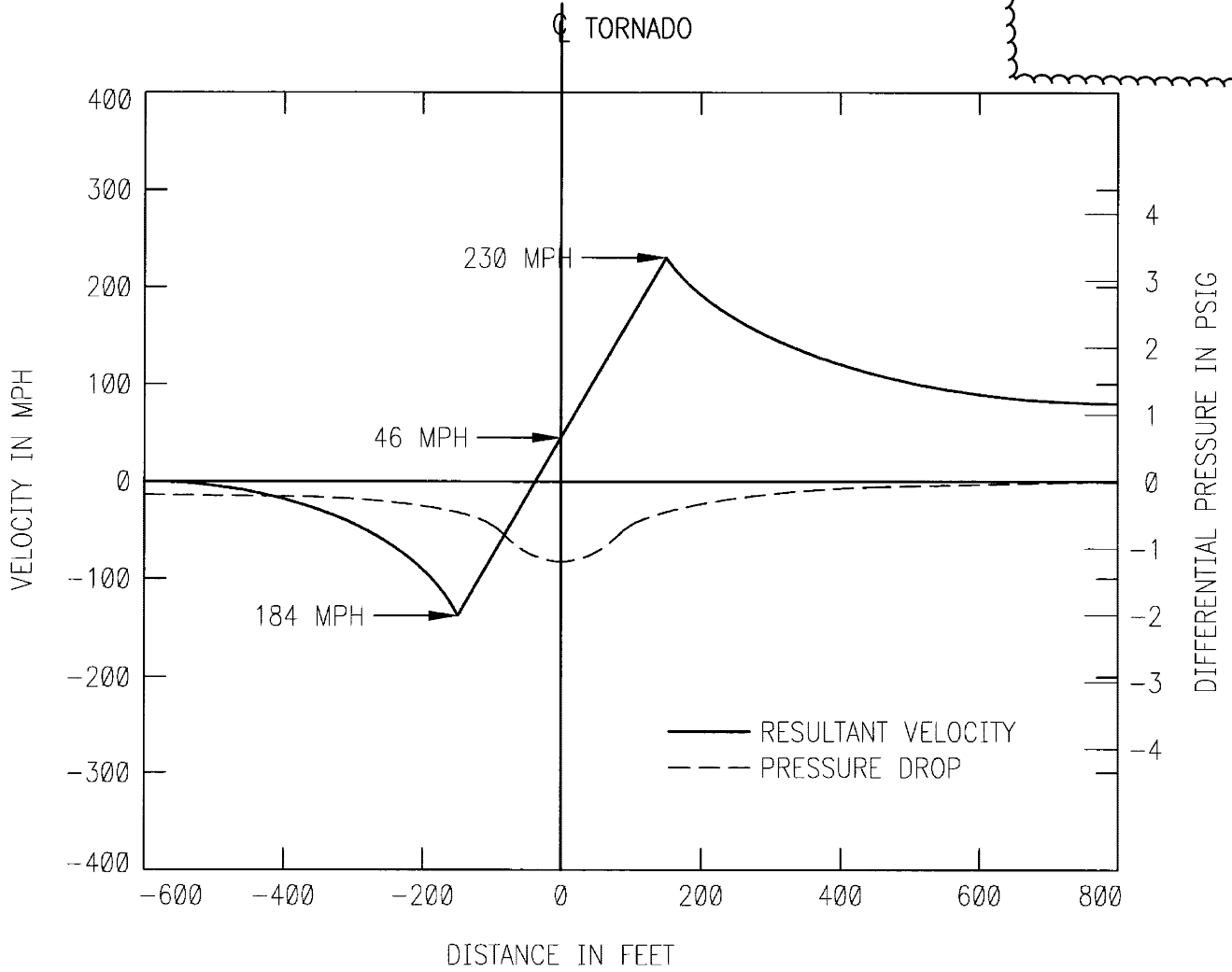
C_p - COEFFICIENT FOR DESIGN PRESSURE

q - DYNAMIC PRESSURE

CLINTON POWER STATION
UPDATED SAFETY ANALYSIS REPORT

FIGURE 3.3-2

WIND PRESSURE DISTRIBUTION
FOR CONTAINMENT STRUCTURES

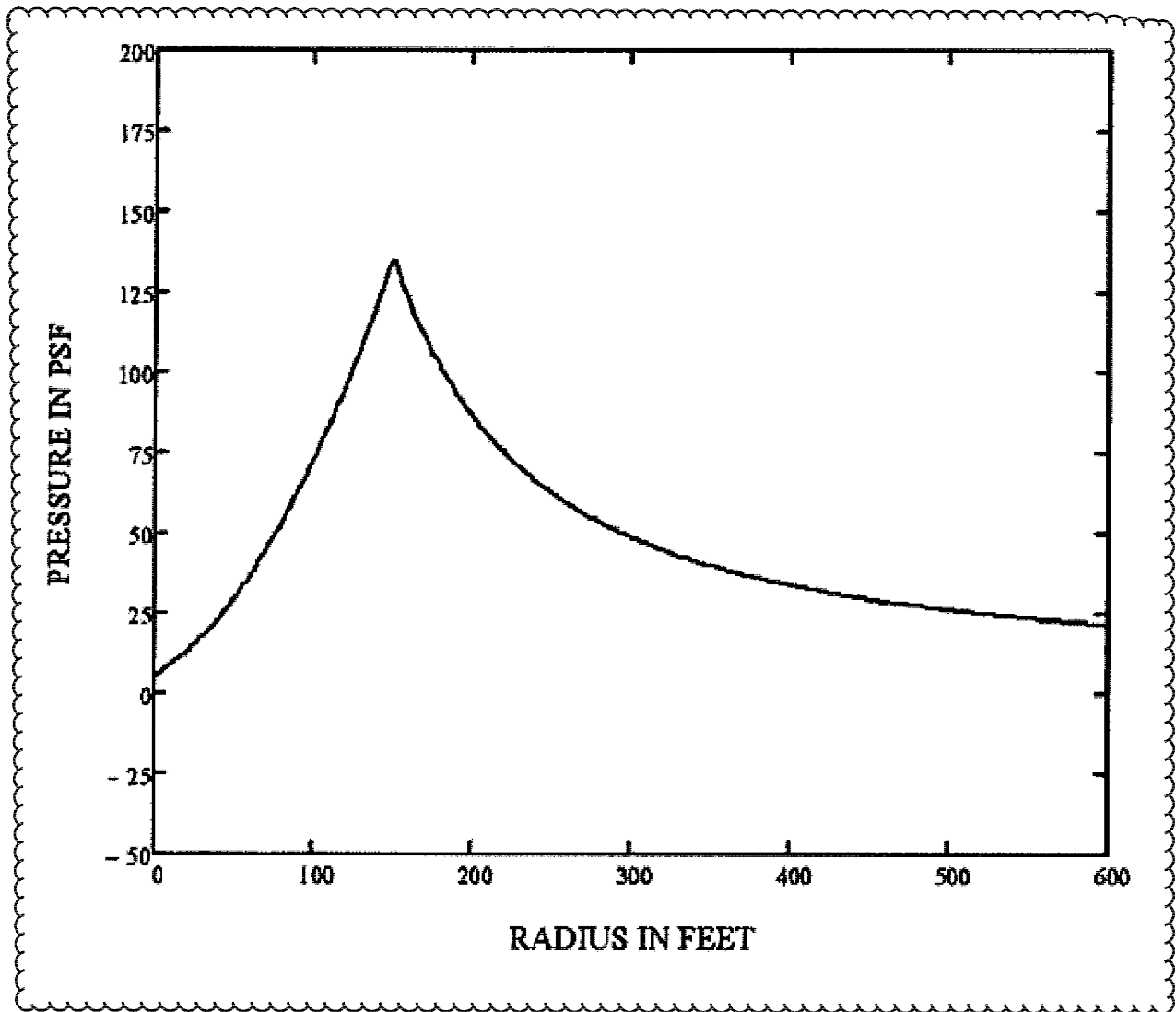


TRANSLATION VELOCITY = 46 MPH
TANGENTIAL VELOCITY = 184 MPH AT RADIUS OF 150 FT
PRESSURE DROP = 1.2 PSI WITHIN 2.4 SECONDS

CLINTON POWER STATION
UPDATED SAFETY ANALYSIS REPORT

FIGURE 3.3-3

PRESSURE AND VELOCITY
DISTRIBUTION FOR
THE DESIGN-BASIS TORNADO

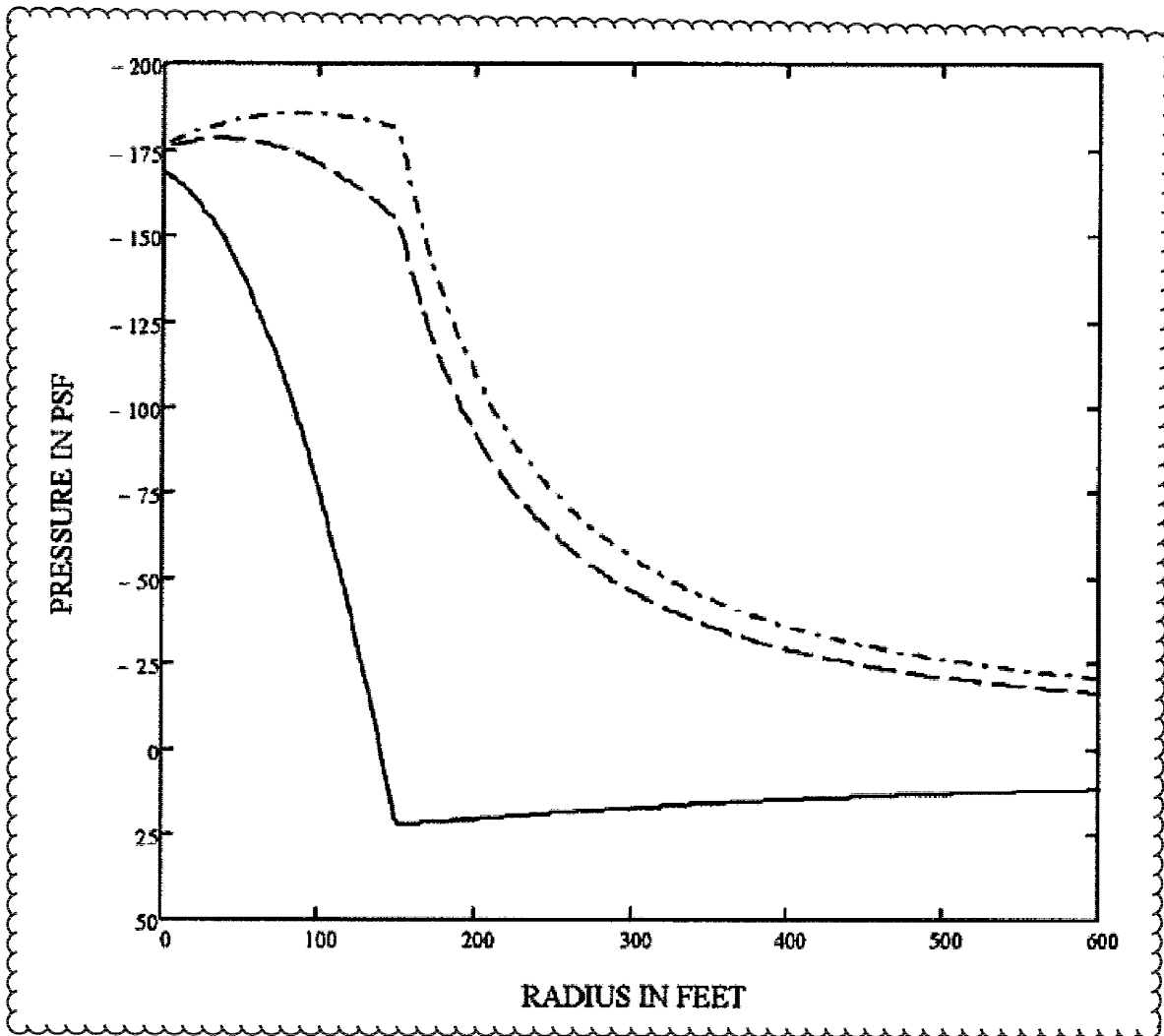


TRANSLATION VELOCITY = 46 MPH
TANGENTIAL VELOCITY = 184 MPH AT RADIUS OF 150 FT

CLINTON POWER STATION
UPDATED SAFETY ANALYSIS REPORT

FIGURE 3.3-4

EFFECTIVE VELOCITY PRESSURE
DISTRIBUTION FOR
THE DESIGN-BASIS TORNADO



KEY

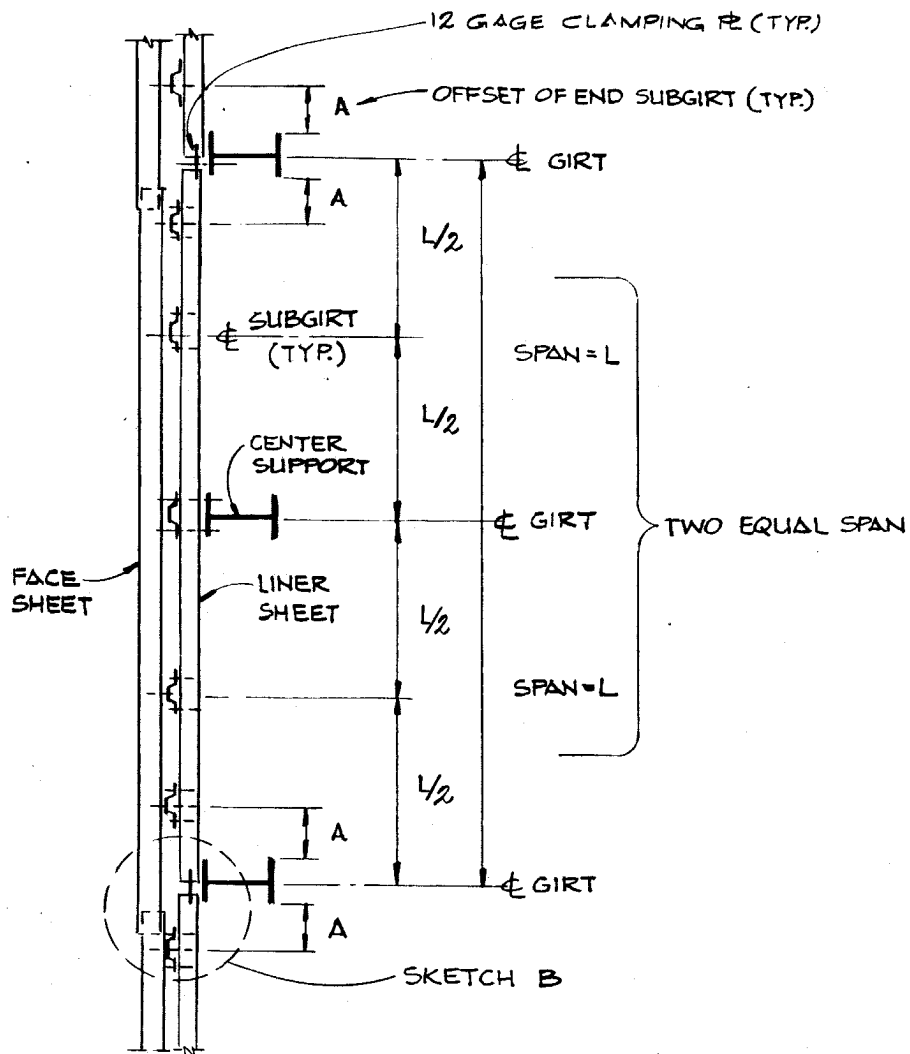
- RESULTANT SURFACE PRESSURE FOR WINDWARD WALLS
- - - - RESULTANT SURFACE PRESSURE FOR LEEWARD WALLS
- · - · - RESULTANT SURFACE PRESSURE FOR SIDEWALLS AND ROOFS

TRANSLATION VELOCITY = 46 MPH
TANGENTIAL VELOCITY = 184 MPH AT RADIUS OF 150 FT
PRESSURE DROP = 1.2 PSI WITHIN 2.4 SECONDS

CLINTON POWER STATION
UPDATED SAFETY ANALYSIS REPORT

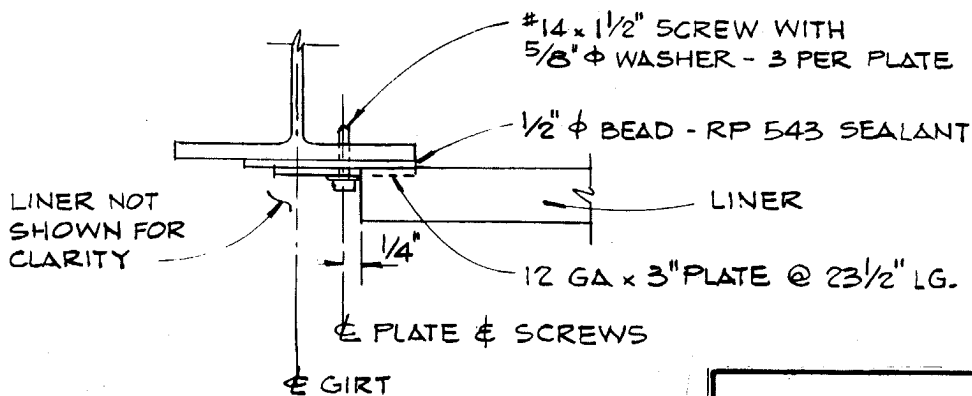
FIGURE 3.3-5

RESULTANT SURFACE PRESSURES FOR
THE DESIGN-BASIS TORNADO FOR
RECTANGULAR FLAT-TOPPED STRUCTURES



INSULATION NOT SHOWN FOR CLARITY

SKETCH A



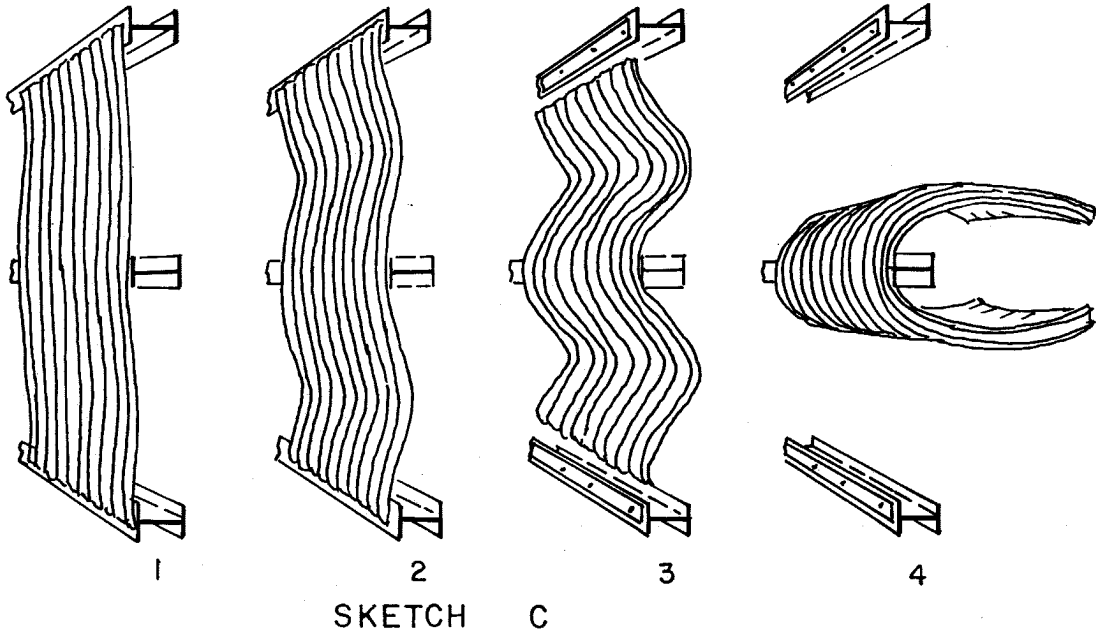
SKETCH B

CLINTON POWER STATION
UPDATED SAFETY ANALYSIS REPORT

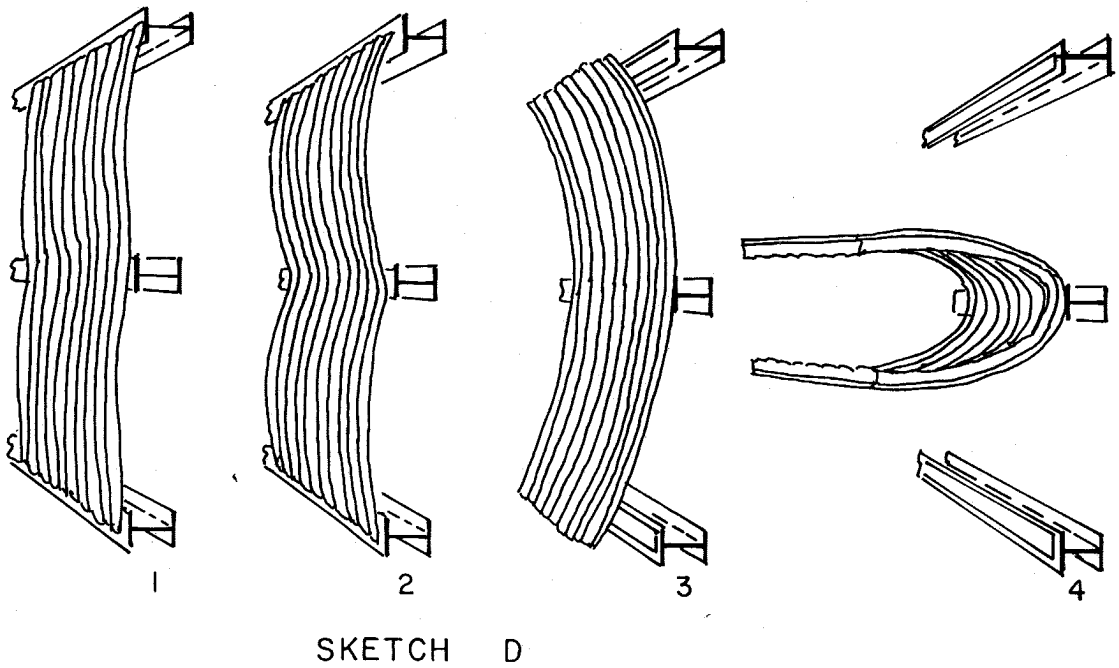
Figure 3.3-6
(Q & R 220.03)

TURBINE BUILDING SIDING
(SKETCHES A & B)

INWARD RELEASE MECHANISM



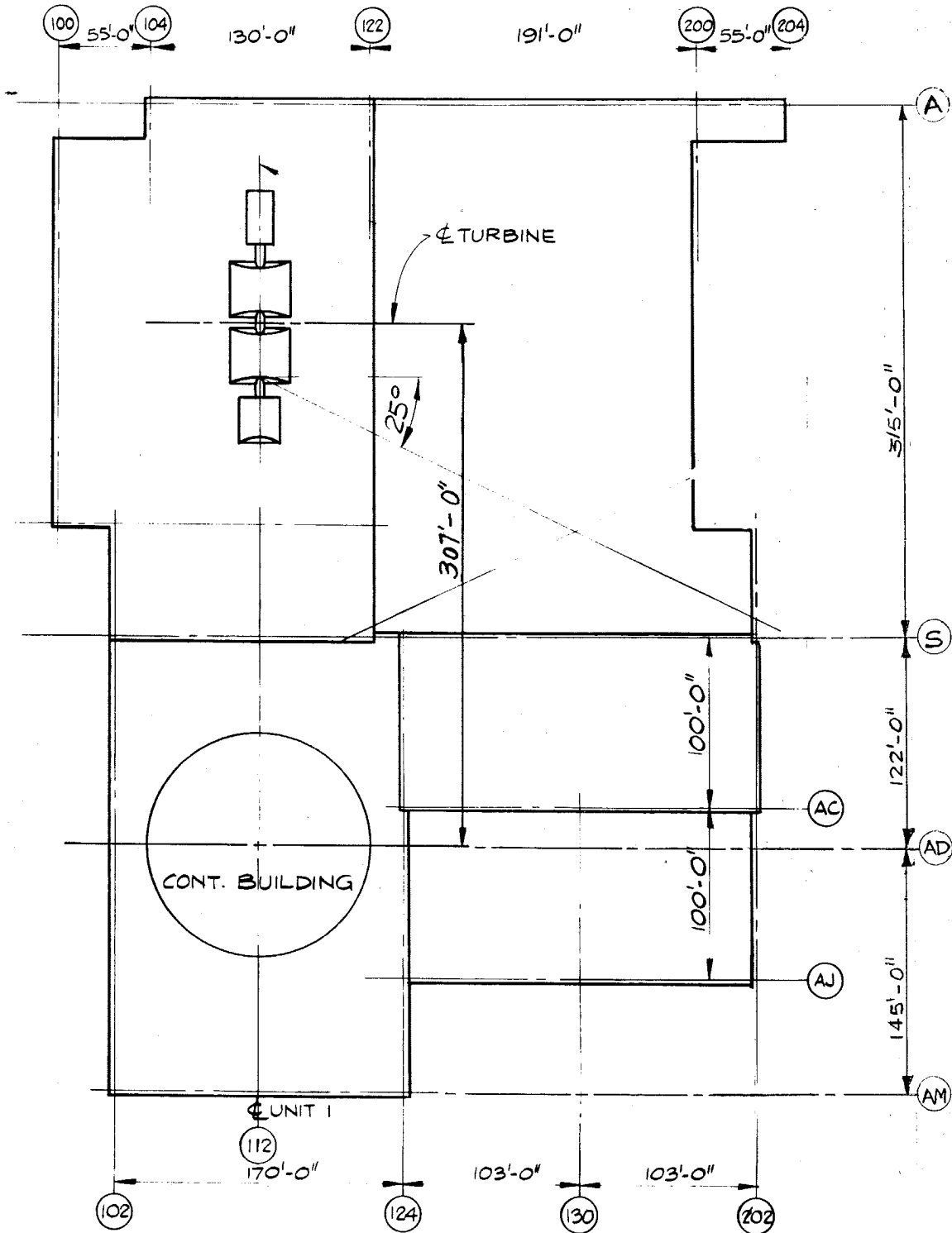
OUTWARD RELEASE MECHANISM



CLINTON POWER STATION
UPDATED SAFETY ANALYSIS REPORT

Figure 3.3-7
(Q & R 220.03)

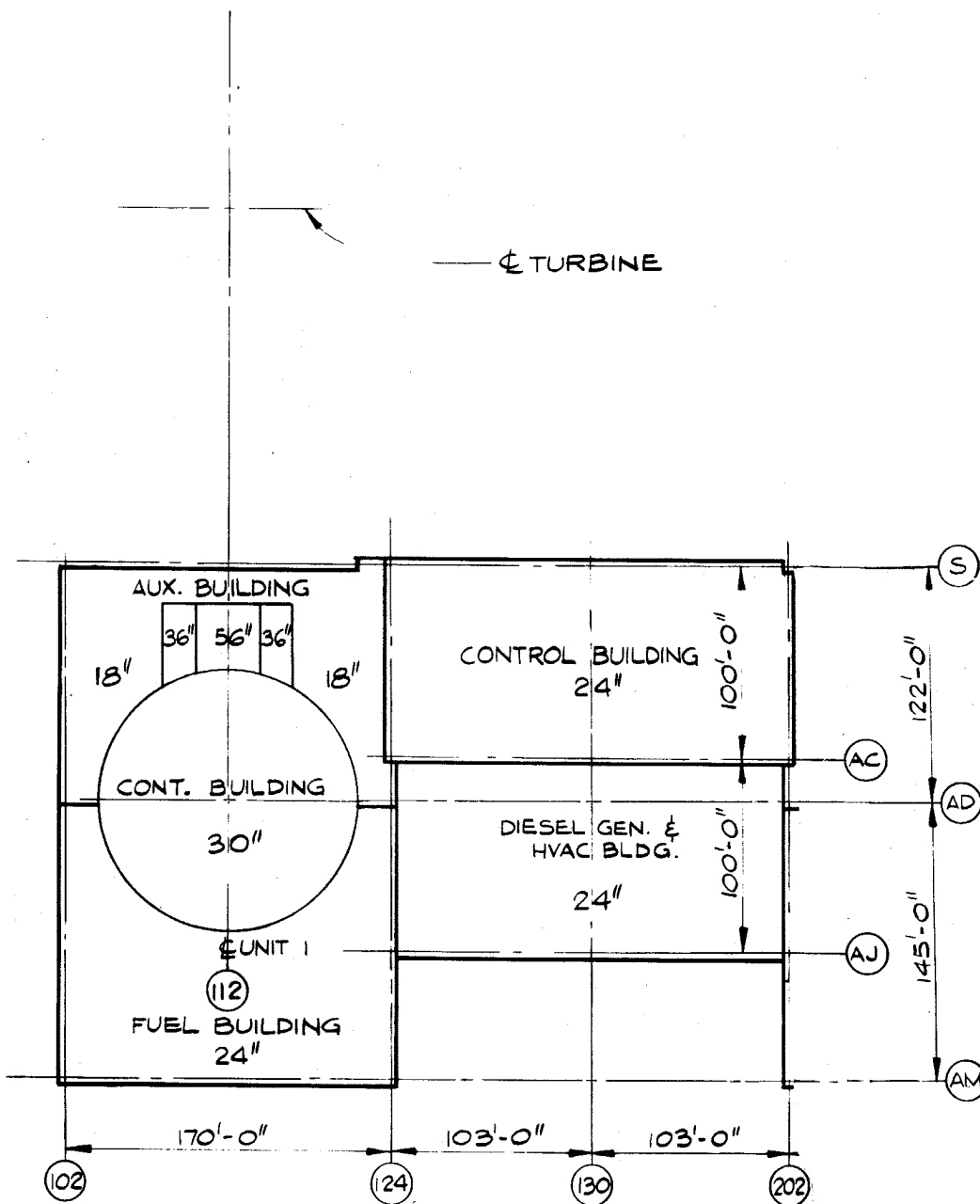
RELEASE MECHANISMS
(SKETCHES C & D)



CLINTON POWER STATION
UPDATED SAFETY ANALYSIS REPORT

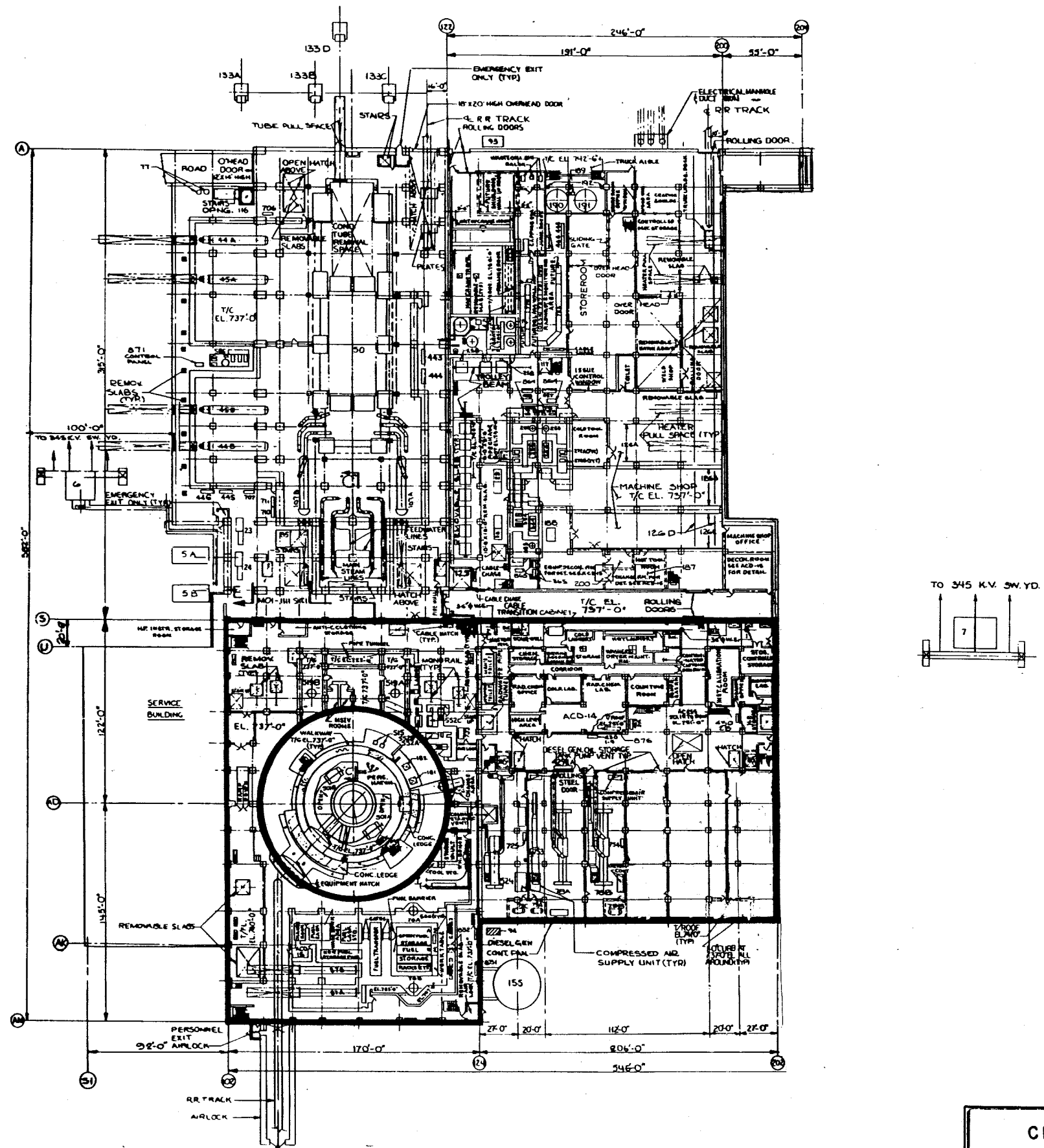
FIGURE 3.5-1

TURBINE ORIENTATION AND LOCATION



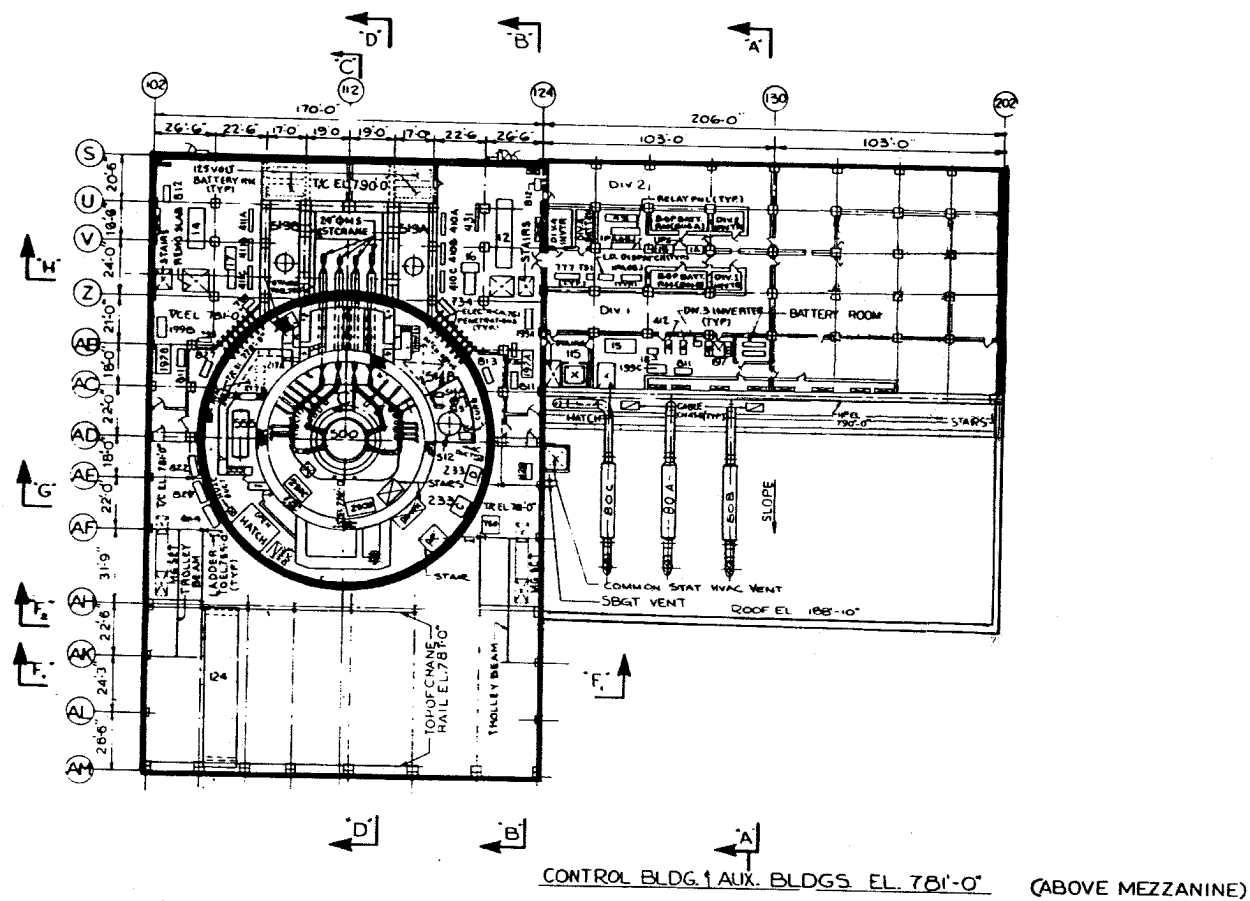
**CLINTON POWER STATION
UPDATED SAFETY ANALYSIS REPORT**

FIGURE 3.5-2
SAFETY RELATED STRUCTURES,
DIMENSION AND ROOF THICKNESS

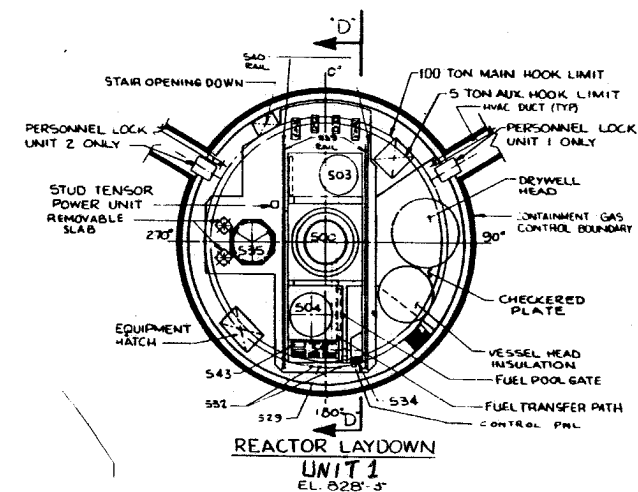
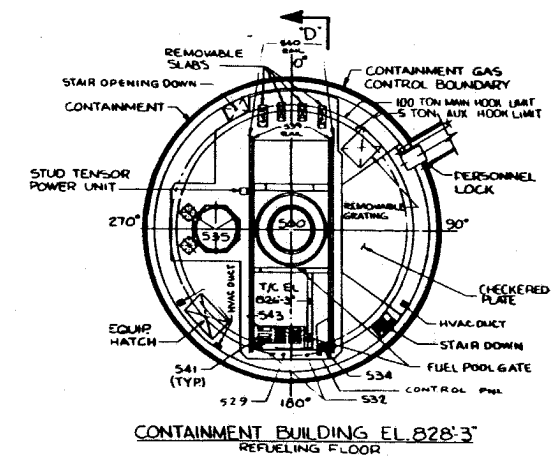


MISSILE PROOF WALLS
EL. 737'-0"

<p>CLINTON POWER STATION UPDATED SAFETY ANALYSIS REPORT</p>
<p>FIGURE 3.5-3 MISSILE PROOF WALLS (SHEET 1 OF 5)</p>

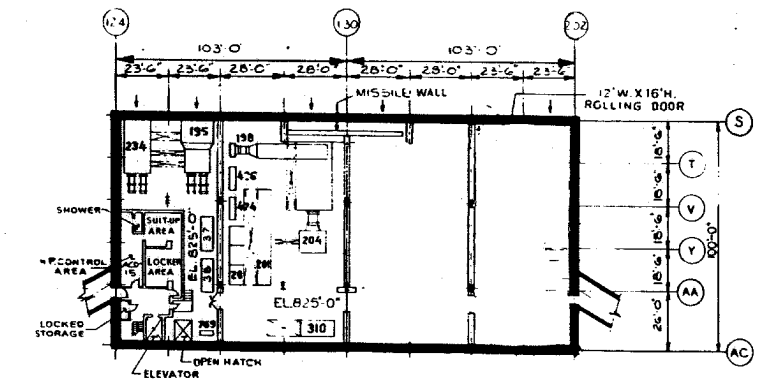
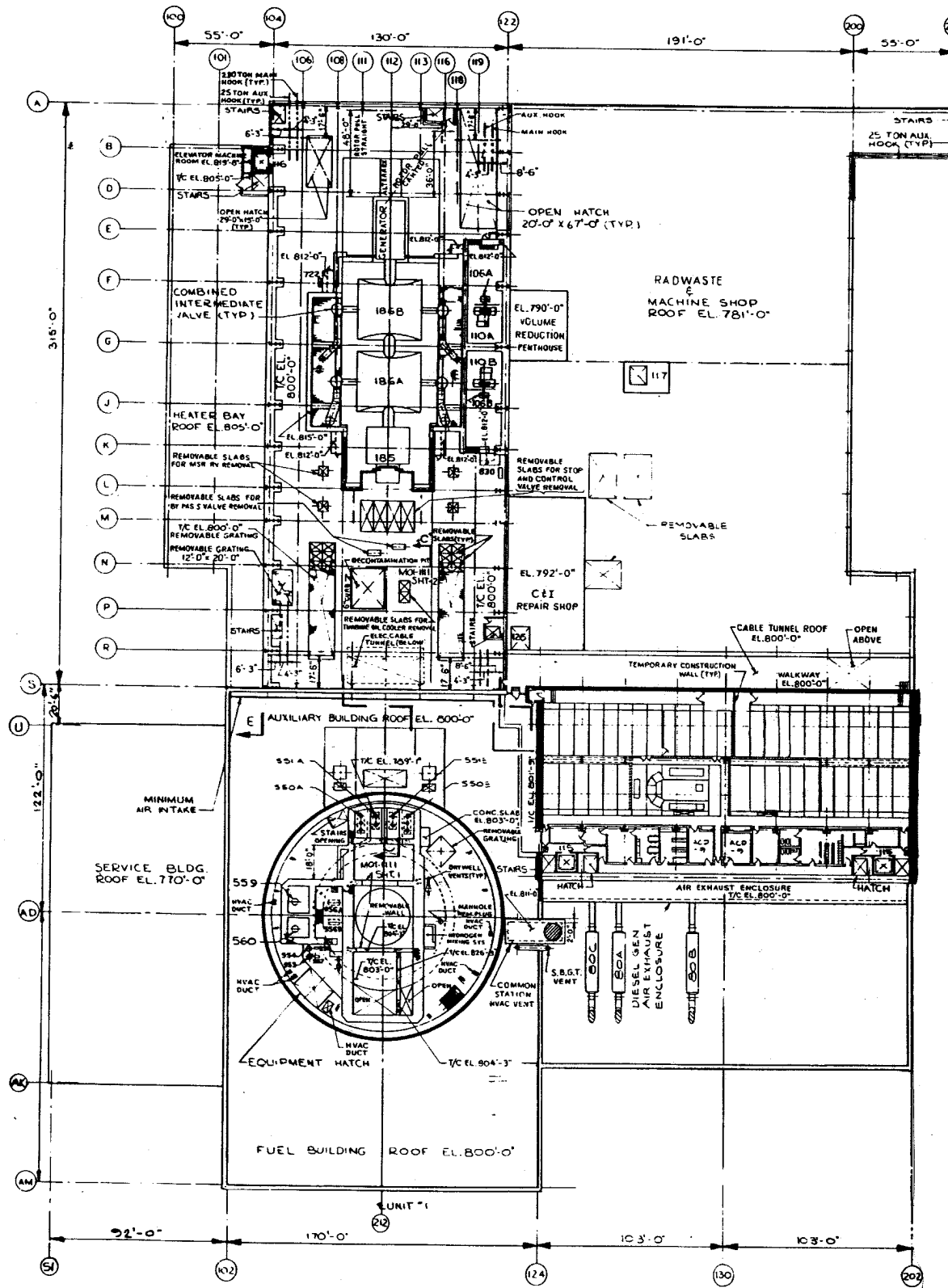


MISSILE PROOF WALLS
EL. 778'-0"



CLINTON POWER STATION
UPDATED SAFETY ANALYSIS REPORT

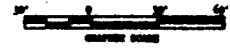
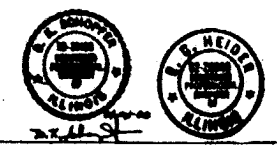
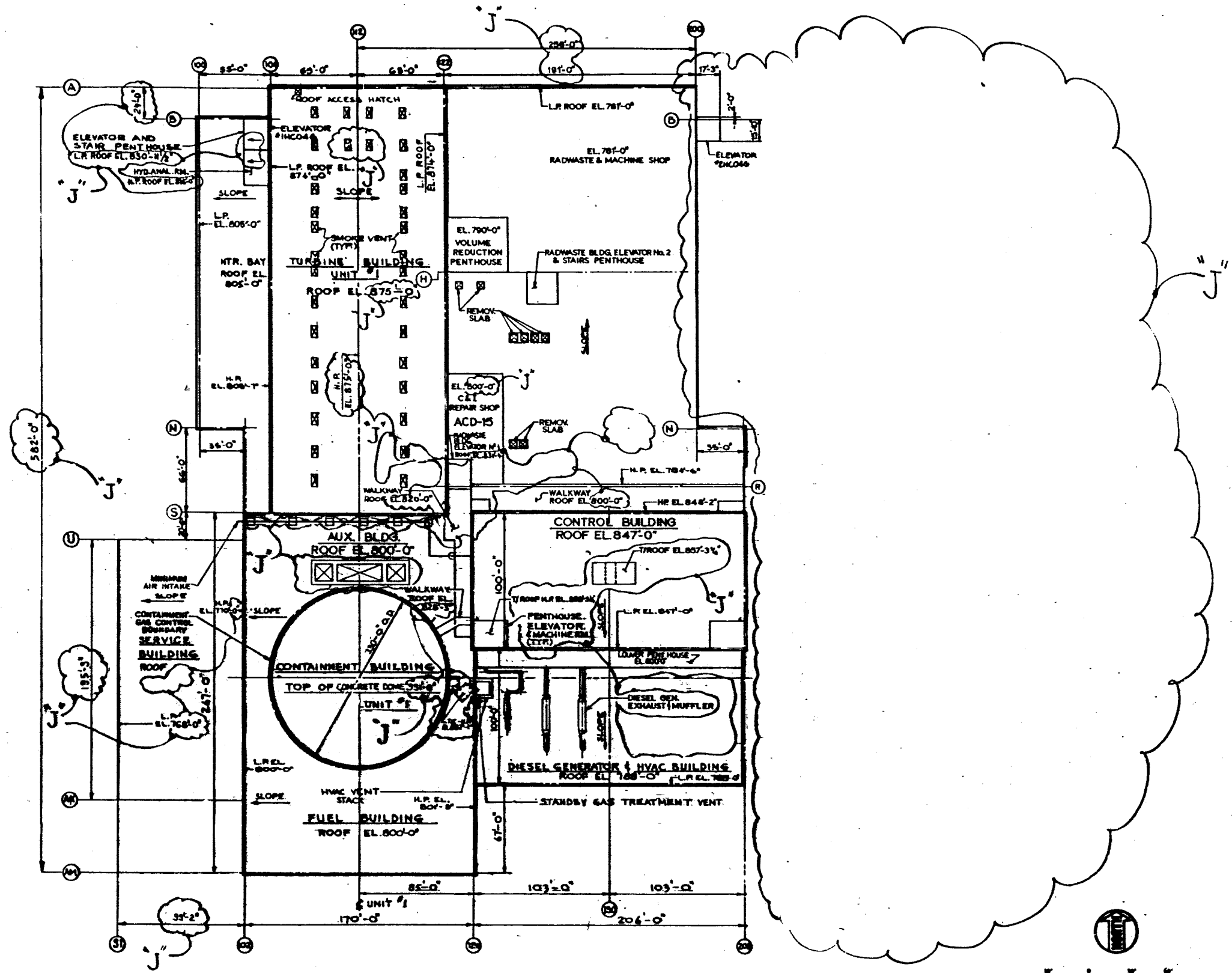
FIGURE 3.5-3
MISSILE PROOF WALLS
(SHEET 3 OF 5)



HVAC FLOOR EL. 825'-0"
(ABOVE CONTROL ROOM)

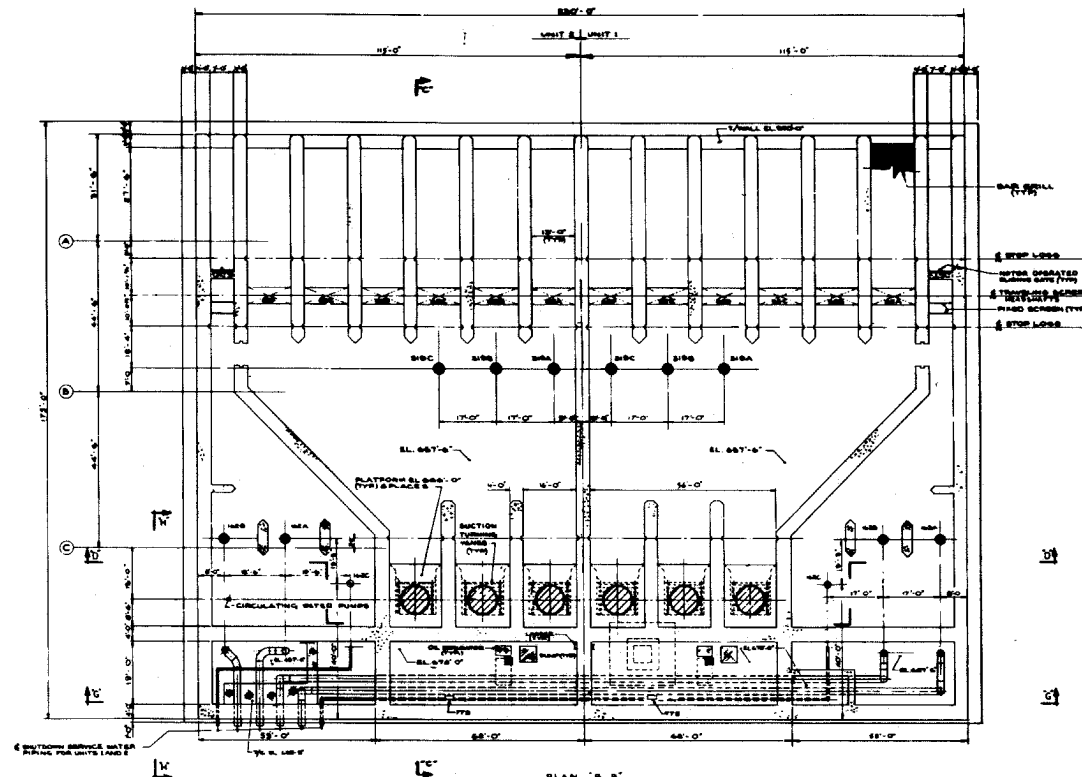
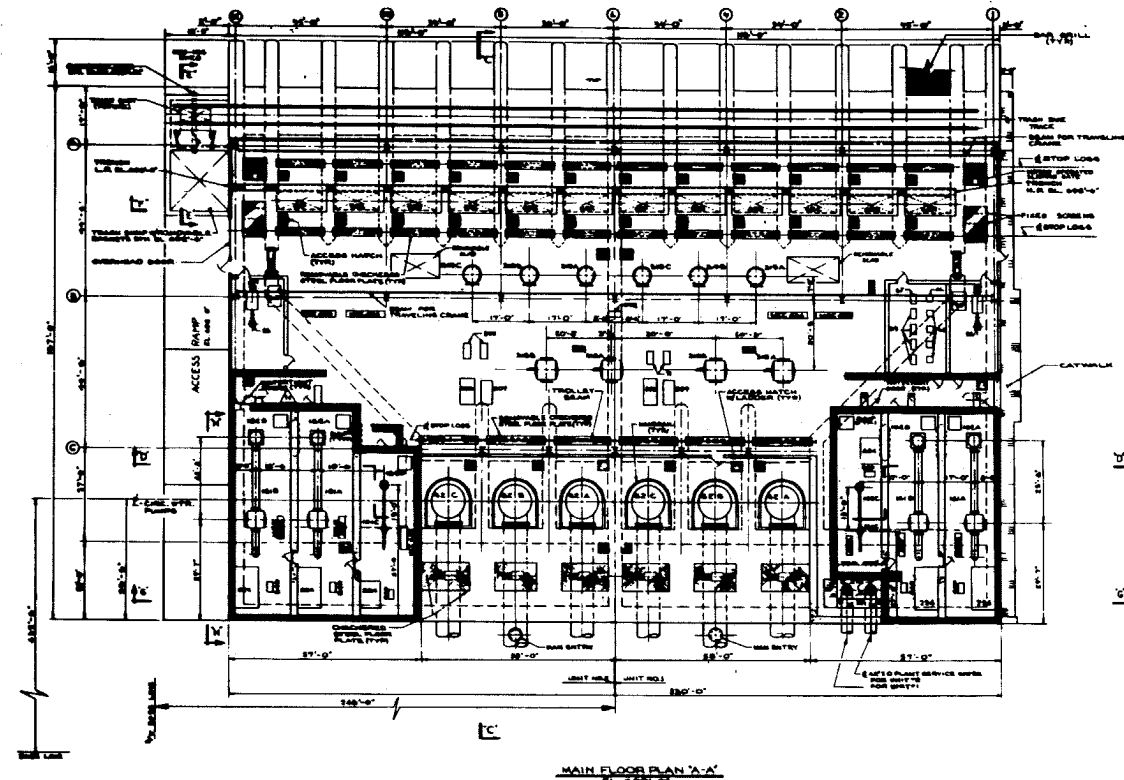
MISSILE PROOF WALLS
EL. 803'-3"

<p>CLINTON POWER STATION UPDATED SAFETY ANALYSIS REPORT</p>	
<p>FIGURE 3.5-3</p>	
<p>MISSILE PROOF WALLS</p>	
<p>(SHEET 4 OF 5)</p>	

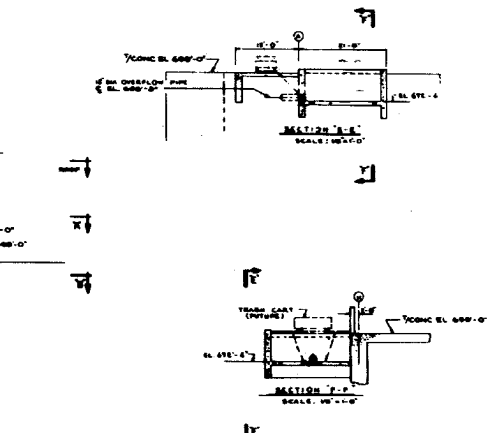
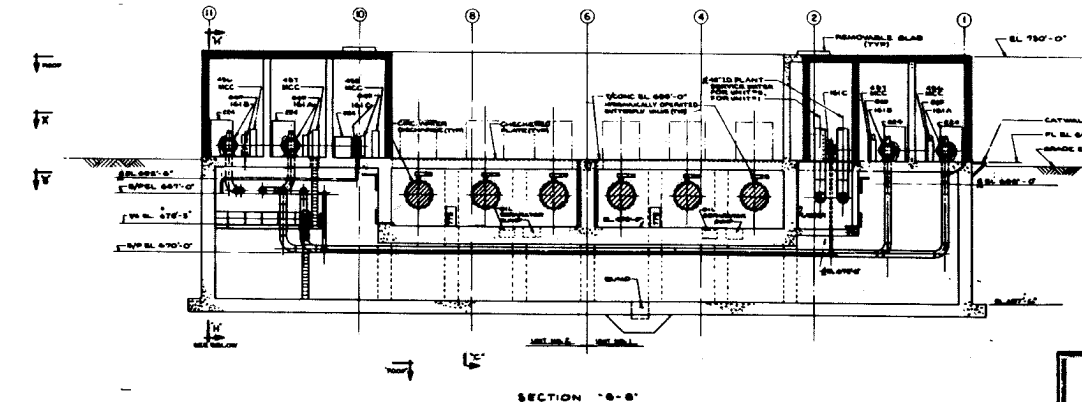
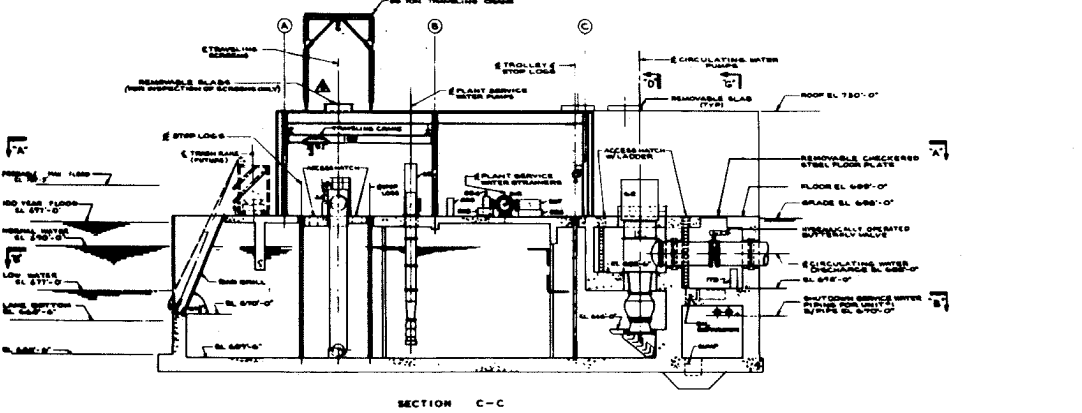
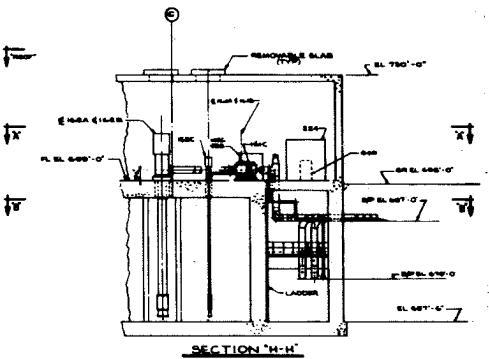
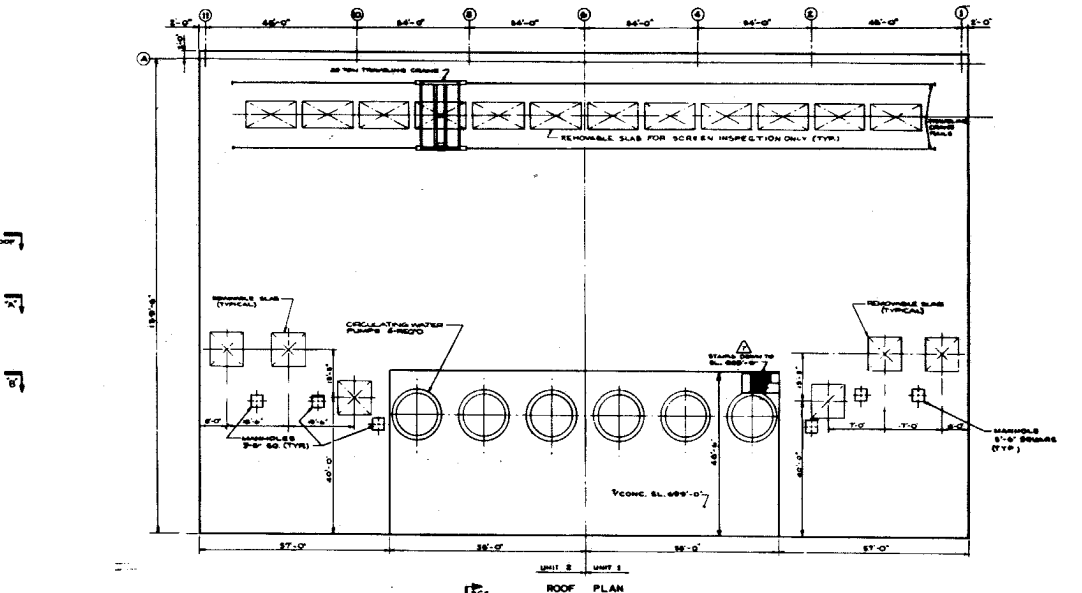
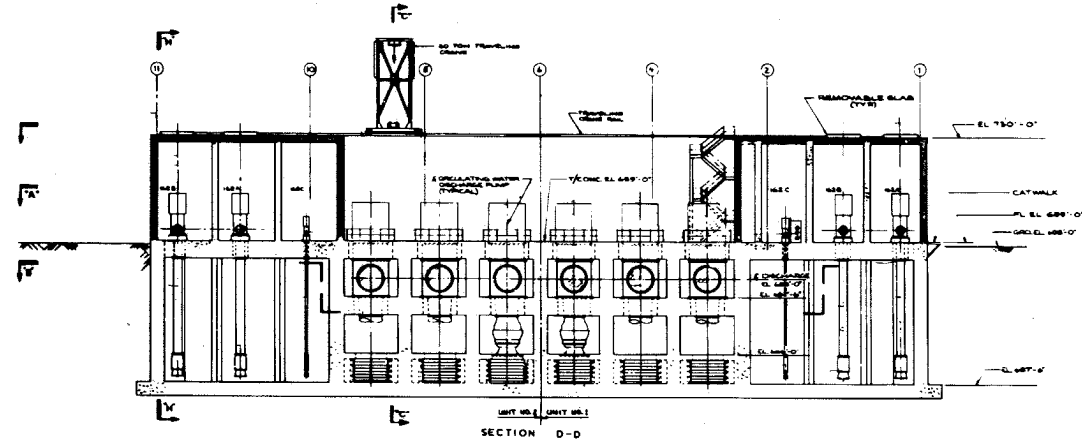


CLINTON POWER STATION
 UPDATED SAFETY ANALYSIS REPORT

FIGURE 3.5-3
 MISSILE PROOF WALLS
 (SHEET 5 OF 5)



ITEM	EQUIPMENT NAME
62	CIRC. WATER PUMPS
65	TRAVELING SCREEN
66	SERVICE WATER EVAPORATOR
67	SERVICE WATER CHLORINATOR
68	CIRC. WATER EVAPORATOR
69	CIRC. WATER CHLORINATOR
71	CIRC. WATER CHLOR BOOSTER PUMP
90	DIESEL FIRE PUMP DAY TANK
96	DIESEL DRIVEN FIRE PUMP
109	25TON TRAVELING CRANE
161	SHUTDOWN SVC WATER STRAINERS
162	SHUTDOWN SVC WATER PUMPS
224	SEW PUMP ROOM COOLING UNIT
316	PLANT SVC WATER STRAINERS
318	PLANT SVC WATER PUMPS
410/463	MOTOR CONTROL CENTER
836	INSTRUMENT PANEL
637	FIRE PUMP CONTROL PANEL
205	PSW SEAL WTR. PUMP
204	HYDRAULIC ACCUMULATOR
207	HYDRAULIC RESERVOIR

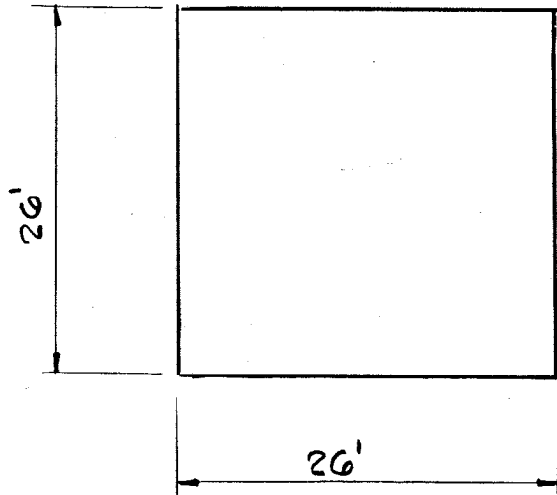


MISSILE PROOF WALLS
CIRCULATING WATER SCREEN HOUSE

CLINTON POWER STATION
UPDATED SAFETY ANALYSIS REPORT

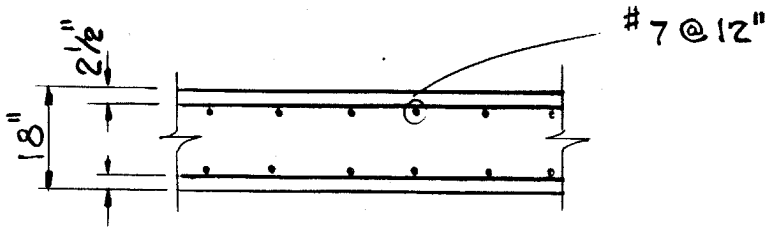
FIGURE 3.5-4

MISSILE PROOF WALLS
CIRCULATING WATER SCREEN HOUSE



$f'_c = 3500 \text{ PSI}$

$f_y = 60 \text{ KSI}$



MISSILE-RESISTANT CONCRETE PANEL

CLINTON POWER STATION
 UPDATED SAFETY ANALYSIS REPORT

Figure 3.5-6
 (Q & R 220.07)

MISSILE-RESISTANT CONCRETE PANEL