

CHART B

VALVE NO	A	B	C	D	E	F
310	ZC-310-IS	ZC-310-2S	SOV-310			
FCV-110B	ZC-FCV-110B-IS	ZC-FCV-110B-2S	SOV-110B			
FCV-111B	ZC-FCV-111B-IS	ZC-FCV-111B-2S	SOV-111B			
LCV-112A	ZC-LCV-112A-IS	ZC-LCV-112A-2S	SOV-112A			
LCV-112B	ZC-LCV-112B-IS	ZC-LCV-112B-2S	SOV-112B			
PCV-113B	ZC-PCV-113B-IS	ZC-PCV-113B-2S	SOV-113B			
TCV-149	ZC-TCV-149-IS	ZC-TCV-149-2S	SOV-149			

REFERENCE DRAWINGS:

- FP9321-2293 - RCS - REACTOR COOLANT SYSTEM
- 9321-F-2720 - ACS - AUXILIARY COOLANT SYSTEM
- 9321-F-2745 - SS - SAMPLING SYSTEM
- 9321-F-2725 - GA - GAS ANALYZER SYSTEM
- 9321-F-2502 - SIS - SAFETY INJECTION SYSTEM
- 9321-F-2719 - WDS - WASTE DISPOSAL SYSTEM (SHT. 1)
- 9321-F-2730 - WDS - WASTE DISPOSAL SYSTEM (SHT. 2)
- 208158 - CVCS - CHEMICAL & VOLUME CONTROL SYSTEM (SHT. 2)
- 235309 - CVCS - CHEMICAL & VOLUME CONTROL SYSTEM (SHT. 4)
- 9321-F-2737 - CVCS - CHEMICAL & VOLUME CONTROL SYSTEM (SHT. 1)
- 9321-F-2724 - PW - PRIMARY MAKE-UP WATER
- 9321-F-2728 - (DH) - NUCLEAR EQUIPMENT DRAINS
- 9321-C-2016 - FLOW DIAGRAM SYMBOLS
- 9321-F-2746 - IVSWS - ISOLATION VALVE SEAL WATER SYSTEM

- NOTES:**
- VALVES FAILS WITH FLOW TO VOLUME CONTROL TANK.
 - SPECIAL VALVE - FUNCTIONS AS BOTH ISOLATION RELIEF VALVE.
 - SPECIAL SPRING LOADED CHECK VALVE.
 - ELECTROMAGNETIC - LOCATE METER IN VERTICAL PIPE RUN.
 - 1/8" HOLE OR 0.18" WIDE X 0.09" DEEP GROOVE IN DISC
 - ADDITIONAL VENTS & DRAINS MAY BE REQUIRED BY THE PIPE LAYOUT.
 - GLOBE VALVES ARE NORMALLY INSTALLED WITH FLOW UNDER THE SEAT. EXCEPTIONS ARE VALVES NO. 230, 232, 233, 235, 236, 238, 240A, 250A, 250B, 250C & 250D.
 - J. STEAM TRAP AND STRAINER SUPPLIED BY UE & C.
 - ITEM NO'S IN PARENTHESIS ARE PRECEDED BY IPP. L. DRAIN, CHARGING PUMPS LEAKAGE COLLECTIVE SYSTEM.
 - M. *** INDICATES CONTROL VALVE HAS ADDITIONAL ASSOCIATED CONTROL EQUIPMENT IS REPRESENTED ON CONTROL VALVE HOOD-UP DETAIL DWG. 9321-F-7096.
 - N. THE QUALITY GROUP A, B, C AND SEISMIC BOUNDARIES EXTEND TO THE FIRST SEISMIC SUPPORT/RESTRAINT BEYOND THE BOUNDARIES SHOWN.
- INSERVICE INSPECTION NOTES:**
- 1CP-CONTAINMENT PENETRATIONS, ASME CLASS MC APPLIES.
 - 2FOR NON-CODE PIPING PENETRATING CONTAINMENT & NDT CLASSIFIED QUALITY GROUP "A", "B" OR "C" QUALITY GROUP "MC" DESIGNATION SHALL BE APPLIED.

CHART A

FI/FE/FXE	A	B	C	D	E	F	G	H	O
116	239C	240C	5026	5027	5028	5029	5030	5031	
115	239D	240D	5032	5033	5034	5035	5036	5037	
143	239B	240B	5038	5039	5040	5041	5042	5043	
144	239A	240A	5044	5045	5046	5047	5048	5049	
168	4916	4917				5070	5070	5070	
158	4918	4917				5071	5071	5071	
145B	4914	4913				5072	5072	5072	
144B	4912	4911				5080	5079	5078	

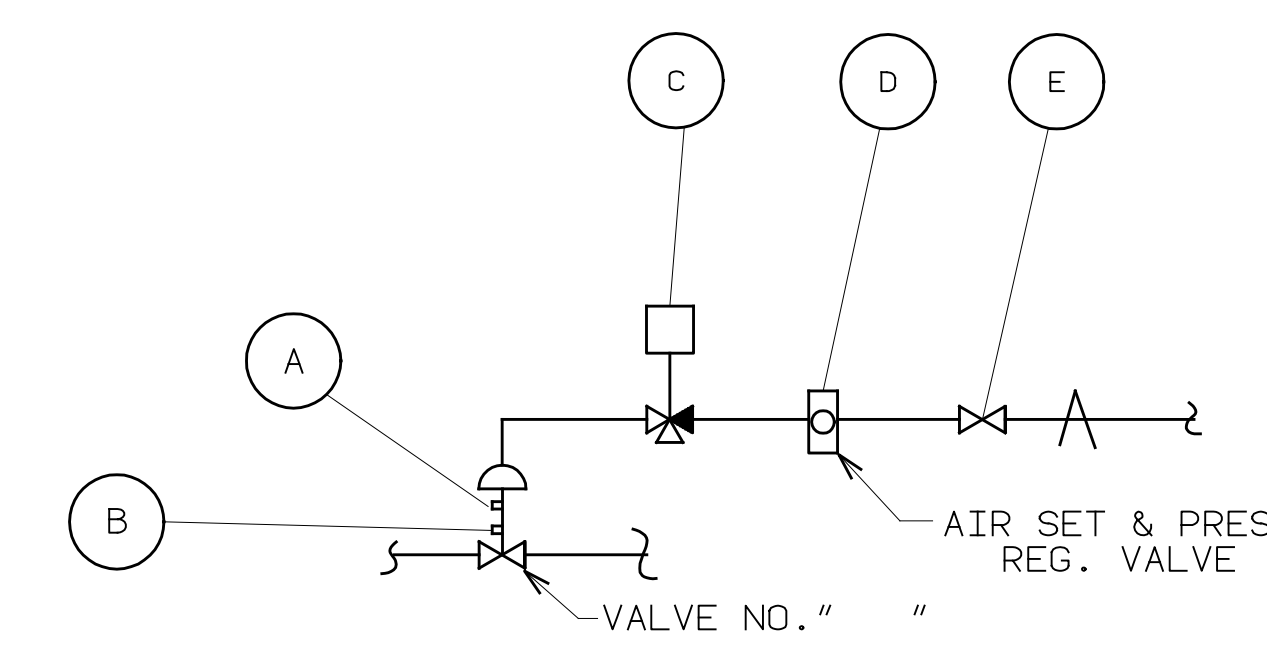
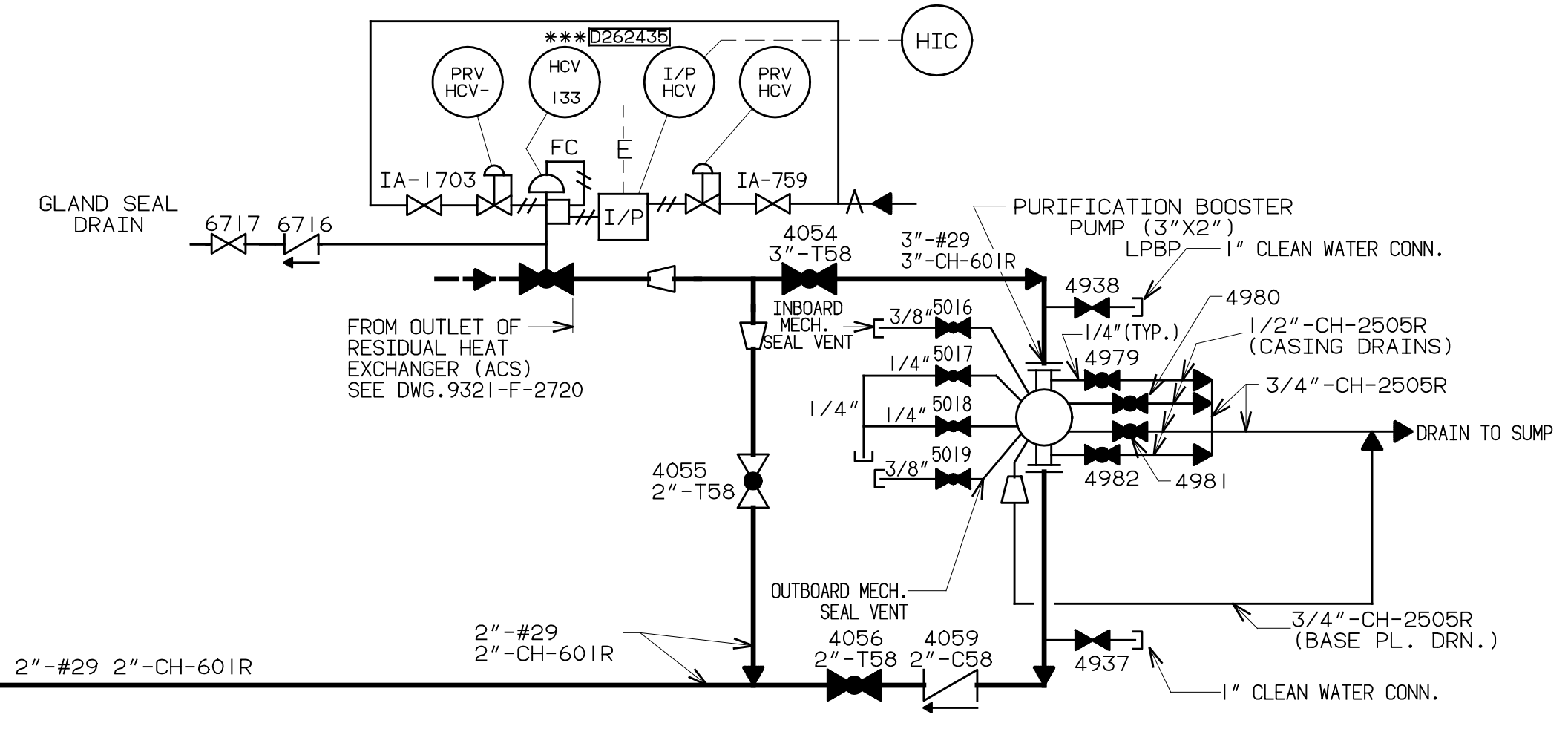
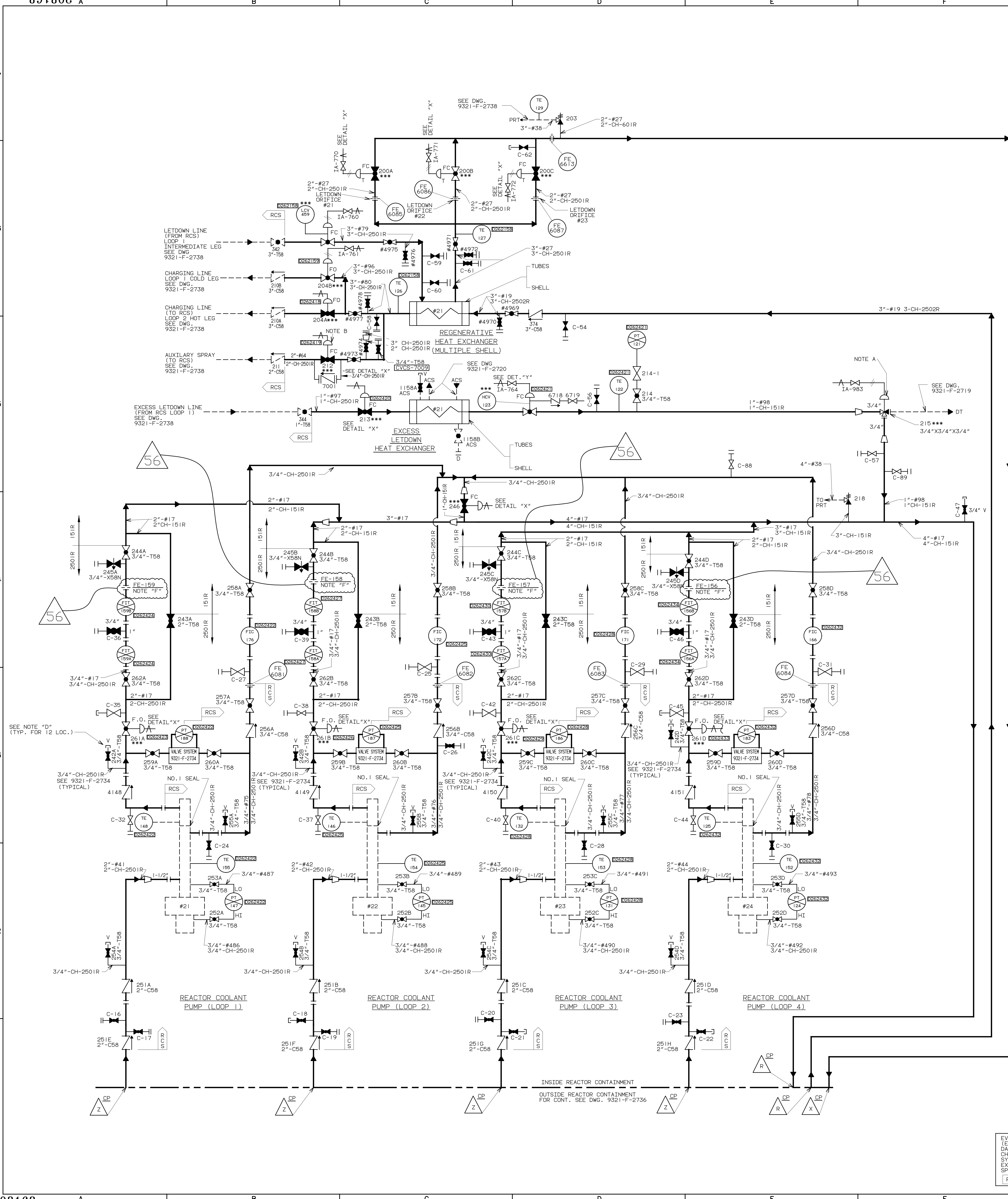
APPROVALS

DATE	BY	CHKD	APP.	DATE	BY	CHKD	APP.
06/13/16	130	INCORPORATED	EC-50139				

TITLE: FLOW DIAGRAM
CHEMICAL & VOLUME CONTROL SYSTEM -
LFSAR FIGURE NO. 9.2-1 (SHT. 1)

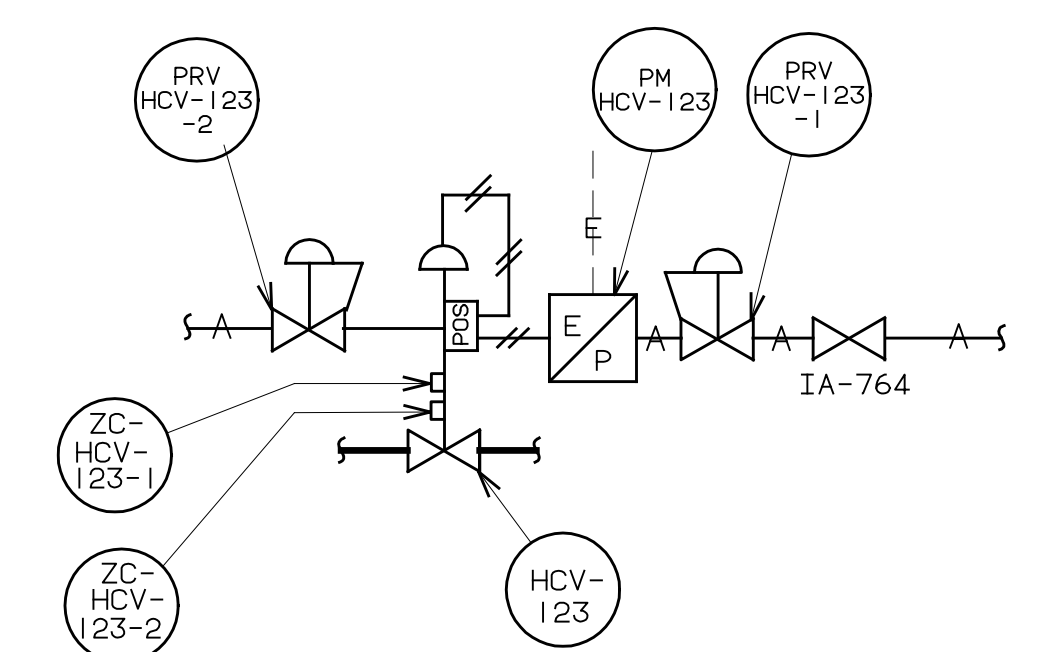
STATION: INDIAN POINT

DWG. NO.: 9321-F-2736-130



VALVE NO	A	B	C	D	E
246	ZC-246-1	ZC-246-2	SOV-246	PRV-246	IA-773
261A	ZC-261A-1S	ZC-261A-2S	SOV-261A	PRV-261A	IA-766
261B	ZC-261B-1S	ZC-261B-2S	SOV-261B	PRV-261B	IA-767
261C	ZC-261C-1S	ZC-261C-2S	SOV-261C	PRV-261C	IA-768
261D	ZC-261D-1S	ZC-261D-2S	SOV-261D	PRV-261D	IA-769
212	ZC-212-1S	ZC-212-2S	SOV-212	PRV-212	IA-1312
213	ZC-213-1S	ZC-213-2S	SOV-213	PRV-213	IA-765
200A	ZC-200A-1	ZC-200A-2	SOV-200A	PRV-200A	IA-770
200B	ZC-200B-1	ZC-200B-2	SOV-200B	PRV-200B	IA-771
200C	ZC-200C-1	ZC-200C-2	SOV-200C	PRV-200C	IA-772
215	ZC-215-1	ZC-215-2	SOV-215	PRV-215	IA-983
204A	ZC-204A-1	ZC-204A-2	SOV-204A	PRV-204A	IA-762
204B	ZC-204B-1	ZC-204B-2	SOV-204B	PRV-204B	IA-761
LCV-459	ZC-LCV-459-1	ZC-LCV-459-2	SOV-459	PRV-LCV-459	IA-760

DETAIL "X"



DETAIL "Y"

- NOTES**
- A. VALVE FAILS WITH FLOW TO VOLUME CONTROL TANK & RELIEF VALVE
 - B. SPECIAL VALVE FUNCTIONS AS BOTH ISOLATION & RELIEF VALVE
 - C. *** INDICATES CONTROL VALVE HAS ADDITIONAL ASSOCIATED CONTROL EQUIPMENT & IS REPRESENTED ON CONTROL VALVE HOOK-UP DETAIL DRAWING 9321-F-7056.
 - D. FOR CONTINUATION SEE DWG. 9321-F-2734 (TYP. FOR 12 LOC.)
 - E. THE QUALITY GROUP A, B, C AND SEISMIC BOUNDARIES EXTEND TO THE FIRST SEISMIC SUPPORT/RESTRAINT BEYOND THE BOUNDARIES SHOWN.
 - F. FE-156, FE-157, FE-158, AND FE-159 ARE FLOW RESTRICTION ORIFICES INSTALLED PER EC 56002.

- INSERVICE INSPECTION NOTES:**
- 1. CP=CONTAINMENT PENETRATIONS, ASME CLASS MC APPLIES.
 - 2. FOR NON-CODE PIPING PENETRATING CONTAINMENT & NOT CLASSIFIED QUALITY GROUP "A", "B" OR "C" QUALITY GROUP "MC" DESIGNATION SHALL BE APPLIED.

WORK THIS DRAWING WITH
DWG. 9321-F-2734
AND DWG. 9321-F-2736

EVERYTHING ON THIS DRAWING (EXCLUDING THOSE PORTIONS WITH DASHED LINES) IS PART OF THE CHEMICAL AND VOLUME CONTROL SYSTEM (CVCS) LISTED IN EXHIBIT A, CI-240-1 EXCEPT AS SPECIFICALLY INDICATED HEREIN

RCS REACTOR COOLANT SYSTEM

- REF. DWG:**
- 9321-C-2016 FLOW DIAGRAM SYMBOLS
 - 9321-F-2538 CONTAINMENT BLDG PRIMARY COOLANT PRESSURIZER PIPING PLAN (SOUTH HALF)
 - 9321-F-2734 PIPING AT REACTOR COOLANT PUMPS

DWG. NO. **A208168-56**

DWG. SIZE **A** DWG. TYPE COMPANY **STATION**

Entergy INDIAN POINT

BORO: WESTCHESTER

TITLE: FLOW DIAGRAM
CHEMICAL & VOLUME CONTROL SYSTEM
UPSAR FIGURE No. 9.2-1 (SHT. 2)

APPROVALS

ENGINEERING

DESIGN

DESIGN MANAGER: W.J. KING 11-6-87

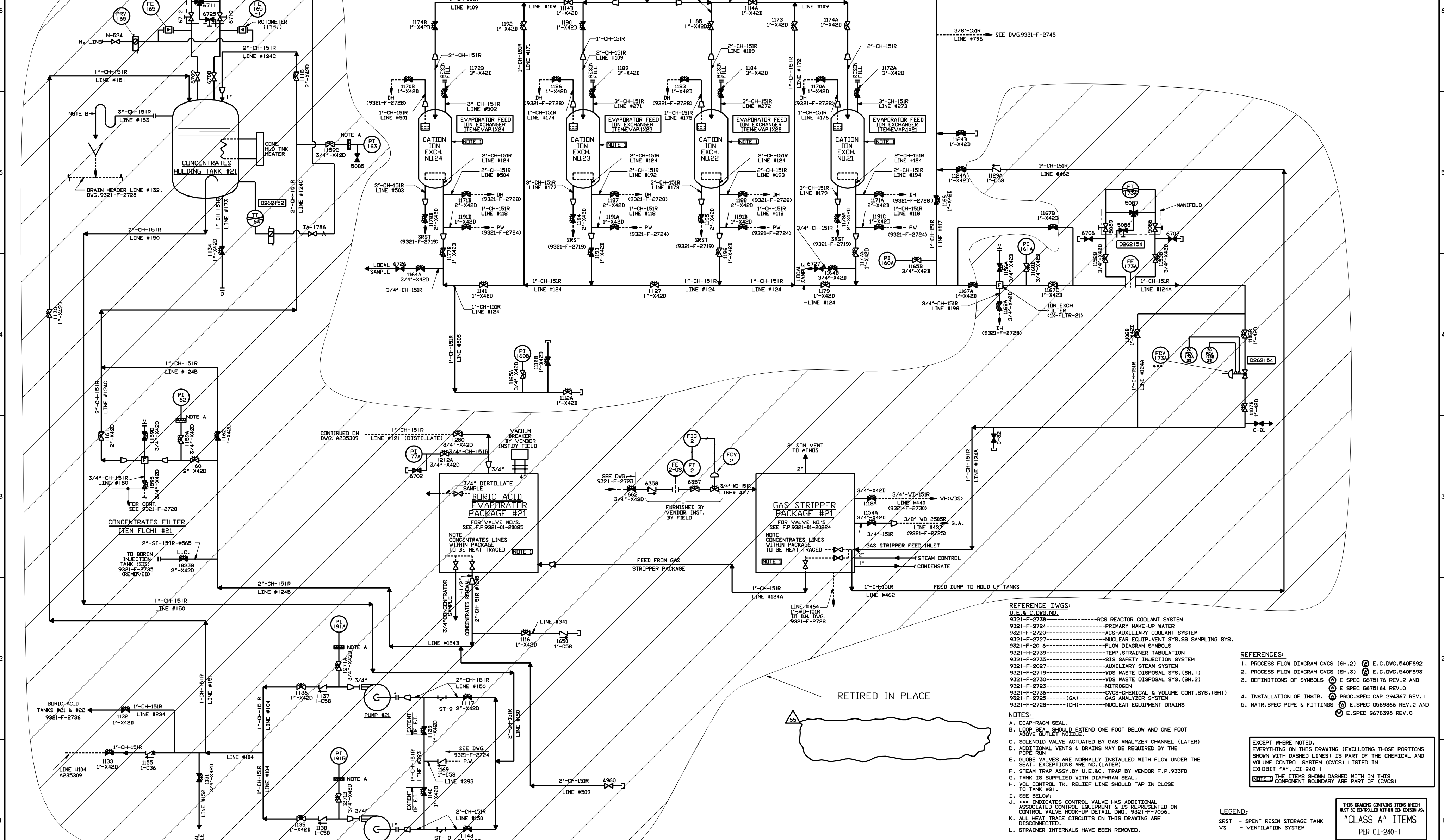
DESIGN SUPERVISOR: F.A. 8-17-90

DRAWN BY: MARZULLO 8-17-90

DESIGN CHECKER: L.H. 8-17-90

SCALE: NONE DISCIPLINE CODE: MY

9321-F-2737



- REFERENCE DWGS:**
 U.E. & C. DWG. NO.
 9321-F-2738-----RCS REACTOR COOLANT SYSTEM
 9321-F-2724-----PRIMARY MAKE-UP WATER
 9321-F-2720-----ACS-AUXILIARY COOLANT SYSTEM
 9321-F-2727-----NUCLEAR EQUIP. VENT. SYS. SS SAMPLING SYS.
 9321-F-2016-----FLOW DIAGRAM SYMBOLS
 9321-H-2739-----TEMP. STRAINER TABULATION
 9321-F-2735-----SIS SAFETY INJECTION SYSTEM
 9321-F-2027-----AUXILIARY STEAM SYSTEM
 9321-F-2719-----WDS WASTE DISPOSAL SYS. (SH. 1)
 9321-F-2730-----WDS WASTE DISPOSAL SYS. (SH. 2)
 9321-F-2723-----NITROGEN
 9321-F-2736-----CVCS-CHEMICAL & VOLUME CONT. SYS. (SH. 1)
 9321-F-2726-----GAS ANALYZER SYSTEM
 9321-F-2728-----NUCLEAR EQUIPMENT DRAINS
- REFERENCES:**
 1. PROCESS FLOW DIAGRAM CVCS (SH. 2) E.C. DWG. 540F892
 2. PROCESS FLOW DIAGRAM CVCS (SH. 3) E.C. DWG. 540F893
 3. DEFINITIONS OF SYMBOLS E SPEC G675176 REV. 2 AND E SPEC G675164 REV. 0
 4. INSTALLATION OF INSTR. PROC. SPEC CAP 294367 REV. 1
 5. MATR. SPEC PIPE & FITTINGS E. SPEC C569866 REV. 2 AND E. SPEC G676398 REV. 0

- NOTES:**
 A. DIAPHRAGM SEAL.
 B. LOOP SEAL SHOULD EXTEND ONE FOOT BELOW AND ONE FOOT ABOVE OUTLET NOZZLE.
 C. SOLENOID VALVE ACTUATED BY GAS ANALYZER CHANNEL (LATER)
 D. ADDITIONAL VENTS & DRAINS MAY BE REQUIRED BY THE PIPE RUN
 E. GLOBE VALVES ARE NORMALLY INSTALLED WITH FLOW UNDER THE SEAT. EXCEPTIONS ARE N.C. (LATER)
 F. FLOW TRAP ASSY. BY U.E. & C. TRAP BY VENDOR F.P. 933FD
 G. TANK IS SUPPLIED WITH DIAPHRAGM SEAL.
 H. VOL. CONTROL TK. RELIEF LINE SHOULD TAP IN CLOSE TO TANK #21.
 I. SEE BELOW.
 J. *** INDICATES CONTROL VALVE HAS ADDITIONAL ASSOCIATED CONTROL EQUIPMENT & IS REPRESENTED ON CONTROL VALVE HOOK-UP DETAIL DWG. 9321-F-7056.
 K. ALL HEAT TRACE CIRCUITS ON THIS DRAWING ARE DISCONNECTED.
 L. STRAINER INTERNALS HAVE BEEN REMOVED.

EXCEPT WHERE NOTED, EVERYTHING ON THIS DRAWING (EXCLUDING THOSE PORTIONS SHOWN WITH DASHED LINES) IS PART OF THE CHEMICAL AND VOLUME CONTROL SYSTEM (CVCS) LISTED IN EXHIBIT "A", CI-240-1

THE ITEMS SHOWN DASHED WITH IN THIS COMPONENT BOUNDARY ARE PART OF (CVCS)

LEGEND:
 SRST - SPENT RESIN STORAGE TANK
 VS - VENTILATION SYSTEM

THIS DRAWING CONTAINS ITEMS WHICH MUST BE CONTROLLED WITHIN CDN EDISON AS "CLASS A" ITEMS PER CI-240-1

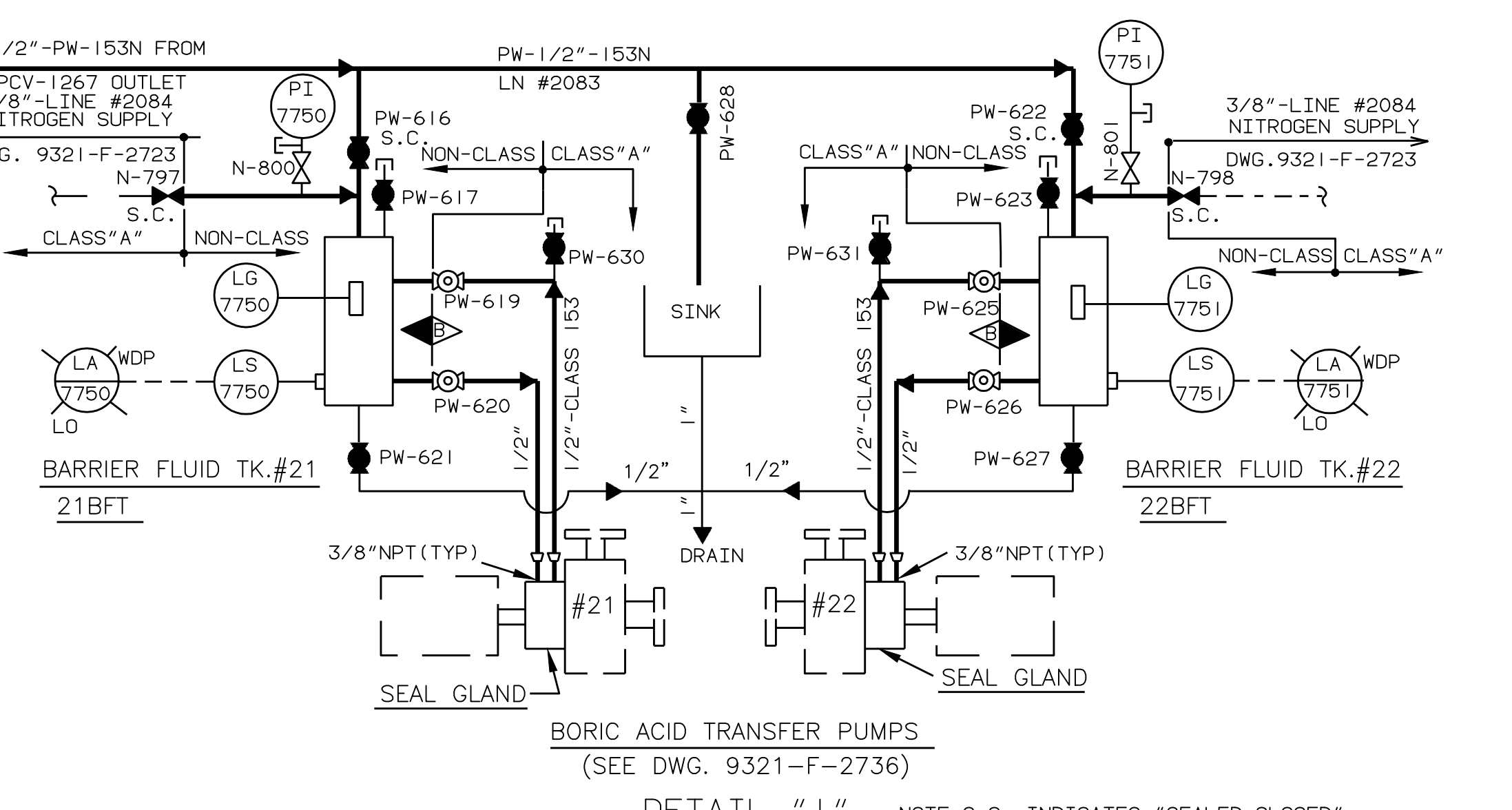
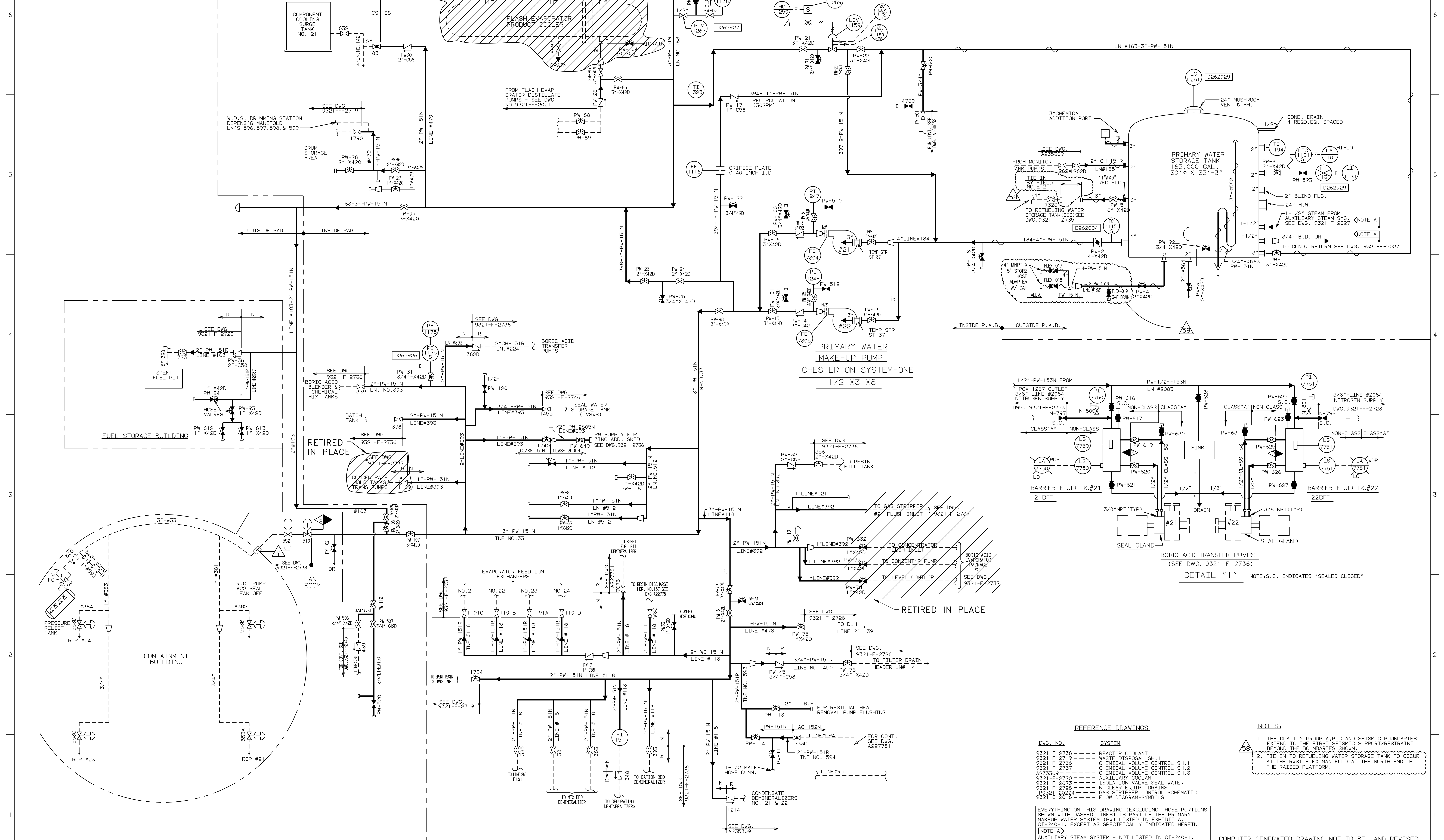
COMPUTER GENERATED DRAWING NOT TO BE HAND REVISED WORK THIS DRAWING WITH DWG. A235309

55 INCORPORATED EC0000003112	11/07/07 CLG	APPROVAL	DATE	DESIGN	DATE	SCALE	REV'D	DWG. NO.
								9321-F-2737-55

THIS REVISION IS NON-CLASS PER CI-240-1 UPDATED DWG. TO SHOW RETIRED BORON RECOVERY EQUIPMENT PER CBS #199806527. RELEASE AS CONSTRUCTED.
 G. BULLA 06/09/01 P/N 69901-AF D.B./Y.J. 2/09/01

DATE REVIEW APPROVALS

TITLE: FLDW DIAGRAM
 CHEMICAL & VOLUME CONTROL SYSTEM - SH. No. 2
 UFSAR FIGURE No. 9.2-1 (SHT. 3)
 SCALE NONE
 STATION INDIAN POINT
 Con Edison
 DWG. NO. 9321-F-2737-55



REFERENCE DRAWINGS.

DWG. NO.	SYSTEM
9321-F-2738	REACTOR COOLANT
9321-F-2719	WASTE DISPOSAL SH.1
9321-F-2736	CHEMICAL VOLUME CONTROL SH.1
9321-F-2737	CHEMICAL VOLUME CONTROL SH.2
A235309	CHEMICAL VOLUME CONTROL SH.3
9321-F-2720	AUXILIARY COOLANT
9321-F-2673	ISOLATION VALVE SEAL WATER
9321-F-2728	NUCLEAR EQUIP. DRAINS
F9321-20624	GAS STRIPPER CONTROL SCHEMATIC
9321-C-2016	FLOW DIAGRAM-SYMBOLS

NOTES:

- THE QUALITY GROUP A, B, C AND SEISMIC BOUNDARIES EXTEND TO THE FIRST SEISMIC SUPPORT RESTRAINT BEYOND THE BOUNDARIES SHOWN.
- TIE-IN TO REFUELING WATER STORAGE TANK TO OCCUR AT THE FIRST FLEX MANIFOLD AT THE NORTH END OF THE RAISED PLATFORM.

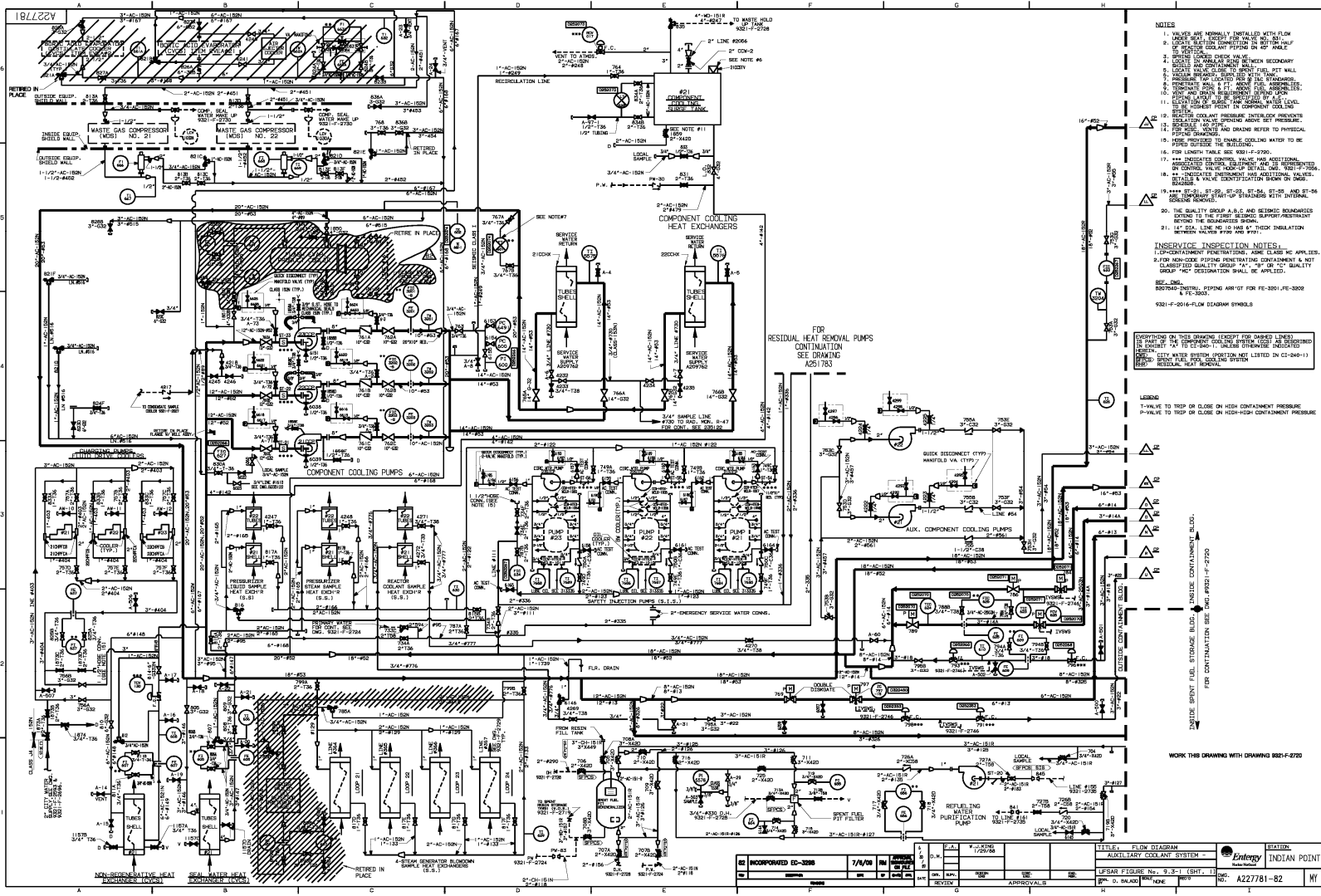
EVERYTHING ON THIS DRAWING (EXCLUDING THOSE PORTIONS SHOWN WITH DASHED LINES) IS PART OF THE PRIMARY MAKEUP WATER SYSTEM (PW) LISTED IN EXHIBIT A, CI-240-1, EXCEPT AS SPECIFICALLY INDICATED HEREIN.

NOTE A
AUXILIARY WATER SYSTEM - NOT LISTED IN CI-240-1.

COMPUTER GENERATED DRAWING NOT TO BE HAND REVISED

58	INCORPORATED EC-50147	03/31/16	SJB	APPROVAL SIGNATURES ON FILE	DATE	CHK.	REV.	SESSION	DATE	SCALE	REC'D	BY	NO.	BY
													9321-F-2724-58	MY

PRIMARY AUXILIARY BUILDING



- NOTES**
1. VALVES ARE NORMALLY INSTALLED WITH FLOW TO THE RIGHT.
 2. LOCAL ISOLATION COMPENSATION IN BOTTOM HALF OF STORAGE TANKS OR PIPELINE OR AT JUNCTION.
 3. SPICER LOWERS CHECK VALVE.
 4. LOCAL ISOLATION COMPENSATION IN BOTTOM HALF OF STORAGE TANKS OR PIPELINE OR AT JUNCTION.
 5. LOCAL ISOLATION COMPENSATION IN BOTTOM HALF OF STORAGE TANKS OR PIPELINE OR AT JUNCTION.
 6. LOCAL ISOLATION COMPENSATION IN BOTTOM HALF OF STORAGE TANKS OR PIPELINE OR AT JUNCTION.
 7. LOCAL ISOLATION COMPENSATION IN BOTTOM HALF OF STORAGE TANKS OR PIPELINE OR AT JUNCTION.
 8. LOCAL ISOLATION COMPENSATION IN BOTTOM HALF OF STORAGE TANKS OR PIPELINE OR AT JUNCTION.
 9. LOCAL ISOLATION COMPENSATION IN BOTTOM HALF OF STORAGE TANKS OR PIPELINE OR AT JUNCTION.
 10. LOCAL ISOLATION COMPENSATION IN BOTTOM HALF OF STORAGE TANKS OR PIPELINE OR AT JUNCTION.
 11. LOCAL ISOLATION COMPENSATION IN BOTTOM HALF OF STORAGE TANKS OR PIPELINE OR AT JUNCTION.
 12. LOCAL ISOLATION COMPENSATION IN BOTTOM HALF OF STORAGE TANKS OR PIPELINE OR AT JUNCTION.
 13. LOCAL ISOLATION COMPENSATION IN BOTTOM HALF OF STORAGE TANKS OR PIPELINE OR AT JUNCTION.
 14. LOCAL ISOLATION COMPENSATION IN BOTTOM HALF OF STORAGE TANKS OR PIPELINE OR AT JUNCTION.
 15. LOCAL ISOLATION COMPENSATION IN BOTTOM HALF OF STORAGE TANKS OR PIPELINE OR AT JUNCTION.
 16. FOR LENGTH TABLE SEE 9321-F-2790.
 17. ALL INSTALLED VALVES SHALL BE INSPECTED AND TESTED TO THE DESIGN SPECIFICATION.
 18. ALL INSTALLED VALVES SHALL BE IDENTIFIED BY TAGS.
 19. ALL INSTALLED VALVES SHALL BE IDENTIFIED BY TAGS.
 20. THE QUALITY GROUP A.C. AND B.C. DESIGN STANDARDS APPLY TO THE FIRST DESIGN SUBMITTAL AND TO ALL SUBSEQUENT DESIGN SUBMITTALS UNLESS OTHERWISE SPECIFIED.
 21. ALL INSTALLED VALVES SHALL BE IDENTIFIED BY TAGS.
- INSERVICE INSPECTION NOTES:**
1. CONTAINMENT PENETRATIONS: ADM CLASS 'C' AND 'D'.
 2. FOR MINOR PIPE PENETRATIONS CONTAINMENT A NOT CLASSIFIED QUALITY GROUP 'A'.
 3. FOR MAJOR PIPE PENETRATIONS CONTAINMENT A NOT CLASSIFIED QUALITY GROUP 'A'.
 4. FOR MAJOR PIPE PENETRATIONS CONTAINMENT A NOT CLASSIFIED QUALITY GROUP 'A'.
- REF. DES.**
 9321-F-2016-FLOW DIAGRAM SYMBOLS

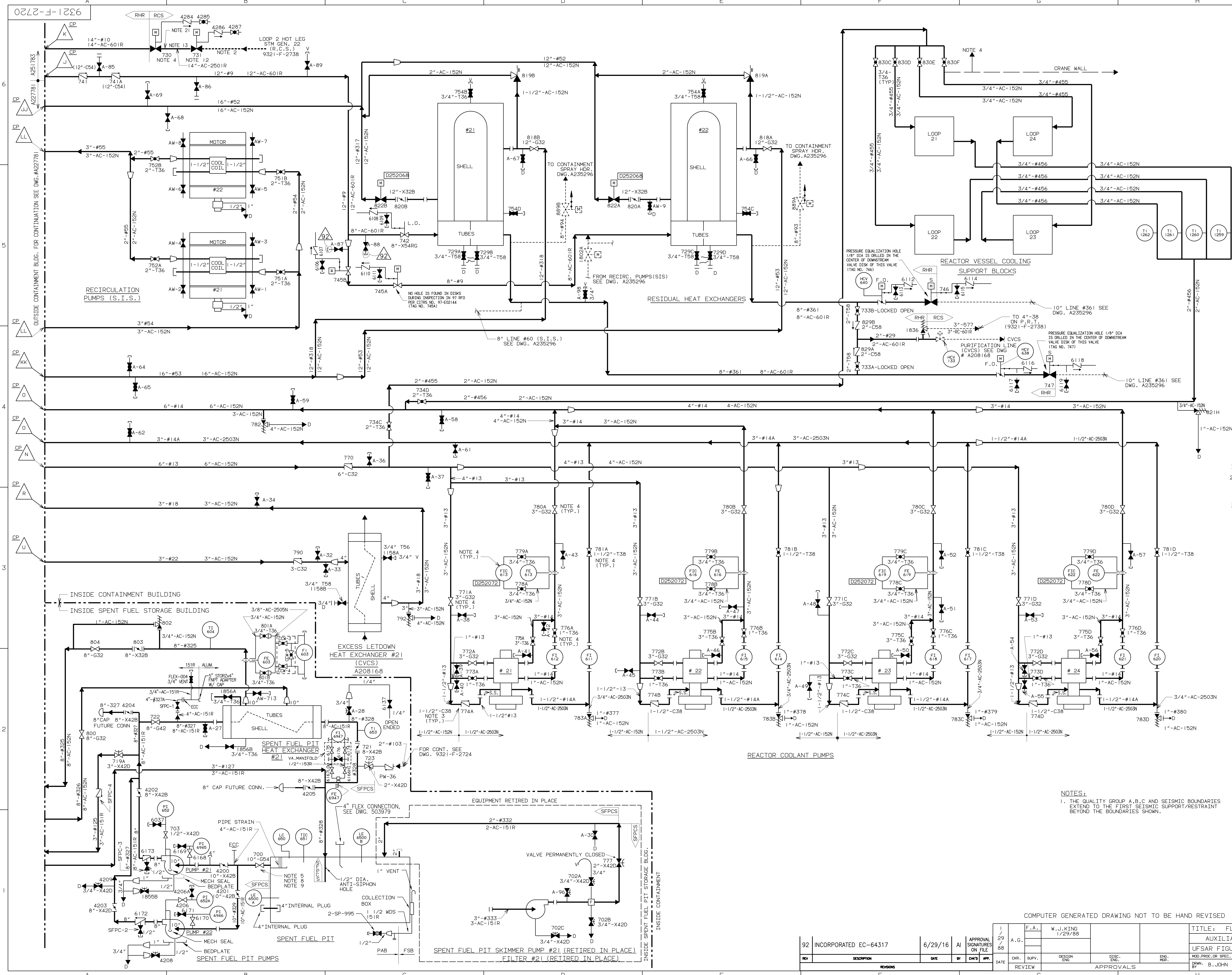
LEGEND

V-VALVE TO TRIP OR CLOSE ON HIGH CONTAINMENT PRESSURE
 P-VALVE TO TRIP OR CLOSE ON HIGH-HIGH CONTAINMENT PRESSURE

INSIDE BENT FUEL STORAGE BLDG. - INSIDE CONTAINMENT BLDG.
 FOR CONTINUATION SEE 9321-F-2790

WORK THIS DRAWING WITH DRAWING 9321-F-2790

INCORPORATED ED-3288 7/9/98 APPROVALS [Signature]	TITLE: FLOW DIAGRAM AUXILIARY COOLANT SYSTEM LEFAR FIGURE No. 9.3-3 (SST-1) D. SANDERSON APPROVALS [Signature]	REGION: INDIAN POINT QC: A22781-82 NY
--	---	--



- REFERENCES**
1. PROCESS FLOW DIAGRAM SHEET #1 (D) DWG. 540F889
 2. DEFINITION OF SYMBOLS
 3. INSTALLATION OF INSTRUMENTATION
 4. MATERIAL SPEC. PIPE AND FITTINGS
- INSERVICE INSPECTION NOTES:**
1. CP-CONTAINMENT PENETRATIONS, ASME CLASS MC APPLIES.
 2. FOR NON-CODE PIPING PENETRATING CONTAINMENT & NOT CLASSIFIED QUALITY GROUP "A", "B" OR "C" QUALITY GROUP "MC" DESIGNATION SHALL BE APPLIED.
- REFERENCE DRAWINGS**
- 9321-F-2719 ----- WDS- WASTE DISPOSAL SYSTEM SHT #1
 - 9321-F-2730 ----- WDS- WASTE DISPOSAL SYSTEM SHT #2
 - 9321-F-2724 ----- PW- PRIMARY MAKE-UP WATER SYSTEM
 - 9321-F-2720 ----- AUX. STM. SUPPLY & COND. RETURN SYSTEM
 - 9321-F-2735 ----- SIS- SAFETY INJECTION SYSTEM
 - 9321-F-2736 ----- CVCS- CHEM. & VOLUME CONTROL SYS. SHT #1
 - 9321-F-2737 ----- CVCS- CHEM. & VOLUME CONTROL SYS. SHT #2
 - 9321-F-2738 ----- RCS- REACTOR COOLANT SYSTEM
 - 9321-F-2745 ----- SS- SAMPLING SYSTEM
 - 9321-F-2746 ----- IWVS- ISOLATION VALVE SEAL WATER SYS.
 - 9321-F-2734 ----- PIPING AT REACTOR COOLANT PUMPS
 - 9321-C-2016 ----- FLOW DIAGRAM SYMBOLS
 - 9321-783 ----- AUXILIARY COOLANT SYSTEM RESIDUAL HEAT REMOVAL PUMPS

EVERYTHING ON THIS DRAWING (EXCEPT FOR DASHED LINES) IS PART OF THE COMPONENT COOLING SYSTEM AS DESCRIBED IN EXHIBIT A TO C1-240-1 UNLESS OTHERWISE INDICATED

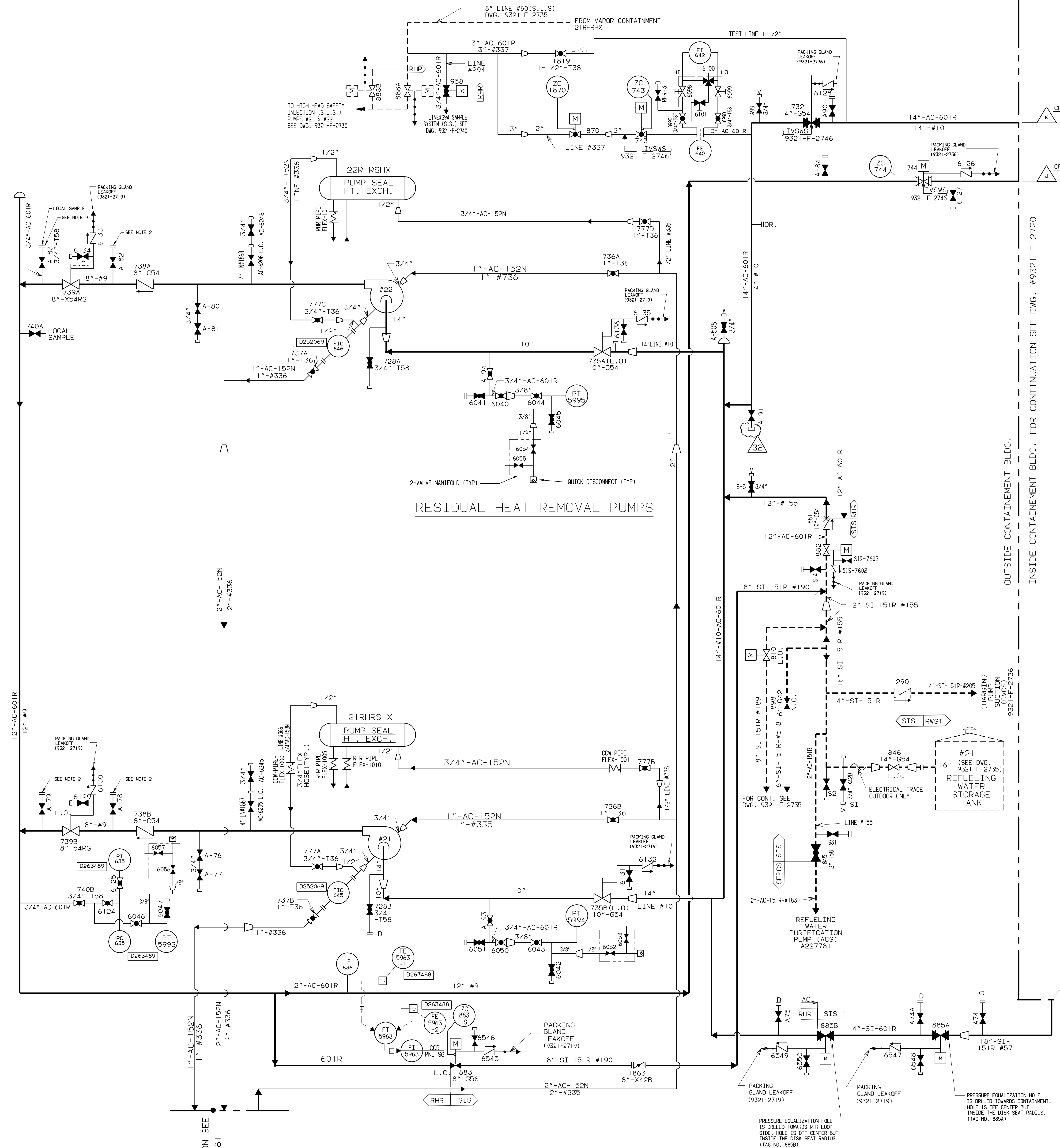
[SPPCS] > SPENT FUEL POOL COOLING SYSTEM
 [RHR] > RESIDUAL HEAT REMOVAL SYSTEM
 [RCS] > REACTOR COOLANT SYSTEM

NOTES:

1. THE QUALITY GROUP A,B,C AND SEISMIC BOUNDARIES EXTEND TO THE FIRST SEISMIC SUPPORT/RESTRAINT BEYOND THE BOUNDARIES SHOWN.

WORK THIS DWG. WITH DWG. A-22778.1 FOR NOTES SEE DRAWING #A-22778.1

COMPUTER GENERATED DRAWING NOT TO BE HAND REVISED				STATION	
92	INCORPORATED EC-64317	6/29/16	AI	INDIAN POINT	
REV	DESCRIPTION	DATE	BY	APPROVALS	SCALE
					NONE
TITLE: FLOW DIAGRAM AUXILIARY COOLANT SYSTEM - UFSAR FIGURE No. 9.3-1 (SHT. 2)				Entergy Nuclear Services	
MOD. PROC. OR SPEC. DOWN BY B. JOHN				DWG. NO. 9321-F-2720-92	



RESIDUAL HEAT REMOVAL PUMPS

INSIDE CONTAINMENT BLDG. FOR CONTINUATION SEE DWG. #9321-F-2720

OUTSIDE CONTAINMENT BLDG.

- NOTES:
1. THE QUALITY GROUP A,B,C AND SEISMIC BOUNDARIES EXTEND TO THE FIRST SEISMIC SUPPORT/RESTRAINT BEYOND THE BOUNDARIES SHOWN.
 2. FLANGES HAVE A 1500W RATING (ONLY WHERE NOTED).
- INSERVICE INSPECTION NOTES:
1. CP=CONTAINMENT PENETRATIONS, ASME CLASS MC APPLIES.
 2. FOR NON-CODE PIPING PENETRATING CONTAINMENT & NOT CLASSIFIED QUALITY GROUP "A", "B" OR "C" QUALITY GROUP "MC" DESIGNATION SHALL BE APPLIED.

FOR NOTES AND REF. DWGS. SEE DWG. A227781

THIS DWG. TO BE REVISED ONLY IN AUTOCAD.

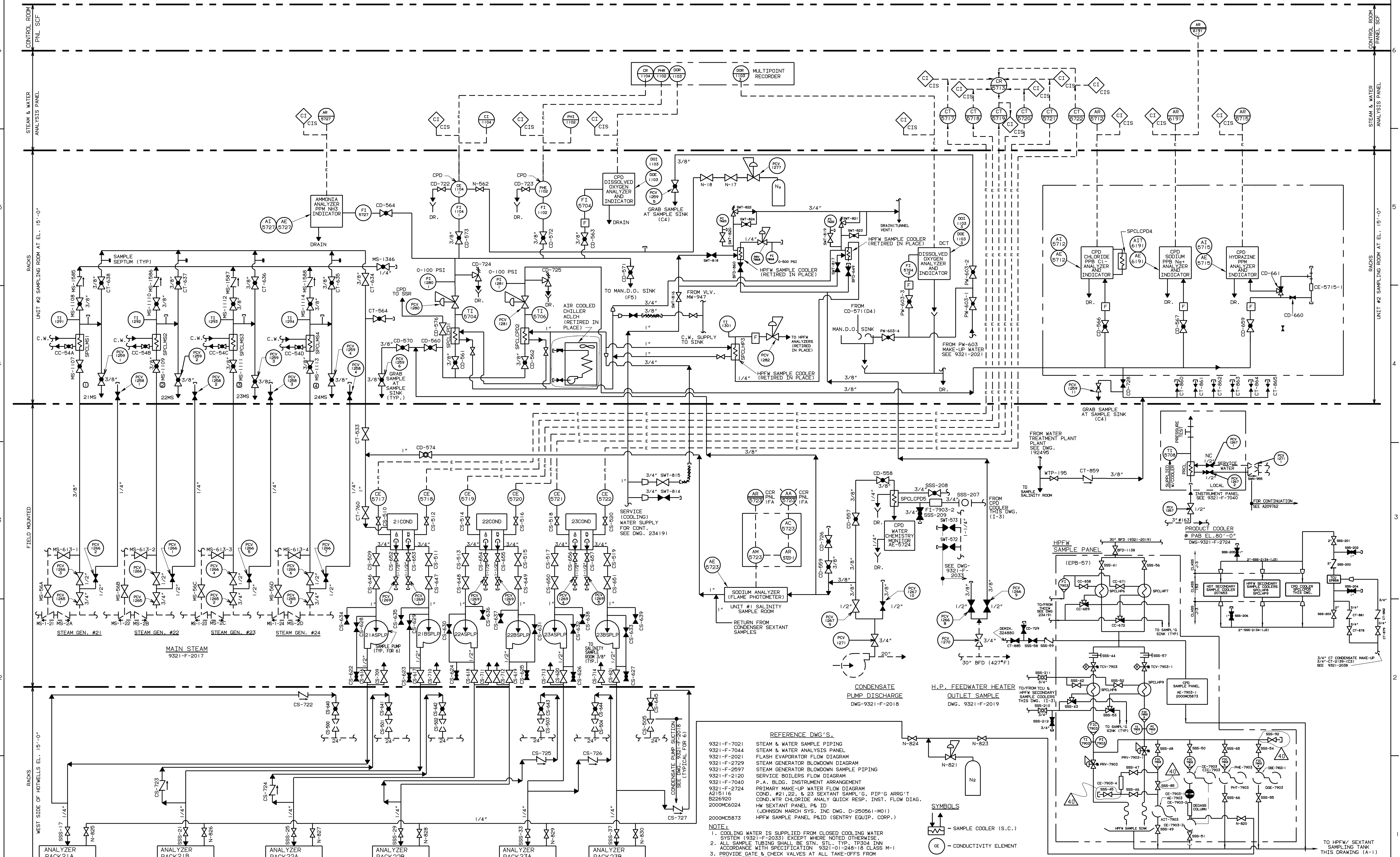
32	INCORPORATED EC-58811	4/6/16	VMR	APPROVAL SIGNATURES ON FILE
REV	DESCRIPTION	DATE	BY	CHKD
1		04/10/03	M.RADWANSKY	
2				

THIS REVISION IS CLASS A PER THE QAPD. UPDATED DWG TO SHOW THE WORK DONE ON MOD. PROC # FTX-91-07049-M, DMT-07049 SH. 61, & DMD251783-AN REV. 00 RELEASED AS CONSTRUCTED P.N. 07049-S1

6/26/92	G.B.	F.A. W.J. KING	6-26-92
DATE	DR.	SUPV.	DESIGN
			ENG.

TITLE: FLOW DIAGRAM AUXILIARY COOLANT SYSTEM RESIDUAL HEAT REMOVAL PUMPS -		STATION INDIAN POINT	
UFSAR FIGURE No. 9.3-1 (SHT. 3)		DWG. NO. A251783-32	
SCALE: NONE	REC'D	APPROVALS	MY

9321-F-7020



REFERENCE DWG'S.

- 9321-F-7021 STEAM & WATER SAMPLE PIPING
- 9321-F-7044 STEAM & WATER ANALYSIS PANEL
- 9321-F-2021 FLASH EVAPORATOR FLOW DIAGRAM
- 9321-F-2729 STEAM GENERATOR BLOWDOWN SAMPLE PIPING
- 9321-F-2597 STEAM GENERATOR BLOWDOWN SAMPLE PIPING
- 9321-F-2120 SERVICE BOILERS FLOW DIAGRAM
- 9321-F-7040 P.A. BLDG. INSTRUMENT ARRANGEMENT
- 9321-F-2724 PRIMARY MAKE-UP WATER FLOW DIAGRAM
- A215116 COND. #21, 22, & 23 SEXTANT SAMPL'G. PIP'G ARR'G'T
- B226920 COND. WTR. CHLORIDE ANALY. QUICK RESP. INST. FLOW DIAG.
- 2000MC6024 HW SEXTANT PANEL P&ID (JOHNSON MARCH SYS. INC. D-280561-M01)
- 2000MC6873 HFW SAMPLE PANEL P&ID (SENTRY EQUIP. CORP.)

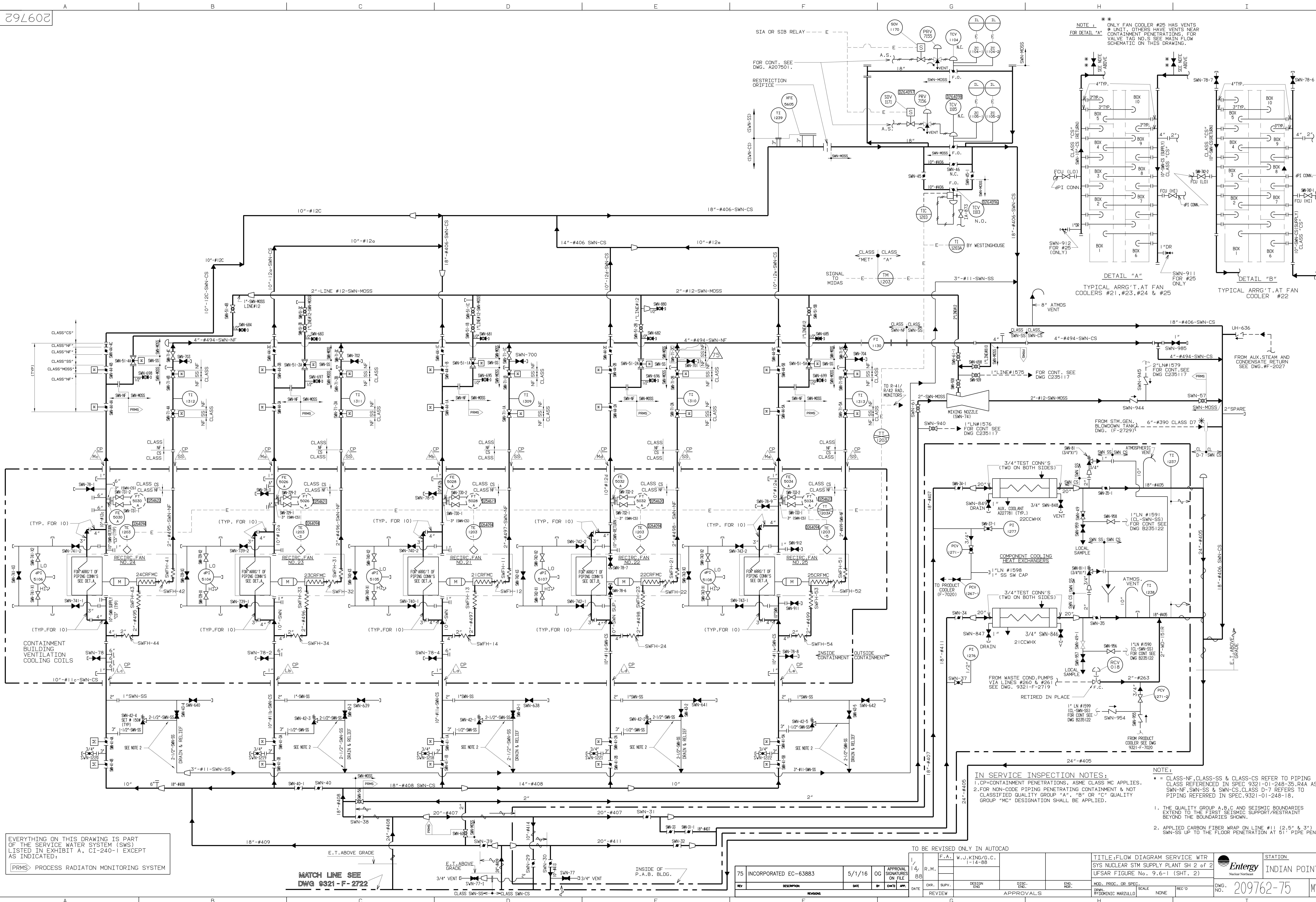
NOTE:

- COOLING WATER IS SUPPLIED FROM CLOSED COOLING WATER SYSTEM (9321-F-2033) EXCEPT WHERE NOTED OTHERWISE.
- ALL SAMPLE TUBING SHALL BE STN. STL. TYP. TP304 INN. ACCORDANCE WITH SPECIFICATION 9321-01-248-18 CLASS M-1 CITY WATER LINES
- PROVIDE GATE & CHECK VALVES AT ALL TAKE-OFFS FROM CITY WATER LINES

SYMBOLS

- (SC) - SAMPLE COOLER (S.C.)
- (CE) - CONDUCTIVITY ELEMENT
- (B) - BULKHEAD, SEE DWG. 9321-F-7044

FROM HFW SAMPLE PANEL THIS DWG. (I-1)		TO HW SEXTANT SAMPLE TANK (TYP.)		TO HW SEXTANT SAMPLING TANK		TO HFW/ SEXTANT SAMPLING TANK THIS DRAWING (A-1)	
<p>ANALYZER RACK 21A P&ID DWG. 2000MC6024</p> <p>ANALYZER RACK 22B P&ID DWG. 2000MC6024</p> <p>ANALYZER RACK 23A P&ID DWG. 2000MC6024</p> <p>ANALYZER RACK 23B P&ID DWG. 2000MC6024</p>				<p>CONDENSATE PUMP SECTION (TYPICAL FOR C1)</p>			
<p>40 INCORPORATED EC-54306</p>		<p>12/4/14</p>		<p>APPROVAL SIGNATURES ON FILE</p>		<p>UFSAR FIGURE No. 9.4-2</p>	
<p>REVISIONS</p>		<p>DATE</p>		<p>BY</p>		<p>SCALE NONE</p>	
<p>TITLE: STEAM & WATER ANALYSIS SYSTEM SAMPLING DIAGRAM</p>				<p>STATION INDIAN POINT</p>			
<p>DWG. NO. 9321-F-7020-40</p>				<p>MY</p>			



NOTE: ** ONLY FAN COOLER #25 HAS VENTS NEAR CONTAINMENT PENETRATIONS. FOR VALVE TAG NO.'S SEE MAIN FLOW SCHEMATIC ON THIS DRAWING.

DETAIL "A"
TYPICAL ARR'G'T. AT FAN COOLERS #21, #23, #24 & #25

DETAIL "B"
TYPICAL ARR'G'T. AT FAN COOLER #22

IN SERVICE INSPECTION NOTES:

1. CP=CONTAINMENT PENETRATIONS, ASME CLASS MC APPLIES.
2. FOR NON-CODE PIPING PENETRATING CONTAINMENT & NOT CLASSIFIED QUALITY GROUP "A", "B" OR "C" QUALITY GROUP "MC" DESIGNATION SHALL BE APPLIED.

NOTE:

1. CLASS-NF CLASS-SS & CLASS-CS REFER TO PIPING CLASS REFERENCED IN SPEC 9321-01-248-35, R4A AS SWN-NF, SWN-SS & SWN-CS. CLASS D-7 REFERS TO PIPING REFERRED IN SPEC 9321-01-248-18.
2. APPLIED CARBON FIBER WRAP ON LINE #11 (2.5" & 3") SWN-SS UP TO THE FLOOR PENETRATION AT 51" PIPE PEN.

EVERYTHING ON THIS DRAWING IS PART OF THE SERVICE WATER SYSTEM (SWS) LISTED IN EXHIBIT A, CI-240-1 EXCEPT AS INDICATED:

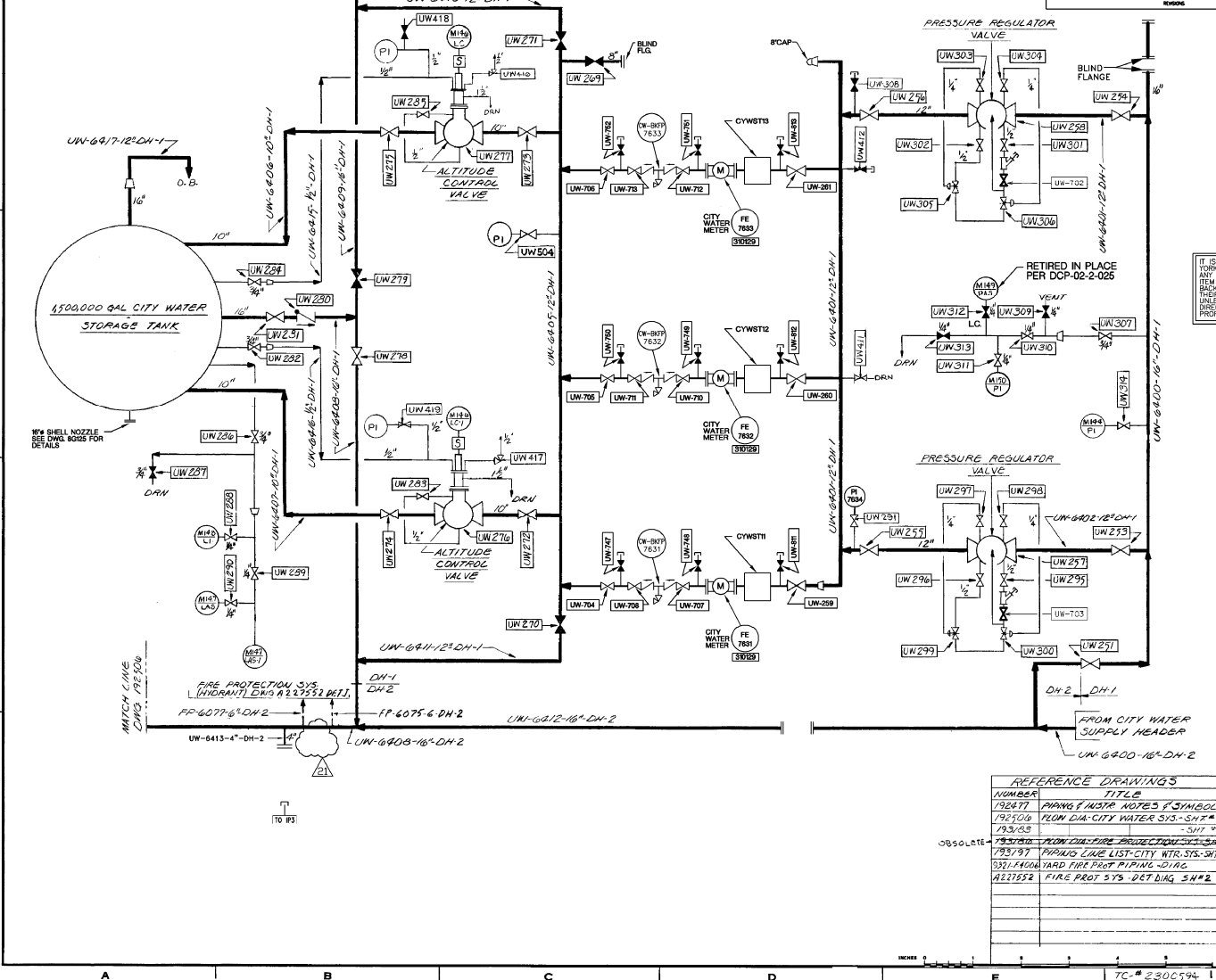
(PRMS) PROCESS RADIATION MONITORING SYSTEM

MATCH LINE SEE DWG 9321-F-2722

75 INCORPORATED EC-63883				5/1/16	DC	APPROVAL SIGNATURES ON FILE		F.A. W.J. KING/G.C. 1-14-88		TITLE: FLOW DIAGRAM SERVICE WTR SYS NUCLEAR STM SUPPLY PLANT SH 2 of 2		STATION INDIAN POINT	
REV	DESCRIPTION	DATE	BY	CHKD	APP	DATE	REVIEW	DESIGN	DISC.	ENG. NR.	MOD. PROC. OR SPEC.	SCALE	REC'D

192505-21
 CITY WATER
 PIPING FLOW DIAGRAM
 UNIT NR 1

REV	DESCRIPTION	DATE	BY	CHKD	APP'D	REVISIONS
P1	INCORPORATED EE-23341	8/17/10	JL			17



IT IS A VIOLATION OF NEW YORK EDUCATION LAW FOR ANY PERSON TO ALTER ANY ITEM ASSOCIATED WITH THE BADGELOW PRESENTED AND THEIR VALUES IN ANY WAY UNLESS UNDER THE DIRECTION OF A LICENSED PROFESSIONAL ENGINEER

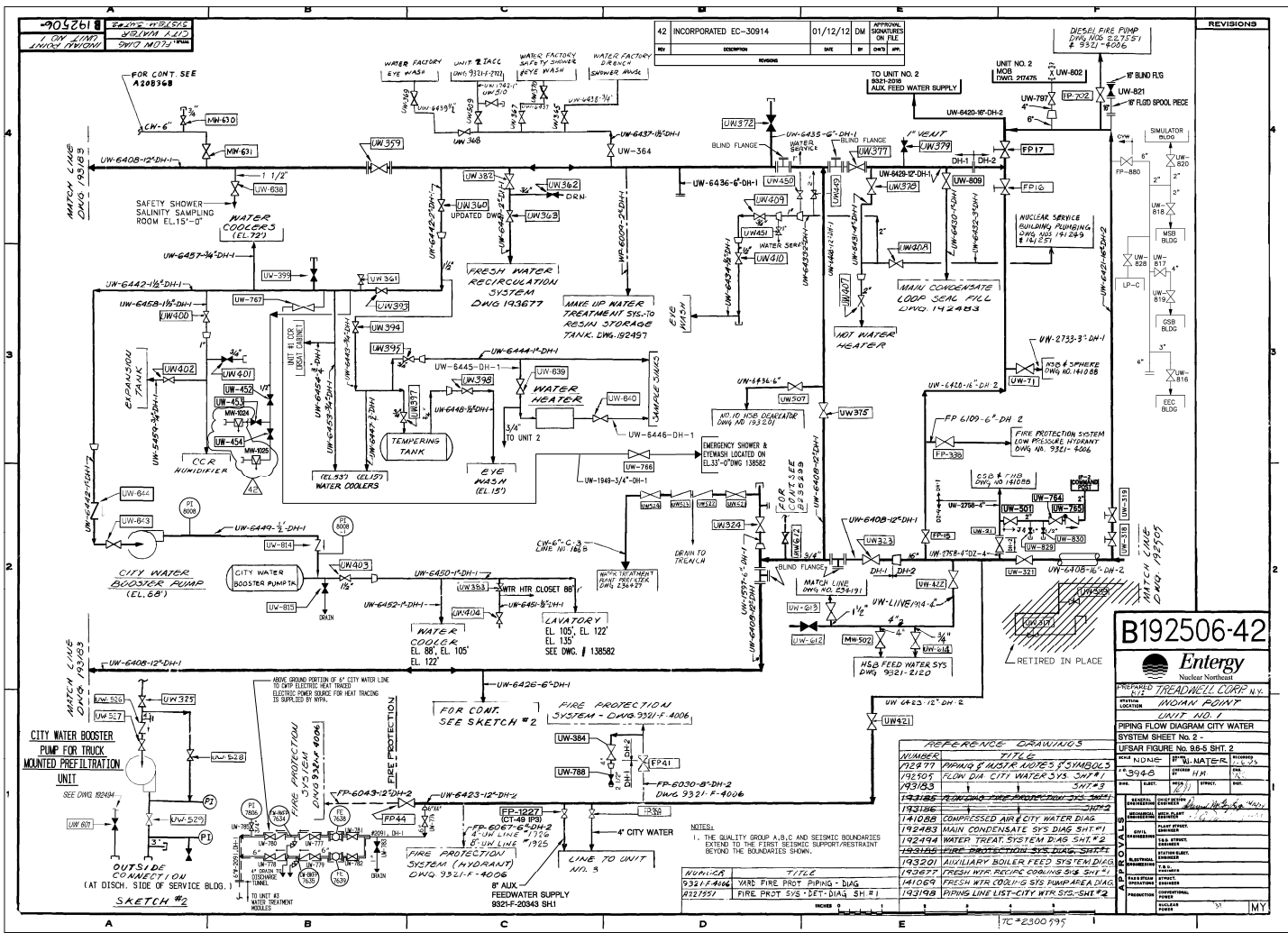
B 192505-21

Entergy
 Nuclear Northeast
 TREADWELL CORP. NY
 INDIAN POINT
 UNIT NR 1
 PIPING FLOW DIAGRAM
 CITY WATER SYSTEM SHEET No. 1
 UFSAR FIGURE No. 9.6-5 (SHT. 1)

NUMBER	TITLE
192477	PIPING & INSTR. NOTES & SYMBOLS
192709	PIPING DIA. CITY WATER SIS. - SHT. #2
193035	PIPING DIA. CITY WATER SIS. - SHT. #3
193787	PIPING DIA. FIRE PROTECTION SYS. SHEET #1
332174006	YARD FIRE PROT. PIPING - DIAG.
4211932	FIRE PROT. SYS. - DET. BLDG. 3H#2

REVISION	DATE	BY	CHKD	APP'D
3942	8/17/10	JL		

TC-2300594-1



B192506-42

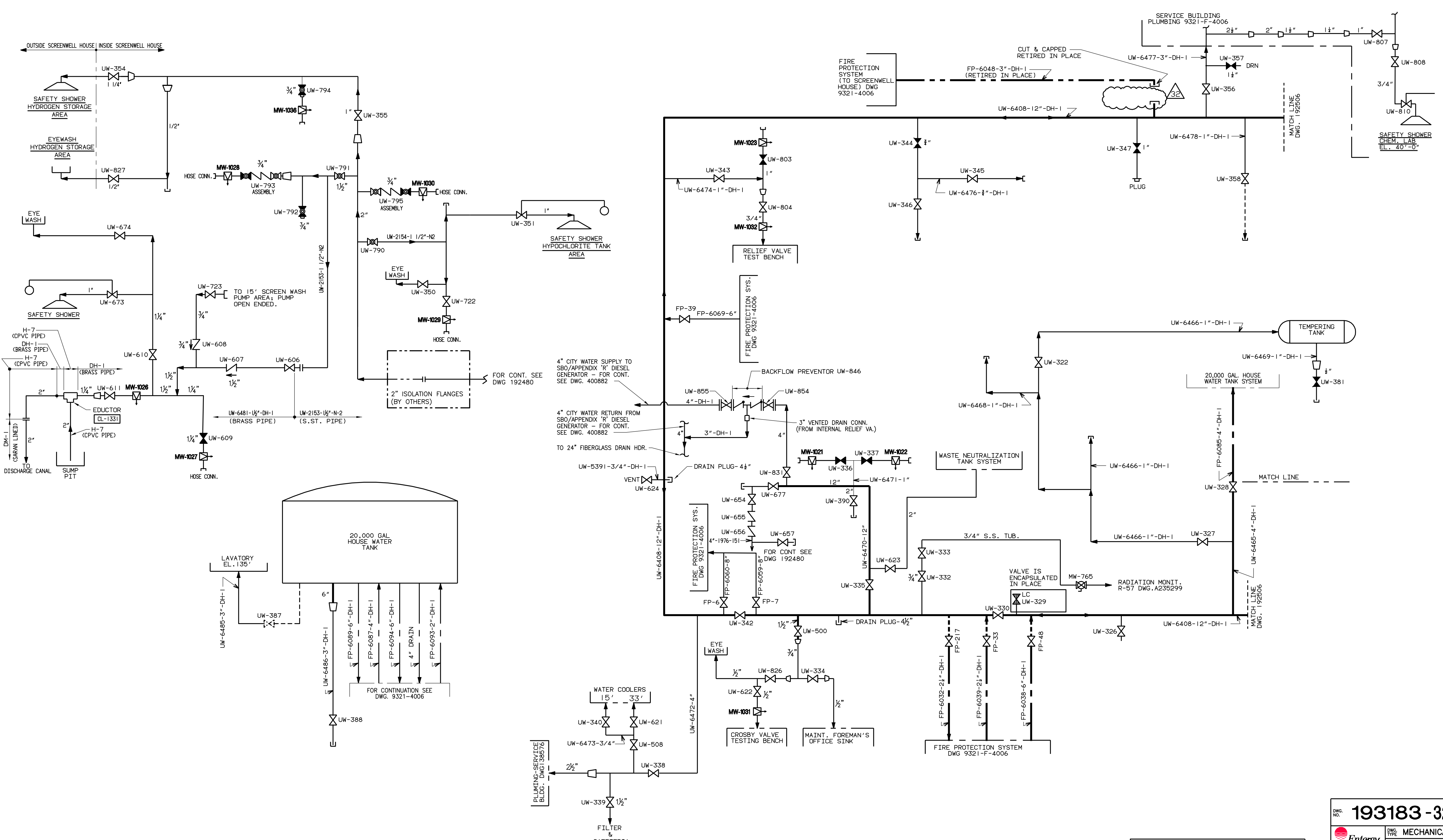
PREPARED BY	TREADWELL CORP. N.Y.
CHECKED BY	[signature]
DESIGNED BY	[signature]
DRAWN BY	[signature]
DATE	12/15/11
SCALE	AS SHOWN
SHEET NO.	9946
TOTAL SHEETS	10
PROJECT NO.	9321-210
UNIT NO.	1
SYSTEM SHEET NO.	2
USAR FIGURE NO.	98-5 SHT. 2
SHEET NO.	9946
TITLE	PIPING FLOW DIAGRAM CITY WATER
REV	1
DATE	12/15/11
BY	[signature]
APP'D	[signature]

NUMBER	TITLE
19277	PIPING INSTR. LINES & SYMBOLS
19205	FLOW DIA CITY WATER SYS. SHT #1
19383	PIPING FLOW DIAGRAM CITY WATER
193196	COMPRESSED AIR & CITY WATER DIAG
141088	COMPRESSED AIR & CITY WATER DIAG
192483	MAIN CONDENSATE SYS DIAG SHT #1
192494	WATER TREAT SYSTEM DIAG SHT #2
192493	FIRE PROTECTION SYS DIAG SHT #1
193201	AUXILIARY BOILER FEED SYSTEM DIAG
193477	FRESH WTR RECIRC. CONTROL DIA SHT #1
141068	FRESH WTR COOLING SYS HANDBOOK DIA
193198	PIPING LINE LIST-CITY WTR SYS-SHT #2

NOTES:
 1. THE QUALITY GROUP A,B,C AND SEISMIC BOUNDARIES EXTEND TO THE FIRST SEISMIC SUPPORT/RESTRAINT BEYOND THE BOUNDARIED SHOWING.

TC=2300 795

193183-32



NUMBER	TITLE
192477	PIPING & INSTR. NOTES & SYMBOLS
192505	FLOW DIA-CITY WATER SYS. -SHT#1
192480	PIPING LINE LIST CITY WATER SYS. -SHT#2
192482	MAIN CONDENSATE CIRC. WATER DIAG.
192483	CONDENSATE RETURN SYS. DIAG. -SHT#1
192484	CONDENSATE RETURN SYS. DIAG. -SHT#2
192486	CONDENSATE RETURN SYS. DIAG. -SHT#3
192489	CONDENSATE AIR REMOVAL DIAG.
193159	PIPING LINE LIST CITY WATER SYS. -SHT#3
9321-F-4006	YARD FIRE PROT PIPING-DIAG.
A227551	FIRE PROT. SYS.-DET.-DIAG. SH.1
A227552	SH.2
A227553	SH.3
A227554	SH.4
A231568	SCREEN WELL HOUSE #1 EL. 1560"

DWG. NO. 193183-32

Entergy MECHANICAL
MEMBER OF THE
 DUC P&S A

LOCATION: **INDIAN POINT**

TITLE: **UNIT No. 1 PIPING FLOW DIAG. CITY WATER SYSTEM SHEET No. 3 UFSAR Fl. No. 9.6-5 (SHT. 3)**

APPROVALS

ENGINEERING MANAGER: _____

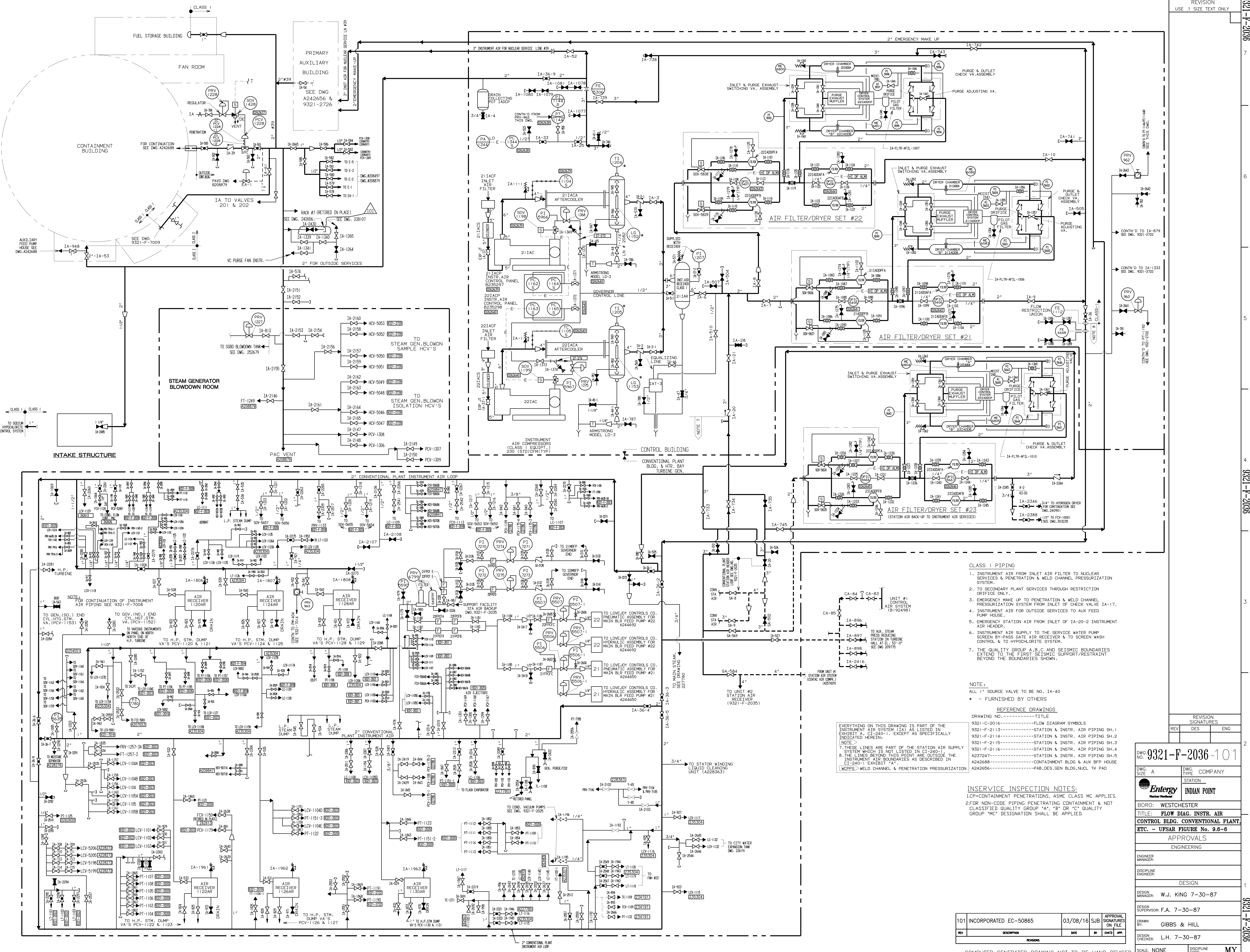
PROJECT ENGINEER: _____

DESIGNER: _____

DRAWN BY: **M. HEREDIA**

SCALE: _____ DISCIPLINE CODE: **MB**

193183-32



- CLASS I PIPING**
1. INSTRUMENT AIR FROM INLET AIR FILTER TO NUCLEAR SERVICES & PENETRATION & WELD CHANNEL PRESSURIZATION SYSTEM.
 2. TO SECONDARY PLANT SERVICES THROUGH RESTRICTION ORIFICE ONLY.
 3. EMERGENCY MAKE UP TO PENETRATION & WELD CHANNEL PRESSURIZATION SYSTEM FROM INLET OF CHECK VALVE IA-17.
 4. INSTRUMENT AIR FOR OUTSIDE SERVICES TO AUX FEED PUMP HOUSE.
 5. EMERGENCY STATION AIR FROM INLET OF IA-20-2 INSTRUMENT AIR HEADER.
 6. INSTRUMENT AIR SUPPLY TO THE SERVICE WATER PUMP SCREEN BY-PASS GATE AIR RECEIVER & TO SCREEN WASH CONTROL & TO HYDROCLORITE SYSTEM.
 7. THE QUALITY GROUP A,B,C AND SEISMIC BOUNDARIES EXTEND TO THE FIRST SEISMIC SUPPORT/RESTRAINT BEYOND THE BOUNDARIES SHOWN.

NOTE:
 ALL 1" SOURCE VALVE TO BE NO. IA-40
 - FURNISHED BY OTHERS

REFERENCE DRAWINGS

EVERYTHING ON THIS DRAWING IS PART OF THE INSTRUMENT AIR SYSTEM (IA) AS LISTED IN EXHIBIT A, CI-240-1, EXCEPT AS SPECIFICALLY INDICATED HEREIN:

- 7. THESE LINES ARE PART OF THE STATION AIR SUPPLY SYSTEM WHICH IS NOT LISTED IN CI-240-1
- 8. THE LINES BEYOND THIS POINT ARE OUTSIDE THE INSTRUMENT AIR BOUNDARIES AS DESCRIBED IN CI-240-1 EXHIBIT "A".

(ICRPS)-WELD CHANNEL & PENETRATION PRESSURIZATION

INSERVICE INSPECTION NOTES:
 1. ICP=CONTAINMENT PENETRATIONS, ASME CLASS MC APPLIES.
 2. FOR NON-CODE PIPING PENETRATING CONTAINMENT & NOT CLASSIFIED QUALITY GROUP "A", "B" OR "C" QUALITY GROUP "MC" DESIGNATION SHALL BE APPLIED.

REV	DES	ENG

DWG NO. **9321-F-2036-101**

DWG SIZE: A DWG TYPE: COMPANY

STATION: INDIAN POINT

BORO: WESTCHESTER

TITLE: **FLOW DIAG. INSTR. AIR CONTROL BLDG. CONVENTIONAL PLANT, ETC. - UFSAR FIGURE No. 9.6-6**

APPROVALS

ENGINEERING

DESIGN

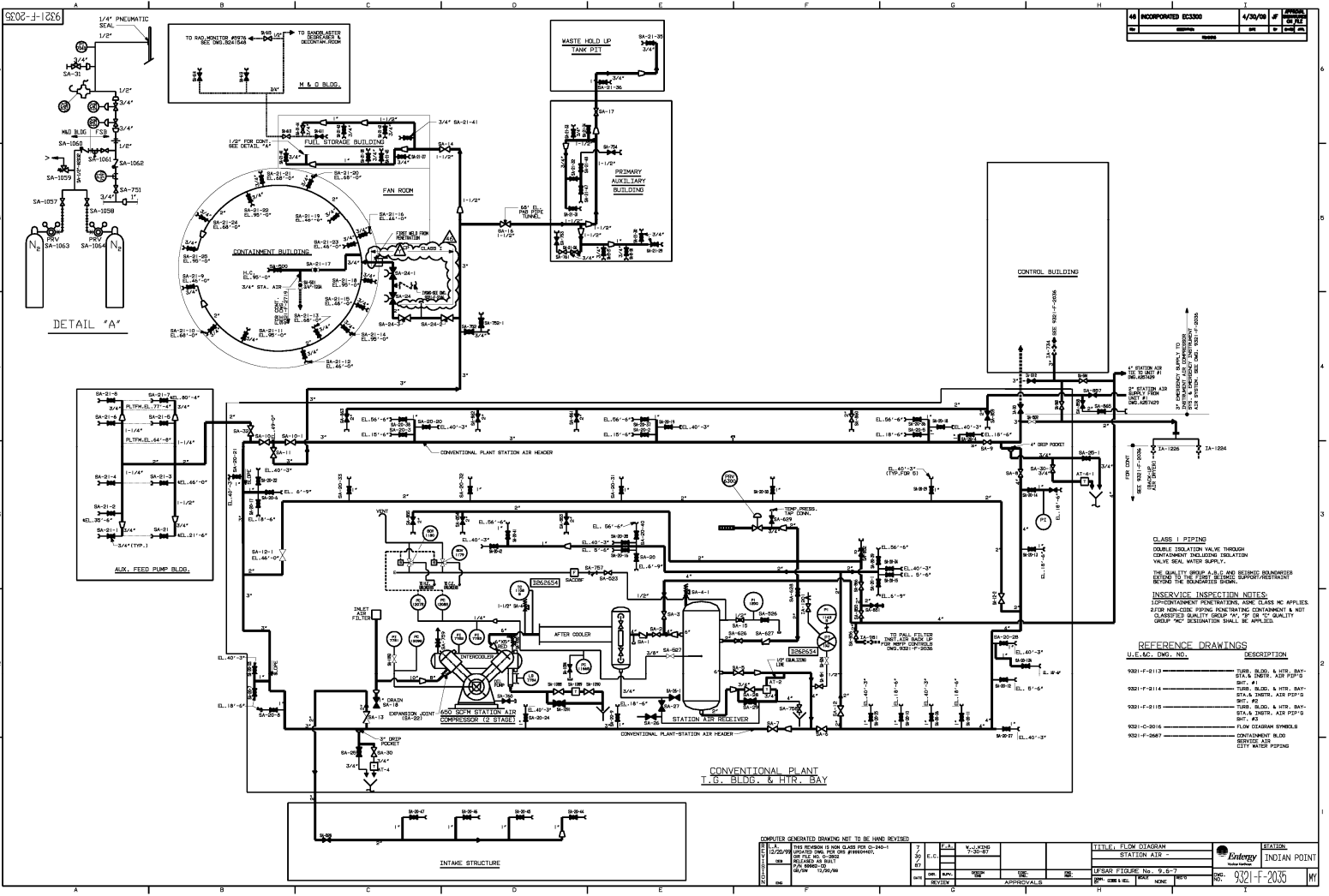
DESIGN MANAGER: W.J. KING 7-30-87

DESIGN SUPERVISOR: F.A. 7-30-87

DRAWN BY: GIBBS & HILL

DESIGN CHECKER: L.H. 7-30-87

SCALE: NONE DISCIPLINE CODE: MY



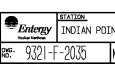
46	INCORPORATED EC300	4/23/98	1	1
NO.	REV.	DATE	BY	CHK.

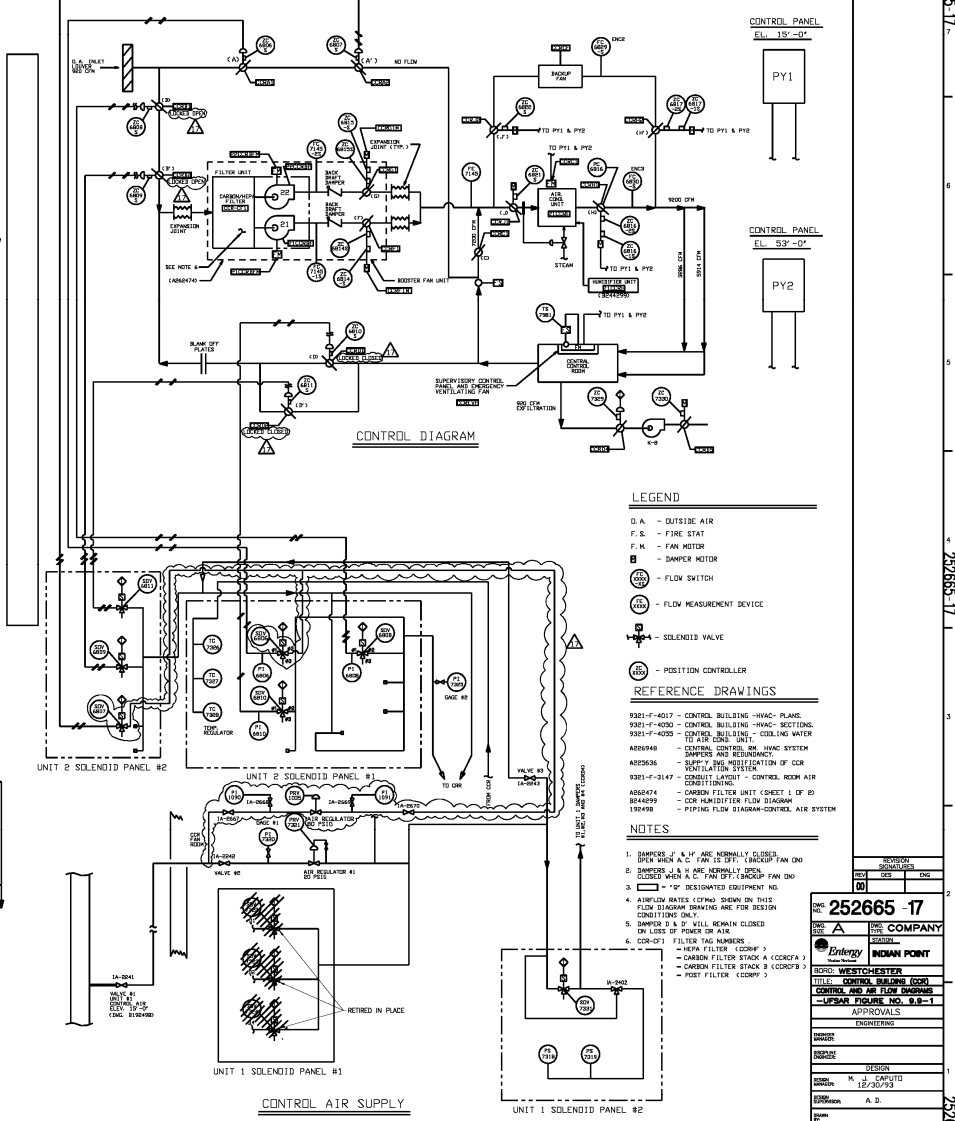
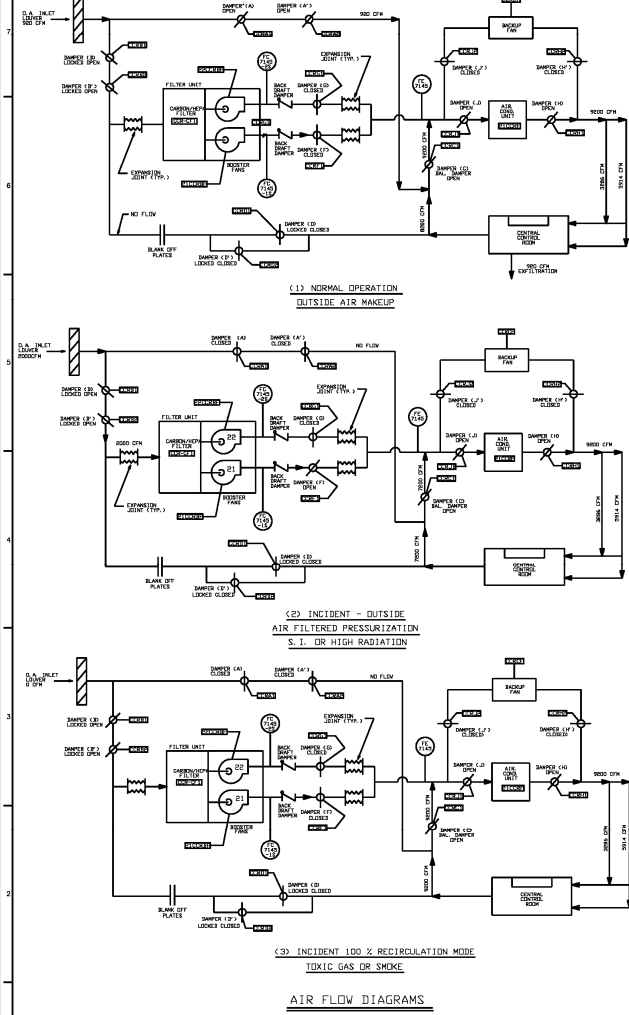
CLASS I PIPING
 DOUBLE ISOLATION VALVE THROUGH CONTAINMENT BUILDING ISOLATION VALVE SEAL WATER SUPPLY.
 THE QUALITY GROUP A, B, C AND BEHIND COMPRESSOR SECTION IS TO BE QUALITY GROUP A SUPPORT STRUCTURE.
INSERVICE INSPECTION NOTES:
 1) CONTAINMENT PENETRATIONS ASSESS CLASS NC APPLIES.
 2) IF NON-CODE PIPING, INSPECTING CONTRACTOR IS NOT CLASSIFIED QUALITY GROUP 'A' OR 'C' QUALITY GROUP 'A' DESIGNATION SHALL BE APPLIED.

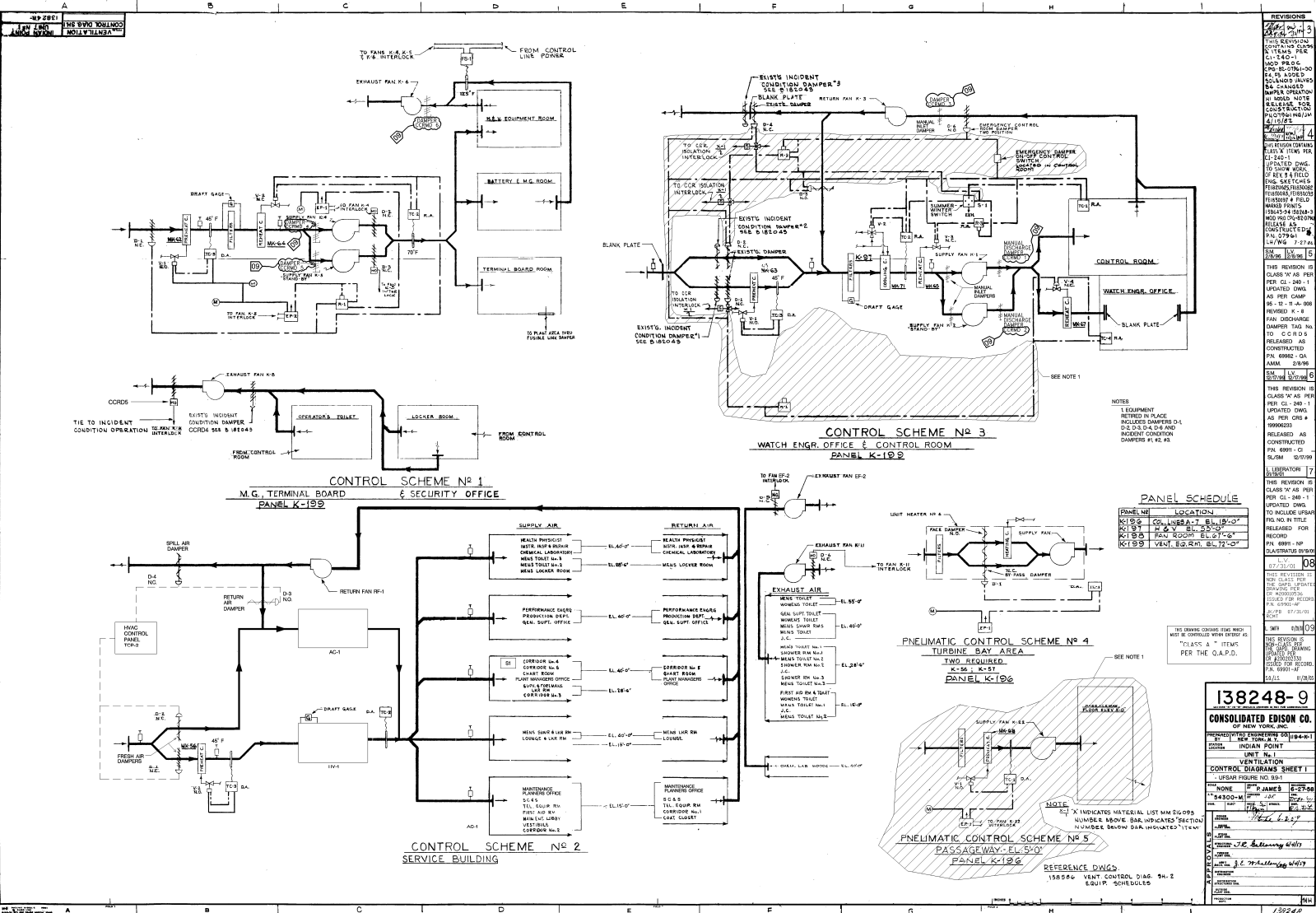
U.E. NO.	DWG. NO.	DESCRIPTION
9321-F-0113		TURB. BLDG. & HTR. BAY STATION AIR SHIP #1
9321-F-0114		TURB. BLDG. & HTR. BAY STATION AIR SHIP #2
9321-F-0115		TURB. BLDG. & HTR. BAY STATION AIR SHIP #3
9321-F-0116		TURB. BLDG. & HTR. BAY STATION AIR SHIP #4
9321-F-0117		TURB. BLDG. & HTR. BAY STATION AIR SHIP #5
9321-F-0118		TURB. BLDG. & HTR. BAY STATION AIR SHIP #6
9321-F-0119		TURB. BLDG. & HTR. BAY STATION AIR SHIP #7
9321-F-0120		TURB. BLDG. & HTR. BAY STATION AIR SHIP #8
9321-F-0121		TURB. BLDG. & HTR. BAY STATION AIR SHIP #9
9321-F-0122		TURB. BLDG. & HTR. BAY STATION AIR SHIP #10
9321-F-0123		TURB. BLDG. & HTR. BAY STATION AIR SHIP #11
9321-F-0124		TURB. BLDG. & HTR. BAY STATION AIR SHIP #12
9321-F-0125		TURB. BLDG. & HTR. BAY STATION AIR SHIP #13
9321-F-0126		TURB. BLDG. & HTR. BAY STATION AIR SHIP #14
9321-F-0127		TURB. BLDG. & HTR. BAY STATION AIR SHIP #15
9321-F-0128		TURB. BLDG. & HTR. BAY STATION AIR SHIP #16
9321-F-0129		TURB. BLDG. & HTR. BAY STATION AIR SHIP #17
9321-F-0130		TURB. BLDG. & HTR. BAY STATION AIR SHIP #18
9321-F-0131		TURB. BLDG. & HTR. BAY STATION AIR SHIP #19
9321-F-0132		TURB. BLDG. & HTR. BAY STATION AIR SHIP #20

DESIGNED BY	DATE	7/13/98	7/13/98	7/13/98	7/13/98
CHECKED BY	DATE	7/13/98	7/13/98	7/13/98	7/13/98
APPROVED BY	DATE	7/13/98	7/13/98	7/13/98	7/13/98
REVISION	DATE	7/13/98	7/13/98	7/13/98	7/13/98

TITLE	STATION AIR	DATE	7/13/98
PROJECT	INDIAN POINT	DATE	7/13/98
SCALE	AS SHOWN	DATE	7/13/98
BY	9321-F-2036	DATE	7/13/98







NO.	DATE	BY	REVISIONS
1	11/20/50	J.P.	REVISED AS PER O&P
2	12/15/50	J.P.	REVISED AS PER O&P
3	1/10/51	J.P.	REVISED AS PER O&P
4	2/5/51	J.P.	REVISED AS PER O&P
5	3/15/51	J.P.	REVISED AS PER O&P
6	4/10/51	J.P.	REVISED AS PER O&P
7	5/5/51	J.P.	REVISED AS PER O&P
8	6/10/51	J.P.	REVISED AS PER O&P
9	7/15/51	J.P.	REVISED AS PER O&P
10	8/20/51	J.P.	REVISED AS PER O&P
11	9/25/51	J.P.	REVISED AS PER O&P
12	10/30/51	J.P.	REVISED AS PER O&P
13	11/25/51	J.P.	REVISED AS PER O&P
14	12/20/51	J.P.	REVISED AS PER O&P
15	1/15/52	J.P.	REVISED AS PER O&P
16	2/10/52	J.P.	REVISED AS PER O&P
17	3/5/52	J.P.	REVISED AS PER O&P
18	4/10/52	J.P.	REVISED AS PER O&P
19	5/5/52	J.P.	REVISED AS PER O&P
20	6/10/52	J.P.	REVISED AS PER O&P
21	7/15/52	J.P.	REVISED AS PER O&P
22	8/20/52	J.P.	REVISED AS PER O&P
23	9/25/52	J.P.	REVISED AS PER O&P
24	10/30/52	J.P.	REVISED AS PER O&P
25	11/25/52	J.P.	REVISED AS PER O&P
26	12/20/52	J.P.	REVISED AS PER O&P
27	1/15/53	J.P.	REVISED AS PER O&P
28	2/10/53	J.P.	REVISED AS PER O&P
29	3/5/53	J.P.	REVISED AS PER O&P
30	4/10/53	J.P.	REVISED AS PER O&P
31	5/5/53	J.P.	REVISED AS PER O&P
32	6/10/53	J.P.	REVISED AS PER O&P
33	7/15/53	J.P.	REVISED AS PER O&P
34	8/20/53	J.P.	REVISED AS PER O&P
35	9/25/53	J.P.	REVISED AS PER O&P
36	10/30/53	J.P.	REVISED AS PER O&P
37	11/25/53	J.P.	REVISED AS PER O&P
38	12/20/53	J.P.	REVISED AS PER O&P
39	1/15/54	J.P.	REVISED AS PER O&P
40	2/10/54	J.P.	REVISED AS PER O&P
41	3/5/54	J.P.	REVISED AS PER O&P
42	4/10/54	J.P.	REVISED AS PER O&P
43	5/5/54	J.P.	REVISED AS PER O&P
44	6/10/54	J.P.	REVISED AS PER O&P
45	7/15/54	J.P.	REVISED AS PER O&P
46	8/20/54	J.P.	REVISED AS PER O&P
47	9/25/54	J.P.	REVISED AS PER O&P
48	10/30/54	J.P.	REVISED AS PER O&P
49	11/25/54	J.P.	REVISED AS PER O&P
50	12/20/54	J.P.	REVISED AS PER O&P

138248-9

CONSOLIDATED EDISON CO.
OF NEW YORK, INC.

INDIAN POINT

UNIT No. 1
VENTILATION

CONTROL DIAGRAMS SHEET 1

LEGEND

None	None	None
1/2" Dia	1/2" Dia	1/2" Dia
1/4" Dia	1/4" Dia	1/4" Dia
1/8" Dia	1/8" Dia	1/8" Dia
1/16" Dia	1/16" Dia	1/16" Dia
1/32" Dia	1/32" Dia	1/32" Dia
1/64" Dia	1/64" Dia	1/64" Dia
1/128" Dia	1/128" Dia	1/128" Dia
1/256" Dia	1/256" Dia	1/256" Dia
1/512" Dia	1/512" Dia	1/512" Dia
1/1024" Dia	1/1024" Dia	1/1024" Dia
1/2048" Dia	1/2048" Dia	1/2048" Dia
1/4096" Dia	1/4096" Dia	1/4096" Dia
1/8192" Dia	1/8192" Dia	1/8192" Dia
1/16384" Dia	1/16384" Dia	1/16384" Dia
1/32768" Dia	1/32768" Dia	1/32768" Dia
1/65536" Dia	1/65536" Dia	1/65536" Dia
1/131072" Dia	1/131072" Dia	1/131072" Dia
1/262144" Dia	1/262144" Dia	1/262144" Dia
1/524288" Dia	1/524288" Dia	1/524288" Dia
1/1048576" Dia	1/1048576" Dia	1/1048576" Dia
1/2097152" Dia	1/2097152" Dia	1/2097152" Dia
1/4194304" Dia	1/4194304" Dia	1/4194304" Dia
1/8388608" Dia	1/8388608" Dia	1/8388608" Dia
1/16777216" Dia	1/16777216" Dia	1/16777216" Dia
1/33554432" Dia	1/33554432" Dia	1/33554432" Dia
1/67108864" Dia	1/67108864" Dia	1/67108864" Dia
1/134217728" Dia	1/134217728" Dia	1/134217728" Dia
1/268435456" Dia	1/268435456" Dia	1/268435456" Dia
1/536870912" Dia	1/536870912" Dia	1/536870912" Dia
1/1073741824" Dia	1/1073741824" Dia	1/1073741824" Dia
1/2147483648" Dia	1/2147483648" Dia	1/2147483648" Dia
1/4294967296" Dia	1/4294967296" Dia	1/4294967296" Dia
1/8589934592" Dia	1/8589934592" Dia	1/8589934592" Dia
1/17179869184" Dia	1/17179869184" Dia	1/17179869184" Dia
1/34359738368" Dia	1/34359738368" Dia	1/34359738368" Dia
1/68719476736" Dia	1/68719476736" Dia	1/68719476736" Dia
1/137438953472" Dia	1/137438953472" Dia	1/137438953472" Dia
1/274877906944" Dia	1/274877906944" Dia	1/274877906944" Dia
1/549755813888" Dia	1/549755813888" Dia	1/549755813888" Dia
1/1099511627776" Dia	1/1099511627776" Dia	1/1099511627776" Dia
1/2199023255552" Dia	1/2199023255552" Dia	1/2199023255552" Dia
1/4398046511104" Dia	1/4398046511104" Dia	1/4398046511104" Dia
1/8796093022208" Dia	1/8796093022208" Dia	1/8796093022208" Dia
1/17592186444416" Dia	1/17592186444416" Dia	1/17592186444416" Dia
1/35184372888832" Dia	1/35184372888832" Dia	1/35184372888832" Dia
1/70368745777664" Dia	1/70368745777664" Dia	1/70368745777664" Dia
1/140737491555328" Dia	1/140737491555328" Dia	1/140737491555328" Dia
1/281474983110656" Dia	1/281474983110656" Dia	1/281474983110656" Dia
1/562949966221312" Dia	1/562949966221312" Dia	1/562949966221312" Dia
1/1125899932422624" Dia	1/1125899932422624" Dia	1/1125899932422624" Dia
1/2251799864845248" Dia	1/2251799864845248" Dia	1/2251799864845248" Dia
1/4503599729690496" Dia	1/4503599729690496" Dia	1/4503599729690496" Dia
1/9007199459380992" Dia	1/9007199459380992" Dia	1/9007199459380992" Dia
1/18014398918761984" Dia	1/18014398918761984" Dia	1/18014398918761984" Dia
1/36028797837523968" Dia	1/36028797837523968" Dia	1/36028797837523968" Dia
1/72057595675047936" Dia	1/72057595675047936" Dia	1/72057595675047936" Dia
1/14411519135009584" Dia	1/14411519135009584" Dia	1/14411519135009584" Dia
1/28823038270019168" Dia	1/28823038270019168" Dia	1/28823038270019168" Dia
1/57646076540038336" Dia	1/57646076540038336" Dia	1/57646076540038336" Dia
1/115292153080076672" Dia	1/115292153080076672" Dia	1/115292153080076672" Dia
1/230584306160153344" Dia	1/230584306160153344" Dia	1/230584306160153344" Dia
1/461168612320306688" Dia	1/461168612320306688" Dia	1/461168612320306688" Dia
1/922337224640613376" Dia	1/922337224640613376" Dia	1/922337224640613376" Dia
1/1844674449281226752" Dia	1/1844674449281226752" Dia	1/1844674449281226752" Dia
1/3689348898562453504" Dia	1/3689348898562453504" Dia	1/3689348898562453504" Dia
1/7378697797124907008" Dia	1/7378697797124907008" Dia	1/7378697797124907008" Dia
1/1475739558424984016" Dia	1/1475739558424984016" Dia	1/1475739558424984016" Dia
1/2951479116849968032" Dia	1/2951479116849968032" Dia	1/2951479116849968032" Dia
1/5902958233699936064" Dia	1/5902958233699936064" Dia	1/5902958233699936064" Dia
1/11805916467399872128" Dia	1/11805916467399872128" Dia	1/11805916467399872128" Dia
1/23611832934799744256" Dia	1/23611832934799744256" Dia	1/23611832934799744256" Dia
1/47223665869599488512" Dia	1/47223665869599488512" Dia	1/47223665869599488512" Dia
1/94447331739198977024" Dia	1/94447331739198977024" Dia	1/94447331739198977024" Dia
1/188894663482397954048" Dia	1/188894663482397954048" Dia	1/188894663482397954048" Dia
1/377789326964795908096" Dia	1/377789326964795908096" Dia	1/377789326964795908096" Dia
1/755578653929591816192" Dia	1/755578653929591816192" Dia	1/755578653929591816192" Dia
1/1511157307859183632384" Dia	1/1511157307859183632384" Dia	1/1511157307859183632384" Dia
1/3022314615718367264768" Dia	1/3022314615718367264768" Dia	1/3022314615718367264768" Dia
1/604462923143673529536" Dia	1/604462923143673529536" Dia	1/604462923143673529536" Dia
1/1208925846273547059072" Dia	1/1208925846273547059072" Dia	1/1208925846273547059072" Dia
1/2417851692547094118144" Dia	1/2417851692547094118144" Dia	1/2417851692547094118144" Dia
1/4835703385094188236288" Dia	1/4835703385094188236288" Dia	1/4835703385094188236288" Dia
1/9671406770188376364512" Dia	1/9671406770188376364512" Dia	1/9671406770188376364512" Dia
1/19342813540376752728224" Dia	1/19342813540376752728224" Dia	1/19342813540376752728224" Dia
1/38685627080753505456448" Dia	1/38685627080753505456448" Dia	1/38685627080753505456448" Dia
1/773712541615070109128896" Dia	1/773712541615070109128896" Dia	1/773712541615070109128896" Dia
1/154742508323014021837793" Dia	1/154742508323014021837793" Dia	1/154742508323014021837793" Dia
1/309485016646028043675546" Dia	1/309485016646028043675546" Dia	1/309485016646028043675546" Dia
1/61897003329205608735108" Dia	1/61897003329205608735108" Dia	1/61897003329205608735108" Dia
1/123794006658411211470216" Dia	1/123794006658411211470216" Dia	1/123794006658411211470216" Dia
1/247588013316822422940432" Dia	1/247588013316822422940432" Dia	1/247588013316822422940432" Dia
1/495176026633644845880864" Dia	1/495176026633644845880864" Dia	1/495176026633644845880864" Dia
1/99035205326728969761728" Dia	1/99035205326728969761728" Dia	1/99035205326728969761728" Dia
1/19807041065345793523456" Dia	1/19807041065345793523456" Dia	1/19807041065345793523456" Dia
1/39614082130691587046912" Dia	1/39614082130691587046912" Dia	1/39614082130691587046912" Dia
1/79228164261383174093824" Dia	1/79228164261383174093824" Dia	1/79228164261383174093824" Dia
1/158456328522766348187648" Dia	1/158456328522766348187648" Dia	1/158456328522766348187648" Dia
1/316912657045532696375296" Dia	1/316912657045532696375296" Dia	1/316912657045532696375296" Dia
1/633825314091065392750592" Dia	1/633825314091065392750592" Dia	1/633825314091065392750592" Dia
1/1267650628182131075501184" Dia	1/1267650628182131075501184" Dia	1/1267650628182131075501184" Dia
1/2535301256364262151002368" Dia	1/2535301256364262151002368" Dia	1/2535301256364262151002368" Dia
1/5070602512728524302004736" Dia	1/5070602512728524302004736" Dia	1/5070602512728524302004736" Dia
1/10141205025457048604009472" Dia	1/10141205025457048604009472" Dia	1/10141205025457048604009472" Dia
1/20282410050914097208018944" Dia	1/20282410050914097208018944" Dia	1/20282410050914097208018944" Dia
1/40564820101828193616037888" Dia	1/40564820101828193616037888" Dia	1/40564820101828193616037888" Dia
1/81129640203656387232075776" Dia	1/81129640203656387232075776" Dia	1/81129640203656387232075776" Dia
1/162259284473112774464151552" Dia	1/162259284473112774464151552" Dia	1/162259284473112774464151552" Dia
1/32451856894622554892830304" Dia	1/32451856894622554892830304" Dia	1/32451856894622554892830304" Dia
1/64903713789245109785660608" Dia	1/64903713789245109785660608" Dia	1/64903713789245109785660608" Dia
1/129807427578490219571331216" Dia	1/129807427578490219571331216" Dia	1/129807427578490219571331216" Dia
1/259614855156980439142662432" Dia	1/259614855156980439142662432" Dia	1/259614855156980439142662432" Dia
1/519229710313960878285324864" Dia	1/519229710313960878285324864" Dia	1/519229710313960878285324864" Dia
1/103845942062792175657064928" Dia	1/103845942062792175657064928" Dia	1/103845942062792175657064928" Dia
1/207691884125584351314129856" Dia		