

Lee Nuclear Station – Environmental

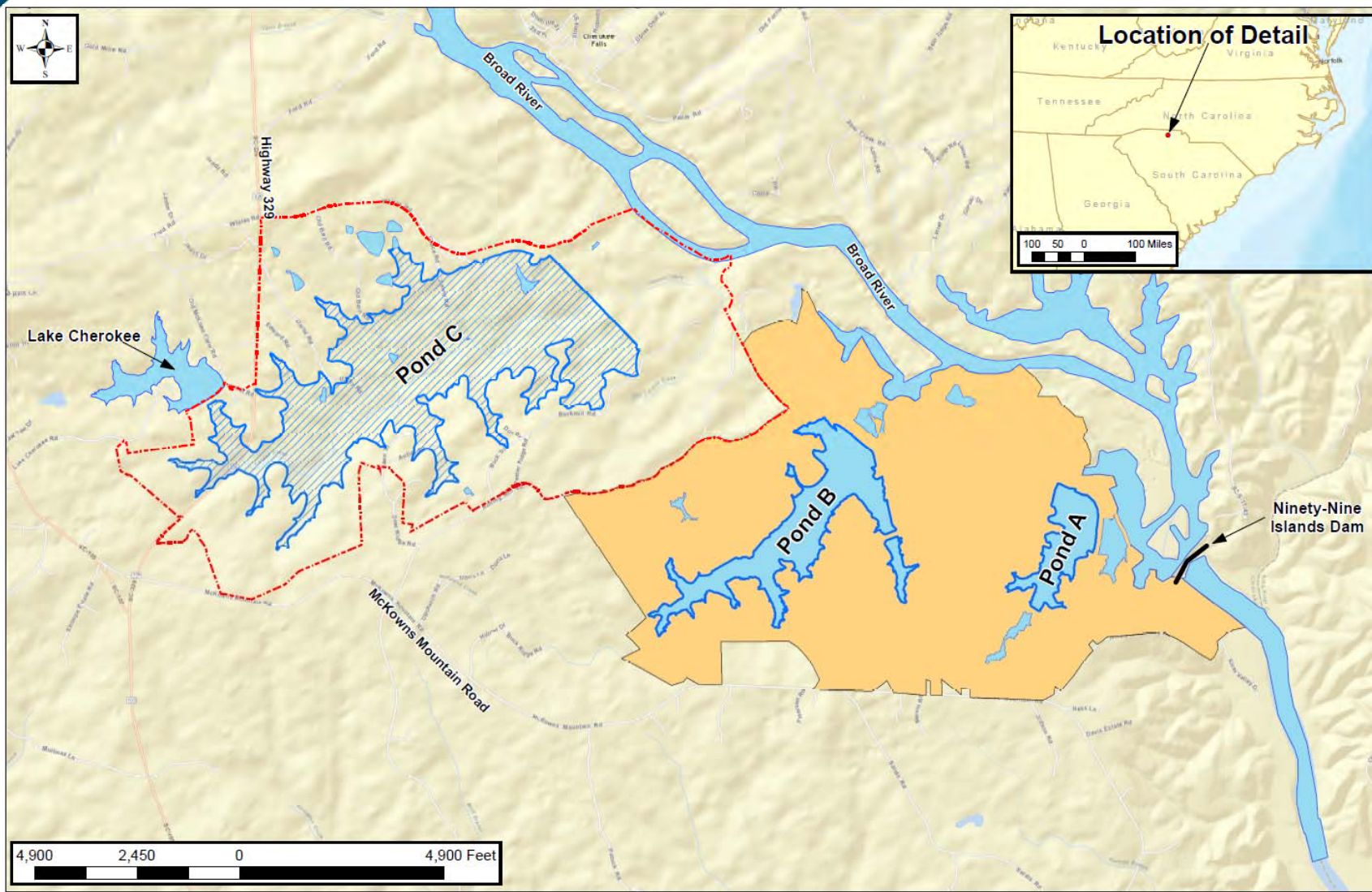
Paul Snead – John Thrasher – Bob Kitchen



Summary of Environmental Review

- Environmental Report (ER) submitted December 2007 and supplemented September 2009
 - Thorough NRC staff audits of ER and alternative site analyses
 - Public outreach
 - Consultations with Federal, Tribal, State and Local Government entities
- FEIS published December 2013
- New & significant information reviews conducted

Lee Nuclear and Make-Up Pond C Sites



Water Management Plan

- Make-Up Pond C
 - Following drought in 2007/2008, Duke Energy planned for an off-site reservoir for supplemental cooling tower make-up water
 - Supplement to ER submitted September 2009
- NPDES Operating Permit
 - SCDHEC issued NPDES Permit July 2013
 - Permit establishes an alternative 316(b) requirement
 - More protective than the 5% proportional mean annual flow (MAF) requirements
 - Provided for 3.8-4.4% MAF withdrawal from Broad River

US Army Corps of Engineers Permitting

- USACE was cooperating agency with NRC in preparation of FEIS
- Compensatory Mitigation Plan developed to support permitting
- Mitigation Plan includes significant stream restoration project with USFS in Sumter National Forest
- 404 Permit issued by the Corps in September 2015 (memorializes Mitigation Plan)

