

Overview of Proposed Approach to Actively Assess External Hazards [Response to SRM-SECY-15-0137]

September 28, 2016

Background

In developing SECY-15-0137, staff considered three options to address NTTF R2.2:

1. Undertake rulemaking
2. Maintain status quo
3. Enhance existing processes to yield proactive approach [recommended/approved approach]

“Staff proposes to leverage and enhance existing NRC processes and programs to ensure that information related to external hazards is proactively and routinely evaluated in a systematic manner.”

Key Messages Regarding Proposed Approach

- Complements existing processes for evaluating new information
 - Proactive
 - Systematic
 - Timely/efficient
 - Predictable
- Leverages existing agency capabilities
 - External hazards center of expertise
 - RES external coordination activities
 - Knowledge base (e.g., info from R2.1 and new reactor reviews)
- Seeks, aggregates, and interprets new information related to external hazards
- Assesses the potential effect of new information on plants and defines issues requiring further action
 - Generic Issues Program
 - Research Activities
 - Hazard-Specific User Needs to RES
 - Long Term Research Program
 - Plant-specific action

Key Elements

Knowledge Base Activities

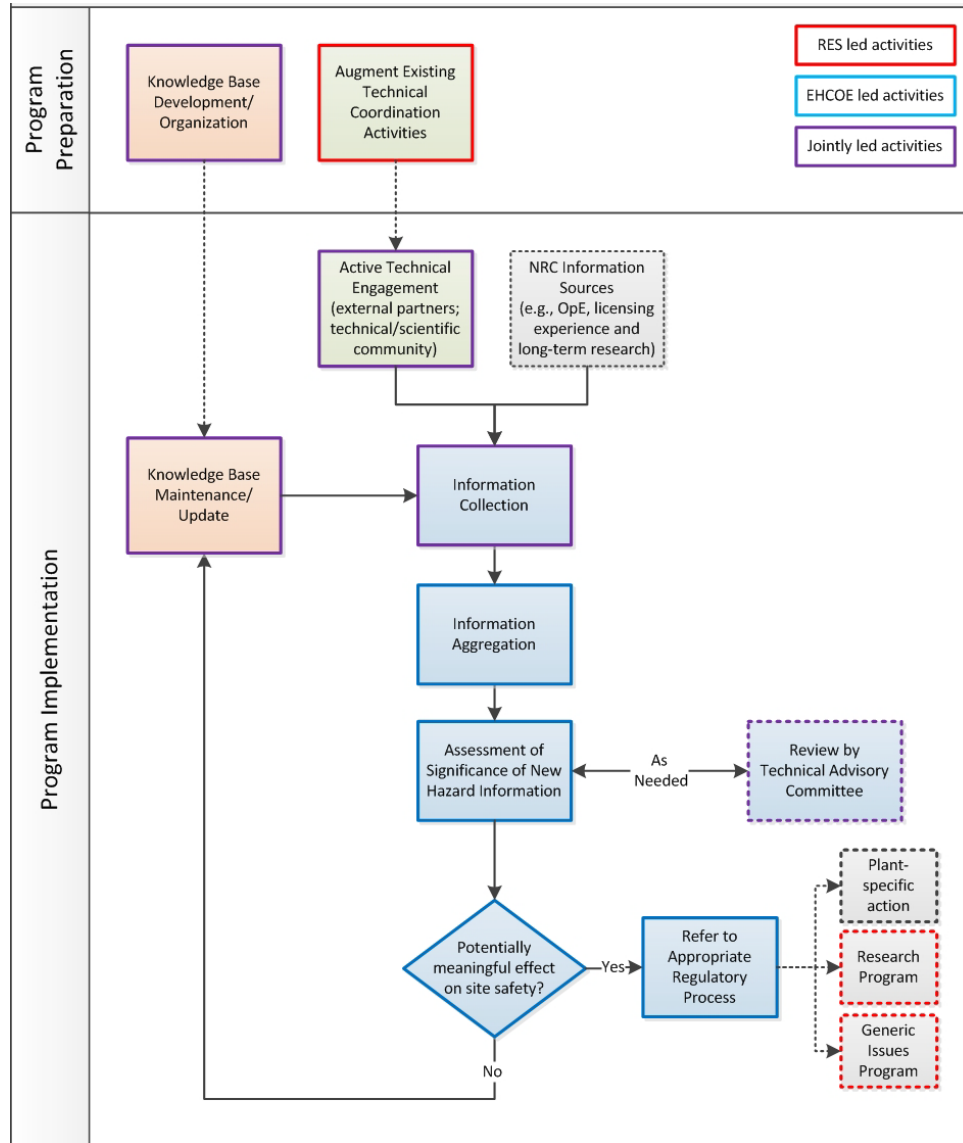
- Compiles and organizes existing info/tools (e.g., from R2.1 and new reactor reviews)
- Incorporates new info/tools (e.g., from R2.2 or other regulatory activities)

Active Technical Engagement and Coordination

- Periodic engagement with external organizations (e.g., federal partners, industry, international counterparts) as well as scientific and technical communities
- RES and COE coordinate to identify key focus areas and reflect in RES Plans

Assessment Activities

- Collects and integrates new information
- Assesses whether new/aggregated information has a meaningful effect on site hazard
- [If needed] Refers the issue and associated analyses to appropriate regulatory process
 - Transfer to program office for action
 - Transfer (well-defined) issue to GI Program
 - Additional study via hazard-specific User Needs to RES



Summary

- **Key Messages**

- Complements existing processes for evaluating new information
- Leverages existing agency capabilities
- Proactive, predictable, and stable process
- Remove unnecessary burden on licensees

- **Current Status**

- Draft of SECY paper is nearing completion
- On track to meet Commission deadline

- **Next steps**

- ACRS meeting (October)
- Issue SECY Paper (December)