

(g) Fuel Cladding at the Hottest Cross Section

Figure 4-35
Temperature Distribution of EOS-TC125 Loaded with EOS-37PTH DSC at
36.35 kW, Load Case # 10
2 Pages

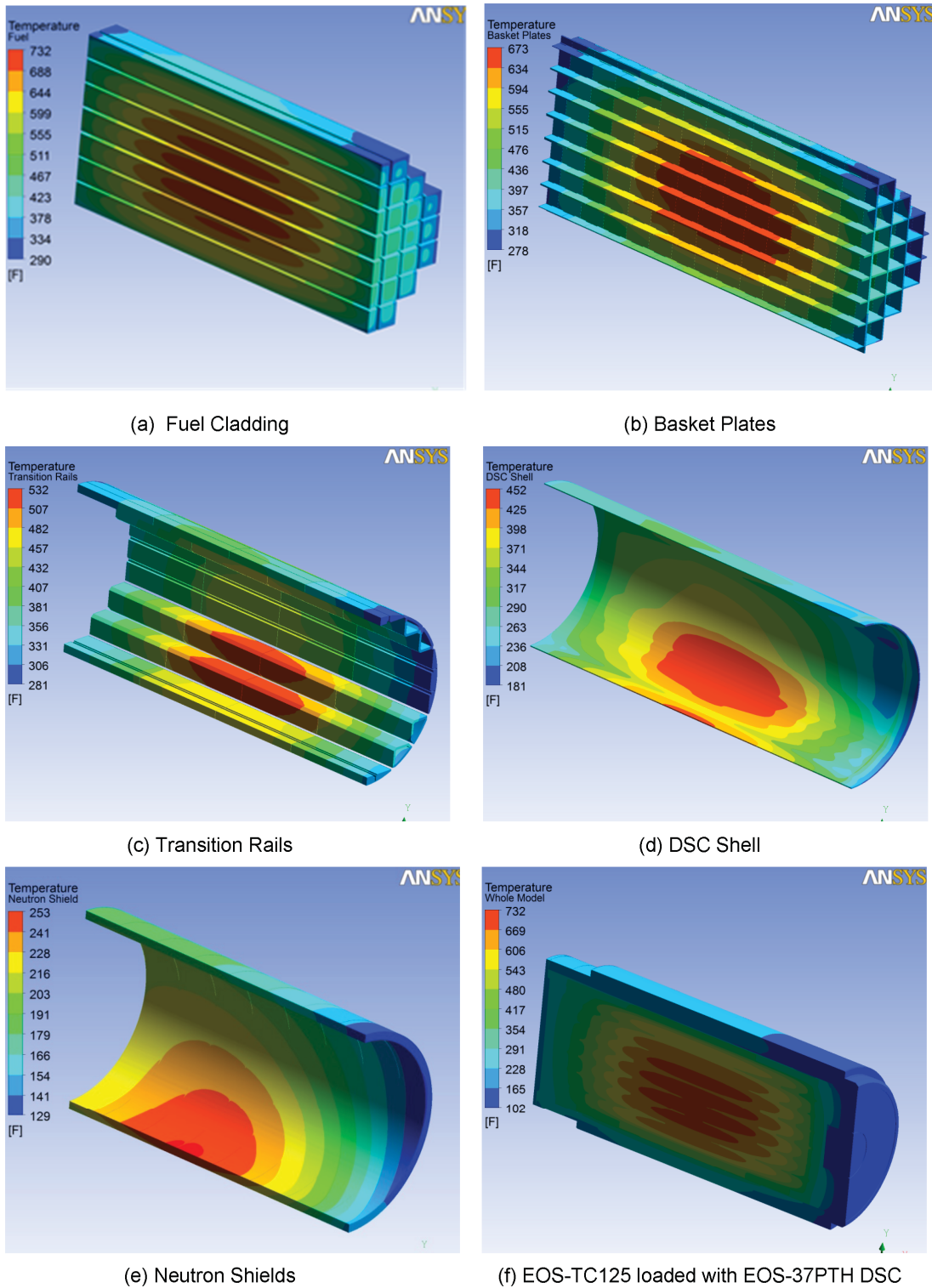
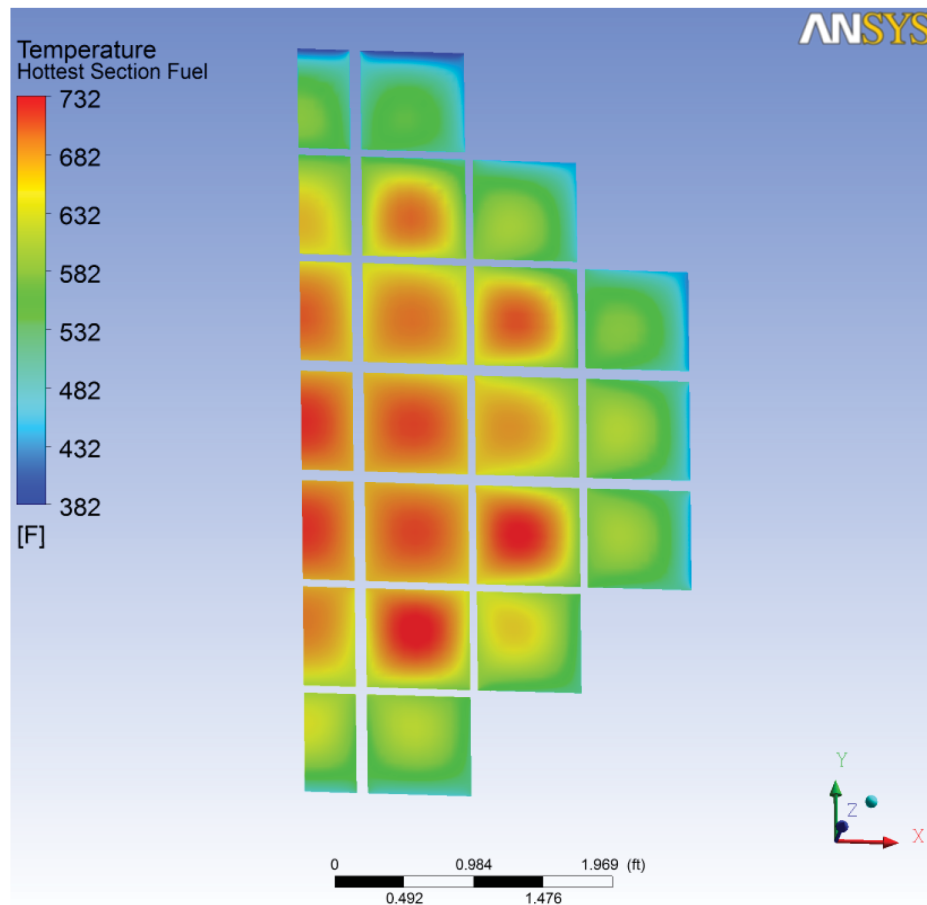


Figure 4-36
Temperature Distribution of EOS-TC125 Loaded with EOS-37PTH DSC at
50 kW, Air Circulation and Load Case # 6a
 2 Pages



(g) Hottest Section in Fuel Cladding

Figure 4-36
Temperature Distribution of EOS-TC125 Loaded with EOS-37PTH DSC at
50 kW, Air Circulation and Load Case # 6a
2 Pages

Proprietary Information on This Page
Withheld Pursuant to 10 CFR 2.390

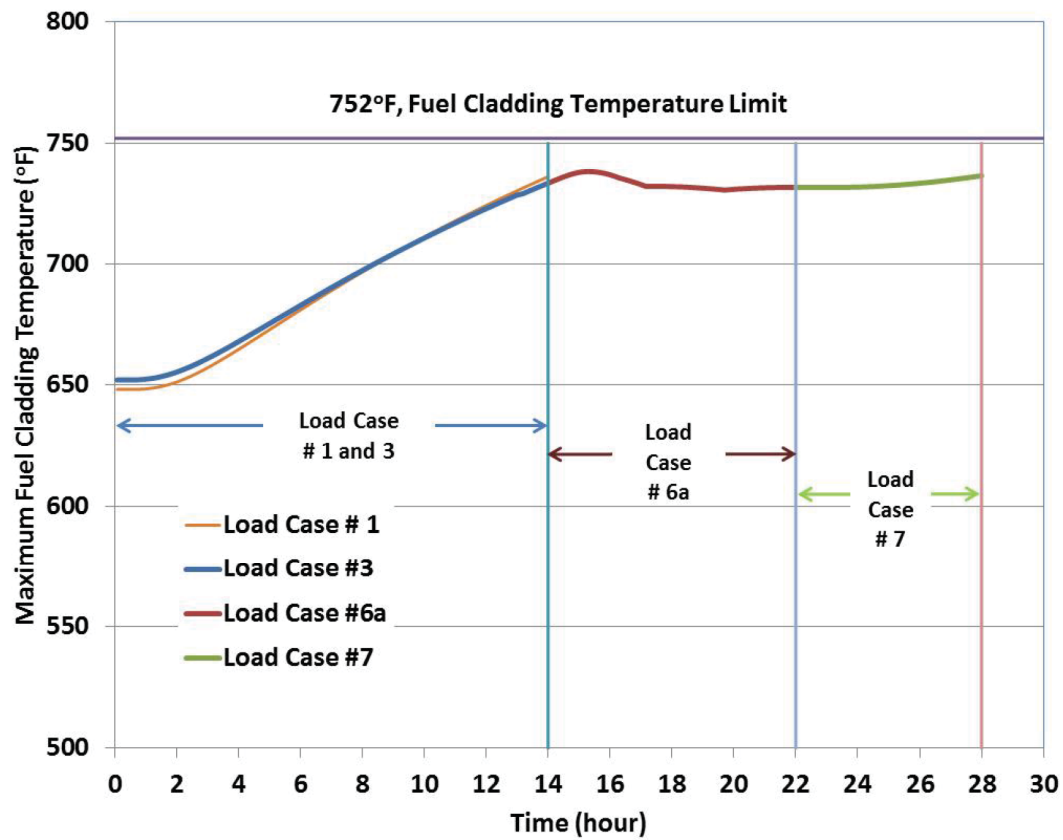


Figure 4-38
Maximum Fuel Cladding Temperature Versus Time in Transient Cases,
Load Cases # 1, 3, 6a, and 7

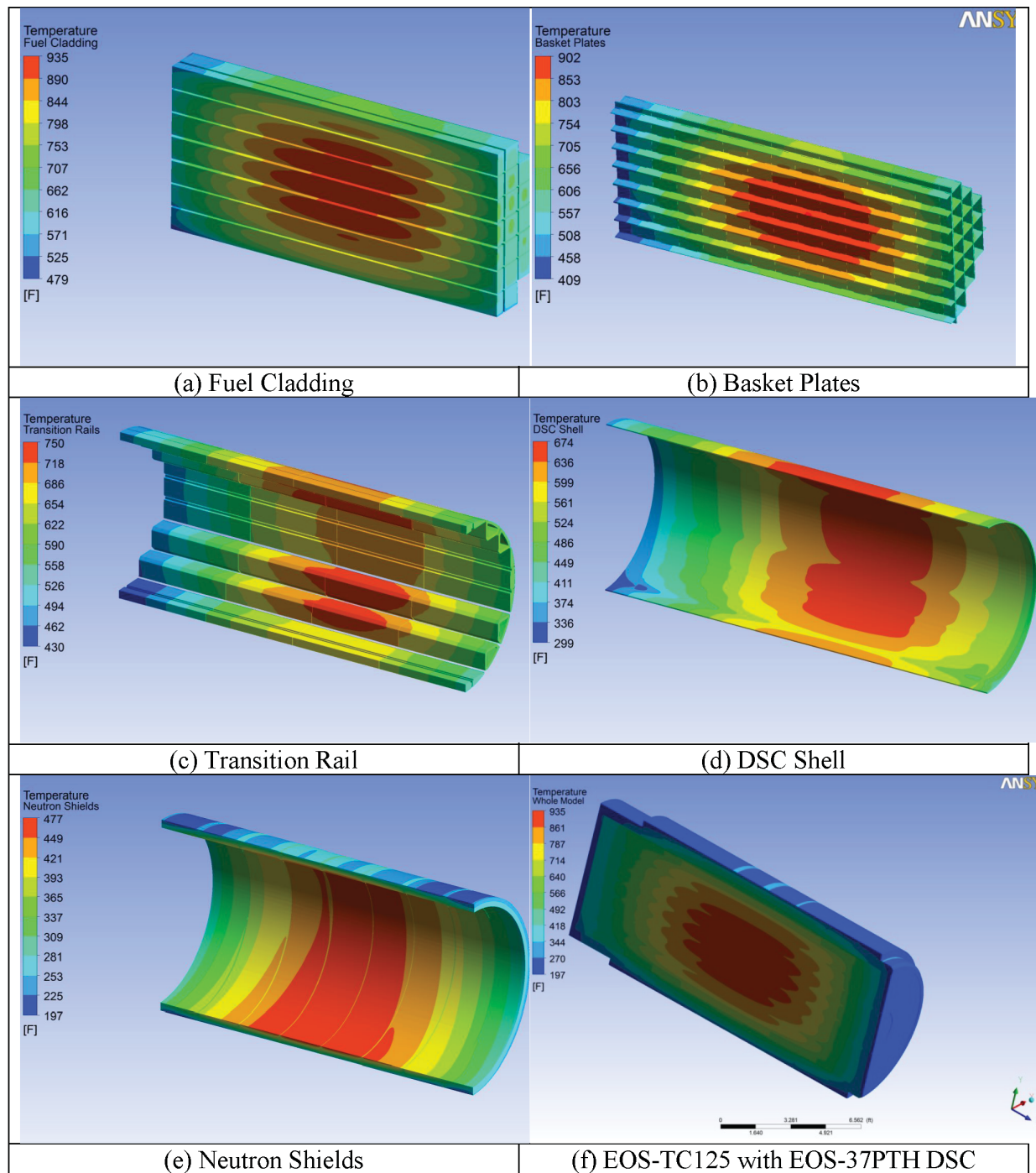
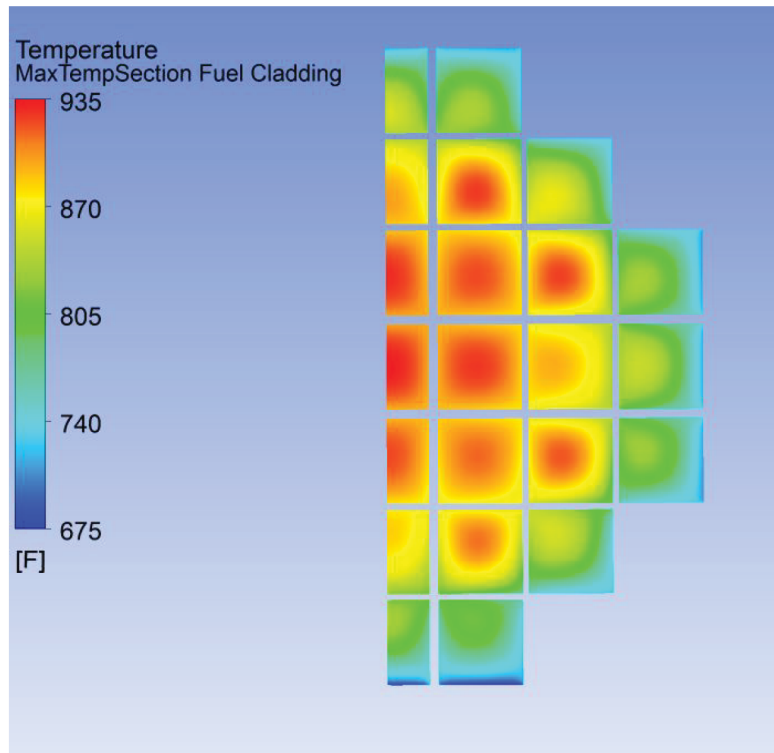


Figure 4-39
Temperature Distribution of EOS-TC125 Loaded with EOS-37PTH DSC at
50 kW, Accident, Loss of Neutron Shield and Load Case # 5
 2 Pages



(g) Fuel Cladding at the Hottest Cross Section

Figure 4-39
Temperature Distribution of EOS-TC125 Loaded with EOS-37PTH DSC at
50 kW, Accident, Loss of Neutron Shield and Load Case # 5
2 Pages

Proprietary Information on This Page
Withheld Pursuant to 10 CFR 2.390

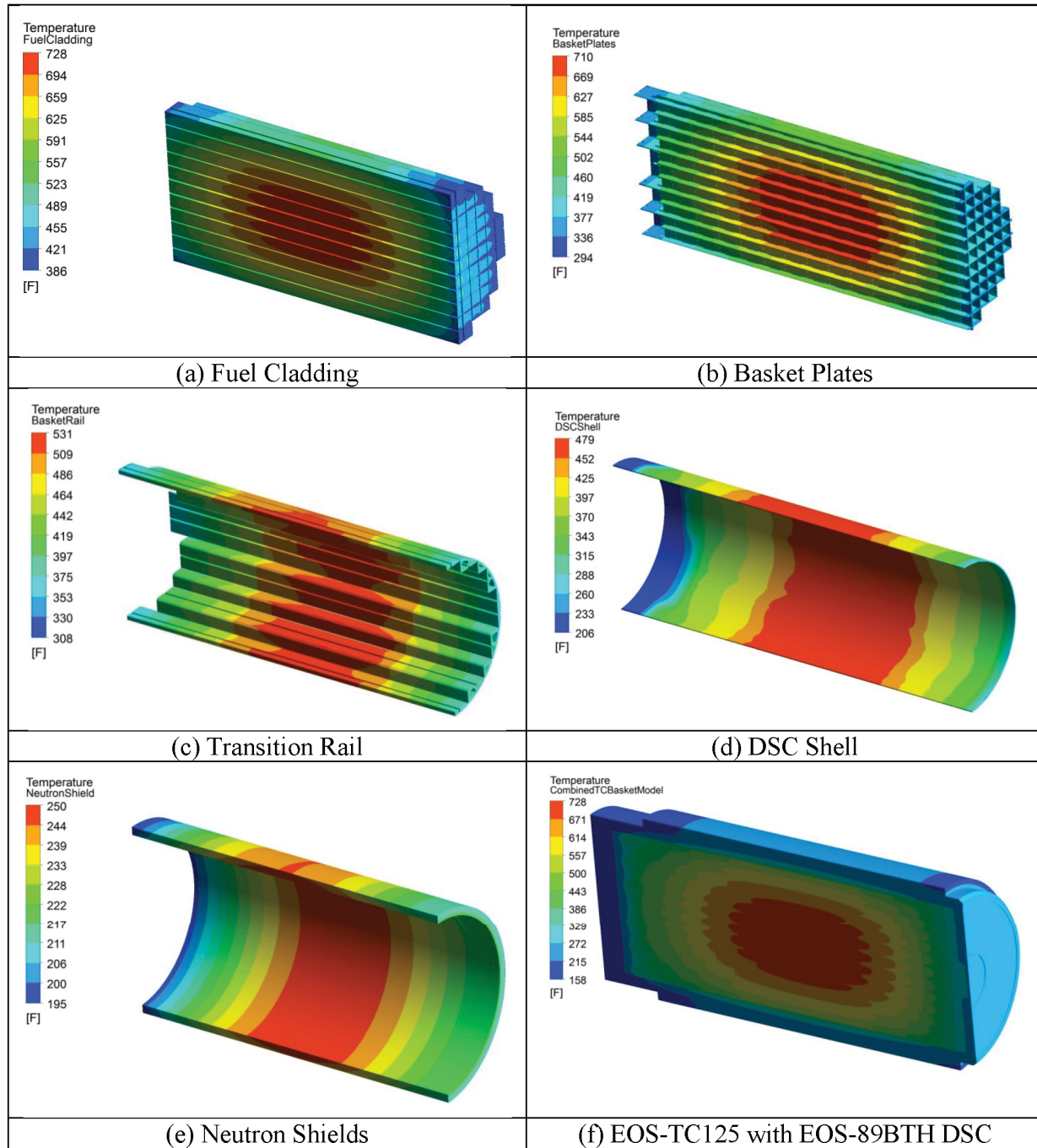


Figure 4-41
Temperature Profiles for EOS-TC125 Loaded with EOS-89BTH DSC at
34.44 kW, Normal Hot Vertical Operations (Load Case #8)
 2 Pages

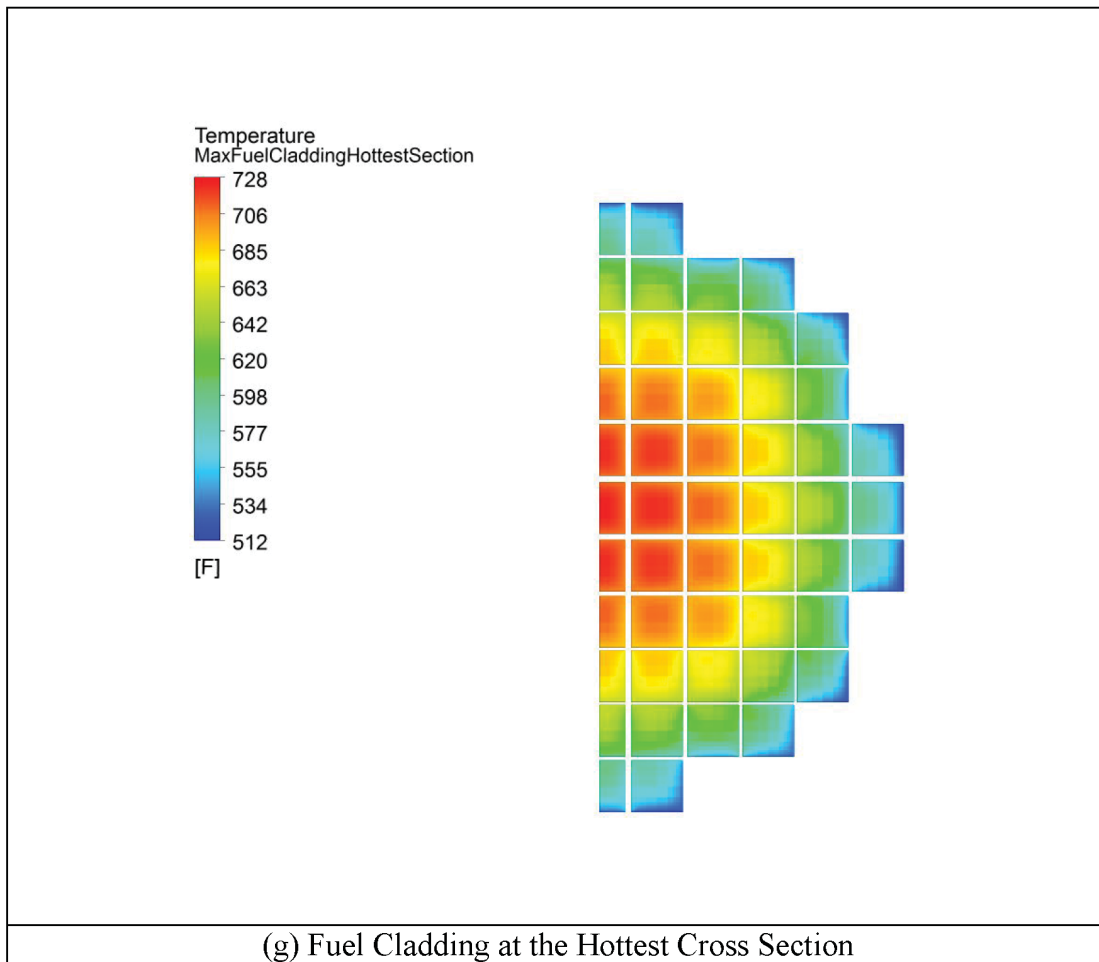


Figure 4-41
Temperature Profiles for EOS-TC125 Loaded with EOS-89BTH DSC at
34.44 kW, Normal Hot Vertical Operations (Load Case #8)
2 Pages

Proprietary Information on Pages 4-210 through 4-213
Withheld Pursuant to 10 CFR 2.390

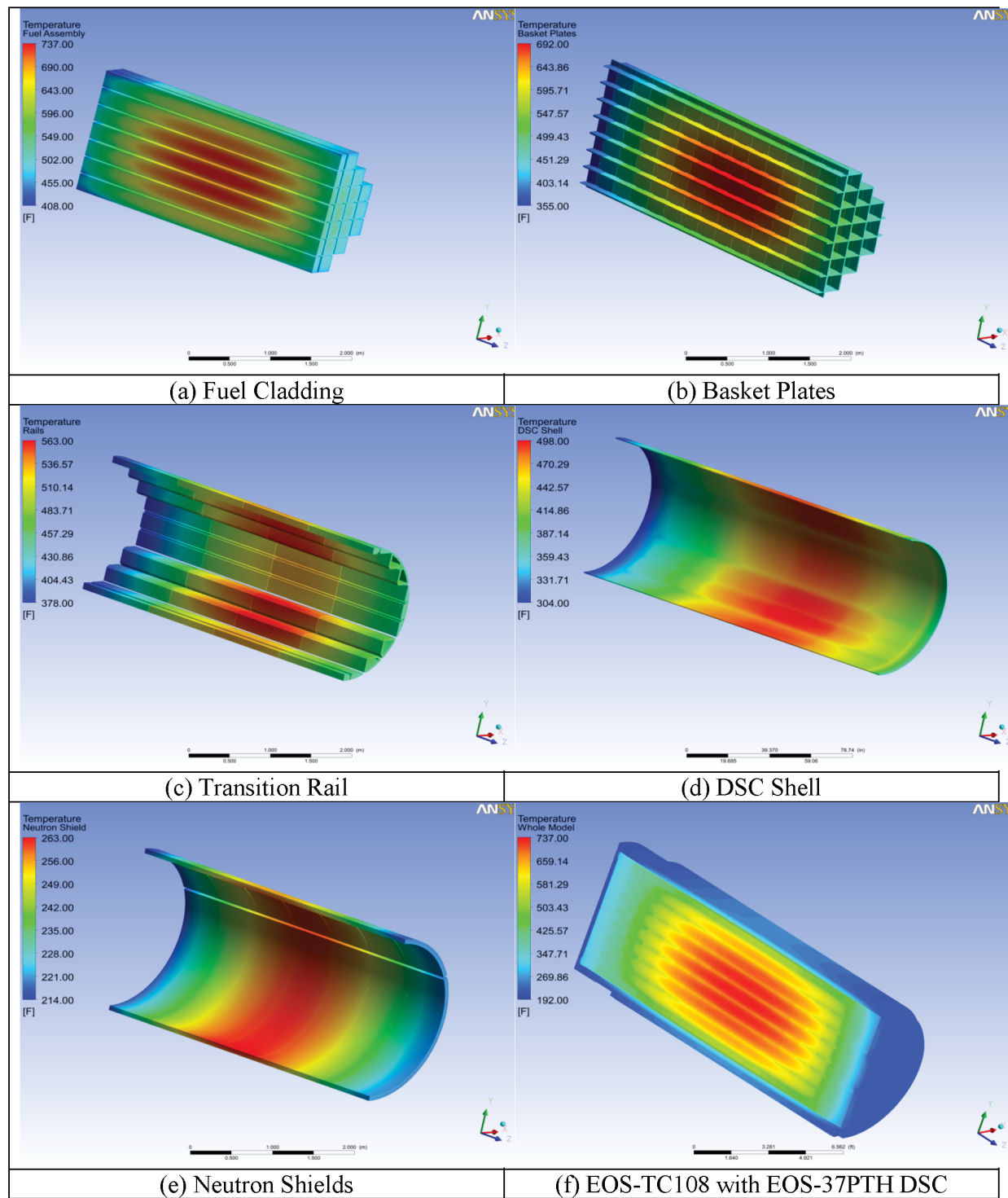


Figure 4-45
Temperature Distributions for EOS-TC108 with EOS-37PTH DSC at 36.35
kW, Load Case #8
 2 Pages

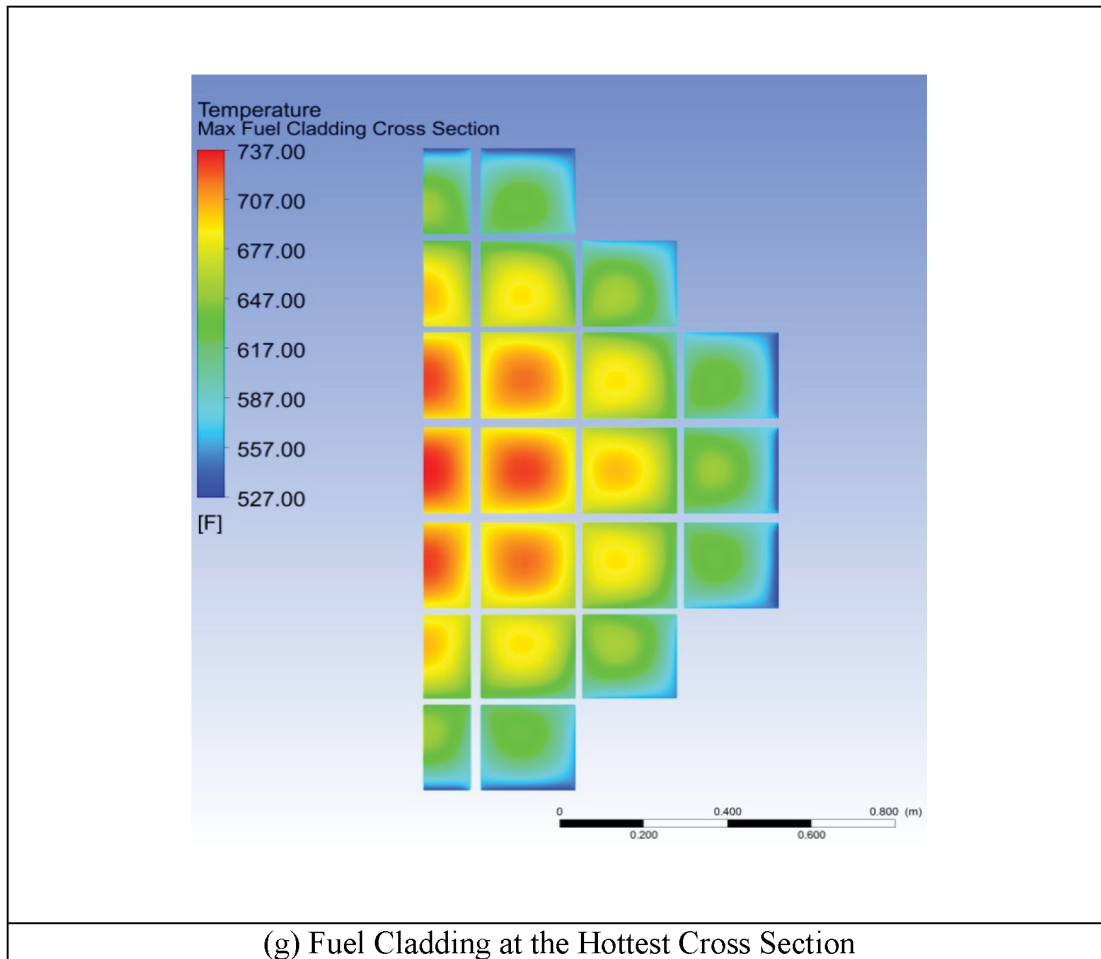


Figure 4-45
Temperature Distributions for EOS-TC108 with EOS-37PTH DSC at 36.35
kW, Load Case #8
2 Pages

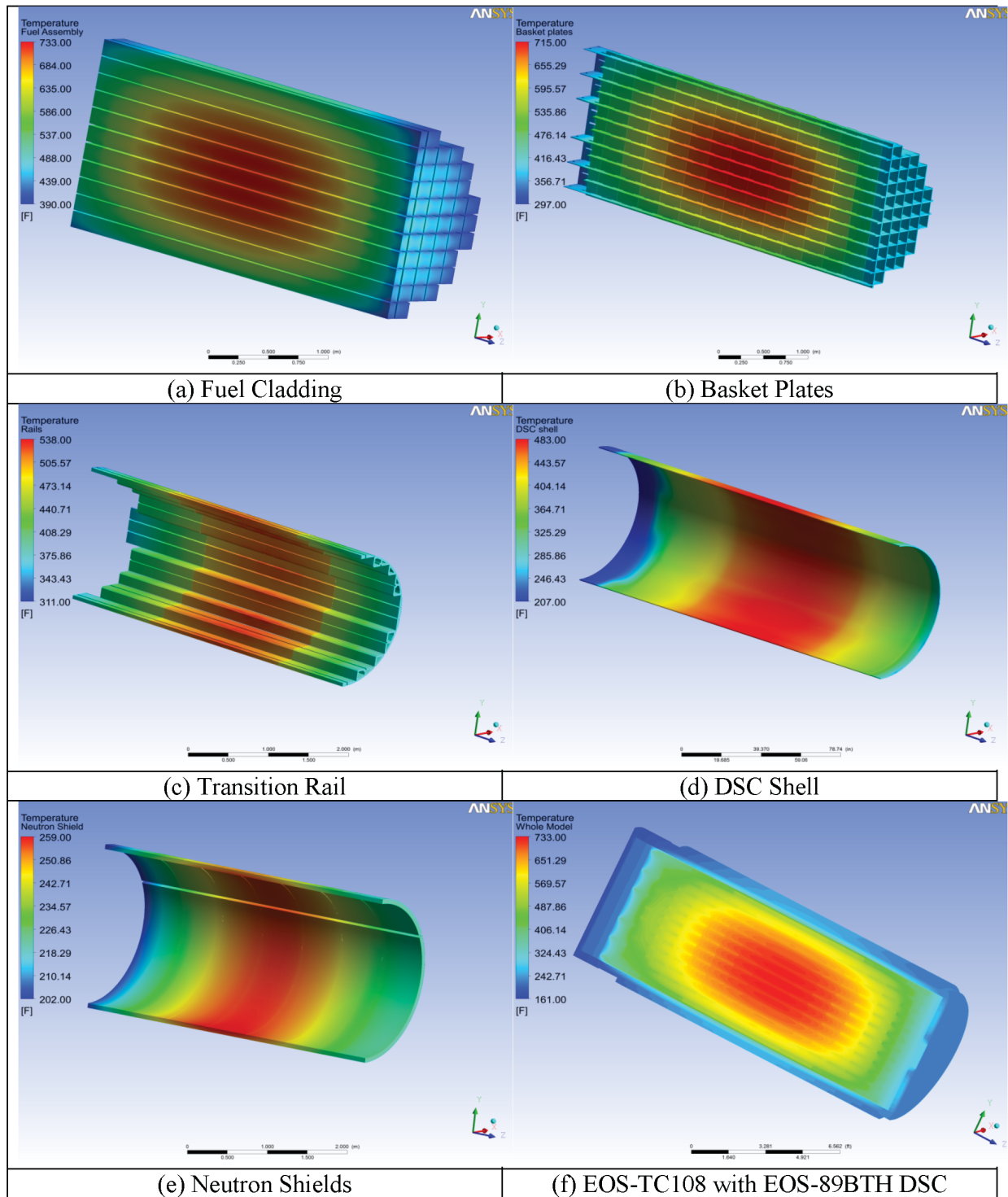
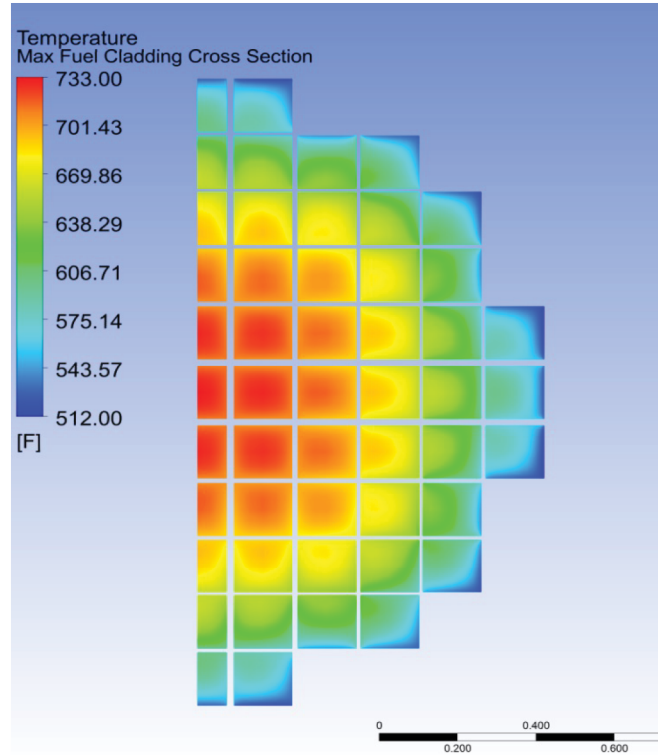


Figure 4-46
Temperature Distributions for EOS-TC108 Loaded with EOS-89BTH DSC
at 34.44 kW, Load Case #8
 2 Pages



(g) Fuel Cladding at the Hottest Cross Section

Figure 4-46
Temperature Distributions for EOS-TC108 Loaded with EOS-89BTH DSC
at 34.44 kW, Load Case #8
2 Pages