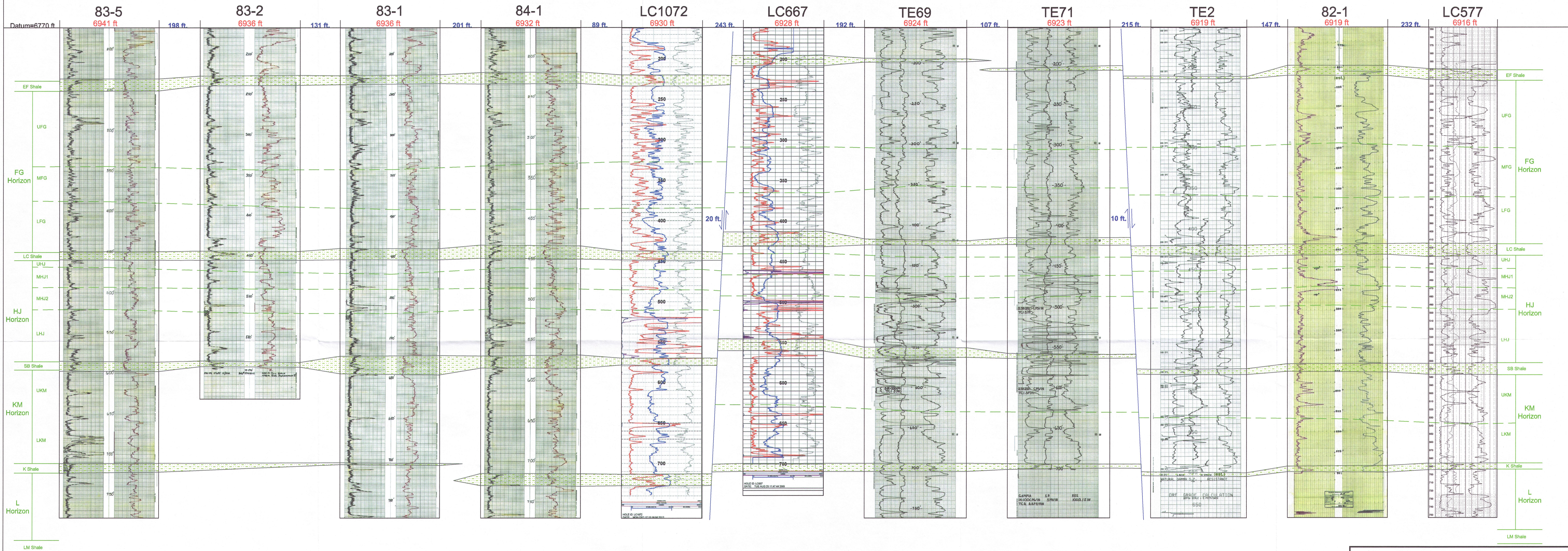



A  
North

A'  
South





Lost Creek ISR, LLC  
Casper, Wyoming USA

D03

---

**Plate MU2 5-3a**

**Lost Creek MU2 Structural Cross Section A-A'**

- Named Shales
- Division for Sand Horizon Sub-Units
- Normal Fault Showing Relative Offset and Throw
- 694 ft Ground Elevation
- 147 ft Spacing btwn drill holes

All logs hung on elevation 6770 ft.  
Top of log not ground level.  
Horizontal scale variable btwn logs.

Issued For: WDEQ-LQD 1.0      Drawn by: Mike Mellin  
Issued/Revised: 05/04/2016  
Drawing No.: WDEQ\_LQD\_PLATE5-3a  
Vertical Scale: 1 inch = 50 feet

