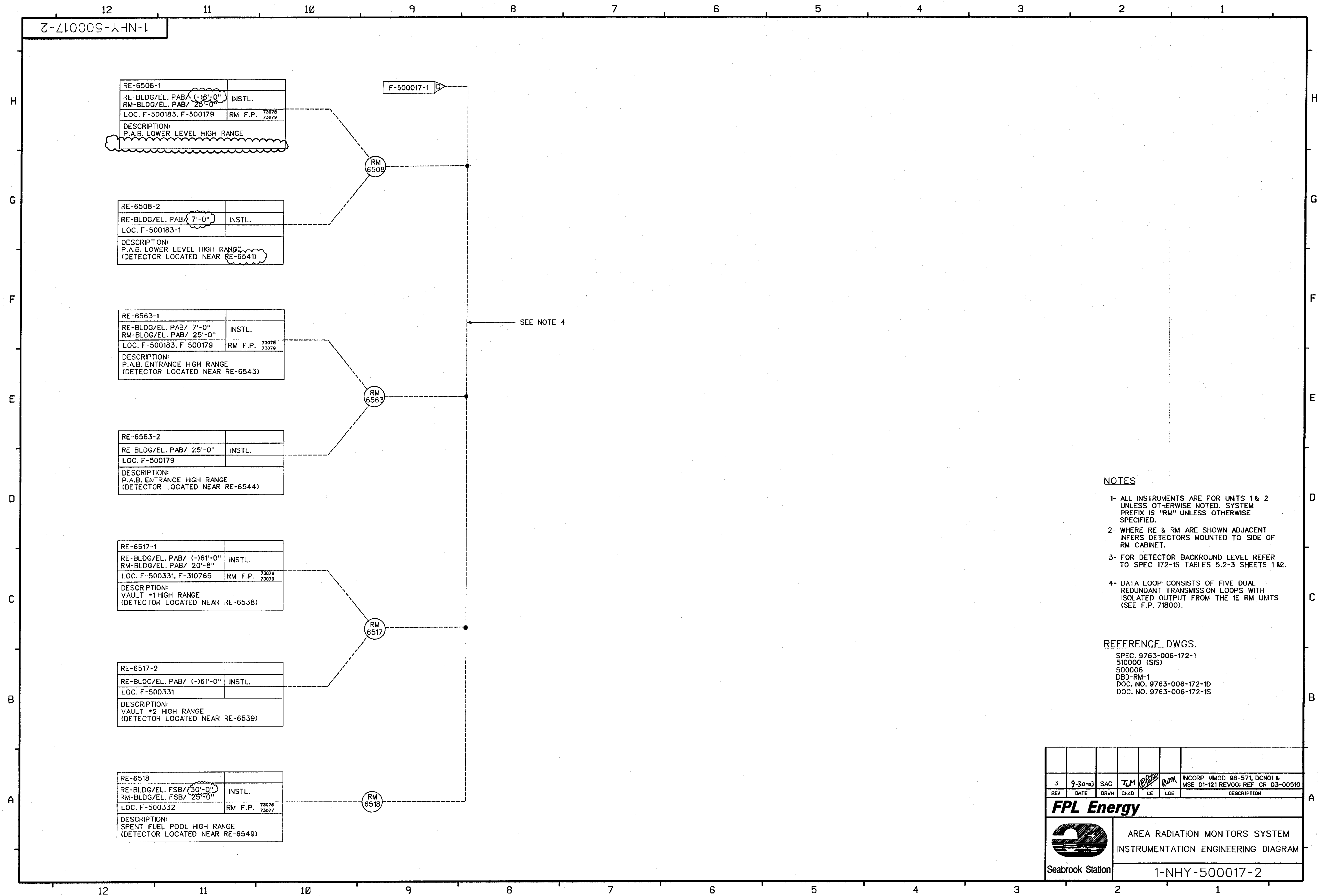
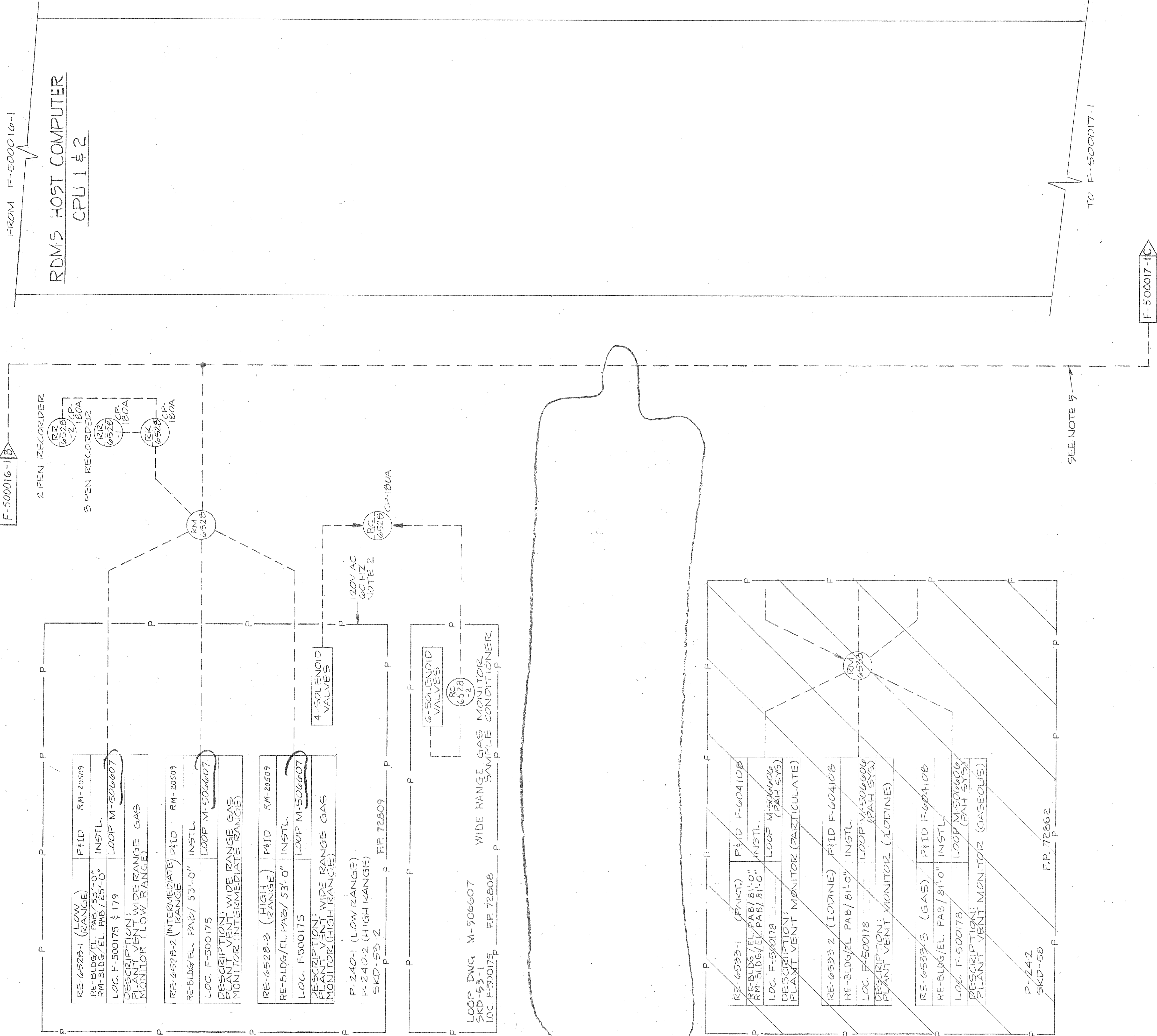


- NOTES:**
1. RM IS AN INTERFACE MODULE WITH A DIGITAL INDICATOR. THESE MODULES PROVIDE THE CAPABILITY FOR SETPOINT OR CONVERSION CONSTANT CHANGES FROM A REMOTE LOCATION. THESE ARE DESIGNATED AS IE ONLY TO ELIMINATE THE NEED FOR ADDITIONAL ISOLATION ELECTRONICS.
 2. ALL INSTRUMENTS ARE FOR UNIT 1. SYSTEM PREFIX IS RM UNLESS OTHERWISE SPECIFIED.
 3. CLASS IE POWER SUPPLIES REQUIRED.
 4. REPEATER STATION WITH INDICATION AND ALARMS.
 5. WHERE RE & RM ARE SHOWN ADJACENT INFERS DETECTORS MOUNTED TO SIDE OF RM CABINET.
 6. FOR DETECTOR BACKGROUND LEVEL REFER TO SPEC 172-15 TABLES 5.2-3 SHEETS 1 & 2.
 7. DATA LOOP CONSISTS OF FIVE DUAL REDUNDANT TRANSMISSION LOOPS WITH ISOLATED OUTPUT FROM THE IE RM UNITS (SEE FP-71800).
 8. NOT USED.
 9. IN ADDITION TO THE CAPABILITIES OF CP-171, CLASS IE SETPOINT CHANGES AND CHECK SOURCE ACTIVATION IS AVAILABLE FROM CP-295.
 10. LOCATED ON CRANE.
 11. ALL FIELD TERMINATIONS FOR RM UNIT ARE MADE IN ADJACENT JUNCTION BOX SUPPLIED BY VENDOR.
 12. PLUG-IN MODULES FOR PORTABLE MONITORS ARE DESIGNATED RX. FOR LOCATIONS REFER TO TABLE 5.2-5, DOC. NO. 9763-006-172-15.
 13. SOUND POWERED PHONE JACKS LOCATED AT THE FOLLOWING LOCATIONS:
RM JUNCTION BOX, RX, HP CONSOLE, IE CAB & RDMS HOST COMPUTER.
 14. NOT SUPPLIED BY RDMS VENDOR.
 15. THE INCANDESCENT LIGHT BULBS HAVE BEEN REMOVED FROM THE YELLOW ALERT AND THE RED HIGH RADIATION LIGHTS FOR THE CLASS IE RADIATION MONITORS, EXCEPT FOR RM-6555 A & B.
- REFERENCE DWGS:**
- SPEC. 9763-006-172-1
 - 512000 (SIS)
 - 500006
 - DBD-RM-1
 - DOC. NO. 9763-006-172-10
 - DOC. NO. 9763-006-172-15
 - F.P. 71339, OUTLINE DWG. FOR RM-CP-180A & B.
 - F.P. 77470, DEM. MANUAL
 - SPEC. ESSI RDMS RM11 COMPUTER VIDEO DISPLAY REPLACEMENT

15	9-30-03	SAC	TLM	CE	LDE	INCORP. OCR 92-016, DCN008; DCR 95-018, DCN009; MPOD 95-571, DCN011; REF CR 03-00510
REV	DATE	DRWN	CHKD	CE	LDE	DESCRIPTION
FPL Energy						Seabrook Station
AREA RADIATION MONITORS SYSTEM INSTRUMENTATION ENGINEERING DIAGRAM						
						1-NHY-500017-1

NUCLEAR SAFETY RELATED





REFERENCE DWG'S.

- SPEC. 9763-006-172-1
M-510000 (SIS)
M-500006 (GEN. INFO. SHEETS)
D&D-RM-1
F.P. 72848 150KINETIC NOZZLE-UNIT 1
F.P. 72849 150KINETIC NOZZLE-UNIT 1
F.P. 72847 150KINETIC NOZZLE-UNIT 2
F.P. 72857 150KINETIC NOZZLE-UNIT 2

NOTES

1. RK IS AN INTERFACE MODULE WITH A DIGITAL INDICATOR. THESE MODULES PROVIDE THE CAPABILITY FOR SETPOINT OR CONVERSION CONSTANT CHANGES FROM A REMOTE LOCATION.

2. CLASS 1E POWER SUPPLIES REQUIRED.
3. ALL INSTRUMENTS ARE FOR UNITS 1&2 UNLESS OTHERWISE NOTED. SYSTEM PREFIX IS "RM" UNLESS OTHERWISE SPECIFIED.

4. FOR DETECTOR BACKGROUND RADIATION MONITORING SPEC 172-15 TABLE 52.4 A & B.
5. DATA LOOP CONSISTS OF FIVE DUAL REDUNDANT TRANSMISSION LOOPS WITH ISOLATED OUTPUT FROM THE 1E RM UNITS (SEE F.P.71800).
6. ALL FIELD TERMINATIONS FOR RM UNIT ARE MADE IN ADJACENT JUNCTION BOX SUPPLIED BY VENDOR.

ISSUED FOR CONSTRUCTION

AIRBORNE RADIATION
MONITORING SYSTEM
INSTRUMENTATION ENGINEERING DIAGRAM

North Atlantic
Energy Service Corporation
Seabrook
Station

1-NHY-500016-2

1

REVISION	DATE	DESCRIPTION	BY	CHKD	DATE	DESCRIPTION	BY	CHKD
1	12/14/88	ISSUED FOR CONSTRUCTION	WMP	WMP	12/14/88	ISSUED FOR CONSTRUCTION	WMP	WMP
2	12/14/88	REVISION 1	WMP	WMP	12/14/88	REVISION 1	WMP	WMP
3	12/14/88	REVISION 2	WMP	WMP	12/14/88	REVISION 2	WMP	WMP
4	12/14/88	REVISION 3	WMP	WMP	12/14/88	REVISION 3	WMP	WMP

REVISION	DATE	DESCRIPTION	BY	CHKD	DATE	DESCRIPTION	BY	CHKD
1	12/14/88	ISSUED FOR CONSTRUCTION	WMP	WMP	12/14/88	ISSUED FOR CONSTRUCTION	WMP	WMP
2	12/14/88	REVISION 1	WMP	WMP	12/14/88	REVISION 1	WMP	WMP
3	12/14/88	REVISION 2	WMP	WMP	12/14/88	REVISION 2	WMP	WMP
4	12/14/88	REVISION 3	WMP	WMP	12/14/88	REVISION 3	WMP	WMP

2

3

4