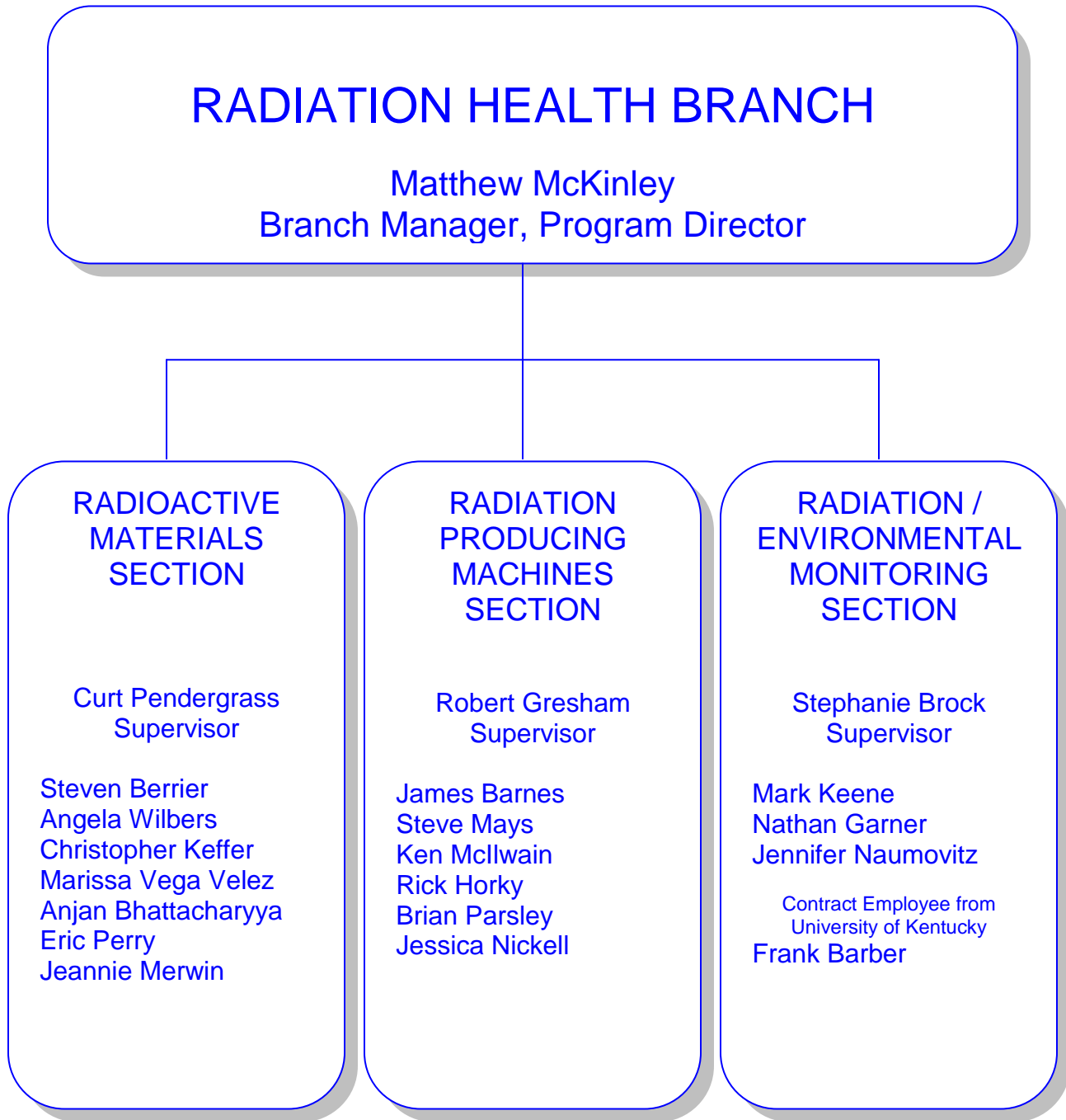
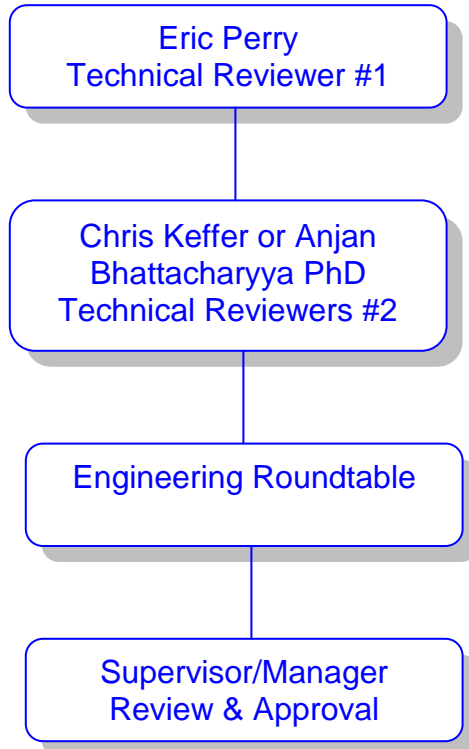


(b) A chart showing positions of current radiation control program including management; and

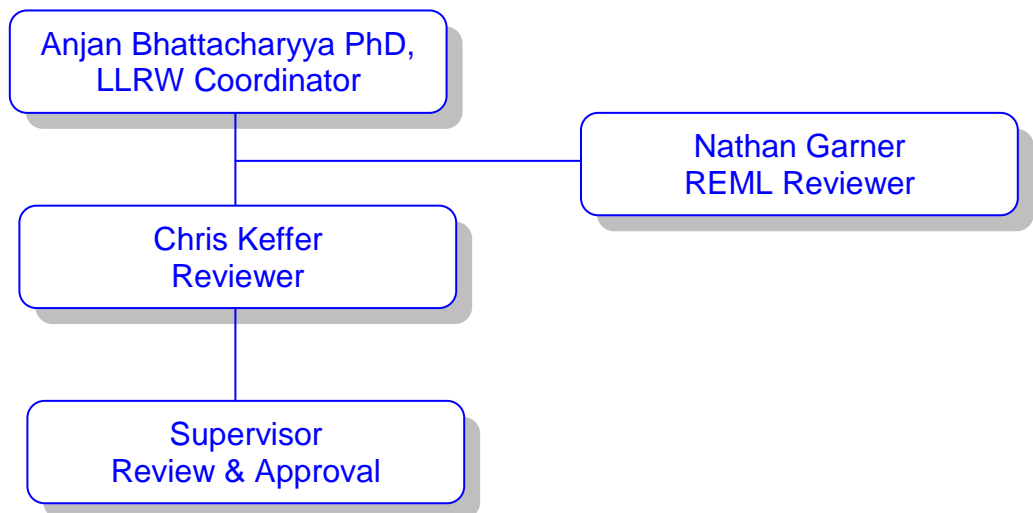


- (c) Equivalent charts for sealed source and device evaluation, low-level radioactive waste and uranium recovery programs, if applicable.

SS&D evaluation is conducted in accordance with the Radioactive Materials Section (RMS) "Policy for the Review of an Application for a Sealed Source and Device Certificate" which calls for two technical reviews by qualified staff followed by an "Engineering Roundtable" and final Supervisor/Manager approval.



The low level radioactive waste program is led by the LLRW Coordinator with review by qualified staff together with input from the Radiation Environmental Monitoring Laboratory (REML).



Kentucky does not have a uranium recovery program.