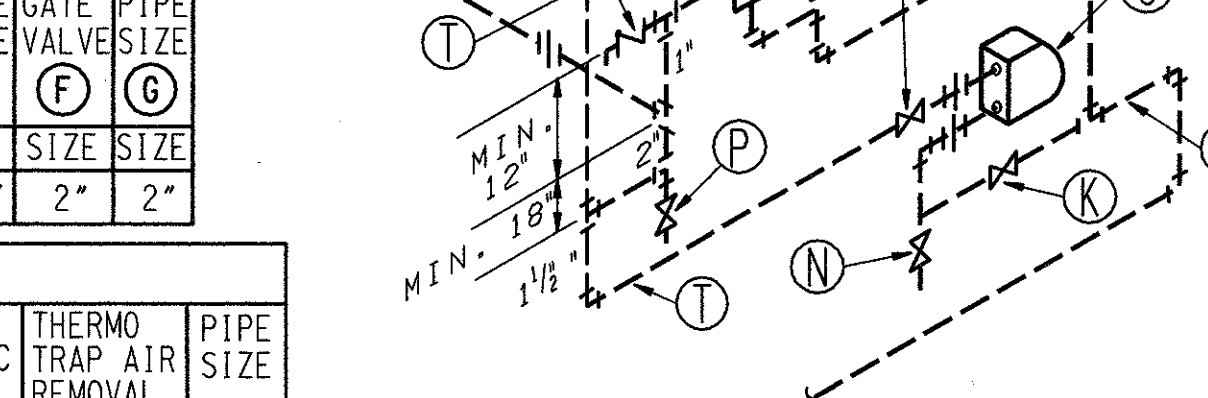


- NOTES**
- ALL DUCTWORK TO BE IN ACCORDANCE WITH STANDARD ENGRG SPEC SH1A & SHALL BE EITHER 16 GA BLACK IRON OPEN HEARTH LOW CARBON STEEL COMPARABLE TO SAE1020 FABRICATED IN SECTIONS ABOUT 10' LONG WITH FLANGED JOINTS AS PER ENGRG STD H23J OR 16 GA GALV IRON WITH LAP JOINTS & RIVETING & UNPROTECTED EDGES PAINTED USING COATING SYSTEM NO. 9 OF DUPONT SPEC 323D.
 - BLACK IRON DUCTWORK TO BE PAINTED INSIDE & OUTSIDE IN ACCORDANCE WITH DUPONT SPEC 3206 PAGES 18 & 19 SECTION 1.2B FOR TANK EXTERIOR.
 - FAN WHEEL & CASING, INSIDE & OUT SHALL BE CLEANED AND PAINTED IN ACCORDANCE WITH DUPONT SPEC 3019, SECTION BR5.
 - EXPOSED PORTION OF FAN SHAFT TO BE CLEANED & WRAPPED WITH VARNISHED CAMBRIC.
 - DRIVE GUARD TO BE AS PER ENGRG STD H2N.
 - ALL FAN AND MOTOR BEARINGS TO BE PROVIDED WITH 'GITS' OILERS.
 - CASING BETWEEN HEATING COILS & FAN, COILS, FAN, & DUCTWORK BETWEEN FAN & CONCRETE TO BE COVERED WITH 1 1/2\"/>
 - ALL PIPING SHALL BE FABRICATED & INSTALLED IN ACCORDANCE WITH DUPONT SPEC 3018.
 - CONTROL VALVE PROVIDED BY WILMINGTON DESIGN.
 - RUNOUT TO HEATING COILS SHALL BE TAKEN OFF TOP OF STEAM MAIN.
 - BLOW-OFF VALVES & TEST CONNECTIONS TO BE SO LOCATED OR THEIR DISCHARGE SO PIPED AS TO ELIMINATE POSSIBILITY OF INJURY TO PERSONNEL OR DAMAGE TO MATERIAL.
 - 15# STEAM LINE INSULATION TO BE STD THICKNESS CODE NIA FINISH 'F'.
 - CONDENSATE RETURN LINE TO BE INSULATED WITH STD THK NIA FINISH 'F' BELOW EL 6'-6\"/>
 - ALL VALVES SHALL CONFORM WITH VALVE CODE, ENG STD PIV FINISH AS FOLLOWS:
UP TO AND INCL 2\"/>
 - ALL PIPING TO SLOPE IN DIRECTION OF ARROWS APPROX 1\"/>
 - CHECK VALVE 'R' (INSTALLED IN REVERSE POSITION) FOR USE AS VACUUM BREAKER TO PREVENT COIL FREEZE-UP.
 - BLANK OFF OPENINGS BELOW COILS & FILTERS WITH SHEET METAL.

THIS DRAWING IS A SCANNED CAD PLOT
 REVISION REQUIRES PROPER RASTER/VECTOR SOFTWARE.
 CONTACT WAME DRAFTING DEPARTMENT FOR FURTHER INFORMATION.
 DO NOT REVISE THIS PLOTTED COPY.

THIS DOCUMENT CONTAINS INFORMATION RELATING TO ACTIVITIES OF THE U.S. DEPARTMENT OF ENERGY. NOT TO BE REPRODUCED OR RELEASED WITHOUT PRIOR APPROVAL.



STEAM

CONTROL VALVE	GATE VALVE	STRAINER	GATE VALVE	GLOBE VALVE	GATE VALVE	PIPE
(A)	(B)	(C)	(D)	(E)	(F)	(G)
SIZE	SIZE	SIZE	SIZE	SIZE	SIZE	SIZE
1 1/4"	500	1 1/4"	2"	2"	1 1/2"	2"

CONDENSATE

TRAP	GATE VALVE	STRAINER	GATE VALVE	REV CH VALVE	THERMO TRAP	PIPE
(J) OR EQUAL	(K)	(L)	(M)	(N)	(O)	(P)
SIZE	SIZE	SIZE	SIZE	SIZE	SIZE	SIZE
1 1/2"	1500	SARCO FTP-1	1 1/2"	3/4"	3/4"	1 1/2"

E & PD DRAWING NO. M MD H 7643 26
 REVISION

PROJ. NO.	REV. NO.	DATE	REVISION	PRP'D	CHK'D	DEM	MPE	PROJ. NO.	REV. NO.	DATE	REVISION	PRP'D	CHK'D	DEM	MPE
9999	26	1-24-00	INCORP. G-DCF-G-00092. (GPC) SEE MICROFILM FOR PREVIOUS REVISIONS CONFIG CONTROL (DEM IS CG ENGR, MPE IS CG ENGR MGR). DM-SW-DM												
AYD21	25	07-28-93	ADDED NOTE FOR TEMP GAGE. INCORP M-DCP-H-92091. ISSUE FOR												

UNITED STATES DEPARTMENT OF ENERGY
 SAVANNAH RIVER SITE

STANDARDS	REFERENCE DRAWINGS	PROJECT	SCALE	DATE
H 16 J H 1 K H 2 N B G H S W I M 2 3 J	W163012 W163018 S5-2-4990 W702402	8990, 951749	1/4" = 1'-0"	8-12-55 8-12-55 8-15-55

THIS DRAWING HAS BEEN FURNISHED BY THE SAVANNAH RIVER SITE. THE INFORMATION AND KNOW-HOW THEREON MAY NOT BE USED NOR THE DRAWING REPRODUCED WITHOUT THE WRITTEN PERMISSION OF DU PONT. ALL REPRODUCTIONS IN WHOLE OR IN PART, INCLUDING VENDOR'S SHOP DRAWINGS, SHALL BEAR OR REFER TO THIS STAMP.

ENGINEERING DEPARTMENT
 W163389