

## NPEmails, IPRenewal

---

**From:** Paul <[pdblanch@comcast.net](mailto:pdblanch@comcast.net)>  
**Sent:** Wednesday, June 08, 2016 12:24 PM  
**To:** Lew, David; Dentel, Glenn; Dorman, Dan; Haagensen, Brian; Trapp, James  
**Cc:** [sgalef@aol.com](mailto:sgalef@aol.com); Paul Gallay; Amy Rosmarin; Susan Van Dolsen; Andrew Bast; Roger Witherspoon; marilyn elie; DR WILLIAM CORCORAN; Aaron Cantu; Sam Thielman; Nancy Cutler; Sheehan, Neil; Pickett, Douglas; Dorman, Dan; Trapp, James; Burritt, Arthur; Dacimo; Jk Canepa; Ellen Weininger; Ellen Cantarow; Alison Rose Levy; Sandra Galef; Ellen Cantarow; John Sullivan; Kathryn Miles; Elizabeth Browning Studio; Elijah Shaheen; [vaughey@aol.com](mailto:vaughey@aol.com)  
**Subject:** [External\_Sender] UCS bolt assessment of operability  
**Attachments:** 20151203-nrc-manual-chapter-0326--operability-determinations.pdf; ATT00001.htm

**From:** Dave Lochbaum <[DLochbaum@ucsusa.org](mailto:DLochbaum@ucsusa.org)>  
**Date:** June 8, 2016 at 11:32:41 AM EDT  
**To:** "Blanch, Paul" <[pdblanch@comcast.net](mailto:pdblanch@comcast.net)>  
**Subject:** Indian Point Unit 3

Hello Paul:

I've had a chance to read Entergy's licensee event report on the degraded baffle bolts on Unit 2 as well as NRC Inspection Manual Chapter 0326 (attached and hereafter referred to as MC 0326). Entergy described the LER as covering "Unanalyzed Condition due to Degraded Reactor Baffle-Former Bolts" (cover page).

Entergy stated that the degraded baffle bolts did not meet the acceptable criteria in WCAP-18048-P to allow Unit 2 to restart - "The consequence of this is that baffle-former bolt replacements were required to be completed prior to returning IP2 back to service" (page 2, middle paragraphs).

Entergy stated that "The root cause of the baffle-former bolt failures is primarily Irradiation Assisted Stress Corrosion Cracking..." (page 3) and that "Failure of a critical number of bolts in a localized area subsequently increased loading on adjacent bolts thus increasing the probability of failure of the adjacent bolts and generating the clustered pattern seen in the inspection results" (page 3).

Entergy committed to "Perform inspection of the baffle-former bolts in refueling outage 2R23" (page 4). MRP-227-A only requires re-inspections every 10 years (every fifth refueling outage), so Entergy is inspecting the Unit 2 bolts on an accelerated schedule due to the extent of the degradation.

MC 0326 Section 04.05 states that "Circumstances that require an operability determination: a. Degraded conditions. b. Nonconforming conditions. c. Discovery of an unanalyzed condition." As noted above, Entergy's LER reported that an unanalyzed condition had been discovered; namely, the degraded condition of the baffle bolts which was nonconforming to the acceptance criteria in WCAP-18048-P. Any one factor would require an Operability Determination -- having all three present just makes the right call easier.

MC 0326 Section 04.04 defines the scope of operability determinations. That scope should include "The SSCs (systems, structures, and components) affected by the degraded or nonconforming condition" and "The extent of condition for all similarly affected SSCs." Based on past practice, these criteria mean that, for example, a degraded condition found on a 2-inch valve must be assumed to affect 1-inch, 3-inch, and other sized valves if the cause of the degradation is unrelated to the 2-inch size. Similarly then, the degraded condition on Unit 2 SSCs should invoke an Operability Determination evaluating this potential degraded condition on Unit 3's SSCs.

MC 0326 Section 04.03 outlines the Presumption of Operability. It's akin to the presumption of innocence in trials. The first full paragraph on page 7 explains the limitations on the Presumption of Operability - "...it would not be appropriate to presume operability based on the future results of an analysis where there is not a reasonable expectation that the system can perform its specified safety function during the interim." Entergy's report indicated that Unit 2 could not be safely restarted until the degraded bolts were replaced. Until it is established that Unit 3's bolts are not degraded (either by an Operability Determination or by shut down to inspect the bolts), there's not a reasonable expectation that the core former's safety function can be performed. Entergy's LER and NRC's MC 0326 provide me the documentation I needed to contend that Unit 3 should either be shut down for baffle bolt inspections or have its continued operation sans inspections justified by a formal Operability Determination reviewed by the NRC.

Thanks,

Dave Lochbaum

UCS

**Hearing Identifier:** IndianPointUnits2and3NonPublic\_EX  
**Email Number:** 7072

**Mail Envelope Properties** (DA5AEF27-19C8-4516-A6D2-CFEB5D68B215)

**Subject:** [External\_Sender] UCS bolt assessment of operability  
**Sent Date:** 6/8/2016 12:24:19 PM  
**Received Date:** 6/8/2016 12:24:27 PM  
**From:** Paul

**Created By:** pmb Blanch@comcast.net

**Recipients:**

"sgalef@aol.com" <sgalef@aol.com>  
Tracking Status: None  
"Paul Gallay" <pgallay@riverkeeper.org>  
Tracking Status: None  
"Amy Rosmarin" <amyrosmarin@aol.com>  
Tracking Status: None  
"Susan Van Dolsen" <svandolsen@gmail.com>  
Tracking Status: None  
"Andrew Bast" <basta@cbsnews.com>  
Tracking Status: None  
"Roger Witherspoon" <roger6t6@gmail.com>  
Tracking Status: None  
"marilyn elie" <eliewestcan@gmail.com>  
Tracking Status: None  
"DR WILLIAM CORCORAN" <william.r.corcoran@1959.usna.com>  
Tracking Status: None  
"Aaron Cantu" <aaronmichaelcantu@gmail.com>  
Tracking Status: None  
"Sam Thielman" <sam.thielman@theguardian.com>  
Tracking Status: None  
"Nancy Cutler" <NCUTLER@lohud.com>  
Tracking Status: None  
"Sheehan, Neil" <Neil.Sheehan@nrc.gov>  
Tracking Status: None  
"Pickett, Douglas" <Douglas.Pickett@nrc.gov>  
Tracking Status: None  
"Dorman, Dan" <Dan.Dorman@nrc.gov>  
Tracking Status: None  
"Trapp, James" <James.Trapp@nrc.gov>  
Tracking Status: None  
"Burritt, Arthur" <Arthur.Burritt@nrc.gov>  
Tracking Status: None  
"Dacimo" <fdacimo@entergy.com>  
Tracking Status: None  
"Jk Canepa" <jkthecat@gmail.com>  
Tracking Status: None  
"Ellen Weininger" <eewgrassroots@aol.com>  
Tracking Status: None  
"Ellen Cantarow" <ecantarow@gmail.com>  
Tracking Status: None  
"Alison Rose Levy" <levyar@earthlink.net>

Tracking Status: None  
 "Sandra Galef" <galefs@assembly.state.ny.us>  
 Tracking Status: None  
 "Ellen Cantarow" <ecantarow@me.com>  
 Tracking Status: None  
 "John Sullivan" <john.sullivan811@gmail.com>  
 Tracking Status: None  
 "Kathryn Miles" <kate.miles.1@gmail.com>  
 Tracking Status: None  
 "Elizabeth Browning Studio" <elizabethbrowningstudio@gmail.com>  
 Tracking Status: None  
 "Elijah Shaheen" <goodguyfilms@gmail.com>  
 Tracking Status: None  
 "vaughey@aol.com" <vaughey@aol.com>  
 Tracking Status: None  
 "Lew, David" <David.Lew@nrc.gov>  
 Tracking Status: None  
 "Dentel, Glenn" <Glenn.Dentel@nrc.gov>  
 Tracking Status: None  
 "Dorman, Dan" <Dan.Dorman@nrc.gov>  
 Tracking Status: None  
 "Haagensen, Brian" <Brian.Haagensen@nrc.gov>  
 Tracking Status: None  
 "Trapp, James" <James.Trapp@nrc.gov>  
 Tracking Status: None

**Post Office:** comcast.net

Files	Size	Date & Time	
MESSAGE	3927	6/8/2016 12:24:27 PM	
20151203-nrc-manual-chapter-0326--operability-determinations.pdf			564867
ATT00001.htm	458		

**Options**  
**Priority:** Standard  
**Return Notification:** No  
**Reply Requested:** No  
**Sensitivity:** Normal  
**Expiration Date:**  
**Recipients Received:**

# NRC INSPECTION MANUAL

STSB

---

INSPECTION MANUAL CHAPTER 0326

---

OPERABILITY DETERMINATIONS & FUNCTIONALITY ASSESSMENTS FOR  
CONDITIONS ADVERSE TO QUALITY OR SAFETY

## TABLE OF CONTENTS

0326-01	PURPOSE
0326-02	SCOPE AND APPLICABILITY
02.01	Scope of SSCs for Operability Determinations
02.02	Scope of SSCs for Functionality Assessments
0326-03	DEFINED TERMS
03.01	Current Licensing Basis
03.02	Degraded Condition
03.03	Design Basis
03.04	Fully Qualified
03.05	Functional – Functionality
03.06	Nonconforming Condition
03.07	Operability Declaration
03.08	Operable – Operability
03.09	Reasonable Expectation
03.10	Specified Function/Specified Safety Function
0326-04	OPERABILITY DETERMINATION PROCESS
04.01	Review Activities
04.02	Assessing Potential Degraded or Nonconforming Conditions
04.03	Presumption of Operability
04.04	Scope of Operability Determinations
04.05	Circumstances Warranting Operability Determinations
04.06	Timing of Operability Determinations
04.06.01	Immediate Determination
04.06.02	Prompt Determination
04.07	Documentation
04.08	Operator Awareness and Responsibilities
0326-05	FUNCTIONALITY ASSESSMENT
05.01	Functional
05.02	Nonfunctional
0326-06	OPERATIONS BASED ON OPERABILITY DETERMINATIONS
06.01	Inoperable
06.02	Operable but Degraded or Nonconforming
06.03	Operability is Separate from Corrective Action to Restore Full Qualification
06.04	Enforcement Discretion
0326-07	CORRECTIVE ACTION
07.01	The Current Licensing Basis and 10 CFR Part 50, Appendix B
07.02	Timing of Corrective Actions
07.03	Compensatory Measures

- 07.04 Final Corrective Action
- 07.04.01 Change to Facility or Procedures in Lieu of Full Restoration
- 07.04.02 Change to the Current Licensing Basis to Accept an As-Found Condition

Appendix A SURVEILLANCES

- A.01 Operability during Technical Specification Surveillances
- A.02 System Configuration during Surveillance and Operability Testing
- A.03 Missed Technical Specification Surveillance

Appendix B MAINTENANCE

- B.01 Assessment and Management of Risk during Maintenance
- B.02 Operability during Maintenance
- B.03 Operable vs. Available
- B.04 Reduced Reliability as a Degraded or Nonconforming Condition

Appendix C SPECIFIC OPERABILITY ISSUES

- C.01 Relationship between the General Design Criteria and the Technical Specifications
- C.02 Single Failures
- C.03 Treatment of Consequential Failures in Operability Determinations
- C.04 Use of Alternative Analytical Methods in Operability Determinations
- C.05 Use of Temporary Manual Action in Place of Automatic Action in Support of Operability
- C.06 Use of Probabilistic Risk Assessment in Operability Decisions
- C.07 Use of Seismic Margin Analysis in Operability Decisions
- C.08 Environmental Qualification
- C.09 Technical Specification Operability vs. ASME OM Code Criteria
- C.10 Support System Operability
- C.11 Piping and Pipe Support Requirements
- C.12 Flaw Evaluation
- C.13 Operational Leakage from Code Class 1, 2, 3 Components
- C.14 Structural Requirements

ATTACHMENT 1 Operability Determination and Functionality Assessment Flowchart

ATTACHMENT 2 Scope of an Operability Determination as it Relates to the Scope of a Functionality Assessment

ATTACHMENT 3 Revision History for IMC 0326

## 0326-01 PURPOSE

This guidance is provided to NRC inspectors to assist their review of licensee determinations of operability and resolution of degraded or nonconforming conditions. In addition, many licensees have found this guidance useful in developing their plant-specific operability determination process. Users of the guidance should be aware that, although it generally reflects existing practice, it may not be directly applicable in every case at every plant. Therefore, inspectors should discuss significant differences among licensee practices with NRC management to ensure that the guidance is applied in a reasonable and consistent manner.

If, during an inspection, an NRC inspector obtains information reasonably indicating a degraded or nonconforming condition affecting any of the structures, systems, and components (SSCs) described in Section 0326-02 (Scope and Applicability), the inspector should promptly inform the appropriate level of licensee management so that the licensee can evaluate the operability or functionality of the SSCs.

NRC regulations and the plant-specific operating license, including technical specifications (TS), establish requirements for SSCs to ensure that plant operation does not pose an undue risk to public health and safety. Although these requirements limit the risk of plant operation, it is not possible to address all conceivable events or plant conditions.

The licensee's immediate and primary concern should be safe operation of the plant. When a degraded or nonconforming condition is identified that may pose a threat to public health and safety, whether or not explicitly discussed in regulatory or licensee documents, the plant should be placed in a safe condition. The TS require that an SSC be operable given the plant condition (operational mode); thus there should be a reasonable expectation that the SSC in question is operable while an operability determination is being made, or an appropriate TS action requirement should be entered.

## 0326-02 SCOPE AND APPLICABILITY

Licensees assess operability and functionality when degraded or nonconforming conditions affecting SSCs are identified.

### 02.01 Scope of SSCs for Operability Determinations

The operability determination process is used to assess operability of SSCs described in TS. The scope of SSCs considered within the operability determination process is as follows:

- a. SSCs that are required to be operable by TS in accordance with 10 CFR 50.36. These SSCs may perform required support functions for other SSCs required to be operable by TS (e.g., emergency diesel generators and service water).



- b. SSCs that are not explicitly required to be operable by TS, but that perform required support functions (as specified by the TS definition of operability) for SSCs that are required to be operable by TS. SSCs may also have design functions that do not perform a necessary and related support function for TS SSCs. These design functions are not within the scope of an operability determination, but may be within the scope of a Functionality Assessment. For example, (1) Nuclear Service Water supplied to components that do not have a TS specified safety function or a necessary and related support function and, (2) station battery nonconformance with Station Blackout Rule 10 CFR 50.63, Loss of all alternating current power would not necessarily render operating or shutdown DC Source LCO requirements not met and therefore inoperable.<sup>1</sup>

## 02.02 Scope of SSCs for Functionality Assessments

Functionality assessments should be performed for SSCs not described in TS, but which warrant programmatic controls to ensure that SSC availability and reliability are maintained. In general, these SSCs and the related controls are included in programs related to Appendix B to 10 CFR Part 50, "Quality Assurance Criteria for Nuclear Power Plants and Fuel Reprocessing Plants," and the maintenance rule (10 CFR 50.65). Additionally, SSCs not described in TS may warrant functionality assessments within the processes used to address degraded and nonconforming conditions because they perform functions described in the Updated Final Safety Analysis Report (UFSAR), technical requirements manual, emergency plan, fire protection plan, regulatory commitments, or other elements of the current licensing basis (CLB).

## 0326-03 DEFINED TERMS

03.01 Current Licensing Basis: The CLB is the set of NRC requirements applicable to a specific plant, plus a licensee's docketed and currently effective written commitments for ensuring compliance with, and operation within, applicable NRC requirements and the plant-specific design basis, including all modifications and additions to such commitments over the life of the facility operating license.

The set of NRC requirements applicable to a specific plant CLB include:

- a. NRC regulations in 10 CFR Parts 2, 19, 20, 21, 26, 30, 40, 50, 51, 54, 55, 70, 72, 73, and 100 and appendices thereto.
- b. Commission orders.
- c. License conditions.
- d. Exemptions.
- e. Technical specifications.
- f. Plant-specific design basis information defined in 10 CFR 50.2 and documented in the most recent UFSAR (as required by 10 CFR 50.71).
- g. Licensee commitments remaining in effect that were made in docketed licensing correspondence (such as licensee responses to NRC bulletins, Licensee Event Reports, generic letters, and enforcement actions).
- h. Licensee commitments documented in NRC safety evaluations.

---

<sup>1</sup> See TIA Testing of Station Batteries for Station Blackout (SBO) Conditions (Agency-wide Document Access System (ADAMS) Accession No. ML12109A349).

03.02 **Degraded Condition:** A degraded condition is one in which the qualification of an SSC or its functional capability is reduced. Examples of degraded conditions are failures, malfunctions, deficiencies, deviations, and defective material and equipment. Examples of conditions that can reduce the capability of a system are aging, erosion, corrosion, improper operation, and maintenance.

03.03 **Design Bases:** Design bases information, defined by 10 CFR 50.2,<sup>2</sup> is documented in the UFSAR as required by 10 CFR 50.71. The design basis of safety-related SSCs is established initially during the original plant licensing and relates primarily to the accident prevention or mitigation functions of safety-related SSCs. The design basis of a safety-related SSC is a subset of the CLB.

03.04 **Fully Qualified**<sup>3</sup>: An SSC is fully qualified when it conforms to all aspects of its CLB, including all applicable codes and standards, design criteria, safety analyses assumptions and specifications, and licensing commitments. An SSC is considered "not fully qualified," i.e., degraded or nonconforming, when it does not conform to all aspects of its CLB, including all applicable codes and standards, design criteria, safety analyses assumptions and specifications, and licensing commitments.

The SSCs that TS require to be operable are designed and operated, as described in the CLB, with design margins and engineering margins of safety to ensure, among other things, that some loss of quality does not result in immediate failure to meet a specified safety function. The CLB includes commitments to specific codes and standards, design criteria, and some regulations that also dictate margins. Many licensees add conservatism so that a partial loss of quality does not affect their commitments for design and operational margin. Loss of conservatism that is not credited in the CLB does not affect operability or functionality.

03.05 **Functional – Functionality:** Functionality is an attribute of an SSC(s) that is not controlled by TS. An SSC not controlled by TS is functional or has functionality when it is capable of performing its function(s) as set forth in the CLB. These CLB function(s) may include the capability to perform a necessary and related support function for an SSC(s) controlled by TS.

03.06 **Nonconforming Condition:** A nonconforming condition is a condition of an SSC that involves a failure to meet the CLB or a situation in which quality has been reduced because of factors such as improper design, testing, construction, or modification. The following are examples of nonconforming conditions:

- a. An SSC fails to conform to one or more applicable codes or standards (e.g., the CFR, operating license, TS, UFSAR, and/or licensee commitments).
- b. An as-built or as-modified SSC does not meet the CLB.

---

<sup>2</sup> NRC Regulatory Guide 1.186, "Guidance and Examples for Identifying 10 CFR 50.2 Design Bases," endorses Appendix B to Nuclear Energy Institute (NEI) document NEI 97-04, "Guidance and Examples for Identifying 10 CFR 50.2 Design Bases."

<sup>3</sup> The NRC does not have specific qualification requirements for SSCs, except for electric equipment important to safety, as set forth in 10 CFR 50.49.

- c. Operating experience or engineering reviews identify a design inadequacy.
- d. Documentation required by NRC requirements such as 10 CFR 50.49 is unavailable or deficient.

03.07 Operability Declaration: An operability declaration is a decision by a senior licensed operator on the operating shift crew that there is a reasonable expectation that an SSC can perform its specified safety function.

03.08 Operable – Operability: Improved Standard Technical Specifications (STS) (NUREGs 1430 through NUREG-1434) define “Operable – Operability” as follows:

A system, subsystem, train, component, or device shall be OPERABLE or have OPERABILITY when it is capable of performing its specified safety function(s), and when all necessary attendant instrumentation, controls, normal or emergency electrical power, cooling and seal water, lubrication and other auxiliary equipment that are required for the system, subsystem, train, component, or device to perform its specified safety function(s) are also capable of performing their related support function(s). (Emphasis added)

Plant-specific TS that are not based on the improved STS definition typically defines “Operable – Operability” as follows:

A system, subsystem, train, component, or device shall be OPERABLE or have OPERABILITY when it is capable of performing its specified function(s), and when all necessary attendant instrumentation, controls, electrical power, cooling or seal water, lubrication and other auxiliary equipment that are required for the system, subsystem, train, component, or device to perform its specified safety function(s) are also capable of performing their related support function(s). (Emphasis added)

As described above, plant-specific TS may differ from the improved STS definition of Operable – Operability. Therefore some judgment is needed in applying the guidance in this inspection manual chapter. Word differences that exist are not viewed by the NRC to imply a significant difference in application of the plant-specific TS. Any problems resulting from inconsistencies between a plant-specific definition of operability and this guidance should be discussed with regional managers, who should discuss the issues with NRR if deemed necessary. In all cases, a licensee’s plant-specific TS definition of Operable – Operability governs.

When a condition is discovered that calls into question that a “specified safety function”<sup>4</sup> of SSCs required to be operable by TS may not be met, then an operability determination should be made to determine if the SSC “specified safety function” is met. In order to be considered operable, an SSC must be capable of performing the specified safety functions of its design, within the required range of physical conditions, initiation times, and mission times in the CLB. In addition, TS

---

<sup>4</sup> In this inspection manual chapter the phrase “specified safety function” is synonymous with the phrase “specified function” used in plant-specific TS that do not have the ISTS definition of Operable – Operability language.

operability considerations require that an SSC meet all surveillance requirements (as specified in Surveillance Requirement (SR) Applicability SR 3.0.1). An SSC that does not meet an SR must be declared inoperable because the LCO operability requirement(s) are not met. For operability determination purposes, the mission time is the duration of SSC operation that is credited in the design basis for the SSC to perform its specified safety function. A system is expected to be tested and maintained to perform as designed. When an SSC capability is degraded to a point where it cannot perform with reasonable expectation or reliability, the SSC should be judged inoperable, even if at this instantaneous point in time the system could provide the specified safety function.

**03.09 Reasonable Expectation:** The discovery of a degraded or nonconforming condition may call the operability of one or more SSCs into question. A subsequent determination of operability should be based on the licensee's "reasonable expectation," from the evidence collected, that the SSCs are operable and that the operability determination will support that expectation. Reasonable expectation does not mean absolute assurance that the SSCs are operable. The SSCs may be considered operable when there is evidence that the possibility of failure of an SSC has increased, but not to the point of eroding confidence in the reasonable expectation that the SSC remains operable. The supporting basis for the reasonable expectation of SSC operability should provide a high degree of confidence that the SSCs remain operable. It should be noted that the standard of "reasonable expectation" is a high standard, and that there is no such thing as an indeterminate state of operability; an SSC is either operable or inoperable.

**03.10 Specified Function/Specified Safety Function:** The definition of operability refers to the capability to perform the "specified function" at non-improved TS plants or "specified safety function" at improved TS plants. The specified function/specified safety function of an SSC(s) is that specified safety function(s) in the CLB for the facility.

In addition to providing the specified safety function, an SSC is expected to perform as designed, tested and maintained. When system capability is degraded to a point where it cannot perform with reasonable expectation or reliability, the SSC should be judged inoperable, even if at this instantaneous point in time the SSC(s) could provide the specified safety function.

#### 0326-04 **OPERABILITY DETERMINATION PROCESS**

**Determinations of operability are appropriate whenever a review, TS surveillance, or other information calls into question the ability of SSCs to perform specified safety functions.** The operability determination process is used to assess operability of SSCs and their support functions for compliance with TS when a degraded or nonconforming condition is identified for a specific SSC required to be operable by TS, or when a degraded or nonconforming condition is identified for a necessary and related support function. PRA functional is used to calculate risk-informed extended TS Completion Times; however, the concept of PRA Functional – Functionality does not apply to Operable – Operability determinations. An SSC that is determined to be PRA functional could be determined to be TS inoperable. If an immediate threat to public health and safety is identified, actions should be taken quickly to place the plant in a safe condition in accordance with TS.

If the inspector has reason to question that action was delayed by the licensee when performing an operability determination for an SSC that is potentially degraded or nonconforming, then the inspector should, as appropriate, challenge the cause for delay and the basis for having a reasonable expectation of operability. The region may, with NRR concurrence as appropriate, ask that the licensee explain the perceived delay.

#### 04.01 Review Activities

Reviewing the performance of SSCs and ensuring their operability is a continual process. Potential degraded or nonconforming conditions of SSCs may be discovered during many activities including:

- a. Additions to facilities.
- b. Day-to-day operation of the facility.
- c. Design modifications to facilities.
- d. Engineering design reviews, including design basis reconstitution.
- e. Examinations of records.
- f. Inservice testing and inspection programs.
- g. Maintenance activities.
- h. NRC inspections.
- i. Observations from the control room.
- j. Operational event reviews.
- k. Operational experience reports.
- l. Part 21 notifications.
- m. Plant walkdowns and tours.
- n. Plant systems walkdowns.
- o. Quality assurance activities such as audits and reviews.
- p. SSC performance reviews (including common-cause mode failures).
- q. Vendor reviews or inspections.

#### 04.02 Assessing Potential Degraded or Nonconforming Conditions

When a potential degraded or nonconforming condition is identified, the licensee should take action without delay to confirm if an SSC is degraded or nonconforming. For example, licensees should not wait to complete extensive evaluations before entering the condition into their problem identification/corrective action process. The time required should be limited to the time necessary to understand the known or expected extent of degradation or nonconforming condition. In particular, an extended delay to complete an investigation or cause analysis is not appropriate.

#### 04.03 Presumption of Operability

The TS are organized and implemented on the presumption that systems are operable. Without information to the contrary, it is reasonable to assume that once a system or component is established as operable it will remain operable. The previous verification of operability (e.g., surveillance, or operability determination) provides that assurance. For example, a presumption

of operability might be appropriate if the record of the results of a test or surveillance is found to be missing but the licensee has other methods to verify that the activity was, in fact, successfully accomplished (e.g., log entries).

However, it would not be appropriate to presume operability based on the future results of an analysis when there is not a reasonable expectation that the system can perform its specified safety function during the interim. In other words, both “reasonable expectation of operability” and “presumption of operability” are based largely on specific sets of facts.

TS surveillances are performed periodically to verify that SSCs are operable. TS surveillances assure the necessary quality of systems and components is maintained, that facility operation will be within safety limits, and that the limiting conditions for operation will be met. Satisfactory performance of TS surveillances is usually considered sufficient to demonstrate operability. However, if conformance to criteria in the CLB that are both necessary and sufficient to establish operability cannot be established with reasonable expectation, then performance of the surveillance requirement may not, by itself, be sufficient to demonstrate operability. Failure to conform to CLB criteria that are not needed to demonstrate operability should be addressed by the appropriate licensee process. An example of when surveillances would not be sufficient to establish operability is the satisfactory completion of TS surveillance but with results that show a degrading trend and indicate that acceptance criteria might not be met before the next surveillance test. In this case, the surveillance actually identifies the conditions when the SSC will become inoperable and an operability evaluation would be warranted.

An application for this example is an emergency diesel generator that passes its monthly surveillance test. However, a licensee evaluation of vibration data recorded on a generator bearing could determine that the emergency diesel generator would not remain operable for its 30-day mission time. In this instance, the emergency diesel generator may be capable of passing several more surveillances with each test lasting only a few hours. While recording generator vibration data is not a requirement of TS or an industry code or standard, once the degraded or nonconforming condition is identified, component operability should be immediately assessed.

#### 04.04 Scope of Operability Determinations

The scope of an operability determination must be sufficient to address the capability of SSCs to perform their specified safety functions. The operability decision may be based on analysis, a test or partial test, experience with operating events, engineering judgment, or a combination of these factors, considering SSC functional requirements.

- a. Operability determinations should include:
  - (1) The SSCs affected by the degraded or nonconforming condition.
  - (2) The extent of condition for all similarly affected SSCs.
  - (3) The CLB requirements or commitments established for the affected SSC.



- (4) The specified safety functions performed by the affected SSCs.
  - (5) The effect or potential effect of the degraded or nonconforming condition on the affected SSCs ability to perform specified safety functions.
  - (6) Whether there is a reasonable expectation of operability, including the basis for the determination and any compensatory measures put in place to establish or restore operability.
- b. The following things should be considered when performing operability determinations:
- (1) Design basis events are plant-specific, and plant-specific TS, bases, and safety evaluations may contain plant-specific considerations related to operability.
  - (2) The SSC operability requirements are based on safety analysis of specific design basis events for one mode or specified condition of operation and may not be the same for other modes or conditions of operation, so all applicable modes and conditions of operation should be considered.
  - (3) The operability requirements for an SSC encompass all necessary support systems (per the TS definition of operability) regardless of whether the TS explicitly specify operability requirements for the support functions.
  - (4) The occurrence of multiple simultaneous design basis events should be considered only to the extent that they are described in the plant's CLB.

#### 04.05 Circumstances Warranting Operability Determinations

Licensees should enter the operability determination process on discovering any of the following circumstances when the operability of any SSC described in TS is called into question.

##### Circumstances that require an operability determination:

- a. Degraded conditions.
- b. Nonconforming conditions.
- c. Discovery of an unanalyzed condition.

See Sections 02.01.b and Appendix C.10 for discussions of the relationship between necessary and related support functions and the operability of SSCs described in TS.

If an SSC is clearly inoperable (e.g., loss of motive power or failed TS surveillance), it must be declared inoperable and the operability determination process, per this guidance, need not be entered. Note that other licensee processes and programs may need to be considered (e.g., corrective action program, availability, maintenance rule, reportability) when SSCs are declared inoperable.

#### 04.06 Timing of Operability Determinations

Operability should be determined immediately upon discovery that an SSC subject to TS is in a degraded or nonconforming condition. While this determination may be based on limited information, the information should be sufficient to conclude that there is a reasonable expectation that the SSC is operable. If not able to conclude this, the licensee should declare the SSC inoperable. In any case, if the available information is incomplete, the licensee should promptly collect any additional information that is material to the determination (i.e., information that could result in a change to determination), and promptly make an operability determination based on the complete set of information. If, at any time, information is developed that negates a previous determination that there is a reasonable expectation that the SSC is operable, the licensee should declare the SSC inoperable. Appendix C of this manual chapter provides additional guidance on this subject.

##### 04.06.01 Immediate Determination

After confirming the circumstances described in Section 04.05, an immediate determination of SSC operability should be completed. The determination should be made without delay and in a controlled manner using the best available information. Licensees should not postpone the determination until receiving the results of detailed evaluations. (Emphasis added) If a piece of information material to the determination is missing or unconfirmed, and cannot reasonably be expected to support a determination that the SSC is operable, the licensee should declare the SSC inoperable. While the determination is in progress, operators should remain aware of the status of affected SSCs. The immediate determination should document the basis for concluding that a reasonable expectation of operability exists. When a reasonable expectation of operability does not exist, the SSC should be declared inoperable.

##### 04.06.02 Prompt Determination

A prompt determination of SSC operability is a follow up to an immediate determination of SSC operability. A prompt determination is warranted when additional information, such as supporting analysis, is needed to confirm the immediate determination.

A prompt determination, when needed, should be done without delay. Licensees should make continuing progress toward completing the determination. A reasonable expectation of operability should exist while the prompt determination is being done.

A prompt determination is not always necessary. For example:

- a. If a component is declared inoperable and taken out of service for repairs, a prompt determination (to generate additional information about the inoperability) is not necessary.
- b. If sufficient information is available at the time of the immediate determination and new information will not change the outcome, a prompt determination is not necessary.



There is no explicit time limit for completing a prompt determination. Nevertheless, timeliness is important and should depend on the safety significance of the issue. For example, it may be appropriate to make a prompt operability determination within a few hours for situations involving highly safety significant SSCs. Prompt determinations can often be done within 24 hours of discovery even if complete information is not available. If more time is needed to gather additional information (such as a vendor analyses or calculations) the licensee can evaluate the risk importance of the additional information to decide whether to prolong the operability determination. TS completion time is one factor that can be used in determining an appropriate time frame within which a prompt determination should be completed. However, in all cases a prompt determination should be done consistent with the risk significance of the SSC.

#### 04.07 Documentation

Operability determinations should be documented in sufficient detail to allow an individual knowledgeable in the technical discipline associated with the condition to understand the basis for the determination. For straightforward conditions, only the assumptions of the operability determination need be documented, but for complex conditions, detailed calculations may be necessary. Adequate documentation is necessary to establish a basis to allow for subsequent independent reviews. Immediate determinations need not be extensively documented; for example, it may be appropriate to accept a checked box. Plant record systems, such as operator logs or the corrective action program, are often sufficient documentation.

The documentation for prompt determinations should include additional information necessary to support a reasonable expectation that the SSC is operable. Supporting information should be included or appropriately referenced. This documentation should describe the scope and basis of the determination, which may include items discussed in Section 04.04.

#### 04.08 Operator Awareness and Responsibilities

The operating shift crew is responsible for overall control of facility operation. As part of that responsibility, the operating shift crew must be aware of the operability and functionality of plant SSCs and the status of degraded or nonconforming conditions that may affect plant operation. A senior licensed operator on the operating shift crew with responsibility for plant operations makes the declaration of operability, i.e., “makes the call” on whether an SSC described in TS is operable or inoperable (Section 03.08).

Plant staff in other organizations (e.g., operations, engineering, and licensing) with expertise in the subject matter and appropriate knowledge of plant operations may prepare operability determinations. Whoever prepares the evaluation of degraded or nonconforming conditions should inform the licensed operators responsible for operating the plant of the discovery, and the status of evaluations that affect plant operation.

## 0326-05 FUNCTIONALITY ASSESSMENT

### 05.01 Functional

Functionality and operability are similar but separate concepts. Determinations of functionality are appropriate whenever a review, TS surveillance, or other information calls into question the ability of an SSC not required to be operable by TS to perform its CLB function(s). A CLB function(s) may also perform a necessary and related support function for a SSC controlled by TS. While all licensees have a specific operability determination process for making operability determinations for SSCs described in TS, including consideration of necessary and related support functions (Sections 02.01.b and Appendix C.10), most do not have a specific process for evaluating the functionality of SSCs not described in TS. Refer to Attachment 2, "Scope of an Operability Determination as it Relates to the Scope of a Functionality Assessment." Normally, functionality is assessed and documented through other plant processes such as the corrective action process. It is appropriate to consider safety significance in determining the appropriate depth of a functionality assessment. Also, the effect of nonfunctional SSCs on compliance with other regulatory requirements (e.g., Appendix R, station blackout, ATWS, environmental qualification, maintenance rule) should be determined.

### 05.02 Nonfunctional

If any SSCs not described in TS have been determined to be nonfunctional and it is not a necessary and related support function for an SSC described in TS, then the appropriate corrective actions should be taken. Note that other licensee processes and programs may need to be considered (e.g., availability, maintenance rule, reportability) when SSCs are not functional. Similarly, if any SSCs not in TS have been determined to be functional, even though a degraded or nonconforming condition is present, then the SSCs are considered functional but degraded or nonconforming and the appropriate corrective action should be taken.

## 0326-06 OPERATIONS BASED ON OPERABILITY DETERMINATIONS

### 06.01 Inoperable

An SSC is considered inoperable and the associated LCO must immediately be declared not met for the following conditions:

- a. A specified TS requirement is not satisfied.
- b. A degraded or nonconforming condition results in an SSC being unable to perform its specified safety function. This could be determined immediately upon discovery of the condition, (e.g., a self-revealing event that demonstrates the SSC is inoperable), as a result of the immediate operability determination, or as a result of the prompt operability determination.

## 06.02 Operable but Degraded or Nonconforming

If an SSC described in TS is determined to be operable even though a degraded or nonconforming condition is present, the SSC is considered “operable but degraded or nonconforming.” For example, an SSC may be operable even though it may not conform to the environmental qualification requirements.

An SSC that is determined to be operable but degraded or nonconforming is considered to be in compliance with its TS LCO, and the operability determination is the basis for continued operation.<sup>5</sup> This is consistent with the plant TS controlling decisions on plant operations. The basis for continued operation should be frequently and regularly reviewed until corrective actions are successfully completed. SSCs that have been determined operable through an operability determination remain operable as long as the reasonable expectation of operability established by the operability determination remains valid.

The discovery of an improper or inadequate TS value or required action is considered a degraded or nonconforming condition. Guidance on correcting plant TS when they are found to contain nonconservative values or to specify incorrect actions is given in Administrative Letter 98-10, “Dispositioning of Technical Specifications That Are Insufficient To Assure Plant Safety.”

In some cases a licensee may discover a noncompliance with a regulation. The noncompliance with the regulation should be treated as a degraded or nonconforming condition, and the operability or functionality of affected SSCs assessed. If the noncompliance is not addressed by the operating license or the TS (i.e., the noncompliance has no impact on any specified safety function), the licensee should determine if the noncompliance raises an immediate safety issue. The time taken to complete the corrective action should be commensurate with the safety significance of the noncompliance. (Emphasis added) Immediate action such as shutting down the plant may not be required, unless otherwise specified by NRC requirements. The licensee should determine if any other NRC requirements apply to the situation (e.g., 10 CFR Part 50, Appendix B, Criterion XVI, “Corrective Action,” or 10 CFR 50.12, “Specific Exemptions”) and take any action required.

## 06.03 Operability is Separate from Corrective Action to Restore Full Qualification

The purpose of an operability determination is to provide a basis for making a timely decision on plant operation when a degraded or nonconforming condition is discovered. Corrective actions taken to restore full qualification should be addressed through the corrective action process. The treatment of operability as a separate issue from the restoration of full qualification emphasizes that the operability determination process is focused on safe plant operation and should not be impacted by decisions or actions necessary to plan and implement corrective action (i.e., restore full qualification)

---

<sup>5</sup> Exceptions to this general statement are possible, for example, in the case of a facility that is experiencing significant performance problems that have led to issuance of a confirmatory action letter or order preventing the licensee from continuing to operate or resuming operation until NRC approves.

#### 06.04 Enforcement Discretion

Under unique circumstances, a licensee may experience an unanticipated, temporary noncompliance with a TS or license condition that would result in one or more of the following:

- a. An unnecessary plant transient.
- b. An unnecessary down-power or the shutdown of a reactor without a corresponding health and safety benefit.
- c. The performance of testing, inspection, or system realignment that is inappropriate for the specific plant conditions.
- d. Unnecessary delays in plant startup without a corresponding health and safety benefit.
- e. The potential for an unexpected plant shutdown during severe weather, a pandemic, other natural phenomena, or a terrorist attack that could exacerbate already degraded electrical grid conditions and could have an adverse impact on the overall public health and safety or common defense and security.

If there is time to obtain an amendment, a licensee should seek to obtain it before taking action that is not in compliance with license conditions, TS or the CLB, except in certain emergency situations when 10 CFR 50.54(x) and (y) apply. If there is not sufficient time to obtain a license amendment, licensees may seek enforcement discretion from the NRC. Guidance applicable to these limited circumstances is provided in NRC Inspection Manual Chapter 0410, "Notices of Enforcement Discretion."

#### 0326-07      CORRECTIVE ACTION

##### 07.01 The Current Licensing Basis and 10 CFR Part 50, Appendix B

When licensing a plant, the NRC reviews the design information submitted by a license applicant to assure that the plant meets NRC rules and regulations (i.e., the licensing basis). The NRC issues a license authorizing the licensee to operate and maintain the plant in accordance with NRC rules and regulations, the conditions of the license, and plant TS. Licensee operation and maintenance of the plant in accordance with the license, and any changes to the license, ensure that the basis for NRC approval of the plant design remains valid.

The NRC has established various processes for making changes to the plant design in a controlled manner. Changes to the license and TS can be made by license amendments. Licensees may make changes to a facility in accordance with 10 CFR 50.59. For significant conditions adverse to quality, licensees are required by Criterion XVI of 10 CFR Part 50, Appendix B, to promptly identify and correct the conditions and take action to prevent recurrence. When resolving degraded or nonconforming conditions through corrective action,

licensees may make changes to a facility in accordance with the appropriate change control process.

The NRC has also established requirements for plant operation during maintenance in accordance with the CLB. For degraded or nonconforming conditions of SSCs described in TS, the license and TS normally specify the required actions to meet NRC requirements. For maintenance, 10 CFR 50.65 may also specify additional requirements for SSCs, including risk assessments, enhanced monitoring, and repair and/or replacement activities. If a change is risk-significant, a review of potential contingency plans for entering an increased risk profile should be done as well as a review of ongoing and planned maintenance activities.

NRC is also kept informed of operational events and plant operation issues by compliance with the reporting requirements in the TS, 10 CFR 50.72, 50.73, 50.9(b), 10 CFR Part 21, and other parts of the CFR.

Collectively, these requirements are a process for ensuring that licensees either continue to operate in accordance with their plant's CLB, or place their plants in a safe condition and take prompt corrective action. Both the operability determination process and corrective actions for degraded or nonconforming conditions are intended to be consistent with the process for ensuring that licensees continue to operate the facility in accordance with the CLB.

#### 07.02 Timing of Corrective Actions

The licensee should establish a schedule for completing a corrective action when an SSC is determined to be degraded or nonconforming. Licensees should address any degraded or nonconforming condition in a time frame commensurate with the safety significance of the condition, even though 10 CFR Part 50, Appendix B, Criterion XVI, "Corrective Action," applies only to activities that affect the safety-related functions of SSCs.

In determining whether the licensee is making reasonable efforts to complete corrective actions promptly, the NRC will consider safety significance, the effects on operability, the significance of the degradation, and what is necessary to implement the corrective action. The NRC may also consider the time needed for design, review, approval, or procurement of the repair or modification; the availability of specialized equipment to perform the repair or modification; and whether the plant must be in hot or cold shutdown to implement the actions. If the licensee does not resolve the degraded or nonconforming condition at the first available opportunity or does not appropriately justify a longer completion schedule, the staff would conclude that corrective action has not been timely and would consider taking enforcement action. Factors that should be considered are (1) the identified cause, including contributing factors and proposed corrective actions, (2) existing conditions and compensatory measures, including the acceptability of the schedule for repair and replacement activities, (3) the basis for why the repair or replacement activities will not be accomplished prior to restart after a planned outage (e.g., additional time is needed to prepare a design/modification package or to procure necessary components), and (4) review and approval of the schedule by appropriate site management and/or oversight organizations.

### 07.03 Compensatory Measures

When evaluating the effect of a degraded or nonconforming condition on an SSC's capability to perform any of its specified safety functions, a licensee may decide to implement compensatory measures as an interim action until final corrective action to resolve the condition is completed. Reliance on compensatory measures is an important consideration in establishing the time frame for completing corrective action.

#### Compensatory measures may be used to:

- a. **Maintain or enhance an operable but degraded or nonconforming SSC's capability to perform its specified safety functions, or as the next logical step in support of corrective maintenance or to compensate for the degraded or nonconforming condition.** Implementing compensatory measures for SSCs that have been determined to be degraded or nonconforming may restore plant operating margins.
- b. **Restore inoperable SSCs to an operable but degraded or nonconforming status.** In general, these measures should have minimal impact on the operators or plant operations, should be relatively simple to implement, and should be documented with a prompt operability determination.

The NRC expects that conditions calling for compensatory measures to restore SSC operability will be more quickly resolved than conditions that do not rely on compensatory measures to restore operability. The reason is that reliance on compensatory measures to restore SSC operability suggests a greater degree of degradation or nonconformance. Similarly, the NRC expects that conditions calling for compensatory measures to restore operability, where the compensatory measures substitute manual operator actions for automatic actions to perform a specified safety function, will be resolved expeditiously. Appendix C.05 contains guidance on the temporary use of manual actions instead of automatic actions to support operability determinations.

The licensee should evaluate the technical acceptability and effectiveness of a compensatory measure with respect to the degraded or nonconforming condition and the affected SSCs. The evaluation should also consider the effects of the compensatory measure on other aspects of the facility. For example, a licensee may plan to close a valve as a compensatory measure to isolate a leak. Although this action temporarily resolves the degraded condition, it may also affect flow distribution to other components or systems, complicate operator responses to normal or off-normal conditions, or have other effects that should be reviewed.

Additionally, if a compensatory measure involves a temporary facility or procedure change, 10 CFR 50.59 should be applied to the temporary change with the intent to determine whether the temporary change/compensatory measure itself (not the degraded or nonconforming condition) impacts other aspects of the facility or procedures described in the UFSAR. In considering whether a temporary facility or procedure change impacts other aspects of the facility, a licensee should apply 10 CFR 50.59, paying particular attention to ancillary aspects of the temporary change that result from actions taken to directly compensate for the degraded condition.



Licensees may use the guidance in NEI 96-07, Revision 1, "Guidelines for Implementing 10 CFR 50.59," which is endorsed by Regulatory Guide 1.187, "Guidance for Implementation of 10 CFR 50.59, Changes, Tests, and Experiments."

#### 07.04 Final Corrective Action

A licensee's range of corrective action may involve (1) full restoration to the UFSAR described condition, (2) a change to the licensing basis to accept the as-found condition as is, or (3) some modification of the facility or CLB other than restoration to the condition as described in the UFSAR.

If corrective action is taken to restore the degraded or nonconforming SSC to the UFSAR described condition, no 10 CFR 50.59 screening evaluation is required. The 10 CFR 50.59 process applies when the final resolution of the degraded or nonconforming condition differs from the established UFSAR description or analysis. At this point, the licensee plans to make a change to the facility or procedures as described in the UFSAR. The proposed change is now subject to the review process established by 10 CFR 50.59. A change can be safe but still require NRC approval under the rule. The proposed final resolution may require staff review and approval (via amendment) without affecting the continued operation of the plant because interim operation is governed by the processes for determining operability and taking corrective action (10 CFR Part 50, Appendix B).

In two situations, the identification of a final resolution or final corrective action requires a 10 CFR 50.59 review, unless another regulation applies (e.g., 10 CFR 50.55a): (1) when a licensee decides the final corrective action is to change its facility or procedures to something other than full restoration to the UFSAR-described condition and (2) when a licensee decides to change its licensing basis, as described in the UFSAR, to accept the degraded or nonconforming condition as its revised licensing basis. Both situations are discussed in greater detail below.

In both situations, the potential need to obtain NRC approval for a change does not affect the licensee's authority to operate the plant. The licensee may make mode changes, restart from outages, etc., with degraded or nonconforming conditions provided that operations in these conditions do not violate the TS or the license. The basis for this authority to continue to operate is that the TS contains the specific characteristics and conditions of operation necessary to avoid an abnormal situation or event that might give rise to an immediate threat to public health and safety.

##### 07.04.01 Change to Facility or Procedures in Lieu of Full Restoration

In this situation, the licensee's proposed final resolution of the degraded or nonconforming condition includes other changes to the facility or procedures to cope with the uncorrected or only partially corrected degraded or nonconforming condition. Rather than fully correcting the degraded or nonconforming condition, the licensee decides to restore capability or margin by making another change. In this case, the licensee must evaluate the change from the UFSAR-described condition to the final condition in which the licensee proposes to operate its facility. If the 10 CFR 50.59 screening and/or evaluation concludes that a change to the TS is involved or the change meets any of the evaluation criteria specified in the rule for prior NRC

approval, a license amendment must be requested, and the corrective action process is not complete until the approval is received or some other resolution occurs.

#### 07.04.02 Change to the Current Licensing Basis to Accept an As-Found Condition

In the other situation, the licensee proposes to change the CLB to accept the as-found nonconforming condition. In this case, the 10 CFR 50.59 review covers the change from the UFSAR-described condition to the existing condition in which the licensee plans to remain (i.e., the licensee will exit the corrective action process by revising its licensing basis to document acceptance of the condition). If the 10 CFR 50.59 screening and/or evaluation concludes that a change to the TS is involved or the change meets any of the evaluation criteria specified in the rule for prior NRC approval, a license amendment must be requested and the corrective action process is not complete until the approval is received or some other resolution occurs. To resolve the degraded or nonconforming condition without restoring the affected SSC to its CLB, a licensee may need to obtain an exemption from 10 CFR Part 50 in accordance with 10 CFR 50.12 or relief from a design code in accordance with 10 CFR 50.55a. The use of 10 CFR 50.59, 50.12, or 50.55a does not relieve the licensee of the responsibility to comply with 10 CFR Part 50, Appendix B, Criterion XVI, "Corrective Action," for significant conditions adverse to quality to determine the root cause, to examine other affected systems, to take action to prevent recurrence, and to report the original condition, as appropriate.

END



## Appendix A SURVEILLANCES

### A.01 Operability during Technical Specification Surveillances

If performance of TS surveillances requires that SSCs required to be operable by the TS be rendered incapable of performing their specified safety function, the SSCs are inoperable. The LCO must immediately be declared not met. Upon completion of the surveillance, the licensee should verify restoration to operable status of at least the parts of the SSCs or system features that were altered to accomplish the surveillance.

TS permits use of action statements to perform surveillance testing for several reasons. One reason is that the time needed to perform most surveillance tests is usually only a small fraction of the completion time for the required action. Another reason is that the safety benefits (increased level of assurance of reliability and verification of operability) of meeting surveillance requirements more than compensates for the safety risk for operating the facility when a TS LCO is not met.

### A.02 System Configuration during Surveillance and Operability Testing

It is preferable that TS surveillances be performed in the same configuration and conditions representative of those the system must be in to perform its specified safety function. However, testing in other configurations or conditions may be required if testing in the specified safety function configuration would result in unjustifiable safety concerns or transients. In this case, the surveillance requirement acceptance criteria in the TS for the test condition should be based on an extrapolation from the test condition to the condition in which the specified safety function is performed. Operability is based on meeting the acceptance criteria specified in the TS. The system configuration for TS surveillance requirements is usually prescribed, and the acceptance criteria are based on the prescribed configuration.

Test failures should be examined to determine the cause and correct the problem before resumption of testing. Repetitive testing to achieve acceptable test results without identifying the root cause or correction of a problem in a previous test is not acceptable as a means to establish or verify operability and may constitute "preconditioning."

### A.03 Missed Technical Specification Surveillance

When a TS surveillance is missed, the TS for a missed surveillance should be followed. For most plants STS SR 3.0.3 or the equivalent applies.

NRC Generic Letter 87-09, "Sections 3.0 and 4.0 of the Standard Technical Specifications (STS) of the Applicability of Limiting Conditions for Operation and Surveillance Requirements," dated June 4, 1987, contains a TS allowance which gives the licensee time to perform a missed surveillance.

Subsequent to Generic Letter 87-09, Technical Specifications Task Force Traveler 358, Revision 6, "Missed Surveillance Requirements," provided model TS for risk informed options for delaying missed surveillances.

SR 3.0.3 may not be applied when a licensee discovers that a TS surveillance has never been performed. In cases where a specified safety function or a necessary and related support function required for operability has never been performed, then a reasonable expectation of operability does not exist. However, SR 3.0.3 would apply should the licensee determine that a TS surveillance had been demonstrated outside of routine surveillances, e.g., for post-maintenance testing, or for testing resulting from normal or off-normal plant operations.

END

## Appendix B MAINTENANCE

### B.01 Assessment and Management of Risk during Maintenance

After discovering a degraded or nonconforming condition, a licensee usually does corrective maintenance to restore an SSC to meet all aspects of the plant's CLB. The TS and/or risk assessment should be used to determine the appropriate time frame to complete the maintenance or take other action. The maintenance rule, 10 CFR 50.65, provides requirements for monitoring the effectiveness of maintenance at nuclear power plants. The underlying objective is to help maintain plant safety by trending the performance and condition of SSCs within the scope of the rule in terms of reliability and availability and by using the data to predict the future performance and condition of the SSCs and to assess the effectiveness of maintenance. Specifically, 10 CFR 50.65(a)(3) requires licensees to appropriately balance the objective of preventing failures of SSCs through maintenance (i.e., reliability) against the objective of maximizing availability of SSCs by monitoring or preventive maintenance. Additionally, 10 CFR 50.65(a)(4) requires that licensees perform risk assessments before maintenance activities involving SSCs within the scope of paragraph (a)(4) and manage any resulting increases in overall plant risk.

The risk assessment performed by the licensee per 10 CFR 50.65(a)(4) should reflect the unavailability of the affected SSCs during the performance of maintenance. In addition, the assessment should also consider the unavailability of any degraded or nonconforming SSCs determined to be inoperable or nonfunctional. Performing the 10 CFR 50.65(a)(4) risk assessment, however, does not exempt the licensee from complying with its license (including TS) and other applicable regulations.

Maintenance activities may also require compensatory measures to allow the maintenance to be performed and/or to reduce risk. Compensatory measures for maintenance should be assessed consistent with NUMARC 93-01, Section 11, as endorsed by NRC regulatory guides. Certain compensatory measures may involve temporary procedures or facility alterations to allow the maintenance to be performed or to reduce risk. Examples are jumpered terminals, lifted leads, and temporary blocks, bypasses, or scaffolding. Temporary alterations for maintenance should be reviewed under 10 CFR 50.59, as applicable, consistent with NEI 96-07, which is endorsed by NRC Regulatory Guide 1.187.

The planned removal of hazard barriers for maintenance is considered a temporary facility alteration. Additional guidance on hazard barriers is provided in Regulatory Issue Summary (RIS) 2001-009, "Control of Hazard Barriers," dated April, 2, 2001. In all cases, licensees must continue to comply with the plant TS, particularly the operability provisions applicable to the protected SSCs. RIS 2001-09 states that the operability guidance in the NRC Inspection Manual can be used to evaluate the operability of protected equipment.

### B.02 Operability during Maintenance

During maintenance (preventive, predictive, or corrective), SSCs may be removed from service and rendered incapable of performing their functions. For SSCs described in TS, such SSCs

are clearly inoperable. The maintenance activity and any TS required actions are expected to be finished within the allowed completion times. A licensee may take SSCs out of service to perform maintenance during power operation of the plant, but the SSC must meet the requirements of 10 CFR 50.65 as well as the TS requirements. This is true for maintenance activities under all modes of plant operation. The licensee also may need to reestablish operability for systems or components that are rendered inoperable by SSCs undergoing maintenance.

### B.03 Operable vs. Available

Operable – Operability is defined in Section 1.1 of the Standard Technical Specifications (see Definition 03.08). Both the maintenance rule and the performance indicator (PI) process use the word "availability" relative to the functions being monitored by the maintenance rule and the PI process. The difference between "operability" and "availability" lies in the function being reviewed; to understand the differences the inspector should review supporting documents for the maintenance rule and the PI process (NEI 99-02, "Regulatory Assessment Performance Indicator Guidelines") including Regulatory Guide 1.160, "Monitoring the Effectiveness of Maintenance at Nuclear Power Plants," and Regulatory Guide 1.182, "Assessing and Managing Risk Before Maintenance Activities at Nuclear Power Plants."

### B.04 Reduced Reliability as a Degraded or Nonconforming Condition

Reliability is a measure of the reasonable expectation of the ability of an SSC to perform its function(s) described by the CLB. The reliability is initially based on design verification, quality assurance, production testing, and acceptance processes. In service, reliability is based on operating experience (i.e., the SSC successfully performs its specified safety function or necessary and related support function on demand). Reliability is often expressed in numbers of successes for a given number of demands.

When an SSC experiences multiple failures, especially repetitive failures (i.e., failures for the same or a similar cause) such as those addressed in licensees' maintenance rule programs, and when the failures exceed the number of expected failures based on operating experience, the reliability of the affected SSC is reduced.

An SSC that has been identified as having reduced reliability should be considered degraded or nonconforming and should be evaluated to determine whether the SSC is operable. Non-TS SSCs with reduced reliability should be similarly treated as described in this document. When an SSC's capability or reliability is degraded to the point where there is no longer a reasonable expectation that it can perform its specified safety function, the SSC should be judged inoperable. A reliability reduction that calls into question the ability of an SSC to perform its specified safety function requires an operability determination.

Various factors may contribute to reduced reliability. Aging of SSCs is a factor of increasing importance and it should be addressed as discussed in Section 0326-04 of this document.

Note also that reduced reliability may affect the validity of underlying assumptions in one or more of the programs that use reliability information. The plant's probabilistic risk assessment (PRA)

uses assumed or default values for SSC failure rates, another expression of reliability, in fault-tree analysis. Therefore, significant or persistent changes in the reliability of SSCs modeled in the PRA may need to be evaluated to determine the need to update the PRA and PRA derivatives such as risk assessment tools to reflect the actual risk environment. Regulatory Guide 1.200, "An Approach for Determining the Technical Adequacy of Probabilistic Risk Assessment Results for Risk-Informed Activities" provides the NRC position on frequency for updating PRA reliability and unavailability data.

END

## Appendix C SPECIFIC OPERABILITY ISSUES

### C.01 Relationship between the General Design Criteria (GDC) and the Technical Specifications

The GDC, or a plant-specific equivalent<sup>6</sup> as incorporated into the CLB, have an important relationship to the operability requirements of the TS. Comprehending this relationship is critical to understanding how licensees should address nonconformance with CLB design requirements. Some facilities were licensed before the GDC were codified in 10 CFR. As a result the applicability of the GDC varies among facilities. In all cases, the plant-specific current licensing basis governs.

The GDC and the TS differ from each other in that the GDC specify requirements for the *design* of nuclear power reactors, whereas the TS specifies requirements for the *operation* of nuclear power reactors. As such, the GDC cover a broad category of SSCs that are important to safety, including those SSCs that are covered by TS. Failure to meet GDC, as described in the licensing basis (e.g., nonconformance with the CLB for protection against flooding, seismic events, tornadoes) should be treated as a nonconforming condition and is an entry point for an operability determination if the nonconforming condition calls into question the ability of SSCs to perform their specified safety function(s) or necessary and related support function(s). If the licensee determination concludes that the TS SSC is nonconforming but operable or the necessary and related support function is nonconforming but functional, it would be appropriate to address the nonconforming condition through the licensee's corrective action program. However, if the licensee's evaluation concludes that the TS SSC is inoperable, then the licensee must enter its TS and follow the applicable required actions.

#### The GDC Correspond Both Directly and Indirectly to TS Operational Requirements

Design requirements, such as GDC or similar requirements, are typically included in the licensing basis for every nuclear power plant. The GDC, according to Appendix A to 10 CFR Part 50, "establish the necessary design, fabrication, construction, testing, and performance requirements for structures, systems, and components important to safety." As such, the GDC cover a broad category of SSCs that are important to safety, including those SSCs that are covered by TS. The safety analysis report describes the design capability of the facility to meet the GDC (or a plant-specific equivalent). The staff safety evaluation report documents the acceptability of safety analysis report analyses. The analyses and evaluation included in the safety analysis serve as the basis for TS issued with the operating license. The TS limiting conditions for operation, according to 10 CFR 50.36(c)(2)(i), "are the lowest functional capability or performance levels of equipment required for safe operation of the facility." Section 182 of the Atomic Energy Act of 1954, as amended and as implemented by 10 CFR 50.36, requires that those design features of the facility that, if altered or modified, would have a significant effect on safety, be included in the TS. Thus, TS are intended to ensure that the most safety significant design

---

<sup>6</sup> For example, plants with construction permits issued prior to May 21, 1971, may have been approved for construction based on the proposed General Design Criteria published by the Atomic Energy Commission (AEC) in the Federal Register (32 FR 10213) on July 11, 1967, sometimes referred to as the AEC Draft GDC.

features of a plant, as determined by the safety analysis, maintain their capability to perform their safety functions, i.e., that SSCs are capable of performing their specified safety functions or necessary and related support functions.

Required actions and completion times of the TS illustrate the relationship between the GDC and the TS. For example, the GDC may require redundancy of function for safety systems. This is normally accomplished by incorporating at least two redundant trains into the design of the safety systems. The TS typically allows a facility to continue to operate for a specified time with only one train of a two-train safety system operable. In that case, the GDC are met because the system design provides the necessary redundancy. The TS permit the operation of the system with only a single train based on an evaluation of the protection provided by the unique system lineup for the specified period. Not all GDC that are included in the CLB are explicitly identified in TS. However, those that are not explicitly identified may still need to be considered when either determining or establishing the basis for operability of TS SSCs.

## C.02 Single Failures

A single failure is defined as follows in 10 CFR Part 50, Appendix A, "General Design Criteria for Nuclear Power Plants.

A single failure means an occurrence which results in the loss of capability of a component to perform its intended safety functions. Multiple failures resulting from a single occurrence are considered to be a single failure.

Appendix A contains GDC for SSCs that perform major safety functions. Many of the GDC, for example GDC 17, 21, 34, 35, 38, 41, and 44, contain a statement similar to the following:

Suitable redundancy in components and features and suitable interconnections, leak detection, isolation and containment capabilities shall be provided to assure that for onsite electrical power system operation (assuming offsite power is not available) and for offsite electrical power system operation (assuming onsite power is not available) the system safety function can be accomplished assuming a single failure.

Therefore, if these provisions are incorporated into the licensing basis the capability to withstand a single failure in fluid or electrical systems becomes a plant-specific design requirement ensuring that a single failure does not result in a loss of the capability of the system to perform its specified safety function or necessary and related functions. Where the licensing basis does not require redundancy, the single failure guidance herein does not apply. A single SSC cannot deliver redundant functions.

Any nonconformance with a GDC incorporated in the licensing basis by which the capability of an SSC to withstand a single failure is compromised should be treated as a degraded or nonconforming condition. As with any degraded or nonconforming condition, the technical guidance in this document is applicable.



### C.03 Treatment of Consequential Failures in Operability Determinations

A consequential failure is a failure of an SSC caused by a postulated accident within the design basis. For example, if during a loss-of-coolant accident (a design basis event) a broken pipe whips and incapacitates a pump such that it cannot function; such a pump failure is called a consequential failure because the pump fails as a result of the design basis event itself. In general, facility design takes into consideration any consequential failures that are deemed credible. In this case, the broken pump cannot be credited in the safety analysis for loss of coolant accident mitigation.

When an SSC is found to be degraded or nonconforming, the operability determination should assess credible consequential failures previously considered in the design (i.e., the SSC failures that are the direct consequence of a design basis event for which the degraded or nonconforming SSC needs to function). Where a consequential failure (i.e., considering the degraded or nonconforming condition) would cause the loss of a specified safety function, the affected SSC is inoperable. Such situations are most likely discovered during design basis reconstitution studies, or when new credible failure modes are identified.

### C.04 Use of Alternative Analytical Methods in Operability Determinations

When performing operability determinations, licensees sometimes use analytical methods or computer codes different from those originally used in the calculations supporting the plant design. This practice involves applying “engineering judgment” to determine if an SSC remains capable of performing its specified safety function during the corrective action period. The use of alternative methods is not subject to 10 CFR 50.59 unless the methods are used in the final corrective action. Section 50.59 is applicable upon implementation of the corrective action.

Although the use of alternative and normally more recent methods or computer codes may raise complex plant-specific issues, their use may be useful and acceptable in operability determinations. Therefore, the inspector should consult with the region and NRR when reviewing such determinations. The use of alternative methods should generally be handled as follows:

- a. Occasionally, a regulation or license condition may specify the name of the analytic method for a particular application. In such instances, the application of the alternative analysis must be consistent with the TS, license condition, or regulation. For example, the methods used to determine limits placed in the core operating limits report (COLR) may be specified in TS. An evaluation of an SSC performance capability may be determined with a non-COLR method, but the limits in the COLR must continue to comply with the technical specification.
- b. The use of any analytical method must be technically appropriate to characterize the SSCs involved, the nature of the degraded or nonconforming condition, and specific facility design. General considerations for establishing this adequacy include:



- (1) If the analytic method in question is described in the CLB, the licensee should evaluate the situation-specific application of this method, including the differences between the CLB-described analyses and the proposed application in support of the operability determination process.
- (2) Utilizing a new method because it has been approved for use at a similar facility does not alone constitute adequate justification.
- (3) The method should produce results consistent with the applicable acceptance criteria in the CLB. For example, if the current performance levels are expressed in terms of Rem, the method cannot generate results expressed in TEDE.
- (4) If the analytic method is not currently described in the CLB, the models employed must be capable of properly characterizing the SSC's performance. This includes modeling of the effect of the degraded or nonconforming condition.
- (5) Acceptable alternative methods such as the use of "best estimate" codes, methods, and techniques. In these cases, the evaluation should ensure that the SSC's performance is not over-predicted by performing a benchmark comparison of the non-CLB analysis methods to the applicable CLB analysis methods.
- (6) The use of the software should be controlled in accordance with the licensee's quality assurance program, as applicable. This includes the availability of reviewers qualified to verify results.

#### C.05 Use of Temporary Manual Action in Place of Automatic Action in Support of Operability

Automatic action is frequently provided as a design feature specific to each SSC to ensure that specified safety functions will be accomplished. Limiting safety system settings for nuclear reactors are defined in 10 CFR Part 50.36, "Technical Specifications," as settings for automatic protective devices related to those variables having significant safety functions. Where a limiting safety system setting is specified for a variable on which a safety limit has been placed, the setting must be so chosen that automatic protective action will correct the abnormal situation before a safety limit is exceeded. Accordingly, it is not appropriate to consider SSCs operable by taking credit for manual action in place of automatic action for protection of safety limits. This does not forbid operator action to put the plant in a safe condition, but operator action cannot be a substitute for automatic safety limit protection. Refer to compensatory measures discussion in Section 07.03.

Credit for manual initiation of a specified safety function should be established as part of the licensing review of a facility. Although the licensing of specific facility designs includes consideration of automatic and manual action in the performance of specified safety functions, not all combinations of circumstances have been reviewed from an operability standpoint.

For situations where substitution of manual action for automatic action is proposed for an operability determination, the evaluation of manual action must focus on the physical differences

between automatic and manual action and the ability of the manual action to accomplish the specified safety function or functions. The physical differences to be considered include the ability to recognize input signals for action, ready access to or recognition of setpoints, design nuances that may complicate subsequent manual operation (such as auto-reset, repositioning on temperature or pressure), timing required for automatic action, minimum staffing requirements, and emergency operating procedures written for the automatic mode of operation. The licensee should have written procedures in place and personnel should be trained on the procedures before any manual action is substituted for the loss of an automatic action.

The assignment of a dedicated operator for a manual action requires written procedures and full consideration of all pertinent differences. The consideration of a manual action in remote areas must include the abilities of the assigned personnel and how much time is needed to reach the area, training of personnel to accomplish the task, and occupational hazards such as radiation, temperature, chemical, sound, or visibility hazards. One reasonable test of the reliability and effectiveness of a manual action may be the approval of the manual action for the same function at a similar facility. Nevertheless, a manual action is expected to be a temporary measure and to promptly end when the automatic action is corrected in accordance with 10 CFR Part 50, Appendix B, and the licensee's corrective action program.

#### C.06 Use of Probabilistic Risk Assessment in Operability Decisions

Probabilistic risk assessment is a valuable tool for evaluating accident scenarios because it can consider the probabilities of occurrence of accidents or external events. Nevertheless, the definition of operability is that the SSC must be capable of performing its specified safety function or functions, which inherently assumes that the event occurs and that the safety function or functions can be performed. Therefore, the use of PRA or probabilities of occurrence of accidents or external events is not consistent with the assumption that the event occurs, and is not acceptable for making operability decisions. Refer to timing of operability determinations in Section 04.06.

However, PRA may provide valid and useful supporting information on the timeliness of a prompt operability decision and a corrective action. PRA is also useful for determining the safety significance of SSCs. The safety significance, whether determined by PRA or other analyses, is a factor in making decisions about the timeliness of operability determinations.

#### C.07 Use of Seismic Margin Assessment in Operability Decisions

Seismic Margin Assessment (SMA) methodologies have been used to demonstrate that seismic margin exists for ground motion levels above the safe shutdown earthquake (SSE). These analyses have been used for beyond design basis calculations; however, the SME approach may be appropriate for demonstrating operability on a temporary basis until compliance with the licensing basis is achieved. If an SMA is used, the seismic demand shall be the recently developed Ground Motion Response Spectra (GMRS) for the Fukushima 2.1 seismic evaluation, and its application shall be consistent with EPRI NP-6041-SL.

## C.08 Environmental Qualification

When a licensee identifies a degraded or nonconforming condition that affects compliance with 10 CFR 50.49, (i.e., a licensee does not have an adequate basis to establish qualification), the licensee is expected to apply the guidance of this manual chapter. The licensee may use the criteria of Section 04.04 to establish a reasonable expectation that SSCs will perform their specified safety functions. In this connection, it must also be shown that subsequent failure of the equipment, if likely under accident conditions, will not result in a consequential failure as discussed in Section C.03.

## C.09 Technical Specification Operability vs. ASME OM Code Criteria

The TS normally applies to the overall performance of plant systems, but sometimes contains limiting values for the performance of certain components. The limiting values are specified to ensure that the design basis and safety analysis are satisfied. The values (e.g., pump flow rate, valve closure time, valve leakage rate, safety/relief valve set point pressure) are criteria that can be used to verify operability. If the values are not met at any time, the system must be declared inoperable, the LCO must be declared not met, and the applicable conditions must be entered.

The ASME Operation and Maintenance of Nuclear Power Plants (OM) Code establishes the requirements for preservice and inservice testing and the examination of certain components to assess their operational readiness. ASME OM Code acceptance criteria for inservice testing (IST) include “required action ranges” or limiting values for certain component performance parameters. These required action ranges or limiting values, defined by the ASME OM Code as component performance parameters, may be more limiting than the TS values (which are accident analysis limits). Position 8 in Attachment 1 to Generic Letter 89-04, “Guidance on Developing Acceptable Inservice Testing Programs,” defines the starting point for the completion time in TS actions for ASME pump and valve testing. When performance data fall outside the required action range, regardless of whether the limit is equal to the TS limit or more restrictive, the pump or valve must be declared inoperable immediately (the word “inoperative” is used in the text of the ASME Code, i.e., the pump or valve is both “inoperative” and inoperable) and the LCO must be declared not met and the applicable conditions must be entered.

When the required action range is more limiting than its corresponding TS, the corrective action need not be limited to replacement or repair; it could be an analysis to demonstrate that the specific performance degradation does not impair operability and that the pump or valve will still fulfill its specified safety function(s), such as delivering the required flow. A new required action range may be established after such analysis, allowing a new operability determination.

The NRC does not accept durations specified by the ASME OM Code for analyzing test results as a reason for postponing entry into a TS action statement. As soon as data are recognized as being within the required action range for pumps or as exceeding the limiting-value full-stroke time for valves, the associated component must be declared inoperable, and if subject to the TS, the completion time specified in the action statement must be started at the time the component was declared inoperable. For inoperable pumps and valves that are part of an

ASME IST program but not subject to TS, the action should be consistent with the safety significance of the issue and the functions served by the affected system or systems.

Recalibrating test instruments and then repeating pump or valve tests are acceptable as an alternative to repair or replacement, but cannot be done before declaring the pump or valve inoperable. However, if during a test it is obvious that a test instrument is malfunctioning, the test may be halted and the instruments promptly recalibrated or replaced. During a test, anomalous data with no clear indication of the cause must be attributed to the pump or valve under test. In that case, a prompt determination of operability is appropriate with follow-on corrective action as necessary.

#### | C.10 Support System Operability

The definition of operability assumes that an SSC described in TS can perform its specified safety function when all necessary support systems are capable of performing their related support functions. Each licensee must understand which support systems are necessary to ensure operability of supported TS systems. In some cases, the licensee could use “engineering judgment” in determining whether a support system that is not described in TS is necessary and is, therefore, required to be capable of performing its related support function. The licensee may need to apply engineering principals in the final analysis of the basis for the decision. For example, a ventilation system may be required in the summer to ensure that SSCs can perform their specified safety functions, but may not be required in the winter. Similarly, the electrical power supply for heat tracing may be required in the winter to ensure that SSCs can perform their specified safety functions, but may not be required in the summer. In all such cases, the licensee should periodically review the basis for determining that a support system is not required to ensure (a) that the conclusion remains valid, and (b) that there is timely restoration of the support system (the review may be done as part of the corrective action program). As an alternative to restoration, the licensee may modify the support function (as it would make any other change to the facility) by following the 10 CFR 50.59 change process and updating the UFSAR.

Upon discovery of a support system that is not capable of performing its related support function(s), the most important consideration is the possibility of having lost all capability to perform a specified safety function. Upon declaring a support or supported system inoperable in one train, the required actions in the TS should be implemented. The licensee must verify that the facility has not lost the complete capability to perform the specified safety function. The word “verify” as used here, covers examining logs or other information to determine if required features are out of service for maintenance or other reasons. The TS may contain specific requirements or allowances regarding support systems. In all cases, a licensee’s plant-specific TS is governing.

#### | C.11 Piping and Pipe Support Requirements

Piping and pipe supports found to be degraded or nonconforming and that support SSCs described in TS should be subject to an operability determination. The following criteria are provided to address various components, including piping, supports, support plates, and anchor

bolts. Inspection and Enforcement (IE) Bulletin 79-14, "Seismic Analyses for As-Built Safety-Related Piping Systems," including Supplements 1 and 2, provides additional guidance. SQUG GIP-2 also provides acceptable criteria that can be used to confirm operability of mechanical component anchorages consistent with design basis loadings. RG 1.199, "Anchoring Components and Structural Supports in Concrete", November 2003 which endorses American Concrete Institute (ACI) 349, "Code Requirements for Nuclear Safety Related Concrete Structures," 2001 provides acceptance criteria for evaluation of nonconforming or degraded anchors (steel embedments).

Specific operability criteria for concrete anchor bolts and pipe supports are given in IE Bulletin 79-02, "Pipe Support Base Plate Designs Using Concrete Expansion Anchor Bolts" (see Revision 1, Supplement 1, and Revision 2). The criteria for evaluating the operability of seismic design piping supports and anchor bolts relating to Bulletins 79-02 and 79-14 are described in NRC memo dated July 16, 1979 (ADAMS Accession No. ML 993430206). When a degradation or nonconformance associated with piping or pipe supports is discovered, the licensee may use the criteria in Appendix F of Section III of the ASME Boiler and Pressure Vessel Code for operability determinations. The licensee may use these criteria until compliance with CLB criteria can be satisfied (normally the next refueling outage). For SSCs that do not meet the criteria specified within this paragraph (IE Bulletins 79-02, 79-14, GIP-2 and Appendix F) but are otherwise determined to be operable by other methods or criteria, licensees should treat the SSCs as if inoperable until NRC approval is obtained. Licensees may perform inelastic analysis of an affected piping system using strain limits; however, NRC approval is necessary before the component is declared operable. Where a piping support is determined to be inoperable, the licensee should determine the operability of the associated piping system.

## C.12 Flaw Evaluation

In accordance with Title 10 of the Code of Federal Regulations (10 CFR) 50.55a(g), structural integrity must be maintained in conformance with American Society of Mechanical Engineers (ASME) Code Section XI for those parts of a system that are subject to ASME Code requirements. 10 CFR 50.55a(g)(4) further requires, "Throughout the service life of a boiling or pressurized water-cooled nuclear power facility, components (including supports) which are classified as ASME Code Class 1, Class 2, and Class 3 must meet the requirements, except design and access provisions and preservice examination requirements, set forth in Section XI..."

ASME Section XI is generally written for preservice and inservice weld examinations and any identified flaws. ASME Section XI, Article IWA 3000 contains weld examination flaw acceptance standards. If flaws are found in components for which ASME Section XI has no acceptance standards, then the construction code is to be used to establish the acceptance standards. This is supported by Sub-article IWA-3100(b) which states "If acceptance standards for a particular component, Examination Category, or examination method are not specified in this Division [Division 1] then flaws that exceed the acceptance standards for materials and welds specified in the Section III Edition applicable to the construction of the component shall be evaluated to determine disposition."



The ASME Code contains requirements describing acceptable means of performing preservice and inservice inspection of welds and certain other locations in piping, vessels, and other pressure boundary components. For preservice and inservice inspections, the ASME Code also specifies acceptable flaw sizes based on the material type, location, and service of the system within which the flaw is discovered. If the flaw exceeds these specified acceptable flaw sizes, the ASME Code describes an alternate method by which a calculation may be performed to evaluate the acceptability of the flaw. While ASME Section XI does not specifically provide flaw acceptance standards for components other than those specified in Table IWX-2500-1, its methods and standards may be applied to other components when appropriate as determined by the licensee.

When ASME Class 1 components do not meet ASME Code or construction code acceptance standards, the requirements of an NRC endorsed ASME Code Case, or an NRC approved alternative, then an immediate operability determination cannot conclude a reasonable expectation of operability exists and the components are inoperable. Satisfaction of Code acceptance standards is the minimum necessary for operability of Class 1 pressure boundary components because of the importance of the safety function being performed.

When ASME Class 2 or Class 3 components do not meet ASME Code or construction code acceptance standards, the requirements of an NRC endorsed ASME Code Case, or an NRC approved alternative, then a licensee must make a determination of whether the degraded or nonconforming condition results in a TS-required SSC or a TS-required support SCC being inoperable. In order to determine if the component is operable under an immediate operability determination, the degradation mechanism must be readily apparent. To be readily apparent, the degradation mechanism must be discernible from visual examination (such as external corrosion or wear), or there must be substantial operating experience with the identified degradation mechanism in the affected system. In addition, detailed non-destructive examination data may be necessary to determine a component is operable under an immediate operability determination. If detailed non-destructive examination is necessary and the examination cannot be completed within the time frame normally expected for an immediate operability determination, the component should be declared inoperable and the appropriate TS action statement entered. As outlined under defined terms, Section 03.09, Reasonable

Expectation, there is no indeterminate state of operability. An SSC is either operable or inoperable. Through-wall leakage and the methods to evaluate through-wall leakage are further addressed in Section C.13.

The NRC staff accepts ASME Code Case N-513<sup>7</sup>, "Evaluation Criteria for Temporary Acceptance of Flaws in Moderate Energy Class 2 or 3 piping Section XI, Division 1" as an acceptable alternative to the ASME Code requirements for evaluating the structural integrity for flaws identified in moderate-energy piping. Regulatory Guide (RG) 1.147, "Inservice Inspection Code Case Acceptability, ASME Section XI, Division 1" endorses code cases, some with conditions. Refer to RG 1.147 for the latest revision accepted by the NRC. At the time of this writing, RG 1.147 endorses Code Case N-513<sup>7</sup> with the following conditions:

---

<sup>7</sup> Refer to RG 1.147 for the latest revision acceptable to the NRC, and any conditions placed upon the code.

- a. Specific safety factors in paragraph 4.0 of ASME Code Case N-513<sup>7</sup> must be satisfied, and
- b. ASME Code Case N-513<sup>7</sup> may not be applied to:
  - (1) components other than pipe and tubing,
  - (2) leakage through a gasket,
  - (3) threaded connections employing nonstructural seal welds for leakage prevention (through-seal weld leakage is not a structural flaw, but thread integrity must be maintained), and
  - (4) degraded socket welds.

In addition, the NRC issued Generic Letter (GL) 90-05, "Guidance for Performing Temporary Non-Code Repair of ASME Code Class 1, 2, and 3 Piping," which permits licensees to consider either the "through-wall flaw" or the "wall thinning" flaw evaluation approach when assessing the structural integrity of moderate- energy piping with identified through-wall flaws. If the flaw is found acceptable by the "through-wall flaw" approach, a temporary non-code repair may be made following NRC staff review and approval of the evaluation. A non-code repair is a repair not in compliance with the construction code or ASME Section XI. Compensatory actions may be implemented by the licensee without NRC staff review and approval, provided the compensatory action does not involve a non-code repair to the piping system or supports and the compensatory action can be implemented in accordance with 10 CFR50.59. If the flaw is found acceptable by the "wall thinning" approach, immediate repair of the flaw is not required; but the licensee should comply with the guideline for flaw repair and monitoring. Whenever a flaw does not meet ASME Code or construction code acceptance standards or the requirements of an NRC endorsed ASME code case, a relief request is required. Whenever a flaw does not meet ASME Code or construction code acceptance standards or the requirements of an NRC endorsed ASME code case, a relief request needs to be submitted in a timely manner after completing the operability determination process documentation.

The NRC staff accepts the ASME Code, construction code, GL 90-05, ASME Code Case N 5131, and any other applicable NRC-approved ASME Code Case criteria for conclusively establishing that a TS required ASME Code Class 2 or 3 piping system that contains a flaw has adequate structural integrity and is, therefore in a degraded but operable condition. ASME Code Cases which describe methods, criteria, or requirements different from the ASME Code referenced in 10 CFR 50.55a cannot be used to evaluate the acceptability of a flaw without prior NRC review and approval unless the ASME Code Cases are endorsed in the applicable regulatory guides.

Therefore, the table below summarizes the methods available to licensees who are acceptable to the NRC staff for evaluating structural integrity of flaws found in boiling or pressurized water-cooled nuclear power facilities on components (including supports) classified as ASME Code Class 1, Class 2, and Class 3 components.

Methods Available to Evaluate Structural Integrity

Pipe Class/Energy	ASME Code Section XI/ Construction Code	NRC Approved Alternative e.g. RG approved Code Case	Code Case N-513 <sup>1</sup>	GL 90-05
Class 1/HE	X	X		
Class 2/HE	X	X		
Class 2/ME	X	X	X	
Class 3/HE	X	X		X
Class 3/ME	X	X	X	X

Once a flaw is determined to be unacceptable, regardless of whether the degraded component is degraded but operable, or inoperable, the component must be restored to meet ASME Code or construction code requirements, requirements of an NRC endorsed ASME Code Case, or an NRC approved alternative. If this involves physical changes to the components, it must be completed in accordance with ASME Section XI, IWA-4000. The NRC staff expects that components be restored to ASME Code or construction code acceptance standards by the end of the next refueling outage.

**C.13** Operational Leakage from ASME Code Class 1, 2, and 3 Components

Leakage from the reactor coolant system is limited to specified values in the TS depending on whether the leakage is from identified, unidentified, or specified sources such as the steam generator tubes or reactor coolant system pressure isolation valves. If the leakage exceeds TS limits, the limiting condition for operation (LCO) must be declared not met and the applicable TS conditions must be entered. For identified reactor coolant system leakage within the TS limits, the licensee should make an immediate operability determination for the degraded component (i.e., the leaking component) and include in the determination the effects of the leakage on other components and materials.

The regulations require that the structural integrity of ASME Code Class 1, 2, and 3 components be maintained in accordance with the ASME Code or construction code acceptance standards. If a leak is discovered in a Class 1, 2, or 3 component while conducting an inservice inspection, maintenance activity, or during facility operation, any corrective measures to repair or replace the leaking component must be performed in accordance with IWA-4000 of Section XI. The NRC staff expects that components be restored to ASME Code or construction code acceptance standards by the end of the next refueling outage.

The operational leakage TS LCO does not permit any reactor coolant pressure boundary leakage. Upon discovery of leakage from a Class 1 pressure boundary component (pipe wall, valve body, pump casing, etc.), the licensee must declare the component inoperable. Upon discovery of leakage from a TS-required Class 2 or Class 3 component (“Time of Discovery” for Performance Indicator and risk/PRA evaluations), the component is evaluated in an immediate determination of operability (followed by a prompt determination if additional or supporting analysis is needed) to support a reasonable expectation of operability. In performing the immediate determination, the degradation mechanism would have to be readily apparent to support a determination of operable. To be readily apparent, the degradation mechanism must be discernible from visual



inspection (such as external corrosion or wear) or substantial operating experience must exist with the degradation mechanism on the system at the facility. In addition, detailed non-destructive examination data may be necessary to support an immediate expectation of operability determination. If detailed non-destructive examination is necessary and the examination cannot be completed within the time frame normally expected for an immediate operability determination, the component should be declared inoperable and the appropriate TS required actions taken. As outlined under defined terms, Section 03.09, Reasonable Expectation, there is no such thing as an indeterminate state of operability; an SSC is either operable or inoperable. GL 90-05 provides guidance for the evaluation of Class 3 piping and ASME Code Case N-513<sup>8</sup> provides guidance for the evaluation of Class 2 and Class 3 moderate energy piping. As noted above, upon discovery of leakage from a TS-required Class 2 or a Class 3 pressure boundary component a prompt operability determination supporting analysis to characterize the flaw may be needed. In performing the prompt operability determination, the licensee must evaluate the structural integrity of the leaking component using the actual geometry of the through-wall flaw characterized or bounded with volumetric examination methods. It may be possible to use visual methods to determine the exterior dimension(s) and orientation of a through-wall flaw in a leaking component. However, even though the outside surface breaking dimension of a through-wall flaw may be small, the length and extent of the flaw inside the component wall may be quite long and potentially result in inadequate structural integrity of the component.

To evaluate the structural integrity of the leaking component, the licensee may use the criteria in Section XI of the ASME Code, the construction code, or any applicable ASME Code Case approved by the NRC. In addition, the licensee may evaluate the structural integrity of Class 3 piping by evaluating the flaw using the criteria of paragraph C.3.a of Enclosure 1 to GL 90-05. If the flaw meets the GL 90-05 criteria, the piping is degraded but operable. However, relief from ASME Code requirements is needed even if the structural integrity is found acceptable when applying GL 90-05. Whenever a flaw is through-wall in an ASME Code component when evaluated using GL 90-05, a relief request needs to be submitted in a timely manner after completing the operability determination process documentation and prior to implementing a non-code repair/replacement activity to the SSC.

Alternatively, the licensee may evaluate the structural integrity of leaking Class 2 or Class 3 moderate-energy piping using the criteria of ASME Code Case N-513<sup>1</sup> or any other applicable NRC approved ASME Code Case, as indicated in the table in Appendix C.12, "Flaw Evaluation." If the flaw in the leaking component has adequate structural integrity in accordance with criteria of an ASME Code Case acceptable to the NRC staff, the piping can be deemed degraded but operable and continued temporary service of the degraded piping components is permitted. A relief request is not necessary when evaluated in accordance with an NRC approved code case as endorsed by the code case regulatory guide, and the evaluation results demonstrate adequate structural integrity. Components with these flaws must be restored to ASME Code or construction code requirements through repair/replacement or meet requirements acceptable to the NRC, as approved in a relief request or ASME Code Case approved under the RGs prior to the completion of the next scheduled refueling outage. Other compensatory actions may be

---

<sup>8</sup> Refer to RG 1.147 for the latest revision acceptable to the NRC, and any conditions placed upon the code case

taken by the licensee, provided these compensatory actions are within the limitations of 10 CFR 50.59.

The NRC staff does not consider through-wall conditions in components, unless intentionally designed to be there such as sparger flow holes, to be in accordance with the intent of the ASME Code or construction code and, therefore, would not meet code requirements, even though the system or component may demonstrate adequate structural integrity. Thus, unless a through-wall flaw is evaluated and found acceptable using an applicable and NRC endorsed code case, in which all provisions are met including any additional requirements or limitations imposed by the RG endorsing the code case, a relief request is necessary.

Once a component is evaluated for structural integrity using criteria acceptable to the NRC staff as described herein, and determined to be unacceptable, the component has to be declared inoperable and the TS action statements for the applicable system must be followed.

If the licensee decides to control the leakage and maintain structural integrity by mechanical clamping means, the requirements of ASME Code Case N-523<sup>9</sup>, "Mechanical Clamping Devices for Class 2 and 3 Piping Section XI, Division 1," may be followed, because the NRC staff endorses this Code Case in Regulatory Guide 1.147, "Inservice Inspection Code Case Acceptability, ASME Section XI, Division 1". This Code Case applies to structural integrity of Class 2 and 3 piping which is 6 inches (nominal pipe size) and smaller and shall not be used on piping larger than 2 inches (nominal pipe size) when the nominal operating temperature or pressure exceeds 200°F or 275 psig. These and other applicable ASME Code Cases which have been determined to be acceptable for licensee use without a request or authorization from the NRC are listed in RG 1.147 for ASME Section XI and RG 1.84, "Design, Fabrication, and Materials Code Case Acceptability, ASME Section III," for ASME Section III. These ASME Code Cases do not apply to Class 1 pressure boundary components.

The NRC has no specific guidance or generically approved alternatives for temporary repair of flaws (through-wall or non-through-wall) in system pressure boundary components other than piping in Class 1, 2, or 3 high-energy system components, or for Class 2 or 3 moderate-energy system components. Therefore, all such flaws in these components must be repaired in accordance with ASME Code requirements, or relief from ASME Code requirements must be requested of and approval obtained from the NRC.

#### C.14 Structural Requirements

Structures may be required to be operable by the TS, or they may be **providing** related support functions for SSCs in the TS. Examples of structural degradation are concrete cracking and spalling, excessive deflection or deformation, water leakage, rebar corrosion, **cracked welds**, missing or bent anchor bolts **or structural bolting**, and degradation of door and penetration sealing. If a structure is degraded, the licensee should assess the capability of the structure to perform its safety function.

For structures and related support functions, operability determinations need to include applicable design and licensing basis loads and load combinations. When a degradation or nonconformance associated with a structure is discovered, an operability determination should demonstrate that a reasonable expectation of operability exists for meeting acceptance limits for expected load combinations. Unless adequately justified in the operability evaluation, design basis load factors should be used for all applicable load combinations.

Physical degradation such as concrete cracking and spalling, excessive deflection or deformation of structures, water leakage, corrosion of rebar, cracked welds, corrosion of steel members, corrosion of anchor bolts, bent anchor bolt(s) or structural bolting of a structure or component may be evaluated in accordance with generally accepted industry standards and guidance documents. Where consensus standards or guidance documents are not consistent with the physical degradation (e.g., alkali-silica reaction (ASR)) the NRC inspector should consult with NRR staff.

Later versions of American Concrete Institute (ACI) 318, ACI-349, ACI-359, ASME Section III, Division 1 and Division 2, American National Standards Institute (ANSI) N-690, American Society of Civil Engineers (ASCE) /SEI 43-05, ASCE 4, or American Institute of Steel Construction (AISC) codes/standards may be used for operability/functionality evaluations, in lieu of the versions specified in the design basis documents, provided all additional requirements are met, as applicable. Additional codes/standards, recognized technical reports, or regulatory guidance may be used; however, the licensee must justify the use of additional codes/standards or guidance for the specific application.

Operability determinations may rely on as-built material properties when the properties of the materials are established based on test data and a sound statistical basis, for example:

- a. Structural steel yield and tensile strength from Certified Material Test Reports may be used in lieu of the specified minimum yield and tensile strength.
- b. Concrete compressive strength from cylinder tests may be used in lieu of the specified minimum design strength.

Operability determinations may apply current regulatory guidance to reduce design basis conservatism, if applicable. For example, damping values from Regulatory Guide 1.61, "Damping Values for Seismic Design of Nuclear Power Plants."

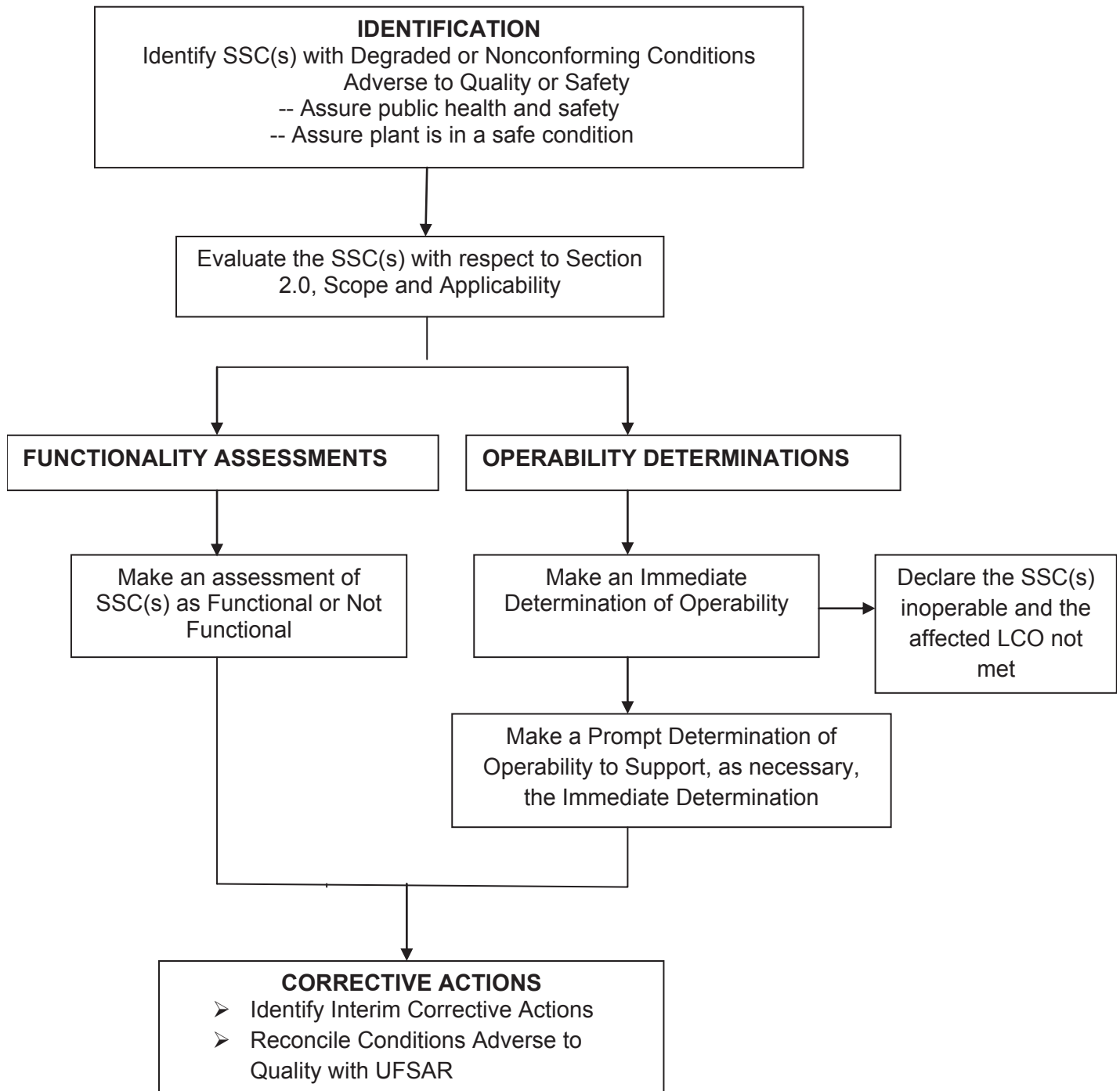
- a. Tornado and tornado missile characteristics from Regulatory Guide 1.76, "Design-Basis Tornado and Tornado Missiles for Nuclear Power Plants."

The NRR staff is available to support NRC inspector reviews of operability determinations and plant licensing bases as necessary.

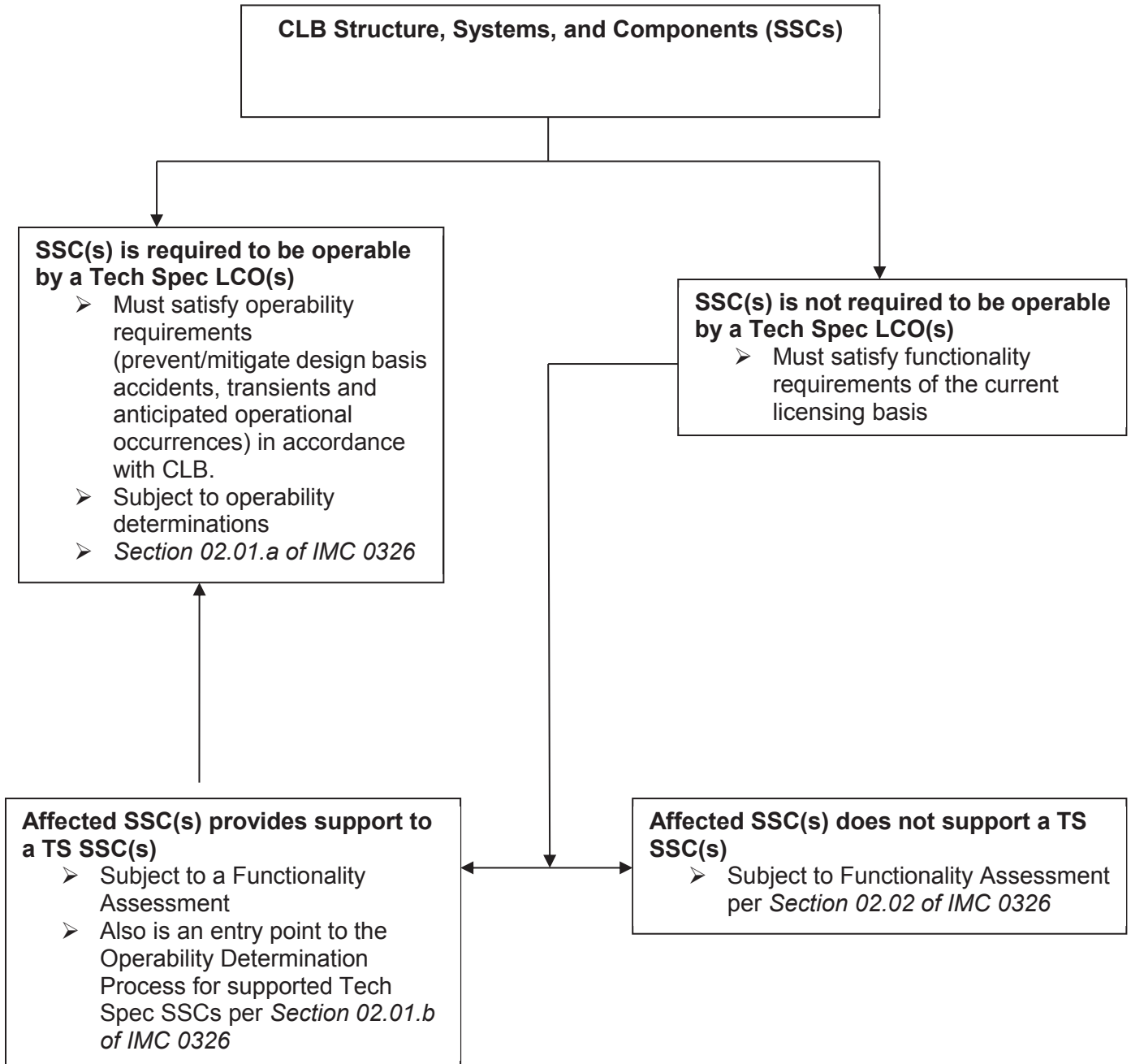
An operability evaluation that relies on methodology, modeling, or assumptions that are outside the licensing basis, implies a nonconforming condition that has to be addressed in a reasonably timely manner consistent with requirements in 10 CFR 50, Appendix B, Criterion XVI.

END

Attachment 1: Operability Determination and Functionality Assessment Flowchart



Attachment 2: Scope of an Operability Determination as it Relates to the Scope of a Functionality Assessment



Attachment 3 - Revision History for IMC 0326,  
 “Operability Determinations & Functionality Assessments for Conditions  
 Adverse to Quality or Safety”

Commitment Tracking Number	Accession Number Issue Date Change Notice	Description of Change	Description of Training Required and Completion Date	Comment and Feedback Resolution Accession Number (Pre-Decisional, Non-Public)
None	ML12345A578 01/31/14 CN 14-004	<p>TG Part 9900 Technical Guidance STSODP “Operability Determinations &amp; Functionality Assessments for Resolution of Degraded or Nonconforming Conditions Adverse to Quality or Safety” is updated and reissued as IMC 0326, “Operability Determinations &amp; Functionality Assessments For Conditions Adverse To Quality Or Safety.” The pertinent changes includes the following:</p> <ul style="list-style-type: none"> <li>• Scope of SSCs for Operability Determinations. The parenthetical reference to the support systems (<i>diesel fuel oil, lube oil and starting air</i>) in the guidance is replaced with Nuclear Service Water and Station Battery examples in a footnote. The footnote discussion states that all design functions may not be within the scope of an operability determination, but may be within the scope of a Functionality Assessment.</li> <li>• Definition <i>Functional</i> – <i>Functionality</i>. CLB function(s) of SSCs not controlled by TS may include the ability to perform a necessary and related support function for an SSC(s) controlled by TS. Definition <i>Operable/Operability</i>. Plant-specific operability definitions may refer to either “specified functions” or “specified safety functions” when describing the CLB of a structure, system or component and that these are descriptive terms that have the same meaning when used in operability determinations</li> </ul>	Incorporated into iLearn Operability Refresher Training	None

Commitment Tracking Number	Accession Number Issue Date Change Notice	Description of Change	Description of Training Required and Completion Date	Comment and Feedback Resolution Accession Number (Pre-Decisional, Non-Public)
		<p data-bbox="475 680 537 1535">• Definition <i>Specified Function/Specified Safety Function</i>. Refers to the “specified safety functions” in the facility CLB.</p> <p data-bbox="545 709 639 1535">• Operability Determination Process. “PRA functional” is used to calculate risk-informed Completion Times but the term does not apply to operability determinations.</p> <p data-bbox="647 659 807 1535">• Assessing Potential Degraded or Nonconforming Conditions. The time required should be limited to the time necessary to understand the known or expected extent of degradation or nonconforming condition and that an extended delay to complete an investigation or cause analysis is not appropriate.</p> <p data-bbox="815 659 943 1535">• Presumption of Operability. Includes performing TS surveillances to assure the necessary quality of systems and components is maintained, that facility operation will be within safety limits, and that the limiting conditions for operation will be met.</p> <p data-bbox="951 772 1146 1535">• Functionality Assessments. Functionality assessments are appropriate whenever a review, TS surveillance, or other information calls into question the ability of an SSC not required to be operable by TS to perform its CLB function(s). A CLB function(s) may also perform a necessary and related TS support function for a SSC controlled by TS.</p> <p data-bbox="1154 701 1183 1535">• Enforcement Discretion. Revised to be consistent with MC 0410.</p>		



Commitment Tracking Number	Accession Number Issue Date Change Notice	Description of Change	Description of Training Required and Completion Date	Comment and Feedback Resolution Accession Number (Pre-Decisional , Non-Public)
		<ul style="list-style-type: none"> <li>• Compensatory Measures. Used to restore inoperable SSCS to operable but degraded status should be documented in a prompt operability determination. Compensatory measures may include temporary facility or procedure changes that impact other aspects of the facility which may require applying the requirements of 10 CFR 50.59.</li> <li>• Missed Technical Specifications Surveillance. Revised to clarify use of SR 3.0.3 does not apply when a TS Surveillance has never been performed.</li> <li>• Relationship Between the General Design Criteria and the Technical Specifications. Revised to address recent staff licensing issues on the need to clarify the relation between TS and the GDC.</li> <li>• Single Failures. Revised to complete the list of applicable GDC and to clarify its language.</li> </ul>		



Commitment Tracking Number	Accession Number Issue Date Change Notice	Description of Change	Description of Training Required and Completion Date	Comment and Feedback Resolution Accession Number (Pre-Decisional, Non-Public)
None	ML15237A077 11/05/15 CN 15-023	<p>Added Appendix C.07 to allow the use of Seismic Margin Analyses</p> <p>Appendix C.13, "Structural Requirements" is revised to include reinforced concrete and steel structural components inspection acceptance criteria guidance for operability determinations and functionality assessments. This change is proposed by Reactor Oversight Program Feedback Form 9900 – 1794.</p> <p>This is an ERRATA to correct the inadvertent release of a previous version.</p>	None	ML15236A055 9900-1794 ML15308A230
	ML15328A099 12/03/15 CN 15-028	<p>This is an ERRATA to correct the inadvertent release of a previous version.</p>	None	ML15236A055 9900-1794 ML15308A230

