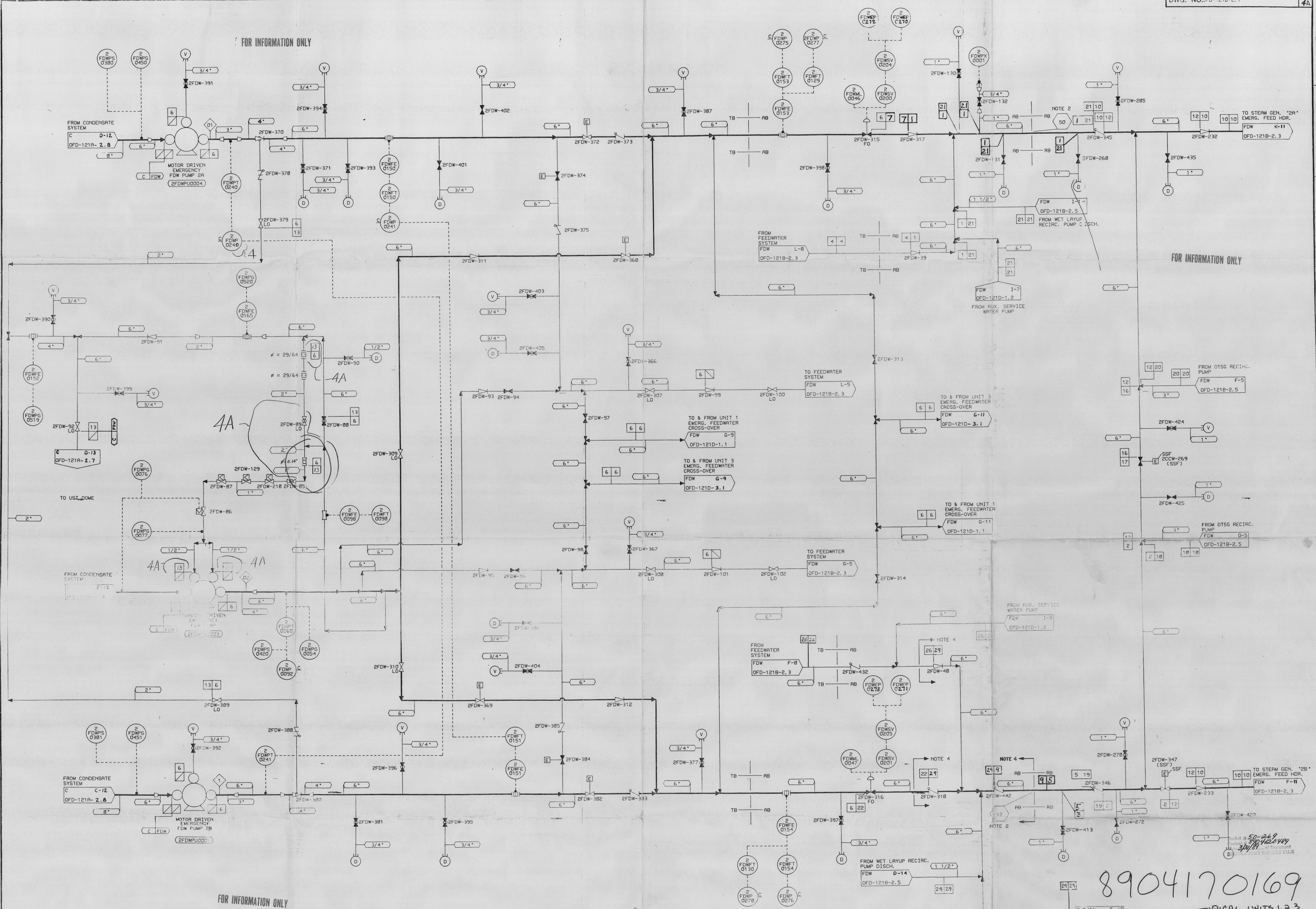


FOR INFORMATION ONLY

FOR INFORMATION ONLY



FOR INFORMATION ONLY

- NOTES**
- OPERATING MODE REPRESENTED BY BOLD LINES - EMERGENCY FEEDWATER TO STEAM GENERATORS. VALVE POSITIONS ARE FOR NORMAL PLANT OPERATION. FOR DETAIL OF TRANSITION, REFER TO O-1439C.
  - GUARD PIPE AND VALVE ENCLOSURE COMPONENTS TO PROVIDE SECURITY BOUNDARY.
  - 2 1/2" THRU 2" - SCH. 40
  - 2 1/2" THRU 6" - SCH. 80
  - 8" THRU 14" - SCH. 100
  - 1440 PSIG - 80°F
  - 1420 PSIG - 150°F
  - 1275 PSIG - 475°F
  - 1440 PSIG - 80°F
  - 1440 PSIG - 150°F
  - 1275 PSIG - 475°F
  - 1440 PSIG - 80°F
  - 1440 PSIG - 150°F
  - 1275 PSIG - 475°F
  - 1440 PSIG - 80°F
  - 1440 PSIG - 150°F
  - 1275 PSIG - 475°F
  - THE ORIGINAL ISSUE OF THIS DRAWING IS BASED ON PO-121D-2, REV. 6

LINE NO.	ISI CLASS	DESIGN PRESS.	DESIGN TEMP.	DUKE CLASS	MATERIAL	PIPE SPEC. NO.	PIPE SCH. NO.	NO.	FLOW
1	B	1050 PSIG	475°F	F	CS	600.4	1/2" THRU 24"-SCH. 80	1	500 GPM
2	C	NOTE 6	NOTE 6	F	CS	600.4	1/2" THRU 24"-SCH. 80	2	1080 GPM
3	B	NOTE 7	NOTE 7	F	CS	600.4	1/2" THRU 24"-SCH. 80		
4	C	1050 PSIG	475°F	F	CS	600.4	1/2" THRU 24"-SCH. 80		
5	C	NOTE 7	NOTE 7	F	CS	600.4	1/2" THRU 24"-SCH. 100		
6	C	1420 PSIG	150°F	F	CS	600.4	1/2" THRU 24"-SCH. 80		
7	C	1050 PSIG	150°F	F	CS	600.4	1/2" THRU 24"-SCH. 100		
8	C	NOTE 7	NOTE 7	F	CS	600.4	1/2" THRU 24"-SCH. 80		
9	C	NOTE 7	NOTE 7	F	CS	600.4	1/2" THRU 24"-SCH. 100		
10	C	1050 PSIG	600°F	F	CS	600.4	1/2" THRU 24"-SCH. 80		
11	C	1050 PSIG	600°F	F	CS	600.4	1/2" THRU 24"-SCH. 80		
12	C	1420 PSIG	150°F	F	CS	600.4	1/2" THRU 24"-SCH. 80		
13	C	1050 PSIG	150°F	F	CS	600.4	1/2" THRU 24"-SCH. 80		
14	C	1440 PSIG	80°F	F	CS	900.1	NOTE 5		
15	C	1050 PSIG	600°F	F	CS	900.1	NOTE 5		
16	C	NOTE 6	NOTE 6	F	CS	900.1	NOTE 5		
17	C	NOTE 6	NOTE 6	F	CS	900.1	NOTE 5		
18	C	NOTE 6	NOTE 6	F	CS	600.5	1/2" THRU 24"-SCH. 80		
19	B	NOTE 6	NOTE 6	F	CS	600.4	1/2" THRU 24"-SCH. 80		
20	C	1050 PSIG	600°F	F	CS	600.4	1/2" THRU 24"-SCH. 80		
21	C	1050 PSIG	475°F	F	CS	600.4	1/2" THRU 24"-SCH. 80		
22	C	NOTE 8	NOTE 8	F	CS	600.4	1/2" THRU 24"-SCH. 80		
23	C	NOTE 9	NOTE 9	F	CS	600.4	1/2" THRU 24"-SCH. 80		
24	C	NOTE 9	NOTE 9	F	CS	600.4	1/2" THRU 24"-SCH. 80		
25	C	NOTE 7	NOTE 7	F	CS	600.4	1/2" THRU 24"-SCH. 160		

SI APERTURE CARD FOR INFORMATION ONLY

SSF RELATED Q.R. CONDITION 1

DUKE POWER COMPANY  
OGONEE NUCLEAR STATION 2

FLOW DIAGRAM OF EMERGENCY FEEDWATER SYSTEM

NO.	REVISIONS	DWN.	CHKD.	DATE	APPR.	DATE	CIVIL	ELEC.	MECH.	INSPECTED	SCALE	DWG. NO.	REV.
1	REV. PER NEM-22-240-100, IMP.											OFD-121D-2.1	4A
2	ISSUED CORR. COORD. & REMOVED DOUBLE FLANGE FROM												
3	REMOVED LINE W/ VALVE (K-3)												
4	REMOVED LINE W/ VALVE (K-3)												
5	REMOVED LINE W/ VALVE (K-3)												
6	REMOVED LINE W/ VALVE (K-3)												
7	REMOVED LINE W/ VALVE (K-3)												
8	REMOVED LINE W/ VALVE (K-3)												
9	REMOVED LINE W/ VALVE (K-3)												
10	REMOVED LINE W/ VALVE (K-3)												
11	REMOVED LINE W/ VALVE (K-3)												
12	REMOVED LINE W/ VALVE (K-3)												
13	REMOVED LINE W/ VALVE (K-3)												
14	REMOVED LINE W/ VALVE (K-3)												
15	REMOVED LINE W/ VALVE (K-3)												
16	REMOVED LINE W/ VALVE (K-3)												
17	REMOVED LINE W/ VALVE (K-3)												
18	REMOVED LINE W/ VALVE (K-3)												
19	REMOVED LINE W/ VALVE (K-3)												
20	REMOVED LINE W/ VALVE (K-3)												
21	REMOVED LINE W/ VALVE (K-3)												
22	REMOVED LINE W/ VALVE (K-3)												
23	REMOVED LINE W/ VALVE (K-3)												
24	REMOVED LINE W/ VALVE (K-3)												
25	REMOVED LINE W/ VALVE (K-3)												
26	REMOVED LINE W/ VALVE (K-3)												
27	REMOVED LINE W/ VALVE (K-3)												
28	REMOVED LINE W/ VALVE (K-3)												
29	REMOVED LINE W/ VALVE (K-3)												
30	REMOVED LINE W/ VALVE (K-3)												

8904170169

CCW G-12  
OFD-121A-2.5  
FROM SSF  
AUX. SERV. WTR.

Revised Per NEM-22-240-100  
Provision Date:  
Implementation Date:

This is a limited edition print and shall not be used as a permanent record.

# PROPRIETARY INFORMATION

Docket # \_\_\_\_\_  
Control # \_\_\_\_\_  
Date \_\_\_\_\_  
\_\_\_\_\_ of Document # \_\_\_\_\_  
REGULATORY DOCKET FILE

## NOTICE

THE ATTACHED DOCUMENT MAY CONTAIN "PROPRIETARY INFORMATION" AND SHOULD BE HANDLED AS NRC "OFFICIAL USE ONLY" INFORMATION. IT SHOULD NOT BE DISCUSSED OR MADE AVAILABLE TO ANY PERSON NOT REQUIRING SUCH INFORMATION IN THE CONDUCT OF OFFICIAL BUSINESS AND SHOULD BE STORED, TRANSFERRED, AND DISPOSED OF BY EACH RECIPIENT IN A MANNER WHICH WILL ASSURE THAT ITS CONTENTS ARE NOT MADE AVAILABLE TO UNAUTHORIZED PERSONS.

COPY NO. \_\_\_\_\_

DOCKET NO. \_\_\_\_\_

CONTROL NO. \_\_\_\_\_

REPORT NO. \_\_\_\_\_

REC'D W/LTR DTD. \_\_\_\_\_

# PROPRIETARY INFORMATION