

Revised Pages For Topical Report DPC-NE-2005P

The bar in the right hand margin notes revised lines.

9408090448 940601
PDR ADOCK 05000269
P PDR

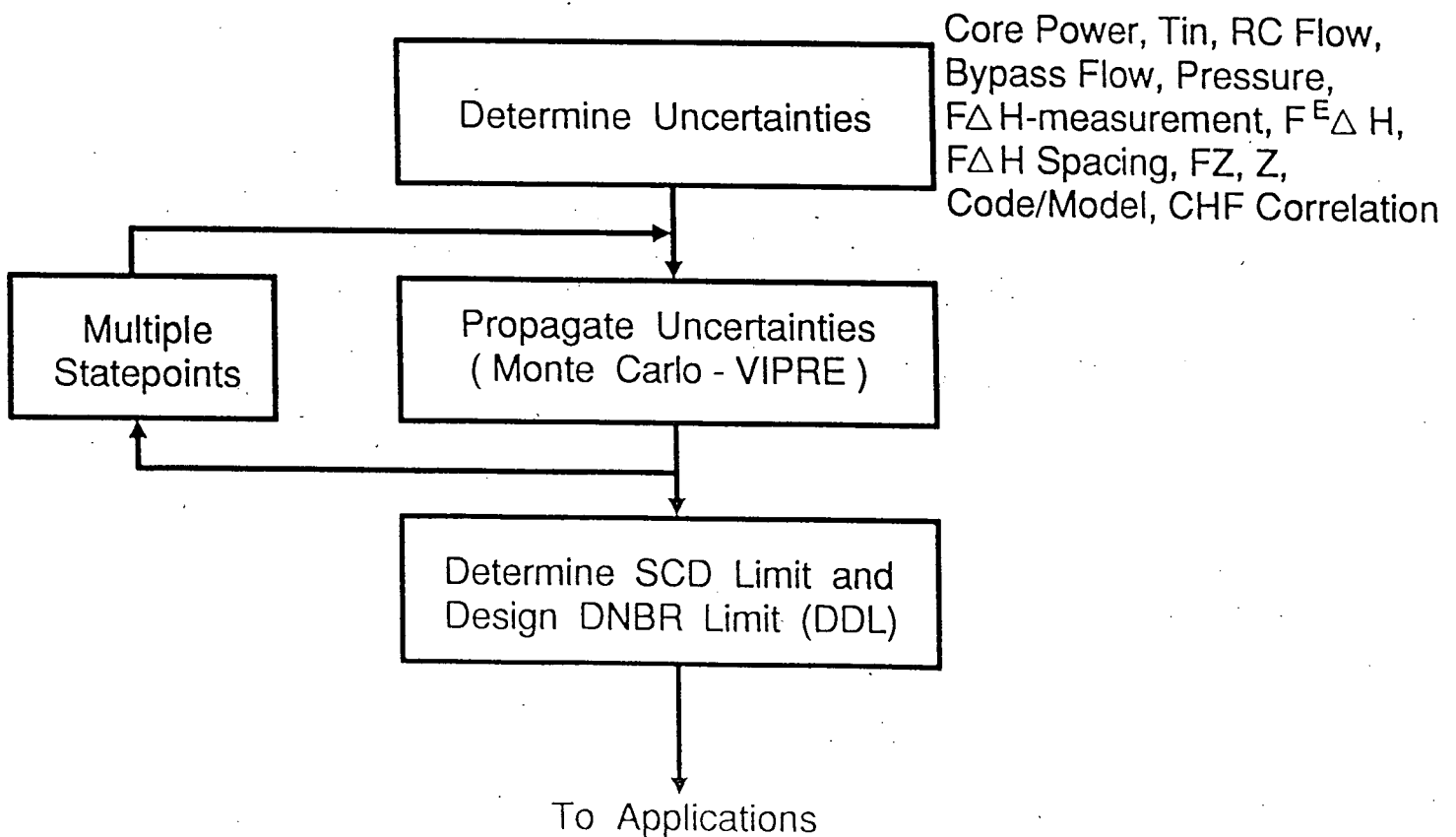
TABLE 7. SDL Evaluation And Re-Submittal Criteria

The following table lists different events or conditions that would require an evaluation of the applicability of an approved SDL and the subsequent actions based on the results of the analysis.

<u>CONDITION</u>	<u>ACTION</u>
Revised uncertainty larger than the limiting value used in the original analysis.	SDL \leq Limit, No Action. SDL $>$ Limit, Specifically compensate.
Revised uncertainty distribution.	SDL \leq Limit, No Action. SDL $>$ Limit, Specifically compensate.
New statepoint.	SDL \leq Limit, No Action. SDL $>$ Limit, Specifically compensate.
Minor modifications to the current fuel design.	SDL \leq Limit, No Action. SDL $>$ Limit, Specifically compensate.
A modified CHF correlation.	SDL \leq Limit, No Action. SDL $>$ Limit, Specifically compensate.
Change to a new fuel design/fuel type.	Evaluate, submit a new Appendix for NRC approval regardless of SDL values.
A new CHF correlation.	Evaluate, submit a new Appendix for NRC approval regardless of SDL values.
Duke analysis of a non-Duke reactor.	Evaluate, submit a new Appendix for NRC approval regardless of SDL values.
New Thermal-Hydraulic Code.	Evaluate, submit a new Appendix for NRC approval regardless of SDL values.

FIGURE 2

REVISED SCD FLOWCHART



**REGULATORY INFORMATION DISTRIBUTION SYSTEM
(RIDS)**

**Office of Nuclear Reactor Regulation (NRR)
Contact: Doris J. Hoover, DLO
504-1869, OWFN 12 H 11, Mail Stop 12 H 5**

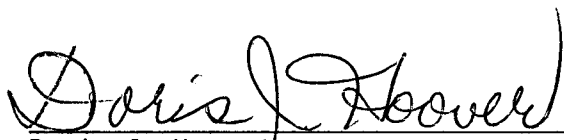
DC: 94-414
DATE: August 4, 1994
CODE NO.

ACTION REQUESTED

	NEW
	ADDITION
	DELETE
X	OTHER

TOPIC REPORT DPC-NE-2005 - THERMAL/HYDRAULIC STATISTICAL CORE DESIGN METHODOLOGY
C. Harwood contacted Duke Power - 8/3 TELCON with S. Gewehr, Duke Power. "None of these pages, specifically pages 28 and 30 are proprietary"

cc: CHarwood, KBohrer
MPSiemien


Doris J. Hoover
NRR Document Liaison Officer