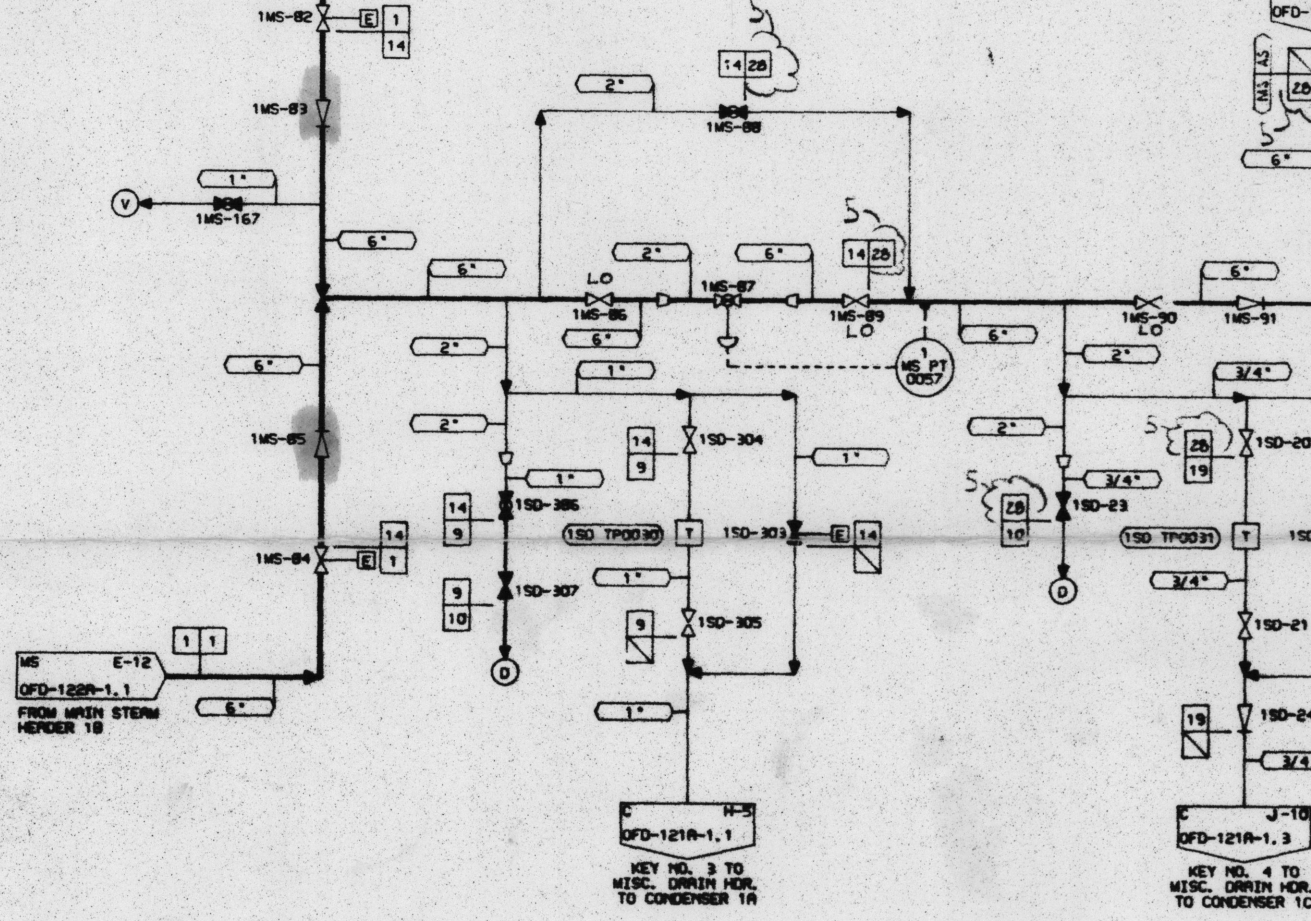


H
G
F
E
D
C
B
A



KEY NO. 3 TO MISC. DRAIN HOR. TO CONDENSER 1A

KEY NO. 4 TO MISC. DRAIN HOR. TO CONDENSER 1C

"FOR INSPECTION PURPOSES ONLY"

NOTES:

1. OPERATING MODE REPRESENTED BY BOLD LINES; HP STEAM SUPPLY TO EMERGENCY FDW PUMP TURBINE.
2. 1/2" THRU 8" SCH. = 80
10" THRU 24" SCH. = 60
25" MIN. WALL = 0.875"
36" MIN. WALL = 1.164"
3. 1/2" THRU 10" SCH. = 40
12" THRU 48" SCH. = STD.
4. ORIGINAL ISSUE OF THIS DRAWING WAS BASED ON PD-122A-1, REV. 51.
5. 3/4" SCH. = 40

DESIGN PARAMETERS

LINE NO.	DUKE CLASS	DESIGN PRESS.	DESIGN TEMP.	MATERIAL	PIPE SPEC. NO.	PIPE SCH. NO.	IS CL.
1	F	1050 PSIG	630°F	CS	600.5	NOTE 2	
9	G	1050 PSIG	630°F	CS	600.4	NOTE 2	
10	G	ATM	212°F	CS	300.4	NOTE 2	
14	F	1050 PSIG	630°F	CS	600.4	NOTE 2	
15	F	350 PSIG	550°F	CS	300.4	NOTE 3	
16	F	50 PSIG	500°F	CS	150.4	NOTE 3	
17	F	50 PSIG	450°F	CS	150.4	NOTE 3	
18	F	50 PSIG	450°F	CS	150.4	NOTE 3	
19	G	575 PSIG	550°F	CS	300.4	NOTE 3	
27	G	50 PSIG	500°F	CS	150.4	NOTE 3	
28	F	575 PSIG	550°F	CS	300.4	NOTE 3	