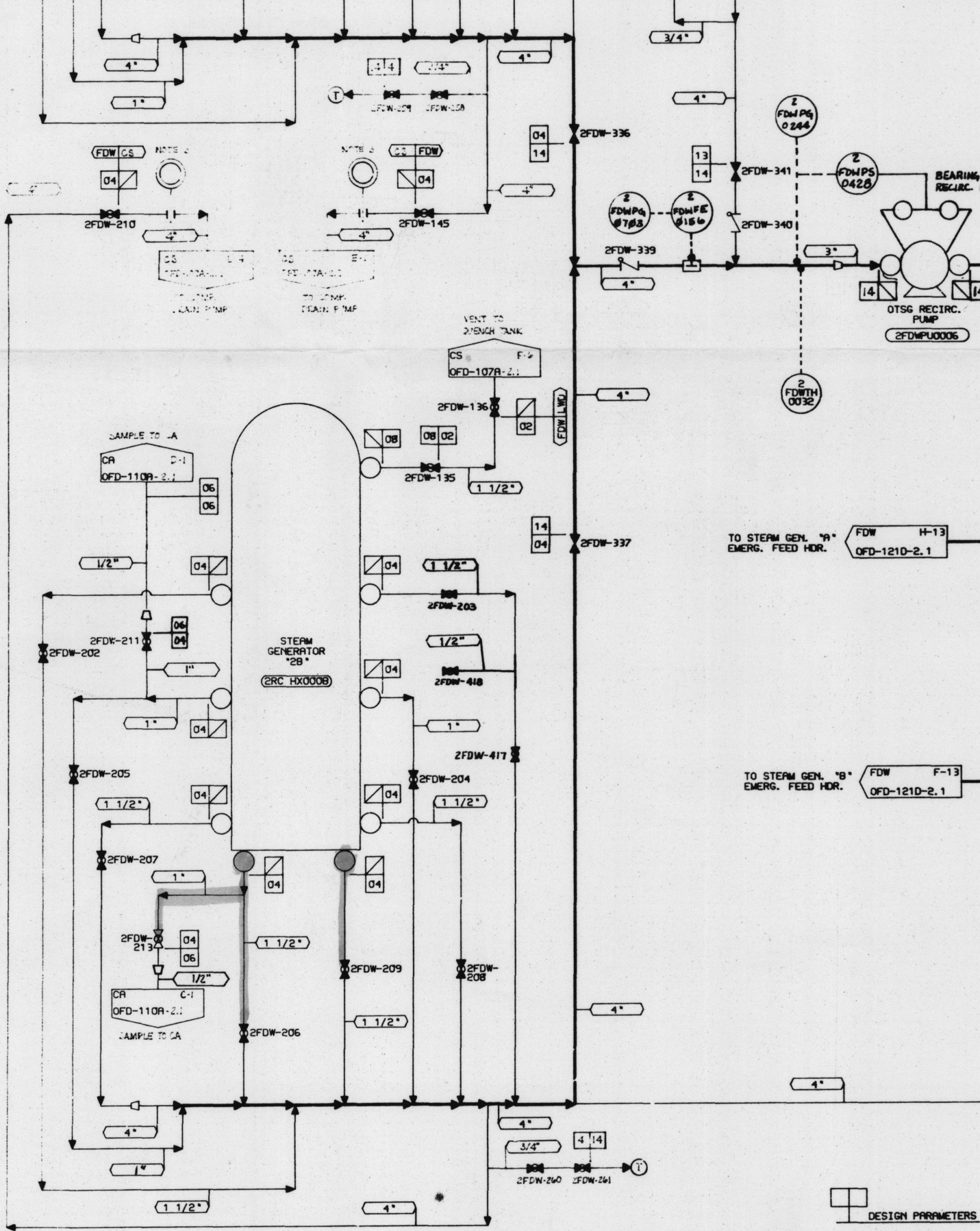


H
G
F
E
D
C
B
A



- NOTES:**
- OPERATING MODE REPRESENTED BY BOLD LINES: STEAM GENERATOR RECIRCULATION. (NOTE: ONLY ONE STEAM GENERATOR IS RECIRCULATED AT A TIME).
 - OPEN SIDE OF SPECTACLE FLANGE (3/32" THICK) TO BE INSTALLED ONLY WHEN STEAM GENERATOR PRESSURE IS BELOW 35 PSIG. BLANK SIDE OF SPECTACLE FLANGE (3/32" THICK) TO BE INSTALLED WHEN STEAM GENERATOR PRESSURE IS ABOVE 35 PSIG.
 - OPEN SIDE OF SPECTACLE FLANGE (3/32" THICK) TO BE INSTALLED ONLY WHEN DRAINING SECONDARY SIDE TO COMPONENT DRAIN PUMP. BLANK SIDE OF SPECTACLE FLANGE (3/32" THICK) IS TO BE INSTALLED ONLY WHEN THE REACTOR IS IN OPERATION.
 - TOP DETAIL OF PENETRATION SCHEDULE TRANSITION SEE Q-1439C.
 - 1/2" THRU 24" SCH. 80
 - 1/2" THRU 10" SCH. 40
 - 12" THRU 36" STD
 - 1/2" THRU 2" SCH. 80
 - TUBING: 1/4", 3/8" - .035" WALL
1/2" - .065" WALL
 - 1/2" THRU 6" SCH. 40
 - GUARD PIPE AND VALVE ENCLOSURE COMPONENTS TO PROVIDE SECURITY BOUNDARY.
 - THE ORIGINAL ISSUE OF THIS DWG. IS BASED ON PO-123-28, REV. 17; PO-115 H, REV. 14; AND PO-115 K, REV. 17.

DESIGN PARAMETERS

LINE NO.	DUKE CLASS	DESIGN PRESS	DESIGN TEMP	MATERIAL
02	G	1275 PSIG	475° F	C
04	F	1050 PSIG	600° F	C
05	F	1050 PSIG	600° F	S
06	F	1050 PSIG	600° F	S
08	F	1275 PSIG	475° F	C
12	F	1050 PSIG	600° F	C
13	G	150 PSIG	300° F	C
14	G	1050 PSIG	600° F	C
17	G	1050 PSIG	600° F	C
21	G	35 PSIG	100° F	C