

# ACCELERATED DISTRIBUTION DEMONSTRATION SYSTEM

## REGULATORY INFORMATION DISTRIBUTION SYSTEM (RIDS)

ACCESSION NBR: 9202110298      DOC. DATE: 92/02/06      NOTARIZED: NO      DOCKET #

FACIL: 50-269	Oconee Nuclear Station, Unit 1, Duke Power Co.	05000269
50-270	Oconee Nuclear Station, Unit 2, Duke Power Co.	05000270
50-287	Oconee Nuclear Station, Unit 3, Duke Power Co.	05000287
50-369	William B. McGuire Nuclear Station, Unit 1, Duke Powe	05000369
50-370	William B. McGuire Nuclear Station, Unit 2, Duke Powe	05000370
50-413	Catawba Nuclear Station, Unit 1, Duke Power Co.	05000413
50-414	Catawba Nuclear Station, Unit 2, Duke Power Co.	05000414

AUTH. NAME      AUTHOR AFFILIATION  
 TUCKER, H.B.      Duke Power Co.  
 RECIP. NAME      RECIPIENT AFFILIATION  
                          Document Control Branch (Document Control Desk)

SUBJECT: Forwards Rev 41 to "Duke Power Co Crisis Mgt Plan for Nuclear Stations."

DISTRIBUTION CODE: A045D      COPIES RECEIVED: LTR 1 ENCL 1      SIZE: 2 + 13  
 TITLE: OR Submittal: Emergency Preparedness Plans, Implement'g Procedures, C

NOTES: LPDR 2cys AMDTS to FSAR. ASLB 1cy.      05000413  
 LPDR 2cys AMDTS to FSAR. ASLB 1cy.      05000414

*Revised 2/24/92*

	RECIPIENT		COPIES			RECIPIENT		COPIES	
	ID CODE/NAME		LTTR	ENCL		ID CODE/NAME		LTTR	ENCL
	PD2-3 PD		1	1		WIENS, L	1	1	
	REED, T		1	1		MARTIN, R	1	1	
INTERNAL:	AEOD/DOA/IRB		1	1		NRR/DREP/PEPB9D	1	1	
	NUDOCS-ABSTRACT		1	1		<u>REG FILE 01</u>	1	1	
EXTERNAL:	NRC PDR		1	1		NSIC	1	1	
NOTES:			3	3					

NOTE TO ALL "RIDS" RECIPIENTS:

PLEASE HELP US TO REDUCE WASTE! CONTACT THE DOCUMENT CONTROL DESK, ROOM P1-37 (EXT: 20079) TO ELIMINATE YOUR NAME FROM DISTRIBUTION LISTS FOR DOCUMENTS YOU DON'T NEED!

TOTAL NUMBER OF COPIES REQUIRED: LTTR 13 ENCL 13

*Handwritten signature*

R  
I  
D  
S  
/  
A  
D  
D  
S

Duke Power Company  
P.O. Box 1007  
Charlotte, N.C. 28201-1007

HAL B. TUCKER  
Senior Vice President  
Nuclear  
(704)373-4531



**DUKE POWER**

February 6, 1992

U.S. Nuclear Regulatory Commission  
Document Control Desk  
Washington, D.C. 20555

Subject: McGuire Nuclear Station  
Docket Nos. 50-369 and 50-370  
Catawba Nuclear Station  
Docket Nos. 50-413 and 50-414  
Oconee Nuclear Station  
Docket Nos. 50-269, 50-270 and 50-287  
Crisis Management Plan

Gentlemen:

Attached for NRC use and review is Revision 41 of Duke Power Company's Crisis Management Plan. This revision is effective February 1, 1992.

By copy of this letter two revisions are being provided to NRC, Region II, Atlanta.

Very truly yours,

H. B. Tucker  
Senior Vice President  
Nuclear Generation Dept.

HAF:haf

Attachment

9202110298 920206  
PDR ADDCK 05000269  
F PDR

AD45

Please revise your copy of the Crisis Management Plan as follows:

Remove these pages

- ✓ Cover Sheet
- ✓ Figure E-3, E-4
- ✓ Figure H-5, H-10
- ✓ P-1, P-4, P-5
- ✓ Q-29, Q-45, Q-46, Q-47, Q-49

Insert these pages

- Cover Sheet
- Figure E-3, E-4
- Figure H-5, H-10
- P-1, P-4, P-5
- Q-29, Q-45, Q-46,
- Q-47, Q-49

DUKE POWER COMPANY  
CRISIS MANAGEMENT PLAN  
FOR  
NUCLEAR STATIONS

*REF M. J. Tackman*

Approved

*10/7/91*

Date Approved

Revision 40

October 15, 1991

Figure E-3

ALERTING THE CRISIS MANAGEMENT CENTER

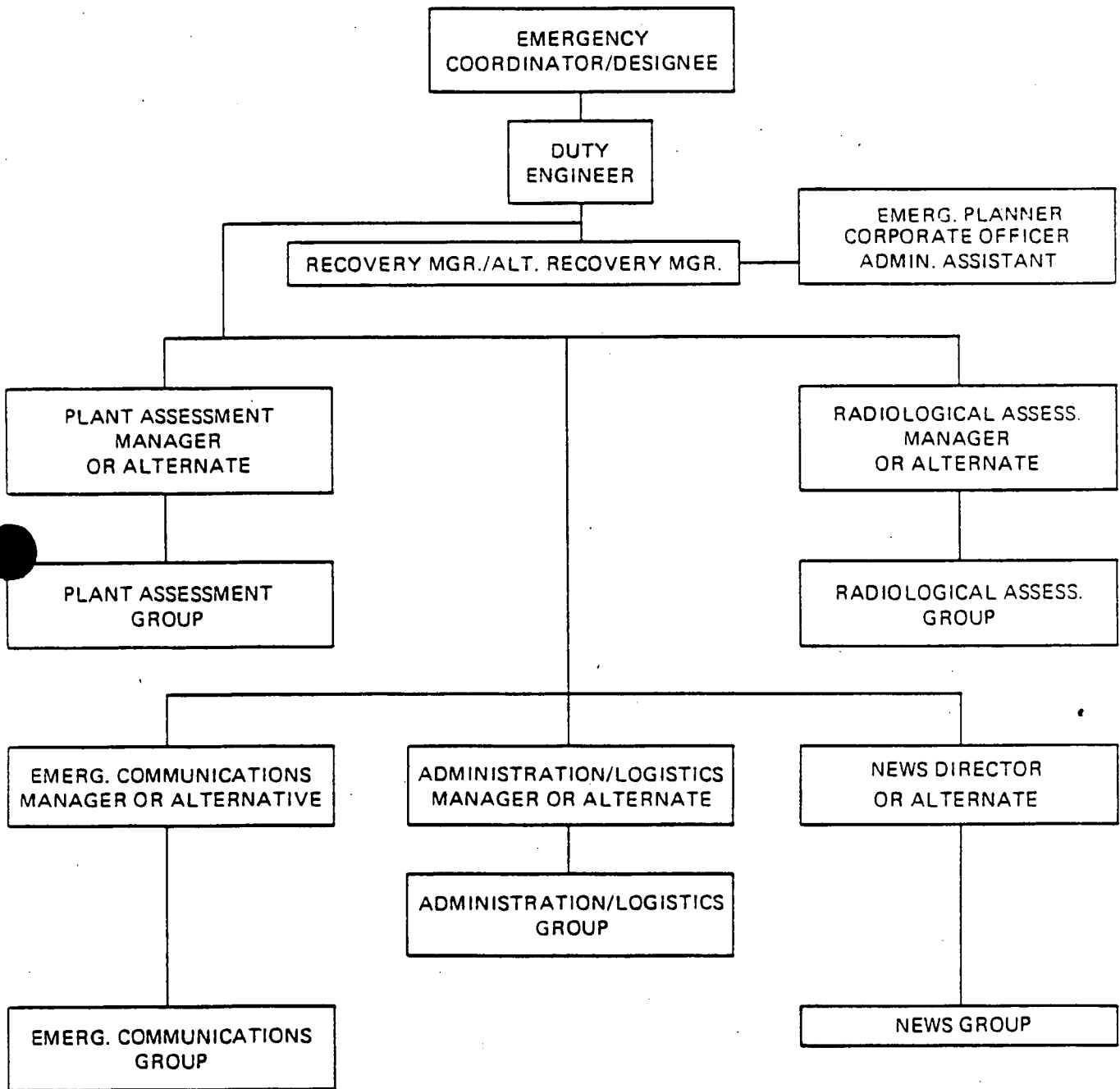


Figure E-4

CRISIS MANAGEMENT CENTER (CMC)  
EMERGENCY ACTIVATION MESSAGE

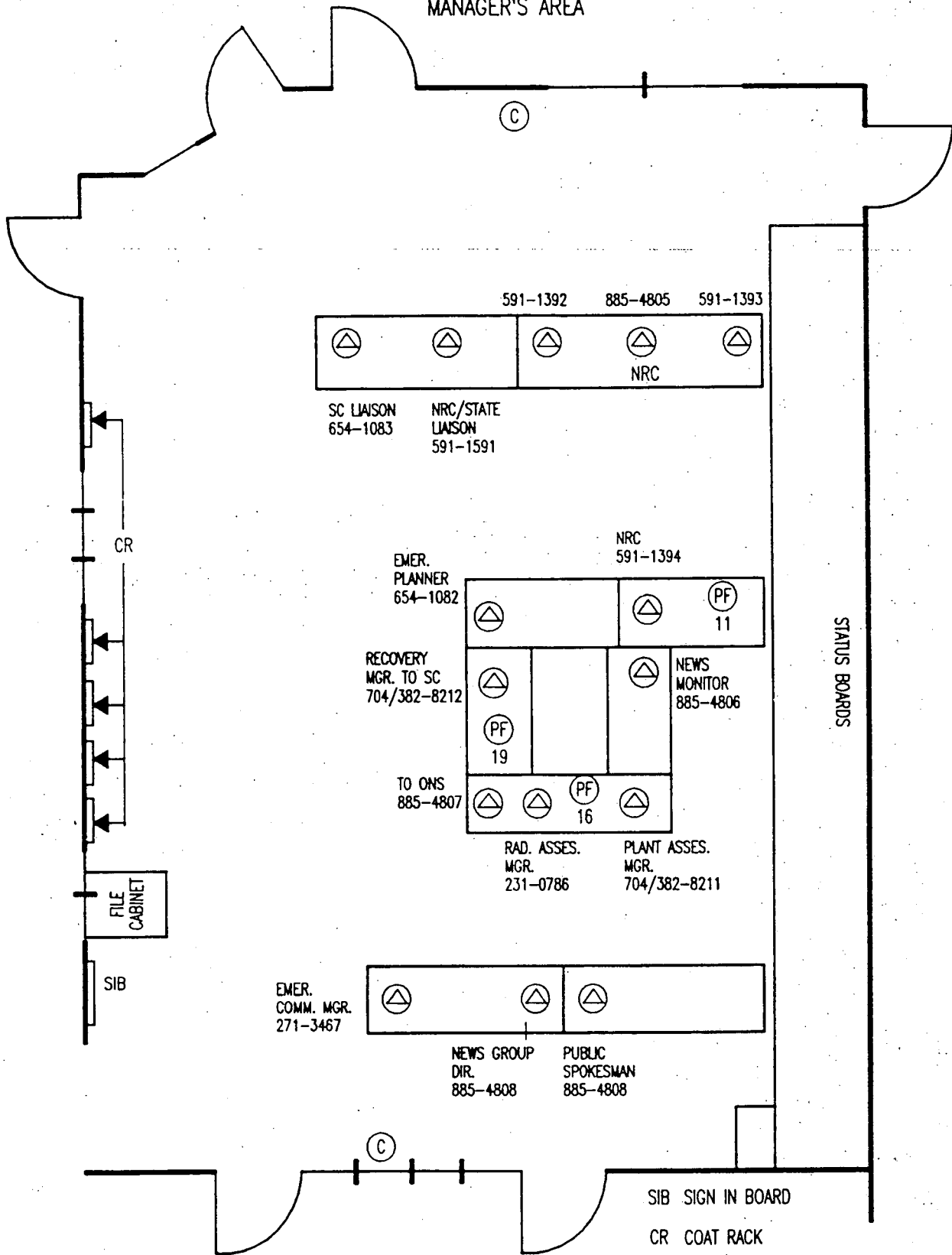
If the CMC is to be activated, the Duty Engineer uses this format to contact at least one person from each Crisis Management Center group. Each group in the CMC uses this format to alert its members according to the group's Crisis Management Implementing Procedure.

---

Message

1. I am notifying you of a drill/actual emergency at \_\_\_\_\_  
Nuclear Station.
2. Have you consumed alcohol within the past 5 hours? (If "no", skip to item 5. If "yes", ask the following questions, and use judgement to determine whether the person is fit for duty.)
  - (a) What did you consume?
  - (b) How much did you consume?
  - (c) Can you perform your duties unimpaired?
  - (d) Can you drive safely?
3. You should use the procedure for your CMC group to notify your portion to the Crisis Management Center Organization and report to:  
  
\_\_\_\_\_ the Catawba/McGuire CMC (Power Building)  
  
\_\_\_\_\_ the Oconee CMC

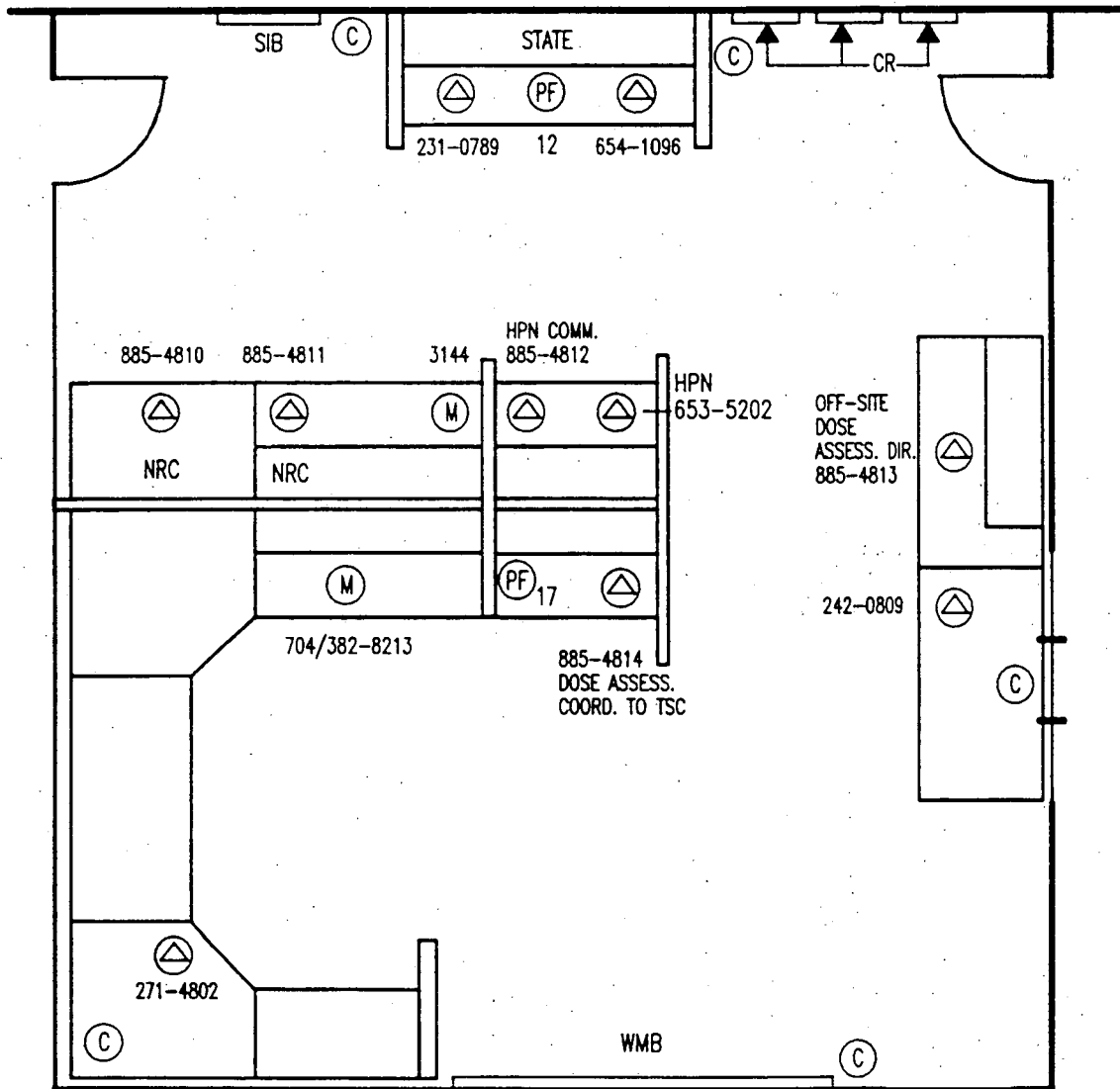
FIGURE H-5  
 OCONEE CMC  
 MANAGER'S AREA



NOTE: ALL PHONE NUMBERS ARE  
 FOR AREA CODE 803 UNLESS  
 OTHERWISE NOTED.

- SIB SIGN IN BOARD
- CR COAT RACK
- ☒ PHONE
- Ⓢ COMPUTER CONNECTION
- Ⓟ POWER FAIL TRUNK PHONE

FIGURE H-10  
 OCONEE CMC  
 OFF-SITE DOSE ASSESSMENT



SIB SIGN IN BOARD

HPN HEALTH PHYSICS NETWORK

WMB WHITE MARKER BOARD

CR COAT RACK

△ PHONE

⊙ COMPUTER CONNECTION

⊙ MODEM PHONE

⊙ POWER FAIL TRUNK PHONE

NOTE: ALL PHONE NUMBERS ARE  
 FOR AREA CODE 803 UNLESS  
 OTHERWISE NOTED.



P. RESPONSIBILITY FOR THE PLANNING EFFORT: DEVELOPMENT PERIODIC REVIEW AND DISTRIBUTION OF EMERGENCY PLANS

P.1 Emergency Planner Training

The Manager, Nuclear Emergency Planning is responsible for developing and maintaining the Crisis Management Plan, for coordinating the Crisis Management Plan, for coordinating the development and revision of the Crisis Management Implementing Procedures and for coordinating the Crisis Management Plan and Station Plans. Training for this individual will be via industry workshops, information exchange meetings with other licensees, conferences held by industry and government agencies and training/workshop sessions attended on an annual basis.

P.2 Overall Authority

The Vice President, Nuclear Operations has the overall authority and responsibility for radiological emergency response planning. This planning effort is delegated to the Manager, Nuclear Emergency Planning. The Manager, Nuclear Emergency Planning is also responsible for assuring that the appropriate exercises are conducted and documented.

P.3 Station Emergency Planner

See Station Emergency Plan Section P.

P.4 Emergency Plan Review

The Crisis Management Plan and its Implementing Procedures will be updated on at least an annual basis. This revision will include any changes necessary as identified by drills and exercises, organizational realignments, or procedural changes. Changes will be forwarded to holders of the Crisis Management Plan within 30 days of the revision date. The Manager, Nuclear Emergency Planning will certify, on an annual basis, that the plan and agreements are current and up-to-date.

On an annual basis, the Manager, Nuclear Emergency Planning will provide each State and local organization responsible for off-site activation and protective action decision making, a copy of the nuclear station procedures appropriate for their area on emergency classification and notification. He/she will request that they respond by letter within 30 days that they have reviewed the procedures and concur in the EALs used for event classification and for protective action recommendations. If they identify any problem areas, the Manager, Nuclear Emergency Planning will ensure resolution.

P.5 Distribution of Revised Plans

Distribution of the Revised Plan will be as noted in paragraph P.4. Revisions will be marked along the right margin to show where changes have been made.

P.6 Table of Support Plans

Table P-1 lists plans in support of the Duke Power Company Crisis Management

Table P-2

IMPLEMENTING PROCEDURE CROSS REFERENCE

Crisis Management Implementing Procedures:

- CMIP-1 Recovery Manager and Immediate Staff Procedure
- CMIP-2 News Group Procedure
- CMIP-3 (Reserved for future use.)
- CMIP-4 Administration and Logistics Group Procedure
- CMIP-5 Emergency Communications Group Procedure
- CMIP-6 Plant Assessment Group Procedure
- CMIP-7 Radiological Assessment Group Procedure
- CMIP-8 Oconee Crisis Phone Directory
- CMIP-9 McGuire/Catawba Crisis Phone Directory
- CMIP-10 Emergency Classification - Catawba
- CMIP-11 Emergency Classification - McGuire
- CMIP-12 (Reserved for future use.)
- CMIP-13 Notifications to States and Counties from the Crisis Management Center
- CMIP-14 Crisis Management Data Transmittal System for Offsite Agencies
- CMIP-15 Oconee CMC Initial Activation
- CMIP-16 Crisis Management Data Transmittal System Access from the Crisis Management Center
- CMIP-17 (Reserved for future use.)
- CMIP-18 Maintaining Emergency Preparedness
- CMIP-19 Communications Test for McGuire/Catawba CMC
- CMIP-20 Communications Test for Oconee CMC
- CMIP-21 Quarterly Inventory Equipment Check
- CMIP-22 Telephone Number Updates

Oconee Procedure RP/O/B/1000/01, Emergency Classification  
Oconee Procedure RP/O/B/1000/06, Determination of Protective Actions

Emergency Dose Assessment Manual:

- EDA-1 - Procedure for Estimating Food Chain Dose Under Post Accident Conditions (all stations)
- EDA-2 - Off-site Dose Projections for Catawba Nuclear Station
- EDA-3 - Off-site Dose Projections for McGuire Nuclear Station
- EDA-4 - Off-site Dose Projections for Oconee Nuclear Station
- EDA-5 - Class A Model for Catawba Nuclear Station
- EDA-6 - Class A Model for McGuire Nuclear Station
- EDA-7 - Class A Model for Oconee Nuclear Station
- EDA-8 - Environmental Monitoring for Emergency Conditions for Catawba Nuclear Station
- EDA-9 - Environmental Monitoring for Emergency Conditions for McGuire Nuclear Station
- EDA-10 - Environmental Monitoring for Emergency Conditions for Oconee Nuclear Station

Table P-2 (cont'd)

IMPLEMENTING PROCEDURE CROSS REFERENCE

Sections of the CMP implemented by these plans/procedures: (cont'd)

<u>Plan/Procedure</u>	<u>CMP Section Implemented</u>
CMIP-1	B, C, D, E, F, J, K, M
CMIP-2	B, E
CMIP-4	B, E
CMIP-5	B, E
CMIP-6	B, E
CMIP-7	B, E
CMIP-8	F
CMIP-9	F
CMIP-10	D
CMIP-11	D
CMIP-13	E
CMIP-15	B, C, D, E, F, J, K, M
CMIP-16	I
CMIP-18	P
CMIP-19	F, N
CMIP-20	F, N
CMIP-21	P
CMIP-22	P
Dose Assessment	I
RP/O/B/1000/01 (Ocone)	D
RP/O/B/1000/06 (Ocone)	K

Appendix 5

Agreement Letters

The following agreement letters support the Crisis Management Plan and are attached:

REACTS  
DOE - Savannah River  
Georgia  
INPO  
North Carolina  
South Carolina  
VEPCO

W. R. CARTWRIGHT  
Vice President-Nuclear

Innsbrook Technical Center  
5000 Dominion Boulevard  
Glen Allen, Virginia 23060  
804.273.2800

OCT 7 '88



VIRGINIA POWER

October 5, 1988

Mr. Hal B. Tucker  
Vice President  
Nuclear Production Department  
Duke Power Company  
P.O. Box 33189  
Charlotte, North Carolina 28242  
Attention: R. E. Harris

Dear Mr. Tucker:

In response to your letter of September 7, 1988, Virginia Power personnel evaluated the capability of our company to process Teledyne PB-3 TLDs in the event of an emergency at Duke Power. Based upon a determination of compatible hardware requirements and review of NVLAP Accreditation, the Virginia Power-Duke Power Agreement for Emergency Support is hereby renewed. Furthermore, it is our understanding that you agree to provide Virginia Power with similar assistance should it be required. Appropriate compensation will be provided in either case.

Very truly yours,

  
W. R. Cartwright

Appendix 6

Distribution List - Crisis Management Plan

Recovery Manager and Immediate Staff

1. H. B. Tucker
4. R. E. Harris
6. J. J. Honeycutt
10. Open
13. Open
16. M. S. Tuckman
30. L. V. Wilkie
63. J. W. Hampton
70. W. B. McRee
71. W. S. Lee
78. Mark-up copy (c/o R. E. Harris)
83. J. J. Honeycutt (ONS CMC Managers Area)
85. J. J. Honeycutt (Catawba/McGuire CMC Managers Area)
89. D. P. Simpson

Emergency Communications

5. W. M. Sample
7. P. R. Herran

Administration & Logistics

9. R. F. Smith
73. E. D. Morton
74. S. M. Kessler
75. G. L. Allen

News Group

11. R. Bowman
14. M. Dembeck
20. News Center (R. Bowman)
23. R. Bowman

Plant Assessment

15. K. S. Canady
76. Open
77. R. B. Priory

Appendix 6 (Continued)

Radiological Assessment

- 25. W. A. Haller
- 26. R. T. Simril
- 27. J. E. Cole
- 28. R. W. Eaker
- 29. W. P. Deal
- 64. Open
- 80. R. C. Futrell
- 84. C. D. Ingram
- 86-87. Open

Q.A.

- 79. Loretta Roberts

B&W

- 31. Jerry G. Brown

Westinghouse

- 32. Linda S. Kish

NRC

- 33. NRC Document Control Desk (transmitted via Helen Froebe)
- 34-35. NRC Regional Administrator (transmitted via Helen Froebe)
- 36. NRC Resident Inspector - Catawba (transmitted via Helen Froebe)
- 37. NRC Resident Inspector - McGuire (transmitted via Helen Froebe)
- 38. NRC Resident Inspector - Oconee (transmitted via Helen Froebe)

North Carolina

- 46. Dayne Brown
- 47. Elaine Wathen
- 48. Tim Miller
- 49. Jack Hughes

South Carolina

- 50. George Schneider
- 51. Heyward Shealy
- 52. Steve Overcash

Appendix 6 (Continued)

Catawba Nuclear Station

- 12. Document Control - TSC (P. N. McNamara)
- 65. Document Control - Mary Wallace
- 72. Document Control - C. L. Hartzell
- 88. Document Control - J. W. Hampton

McGuire Nuclear Station

- 8. Document Control - Jeff Foster
- 17. Document Control - W. F. Byrum
- 18. Document Control - Supt. of Operations
- 19. Document Control - Supt. of Station Services
- 22. Document Control - TSC (R. L. Hasty)
- 67. Document Control - T. L. McConnell
- 68. Document Control - R. L. Hasty
- 81. Document Control - Master File
- 82. Document Control - Master File

Mt. Holly Training Center

- 2. Director Mt. Holly Training Center

Production Support - Catawba

- 21. David L. Waters

Duke Engineering

- 69. J. R. Leonard